



1. CAD FILE USED FOR THIS PROPOSAL:

JPEG of CAD files.

FOR INDOOR APPLICATIONS, HEIGHTS HAVE BEEN REVIEWED FOR CONFORMITY TO DESIGN CONDITIONS AND APPROVED.

- ☐ APPROVED AS SHOWN
- ☐ REVISE & RESUBMIT WITH NEW CAD DRAWING
(include new DWG file when returning for edit)

2. COLORS AND LAYOUT DESIGN:

- ☐ APPROVED AS SHOWN
- ☐ APPROVED AS NOTED
- ☐ REVISE & RESUBMIT AS NOTED

PROPOSAL WAS REVIEWED FOR DESIGN CONFORMITY TO CONTRACT DOCUMENTS PROVIDED IN RFP. CONTRACTOR/ CLIENT REPRESENTATIVE IS RESPONSIBLE FOR REVIEW & COMPLIANCE WITH ALL CONTRACT DOCUMENTS INCLUDING, BUT NOT LIMITED TO; DIMENSIONS, CLEARANCES, QUANTITIES, CONSTRUCTION DETAILS AND COORDINATION WITH OTHER CONTRACTORS.

BY _____

DATE _____

Stamp

Notes

Project Name: Calypso Cove

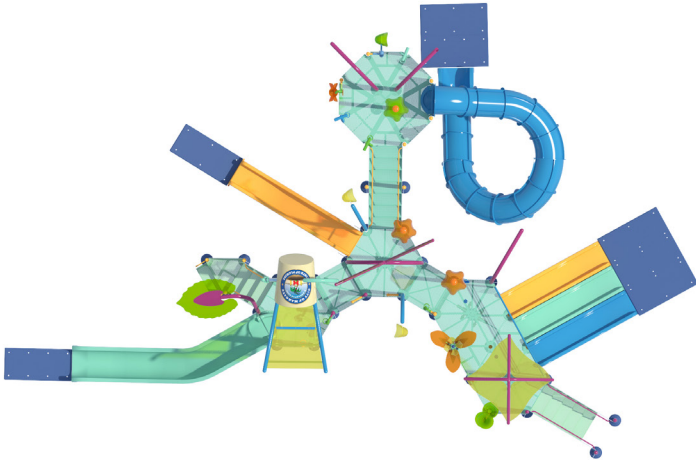
Location: FL, USA

Version: VC

Project ID: 36724



Project shown in color palette Custom.
Colors used shown on p. 16.





Water
moves
us



We understand how every drop, stream, and splash shapes the world around us. By harnessing the transformative power of water, Vortex creates play experiences for children to develop, communities to flourish, and businesses to thrive. We exist to leave an impact—one that lasts long after families are dried off.



8,000

Projects
worldwide

50

Countries
served

100+

Awards
& honors

Why choose Vortex?

Our diverse expertise

To foster a rich understanding of your unique needs, our design team draws its talent from many disciplines. Engineers, creative designers, childhood development specialists, and water choreography experts tackle new projects from all exciting angles. Our multidisciplinary approach oversees countless variables including water management, accessibility, and (most importantly) play.

Our superior quality

Every Vortex project is engineered on-site to ensure the highest quality and safety standards. We use stainless and galvanized steel sourced from North America and are vertically integrated for maximum quality control. Manufactured and tested in our Montreal headquarters, products are designed to last and require little maintenance.

Our boots on the ground

We put a lot of stock into local representation. Every collaboration begins by getting to know the families you're servicing and thinking creatively about how we can help them grow. We ensure that no matter where you're situated, our customer service and expert guidance come equipped with an intuitive understanding of what sets your facility apart.



All 3D renders shown are for illustration purposes only. Actual colors, textures and finishes may differ from renders.
Waterslide finish shown in Classic.



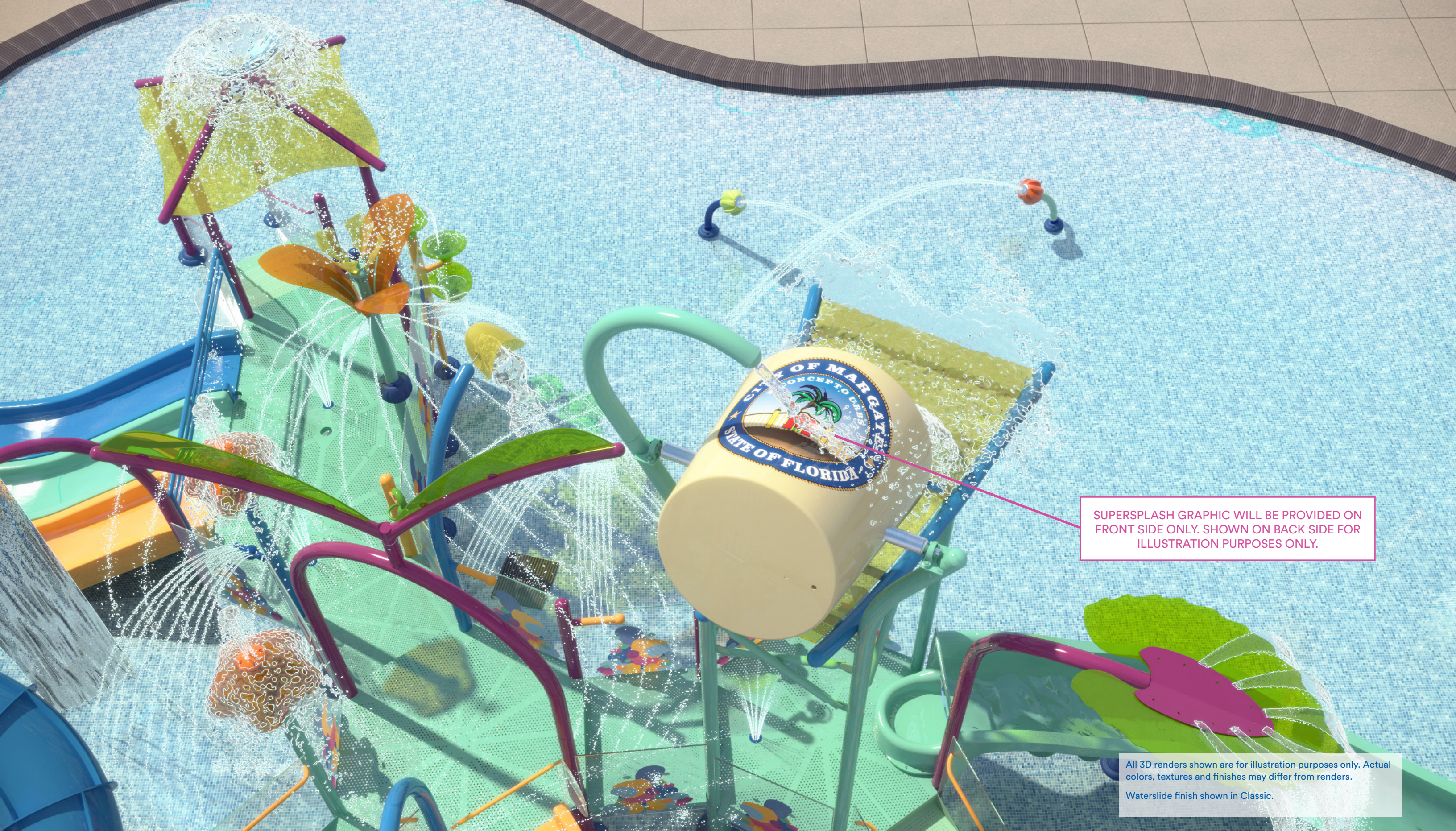
All 3D renders shown are for illustration purposes only. Actual colors, textures and finishes may differ from renders.
Waterslide finish shown in Classic.



All 3D renders shown are for illustration purposes only. Actual colors, textures and finishes may differ from renders.
Waterslide finish shown in Classic.











All 3D renders shown are for illustration purposes only. Actual colors, textures and finishes may differ from renders.
Waterslide finish shown in Classic.

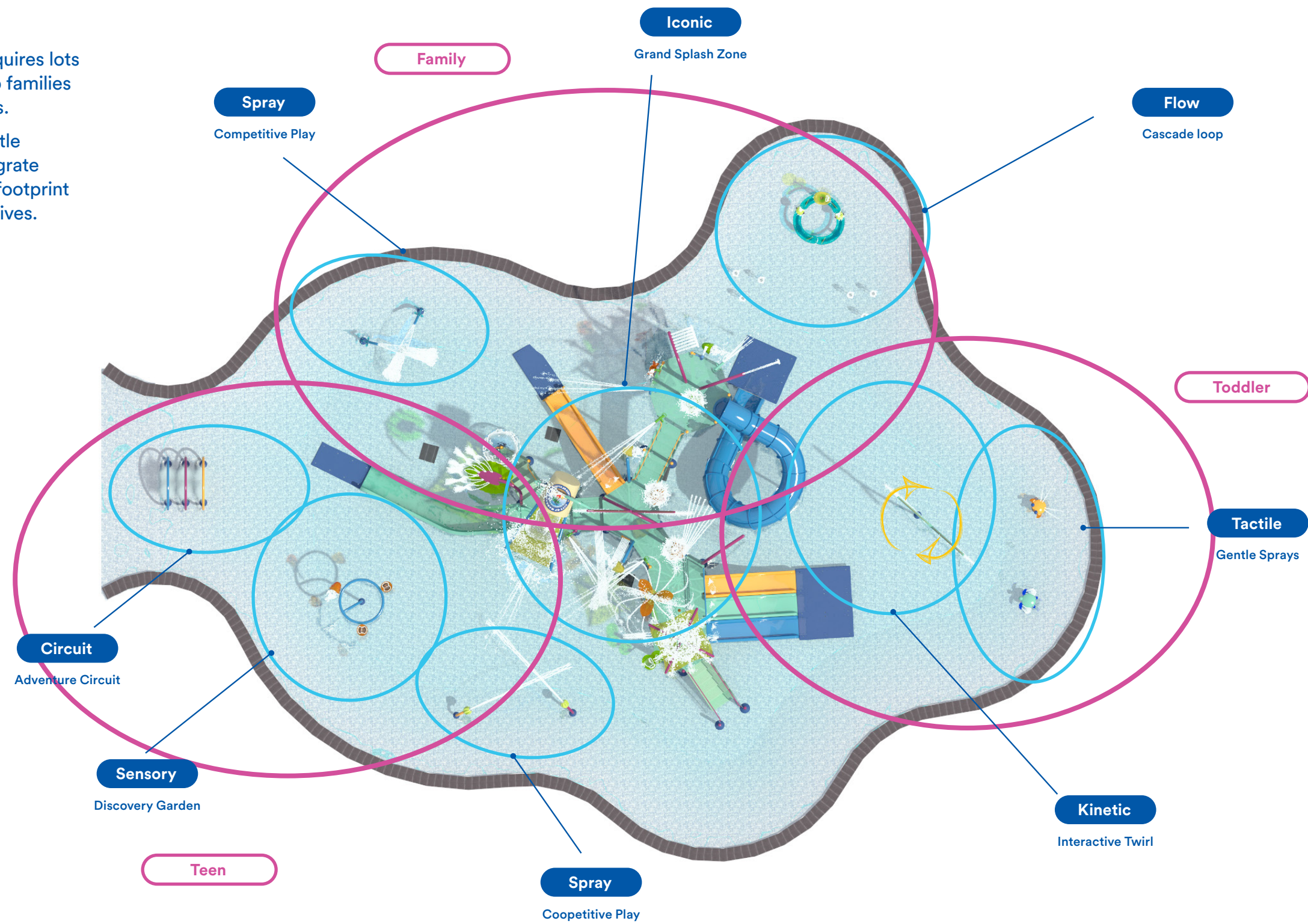


Play Value Planning

Aquatic play may feel spontaneous, but it actually requires lots of planning. We design every play experience to keep families engaged, boost dwell times, and increase return visits.

To build lasting memories among moms, dads, and little ones of all abilities, we carefully consider how to integrate products that cater to everything from the location's footprint and capacity to its demographics and theming objectives.

-  **Sensory**
Stimulates & develops multiple sense experiences
-  **Spray**
Encourages teamwork & competition
-  **Tactile**
Promotes discovery of water textures
-  **Iconic**
Features interactive fun & serves as a social gathering place
-  **Circuit**
Encourages physical development
-  **Flow**
Develops discovery & learning
-  **Kinetic**
Features interactive fun & encourages movement
-  **Misty**
Cloud-like experience gives refreshing thrills



#

ITEM

QTY

GPM

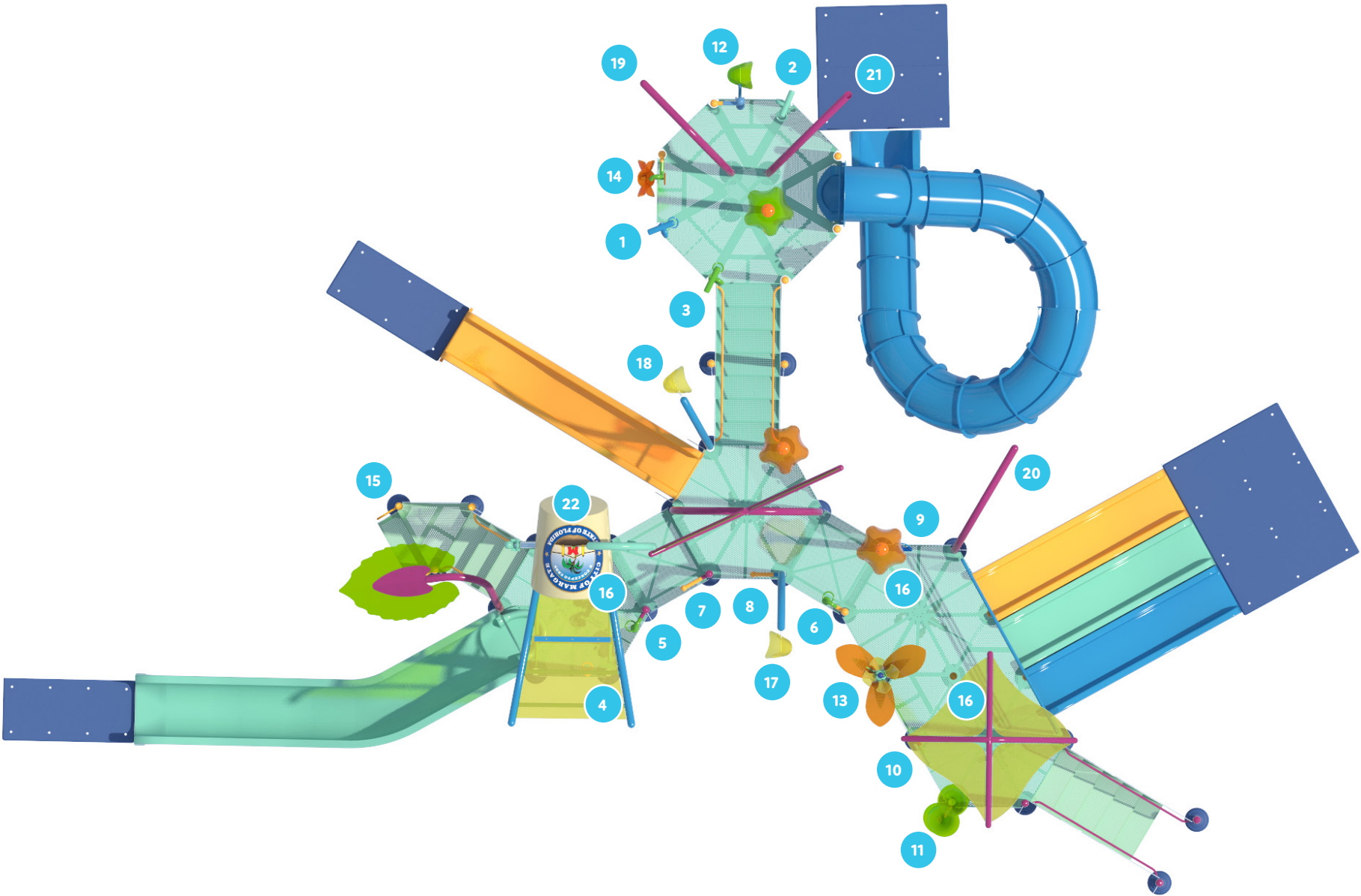
LPM

INTERACTIVE WATER PLAY FEATURES

| | | | | |
|----------------------------|------------------------------|----|-------|-----|
| 1 | Spray Cannon | 1 | 20 | 76 |
| 2 | Spray Cannon | 1 | 20 | 76 |
| 3 | Spray Cannon | 1 | 20 | 76 |
| 4 | Orb Spray No2 | 1 | 20 | 76 |
| 5 | Orb Spray No2 | 1 | 20 | 76 |
| 6 | Orb Spray No2 | 1 | 20 | 76 |
| 7 | Spray Bar No1 | 1 | 10 | 38 |
| 8 | Spray Bar No1 | 1 | 10 | 38 |
| 9 | Hose Sprayer Arch | 1 | 10 | 38 |
| 10 | Twinflow | 1 | 30 | 114 |
| 11 | Cascade Basins (# Basins) | 1 | 6 | 23 |
| 12 | Seeflow Dumping Bucket Panel | 1 | 20 | 76 |
| 13 | Blossom Twirl | 1 | 35 | 132 |
| 14 | Panel Spinner | 1 | 5.5 | 21 |
| TOTAL INTERACTIVE FEATURES | | 14 | 246.5 | 933 |

WATER PLAY FEATURES

| | | | | |
|----|------------------------|---|----|-----|
| 15 | Aquadome | 1 | 20 | 76 |
| 16 | Deck Geysers | 3 | 15 | 57 |
| 17 | Seeflow Dumping Bucket | 1 | 5 | 19 |
| 18 | Seeflow Dumping Bucket | 1 | 5 | 19 |
| 19 | Seven Falls | 1 | 40 | 151 |
| 20 | Water Sheet | 1 | 45 | 170 |
| 21 | Pipe Fall | 1 | 45 | 170 |
| 22 | Supersplash | 1 | 40 | 151 |



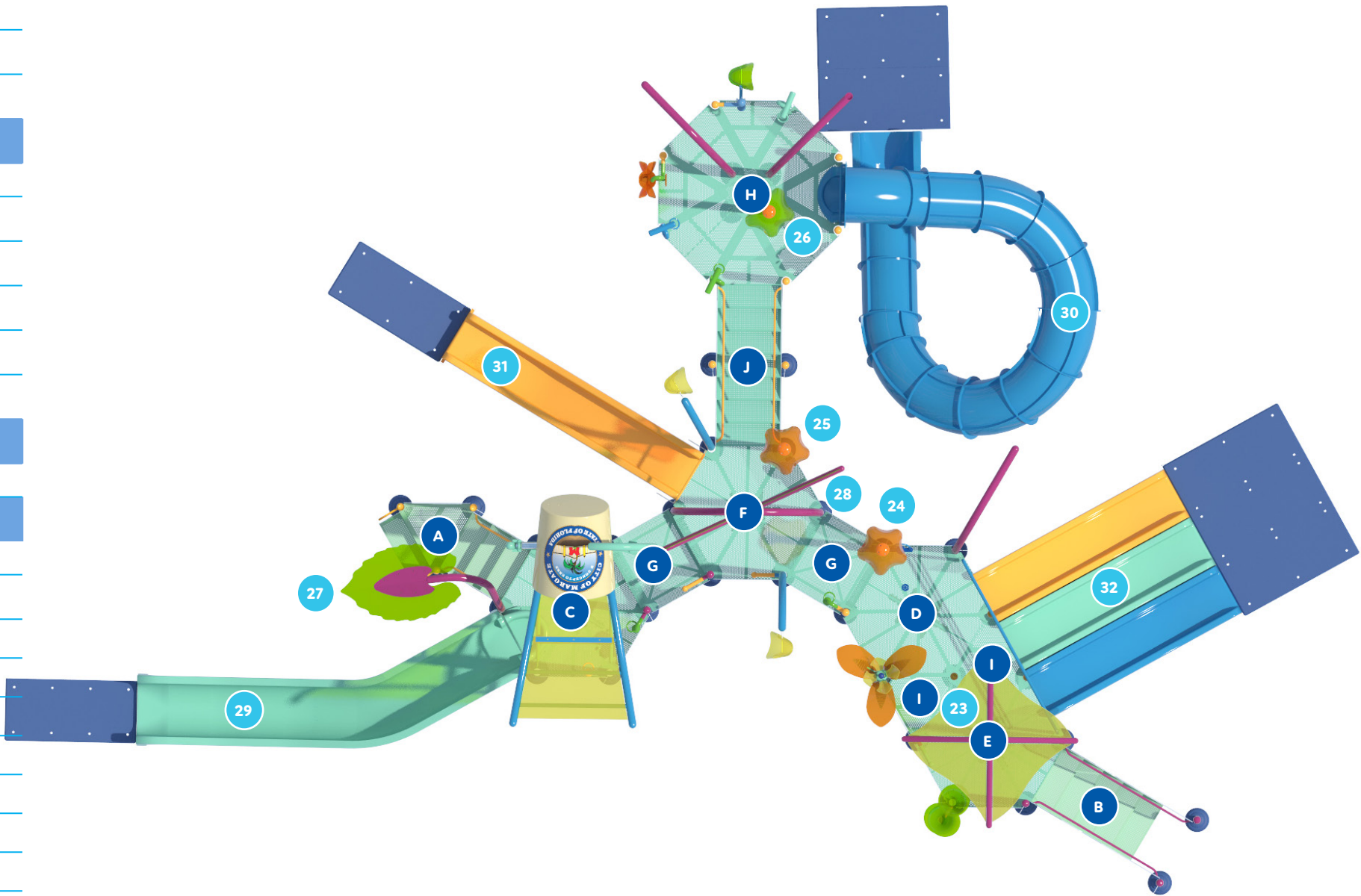
| # | ITEM | QTY | GPM | LPM |
|----------------|--------------------|-----|-----|------|
| 23 | Seeflow Shade Roof | 1 | 40 | 151 |
| 24 | Water Dome | 1 | 40 | 151 |
| 25 | Water Dome | 1 | 40 | 151 |
| 26 | Water Dome | 1 | 40 | 151 |
| 27 | Sprig No1 | 1 | 45 | 170 |
| 28 | Helico | 1 | 20 | 76 |
| TOTAL FEATURES | | 16 | 440 | 1665 |

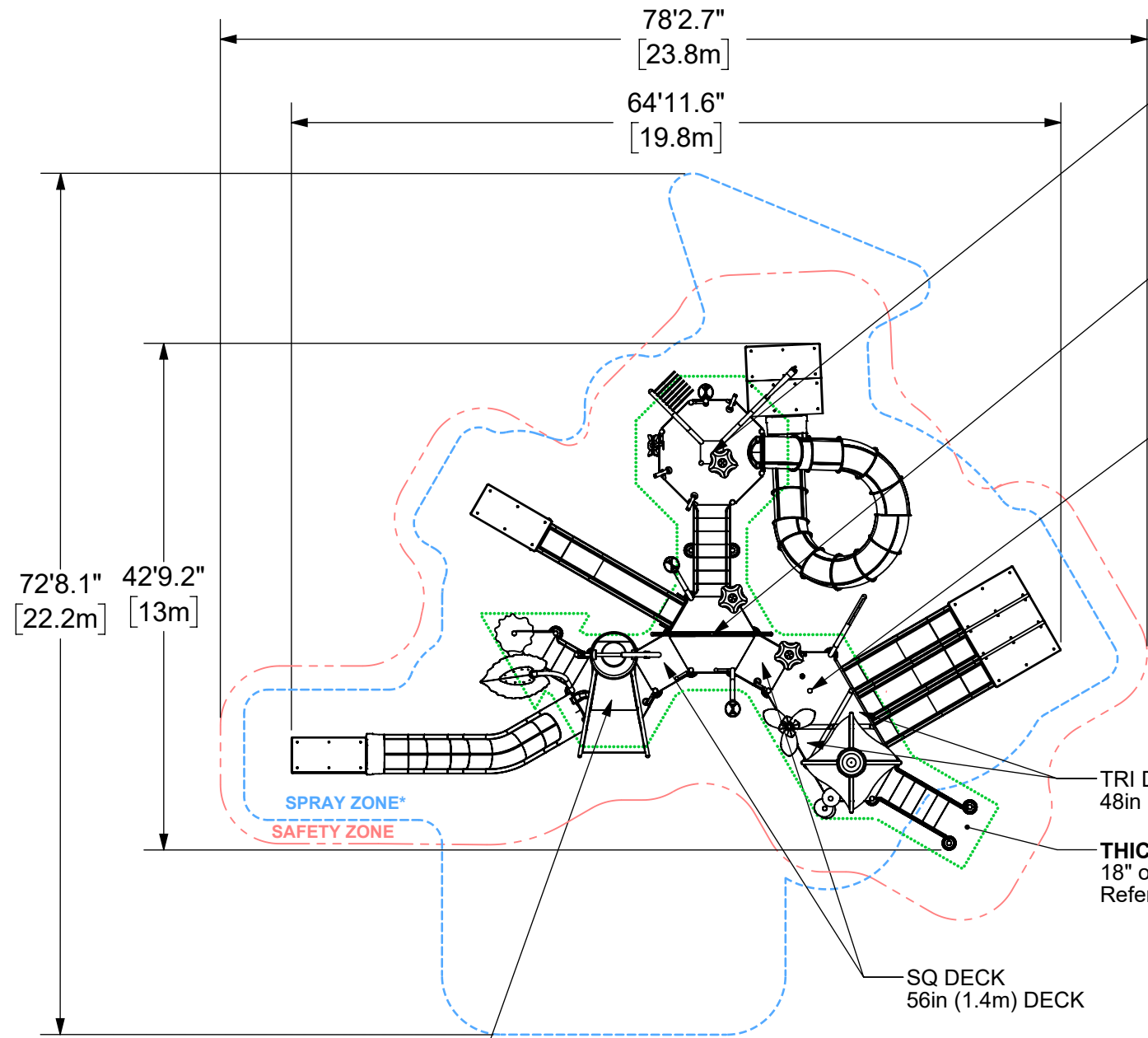
WATERSLIDES

| | | | | |
|--------------|---|---|-----|-----|
| 29 | 30" Open Flume Waterslide - Classic, Landing Mat | 1 | 40 | 151 |
| 30 | 31.6" Closed Flume Waterslide - Classic - Landing Mat | 1 | 100 | 379 |
| 31 | 22" Kiddie Slide, Landing Mat (64" height) | 1 | 10 | 38 |
| 32 | Triple Kiddie, Landing Mat (48" height) | 1 | 30 | 114 |
| TOTAL SLIDES | | 4 | 180 | 681 |

| | | | |
|-------------|----|----------|-----------|
| GLOBAL FLOW | 34 | 866.5GPM | 3279.7LPM |
|-------------|----|----------|-----------|

| STRUCTURES COMPONENTS | QTY | GPM | LPM |
|-----------------------|-----|-------|--------|
| A Standard Entry 48" | 1 | n/a | n/a |
| B Straight Entry 48" | 1 | n/a | n/a |
| C Hex 48" | 1 | 190 | 719.15 |
| D Hex 48" | 1 | 266 | 1006.8 |
| E Hex 48" | 1 | n/a | n/a |
| F Hex 64" | 1 | 100 | 378.5 |
| G Sq 56" | 2 | n/a | n/a |
| H Octa Deck 128" | 1 | 310.5 | 1175.2 |
| I Tri 48" | 2 | n/a | n/a |
| J 7 Steps | 1 | n/a | n/a |





MANIFOLD LOCATION
 128in (3.25m) OCTA DECK
 2x 4" WATER CONNECTION (55000.0550R01)
 (310.5 GPM@20 PSI at connection)
 (1175.2 LPM@1.4bar at connection)

MANIFOLD LOCATION
 64in (1.6m) DECK
 4" WATER CONNECTION (55000.0510R01)
 (100 GPM@20 PSI at connection)
 (378.5 LPM@1.4bar at connection)

MANIFOLD LOCATION
 48in (1.2m) DECK
 4" WATER CONNECTION (55000.0510R01)
 (266 GPM@20 PSI at connection)
 (1006.8 LPM@1.4bar at connection)

TRI DECK
 48in (1.2m) DECK

THICKENED REINFORCED CONCRETE SLAB
 18" offset from deck edge. Min. 12" thickness required.
 Refer to General Specs.

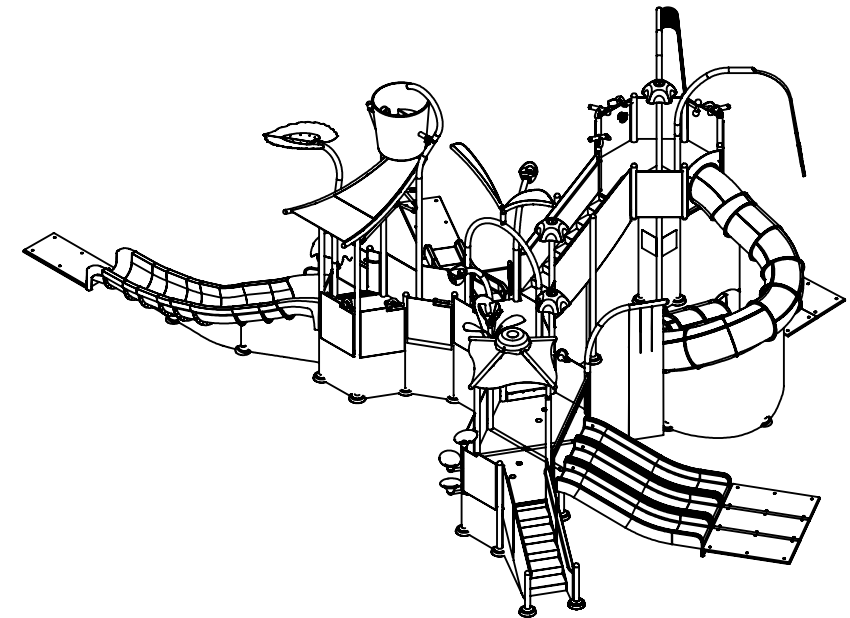
SQ DECK
 56in (1.4m) DECK

MANIFOLD LOCATION
 48in (1.2m) DECK
 4" WATER CONNECTION (55000.0510R01)
 (190 GPM@20 PSI at connection)
 (719.15 LPM@1.4bar at connection)

Minimum User Height for waterslides recommended by Vortex
 Closed Flume waterslide: 42" [1.07m]
 All other waterslides: 36" [0.91m]

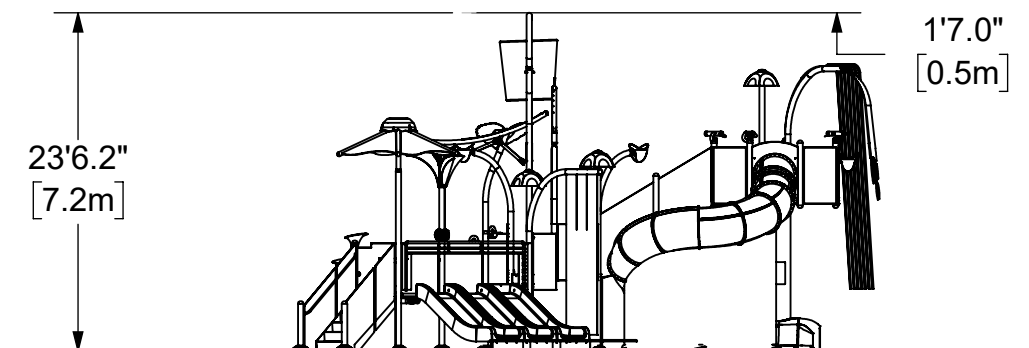
ELEVATIONS LEGEND

WATER ANCHOR(S) = 4
 DECKS = 10
 WATER PLAY FEATURES= 30
 WATERSLIDES = 6
 TOTAL FLOW = 866.5 gpm (3279.7 lpm)
 MAX USER CAPACITY = 276 users



*Spray free area (buffer zone) should be considered around product sprayzone.

Minimum clearance required from ceiling/canopy = 1'-7" (0.5m)



PRELIMINARY - NOT FOR CONSTRUCTION

THE DIMENSIONS CONTAINED HERE IN ARE A RESULT OF INITIAL SITE INFORMATION THAT WAS PROVIDED DURING THE PRELIMINARY DESIGN PROCESS. WHILE EVERY ATTEMPT HAS BEEN MADE TO ASSURE ACCURACY, FINAL CONSTRUCTION DRAWING DIMENSIONS MAY VARY.

SPLASHPAD DIMENSION

TOTAL AREA : 5746 ft² 534m²

SPRAY AREA : 5746 ft² 534m²

GRID SIZE : 10 x 10ft 3 x 3m

PRODUCT LEGEND

| REF | PRODUCT | QTY | GPM | LPM |
|-------|-----------------------------|-----|-------|--------|
| A | Spray Loop VOR 0519 | 3 | 22.5 | 85.1 |
| B | Pool Bubbler VOR 1107 | 6 | 180.0 | 680.4 |
| C | Crab N°1 VOR 7208 | 1 | 4.0 | 15.1 |
| D | Turtle N°2 VOR 7216 | 1 | 12.5 | 47.3 |
| E | Luna Cannon N°1 VOR 7235 | 2 | 13.0 | 49.1 |
| F | Cascade Loop VOR 7250 | 1 | 5.0 | 18.9 |
| G | Dolphin VOR 7255 | 2 | 18.0 | 68.0 |
| H | Astra N°2 VOR 7698 | 1 | 7.5 | 28.4 |
| I | Helico VOR 7790 | 1 | 17.0 | 64.3 |
| J | Custom L8 Elevation | 1 | 866.5 | 3279.7 |
| TOTAL | | 19 | 1146 | 4336.3 |

NOTES

- 1. Client is required to verify water system capacity.
 - 2. Existing water feeds need to be relocated below Elevations and play features
 - 3. Pool dimensions are preliminary and require a more accurate CAD file and/or on-site survey
- Design Concept is subject to change based on the above information.

* Recommended Safety Zone for circulation around the structure. Aquatic play structure in pool can have smaller clearance with pool wall according to your local pool code. Verify with your local authority having jurisdiction.

IMPORTANT

Client to provide Vortex with CAD and/or "As Built" drawings to establish the pool floor slope. If this is impossible, client will need to provide site dimensions that identify various depths at the Elevations structure location.

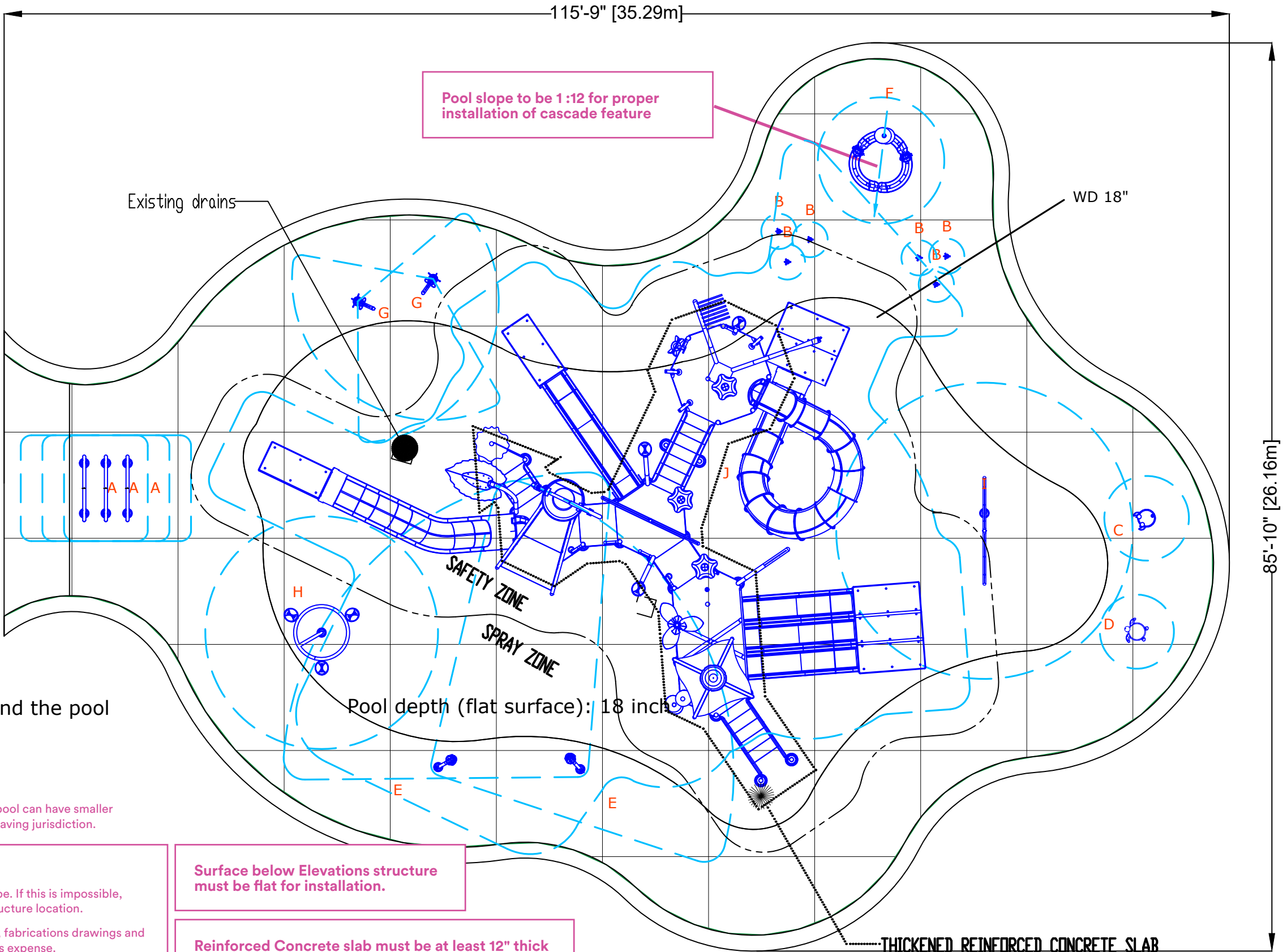
Failure to provide this information will cause delays in completing the submittal documents, fabrications drawings and may delay product delivery. Inaccurate information may cause additional site work at client's expense.

This proposal was made using CAD file: JPEG of CAD files.

Surface below Elevations structure must be flat for installation.

Reinforced Concrete slab must be at least 12" thick and have an offset of 18" from deck edge.

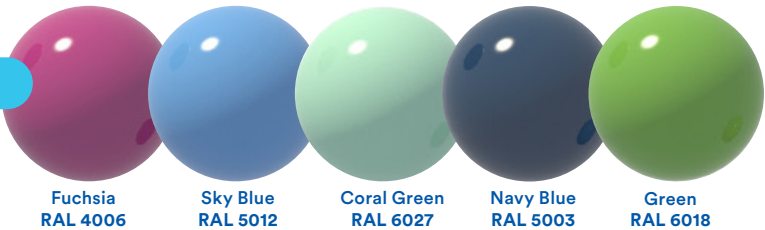
THICKENED REINFORCED CONCRETE SLAB
18" offset from deck edge. Min. 12" thickness require
Refer to General Specs.



Choose one of the following Color Palettes by marking the corresponding circle: 



Marine 1



Marine 2



Marine 3



Marine 4



Marine 5



Marine 6



COLOR PALETTE APPROVAL

- ☐ APPROVED AS SHOWN IN RENDERS
- ☐ APPROVED AS NOTED

BY _____ DATE _____

Nature 1



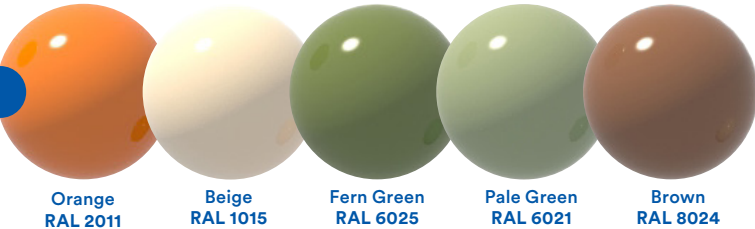
Nature 2



Nature 3



Nature 4



Nature 5



Nature 6



Color Palettes



Urban 1

Red RAL 3000 White RAL 9003 Navy Blue RAL 5003 Sparkle RAL 90080

Urban 2

Fuchsia RAL 4006 Navy Blue RAL 5003 Sky Blue RAL 5012 Sparkle RAL 90080

Urban 3

Orange RAL 2011 Mint Green RAL 6019 Beige RAL 1015 Sparkle RAL 90080

Urban 4

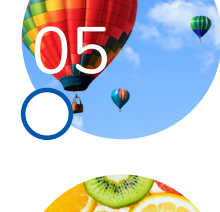
White RAL 9003 Navy Blue RAL 5003 Mint Green RAL 6019 Saffron RAL 1017

Urban 5

Pastel Blue RAL 5024 Sky Blue RAL 5012 Orange RAL 2011 Sparkle RAL 90080

Urban 6

Coral Green RAL 6027 Blue RAL 5017 White RAL 9003 Grey RAL 7040



Vibrant 1

Orange RAL 2011 Saffron RAL 1017 Yellow RAL 1023 Sky Blue RAL 5012

Vibrant 2

Fuchsia RAL 4006 Sky Blue RAL 5012 Orange RAL 2011 Yellow RAL 1023 Green RAL 6018

Vibrant 3

Red RAL 3000 Yellow RAL 1023 Blue RAL 5017 White RAL 9003

Vibrant 4

Pastel Blue RAL 5024 Green RAL 6018 Orange RAL 2011 Yellow RAL 1023 Sparkle RAL 90080

Vibrant 5

Yellow RAL 1023 Green RAL 6018 Coral Green RAL 6027 Red RAL 3000

Vibrant 6

Pale Green RAL 6021 Mint Green RAL 6019 Saffron RAL 1017 Orange RAL 2011 Red RAL 3000

☒ Custom Palette

Indicate RAL colors here: Vibrant 2 + RAL 6027 (Coral Green) + RAL 1017 (Saffron)

☐ Vortex Designer's Choice

RAL colors used:

Unless otherwise specified, Vortex designers will decide on the application of colors from the chosen color palette to create a harmonious look. Fees will apply for custom colors.

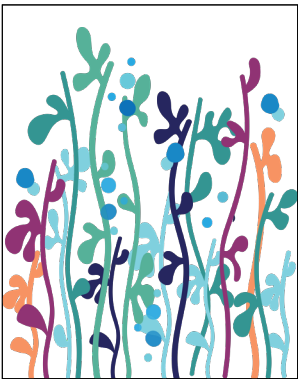
Choose from the following Barrier Graphics by marking the circle corresponding with the graphic: ☒

Custom barrier graphics available for a fee.

Marine A ☐



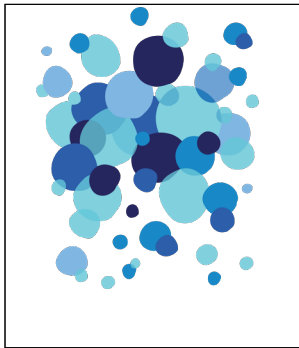
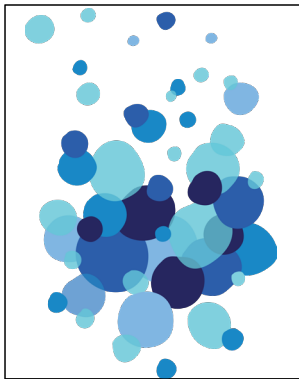
Marine B ☐



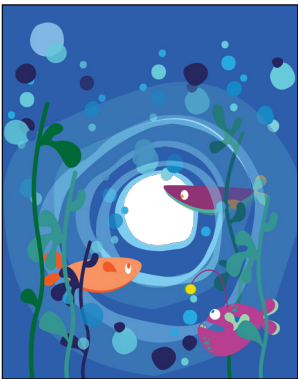
Marine C ☐



Marine D ☐



Marine E ☐



Marine F ☐



Urban A ☐



Marine

Top Barriers

Bottom Barriers*

* Available on
Splashpad® only.

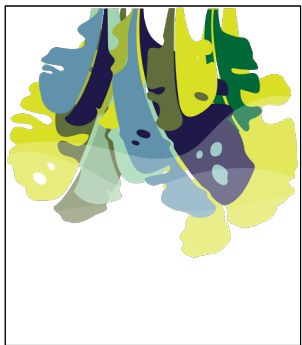
Urban

Top Barriers

Bottom Barriers*

* Available on
Splashpad® only.

Nature A ☐



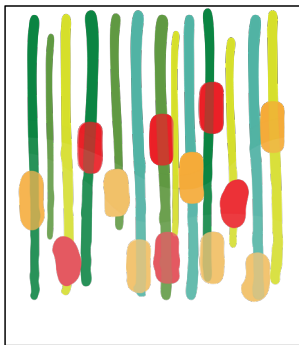
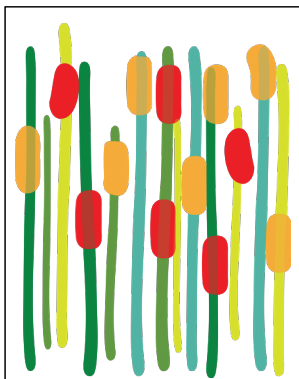
Nature B ☐



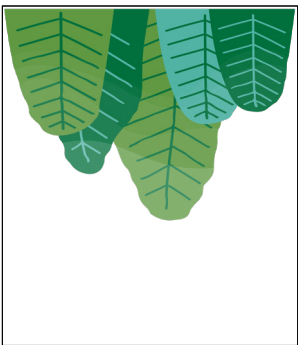
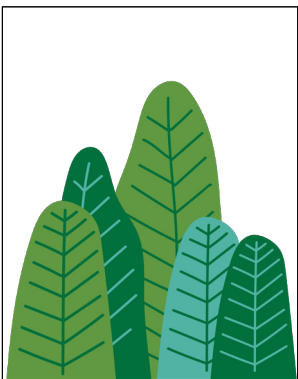
Nature D ☐



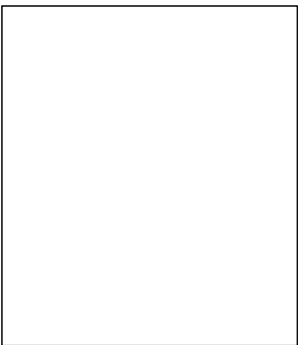
Nature E ☐



Nature F ☐



Vibrant A ☒



Vibrant B ☐



Nature

Top Barriers

Bottom Barriers*

* Available on
Splashpad® only.

Vibrant

Top Barriers

Bottom Barriers*

* Available on
Splashpad® only.

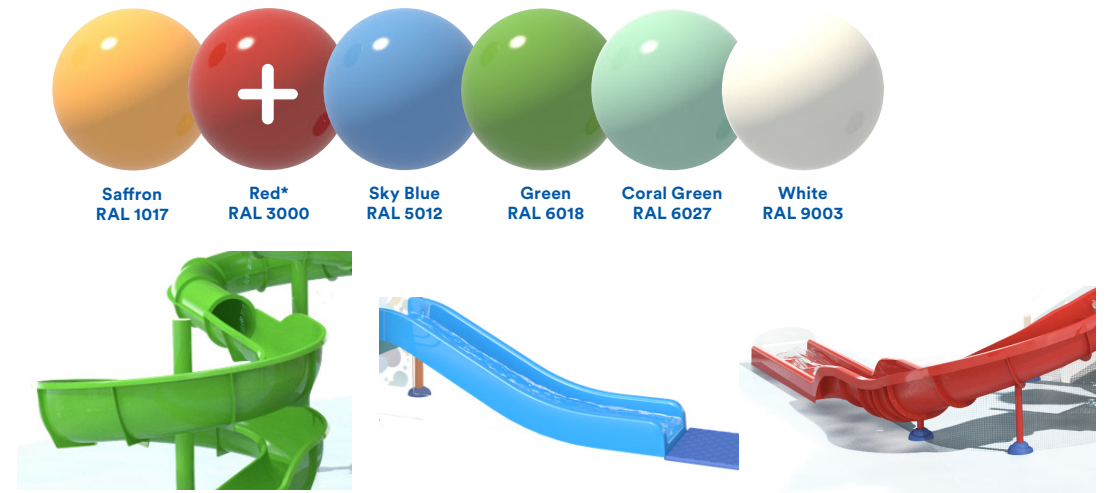
Vortex Colors

Steel and Fiberglass (excluding waterslides). Certain restrictions apply.



Fiberglass Waterslide Flume

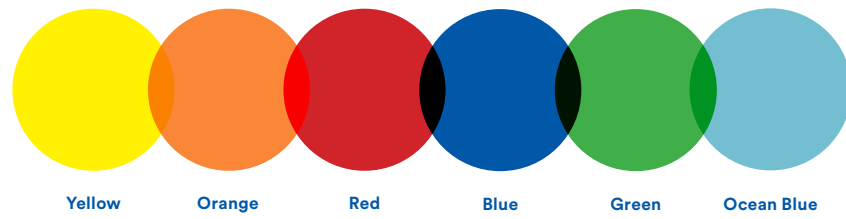
Applicable to all Waterslide Types (PrecisionRide™, Classic, Family Racer, Kiddie Slide)



* An additional fee will apply.

SeeFlow™

Certain restrictions apply

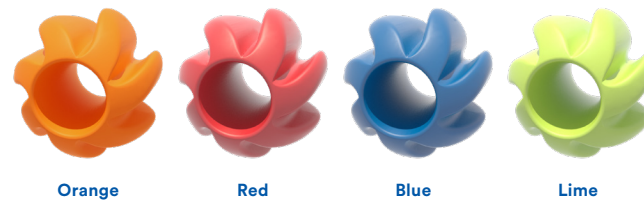


Accessories

Available in Vortex Blue (as shown)

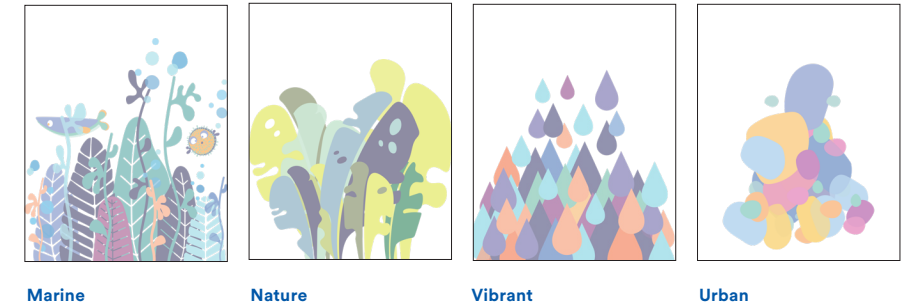


Orbs

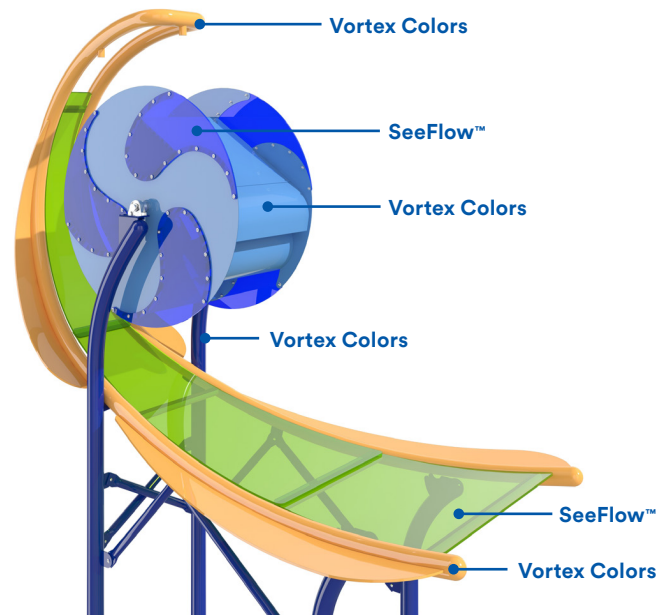


Barrier Graphics

See barrier graphics page to view full range of graphic options available.



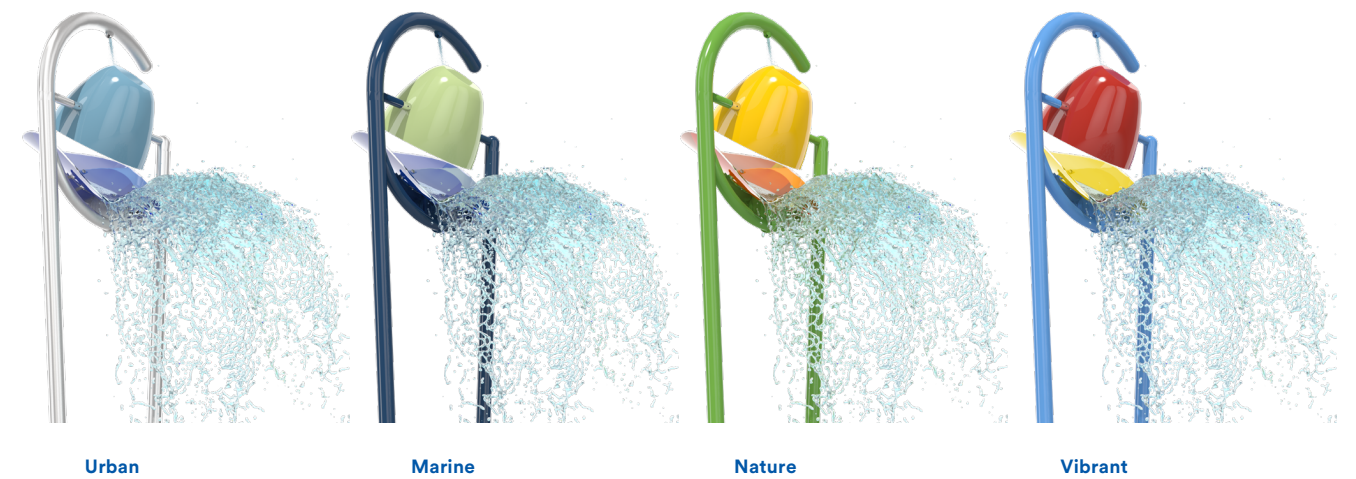
Superwave



Supersplash

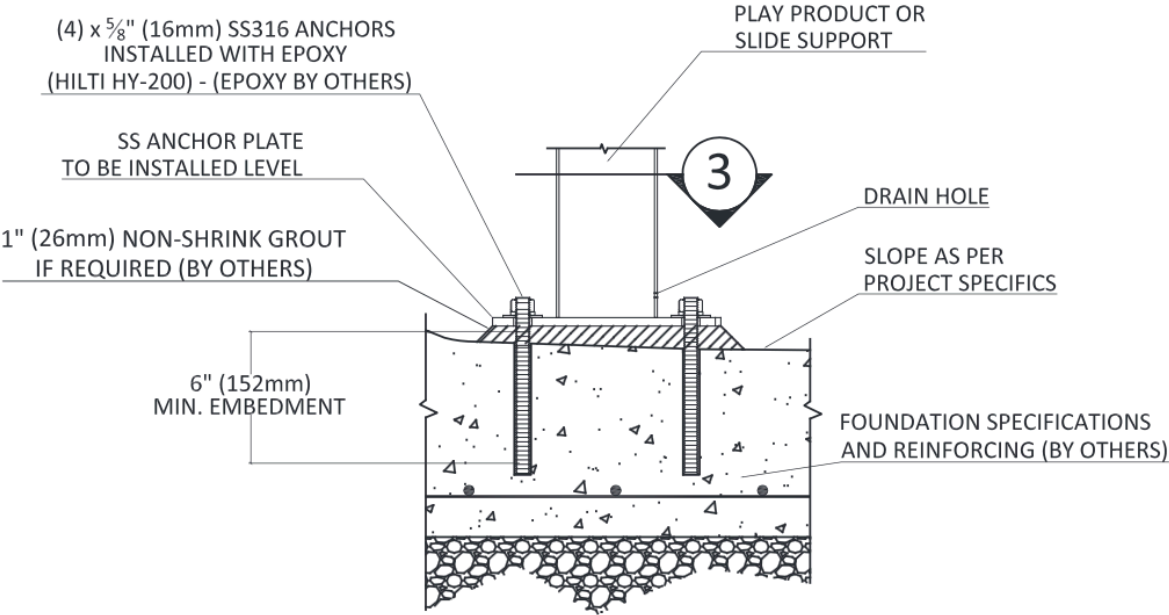


Twinsplash

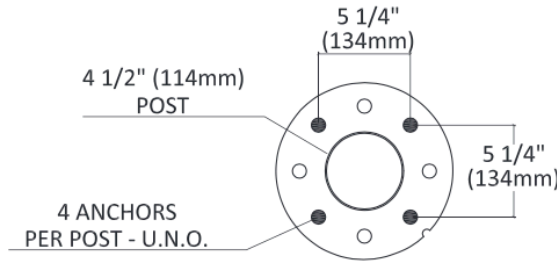


GENERAL SPECIFICATIONS:

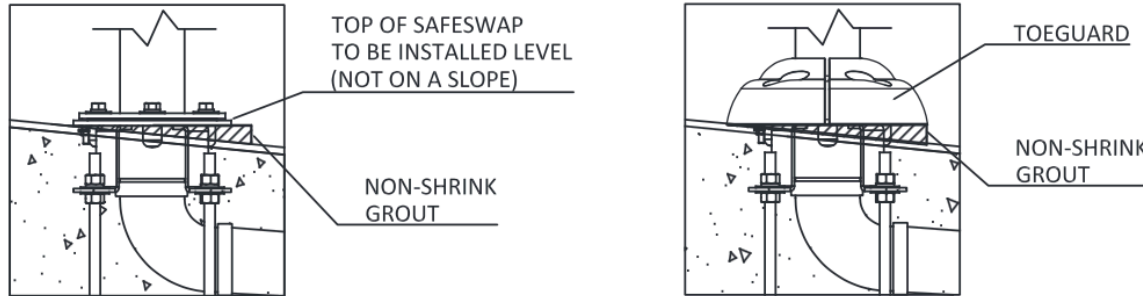
1. THESE DETAILS ARE GENERIC AND PROVIDE AN OVERVIEW OF THE SCOPE OF WORK DURING CONSTRUCTION/ INSTALLATION. REFER TO THE PROJECT FINAL INSTALLATION DRAWINGS FOR INFORMATION SPECIFIC TO YOUR PROJECT.
2. DESIGN OF CONCRETE SLAB, BY OTHERS. WE RECOMMEND AS A MINIMUM:
 - 10"-12" (250-300mm) MIN. THICKENED REINFORCED CONCRETE SLAB (U.N.O.) MIN. THICKNESS IS DEPENDANT ON MIN. ANCHOR EMBEDMENT REQUIRED.
 - UNDER ELEVATION DECKS (OFFSET OF 12" (300mm) FROM DECK EDGE
 - REINFORCED WITH #5 (15M) REBAR @ 12" (300mm) C/C BOTH WAYS
 - MIN. CONCRETE STRENGTH $f'c = 3600\text{psi}$ (25Mpa) @ 28 DAYS
 - AIR-ENTRAINED CONCRETE (IN REGIONS SUBJECTED TO FREEZE & THAW)
 - VERIFY LOCAL CODES AND STANDARDS FOR OTHER LOCAL REQUIREMENTS
3. FOR FURTHER DETAILS AND INFORMATION, REFER TO THE INSTALLATION, OPERATION, AND MAINTENANCE MANUALS.



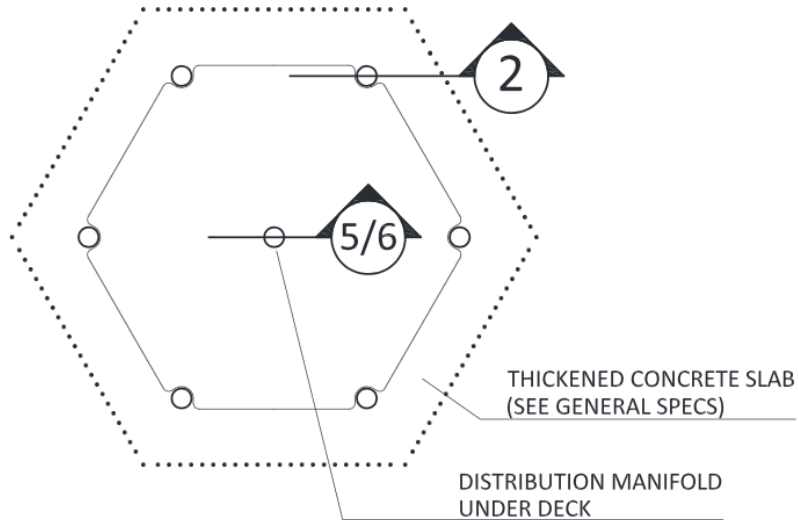
2 POST-ANCHORED DETAIL
TYP. POSTS



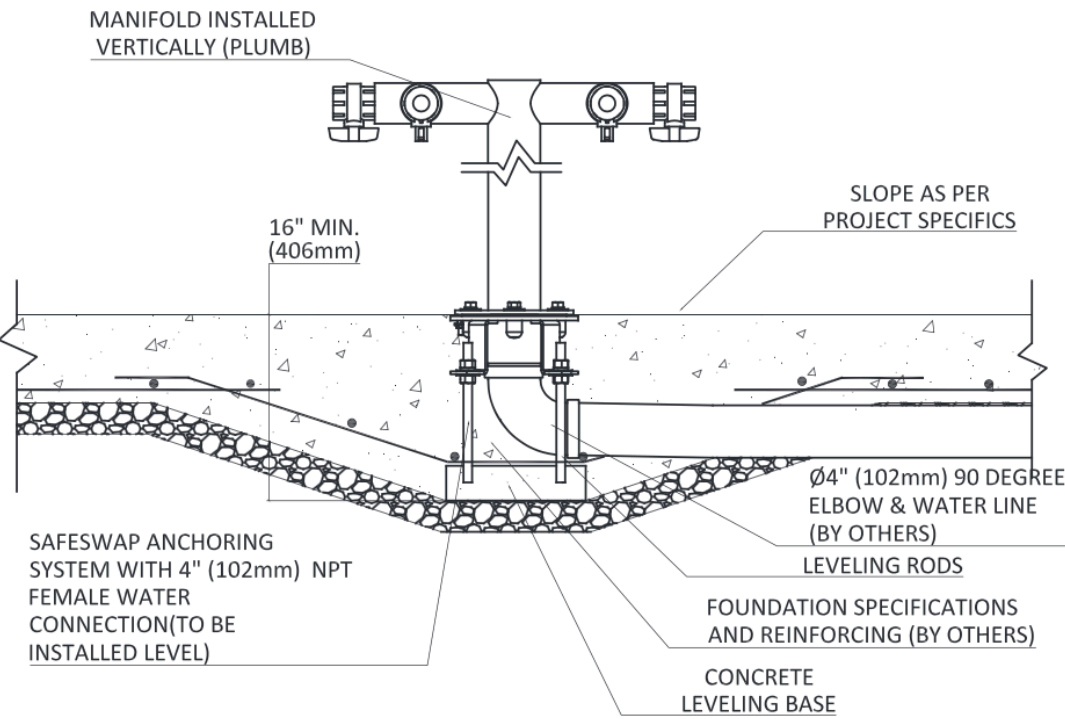
3 TYP. BASE PLATE FOR 4" (100mm) dia.
POST-ANCHORED POSTS



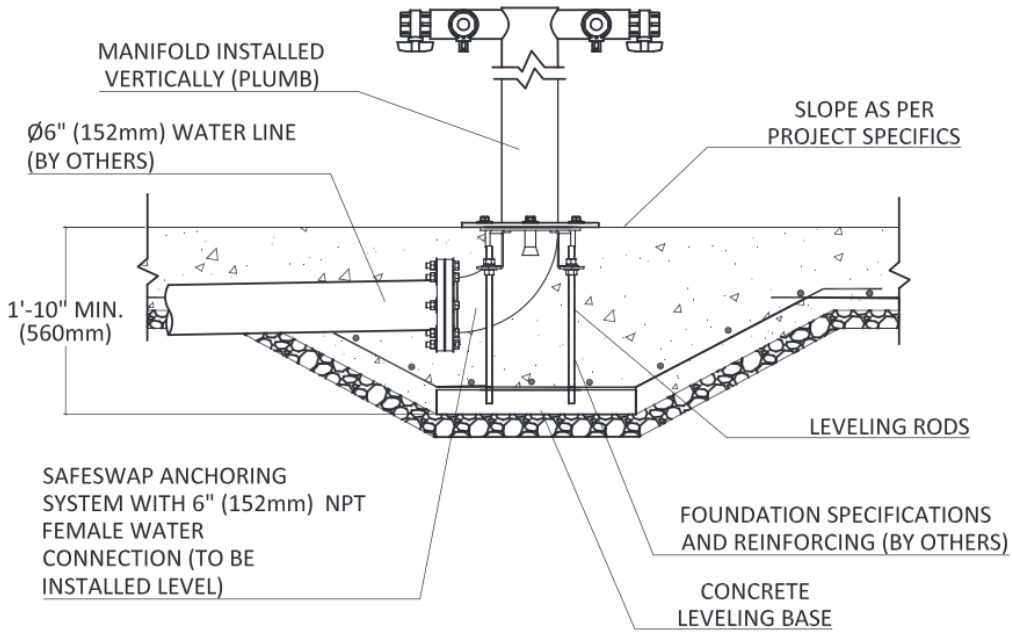
4 TYP. DETAIL SAFESWAP
ON A SLOPE



1 PLAN VIEW - HEX DECK (ELEVATIONS)



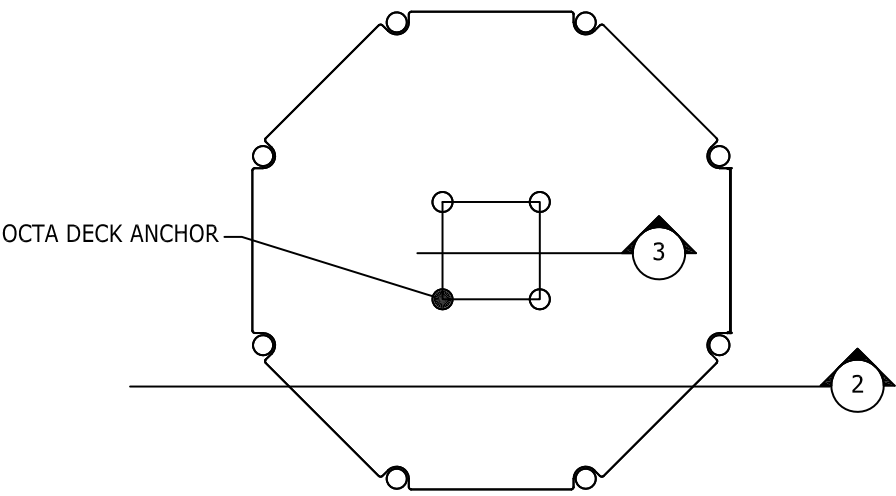
5 4" (100mm) MANIFOLD SAFESWAP
TYP. ANCHORING DETAIL



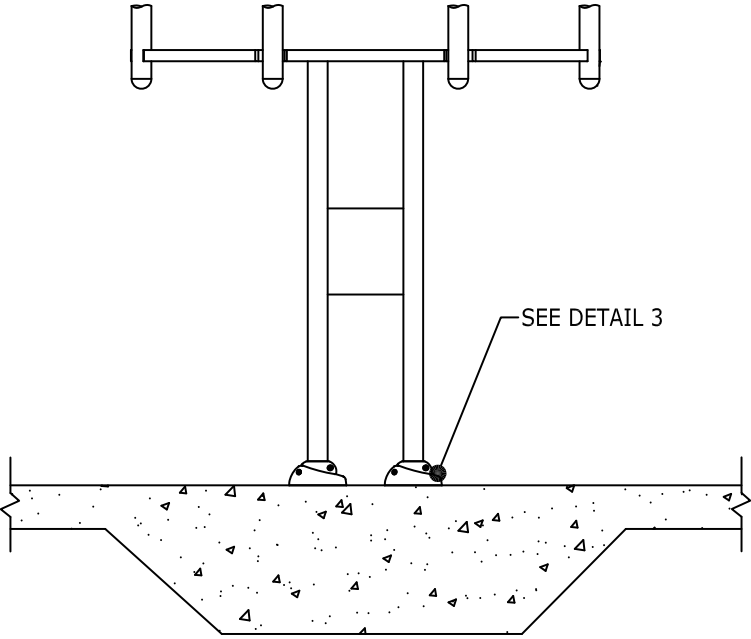
6 6" (150mm) MANIFOLD SAFESWAP
TYP. ANCHORING DETAIL

GENERAL SPECIFICATIONS:

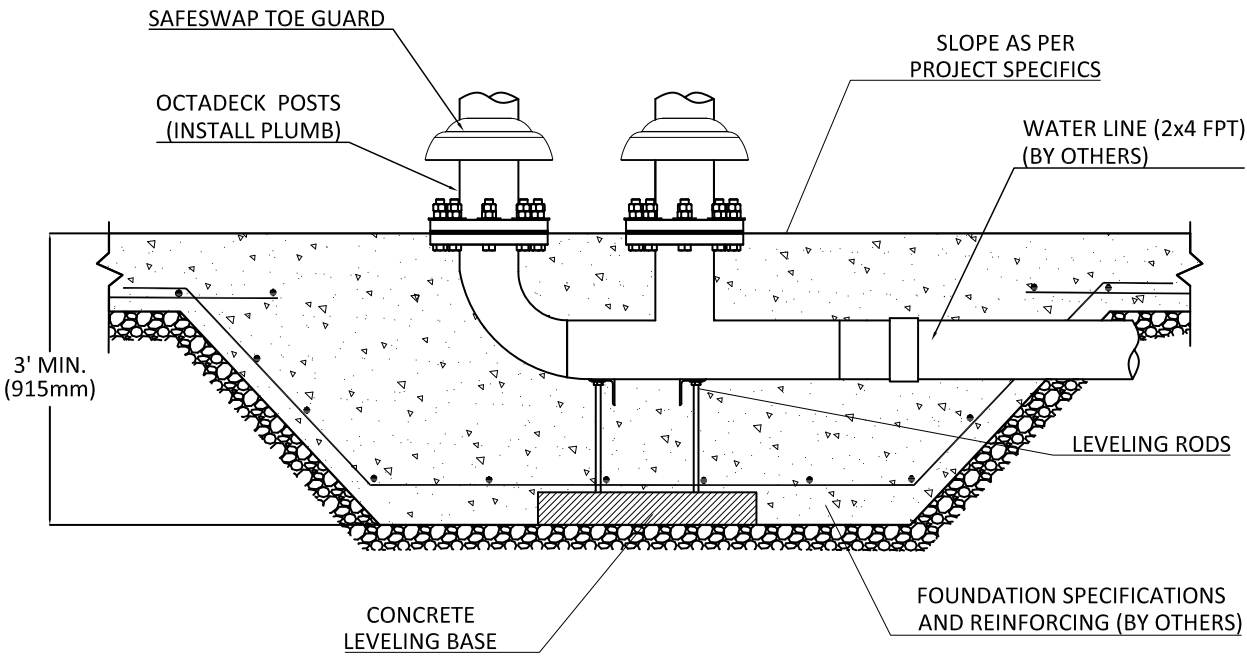
1. THESE DETAILS ARE GENERIC AND PROVIDE AN OVERVIEW OF THE SCOPE OF WORK DURING CONSTRUCTION/ INSTALLATION. REFER TO THE PROJECT FINAL INSTALLATION DRAWINGS FOR INFORMATION SPECIFIC TO YOUR PROJECT.
2. DESIGN OF CONCRETE SLAB, BY OTHERS. WE RECOMMEND AS A MINIMUM:
 - 10"-12" (250-300mm) MIN. THICKENED REINFORCED CONCRETE SLAB (U.N.O.) MIN. THICKNESS IS DEPENDANT ON MIN. ANCHOR EMBEDMENT REQUIRED.
 - UNDER ELEVATION DECKS (OFFSET OF 12" (300mm) FROM DECK EDGE
 - REINFORCED WITH #5 (15M) REBAR @ 12" (300mm) C/C BOTH WAYS
 - MIN. CONCRETE STRENGTH $f'c = 3600\text{psi}$ (25Mpa) @ 28 DAYS
 - AIR-ENTRAINED CONCRETE (IN REGIONS SUBJECTED TO FREEZE & THAW)
 - VERIFY LOCAL CODES AND STANDARDS FOR OTHER LOCAL REQUIREMENTS
3. FOR FURTHER DETAILS AND INFORMATION, REFER TO THE INSTALLATION, OPERATION, AND MAINTENANCE MANUALS.



1 PLAN VIEW - OCTA DECK (ELEVATIONS)



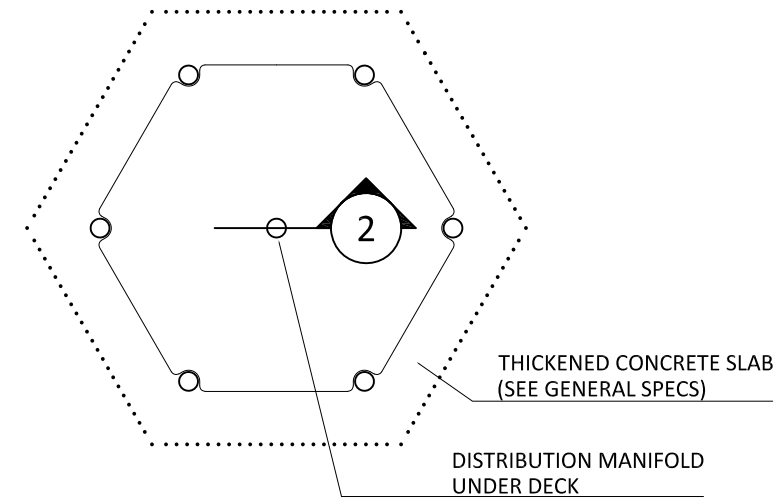
2 ELEVATION VIEW OCTA DECK INSTALLATION



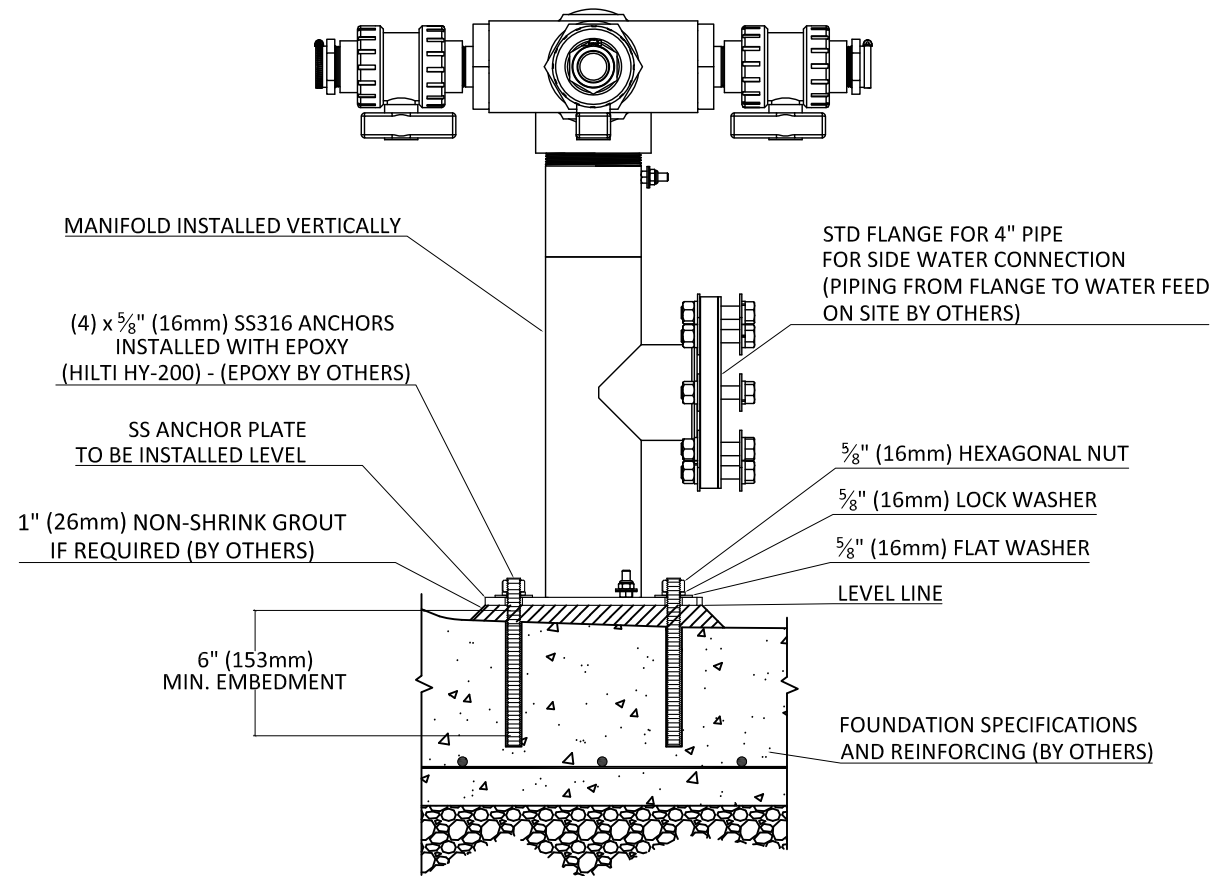
3 TYP. OCTA-DECK SAFESWAP ANCHORING DETAIL

GENERAL SPECIFICATIONS:

1. THESE DETAILS ARE GENERIC AND PROVIDE AN OVERVIEW OF THE SCOPE OF WORK DURING CONSTRUCTION/ INSTALLATION. REFER TO THE PROJECT FINAL INSTALLATION DRAWINGS FOR INFORMATION SPECIFIC TO YOUR PROJECT.
2. DESIGN OF CONCRETE SLAB, BY OTHERS. WE RECOMMEND AS A MINIMUM:
 - 10"-12" (250-300mm) MIN. THICKENED REINFORCED CONCRETE SLAB (U.N.O.) MIN. THICKNESS IS DEPENDANT ON MIN. ANCHOR EMBEDMENT REQUIRED.
 - UNDER ELEVATION DECKS (OFFSET OF 12" (300mm) FROM DECK EDGE
 - REINFORCED WITH #5 (15M) REBAR @ 12" (300mm) C/C BOTH WAYS
 - MIN. CONCRETE STRENGTH $f'c = 3600\text{psi}$ (25Mpa) @ 28 DAYS
 - AIR-ENTRAINED CONCRETE (IN REGIONS SUBJECTED TO FREEZE & THAW)
 - VERIFY LOCAL CODES AND STANDARDS FOR OTHER LOCAL REQUIREMENTS
3. FOR FURTHER DETAILS AND INFORMATION, REFER TO THE INSTALLATION, OPERATION, AND MAINTENANCE MANUALS.



1 PLAN VIEW - HEX DECK (ELEVATIONS)



2 FOR POOL REFURBISHMENT
4" (100mm) MANIFOLD WITH SIDE FLANGE
WATER CONNECTION AND LEVELING STUDS

Elevations™ Simplified Materials Specifications

1. Structural Tubing: Tubing shall be type 304/304L stainless steel pipes, schedule 10 minimum and highly resistant to corrosive environments. Main support posts shall be made of 4,5” (11.4cm) stainless steel pipe.
2. Decks and Stairs: All decks & stairs shall be constructed from 12 GA (.105” [2.6mm]) minimum 304/304L stainless steel sheet perforated for better drainage. Deck and Stair protective coating shall integrate an anti-skid surface suitable for bare feet use.
3. Protective coating / Painted Finish: All stainless steel parts, except noted, shall be coated with a Super Durable grade heat-cured polyester powder coating that offers superior UV, gloss and chemical resistance; and is suitable for high traffic environments. Super Durable coating offers superior properties for long lasting durability and protection for indoor and outdoor high traffic environments compared to regular outdoor polyester powder coating and outdoor liquid coating.
4. Seeflow™ Polymer parts: Polymer plastic parts shall be constructed of Seeflow™ Polymer material exclusively developed for the aquatic play environment. It shall be a diaphanous (transparent) plastic that has a high resistance to impact, is highly resistant to vandalism, and is flame retardant. The Seeflow™ polymer shall have outstanding dimensional stability, chemical resistance, UV stability, and exceptional translucence.
5. Barrier Panels: Shall be constructed from highly resistant and durable polycarbonate material. Material shall be UV treated for maximum durability and resistance. Barrier Panels shall be designed to prevent kids from climbing and be see-through. They should be available clear or with transparent colored graphics. Barrier Panels shall be ½” (12mm) thick minimum.
6. Railing Barrier (if applicable): Shall be constructed of type 304/304L stainless steel pipes, schedule 10 minimum and highly resistant to corrosive environments. The barrier shall be safely constructed to prevent kids from climbing.
7. Below Deck Barrier: Hex Deck, Octa Deck and Stairs, without sufficient head clearance to circulate underneath, shall have see-through barriers constructed from highly resistant and durable polycarbonate material to prevent people from going underneath. Waterslides without sufficient head clearance shall be blocked off with netting. The netting shall be a black polyester netting with 2” inch (50mm) mesh openings. Each structure shall have a locking device to allow authorized access to valves underneath the deck.
8. Nozzles: Shall be manufactured from lead-free Brass and/or 304/304L Stainless Steel and/or Ultra-High Molecular Weight Polyethylene (UHMW) highly resistant to UV, water and corrosive environments. Nozzles shall be exempt of hazardous substances, lead or harmful chemicals.
9. Toe Guards: Shall be constructed of the colored Soft Touch Elastomer developed exclusively for the aquatic play environment in order to cover the anchoring assembly hardware from pinch points and protrusions. Toe Guards shall have flexible rubber-like characteristics, a matte highly durable and slip-resistant finish, with excellent UV and chemical resistance.
10. Waterslide – PrecisionRide™ with LRTM Process: PrecisionRide™ series by Vortex, 36-inch (91.4 cm) Open Flume and 32-inch (81.3 cm) Closed tube fiberglass slides shall be manufactured using a Light Resin Transfer Molding (LRTM) system providing unprecedented precision, dependable manufacturing quality and low environmental impact. At least 90% of all fiberglass flume parts are to be LRTM with both sides having a 600-grit surface finish or better. Standard flume sections shall comply with minimum material requirements of ASTM F2376. Finish surface shall be high quality isophthalic polyester colored gelcoat and resin shall be premium quality promoted low profile polyester providing good resistance to osmosis blistering. All glass reinforcement shall be E Glass type or better. Interior and exterior of the fiberglass flume to have a minimum 0.018 to 0.20-inch (0.45 to 0.50 mm) gelcoat thickness. WaterSlide over 6’ (1.8m) shall be designed and manufactured in accordance with international standard ASTM F2376, European standard EN1069-1 according to the project.
11. Waterslides– Classic with Hand Lay-up/Spray-up process: All 22-inch (55.9 cm) Kiddie Slide, 30,75-inch (78.1 cm) Open flume and 31,625-inch (80.3 cm) Close flume slide section shall be manufactured with an open mold hand lay-up process using high quality isophthalic polyester colored gelcoat and a polyester resin system with isophthalic and orthophthalic resins. Fiberglass reinforcements shall be continuous roving chop fibers, woven roving and shall be “E” glass type. Standard flume section shall comply with minimum material requirements of ASTM F2376. Interior of the fiberglass flume (riding surface) to have a minimum 0.018 to 0.20-inch (0.45 to 0.50 mm) gelcoat thickness with a 600-grit smooth finish. Exterior faces to be coated with a color urethane UV protective coating.
12. Mounting and Assembly Hardware: All hardware shall be made of high corrosion resistance 316/316L stainless steel grade to offer the best durability and protection.
13. Safety Craftsmanship: All edges shall be machined to a rounded edge. All welds shall be smoothed, watertight and factory pressure tested. Water sprays nozzles shall be designed to prevent any protrusion or recessed. All Elevations aquatic play structures shall be designed and manufactured in accordance with Vortex Quality Management System registered under ISO-9001:2015, international industry safety standards ASTM F2461 and F2376 or European safety standard EN 13451-8 and EN 1069-1 according to the project.



vortex-intl.com

Vortex Aquatic Structures International
info@vortex-intl.com

1.877.586.7839 (USA & Canada)
+1.514.694.3868 (International)

© 2021 Vortex Aquatic Structures International