

Lighting System

Pole / Fixture Summary						
Pole ID	Pole Height	Mtg Height	Fixture Qty	Luminaire Type	Load	Circuit
A1-A2	60'	60'	3	TLC-LED-1200	3.51 kW	A
		16'	1	TLC-BT-575	0.58 kW	A
B1	60'	60'	6	TLC-LED-1200	7.02 kW	A
		60'	1	TLC-LED-1500	1.41 kW	A
		16'	1	TLC-BT-575	0.58 kW	A
		60'	2	TLC-LED-550	1.08 kW	A
B2	60'	60'	4	TLC-LED-1200	4.68 kW	A
		60'	1	TLC-LED-1500	1.41 kW	A
		60'	1	TLC-LED-550	0.54 kW	A
		60'	1	TLC-LED-900	0.89 kW	A
		16'	1	TLC-BT-575	0.58 kW	A
C1-C2	60'	60'	5	TLC-LED-1200	5.85 kW	A
		16'	2	TLC-BT-575	1.15 kW	A
C3	60'	60'	2	TLC-LED-1200	2.34 kW	A
		60'	1	TLC-LED-550	0.54 kW	A
		16'	1	TLC-BT-575	0.58 kW	A
P1	40'	40'	1	TLC-LED-1200	1.17 kW	B
		40'	1	TLC-LED-550	0.54 kW	B
P2-P3	50'	50'	2	TLC-LED-550	1.08 kW	C
P4-P5	60'	60'	3	TLC-LED-550	1.62 kW	D
12			56		50.92 kW	

Circuit Summary			
Circuit	Description	Load	Fixture Qty
A	Baseball	43.81 kW	44
B	Batting Cage	1.71 kW	2
C	Staging Area	2.16 kW	4
D	Playground	3.24 kW	6

Fixture Type Summary							
Type	Source	Wattage	Lumens	L90	L80	L70	Quantity
TLC-LED-1200	LED 5700K - 75 CRI	1170W	150,000	>120,000	>120,000	>120,000	29
TLC-LED-550	LED 5700K - 75 CRI	540W	67,000	>120,000	>120,000	>120,000	15
TLC-LED-900	LED 5700K - 75 CRI	890W	89,600	>120,000	>120,000	>120,000	1
TLC-BT-575	LED 5700K - 75 CRI	575W	52,000	>120,000	>120,000	>120,000	9
TLC-LED-1500	LED 5700K - 75 CRI	1410W	181,000	>120,000	>120,000	>120,000	2

Single Luminaire Amperage Draw Chart							
Driver (.90 min power factor)		Max Line Amperage Per Luminaire					
Single Phase Voltage	208 (60)	220 (60)	240 (60)	277 (60)	347 (60)	380 (60)	480 (60)
TLC-LED-1200	6.9	6.5	6.0	5.2	4.2	3.8	3.0
TLC-LED-550	3.2	3.0	2.8	2.4	1.9	-	1.4
TLC-LED-900	5.3	5.0	4.6	4.0	3.2	2.9	2.3
TLC-BT-575	3.4	3.2	2.9	2.5	2.0	1.8	1.5
TLC-LED-1500	8.4	7.9	7.3	6.3	5.0	4.6	3.6

Light Level Summary

Calculation Grid Summary								
Grid Name	Calculation Metric	Illumination					Circuits	Fixture Qty
		Ave	Min	Max	Max/Min	Ave/Min		
Baseball (Infield)	Horizontal Illuminance	50.1	33.4	60.1	1.80	1.50	A	44
Baseball (Outfield)	Horizontal Illuminance	32	22.5	49.1	2.18	1.42	A	44
Batting Cage	Horizontal Illuminance	31.9	21.7	44.4	2.05	1.47	B	2
Playground	Horizontal Illuminance	6.40	3.70	10.6	2.86	1.73	D	6
Staging Area	Horizontal Illuminance	5.44	1	9.40	9.55	5.44	C	4
Warm-up Left Field	Horizontal Illuminance	32.7	27.9	42.8	1.53	1.17	A	44
Warm-up Right Field	Horizontal Illuminance	30.4	22.2	39.8	1.79	1.37	A	44

From Hometown to Professional

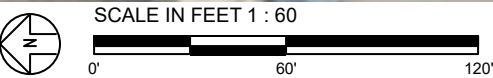


We Make It Happen.®

Not to be reproduced in whole or part without the written consent of Musco Sports Lighting, LLC. ©1981, 2023 Musco Sports Lighting, LLC.

EQUIPMENT LIST FOR AREAS SHOWN								
Pole				Luminaires				
QTY	LOCATION	SIZE	GRADE ELEVATION	MOUNTING HEIGHT	LUMINAIRE TYPE	QTY / POLE	THIS GRID	OTHER GRIDS
2	A1-A2	60'	-	15.5'	TLC-BT-575	1	1	0
				60'	TLC-LED-1200	3	3	0
1	B1	60'	-	60'	TLC-LED-1500	1	1	0
				60'	TLC-LED-550	2*	2	0
				15.5'	TLC-BT-575	1	1	0
				60'	TLC-LED-1200	5/1*	6	0
1	B2	60'	-	60'	TLC-LED-1200	4	4	0
				60'	TLC-LED-900	1	1	0
				60'	TLC-LED-1500	1	1	0
				15.5'	TLC-BT-575	1	1	0
				60'	TLC-LED-550	1	1	0
2	C1-C2	60'	-	15.5'	TLC-BT-575	2	2	0
				60'	TLC-LED-1200	5	5	0
1	C3	60'	-	60'	TLC-LED-550	1	1	0
				15.5'	TLC-BT-575	1	1	0
				60'	TLC-LED-1200	2	2	0
7	TOTALS					44	44	0

* This structure utilizes a back-to-back mounting configuration



Pole location(s) ⦿ dimensions are relative to 0,0 reference point(s) ⊗

Oriole Park

Margate,FL

GRID SUMMARY	
Name:	Baseball
Size:	Irregular 324' / 318' / 328'
Spacing:	30.0' x 30.0'
Height:	3.0' above grade

ILLUMINATION SUMMARY		
MAINTAINED HORIZONTAL FOOTCANDLES		
	Infield	Outfield
Guaranteed Average:	50	30
Scan Average:	50.13	31.99
Maximum:	60.1	49.1
Minimum:	33.4	22.5
Avg / Min:	1.50	1.42
Guaranteed Max / Min:	2	2.5
Max / Min:	1.80	2.18
UG (adjacent pts):	1.41	1.45
CU:	0.68	
No. of Points:	25	87
LUMINAIRE INFORMATION		
Applied Circuits:	A	
No. of Luminaires:	44	
Total Load:	43.8 kW	

Guaranteed Performance: The ILLUMINATION described above is guaranteed per your Musco Warranty document and includes a 0.95 dirt depreciation factor.

Field Measurements: Individual field measurements may vary from computer-calculated predictions and should be taken in accordance with IESNA RP-6-15.

Electrical System Requirements: Refer to Amperage Draw Chart and/or the "Musco Control System Summary" for electrical sizing.

Installation Requirements: Results assume ± 3% nominal voltage at line side of the driver and structures located within 3 feet (1m) of design locations.



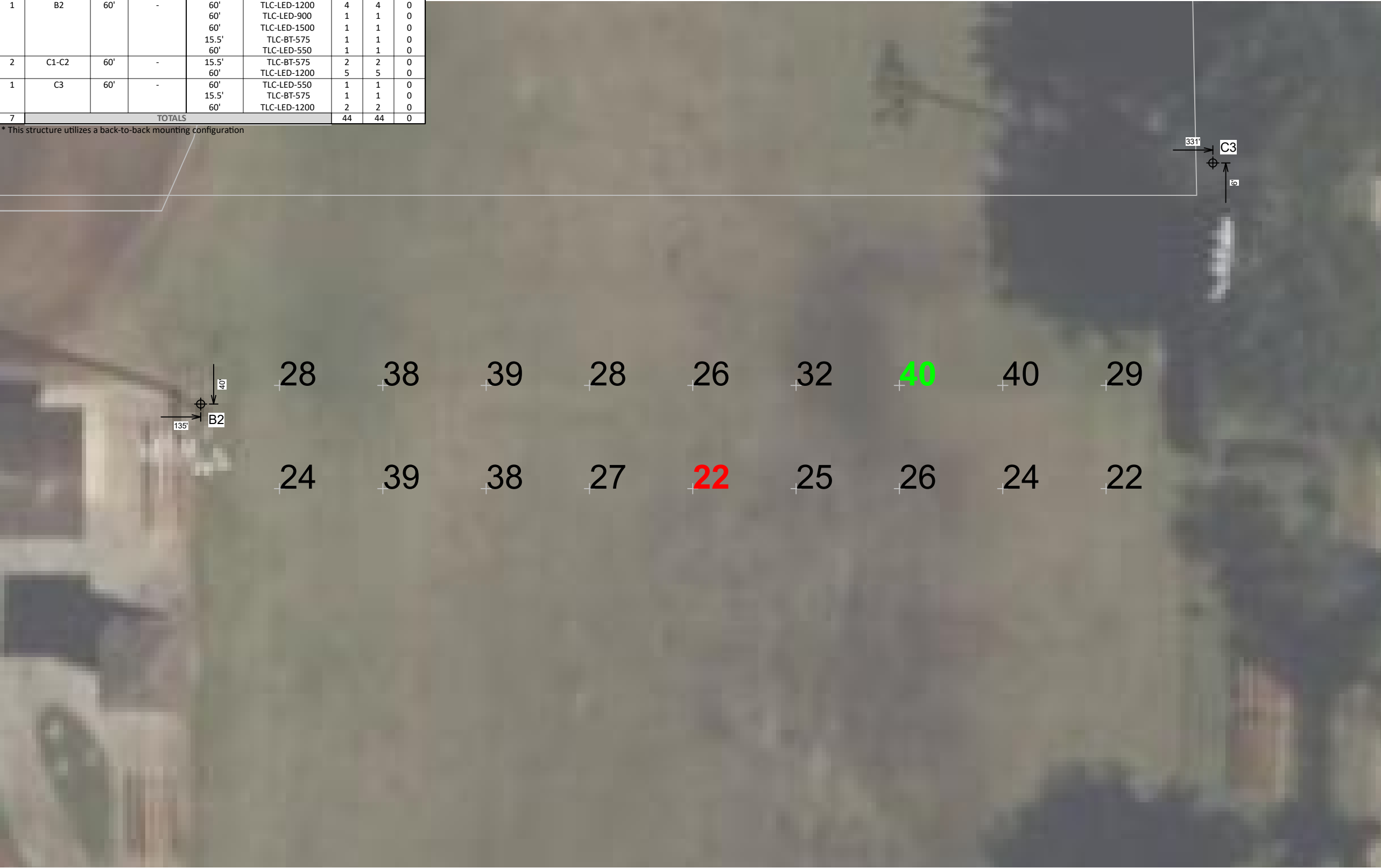
We Make It Happen.®

Not to be reproduced in whole or part without the written consent of Musco Sports Lighting, LLC. ©1981, 2023 Musco Sports Lighting, LLC.

ILLUMINATION SUMMARY

EQUIPMENT LIST FOR AREAS SHOWN								
Pole				Luminaires				
QTY	LOCATION	SIZE	GRADE ELEVATION	MOUNTING HEIGHT	LUMINAIRE TYPE	QTY / POLE	THIS GRID	OTHER GRIDS
2	A1-A2	60'	-	15.5'	TLC-BT-575	1	1	0
				60'	TLC-LED-1200	3	3	0
1	B1	60'	-	60'	TLC-LED-1500	1	1	0
				60'	TLC-LED-550	2*	2	0
				15.5'	TLC-BT-575	1	1	0
				60'	TLC-LED-1200	5/1*	6	0
1	B2	60'	-	60'	TLC-LED-1200	4	4	0
				60'	TLC-LED-900	1	1	0
				60'	TLC-LED-1500	1	1	0
				15.5'	TLC-BT-575	1	1	0
				60'	TLC-LED-550	1	1	0
2	C1-C2	60'	-	15.5'	TLC-BT-575	2	2	0
				60'	TLC-LED-1200	5	5	0
1	C3	60'	-	60'	TLC-LED-550	1	1	0
				15.5'	TLC-BT-575	1	1	0
7	TOTALS					44	44	0

* This structure utilizes a back-to-back mounting configuration



Oriole Park

Margate,FL

GRID SUMMARY	
Name:	Warm-up Right Field
Size:	Irregular 324' / 318' / 328'
Spacing:	20.0' x 20.0'
Height:	3.0' above grade

ILLUMINATION SUMMARY	
MAINTAINED HORIZONTAL FOOTCANDLES	
Entire Grid	
Guaranteed Average:	30
Scan Average:	30.35
Maximum:	39.8
Minimum:	22.2
Avg / Min:	1.37
Guaranteed Max / Min:	2.5
Max / Min:	1.79
UG (adjacent pts):	1.62
CU:	0.04
No. of Points:	18
LUMINAIRE INFORMATION	
Applied Circuits:	A
No. of Luminaires:	44
Total Load:	43.8 kW

Guaranteed Performance: The ILLUMINATION described above is guaranteed per your Musco Warranty document and includes a 0.95 dirt depreciation factor.

Field Measurements: Individual field measurements may vary from computer-calculated predictions and should be taken in accordance with IESNA RP-6-15.

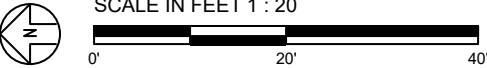
Electrical System Requirements: Refer to Amperage Draw Chart and/or the "Musco Control System Summary" for electrical sizing.

Installation Requirements: Results assume ± 3% nominal voltage at line side of the driver and structures located within 3 feet (1m) of design locations.



We Make It Happen®

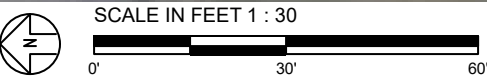
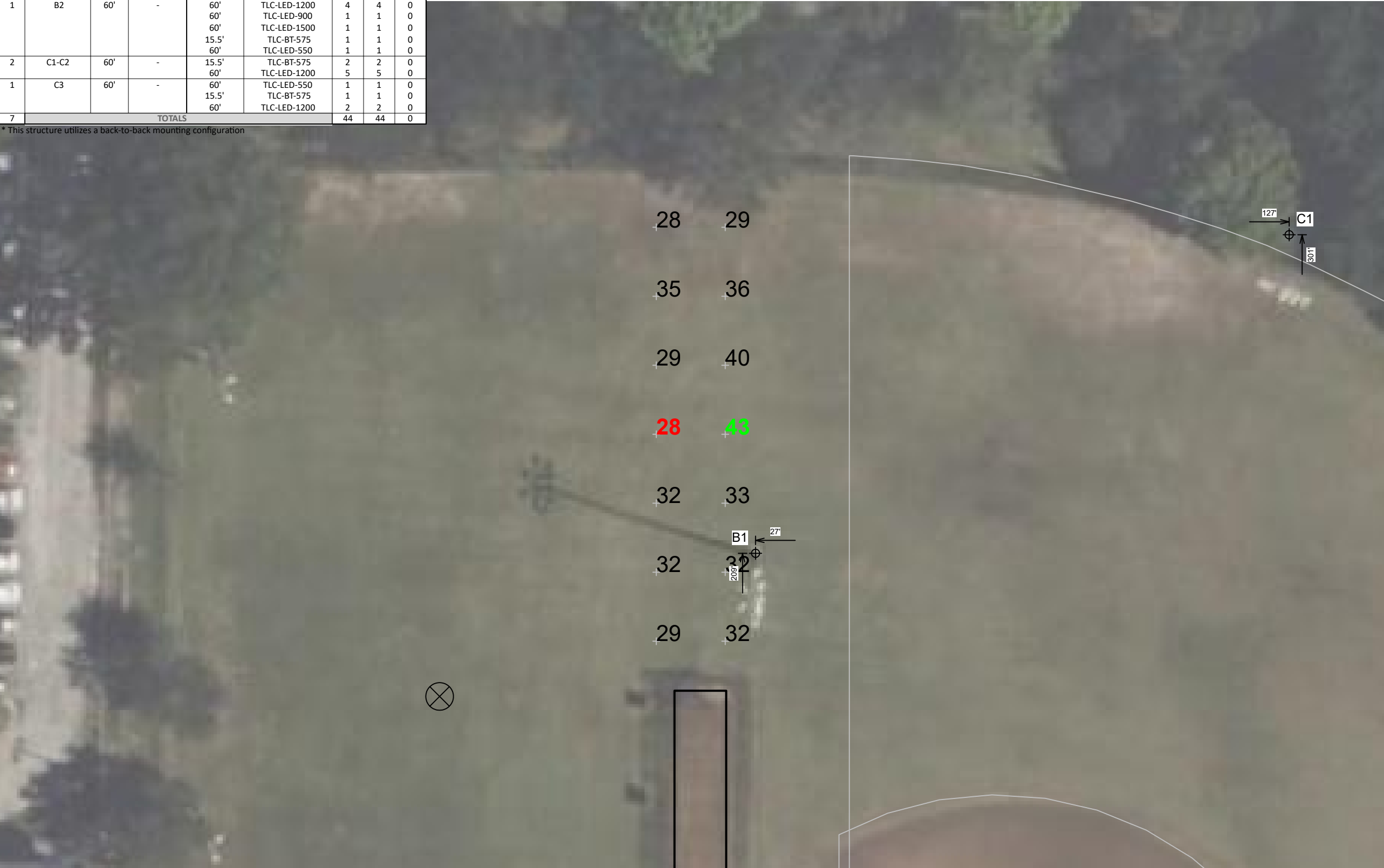
Not to be reproduced in whole or part without the written consent of Musco Sports Lighting, LLC. ©1981, 2023 Musco Sports Lighting, LLC.



Pole location(s) ⦿ dimensions are relative to 0,0 reference point(s) ⊗

EQUIPMENT LIST FOR AREAS SHOWN								
Pole				Luminaires				
QTY	LOCATION	SIZE	GRADE ELEVATION	MOUNTING HEIGHT	LUMINAIRE TYPE	QTY / POLE	THIS GRID	OTHER GRIDS
2	A1-A2	60'	-	15.5'	TLC-BT-575	1	1	0
				60'	TLC-LED-1200	3	3	0
1	B1	60'	-	60'	TLC-LED-1500	1	1	0
				60'	TLC-LED-550	2*	2	0
				15.5'	TLC-BT-575	1	1	0
				60'	TLC-LED-1200	5/1*	6	0
1	B2	60'	-	60'	TLC-LED-1200	4	4	0
				60'	TLC-LED-900	1	1	0
				60'	TLC-LED-1500	1	1	0
				15.5'	TLC-BT-575	1	1	0
				60'	TLC-LED-550	1	1	0
2	C1-C2	60'	-	15.5'	TLC-BT-575	2	2	0
				60'	TLC-LED-1200	5	5	0
1	C3	60'	-	60'	TLC-LED-550	1	1	0
				15.5'	TLC-BT-575	1	1	0
				60'	TLC-LED-1200	2	2	0
7	TOTALS					44	44	0

* This structure utilizes a back-to-back mounting configuration



Pole location(s) ⊕ dimensions are relative to 0,0 reference point(s) ⊗

Oriole Park
Margate,FL

GRID SUMMARY	
Name:	Warm-up Left Field
Size:	Irregular 324' / 318' / 328'
Spacing:	20.0' x 20.0'
Height:	3.0' above grade

ILLUMINATION SUMMARY	
MAINTAINED HORIZONTAL FOOTCANDLES	
Entire Grid	
Guaranteed Average:	30
Scan Average:	32.73
Maximum:	42.8
Minimum:	27.9
Avg / Min:	1.17
Guaranteed Max / Min:	2.5
Max / Min:	1.53
UG (adjacent pts):	1.53
CU:	0.03
No. of Points:	14
LUMINAIRE INFORMATION	
Applied Circuits:	A
No. of Luminaires:	44
Total Load:	43.8 kW

Guaranteed Performance: The ILLUMINATION described above is guaranteed per your Musco Warranty document and includes a 0.95 dirt depreciation factor.

Field Measurements: Individual field measurements may vary from computer-calculated predictions and should be taken in accordance with IESNA RP-6-15.

Electrical System Requirements: Refer to Amperage Draw Chart and/or the "Musco Control System Summary" for electrical sizing.

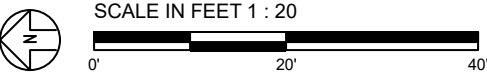
Installation Requirements: Results assume ± 3% nominal voltage at line side of the driver and structures located within 3 feet (1m) of design locations.



Not to be reproduced in whole or part without the written consent of Musco Sports Lighting, LLC. ©1981, 2023 Musco Sports Lighting, LLC.

ILLUMINATION SUMMARY

EQUIPMENT LIST FOR AREAS SHOWN								
Pole				Luminaires				
QTY	LOCATION	SIZE	GRADE ELEVATION	MOUNTING HEIGHT	LUMINAIRE TYPE	QTY / POLE	THIS GRID	OTHER GRIDS
1	P1	40'	-	40'	TLC-LED-550	1	1	0
				40'	TLC-LED-1200	1	1	0
1	TOTALS					2	2	0



Oriole Park

Margate,FL

GRID SUMMARY	
Name:	Batting Cage
Size:	15' x 75'
Spacing:	10.0' x 10.0'
Height:	3.0' above grade

ILLUMINATION SUMMARY	
MAINTAINED HORIZONTAL FOOTCANDLES	
	Entire Grid
Guaranteed Average:	30
Scan Average:	31.87
Maximum:	44.4
Minimum:	21.7
Avg / Min:	1.47
Guaranteed Max / Min:	2.5
Max / Min:	2.05
UG (adjacent pts):	1.35
CU:	0.34
No. of Points:	16
LUMINAIRE INFORMATION	
Applied Circuits:	B
No. of Luminaires:	2
Total Load:	1.71 kW

Guaranteed Performance: The ILLUMINATION described above is guaranteed per your Musco Warranty document and includes a 0.95 dirt depreciation factor.

Field Measurements: Individual field measurements may vary from computer-calculated predictions and should be taken in accordance with IESNA RP-6-15.

Electrical System Requirements: Refer to Amperage Draw Chart and/or the "Musco Control System Summary" for electrical sizing.

Installation Requirements: Results assume ± 3% nominal voltage at line side of the driver and structures located within 3 feet (1m) of design locations.



EQUIPMENT LIST FOR AREAS SHOWN								
Pole				Luminaires				
QTY	LOCATION	SIZE	GRADE ELEVATION	MOUNTING HEIGHT	LUMINAIRE TYPE	QTY / POLE	THIS GRID	OTHER GRIDS
2	P2-P3	50'	-	50'	TLC-LED-550	2	2	0
2	TOTALS					4	4	0

Oriole Park

Margate,FL

GRID SUMMARY	
Name:	Staging Area
Size:	110' x 280'
Spacing:	20.0' x 20.0'
Height:	3.0' above grade

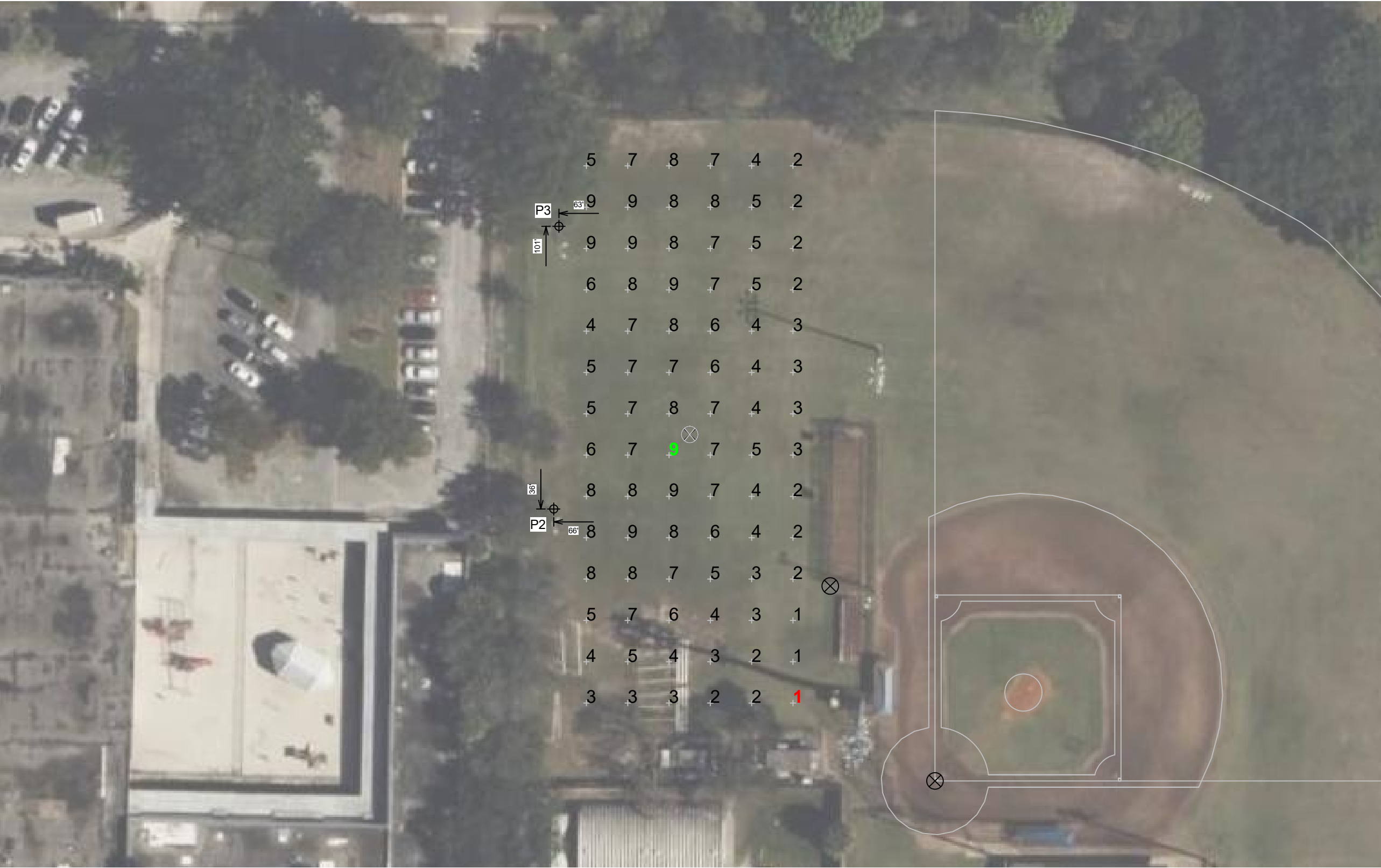
ILLUMINATION SUMMARY	
MAINTAINED HORIZONTAL FOOTCANDLES	
	Entire Grid
Guaranteed Average:	5
Scan Average:	5.44
Maximum:	9.4
Minimum:	1.0
Avg / Min:	5.50
Max / Min:	9.55
UG (adjacent pts):	2.02
CU:	0.74
No. of Points:	84
LUMINAIRE INFORMATION	
Applied Circuits:	C
No. of Luminaires:	4
Total Load:	2.16 kW


Guaranteed Performance: The ILLUMINATION described above is guaranteed per your Musco Warranty document and includes a 0.95 dirt depreciation factor.

Field Measurements: Individual field measurements may vary from computer-calculated predictions and should be taken in accordance with IESNA RP-6-15.

Electrical System Requirements: Refer to Amperage Draw Chart and/or the "Musco Control System Summary" for electrical sizing.

Installation Requirements: Results assume ± 3% nominal voltage at line side of the driver and structures located within 3 feet (1m) of design locations.





SCALE IN FEET 1 : 50

0'

50'

100'

Pole location(s)  dimensions are relative to 0,0 reference point(s) 

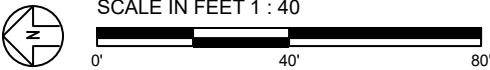


We Make It Happen®

Not to be reproduced in whole or part without the written consent of Musco Sports Lighting, LLC. ©1981, 2023 Musco Sports Lighting, LLC.

ILLUMINATION SUMMARY

EQUIPMENT LIST FOR AREAS SHOWN								
Pole				Luminaires				
QTY	LOCATION	SIZE	GRADE ELEVATION	MOUNTING HEIGHT	LUMINAIRE TYPE	QTY / POLE	THIS GRID	OTHER GRIDS
2	P4-P5	60'	-	60'	TLC-LED-550	3	3	0
2	TOTALS					6	6	0



Oriole Park

Margate,FL

GRID SUMMARY	
Name:	Playground
Size:	180' x 220'
Spacing:	20.0' x 20.0'
Height:	3.0' above grade

ILLUMINATION SUMMARY	
MAINTAINED HORIZONTAL FOOTCANDLES	
Entire Grid	
Guaranteed Average:	5
Scan Average:	6.40
Maximum:	10.6
Minimum:	3.7
Avg / Min:	1.72
Max / Min:	2.86
UG (adjacent pts):	1.72
CU:	0.65
No. of Points:	99
LUMINAIRE INFORMATION	
Applied Circuits:	D
No. of Luminaires:	6
Total Load:	3.24 kW

Guaranteed Performance: The ILLUMINATION described above is guaranteed per your Musco Warranty document and includes a 0.95 dirt depreciation factor.

Field Measurements: Individual field measurements may vary from computer-calculated predictions and should be taken in accordance with IESNA RP-6-15.

Electrical System Requirements: Refer to Amperage Draw Chart and/or the "Musco Control System Summary" for electrical sizing.

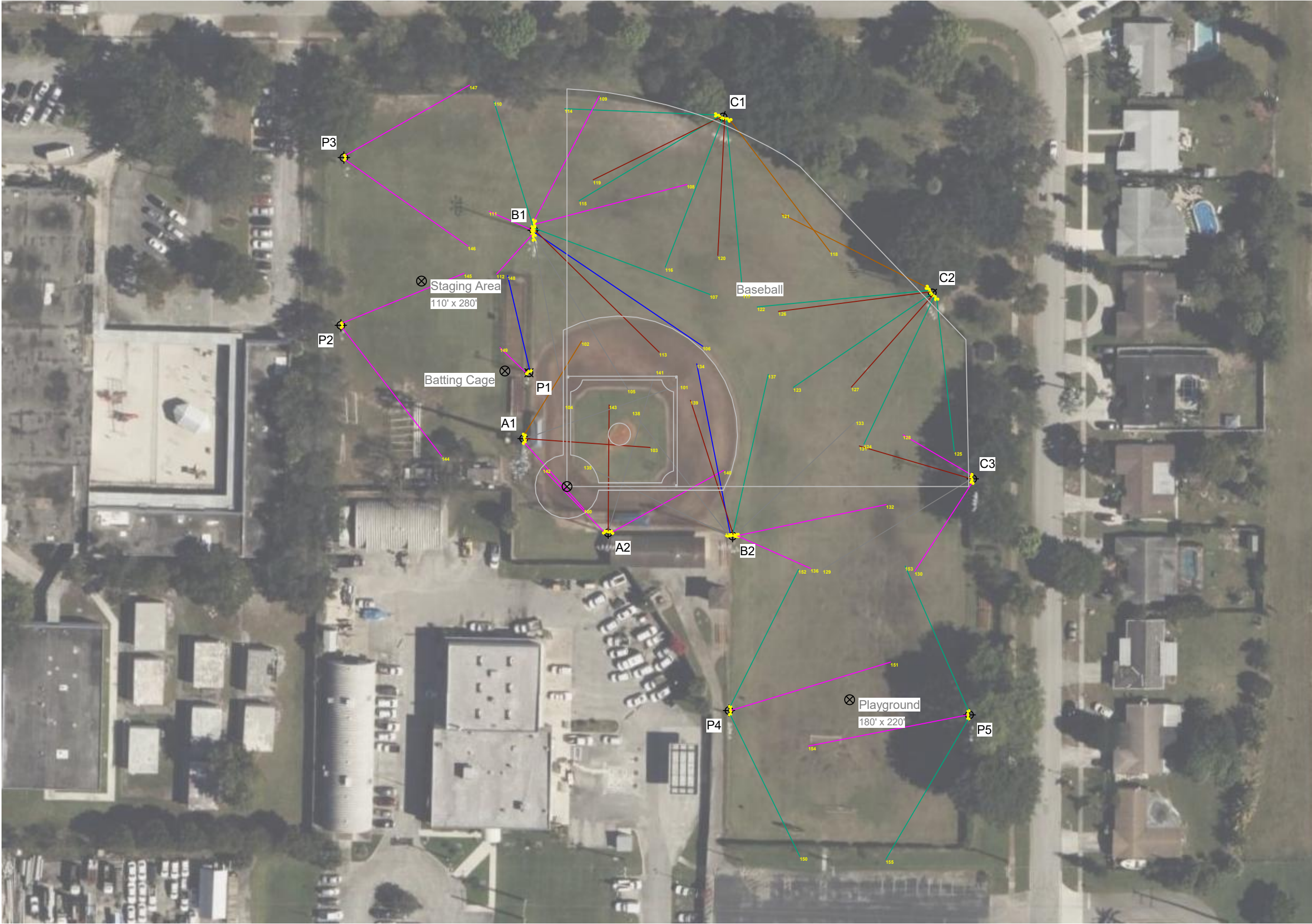
Installation Requirements: Results assume ± 3% nominal voltage at line side of the driver and structures located within 3 feet (1m) of design locations.



We Make It Happen.®

Not to be reproduced in whole or part without the written consent of Musco Sports Lighting, LLC. ©1981, 2023 Musco Sports Lighting, LLC.

ILLUMINATION SUMMARY



Oriole Park

Margate,FL

EQUIPMENT LAYOUT

INCLUDES:

- Baseball
- Batting Cage
- Playground
- Staging Area

Electrical System Requirements: Refer to Amperage Draw Chart and/or the "Musco Control System Summary" for electrical sizing.

Installation Requirements: Results assume ± 3% nominal voltage at line side of the driver and structures located within 3 feet (1m) of design locations.

EQUIPMENT LIST FOR AREAS SHOWN						
Pole				Luminaires		
QTY	LOCATION	CLASS	GRADE ELEVATION	MOUNTING HEIGHT	LUMINAIRE TYPE	QTY / POLE
2	A1-A2		-	15.5'	TLC-BT-575	1
				60'	TLC-LED-1200	3
1	B1		-	60'	TLC-LED-1500	1
				60'	TLC-LED-550	2*
				15.5'	TLC-BT-575	1
				60'	TLC-LED-1200	5/1*
1	B2		-	60'	TLC-LED-1200	4
				60'	TLC-LED-900	1
				60'	TLC-LED-1500	1
				15.5'	TLC-BT-575	1
				60'	TLC-LED-550	1
2	C1-C2		-	15.5'	TLC-BT-575	2
				60'	TLC-LED-1200	5
1	C3		-	60'	TLC-LED-550	1
				15.5'	TLC-BT-575	1
				60'	TLC-LED-1200	2
1	P1		-	40'	TLC-LED-550	1
				40'	TLC-LED-1200	1
2	P2-P3		-	50'	TLC-LED-550	2
2	P4-P5		-	60'	TLC-LED-550	3
12	TOTALS					56

* This structure utilizes a back-to-back mounting configuration

SINGLE LUMINAIRE AMPERAGE DRAW CHART							
Driver (.90 min power factor)		Line Amperage Per Luminaire (max draw)					
Single Phase Voltage		208 (60)	220 (60)	240 (60)	277 (60)	347 (60)	380 (60)
TLC-LED-1200		6.9	6.5	6.0	5.2	4.2	3.8
TLC-LED-550		3.2	3.0	2.8	2.4	1.9	1.4
TLC-LED-900		5.3	5.0	4.6	4.0	3.2	2.9
TLC-BT-575		3.4	3.2	2.9	2.5	2.0	1.8
TLC-LED-1500		8.4	7.9	7.3	6.3	5.0	4.6



Not to be reproduced in whole or part without the written consent of Musco Sports Lighting, LLC. ©1981, 2023 Musco Sports Lighting, LLC.

Pole location(s) ⚓ dimensions are relative to 0,0 reference point(s) ⊗