

PRELIMINARY ENGINEERING PLAN
FOR

Nove of Margate

Margate, Florida

LEGAL DESCRIPTION

PARCEL 3, "ORIOLE GOLF AND TENNIS CLUB SECTION TWO", ACCORDING TO THE PLAT THEREOF AS RECORDED IN PLAT BOOK 78, PAGE 21, OF THE PUBLIC RECORDS OF BROWARD COUNTY, FLORIDA.

TOGETHER WITH:

A PORTION OF PARCEL 4 OF SAID PLAT, "ORIOLE GOLF AND TENNIS CLUB SECTION TWO", ACCORDING TO THE PLAT THEREOF, AS RECORDED IN PLAT BOOK 78, PAGE 21, OF THE PUBLIC RECORDS OF BROWARD COUNTY, FLORIDA, MORE PARTICULARLY DESCRIBED AS FOLLOWS:

COMMENCING AT THE NORTHWEST CORNER OF SECTION 35, TOWNSHIP 48 SOUTH, RANGE 41 EAST: THENCE SOUTH 00°03'23" WEST, 292.60 FEET ALONG THE WEST BOUNDARY OF SAID SECTION TO THE POINT OF INTERSECTION WITH THE SOUTH RIGHT-OF-WAY LINE OF MARGATE BLVD. ACCORDING TO SAID PLAT: THENCE ALONG SAID SOUTH RIGHT-OF-WAY LINE OF MARGATE BLVD. THE FOLLOWING FOUR (4) COURSES: SOUTH 89°56'37" EAST, 15.94 FEET; THENCE ALONG THE ARC OF A TANGENT CURVE, BEING CONCAVE TO THE SOUTHWEST, HAVING A RADIUS OF 664.05 FEET, A DELTA OF 39°51'40", AN ARC DISTANCE OF 461.98 FEET; THENCE TANGENT TO SAID CURVE SOUTH 50°04'57" EAST, 725.16 FEET; THENCE ALONG THE ARC OF A TANGENT CURVE, CONCAVE TO THE NORTHEAST, HAVING A RADIUS OF 776.33 FEET, A DELTA OF 22°15'10", AN ARC DISTANCE OF 301.52 FEET TO THE NORTHEAST CORNER OF SAID PARCEL 3 AND THE POINT OF BEGINNING: THENCE CONTINUE ALONG SAID CURVE, HAVING A RADIUS OF 776.33 FEET, A DELTA OF 11°58'05", AN ARC DISTANCE OF 162.16 FEET (THE PRECEDING COURSE BEING COINCIDENT WITH THE SAID SOUTH RIGHT-OF-WAY LINE OF MARGATE BLVD.); THENCE SOUTH 20°36'41" WEST, 134.67 FEET; THENCE NORTH 88°35'00" WEST, 115.00 FEET TO A POINT OF THE EAST LINE OF SAID PARCEL 3, THENCE NORTH 01°25'00" EAST ALONG THE EAST LINE OF SAID PARCEL 3, A DISTANCE OF 156.02 FEET TO THE POINT OF BEGINNING.

SAID LANDS SITUATE IN THE CITY OF MARGATE, BROWARD COUNTY, FLORIDA AND CONSISTS OF 21.302 ACRES MORE OR LESS.

DEVELOPMENT TEAM

DEVELOPER: Fimiani Development Corporation
5301 North Federal Highway, Suite 350
Boca Raton, Florida 33487
Phone: 561-395-8882

**LAND USE ATTORNEY/
LAND PLANNER:** Dunay, Miskel and Backman, LLP
14 SE 4th Street, Suite 36
Boca Raton, Florida 33432
Phone: 561-405-3300

**ENGINEER/
PLANNER:** Schnars Engineering Corporation
947 Clint Moore Road
Boca Raton, Florida 33487
Phone: 561-241-6455

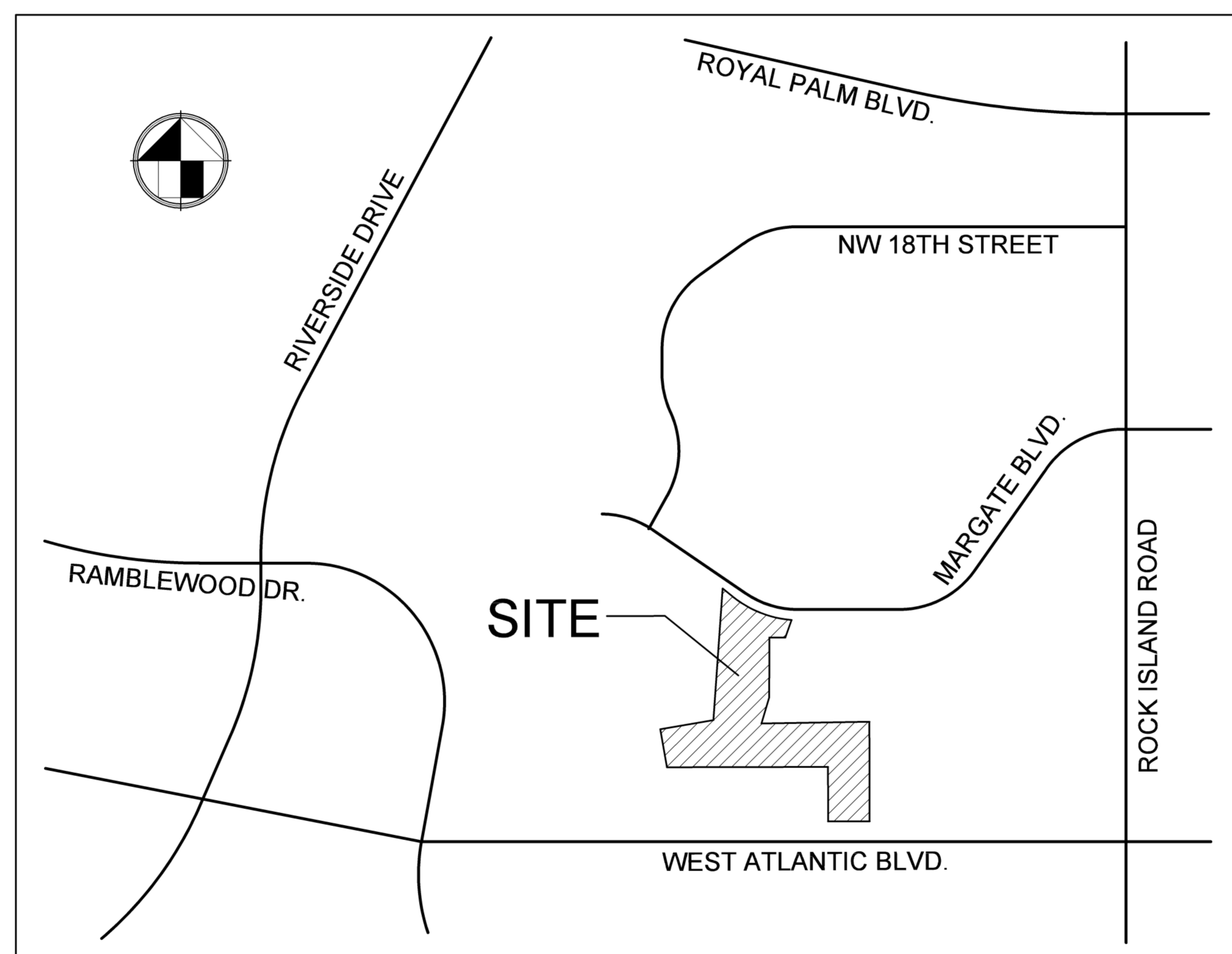
ARCHITECT: A B Design Group
1441 N. Ronald Reagan Boulevard
Longwood, Florida 32750
Phone: 407-774-6078

LANDSCAPE ARCHITECT: Peterson Design Professionals
151 Southwest 7th Terrace
Boca Raton, Florida 33486
Phone: 561-702-0136

PHOTOMETRIC ENGINEER: Lightworks, Inc.
7447 NW 48th Street, Suite B
Miami, Florida 33166
Phone: 561-641-5570

OWNER:

Margate Executive Golf Course, LLC
5301 North Federal Highway, Suite 350
Boca Raton, Florida 33487



LOCATION MAP
S 35, T 48S, R 41E
NOT TO SCALE

INDEX OF SHEETS

<u>SHEET DESCRIPTION</u>	<u>SHEET NO.</u>
MASTER PRELIMINARY ENGINEERING PLAN	C1
PRELIMINARY ENGINEERING PLAN	C2 - C4
PAVEMENT MARKING & SIGNAGE PLAN	C5 - C7
CONSTRUCTION DETAILS	C8 - C10
CANAL EXHIBIT	C11

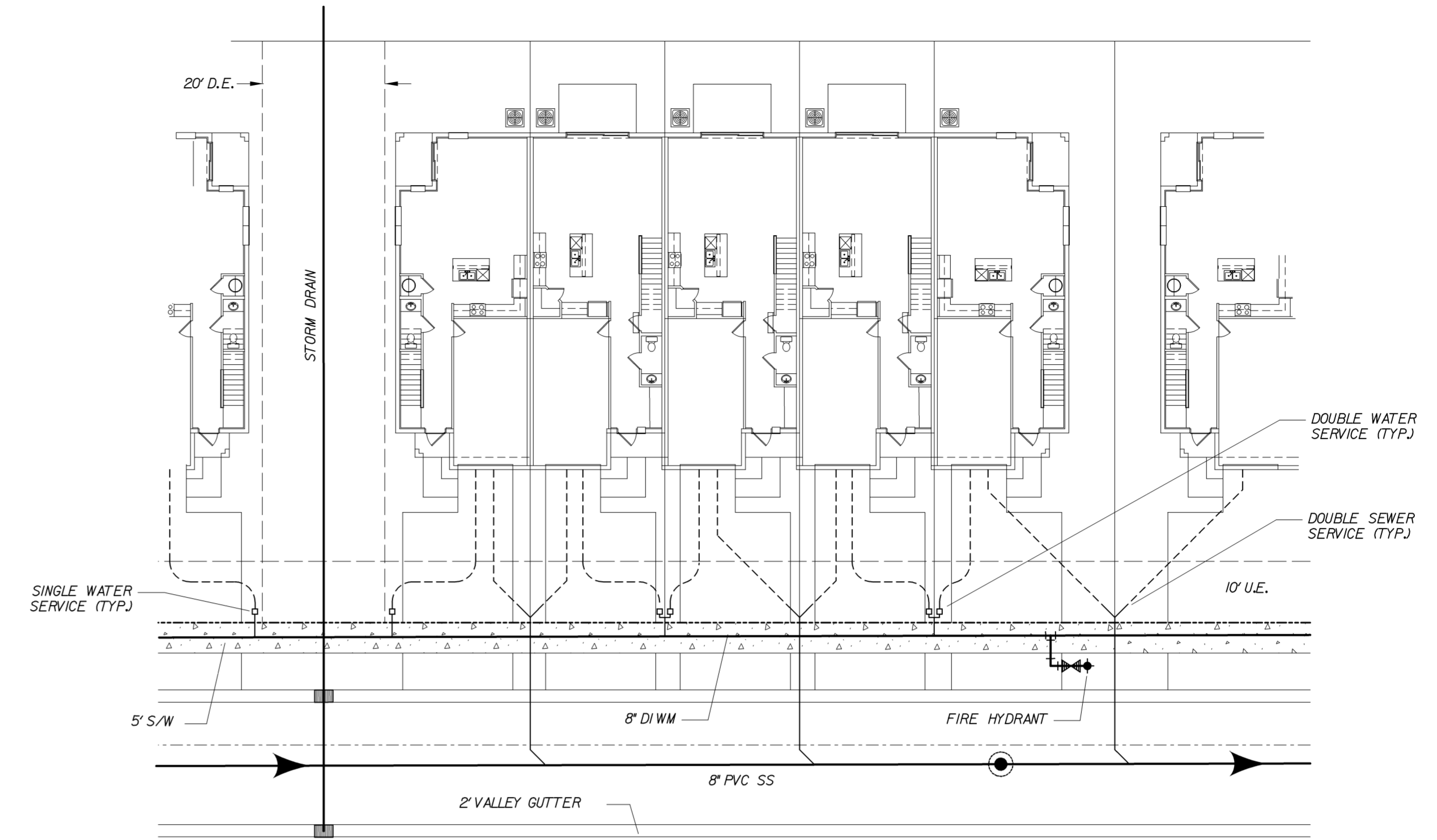
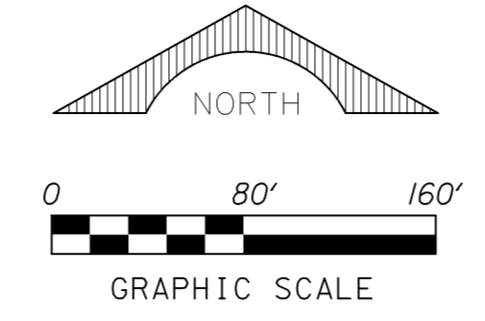
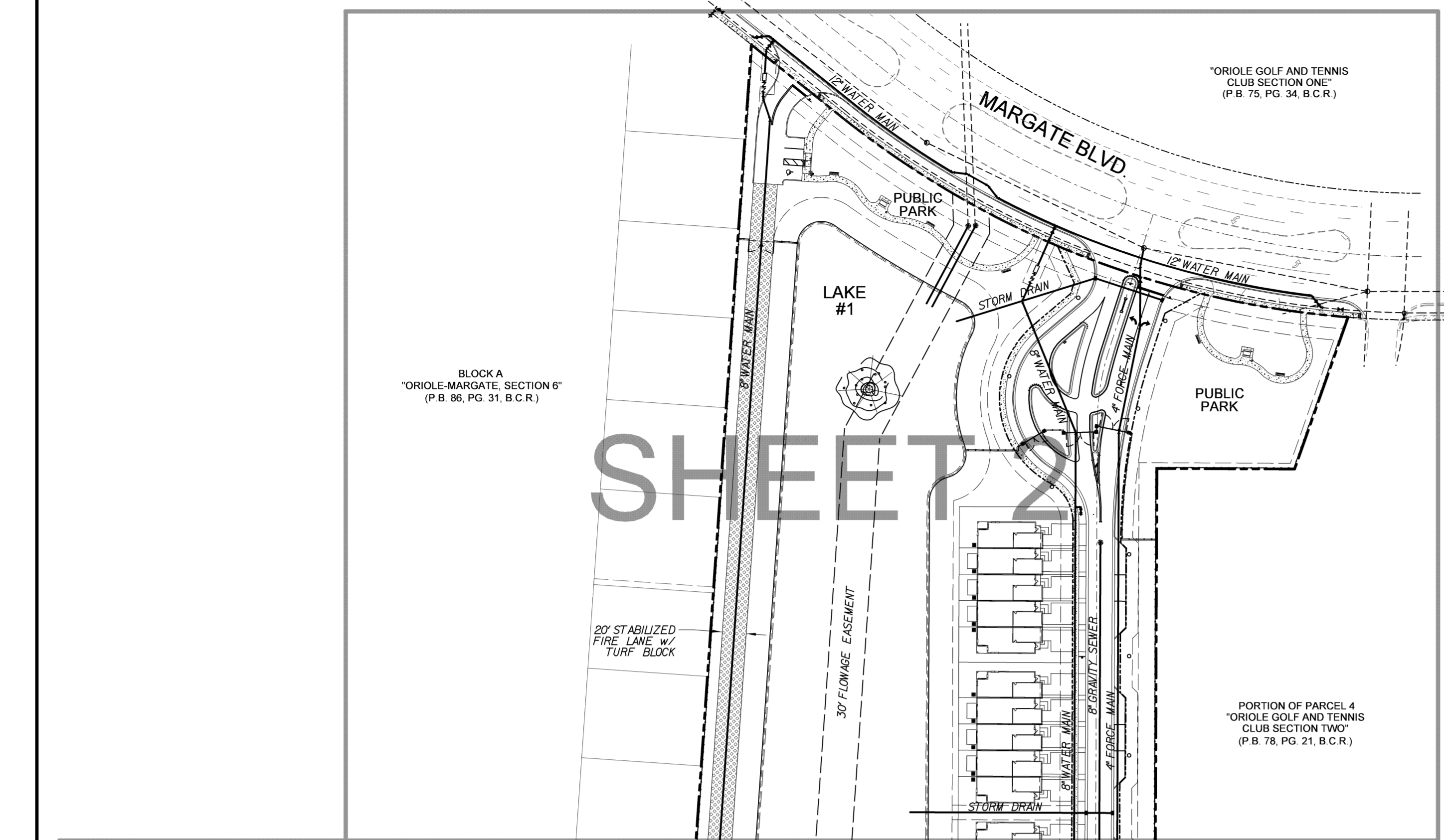
Jeffrey T. Schnars, Professional Engineer, State of Florida, License No. 46697.
This item has been digitally signed and sealed by Jeffrey T. Schnars, P.E. on 10/11/2023.
Printed copies of this document are not considered signed and sealed and the signature must be verified on any electronic copies.

SCHNARS
ENGINEERING CORPORATION

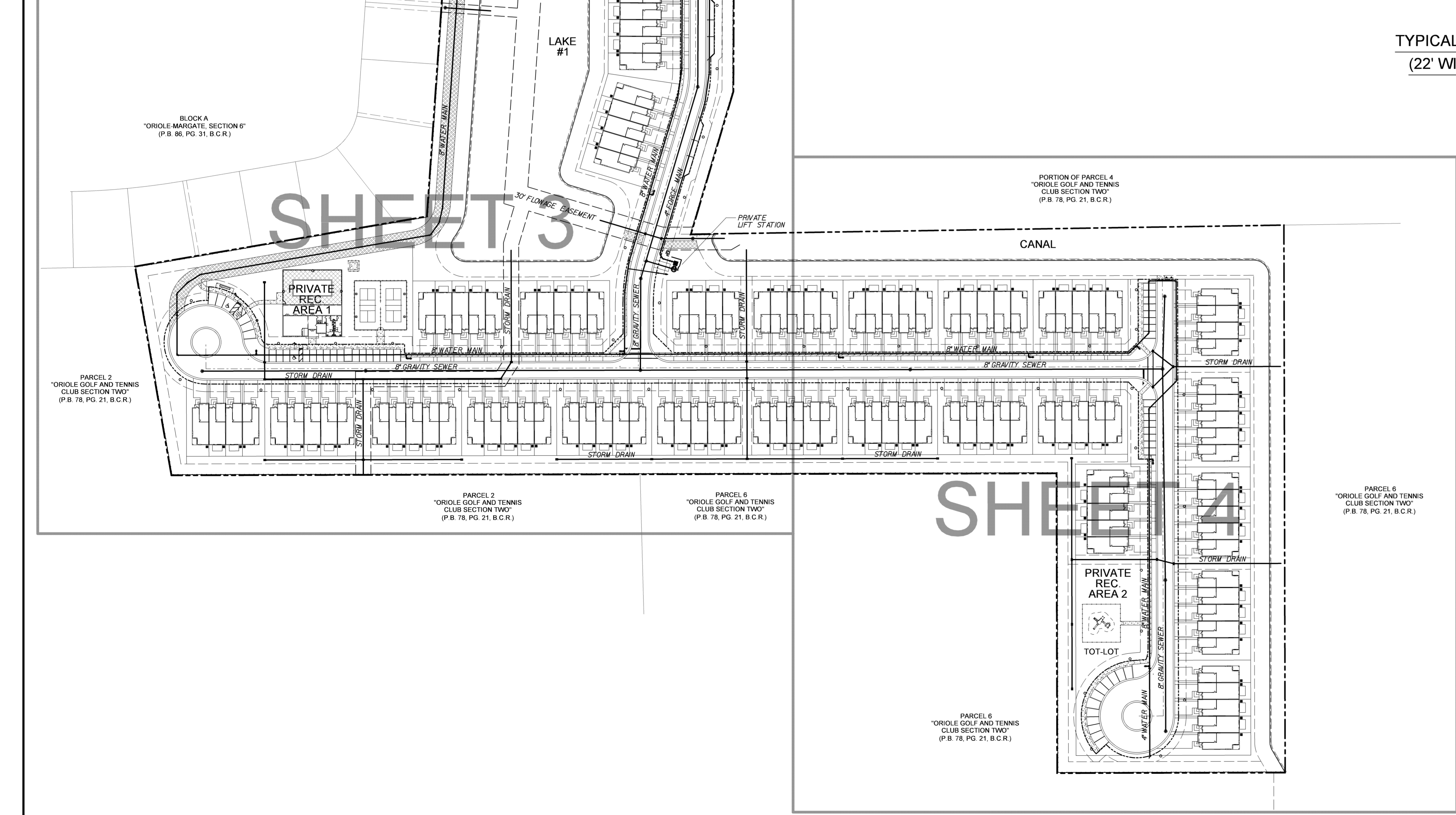
947 CLINT MOORE ROAD • BOCA RATON, FLORIDA 33487

TEL: (561) 241-6455 • FAX: (561) 241-5182

CERTIFICATE OF AUTHORIZATION No. 6640



TYPICAL WATER & SEWER DETAIL
(22' WIDE TOWNHOUSE UNITS)
N.T.S.



Jeffrey T. Schnars, Professional Engineer, State of Florida, License No. 46697.
This item has been digitally signed and sealed by Jeffrey T. Schnars, P.E. on 10/11/2023. Printed copies of this document are not considered signed and sealed and the signature must be verified on any electronic copies.

NOTES:

- FEMA FIRM FLOOD ZONES: COMMUNITY PANEL NO. 12011 C 0355 H DATED 8/18/2014 FLOOD ZONES: AE (EL. 11.0 FT. NAVD), AND X
- BROWARD COUNTY 100 YEAR FLOOD ELEVATION MAP: 12.50 FT NAVD BROWARD COUNTY 10 YEAR FLOOD ELEVATION MAP: 10.50 FT NAVD
- PROPOSED ELEVATIONS: MINIMUM FINISHED FLOOR = 12.50 FT NAVD MINIMUM ROAD = 10.50 FT NAVD DESIGN WATER LEVEL: 5.00 FT NAVD
- A DRAINAGE & FLOWAGE EASEMENT SHALL BE PROVIDED TO THE CITY OF MARGATE THROUGH THE LAKE SYSTEM.
- DURING CONSTRUCTION, THE CONTRACTOR SHALL MAINTAIN EXISTING DRAINAGE FLOW FROM MARGATE BLVD. AND ADJACENT COMMUNITIES THROUGH THE PROJECT.
- ALL HANDICAP RAMPS AND DETECTABLE WARNINGS SHALL BE INSTALLED PER FDOT INDEX 522-002.
- CURB INLET GRATE ELEVATIONS REPRESENT THE EDGE OF PAVEMENT ELEVATION.
- ALL ELEVATIONS SHOWN HEREON ARE BASED ON THE NORTH AMERICAN VERTICAL DATUM OF 1988 (NAVD 1988).
- THE CITY WILL BE GRANTED AN EASEMENT OVER THE LAKE, CANAL, LAKE MAINTENANCE EASEMENTS (LME), PUBLIC DRAINAGE EASEMENTS (PDE), AND ROADWAY TRACTS.
- ALL ONSITE DRAINAGE, WATER, & SEWER WILL BE OWNED & MAINTAINED BY THE HOMEOWNERS ASSOCIATION.

ORIGINAL: OCT. 2022

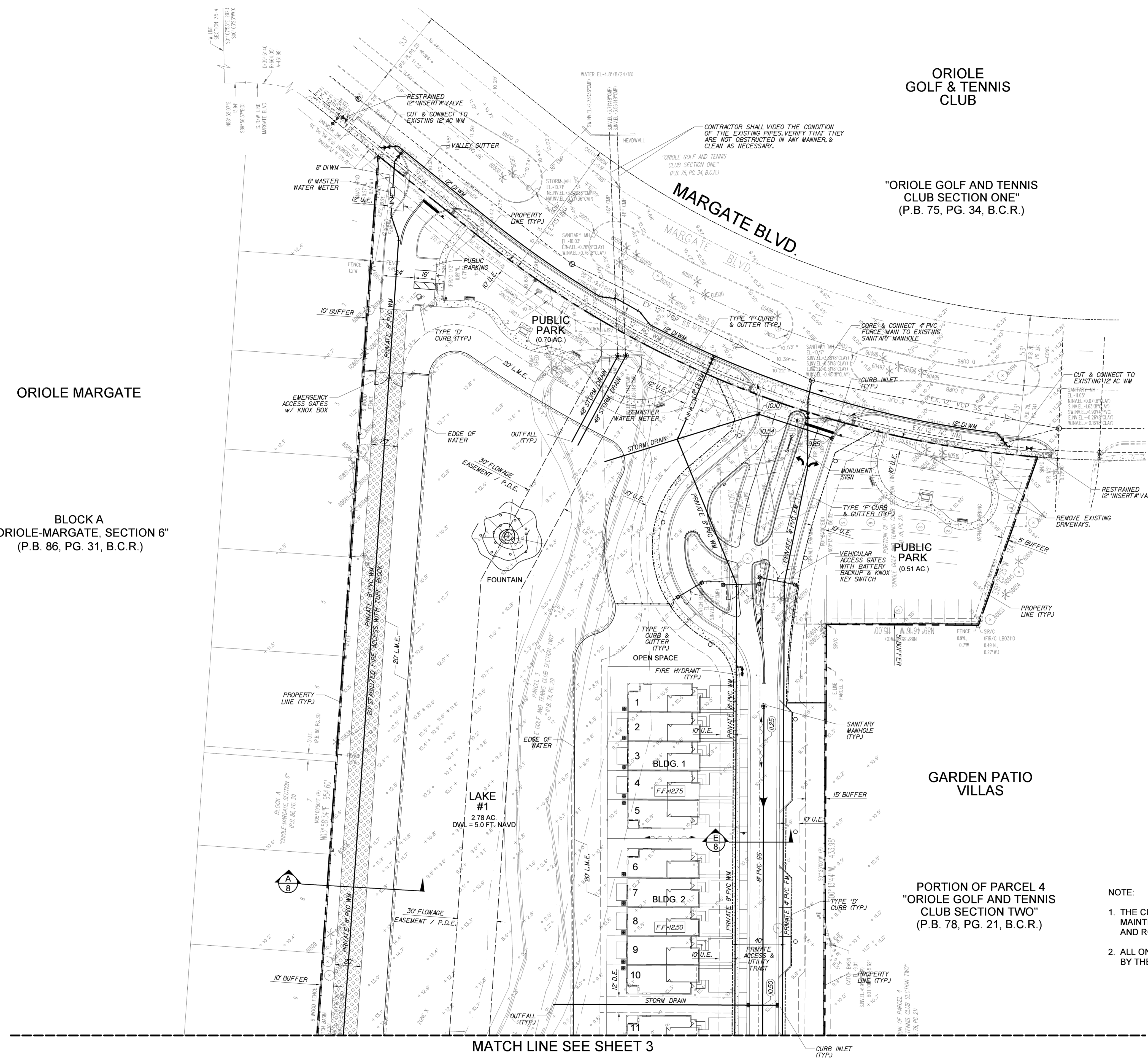
REVISIONS:	DATE	COMMENTS
1	12/23	CITY COMMENTS
2	8/10/23	CITY COMMENTS
3	10/11/23	CITY COMMENTS
4		
5		

TASK:
MASTER PRELIMINARY ENGINEERING PLAN

PROJECT:
NOVE OF MARGATE

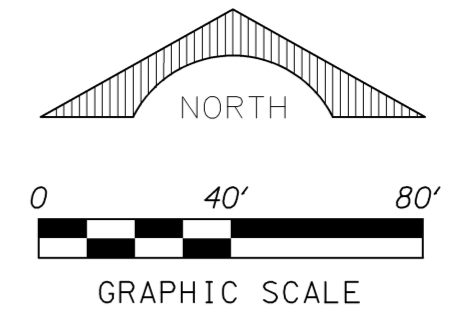
STATE:
FLORIDA

JOB NO.	17180
DRAWN	RAD
DESIGNED	JTS
CHECKED	JWM
Q.C.	JTS



ORIOLE GOLF & TENNIS CLUB

"ORIOLE GOLF AND TENNIS CLUB SECTION ONE" (P.B. 75, PG. 34, B.C.R.)



LEGEND

D.E.	PRIVATE DRAINAGE EASEMENT
P.D.E.	PUBLIC DRAINAGE EASEMENT
R.E.	RIM ELEVATION
G.E.	GRATE ELEVATION
I.E.	INVERT ELEVATION
U.E.	UTILITY EASEMENT
SM	SANITARY SEWER MANHOLE
SL	SEWER LATERAL
SCB	STORM CATCH BASIN
FH	FIRE HYDRANT, GATE VALVE & TEE ASSEMBLY
PGV	PROPOSED GATE VALVE
OF	DIRECTION OF OVERLAND FLOW
X	HIGH POINT
FF+10.00	FINISHED FLOOR ELEVATION
---	EXISTING UTILITIES
---	EXISTING ELEVATION
---	PROPERTY LINE
---	EXISTING INFORMATION
---	PROPOSED INFORMATION
---	NEW CONCRETE SIDEWALK
---	EXISTING CONCRETE
---	PROPOSED OFFSITE ASPHALT
---	PROPOSED CONCRETE PAVERS
O	PROPOSED LIGHT POLE

- NOTE:**
1. THE CITY WILL BE GRANTED AN EASEMENT OVER THE LAKE, CANAL, LAKE MAINTENANCE EASEMENTS (LME), PUBLIC DRAINAGE EASEMENTS (PDE), AND ROADWAY TRACTS.
 2. ALL ONSITE DRAINAGE, WATER, & SEWER WILL BE OWNED & MAINTAINED BY THE HOMEOWNERS ASSOCIATION.

Jeffrey T. Schnars, Professional Engineer, State of Florida, License No. 46697.
 This item has been digitally signed and sealed by Jeffrey T. Schnars, P.E. on 10/11/2023.
 Printed copies of this document are not considered signed and sealed and the signature must be verified on any electronic copies.

ORIGINAL: OCT. 2022

REVISIONS:

1	1/3/23 CITY COMMENTS
2	3/27/23 CITY COMMENTS
3	8/10/23 CITY COMMENTS
4	10/11/23 CITY COMMENTS
5	

TASK:

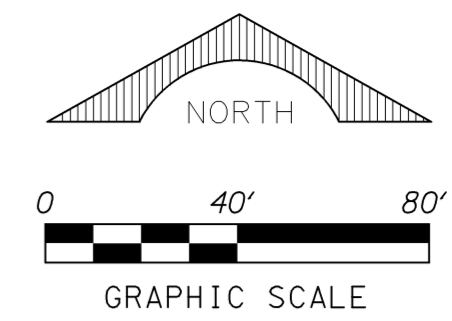
PRELIMINARY ENGINEERING PLAN

PROJECT:

NOVE OF MARGATE
MARGATE
FLORIDA

Jeffrey T. Schnars, P.E.
 Civil Engineer
 Florida Registration No. 46697
 (FOR THE FIRM)

JOB NO.	17180
DRAWN	RAD
DESIGNED	JTS
CHECKED	JWM
Q.C.	JTS



NOTE:

1. THE CITY WILL BE GRANTED AN EASEMENT OVER THE LAKE, CANAL, LAKE MAINTENANCE EASEMENTS (LME), PUBLIC DRAINAGE EASEMENTS (PDE), AND ROADWAY TRACTS.
2. ALL ONSITE DRAINAGE, WATER, & SEWER WILL BE OWNED & MAINTAINED BY THE HOMEOWNERS ASSOCIATION.

**BLOCK A
"ORIOLE-MARGATE, SECTION 6"
(P.B. 86, PG. 31, B.C.R.)**

ORIOLE MARGATE

**GARDEN PATIO
VILLAS**

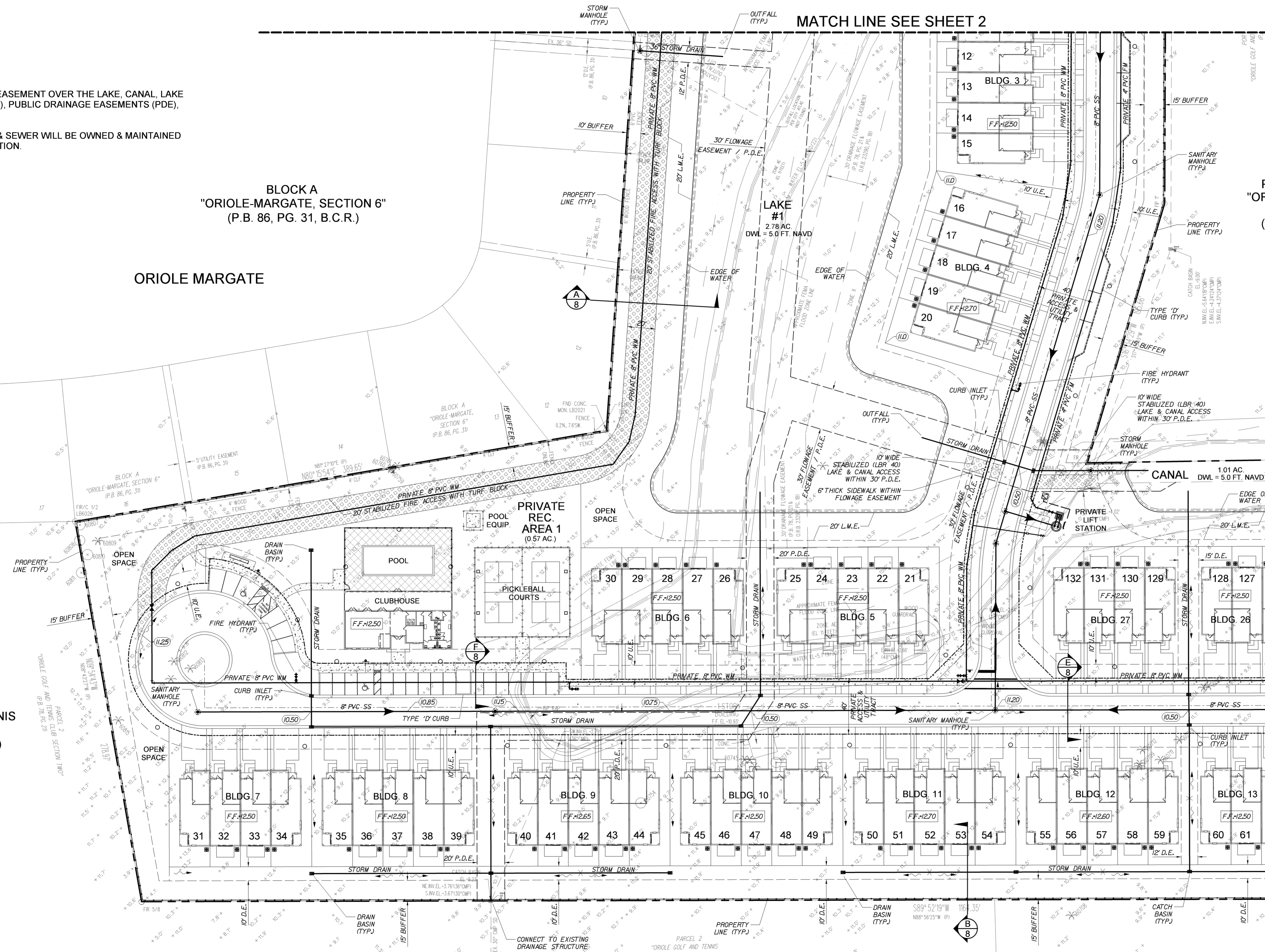
**PORTION OF PARCEL 4
"ORIOLE GOLF AND TENNIS
CLUB SECTION TWO"
(P.B. 78, PG. 21, B.C.R.)**

**PARCEL 2
"ORIOLE GOLF AND TENNIS
CLUB SECTION TWO"
(P.B. 78, PG. 21, B.C.R.)**

**ORIOLE GARDENS
CONDOMINIUM PH 2**

**PARCEL 2
"ORIOLE GOLF AND TENNIS
CLUB SECTION TWO"
(P.B. 78, PG. 21, B.C.R.)**

**PARCEL 6
"ORIOLE GOLF AND TENNIS
CLUB SECTION TWO"
(P.B. 78, PG. 21, B.C.R.)**



LEGEND	
D.E.	PRIVATE DRAINAGE EASEMENT
P.D.E.	PUBLIC DRAINAGE EASEMENT
R.E.	RIM ELEVATION
G.E.	GRATE ELEVATION
I.E.	INVERT ELEVATION
U.E.	UTILITY EASEMENT
SM	SANITARY SEWER MANHOLE
SL	SEWER LATERAL
SCB	STORM CATCH BASIN
FHV	FIRE HYDRANT, GATE VALVE & TEE ASSEMBLY
PGV	PROPOSED GATE VALVE
DF	DIRECTION OF OVERLAND FLOW
X	HIGH POINT
FF-10.00	FINISHED FLOOR ELEVATION
---	EXISTING UTILITIES
---	EXISTING ELEVATION
---	PROPERTY LINE
---	EXISTING INFORMATION
---	PROPOSED INFORMATION
---	NEW CONCRETE SIDEWALK
---	EXISTING CONCRETE
---	PROPOSED OFFSITE ASPHALT
---	PROPOSED CONCRETE PAVERS
○	PROPOSED LIGHT POLE

Jeffrey T. Schnars, Professional Engineer, State of Florida, License No. 46697.
This item has been digitally signed and sealed by Jeffrey T. Schnars, P.E. on 10/11/2023.
Printed copies of this document are not considered signed and sealed and the signature must be verified on any electronic copies.

SCHNARS
ENGINEERING CORPORATION
947 CLINT MOORE ROAD
BOCA RATON, FLORIDA 33487
TEL: (561) 241-1645
FAX: (561) 241-1582

ORIGINAL:	OCT. 2022
REVISIONS:	1 12/23 CITY COMMENTS
	2 3/27/23 CITY COMMENTS
	3 8/4/23 CITY COMMENTS
	4 10/11/23 CITY COMMENTS
	5

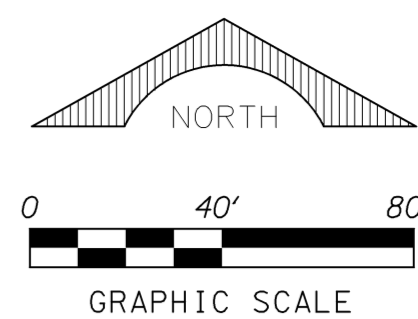
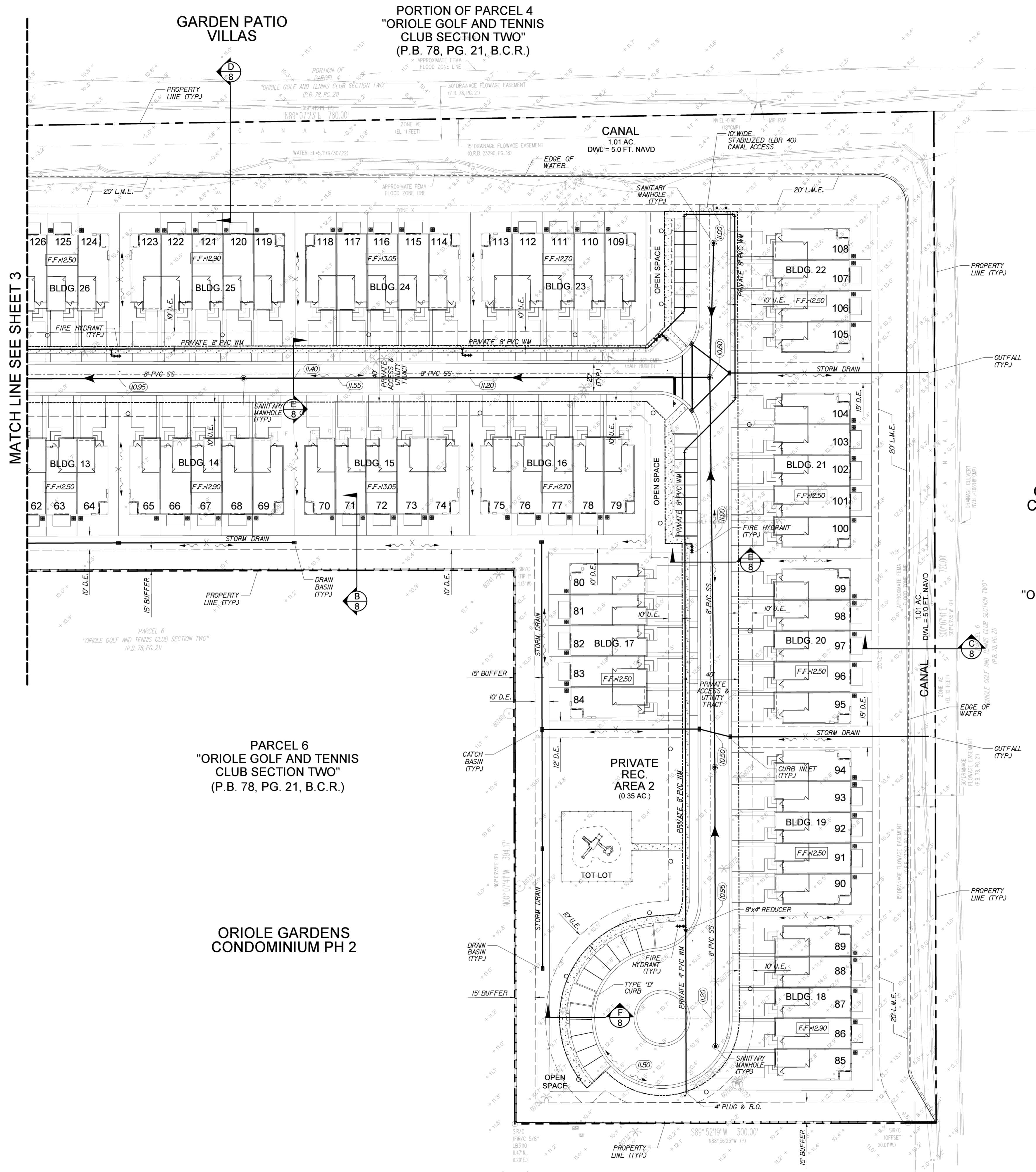
TASK: **PRELIMINARY ENGINEERING PLAN**

PROJECT: **NOVE OF MARGATE**
MARGATE
FLORIDA

SEAL

Jeffrey T. Schnars, P.E.
Civil Engineer
Florida Registration No. 46697
(FOR THE FIRM)

JOB NO. 17180
DRAWN RAD
DESIGNED JTS
CHECKED JWM
Q.C. JTS



ORIOLE GARDENS
CONDOMINIUM PH 2

PARCEL 6
"ORIOLE GOLF AND TENNIS
CLUB SECTION TWO"
(P.B. 78, PG. 21, B.C.R.)

LEGEND	
D.E.	PRIVATE DRAINAGE EASEMENT
P.D.E.	PUBLIC DRAINAGE EASEMENT
R.E.	RIM ELEVATION
G.E.	GRATE ELEVATION
I.E.	INVERT ELEVATION
U.E.	UTILITY EASEMENT
	SANITARY SEWER MANHOLE
	SEWER LATERAL
	STORM CATCH BASIN
	FIRE HYDRANT GATE VALVE & TEE ASSEMBLY
	PROPOSED GATE VALVE
	DIRECTION OF OVERLAND FLOW
	HIGH POINT
FF-10.00	FINISHED FLOOR ELEVATION
	EXISTING UTILITIES
	EXISTING ELEVATION
	PROPERTY LINE
	EXISTING INFORMATION
	PROPOSED INFORMATION
	NEW CONCRETE SIDEWALK
	EXISTING CONCRETE
	PROPOSED OFFSITE ASPHALT
	PROPOSED CONCRETE PAVERS
	PROPOSED LIGHT POLE

- NOTE:
1. THE CITY WILL BE GRANTED AN EASEMENT OVER THE LAKE, CANAL, LAKE MAINTENANCE EASEMENTS (LME), PUBLIC DRAINAGE EASEMENTS (PDE), AND ROADWAY TRACTS.
 2. ALL ONSITE DRAINAGE, WATER, & SEWER WILL BE OWNED & MAINTAINED BY THE HOMEOWNERS ASSOCIATION.

Jeffrey T. Schnars, Professional Engineer, State of Florida, License No. 46697.
This item has been digitally signed and sealed by Jeffrey T. Schnars, P.E. on 10/11/2023.
Printed copies of this document are not considered signed and sealed and the signature must be verified on any electronic copies.

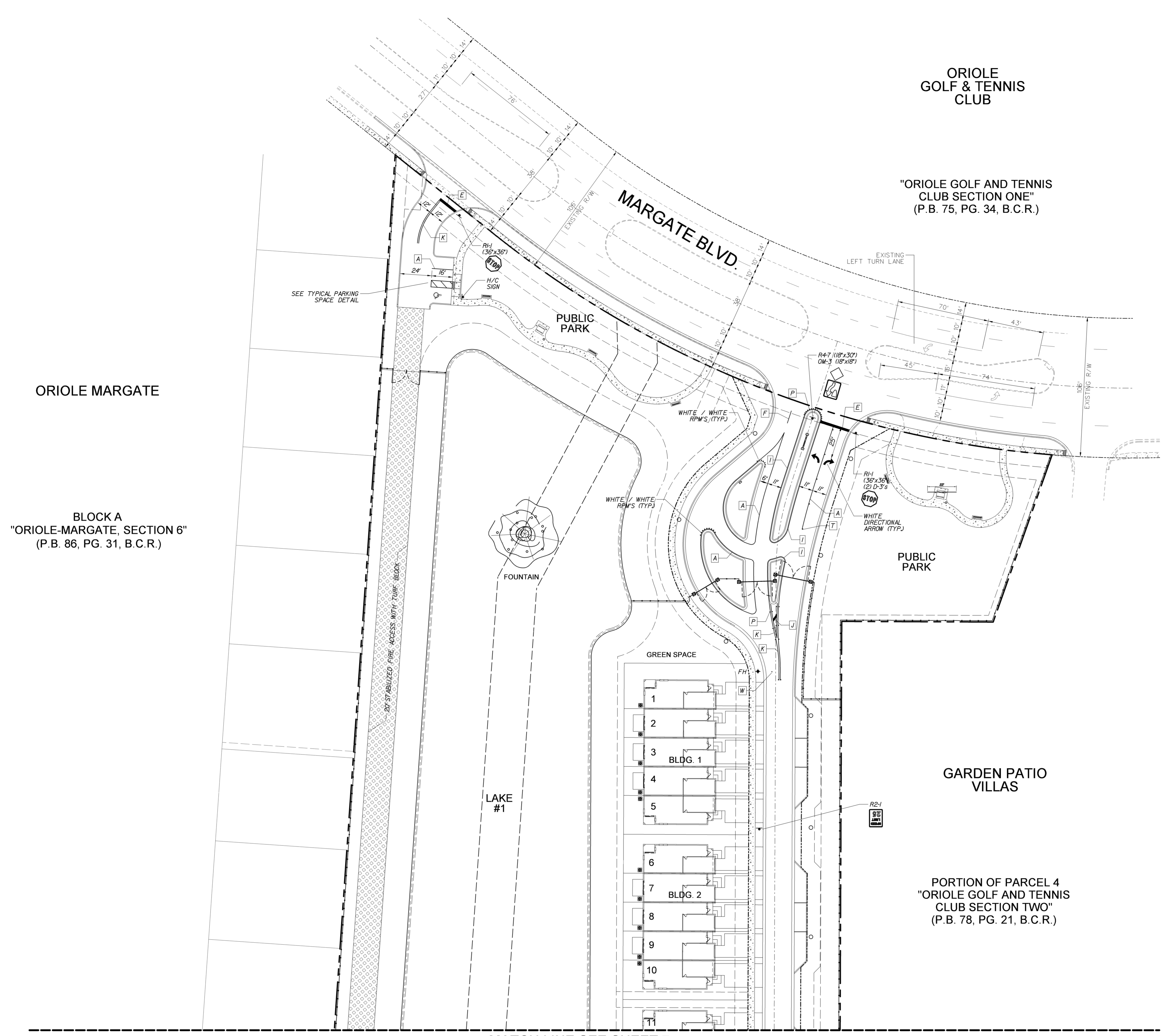
SCHNARS
ENGINEERING CORPORATION
947 CLINT MOORE ROAD
BOCA RATON, FLORIDA 33487
TEL: (561) 241-1645
FAX: (561) 241-1512

ORIGINAL:	OCT. 2022
REVISIONS:	
1	12/23 CITY COMMENTS
2	8/4/23 CITY COMMENTS
3	10/12/23 CITY COMMENTS
4	
5	

TASK:	PRELIMINARY ENGINEERING PLAN
-------	------------------------------

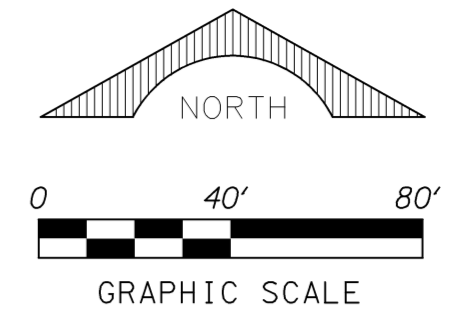
PROJECT:	NOVE OF MARGATE	FLORIDA
	MARGATE	

JOB NO.	17180
DRAWN	RAD
DESIGNED	JTS
CHECKED	JWM
Q.C.	JTS
SHEET C4 OF 11	



ORIOLE
GOLF & TENNIS
CLUB

"ORIOLE GOLF AND TENNIS
CLUB SECTION ONE"
(P.B. 75, PG. 34, B.C.R.)



STRIPING KEY

- A - 6" SOLID WHITE
- B - 8" SOLID WHITE
- C - 12" SOLID WHITE
- D - 18" SOLID WHITE
- E - 24" SOLID WHITE
- F - 6" SKIP WHITE TYP (10'-30')
- G - 6" SKIP WHITE TYP (6'-10')
- H - 6" SKIP WHITE TYP (2'-4')
- I - 6" SOLID YELLOW
- J - 18" SOLID YELLOW
- K - 6" DOUBLE YELLOW
- L - 6" SKIP YELLOW TYP (10'-30')
- M - 6" SKIP YELLOW TYP (6'-10')
- N - 6" SKIP YELLOW TYP (2'-4')
- P - RPM BI-DIRECTIONAL AMBER/AMBER
- R - FDP WHITE
- S - FDP YELLOW
- T - RPM BI-DIRECTIONAL WHITE/RED
- U - RPM BI-DIRECTIONAL RED/YELLOW
- W - RPM BI-DIRECTIONAL BLUE/BLUE
- X - 6" DOUBLE WHITE
- Y - 6" SKIP DOUBLE WHITE TYP (2'-4')

ORIOLE MARGATE

BLOCK A
"ORIOLE-MARGATE, SECTION 6"
(P.B. 86, PG. 31, B.C.R.)

MATCH LINE SEE SHEET 7

Jeffrey T. Schnars, Professional Engineer, State of Florida, License No. 46697.
This item has been digitally signed and sealed by Jeffrey T. Schnars, P.E. on 10/11/2023.
Printed copies of this document are not considered signed and sealed and the signature must be verified on any electronic copies.

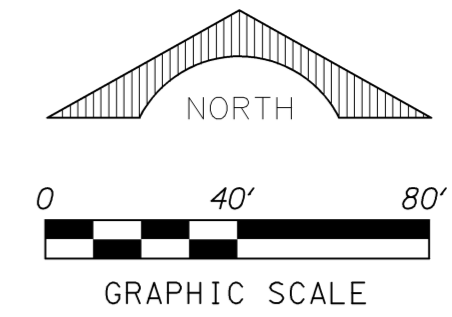
ORIGINAL: OCT. 2022

REVISIONS:	DATE	CITY COMMENTS
1	1/3/23	CITY COMMENTS
2	2/27/23	CITY COMMENTS
3	2/27/23	CITY COMMENTS
4	10/11/23	CITY COMMENTS
5		

PROJECT:	NOVE OF MARGATE	FLORIDA
TASK:	PAVEMENT MARKING & SIGNAGE PLAN	
MARGATE		

Jeffrey T. Schnars, P.E.
Civil Engineer
Florida Registration No. 46697
(FOR THE FIRM)

JOB NO.	17180
DRAWN	RAD
DESIGNED	JTS
CHECKED	JWM
Q.C.	JTS



MATCH LINE SEE SHEET 6

BLOCK A
"ORIOLE-MARGATE, SECTION 6"
(P.B. 86, PG. 31, B.C.R.)

GARDEN PATIO
VILLAS

PORTION OF PARCEL 4
"ORIOLE GOLF AND TENNIS
CLUB SECTION TWO"
(P.B. 78, PG. 21, B.C.R.)

ORIOLE MARGATE

LAKE #1

CANAL

STRIPING KEY

- A - 6" SOLID WHITE
- B - 8" SOLID WHITE
- C - 12" SOLID WHITE
- D - 18" SOLID WHITE
- E - 24" SOLID WHITE
- F - 6" SKIP WHITE TYP (10'-30')
- G - 6" SKIP WHITE TYP (6'-10')
- H - 6" SKIP WHITE TYP (2'-4')
- I - 6" SOLID YELLOW
- J - 18" SOLID YELLOW
- K - 6" DOUBLE YELLOW
- L - 6" SKIP YELLOW TYP (10'-30')
- M - 6" SKIP YELLOW TYP (6'-10')
- N - 6" SKIP YELLOW TYP (2'-4')
- P - RPM BI-DIRECTIONAL AMBER/AMBER
- R - FDP WHITE
- S - FDP YELLOW
- T - RPM BI-DIRECTIONAL WHITE/RED
- U - RPM BI-DIRECTIONAL RED/YELLOW
- W - RPM BI-DIRECTIONAL BLUE/BLUE
- X - 6" DOUBLE WHITE
- Y - 6" SKIP DOUBLE WHITE TYP (2'-4')

PRIVATE
REC.
AREA 1
(0.57 AC)

PRIVATE
LIFT
STATION

PARCEL 2
"ORIOLE GOLF AND TENNIS
CLUB SECTION TWO"
(P.B. 78, PG. 21, B.C.R.)

ORIOLE GARDENS
CONDOMINIUM PH 2

PARCEL 2
"ORIOLE GOLF AND TENNIS
CLUB SECTION TWO"
(P.B. 78, PG. 21, B.C.R.)

PARCEL 6
"ORIOLE GOLF AND TENNIS
CLUB SECTION TWO"
(P.B. 78, PG. 21, B.C.R.)

MATCH LINE SEE SHEET 8

Jeffrey T. Schnars, Professional Engineer, State of Florida, License No. 46697.
This item has been digitally signed and sealed by Jeffrey T. Schnars, P.E. on 10/11/2023.
Printed copies of this document are not considered signed and sealed and the signature must be verified on any electronic copies.

ORIGINAL: OCT. 2022

REVISIONS:

1	12/23 CITY COMMENTS
2	8/4/23 CITY COMMENTS
3	10/11/23 CITY COMMENTS
4	
5	

TASK:

PAVEMENT MARKING & SIGNAGE PLAN

PROJECT:

NOVE OF MARGATE
MARGATE

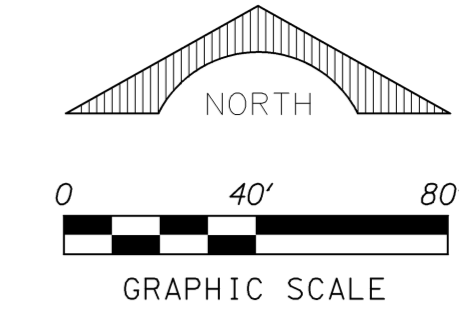
FLORIDA

Jeffrey T. Schnars, P.E.
Civil Engineer
Florida Registration No. 46697
(FOR THE FIRM)

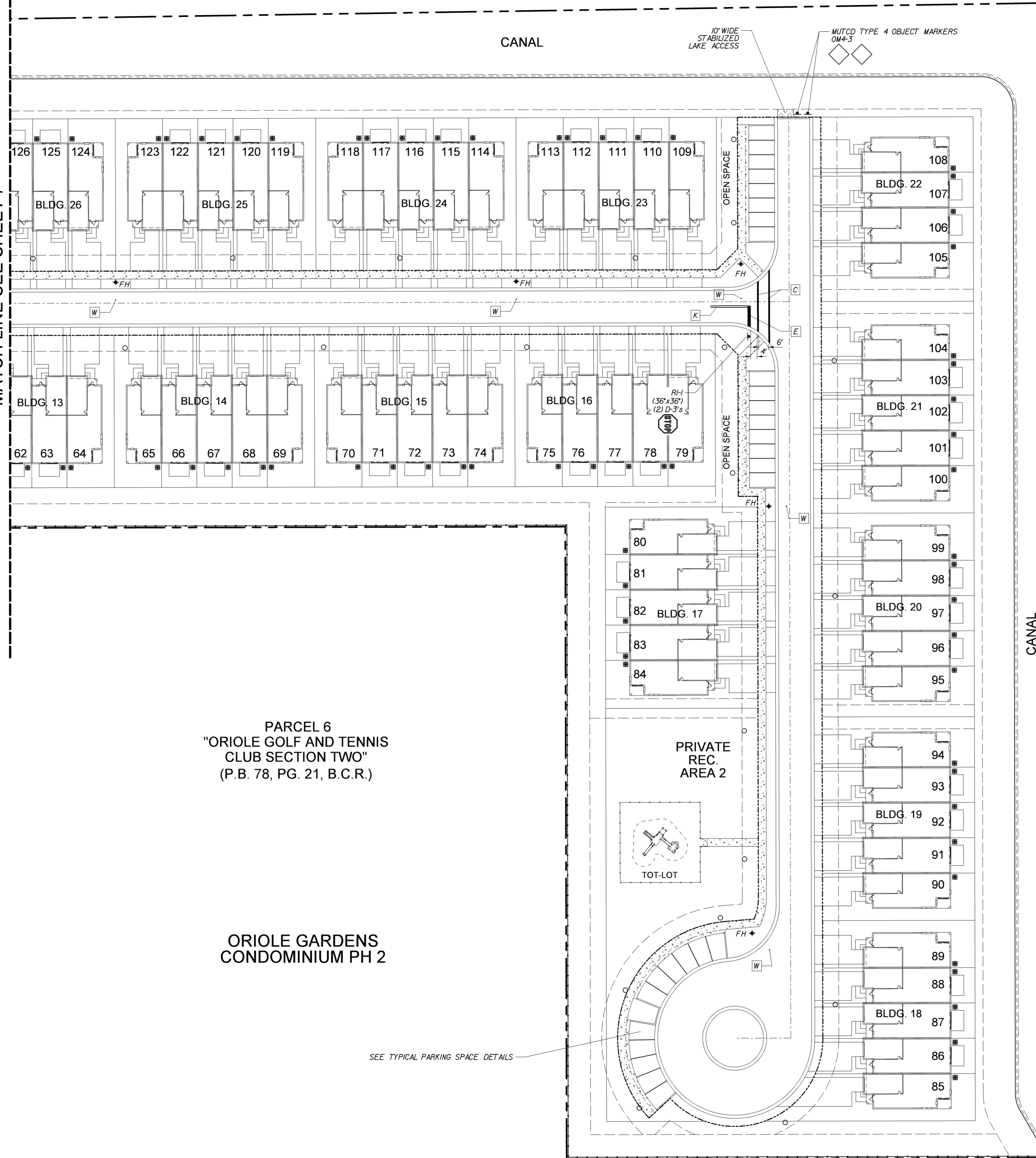
JOB NO.	17180
DRAWN	RAD
DESIGNED	JTS
CHECKED	JWM
Q.C.	JTS

GARDEN PATIO VILLAS

PORTION OF PARCEL 4
"ORIOLE GOLF AND TENNIS CLUB SECTION TWO"
(P.B. 78, PG. 21, B.C.R.)



MATCH LINE SEE SHEET 7



STRIPING KEY

- A - 6" SOLID WHITE
- B - 8" SOLID WHITE
- C - 12" SOLID WHITE
- D - 18" SOLID WHITE
- E - 24" SOLID WHITE
- F - 6" SKIP WHITE TYP (10'- 30')
- G - 6" SKIP WHITE TYP (6'- 10')
- H - 6" SKIP WHITE TYP (2'- 4')
- I - 6" SOLID YELLOW
- J - 18" SOLID YELLOW
- K - 6" DOUBLE YELLOW
- L - 6" SKIP YELLOW TYP (10'- 30')
- M - 6" SKIP YELLOW TYP (6'- 10')
- N - 6" SKIP YELLOW TYP (2'- 4')
- P - RPM BI-DIRECTIONAL AMBER/AMBER
- R - FDP WHITE
- S - FDP YELLOW
- T - RPM BI-DIRECTIONAL WHITE/RED
- U - RPM BI-DIRECTIONAL RED/YELLOW
- W - RPM BI-DIRECTIONAL BLUE/BLUE
- X - 6" DOUBLE WHITE
- Y - 6" SKIP DOUBLE WHITE TYP (2'-4')

ORIOLE GARDENS CONDOMINIUM PH 2

PARCEL 6
"ORIOLE GOLF AND TENNIS CLUB SECTION TWO"
(P.B. 78, PG. 21, B.C.R.)

PARCEL 6
"ORIOLE GOLF AND TENNIS CLUB SECTION TWO"
(P.B. 78, PG. 21, B.C.R.)

ORIOLE GARDENS CONDOMINIUM PH 2

Jeffrey T. Schnars, Professional Engineer, State of Florida, License No. 46697.
This item has been digitally signed and sealed by Jeffrey T. Schnars, P.E. on 10/11/2023.
Printed copies of this document are not considered signed and sealed and the signature must be verified on any electronic copies.

SCHNARS
ENGINEERING CORPORATION
947 CLINT MOORE ROAD
BOCA RATON, FLORIDA 33487
TEL: (561) 241-1645
FAX: (561) 241-1512

ORIGINAL: OCT. 2022

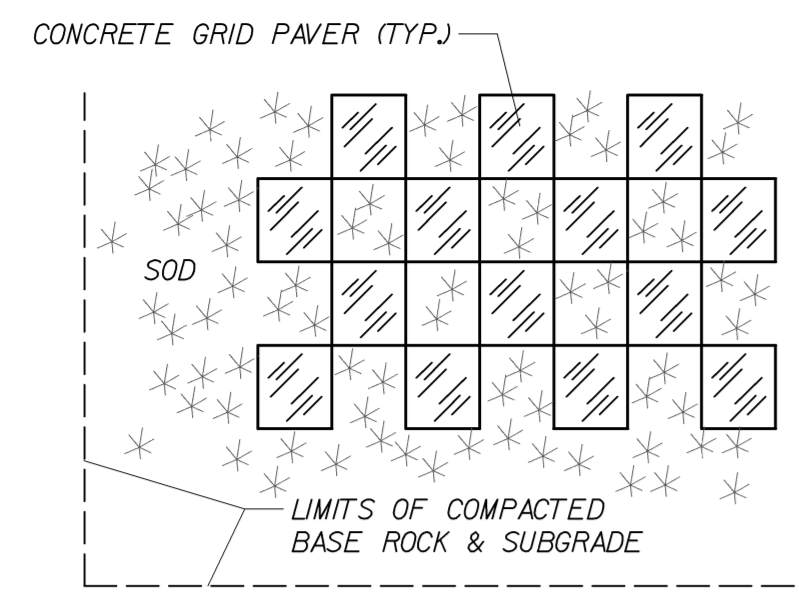
REVISIONS:	COMMENTS
1	12/23 CITY COMMENTS
2	8/4/23 CITY COMMENTS
3	10/11/23 CITY COMMENTS
4	
5	

PROJECT:	NOVE OF MARGATE
TASK:	PAVEMENT MARKING & SIGNAGE PLAN

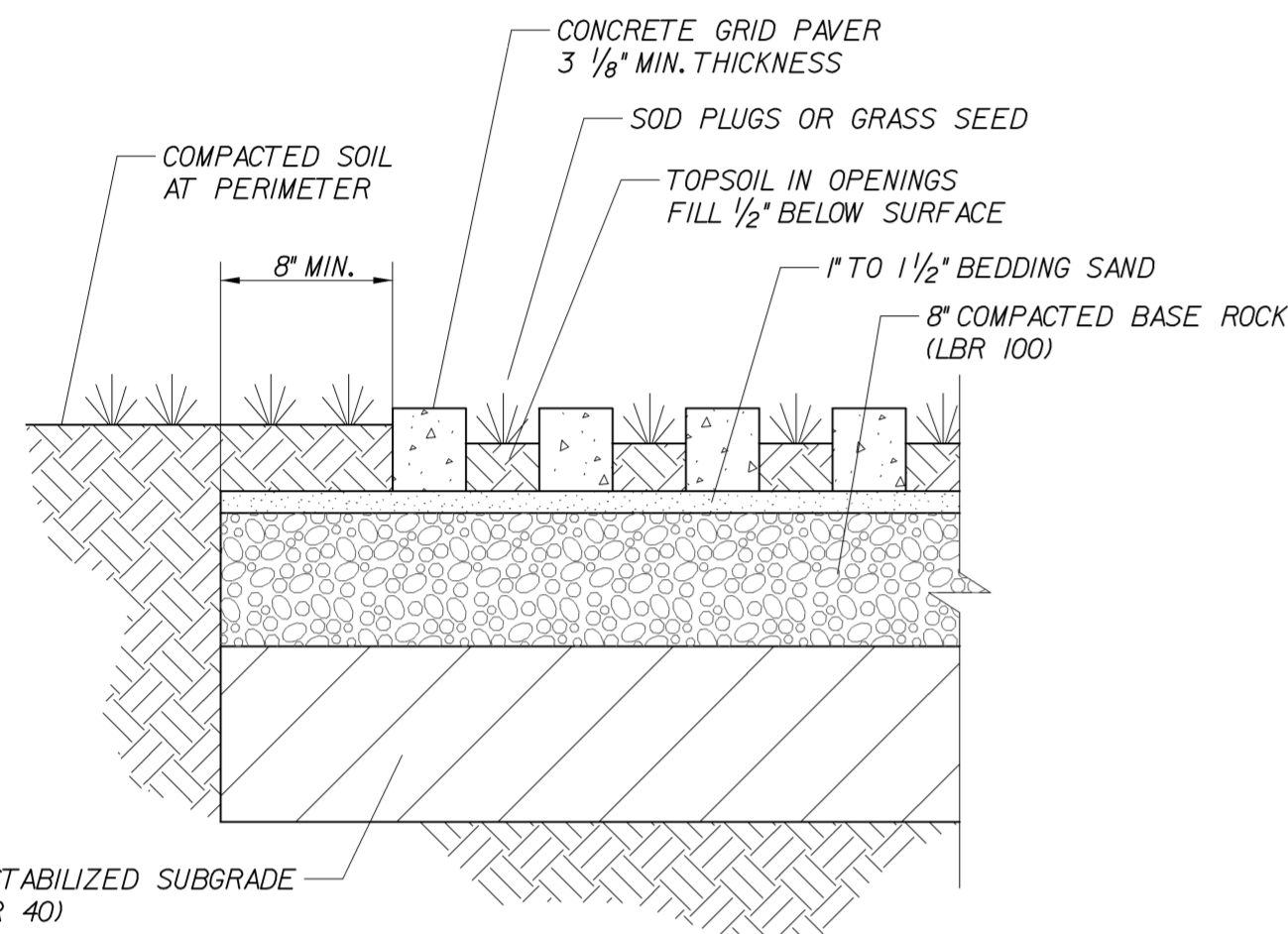
PROJECT:	MARGATE
STATE:	FLORIDA

Jeffrey T. Schnars, P.E.
Civil Engineer
Florida Registration No. 46697
(FOR THE FIRM)

JOB NO.	17180
DRAWN	RAD
DESIGNED	JTS
CHECKED	JWM
Q.C.	JTS



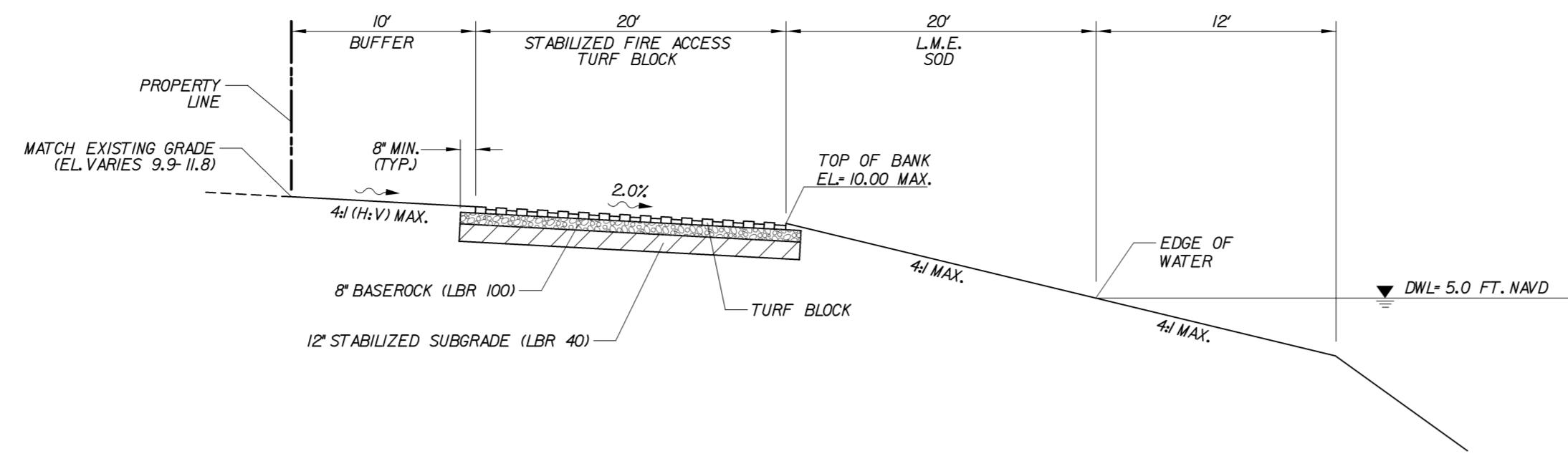
PLAN



SECTION

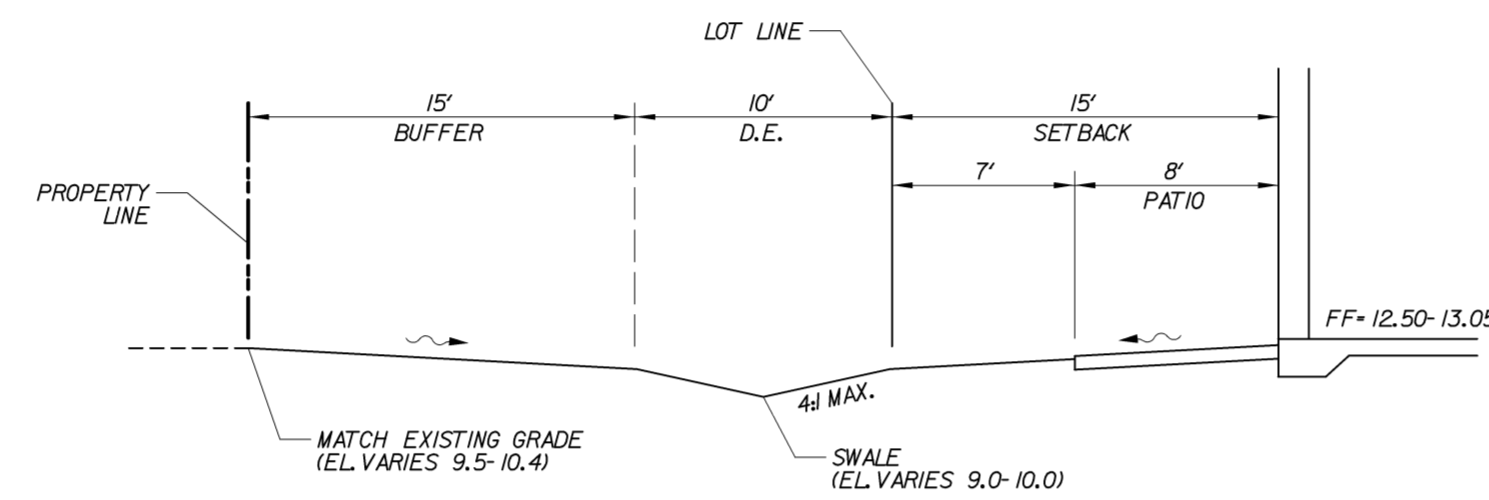
CONCRETE GRID PAVER FIRELANE

N. T. S.



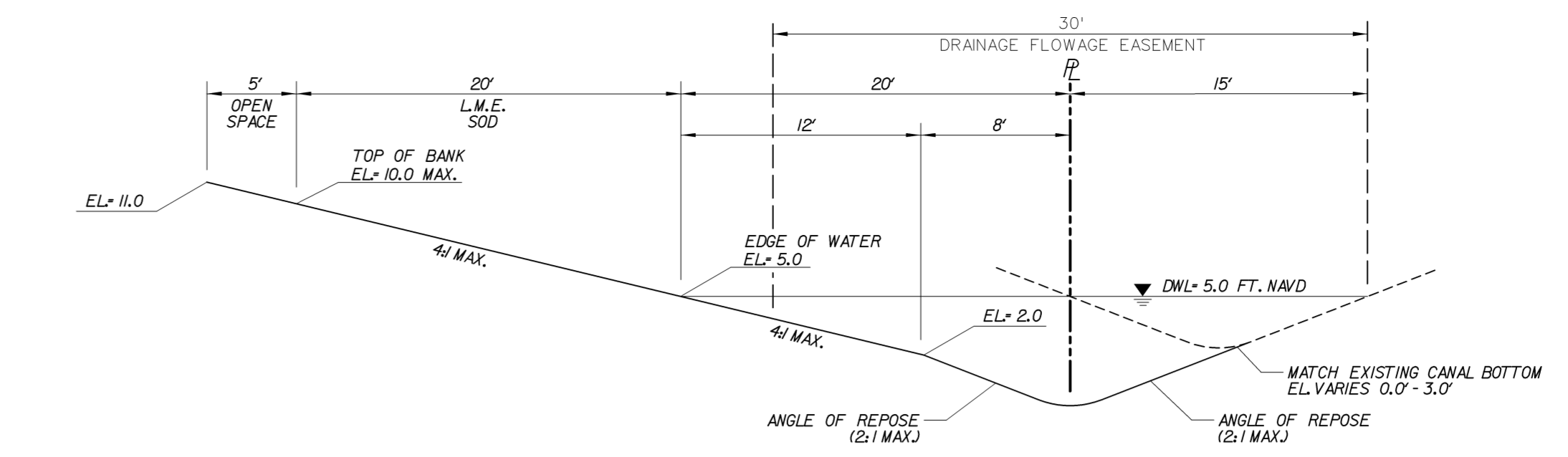
SECTION "A"

N.T.S.



SECTION "B"

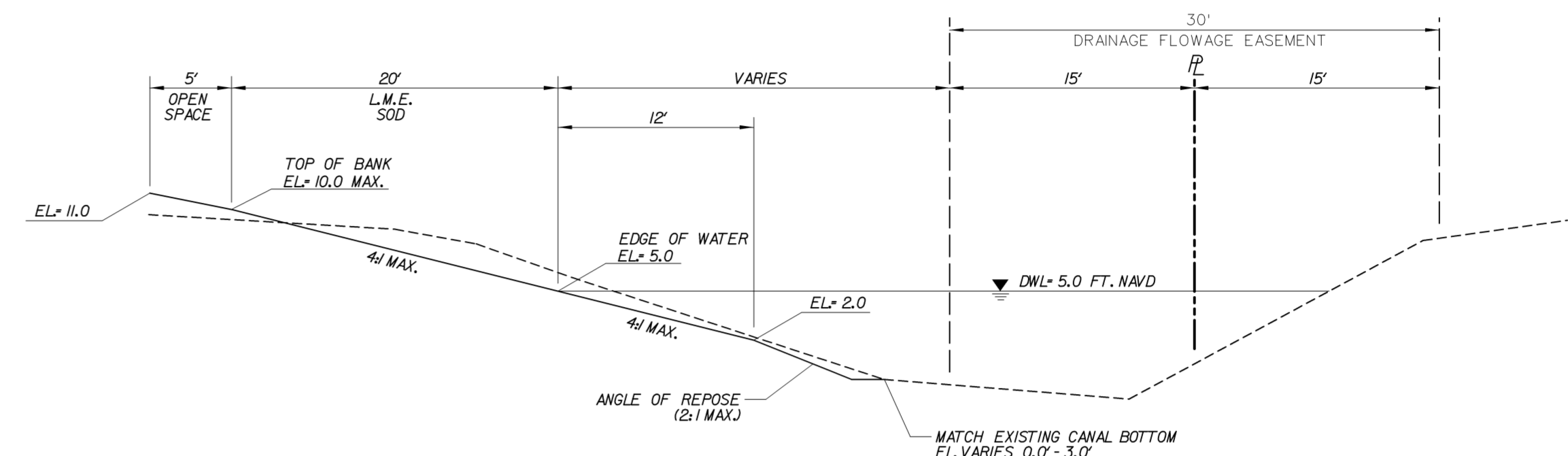
N.T.S.



SECTION "C"

EAST PROPERTY LINE CANAL

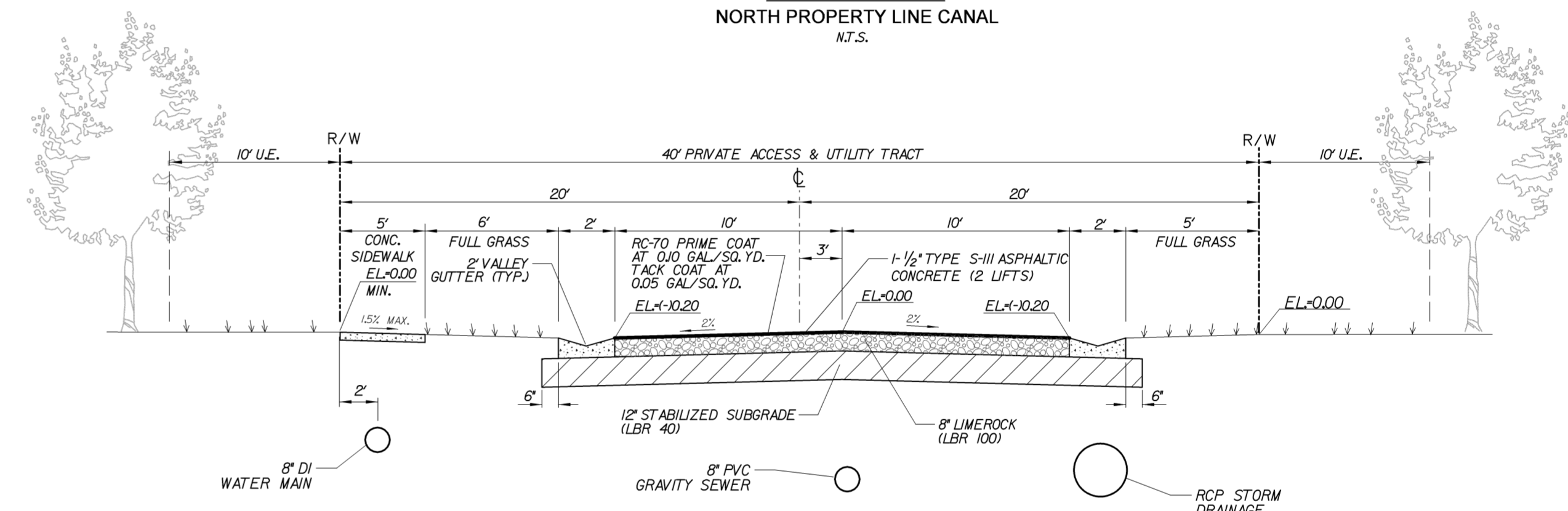
N.T.S.



SECTION "D"

NORTH PROPERTY LINE CANAL

N.T.S.



SECTION "E"

40' ROAD TRACT

N. T. S.

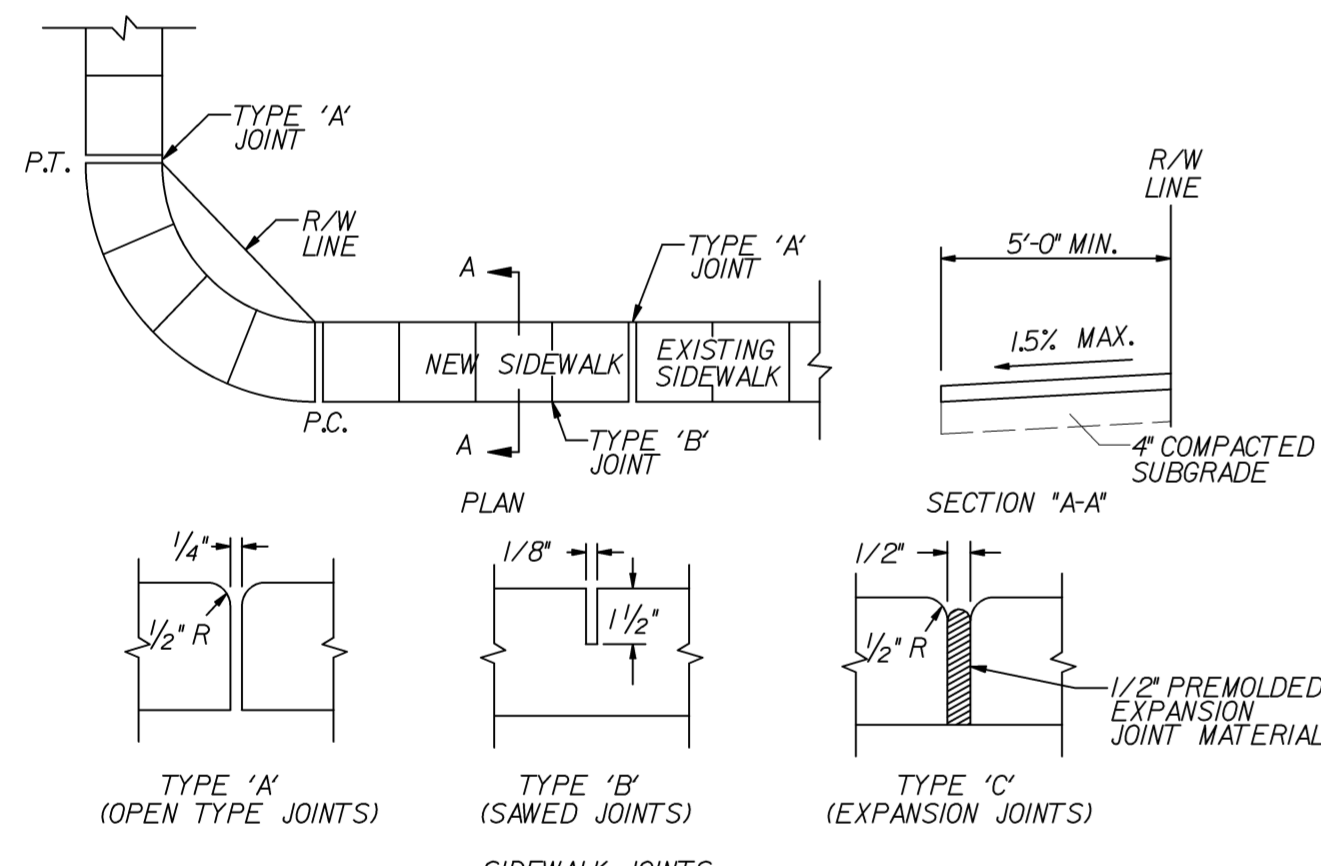


TABLE OF SIDEWALK JOINTS

LOCATION	THICKNESS - T'
RESIDENTIAL AREAS & CART PATHS AT DRIVEWAYS AND OTHER AREAS	4"
	6"

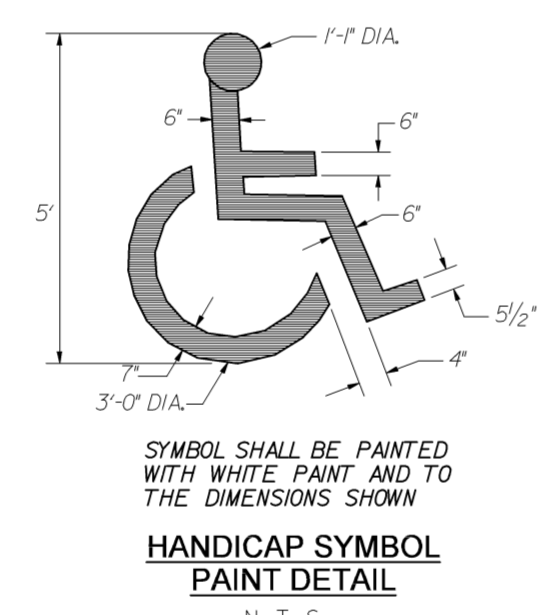
TYPE	LOCATION
'A'	P.C. AND P.T. OF CURVES, JUNCTION OF EXISTING AND NEW SIDEWALKS
'B'	5'-0" CENTER TO CENTER ON SIDEWALKS
'C'	*WHERE SIDEWALK ABUTS CONCRETE CURBS, DRIVEWAYS, AND SIMILAR STRUCTURES

* AT THE DISCRETION OF THE ENGINEER

- NOTES:
- SUBGRADE TO BE A MINIMUM 4" OF CLEAN SAND OR SANDY LOAM COMPACTED TO 95% DENSITY AASHTO T-99.
 - SIDEWALKS TO BE PORTLAND CEMENT CONCRETE, MIN. 2500 PSI @ 28 DAYS.
 - AT DRIVEWAY LOCATIONS, SIDEWALKS SHALL BE 6" THICK AND SHALL INCLUDE 6X6 W/4X4 WELDED WIDE MESH WITH 2" OR LOWER FROM THE BOTTOM AND END.
 - SIDEWALK SLOPES SHALL MEET THE REQUIREMENTS OF THE AMERICANS DISABILITIES ACT. SIDEWALKS SHALL HAVE A MAXIMUM TRANSVERSE SLOPE OF 0.02 FEET PER FOOT AND A MINIMUM TRANSVERSE SLOPE OF 0.01 FEET PER FOOT TOWARD THE SWALE OR GUTTER AND SHALL BE GIVEN A TRANSVERSE HAIR-BROOM FINISH.
 - RAMPS SHALL BE PROVIDED AT ALL INTERSECTIONS IN ACCORDANCE WITH FDOT INDEX 522-002.

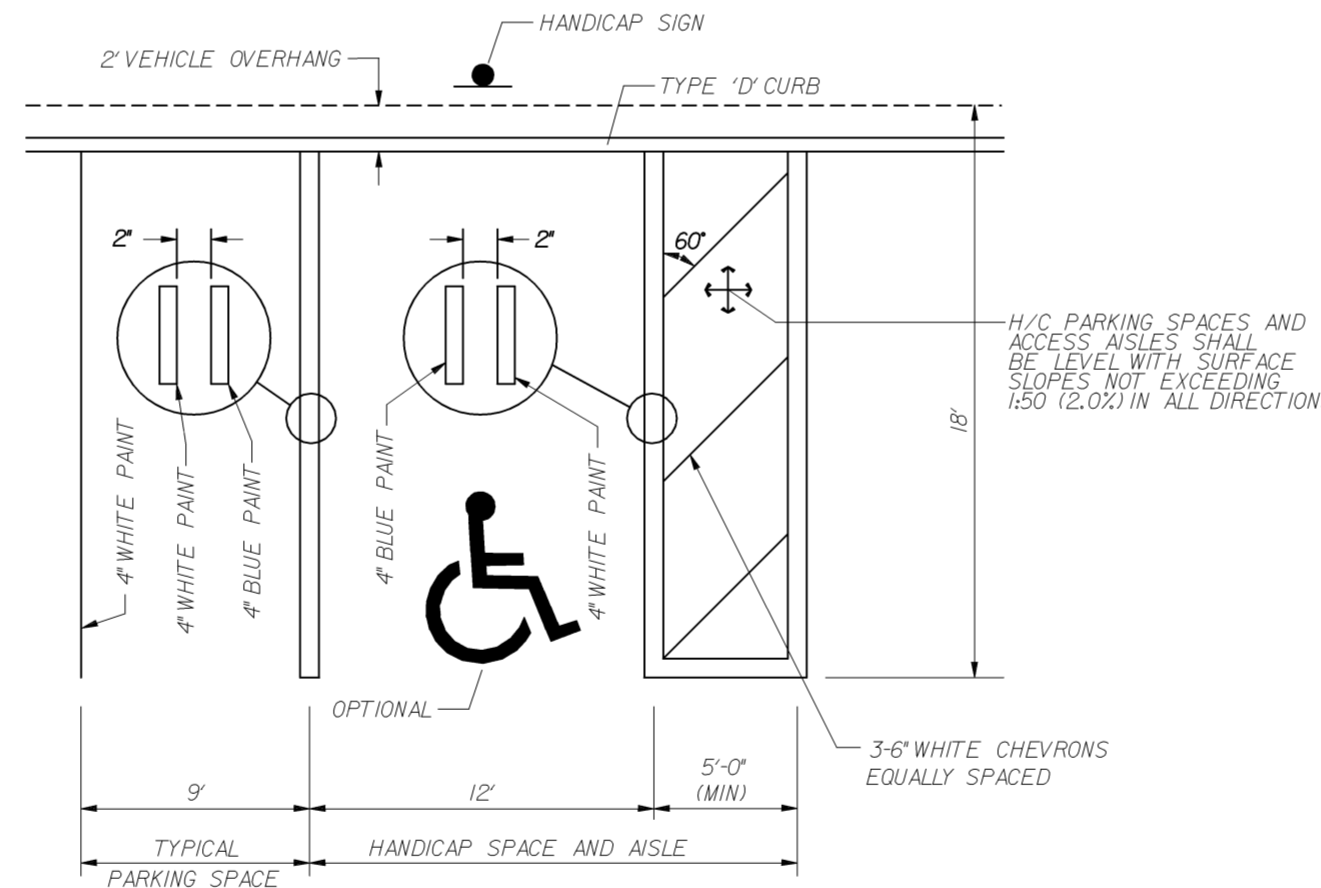
SIDEWALK DETAIL

N. T. S.



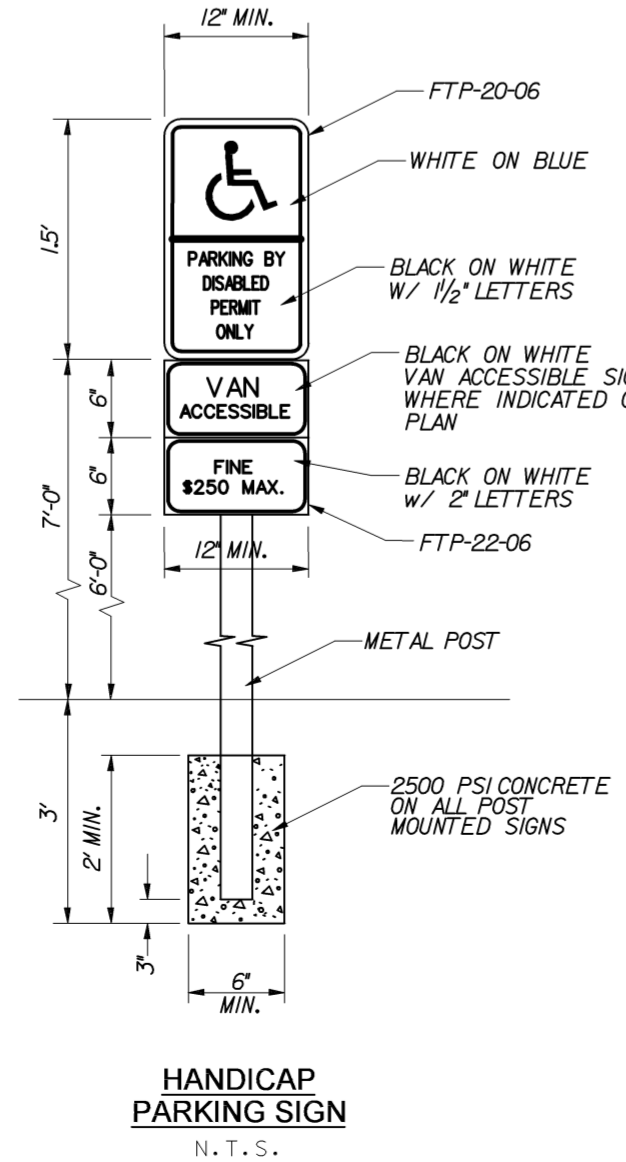
HANDICAP SYMBOL PAINT DETAIL

N. T. S.



TYPICAL PARKING DETAILS

N. T. S.

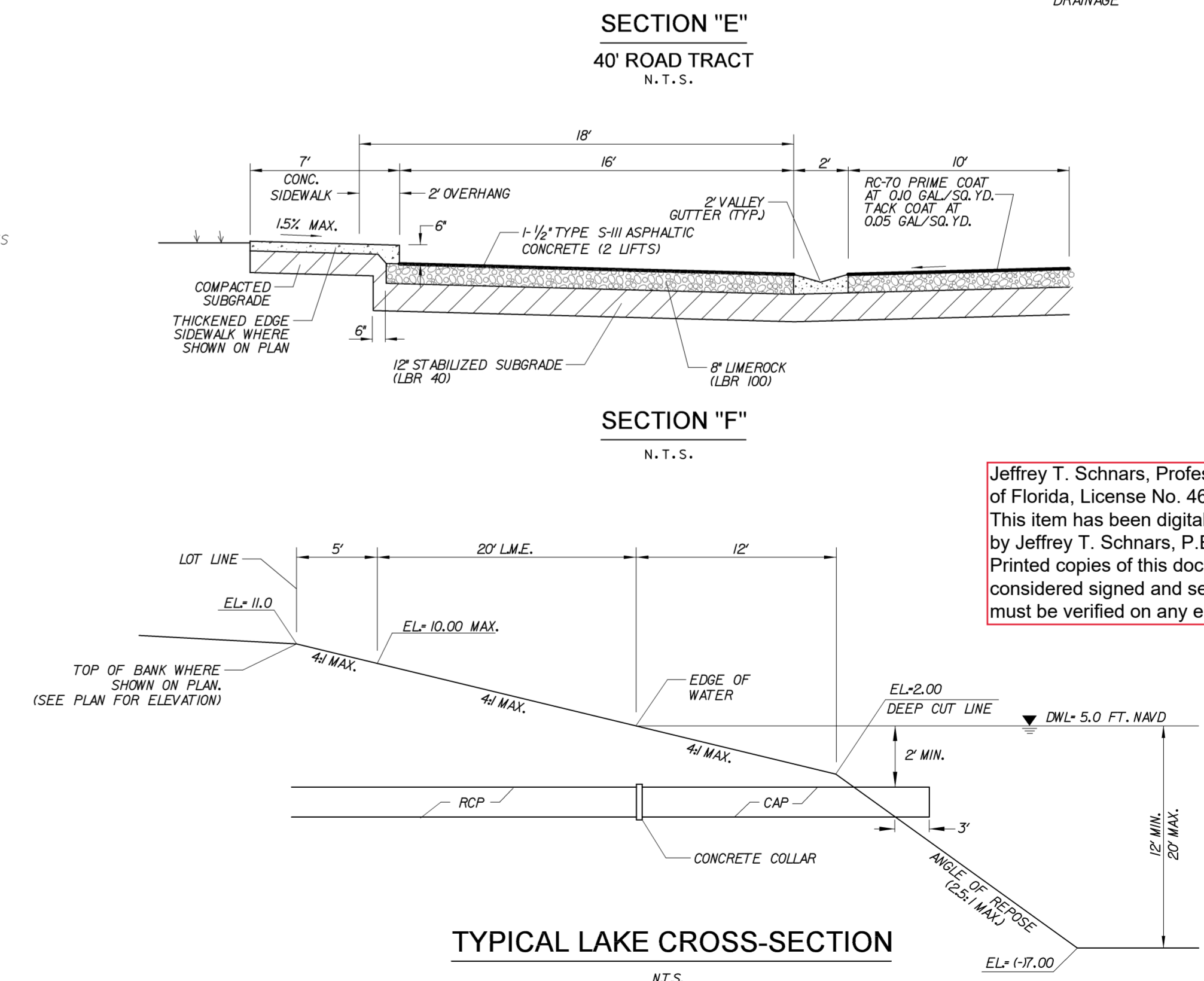


HANDICAP PARKING SIGN

N. T. S.

TYPICAL PARKING SPACE

N. T. S.



TYPICAL LAKE CROSS-SECTION

N.T.S.

NOTE:
ALL ELEVATIONS ARE BASED UPON THE NORTH AMERICAN VERTICAL DATUM (NAVD) OF 1988.

FOR SIGN ASSEMBLIES WITH MAXIMUM 8.75 SQUARE FOOT PANEL AREA

FOR SIGN ASSEMBLIES WITH GREATER THAN 8.75 SQUARE FOOT PANEL AREA WITH SUPPLEMENTAL SIGN

Typical Details

STREET ID (D3-1) MATERIALS:
LETTERS
 WHITE TYPE XI SHEETING
 LETTERING OF STREET NAME SIGNS SHALL BE COMPOSED OF A COMBINATION OF LOWERCASE LETTERS WITH INITIAL UPPERCASE LETTERS
BORDER
 BORDER WIDTHS WILL VARY BASED ON LETTER HEIGHTS
LETTER HEIGHTS - BORDER WIDTHS
 4 INCH LETTER = 0.375 INCH BORDER WIDTH
 6 INCH LETTER = 0.500 INCH BORDER WIDTH
 8 INCH LETTER = 0.750 INCH BORDER WIDTH
GREEN BACKGROUND
 GREEN TRANSLUCENT INK SILK-SCREENED CLEAR-COATED OR ELECTRO-CUT (EC) FILM OR EQUIVALENT
LETTER SIZES
 SEE MUTCD TABLE 2D-2 (PG 169) FOR MINIMUM LETTER HEIGHTS
 LENGTH VARIES BY STREET NAME
HARDWARE
 BOLTS - #18 HEX HEAD STAINLESS STEEL 5/16" x 3"
 NUTS - 5/16" STAINLESS STEEL W/ NYLON WASHERS.
REGULATORY SIGN
 WHEN NO STREET ID IS PRESENT THE STOP SIGN SHALL BE MOUNTED FLUSH TO THE TOP OF THE POST WHILE MAINTAINING 7 FEET MIN. CLEARANCE BETWEEN BOTTOM OF SIGN AND GROUND LEVEL. ANY SIGN INSTALLED BACK TO BACK WITH THE STOP SIGN SHALL BE SMALLER THAN THE STOP SIGN.
STOP, DO NOT ENTER OR YIELD
 WHITE TYPE XI SHEETING
 PRESSURE SENSITIVE RED TRANSLUCENT INK SILK-SCREENED CLEAR-COATED OR ELECTRO-CUT (EC) FILM OR EQUIVALENT.
HARDWARE
 FRONT: #18 HEX HEAD STAINLESS STEEL 5/16" x 3" BOLT W/ 3/8" NYLON WASHER
 BACK: #18 HEX HEAD STAINLESS STEEL NUT W/ 3/8" STAINLESS STEEL WASHER.
NOTES:
 1. ALL TYPE XI SHEETING UTILIZED MUST BE ON THE FOOT APL LIST.
 2. SEE BOTTED TECHNICAL POLICY MEMO #PWA-16-01- SPECIFICATIONS FOR RETROREFLECTIVE TRAFFIC SIGN MATERIALS.

Typical Details

DETAIL "B"
 Triangular Slip Base Assembly For 2-1/2" Perforated Square Tube Sign Post
 Slip Washer
 Post Receiver
 Redi-Torque Bolt
 Facing Incoming Traffic
 Washer
 Flange Nut
 2-1/2" Square Post Receiver

Notes:
 1. Dimensions and certain details for the parts used to assemble the slip base connections are intentionally not shown. Slip base connections are patented manufactured products that are in compliance with NCHRP 350 crash test criteria. The base connection details are only shown on this plan to illustrate how the parts are assembled. The complete assembly must be designed to withstand 150 mph Base Wind Speed per 2013 AASHTO Standard Specifications for Structural Supports for Highway Signs, Luminaires, and Traffic Signals, 6th edition and interims.
 2. For standard ground sign installation, see detail entitled "Ground Sign Assembly Details".

DATE	DESCRIPTION
04-09-2019	UPDATED MATERIAL NOTES
02-28-2020	ADDED ISOMETRIC VIEW
02-05-2021	UPDATED POST BASE HEIGHT

BROWARD COUNTY FLORIDA

PUBLIC WORKS DEPARTMENT TRAFFIC ENGINEERING DIVISION

DESIGN BY: CARMELO CARATOZZOLO, P.E. SCALE: NTS
 DRAWN BY: STEPHON RAMOUTAR
 CHECKED BY: ANDREW SEBO, P.E., PTOE

SHEET NO.
1 OF 1

GUIDE TO USE THIS STANDARD:

- Calculate the Total Panel Area and the centroid 'C' for an individual sign or a sign cluster.
- Determine the height 'H' from the groundline for the individual sign or the cluster.
- Consult the Post Size Table and find the intersection point.
- Design the post and the foundation according to the required Post Size and Assembly Details.

Post Size Table

H' Sign Assembly Height (ft) (measure from ground)	Total Panel Area (sf)
3	3
4	4
5	5
6	6
7	7
8	8
9	9
10	10
11	11
12	12
13	13
14	14
15	15
16	16
17	17
18	18
19	19
20	20

*REGARDLESS OF POST SIZE TABLE IF A SIGN PANEL IS EQUAL TO OR GREATER THAN 4 FEET IN WIDTH, A TWO POST INSTALLATION IS REQUIRED WITH A TRIANGULAR SLIP BASE

Sign Post with 3" x 7 ga. Square Anchor

Sign Post with Triangular Slip Base

Hardware Includes 2 each 3/8" x 3-1/2" GR. 8 Flanged Shoulder Bolt and Flange Nut.

Note: Dimensions and certain details for the parts used to assemble the slip base connections are intentionally not shown. Slip base connections are patented manufactured products that are in compliance with NCHRP 350 crash test criteria. The base connection details are only shown on this plan to illustrate how the parts are assembled. The complete assembly must be designed to withstand 150 mph Base Wind Speed per 2013 AASHTO Standard Specifications for Structural Supports for Highway Signs, Luminaires, and Traffic Signals, 6th edition and interims.

DATE	DESCRIPTION
03-21-2017	UPDATED POST SIZE
11-24-2020	ADDED POST SIZE NOTE
02-05-2021	UPDATED POST BASE HEIGHT

BROWARD COUNTY FLORIDA

PUBLIC WORKS DEPARTMENT TRAFFIC ENGINEERING DIVISION

DESIGN BY: YVES D'ANJOU, P.E. SCALE: NTS
 DRAWN BY: STEPHON RAMOUTAR
 CHECKED BY: ANDREW SEBO, P.E., PTOE

SHEET NO.
1 OF 1

PAVEMENT MARKING AND SIGNING NOTES

- THERMOPLASTIC SHALL CONFORM TO THE REQUIREMENTS OF THE FLORIDA DEPARTMENT OF TRANSPORTATION STANDARD SPECIFICATIONS FOR ROAD AND BRIDGE CONSTRUCTION, SEE SECTION 711-MINIMUM THICKNESS 90 MILS (ALKYD ONLY).
- ALL SIGNS & MARKINGS SHALL CONFORM TO THE REQUIREMENTS OF THE MANUAL ON UNIFORM TRAFFIC CONTROL DEVICES FOR STREETS AND HIGHWAYS, FDOT ROADWAY AND TRAFFIC DESIGN STANDARDS, AND BROWARD COUNTY TRAFFIC ENGINEERING DIVISION STANDARDS.
- THERMOPLASTIC SHALL BE USED UNLESS OTHERWISE APPROVED BY BROWARD COUNTY TRAFFIC ENGINEERING DIVISION AND THE CITY ENGINEER. ALL PAVEMENT MARKINGS SHALL BE THERMOPLASTIC EXCEPT PARKING SPACE MARKINGS WHICH SHALL BE PAINT.
- THESE INSTALLATIONS SHALL BE IN ACCORDANCE WITH THE FLORIDA DEPARTMENT OF TRANSPORTATION STANDARD SPECIFICATIONS FOR ROAD AND BRIDGE CONSTRUCTION LATEST EDITION. HOWEVER, WHERE CONFLICTS EXIST, THIS TYPICALLY SHALL TAKE PRECEDENT OVER FDOT STANDARD SPECIFICATIONS.
- ONE BLUE / BLUE REFLECTIVE PAVEMENT MARKER SHALL BE PLACED IN THE MIDDLE OF THE TRAFFIC LANE NEAREST TO AND DIRECTLY IN FRONT OF THE FIRE HYDRANT.
- ALL R1-1 STOP SIGNS SHALL BE 30" x 30" AND ALL R1-1, R2-1, R5-1 AND D-3's SHALL BE DIAMOND GRADE, TYPE XI SHEETING.
- ALL HANDICAP SPACES, RAMPS, AND ACCESS AREAS SHALL COMPLY IN STRICT ACCORDANCE WITH THE "2012 FLORIDA ACCESSIBILITY CODE FOR BUILDING CONSTRUCTION" AND THE "2010 ADA STANDARDS FOR ACCESSIBLE DESIGN". ANY DISCREPANCY IN THE CODE OR ON THE PLAN SHALL BE CALLED TO THE ENGINEER'S ATTENTION PRIOR TO CONSTRUCTION.
- PAVEMENT MARKINGS LOCATED IN BRICK PAVERS SHALL BE THE APPROPRIATE COLOR AND HIGH INTENSITY REFLECTORIZED BRICK PAVERS PER FDOT STANDARDS. COLORED BRICK PAVERS IN PARKING SPACES DO NOT NEED TO BE REFLECTORIZED.
- ALL SIGNS REQUIRE A SEPARATE BUILDING PERMIT.
- PARKING SPACES ARE NOT REQUIRED TO BE REFLECTORIZED.
- ALL REFLECTIVE PAVEMENT MARKERS SHALL BE INSTALLED PER BROWARD COUNTY TRAFFIC ENGINEERING STANDARDS, SHALL BE CLASS "B", AND APPROVED BY BROWARD COUNTY TRAFFIC ENGINEERING AND THE CITY ENGINEER BEFORE INSTALLATION.
- ALL PAVEMENT MARKINGS AND SIGNAGE SHALL CONFORM TO BROWARD COUNTY TRAFFIC ENGINEERING STANDARDS (LATEST EDITION).
- ALL TRAFFIC CONTROL DEVICES MAINTAINED BY BROWARD COUNTY THAT ARE REMOVED OR DAMAGED BY CONSTRUCTION, SHALL BE REPLACED BY CONTRACTOR USING CURRENT BROWARD COUNTY TRAFFIC ENGINEERING DIVISION STANDARDS.
- CONFLICTING EXISTING PAVEMENT MARKINGS SHALL BE REMOVED BY WATER BLASTING OR SAND BLASTING.

Jeffrey T. Schnars, Professional Engineer, State of Florida, License No. 46697.
 This item has been digitally signed and sealed by Jeffrey T. Schnars, P.E. on 10/11/2023.
 Printed copies of this document are not considered signed and sealed and the signature must be verified on any electronic copies.

DATE	DESCRIPTION
03-21-2017	UPDATED POST SIZE
11-24-2020	ADDED POST SIZE NOTE
02-05-2021	UPDATED POST BASE HEIGHT

BROWARD COUNTY FLORIDA

PUBLIC WORKS DEPARTMENT TRAFFIC ENGINEERING DIVISION

DESIGN BY: YVES D'ANJOU, P.E. SCALE: NTS
 DRAWN BY: STEPHON RAMOUTAR
 CHECKED BY: ANDREW SEBO, P.E., PTOE

SHEET NO.
1 OF 1

SCHNARS ENGINEERING CORPORATION

947 CLINT MOORE ROAD
 BOCA RATON, FLORIDA 33487
 CERTIFICATE OF AUTHORIZATION No. 6640

ORIGINAL: OCT. 2022

REVISIONS:

1	12/23 CITY COMMENTS
2	10/11/23 CITY COMMENTS
3	
4	
5	

PROJECT:
NOVE OF MARGATE

TASK:
CONSTRUCTION DETAILS

STATE:
FLORIDA

JOB NO.	SCALE
17180	

DRAWN	CHECKED	Q.C.
RAD	JWM	JTS

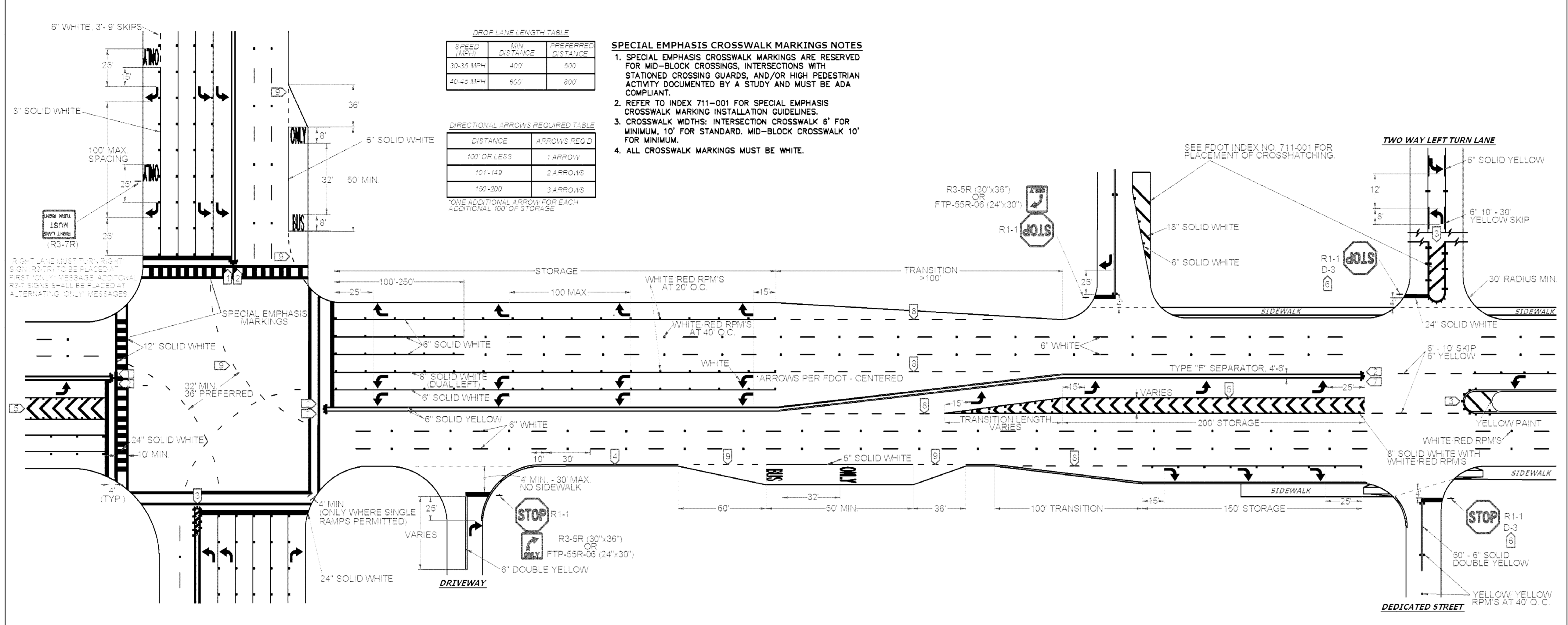
DATE	DESCRIPTION
03-21-2017	UPDATED POST SIZE
11-24-2020	ADDED POST SIZE NOTE
02-05-2021	UPDATED POST BASE HEIGHT

BROWARD COUNTY FLORIDA

PUBLIC WORKS DEPARTMENT TRAFFIC ENGINEERING DIVISION

DESIGN BY: YVES D'ANJOU, P.E. SCALE: NTS
 DRAWN BY: STEPHON RAMOUTAR
 CHECKED BY: ANDREW SEBO, P.E., PTOE

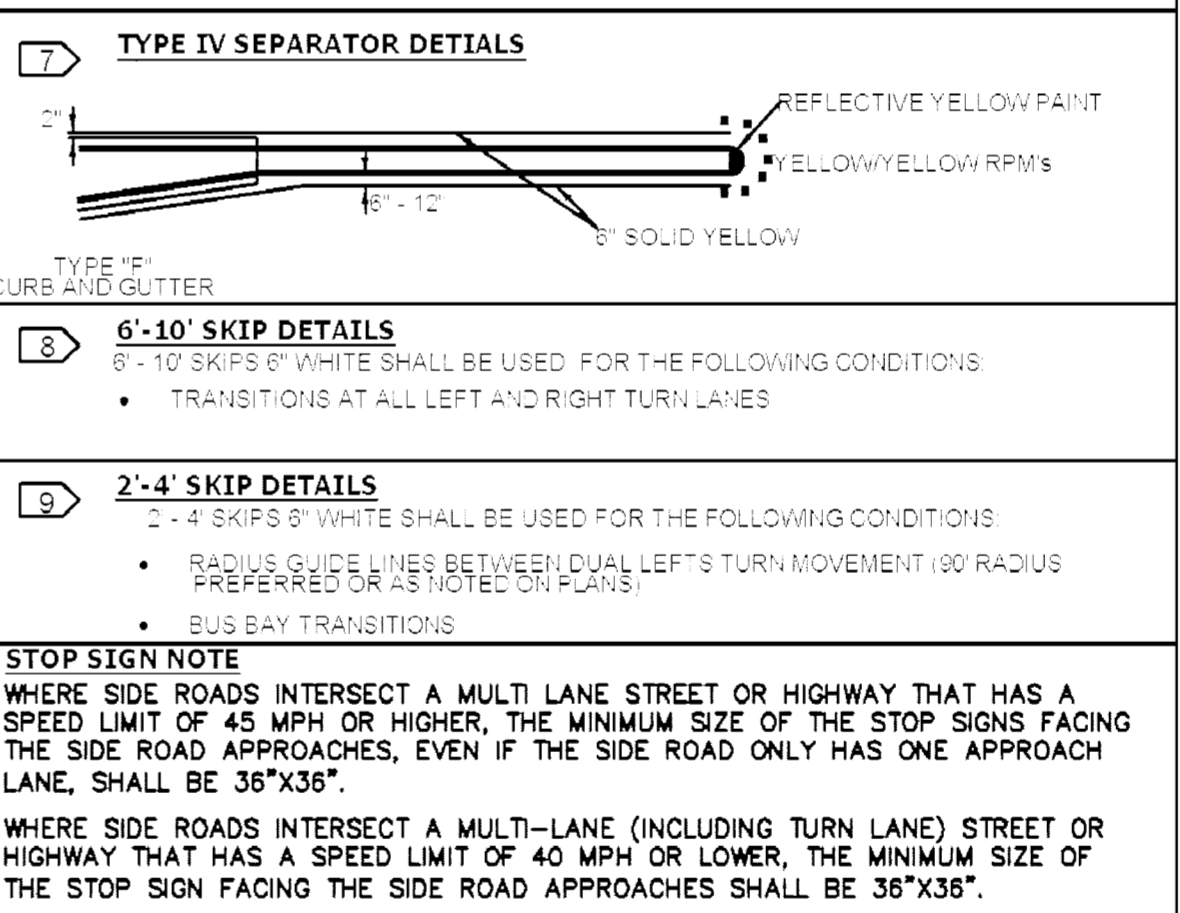
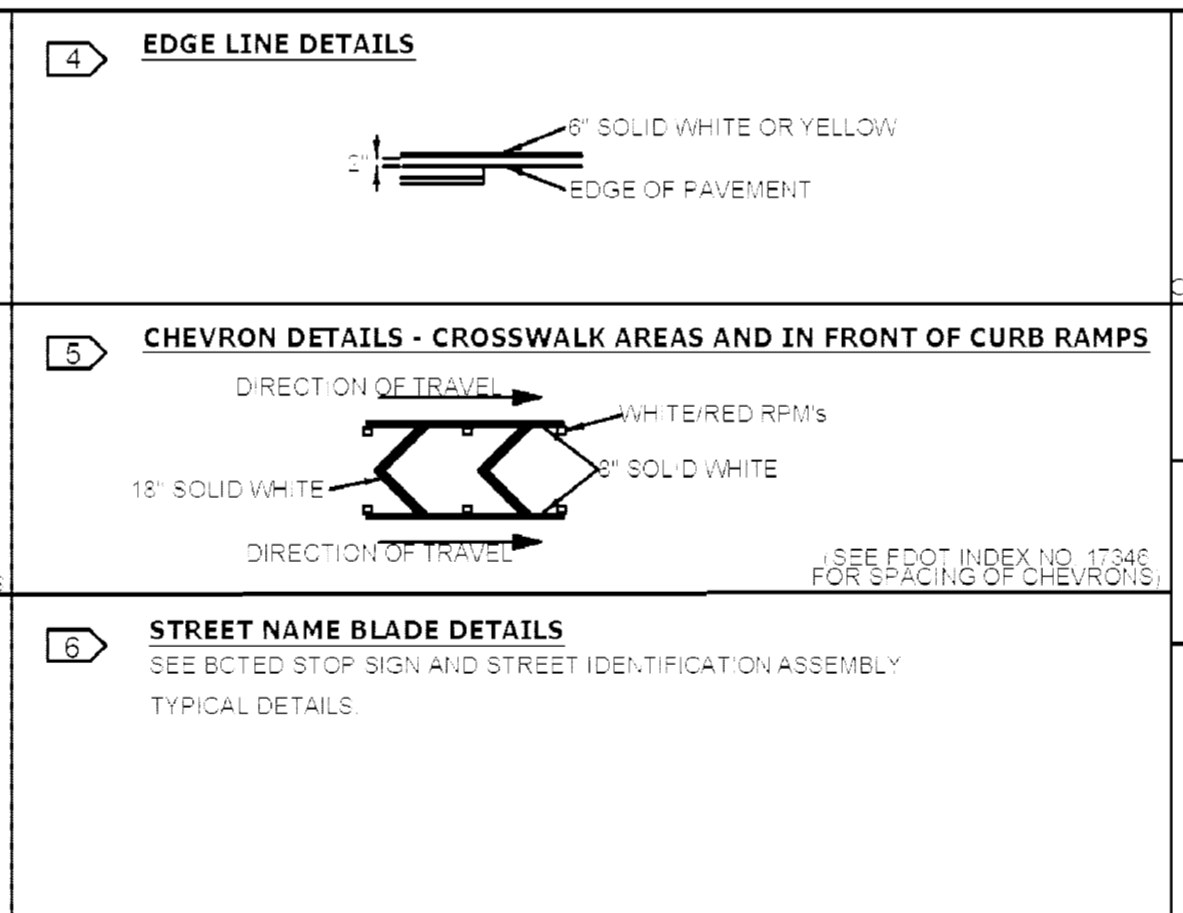
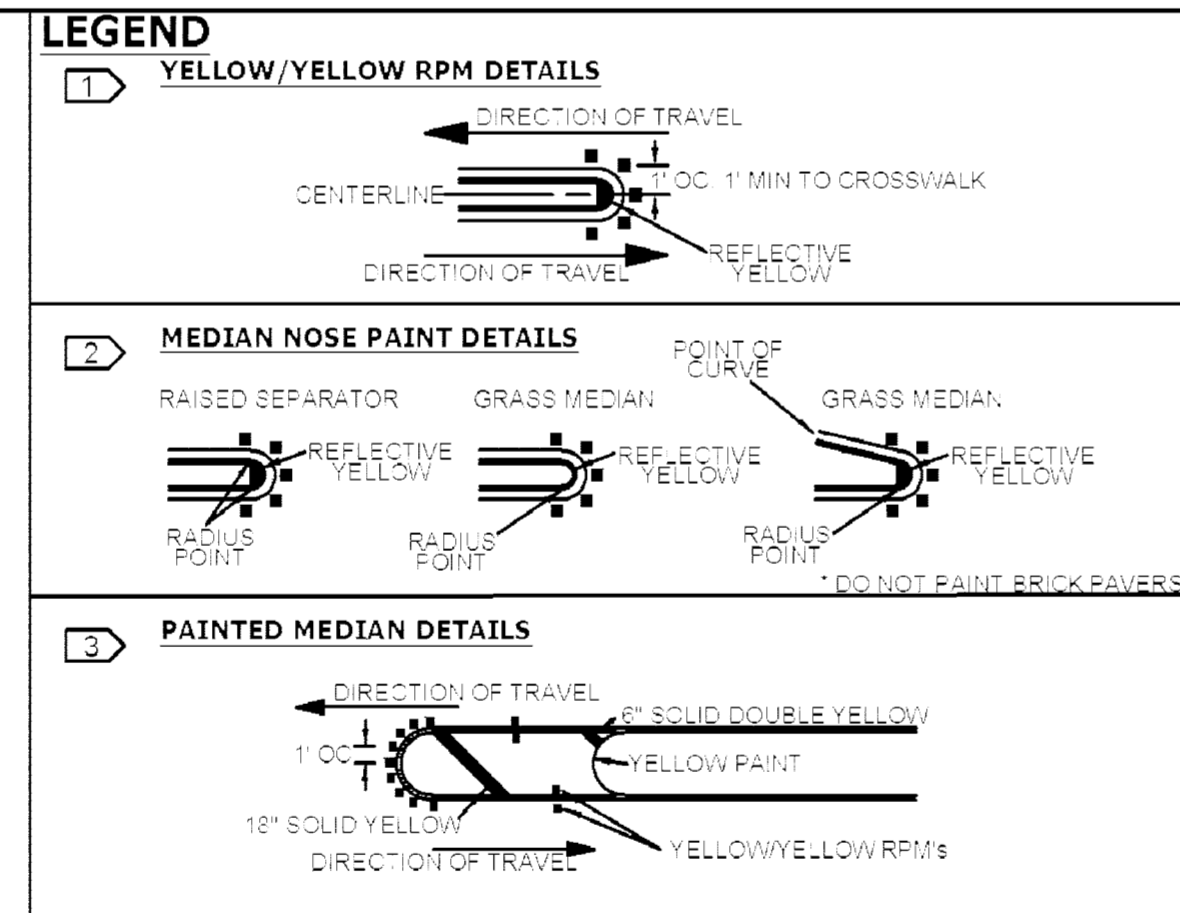
SHEET NO.
1 OF 1



NOTES:

- BROWARD COUNTY TRAFFIC ENGINEERING DIVISION'S REVIEW DOES NOT INCLUDE A REVIEW AND ACCEPTANCE OF THE PROJECT'S DESIGN OR OPERATION. THESE ITEMS ARE TO BE REVIEWED AND APPROVED BY THE CITY ENGINEER.
- BROWARD COUNTY TRAFFIC ENGINEERING DIVISION DOES NOT REVIEW AND APPROVE, OR INSPECT AND ACCEPT THE FOLLOWING ITEMS FOR MAINTENANCE: PAVEMENT MARKINGS ON OR ADJACENT TO PAVER BRICKS, PAINTED ASPHALT, STAMPED ASPHALT OR PAVEMENT MARKINGS MADE OF PAVER BRICKS, RAISED INTERSECTIONS AND RELATED MARKINGS AND SIGNING, UN-WARRANTED MID-BLOCK CROSSWALKS AND RELATED MARKINGS AND SIGNING, UN-WARRANTED CROSSWALKS AND RELATED MARKINGS AND SIGNING, PAINTED/DECORATIVE CROSSWALKS, RAISED CROSSWALKS AND RELATED MARKINGS AND SIGNING, ADVANCED WARNING PAVEMENT MARKINGS FOR SPEED TABLES, BLINKER SIGNS, RECTANGULAR RAPID FLASHER BEACONS AND RELATED MARKINGS AND SIGNING, ON-STREET PARKING AND RELATED MARKINGS AND SIGNING, IN-ROAD LIGHTING AND RELATED MARKINGS AND SIGNING, GREEN BIKE LANES, FLEXIBLE DELINEATORS, DECORATIVE SIGNS AND DECORATIVE SIGN POSTS, PLANTERS, ON-SITE PAVEMENT MARKINGS AND SIGNING, OFF-SITE PAVEMENT MARKINGS AND SIGNING IN RIGHT-OF-WAY THAT IS NOT DEDICATED FOR PUBLIC USE, SIDEWALK WORK OR ASPHALT WORK.

- NOTES**
- ALL PAVEMENT MARKINGS SHALL BE ALKYD BASED THERMOPLASTIC AND FULLY RETROREFLECTORIZED.
 - ALL PAVEMENT MARKINGS ON PAVER SYSTEMS SHALL BE 3M 380/381 SERIES TAPE OR EQUIVALENT AND APPLIED WITH P60 ADHESIVE AS PER MANUFACTURERS SPECIFICATIONS.
 - ALL PAVEMENT MARKINGS AND SIGNING SHALL BE IN ACCORDANCE WITH THE "MANUAL ON UNIFORM TRAFFIC CONTROL DEVICES", BCTED STANDARDS, AND FDOT DESIGN STANDARDS.
 - SEE FDOT INDEX NO 706-001 FOR PLACEMENT OF RPM'S (FOR BULLNOSE RPM TREATMENT, SEE LEGEND NO. 1)
 - RPM'S SHALL BE CLASS "B" OR EQUIVALENT, APPLIED WITH EPOXY OR BITUMINOUS ADHESIVE.
 - FDOT APPROVED SEALER SHALL BE USED WHEN APPLYING MARKINGS ON CONCRETE.
 - FOR BIKE LANE DETAILS SEE FDOT INDEX NO. 711-002.
 - EXISTING MARKINGS SHALL BE REMOVED BY WATER BLASTING OR SAND BLASTING.
 - ALL STOP LINES TO BE 4' BEHIND CROSSWALK OR SIDEWALK.
 - PAVEMENT MARKING REFLECTIVITY SHALL BE UNIFORM ACROSS THE ENTIRE STRIPE AND SHALL HAVE A MINIMUM REFLECTIVITY READING OF 250 MILLICANDELAS FOR WHITE AND 175 MILLICANDELAS FOR YELLOW.
 - ALL PRODUCTS MUST BE ON FDOT'S APPROVED PRODUCTS LIST (APL).
 - RPM'S SHALL NOT BE INSTALLED ADJACENT TO BIKE LANES.
 - LONGITUDINAL CROSSWALK MARKINGS SHALL BE INSTALLED AT ALL CROSS STREETS ON COUNTY ROADS THAT ARE FOUR LANES OR GREATER.



REVISIONS

DATE	DESCRIPTION
11-24-2020	UPDATED NOTES
04-14-2021	UPDATED NOTES
05-06-2022	UPDATED NOTES

BROWARD COUNTY FLORIDA

PUBLIC WORKS DEPARTMENT TRAFFIC ENGINEERING DIVISION

DESIGN BY: CARMELO CARATONZOLO, P.E. SCALE: NTS
DRAWN BY: STEPHON RAMOUTAR
CHECKED BY: CARMELO CARATONZOLO, P.E.

PAVEMENT MARKINGS AND SIGNS DETAILS

SHEET NO. 1 OF 1

Jeffrey T. Schnars, Professional Engineer, State of Florida, License No. 46697.
This item has been digitally signed and sealed by Jeffrey T. Schnars, P.E. on 10/11/2023.
Printed copies of this document are not considered signed and sealed and the signature must be verified on any electronic copies.



LEGEND

- EXISTING CANAL
EDGE OF WATER
- PROPOSED LAKE & CANAL
EDGE OF WATER

Jeffrey T. Schnars, Professional Engineer, State of Florida, License No. 46697.
 This item has been digitally signed and sealed by Jeffrey T. Schnars, P.E. on 10/11/2023.
 Printed copies of this document are not considered signed and sealed and the signature must be verified on any electronic copies.

ORIGINAL: AUG. 2023

REVISIONS:	DATE	BY	COMMENTS
1	10/11/23	JTS	CITY COMMENTS
2			
3			
4			
5			

PROJECT:	NOVE OF MARGATE
TASK:	CANAL EXHIBIT

MARGATE	FLORIDA
---------	---------

JOB NO.	17180
DRAWN	RAD
DESIGNED	JTS
CHECKED	JWM
Q.C.	JTS
SHEET	11 OF 11