

City of Margate

Professional Architectural Services

April 26, 2016



Architect's, Inc.



*“Designing Quality Architecture that
Builds Lasting Relationships”*

Your Topics

1. Please walk through of a general project timeline using one of your past projects as an example.
2. Describe a past project that presented significant challenges. How did your firm overcome those challenges as the project progressed?
3. Describe your project communication protocol with municipalities or other clients that you serve.
4. Please describe your firm's approach to creating bid documents and working with Purchasing.
5. The expertise and availability of the person that your firm will designate as the point person and/or construction manager? For all projects that may be awarded to your firm resulting from this RFQ or only listed Projects
6. Experience and approach to small scale projects like those listed in the RFQ document.

Your Criteria

FIRM'S EXPERIENCE IN SOUTH FLORIDA 0 – 25 _____

FIRM'S PERSONNEL QUALIFICATIONS 0 – 30

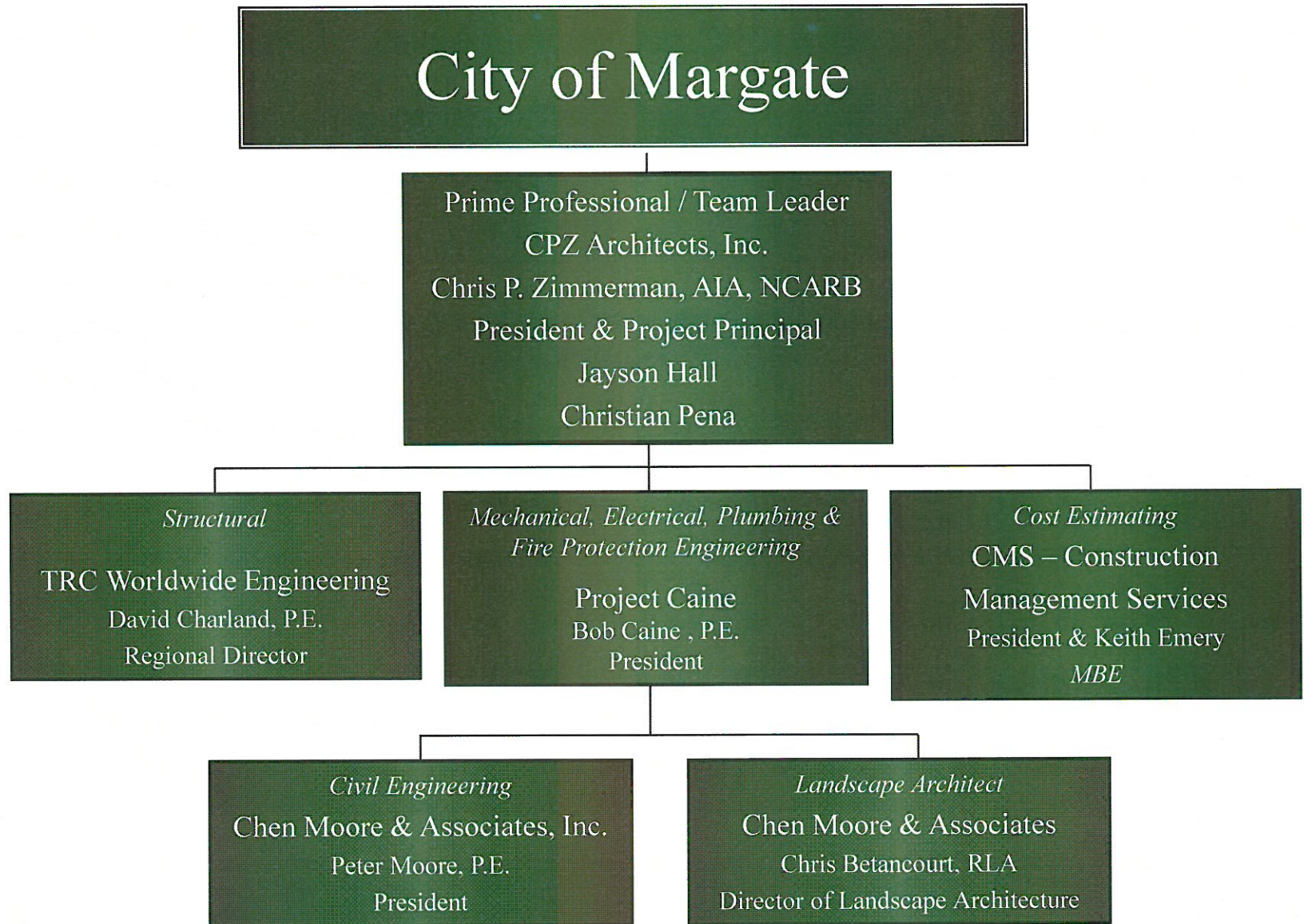
FIRM'S GOVERNMENTAL EXPERIENCE 0 – 20 _____

FIRM'S APPROACH TO PROJECT MANAGEMENT 0 – 15 _____

FIRM'S RESOURCES, PERSONNEL AVAILABILITY
AND COMMITMENT 0 – 10 _____

TOTAL POINTS _____

The TEAM



The TEAM

CPZ Architects, Inc.

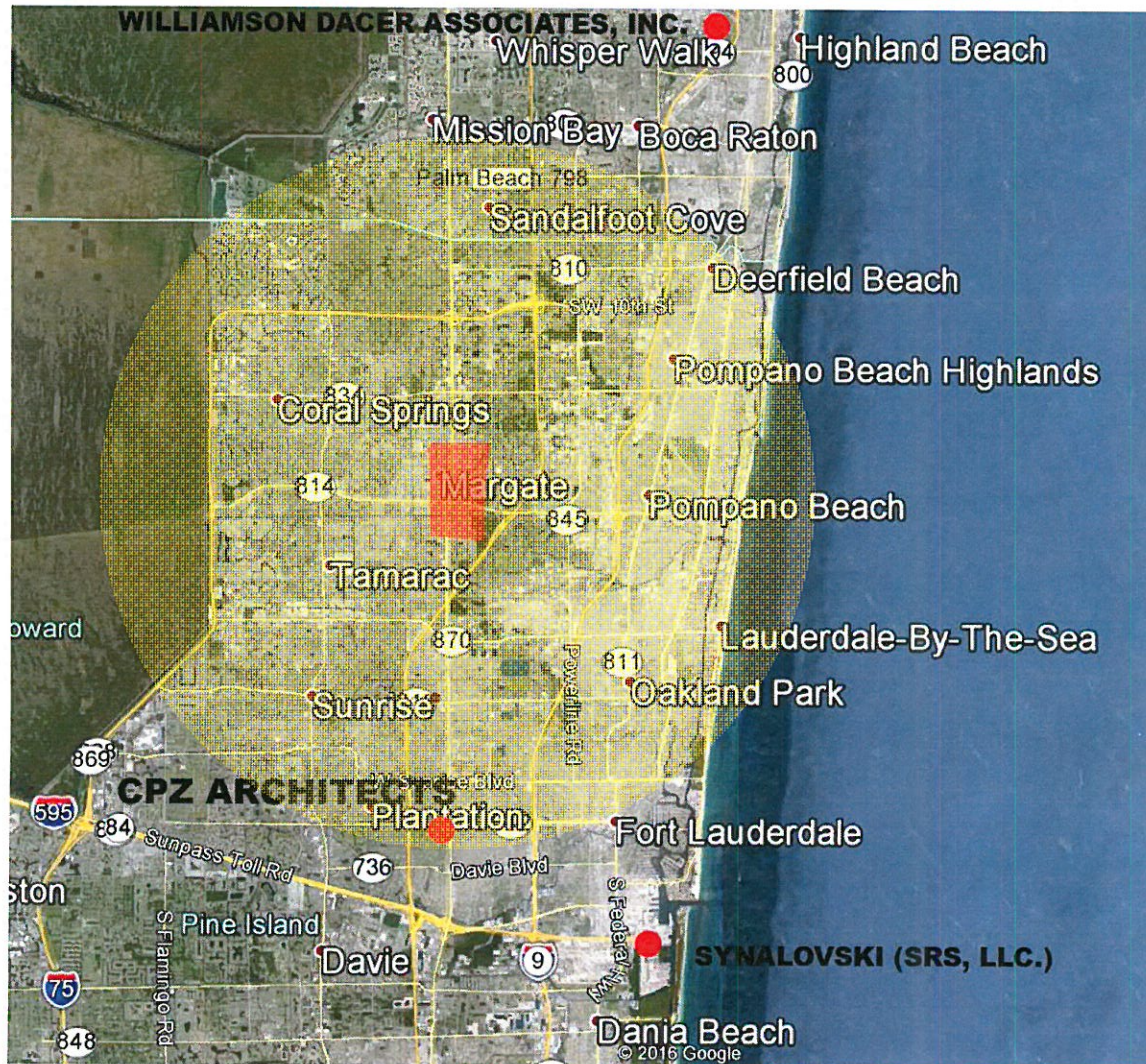


CPZ Architects, Inc.

- 14 Years in Business
- No Litigation
- \$2,000,000 Professional Liability
- 10 Staff Members
- Licenses
 - ◆ 3 Florida Licensed Architects (30%)
 - ◆ Florida Licensed Corporation
 - ◆ 1 – General Contractor
 - ◆ 2 LEED Accredited Professionals

CPZ Architects, Inc.

Location MAP – 20 minutes from Margate



Your Topic #5

- The expertise and availability of the person that your firm will designate as the point person and/or construction manager? For all projects that may be awarded to your firm resulting from this RFQ or only listed Projects

The TEAM – CPZ Architects

Chris P. Zimmerman, AIA



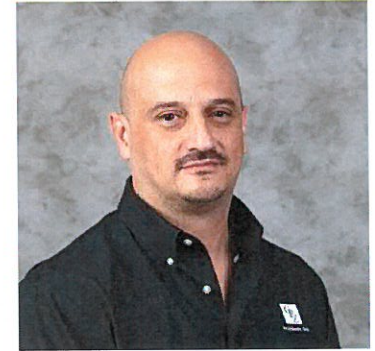
- Firm Principal
- 28 years, Architect in Broward County
- Served over 20 Government Agencies
- Served as a City Architect for Fort Lauderdale for 10 years.
- Community Service
 - ◆ City of Plantation Councilmember
 - ◆ Gateway 7 CRA, member
 - ◆ Midtown Development District

Principle in charge of ALL your projects

The TEAM – CPZ Architects

Christian Pena

- Project Manager.
- 18 years of architectural experience.
- Served over 7 Governmental Agencies
- Has 10 years Experience in many different types of Projects.
- Masters in Architecture
- Minor in Interior Design

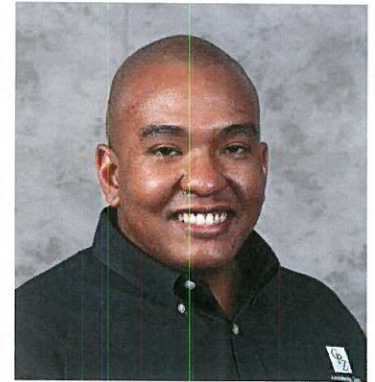


Project Manager, Daily Communication

The TEAM – CPZ Architects

Jayson Hall

- Project Manager
- 10 years of architectural experience
- 10 years with CPZ Architects
- Served over 8 Governmental Agencies
- Has proven Construction Administration Experience
- Residence is only 10 minutes from the City of Margate.

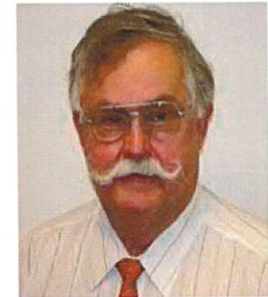


Project Manager, Daily Communication

The TEAM – TRC Worldwide

David Charland, P.E

- Regional Director with 51 years of experience in high quality Structural Engineering and Project Management
- Was on Florida Board of Professional Engineers for about 8 years
- Structural Engineering and Project Management for many Municipal and County facilities.



Nitin Ranadive

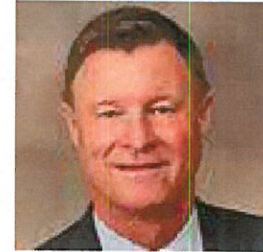
- Director of Operations, Senior Engineering Manager
- P.E in M.D., has applied for Florida P.E. license
- Has 31 years of experience in Structural Engineering
- Has designed many Residential Buildings, Hotels, Parking Garages, Retail, Office Buildings in USA and abroad.



The TEAM – Project Caine

Bob Caine, P.E.

- Professional Engineer License
- 25 years professional experience



Jacob Arana, P.E.

- Vice President
- Senior Mechanical Engineer
- 15 years professional experience



Bach Nguyen, P.E.

- Senior Mechanical Engineer
- 18 years professional experience



The TEAM – Chen Moore

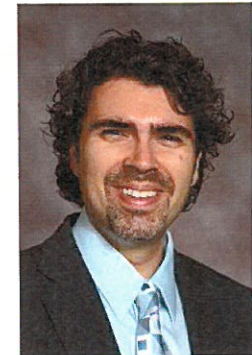
Peter Moore, P.E

- President
- Professional Engineer, LEED AP
- 18 years design experience
- Storm water Management Inspector
- 18 years experience in Civil Engineering



Cristobal Betancourt, RLA

- Director of Planning & Landscape Architecture
- Registered Landscape Architect
- 20 years experience in Landscape Architecture
- 8 years experience in Municipal work throughout South Florida



The TEAM – CMS

Keith Emery,

Construction Management Services



- Principal-in-Charge
- Certified Contractor Instructor for DOT
- 49 years professional experience
- 38 years experience in Governmental work

Your Criteria

FIRM'S EXPERIENCE IN SOUTH FLORIDA 0 – 25 _____

FIRM'S PERSONNEL QUALIFICATIONS 0 – 30 _____

FIRM'S GOVERNMENTAL EXPERIENCE 0 – 20 _____

FIRM'S APPROACH TO PROJECT MANAGEMENT 0 – 15 _____

FIRM'S RESOURCES, PERSONNEL AVAILABILITY
AND COMMITMENT 0 – 10 _____

TOTAL POINTS _____



*“Designing Quality Architecture
that Builds Lasting Relationships”*

CPZ Experience with Government

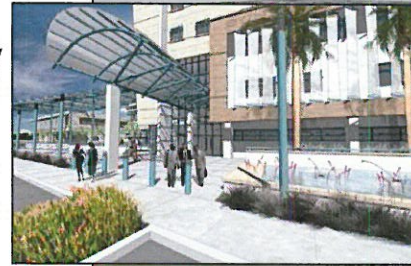
- City of Sunrise (Continuing Contract, 5 years)
- Town of Davie (Continuing Contract, 12 years)
- City of Coral Springs (Continuing Contract 12 years)
- City of Coconut Creek (Continuing Contract, 2 years)
- City of Miami Gardens (Continuing Contract, 6 years)
- Broward Sheriff's Office (Continuing Contract, 6 years)
- City of Miramar (Continuing Contract, 3 years)
- St. Lucie County (Continuing Contract, 1 year)
- Federal Reserve Bank (Continuing Contract, 6 years)
- Town of Southwest Ranches (Continuing Contract, 2 years)
- ***We have NEVER failed to renew a continuing contract***

TRC Worldwide Engineering

Previously

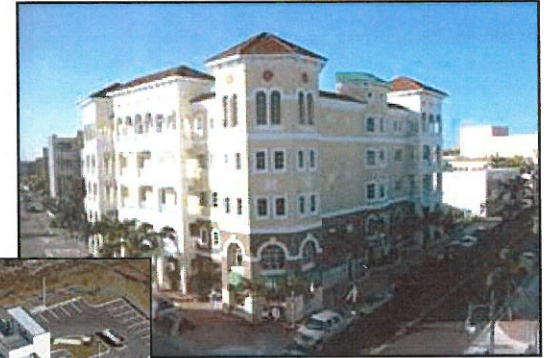
Jenkins and Charland

- City of Sunrise
Public Safety
Complex & Fire
Station #72
- Wilton Manors City
Hall & Police
Station
- Broward County —
E.O.C.



TRC Worldwide Engineering

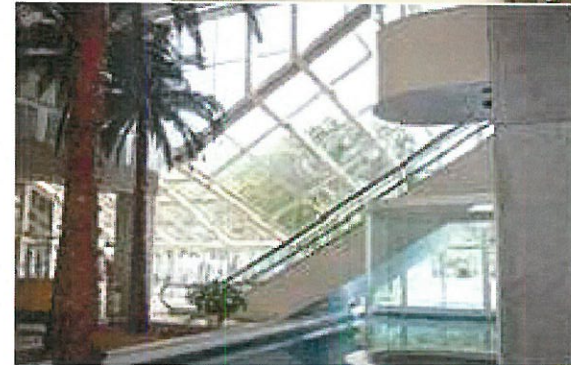
- Clerk of the Courts Building
- Collier County Courthouse
- Collier County Emergency Services Complex
- New City Hall Annex, City of Jacksonville



Project CAINE, Inc.

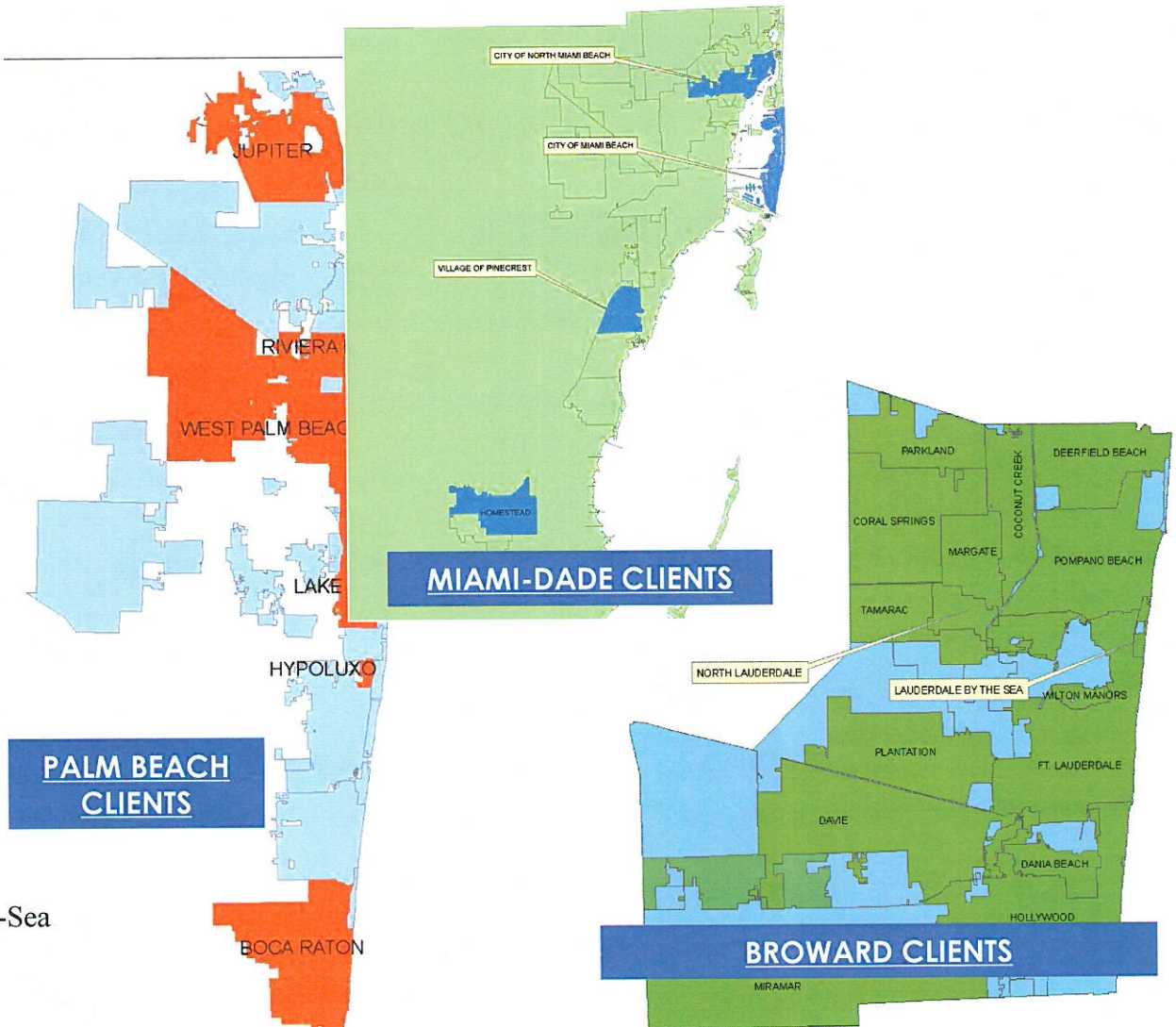
Municipal Projects

- Aventura Government Center and Police Station
- Broward County Courthouse Renovations
- Broward County Library
- Broward County Purchasing Dept.
- City of Miami Beach Public Library
- City of Pompano Beach Public Library
- Palm Beach County Convention Center
- Coconut Creek Community Center
- Westwind Community Center
- Miami Federal Courthouse
- Miami-Dade County Solid Waste Dept.
- City of Miami Beach County Sheriff
- Palm Beach County International Airport
- Fort Lauderdale/Hollywood International Airport
- Broward County Housing Authority
- Rivera Beach Affordable Housing Dept.
- Panama International Airport
- US Federal Courthouse



Chen Moore & Associates

- City of Miami Beach
- City of North Miami Beach
- Village of Pinecrest
- Miami-Dade County
- City of Key West
- Village of Islamorada
- City of Marathon
- City of Riviera Beach
- City of West Palm Beach
- City of Lake Worth
- City of Boca Raton
- Town of Jupiter
- Town of Hypoluxo
- City of Fort Lauderdale
- Broward County
- City of Coral Springs
- Town of Davie
- City of Hollywood
- City of Deerfield Beach
- City of Miramar
- City of Plantation
- City of Pompano Beach
- City of Wilton Manors
- City of Dania Beach
- City of Margate
- Town of Lauderdale-by-the-Sea
- City of North Lauderdale
- City of Parkland
- City of Coconut Creek
- City of Tamarac



Chen Moore, City of Margate Experience



- El Nino Grande Drainage Improvements
- NW 79th Avenue Stormwater Study
- City Hall Parking Lot
- Holiday Springs Blvd Irrigation
- Margate Boulevard Pavement Markings
- Southgate Median Project
- Secondary Intersection Inventory
- Margate CRA Intersections Pilot Project
- Coconut Creek Parkway Median Improvement
- Margate Blvd # 1 Site Investigation and Base Drawings
- Margate Blvd Task 1A
- Margate Boulevard Design and Construction Services
- Landscape MOT
- Margate CRA - MOT 2
- 58th Avenue
- Coconut Creek Parkway

The TEAM

Team Summary

	<i>Years in Business</i>	<i>Years working with CPZ Architects</i>	<i>Years working together with Chris P. Zimmerman</i>	<i>Government Work</i>	<i>Small or Minority Business</i>	<i>REVIT Project Delivery</i>
<i>CPZ Architects, Inc.</i>	<i>14</i>			<i>75%</i>	<i>*</i>	<i>*</i>
<i>Chen Moore & Associates</i>	<i>28</i>	<i>7</i>	<i>7</i>	<i>80%</i>	<i>*</i>	
<i>TRC Worldwide</i>	<i>47</i>	<i>12</i>	<i>17</i>	<i>60%</i>	<i>*</i>	<i>*</i>
<i>Project Caine</i>	<i>10</i>	<i>3</i>	<i>3</i>	<i>40%</i>	<i>*</i>	<i>*</i>
<i>CMS</i>	<i>34</i>	<i>12</i>	<i>17</i>	<i>80%</i>	<i>*</i>	

Your Criteria

FIRM'S EXPERIENCE IN SOUTH FLORIDA 0 – 25 _____

FIRM'S PERSONNEL QUALIFICATIONS 0 – 30 _____

FIRM'S GOVERNMENTAL EXPERIENCE 0 – 20 _____

FIRM'S APPROACH TO PROJECT MANAGEMENT 0 – 15

FIRM'S RESOURCES, PERSONNEL AVAILABILITY
AND COMMITMENT 0 – 10 _____

TOTAL POINTS _____

Your Topics #1

- Please walk through of a general project timeline using one of your past projects as an example.

Project Approach

Standard Design Phases

- Schematic Design
- Design Development
- Construction Documents
- Permitting
- Bidding
- Construction Administration

Approach – Schematic Design

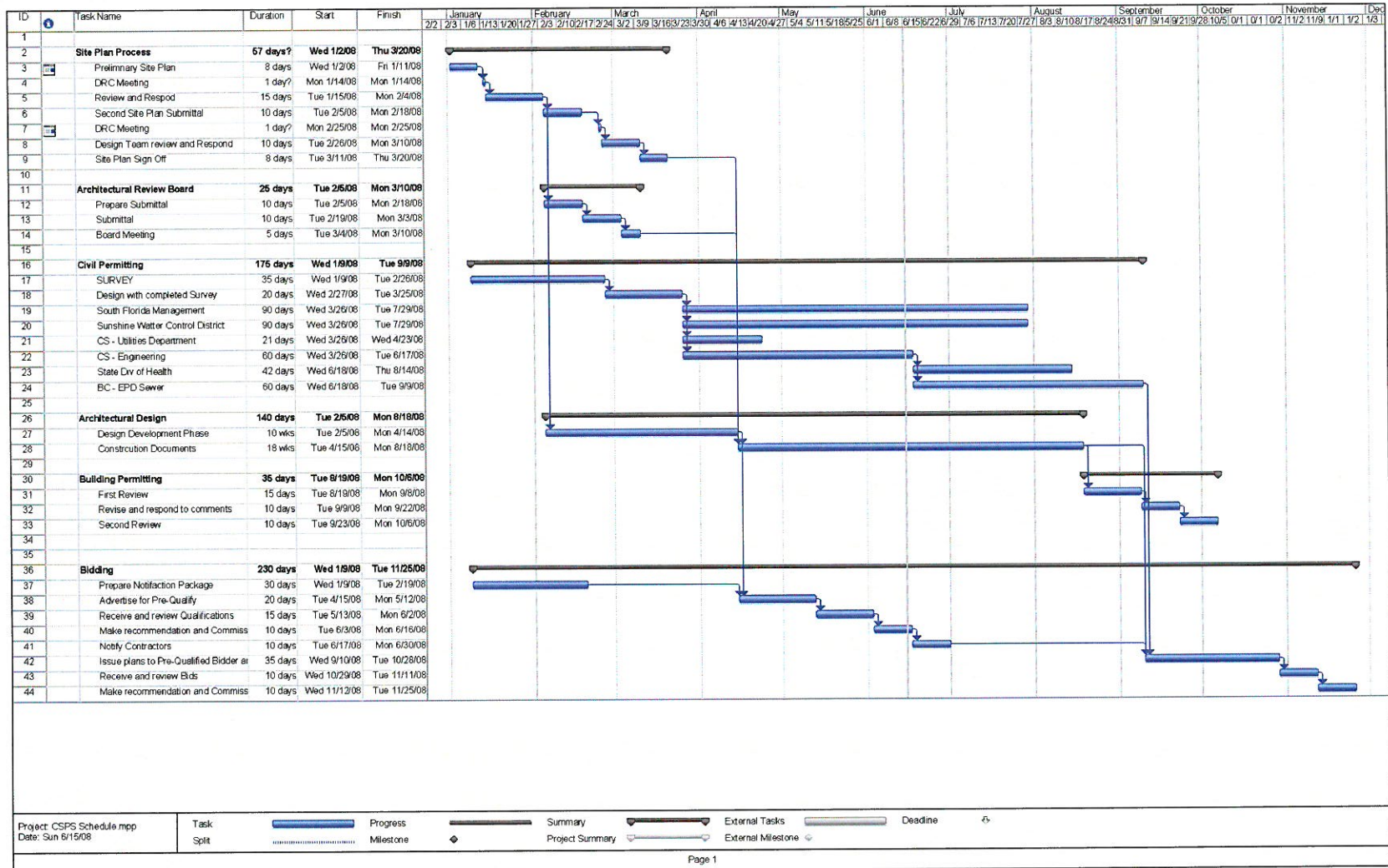
1. Identify YOUR Scope and Budget!

- Meeting with Your Staff
- Visit the site (s), location of first meeting
- Develop the program and scope of the project
- Define the budget & schedule
- Review any Permitting Agency requirements
- Prepare a Schematic Concept of the project
- Summarize the overall project with an estimate of construction costs.
- **Reach Consensus!**

Scheduling

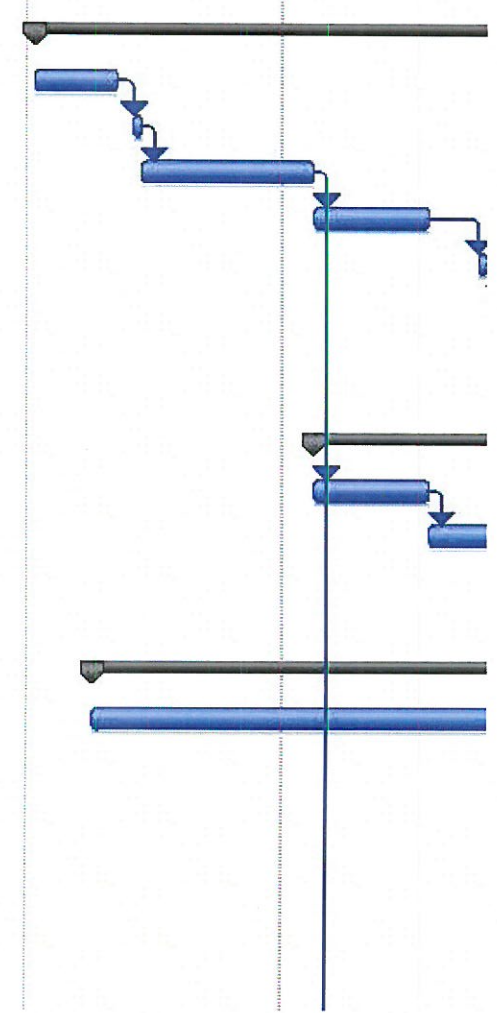
- Schedule Development
 - ◆ Site Plan Process
 - DRC
 - Variances, Rezoning, etc.
 - Site Plan Committee
 - City Commission
- Civil Permitting
- Design Schedule
- Bidding & Award
- Estimated Construction Schedule
- COMPLETE Electronic Schedule Outline

Scheduling



Scheduling

ID	Task Name	Duration	Start	Finish	January					February				
					2/2	2/3	1/6	1/13	1/20	1/27	2/3	2/10	2/17	
1														
2	Site Plan Process	57 days?	Wed 1/2/08	Thu 3/20/08										
3	Preliminary Site Plan	8 days	Wed 1/2/08	Fri 1/11/08										
4	DRC Meeting	1 day?	Mon 1/14/08	Mon 1/14/08										
5	Review and Respod	15 days	Tue 1/15/08	Mon 2/4/08										
6	Second Site Plan Submittal	10 days	Tue 2/5/08	Mon 2/18/08										
7	DRC Meeting	1 day?	Mon 2/25/08	Mon 2/25/08										
8	Design Team review and Respond	10 days	Tue 2/26/08	Mon 3/10/08										
9	Site Plan Sign Off	8 days	Tue 3/11/08	Thu 3/20/08										
10														
11	Architectural Review Board	25 days	Tue 2/5/08	Mon 3/10/08										
12	Prepare Submittal	10 days	Tue 2/5/08	Mon 2/18/08										
13	Submittal	10 days	Tue 2/19/08	Mon 3/3/08										
14	Board Meeting	5 days	Tue 3/4/08	Mon 3/10/08										
15														
16	Civil Permitting	175 days	Wed 1/9/08	Tue 9/9/08										
17	SURVEY	35 days	Wed 1/9/08	Tue 2/26/08										
18	Design with completed Survey	20 days	Wed 2/27/08	Tue 3/25/08										
19	South Florida Management	90 days	Wed 3/26/08	Tue 7/29/08										
20	Sunshine Watter Control District	90 days	Wed 3/26/08	Tue 7/29/08										
21	CS - Utilities Department	21 days	Wed 3/26/08	Wed 4/23/08										
22	CS - Engineering	60 days	Wed 3/26/08	Tue 6/17/08										
23	State Div of Health	42 days	Wed 6/18/08	Thu 8/14/08										



Approach

2. Design Development

- Meeting with Staff
- Develop the project with integrating all the Engineering Disciplines for input and guidance.
- All Design Decisions finalized.
- Complete Building Code review and impact.
- Finalize ALL other agency submittals.
- Refine budget and schedule
- **Reach Consensus!**

Approach

2. Design Development

- BEFORE the Bidding
- Design Development Cost Estimate prepared by CMS
- CPZ advised owner opinion of cost 1 million
- Owner Budgeted \$800,000
- VE items
- Remove items from scope
- Existing Items to remain

CMS-Construction Management Services, Inc. 10 Fairway Drive, Suite 301 Deerfield Beach, FL 33441 954-481-1611 CMS FILE # 2119			
NE FOCAL POINT THRIFT SHOP EXPANSION PROJECT No. 11274-P 227 NW 2ND STREET DEERFIELD BEACH, FLORIDA DESIGN DEVELOPMENT COST ESTIMATE June 10, 2013 PREPARED FOR: CPZ ARCHITECTS, INC.			
MAIN SUMMARY			
DIVISION	DESCRIPTION	AMOUNT	% OF TOTAL
01000	GENERAL CONDITIONS	80,258.70	9.14%
02000	SITE WORK / DEMO	26,310.10	3.00%
03000	CONCRETE	17,028.05	1.94%
04000	MASONRY	5,201.24	0.59%
05000	METALS	9,411.00	1.07%
06000	WOOD AND PLASTICS	70,376.82	8.01%
07000	THERMAL / MOIST. PROTECTION	12,239.36	1.39%
08000	DOORS & WINDOWS	71,616.00	8.15%
09000	FINISHES	87,660.37	9.98%
10000	SPECIALTIES / SIGNAGE	47,861.14	5.45%
11000	EQUIPMENT	0.00	0.00%
12000	FURNISHINGS	0.00	0.00%
13000	SPECIAL CONSTRUCTION	28,666.00	3.26%
14000	CONVEYING SYSTEMS	0.00	0.00%
15000	MECHANICAL	115,653.09	13.17%
16000	ELECTRICAL	110,189.70	12.55%
	SUBTOTAL	5682,468.57	77.71%
5.0%	G.C. OVERHEAD	34,123.43	3.89%
	SUBTOTAL	5716,592.00	81.59%
10.0%	G.C. PROFIT	71,659.20	8.16%
	SUBTOTAL	5788,251.20	89.75%
1.29%	P&P BOND	10,158.44	1.16%
	TOTAL PROBABLE BID	5798,419.64	90.91%
10.00%	OWNER CONTINGENCY	79,841.96	9.09%
	TOTAL PROBABLE CONSTRUCTION COST	5878,261.61	100.00%
DESCRIPTION		ALTERNATE COST	
ALT.- #1-	ADD	SUBSTITUTE FOR INSTALLATION OF ACCORDION SHUTTERS - IMPACT RESISTANT FIXED WINDOWS	\$10,705.76
ALT.- #2-	ADD	RECONFIGURE ENTRANCE 100	\$18,121.07
		TOTAL ALTERNATE COST	\$28,826.83
		AFTER CONTINGENCY	
		BLDG. GSF.	11,058
		BLDG. COST PER SF.	79.42

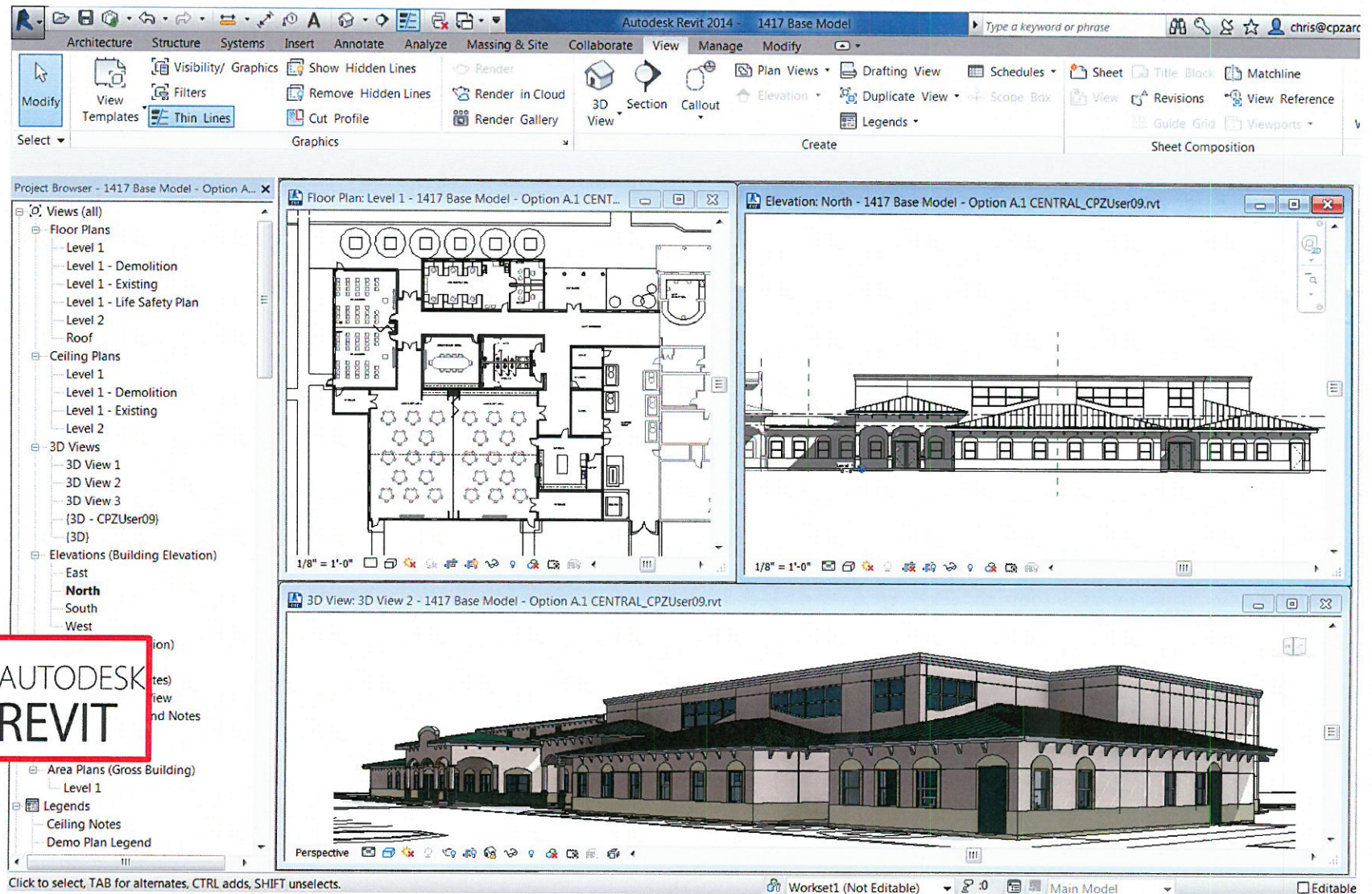
Approach

3. Construction Documents

- Meeting with Staff
- Meetings with all consultants to coordinate the project.
- Meeting with vendors and suppliers
- Coordinated Documents
- Quality Control
- Submittals at 50%, 75% and 95%.
- Finalize Budget and Schedule

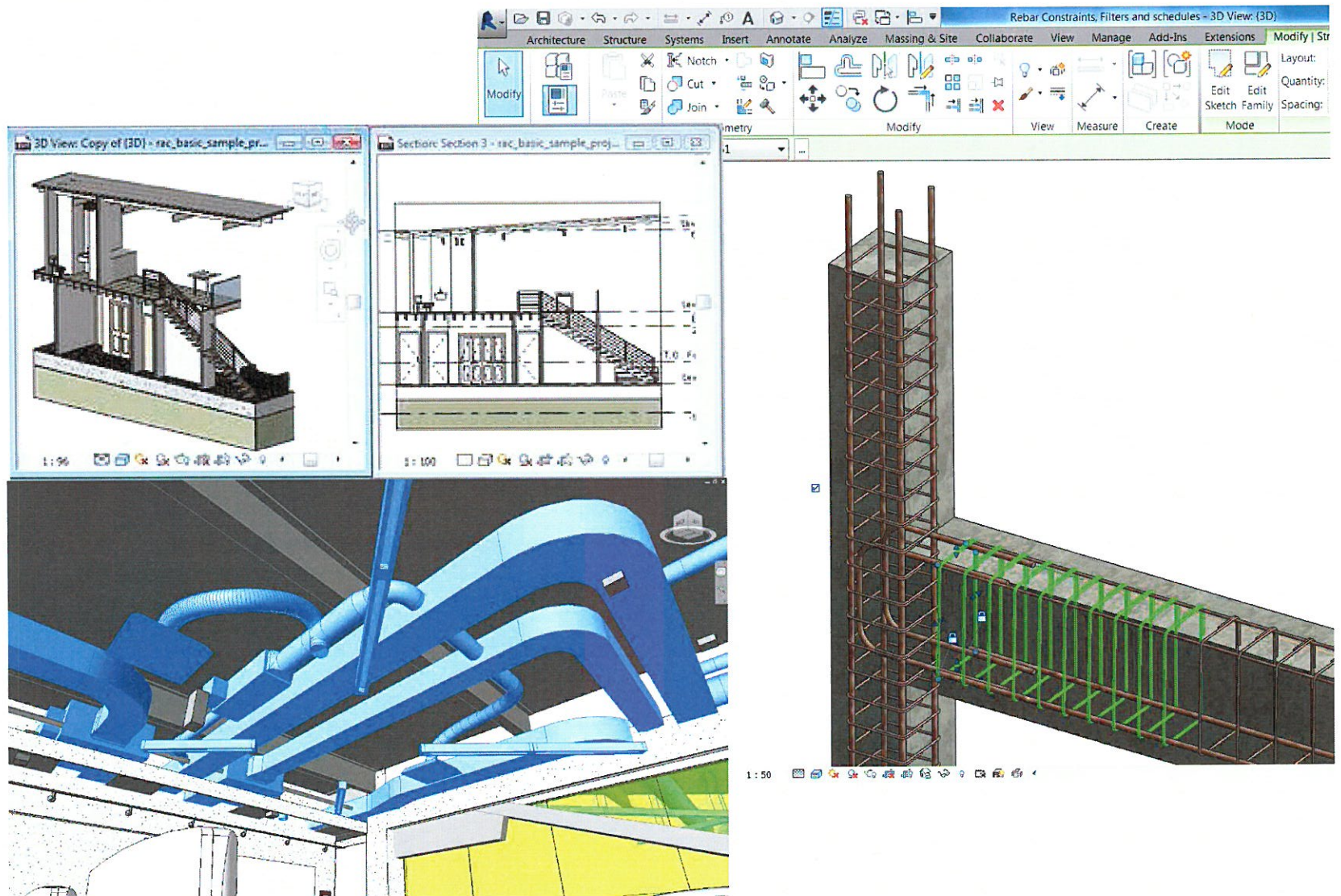
Approach

Building Information Modeling



Approach

Building Information Modeling



CMS

Bids -Under 5% Spread

Vendor	Dooley Mack Constructors	Pirtle Const. Co.	Stiles Const. Co.	
Contact	Zack Manchee	Jessie Brewer	Timothy Moore	
Phone	954 345-8288	954 797-0410	954 627-9148	
Item	Description	TOTAL COST	TOTAL COST	TOTAL COST
Bidder will complete the work for the following prices:				
1	Fire Station (All work to construct the new Fire Station)	\$2,597,867.00	\$2,591,143.00	\$2,717,787.00
2	Police Station Hardening and Addition (All work for the hardening and expansion of the Police Station)	\$4,468,671.00	\$4,488,698.00	\$4,541,745.00
3	Site Work (All site work as defined on the Site Work Drawings)	\$2,009,204.00	\$1,794,978.00	\$2,239,968.00
	TOTAL COST:	\$9,075,742.00	\$8,874,819.00	\$9,499,500.00
	Deductive Alternates:	TOTAL DEDUCT	TOTAL DEDUCT	TOTAL DEDUCT
1	Aluminum Sun Screens, Police Station Delete the aluminum sunshades from the exterior of windows and overhead garage doors.	\$-13,041.00	\$-46,774.00	\$-37,500.00
2	Double thick Architectural Radius Walls Delete the double block wall architectural feature on the SE and NW corners of the existing building and on the SW and NW corners of the new addition at the Police Station.	\$-24,000.00	\$-6,813.00	\$-8,145.00
3	Brick Pavers, Police Station Entry Delete the brick pavers at the main entry and replace with concrete sidewalk scored in a radial pattern.	\$-300.00	\$-0.00	\$-350.00
<p><i>Note: If deductive alternates are deemed to be in the City's best interest, they will be deducted in the order as shown above. Project will be awarded for base bid only, or base bid minus deductive alternates deducted in the numerical order shown above.</i></p>				

Your Topics #4

- Please describe your firm's approach to creating bid documents and working with Purchasing.

Approach

Bidding Documents

- Front End Specification Coordination
 - Division 0 – Contract & City Documents
 - Division 1 – General Conditions by Architect
- Bid Form Coordination
 - Different than an engineering project
 - Alternates – Add or Deduct

Approach

Bidding Documents

- Pre Bid Meeting
 - Mandatory
 - Architect in attendance
 - Meetings Minutes as part of Addendum
- Addendums during the Bid Process
- Schedule of Values with the Bid or within 5 days. This allows comparison to our estimate.

Approach

Construction Administration

- Starts with the General Conditions in the Contract.
- Detailed Site meeting Minutes
- Tracking of submittals, pay requests and all correspondence

Approach

- Site Meetings:
 - ◆ Set a standard weekly time for meetings.
 - ◆ Formal Bi-Weekly Site Meetings
 - ◆ Informal meetings in between “as needed”. But a time is set.
- Detailed Meeting Minutes
- Contract Dates & Amount Tracking



SITE MEETING MINUTES

"Designing Quality Architecture that Builds Lasting Relationships"

PROJECT: CSPS Generator Replacement
OWNER: City of Coral Springs
CONDUCTED BY: Jayson Hull
DATE & TIME: 02-21-14, 8:30am – 10:00am

MEETING MINUTES NO: 15
CONTRACTOR: Megawattage

Original Contract Sum: \$472,032; Project Contingency: \$40,000 Approved Change Order Sum: 0
Notice to Proceed: July 26, 2013
Substantial Completion Date: May 24, 2014
Final Completion Date: June 24, 2014

Present: See attached sign-in sheet

SITE MEETING #1 6-6-13

1.1 Contractor to submit construction schedule by next week.

- a. Construction schedule submitted. CPZ to review.
- b. Megawattage to submit revised schedule.
- c. Megawattage to submit revised schedule.
- d. Schedule submitted and needs to be revised to show phases. Mike will revise by Wednesday of next week.
- e. Revised schedule still pending.
- f. GC has revised schedule, however no printed copies. GC to email revised schedule for review.
- g. GC state he submit a revised schedule to our office today. GC stated the city provided 65KW generator will be installed on Tuesday, November 12th. GC to put a line item in schedule for when generator will be delivered to Westside. Contractor requested Kamm to meet on November 12th at 9am to review wiring to generators. Kamm confirmed meeting for 9am on Tuesday.
- h. CPZ received revised schedule. CPZ to review.
- i. GC to revise schedule per comments at meeting today. CPZ to scan comments and attach to meeting minutes and GC to revise today.
- j. Still pending. GC stated they will send revised schedule today. City stated revised schedule needs to be submitted with all pay requests.
- k. GC submitted schedule with completion date March 30, 2014. CPZ advised GC this does not match contract final completion date. GC stated they will revise schedule to reflect this.
- l. Received schedule this morning. CPZ to review.
- m. CPZ reviewed schedule however shut down scheduled for February 8, 2014 will not happen contractor stated. Contractor to revise schedule with new shutdown date.
- n. Still pending. GC

1.2 Contractor to submit schedule of values by next week.

- a. Still pending
- b. Still pending
- c. Still pending
- d. Pending result of item 1
- e. Pending result of item 1

Project #06603
Page 1 of 5

CPZ ARCHITECTS, INC.

4316 WEST BROWARD BOULEVARD, PLANTATION, FLORIDA 33317
(954) 924-8521, FAX (954) 374-0559
AA #2090683 WWW.CPZARCHITECTS.COM

Original Contract Sum: **\$472,032**; Project Contingency: **\$40,000** Approved Change Order Sum: **0**
Notice to Proceed: July 26, 2013
Substantial Completion Date: May 24, 2014
Final Completion Date: June 24, 2014

Your Topics #3

- Describe your project communication protocol with municipalities or other clients that you serve.

Your Topics #3

- Owner / City
 - ◆ Directly with the Project Manager
 - ◆ Copy Chris P. Zimmerman on ALL email and correspondence
 - ◆ Meetings are regularly scheduled and detailed meeting minutes are completed by the Project Manager.

Your Topics #3

- Drawing Mark Ups
 - ◆ Drawings are redlined during meetings and the scanned as part of the meeting minutes.
 - ◆ Drawing idea sketches are scanned and emailed to owner.
- Go Top Meeting
 - Video Conferencing is used, where are drawings are show via a conference table camera for real time mark ups

Approach

www.cpzarchitects.com

Coordination and Sharing

- Dedicated Project Website
- www.cpzarchitects.com

The screenshot displays the CPZ Architects website. At the top left is the CPZ logo with the text "Architects, Inc." below it. A green navigation bar contains the following links: HOME, SERVICES, SEE OUR PROJECTS, ABOUT US, CONTACT US, and CLIENT LOGIN. Below the navigation bar is the tagline "DESIGNING QUALITY ARCHITECTURE THAT BUILDS LASTING RELATIONSHIPS".

The "RECENT NEWS" section features two articles:

- Town of Davie Fire Station 86**: CPZ Architects has begun design of the Town of Davie's new Fire Station 86 and Community Center Fire...
- Coral Springs Public Safety Complex**: CPZ Architects just received a Notable Mention from Fire Chief Magazine for the design of the Coral Springs...

Below the news section are logos for "Member of The American Institute of Architects" and "Find us on Facebook".

A horizontal row of project categories is shown with corresponding images: POLICE & FIRE, PARKS & REC, HEALTHCARE, MUNICIPAL, PRIVATE CLIENTS, and COMMERCIAL.

The main featured project is "Police & Fire Coral Springs Fire Station 80", shown in a large night-time photograph of the building. A "SEE MORE >>" button is located at the bottom right of this image.

At the bottom right of the website, the contact information for CPZ ARCHITECTS, INC. is provided: 4316 West Broward Blvd., Plantation FL 33317, AA #26000685, Tel: 954-792-8525, Fax: 954-337-0559.

Your Topics #2

- Describe a past project that presented significant challenges. How did your firm overcome those challenges as the project progressed?

Betty Ferguson Community Center

- City of Miami Gardens
- \$12 Million Community Center
- Took over the Project
- Completed on time!
- Within Budget



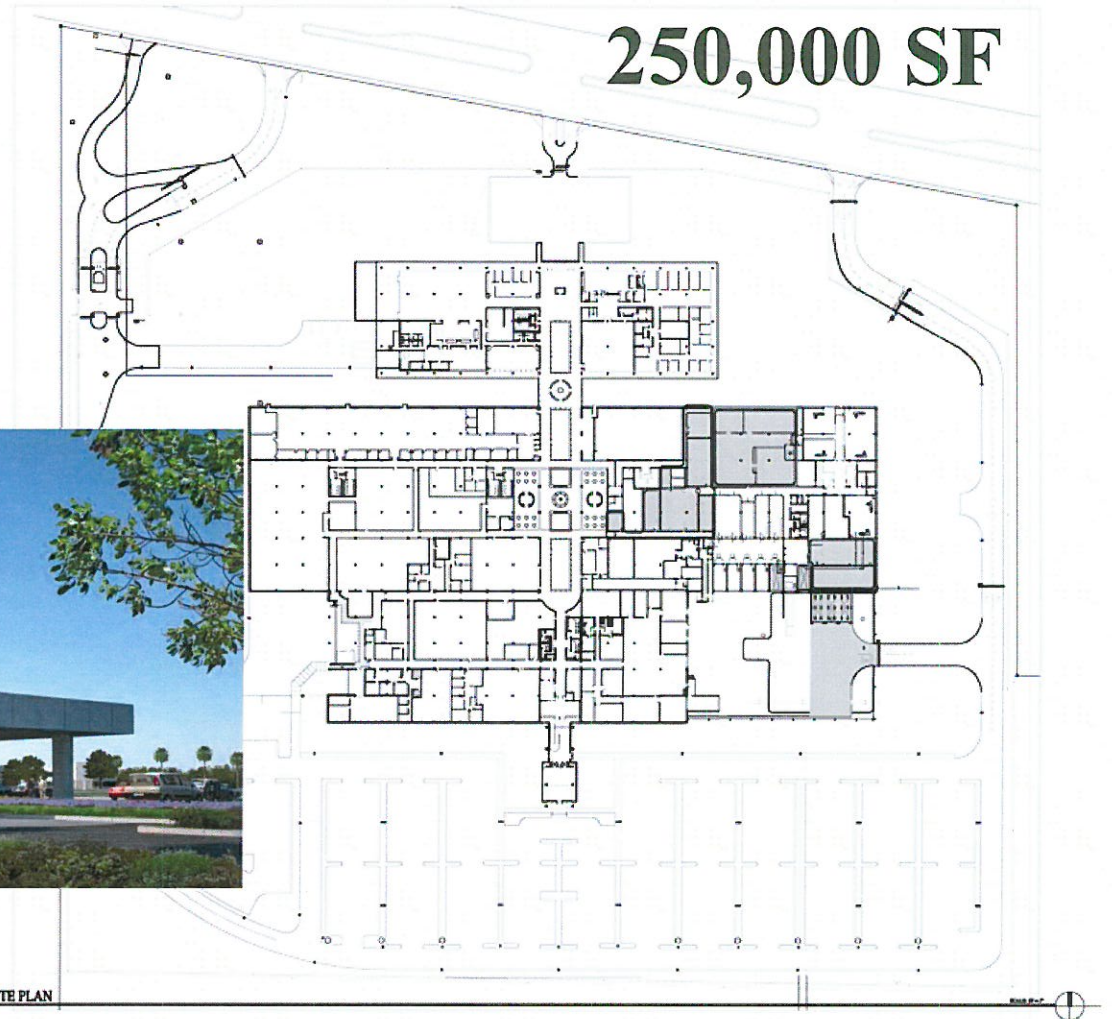
Your Topic #5

- Experience and approach to small scale projects like those listed in the RFQ document.

Federal Reserve Bank

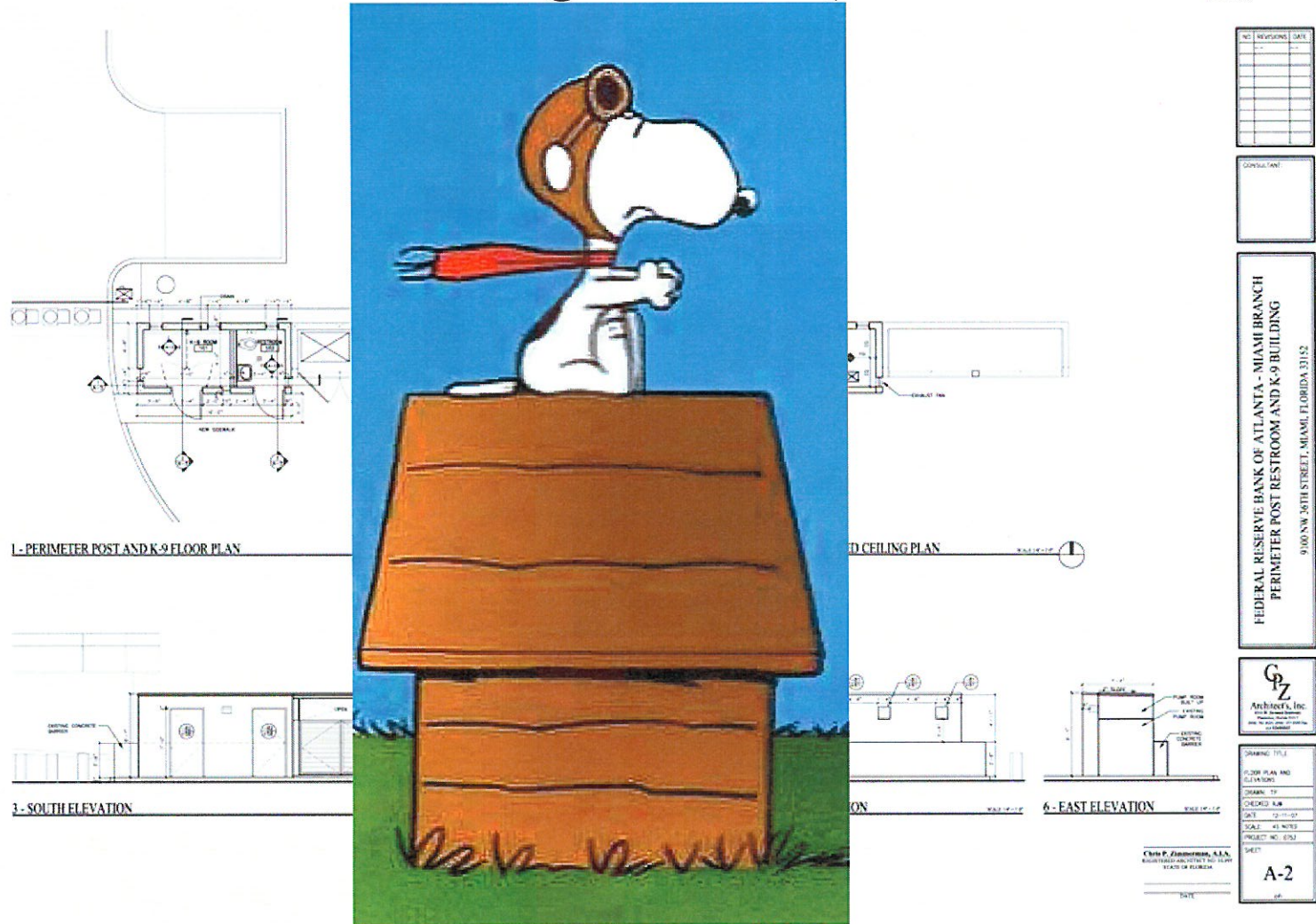
Continuing Services

High Security



Smallest Project

Federal Reserve - Dog House (K-9 Building)



City of Margate CRA

Your Design Project – Existing Conditions



City of Margate CRA

Your Design Project – Option 1



City of Margate CRA

Your
Design 1
Project -
Budget
\$52,089.96

Without
back wall
\$46,929.96

CMS-Construction Management Services, Inc. 10 Fairway Drive, Suite 301 Deerfield Beach, FL 33441 954-481-1611					
MARGATE CRA HEADQUARTERS REMODEL					
SCHEMATICS DESIGN CONSTRUCTION DOCUMENTS CONCEPT 1 COST ESTIMATE December 15, 2015					
PREPARED FOR: CPZ ARCHITECTS, INC.					
MAIN SUMMARY					
DIVISION	DESCRIPTION	QTY	UNIT	UNIT PRICE	COST
01000	GENERAL CONDITIONS	1.00	LS	\$ 3,500.00	\$ 3,500.00
02000	SIDEWALK	600.00	SF	\$ 6.00	\$ 3,600.00
03000	LETTERS/SIGNAGE 6" RAISED ALUMINUM	41.00	EA	\$ 54.00	\$ 2,214.00
03000	LETTERS/SIGNAGE 16" RAISED ALUMINUM	4.00	EA	\$ 162.00	\$ 648.00
03000	LETTERS/SIGNAGE 24" RAISED ALUMINUM	4.00	EA	\$ 285.00	\$ 1,140.00
03000	CITY LOGO PLAQUE	1.00	LS	\$ 2,000.00	\$ 2,000.00
04000	METAL STUD STUCCO WALL	750.00	SF	\$ 16.00	\$ 12,000.00
05000	OVERHANG (NOT INCLUDED)				
06000	PAINT EXTERIOR	3,420.00	SF	\$ 1.50	\$ 5,130.00
07000	NEW LIGHT POLES	2.00	EA	\$ 2,500.00	\$ 5,000.00
08000	SS PANELS WITH LED LIGHTING	4.00	EA	\$ 1,100.00	\$ 4,400.00
33000	LANDSCAPING ALLOWANCE	1.00	LS	\$ 1,000.00	\$ 1,000.00
	SUBTOTAL				\$ 40,632.00
5.00%	G.C. OVERHEAD	0.00			\$ 2,031.60
	SUBTOTAL	0.00			\$ 42,663.60
10.00%	G.C. PROFIT	0.00			\$ 4,266.36
	SUBTOTAL	0.00			\$ 46,929.96
0.00%	BOND	0.00			\$ -
	SUBTOTAL	0.00			\$ 46,929.96
0.00%	CONTINGENCY	0.00			\$ -
	TOTAL PROBABLE CONSTRUCTION COST	0.00			\$ 46,929.96
	SEPARATE PRICE FOR SW WALL	240.00	SF	\$ 21.50	\$ 5,160.00

City of Margate CRA

Your Design Project – Option 2



City of Margate CRA

Your
Design 2
Project –
Budget
\$78,370.22

Without
SW Wall &
Overhang
\$35,954.00

CMS-Construction Management Services, Inc. 10 Fairway Drive, Suite 301 Deerfield Beach, FL 33441 954-481-1611					
MARGATE CRA HEADQUARTERS REMODEL					
SCHEMATICS DESIGN CONSTRUCTION DOCUMENTS CONCEPT 2 COST ESTIMATE December 15, 2015					
PREPARED FOR: CPZ ARCHITECTS, INC.					
MAIN SUMMARY					
DIVISION	DESCRIPTION	QTY	UNIT	UNIT PRICE	COST
01000	GENERAL CONDITIONS	1.00	LS	\$ 3,500.00	\$ 3,500.00
02000	SIDEWALK	600.00	SF	\$ 6.00	\$ 3,600.00
03000	LETTERS/SIGNAGE 6" RAISED ALUMINUM	41.00	EA	\$ 54.00	\$ 2,214.00
03000	LETTERS/SIGNAGE 24" RAISED ALUMINUM	8.00	EA	\$ 285.00	\$ 2,280.00
03000	CITY LOGO PLAQUE	1.00	LS	\$ 2,000.00	\$ 2,000.00
04000	METAL STUD STUCCO WALL	750.00	SF	\$ 16.00	\$ 12,000.00
05000	OVERHANG (NOT INCLUDED)				
06000	PAINT EXTERIOR	3,420.00	SF	\$ 1.50	\$ 5,130.00
07000	NEW LIGHT POLES	2.00	EA	\$ 2,500.00	\$ 5,000.00
33000	LANDSCAPING ALLOWANCE	1.00	LS	\$ 1,000.00	\$ 1,000.00
	SUBTOTAL				\$ 36,724.00
5.00%	G.C. OVERHEAD	0.00			\$ 1,836.20
	SUBTOTAL	0.00			\$ 38,560.20
10.00%	G.C. PROFIT	0.00			\$ 3,856.02
	SUBTOTAL	0.00			\$ 42,416.22
0.00%	BOND	0.00			\$ -
	SUBTOTAL	0.00			\$ 42,416.22
0.00%	CONTINGENCY	0.00			\$ -
	TOTAL PROBABLE CONSTRUCTION COST	0.00			\$ 42,416.22
	SEPARATE PRICE FOR SW WALL	156.00	SF	\$ 21.50	\$ 3,354.00
	SEPARATE PRICE FOR OVERHANG	1,304.00	SF	\$ 25.00	\$ 32,600.00

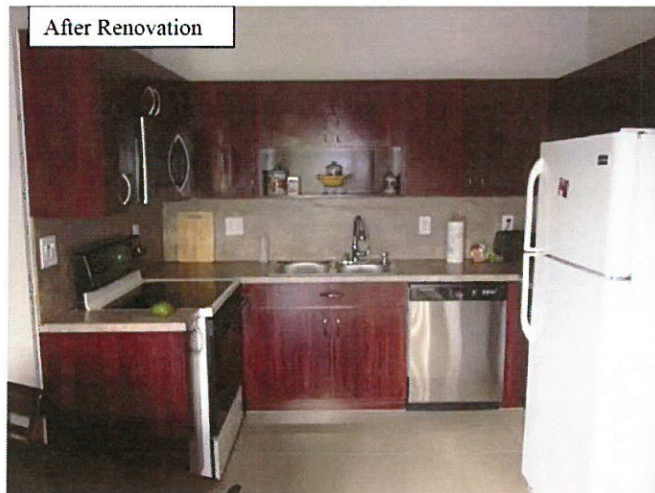
Small Projects

Bus Shelter Lauderdale Lakes



Grant Projects

Sunrise Housing Program



Small Projects



Small Projects



2014 AIA Honor Award Winner

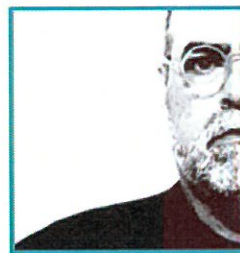
Park Restroom Facility



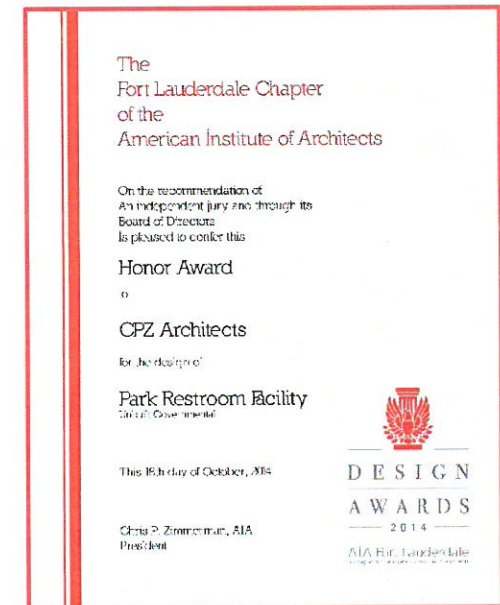
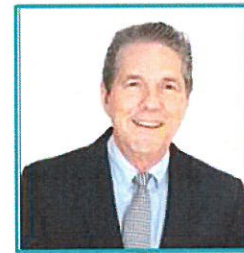
Carl Abbott, AIA



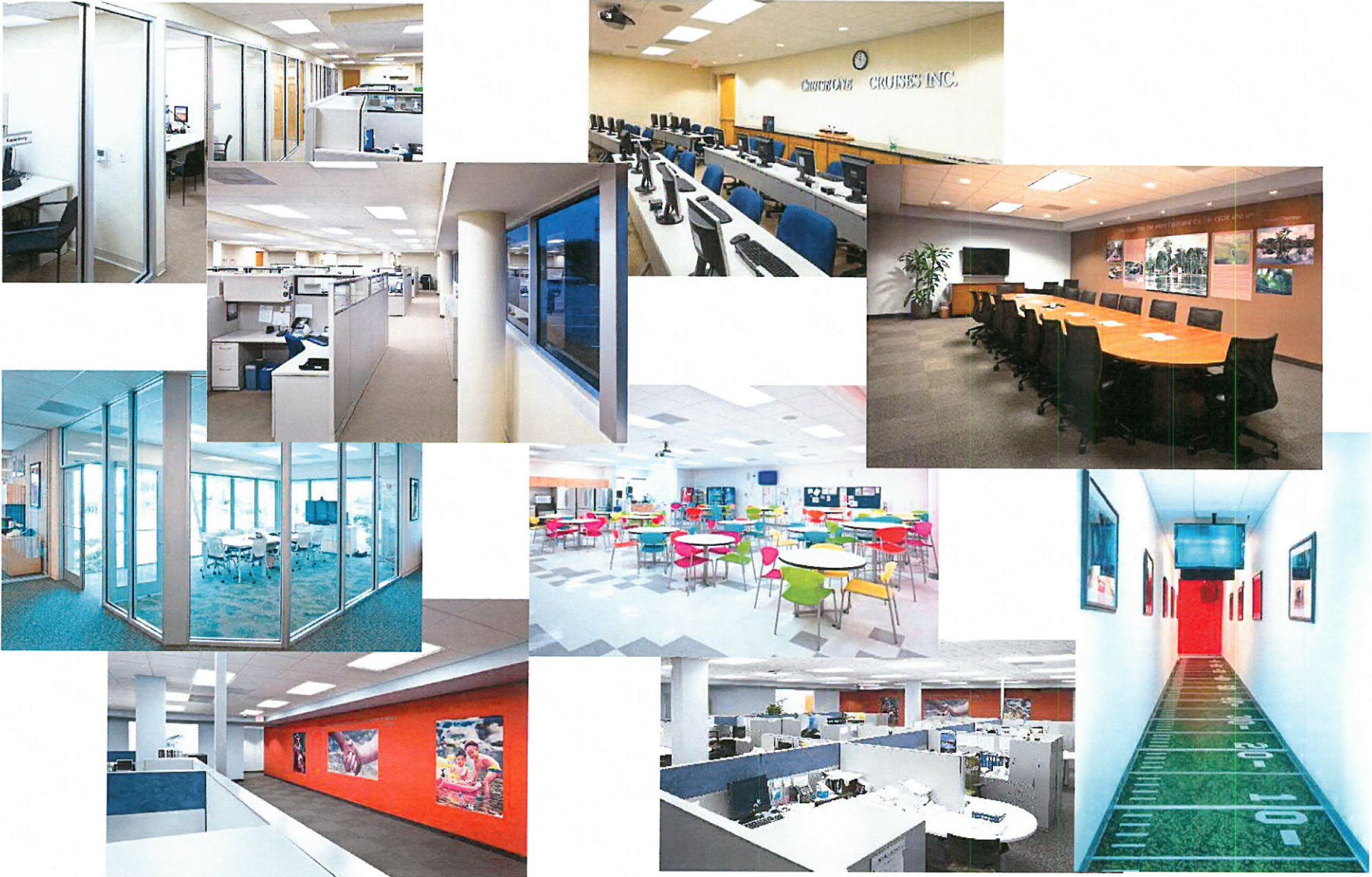
Ronnie Mateu, AIA



Raul Rodriguez, AIA



Office and Meeting Space



Your Projects

- Our Knowledge, Experience and Design
- Southeast Park Concession Building
Park Improvement – Addition
\$350,000
- Sports Complex Dug Out Renovation
Park Improvement – Renovation
\$250,000
- Marina Restroom Facility with Storage
Park Improvement – Addition
\$300,000

Parks Projects - 21

Miramar	Community & Cultural Amphitheater
Coconut Creek	74 th Street Passive Park
	Donaldson Community Park (<i>Chris P. Zimmerman</i>)
Seminole Tribe	Big Cypress Motorcross
Davie	Sunny Lake Bird Sanctuary
	Van Kirk Uplands Park
	Potter Park Gymnasium & Community Center
Hollywood	Washington Park
	Beverly Park
Tamarac	Tephford Park
Broward County	Fern Forest
Wellington	Summerwood Park
	Block Island Park
Lauderdale Lakes	Northgate Park Development
Oakland Park	Jaco Pastorius Park
Fort Lauderdale	Snyder Park
	Joseph C. Carter Park
	Cooley's Landing Park (<i>Chris P. Zimmerman</i>)
	Holiday Park Tennis Center
Miami Gardens	Betty T Ferguson
Pompano Beach	NW Multi-purpose Center

Parks and Community Centers

■ Recommendation Letters



CITY OF HOLLYWOOD, FLORIDA

DEPARTMENT OF PUBLIC WORKS
ENGINEERING AND ARCHITECTURAL SERVICES DIVISION
P. O. Box 229045 • HOLLYWOOD, FL 33022 • PHONE: (954) 921-3900 • FAX: (954) 921-3418



8901 ORANGE DRIVE • DAVIE, FLORIDA 33314
PHONE: (954) 977-1200 • FAX: (954) 977-1200 • WWW.DAVIEFL.GOV



City of Miami Gardens

Oliver Gilbert
Mayor

Lisa C. Davis
Vice Mayor

Rodney Harris
Council Member

Ethelbor Igiodoro, Ph.D.
Council Member

Ellyse Q. Olson
Council Member

Felicia Robinson
Council Member

David Williams Jr.
Council Member

Cinnamon Reardon
City Manager

Ronetta Taylor, MMC
City Clerk

Senjia K. Dickens
City Attorney

March 28, 2014

City of Greenacres
3800 Melrose Lane
Greenacres, FL 33463

To Whom It May Concern:

The City of Miami Gardens Capital Improvement Projects Department has had the pleasure of working with Chris Zimmerman and CPZ Architects, Inc. on continuing services contract projects for more than 5 years.

One of the largest projects was the Betty T. Ferguson Recreation Center. The City retained CPZ Architects for this \$12 million dollar project in 2009. The Recreation Building has an indoor swimming pool, gymnasium, dance studios, fitness center, auditorium, classrooms, computer lab, art studio and restrooms/shower/locker rooms. The site also has an artificial turf football field, a running track, bleachers and a press box.

After the Recreation Building and playfield was completed the City retained CPZ Architects to design a \$750,000 outdoor Amphitheatre with seating for 250 people on the Betty T. Ferguson site. Most recently CPZ Architects was retained to design a decorative fence and gates project with landscaping and irrigation around the perimeter of the 26 acre site.

We were extremely pleased with CPZ Architects' performance on all aspects of the projects for the Community Center building and site and would certainly recommend them for your project.

Sincerely,


Truman DeCaro, RA
Director of Capital Projects



"CPZ Architects successfully completed the project on schedule, within budget and provided quality Construction Management Services."

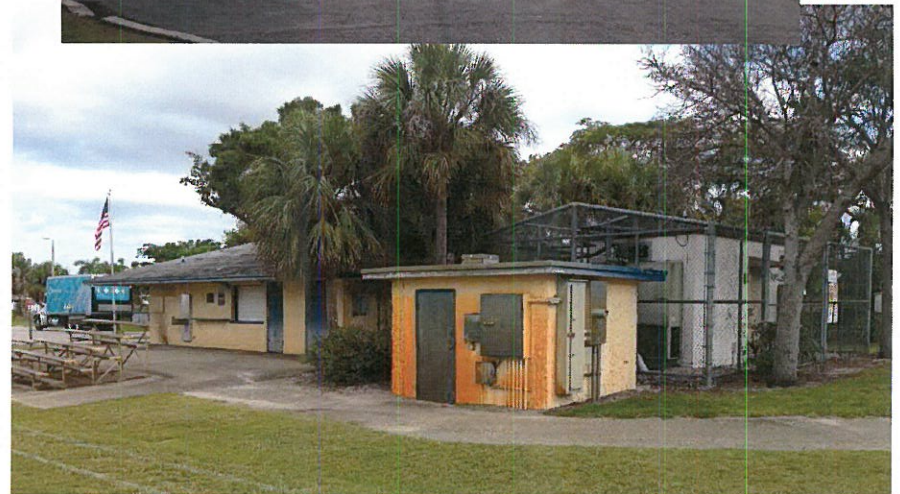
"We were extremely pleased with CPZ Architects performance on all aspects of the projects for the Community Center Building and Site and would certainly recommend them."

"CPZ's attention to details and great responsiveness has assisted in both design and construction administration and has guided us through many successful projects"

Your Projects

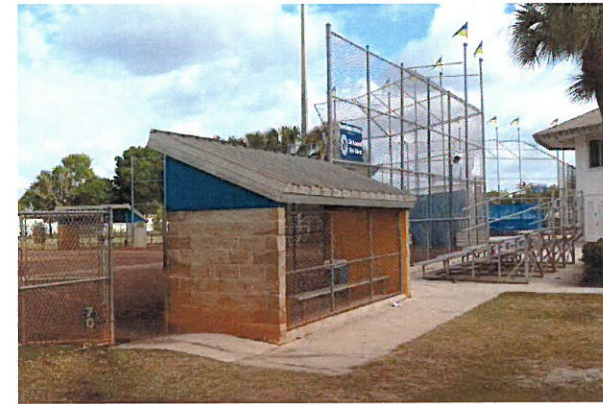
Our Knowledge, Experience and Design

- Southeast Park Concession Building
Park Improvement – Addition
\$350,000



Your Projects

- Sports Complex Dug Out Renovation
Park Improvement – Renovation
\$250,000



Your Projects

- Marina Restroom Facility with Storage
Park Improvement – Addition
\$300,000



Experience – Cooley’s Landing

Chris P. Zimmerman, AIA

Individual Experience

Community Facilities

Sail Boat Bend

Cooley’s Landing and Marina

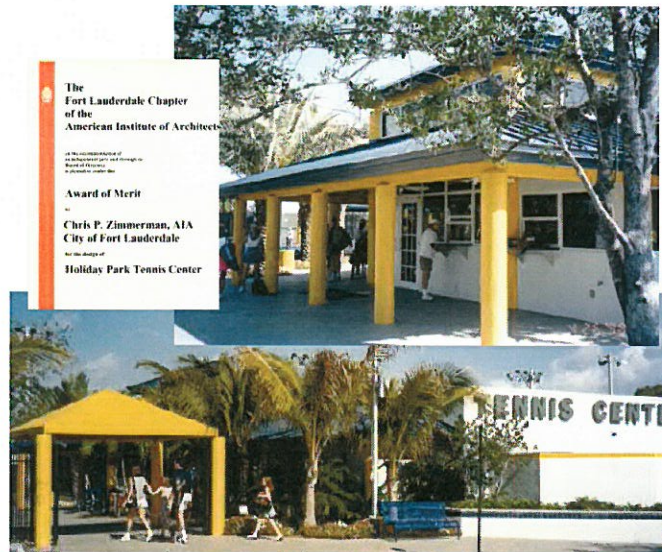


Experience – Holiday Park

Chris P. Zimmerman, AIA

Individual Experience

Community Facilities



Experience – Las Olas Marina

Chris P. Zimmerman, AIA

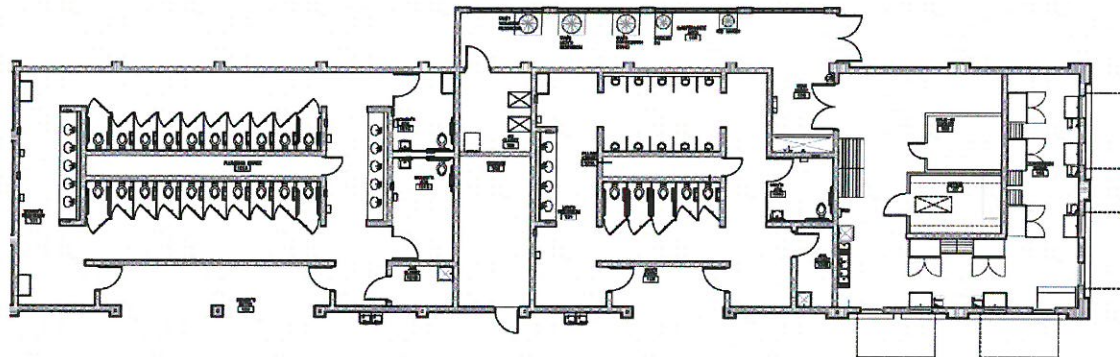
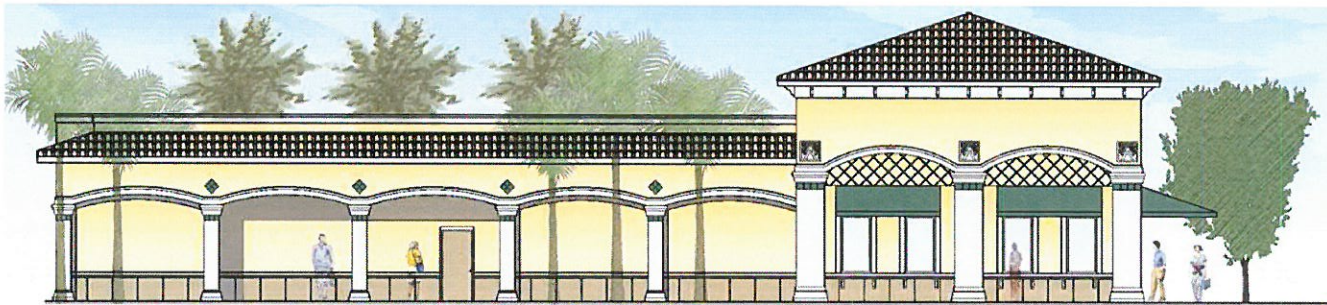
Individual Experience

Community Facilities

Restrooms, Administration and
Concession



Experience



Miramar Amphitheater
Restroom/Concession Building
Miramar, FL

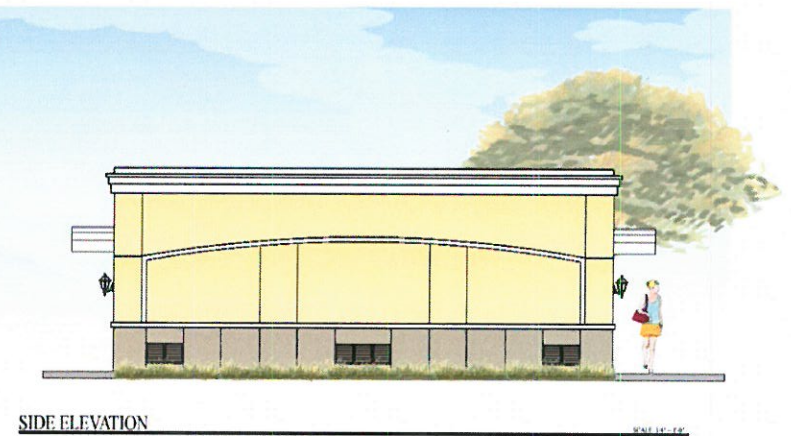
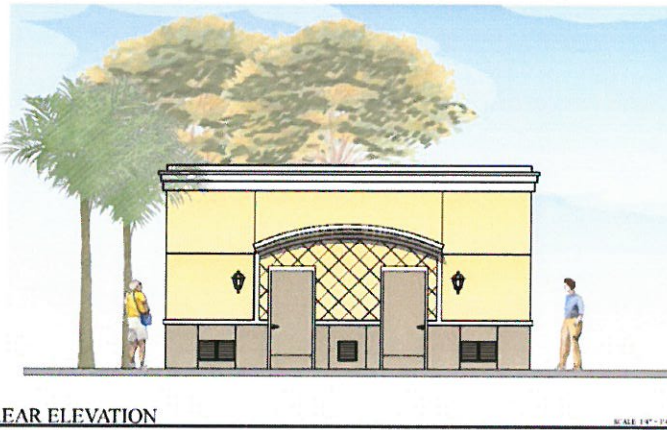
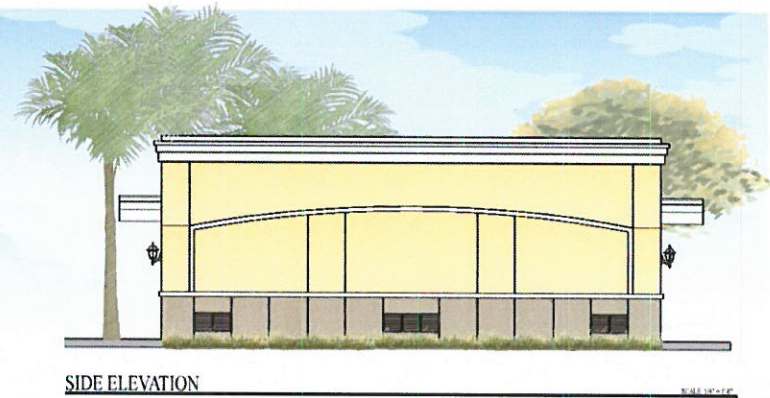
Shirley Branca Amphitheater



Experience

Shirley Branca Park
Restroom Building

Miramar, FL



Experience

Washington Park

Hollywood, FL



Your Projects

■ Margate CRA – David Park



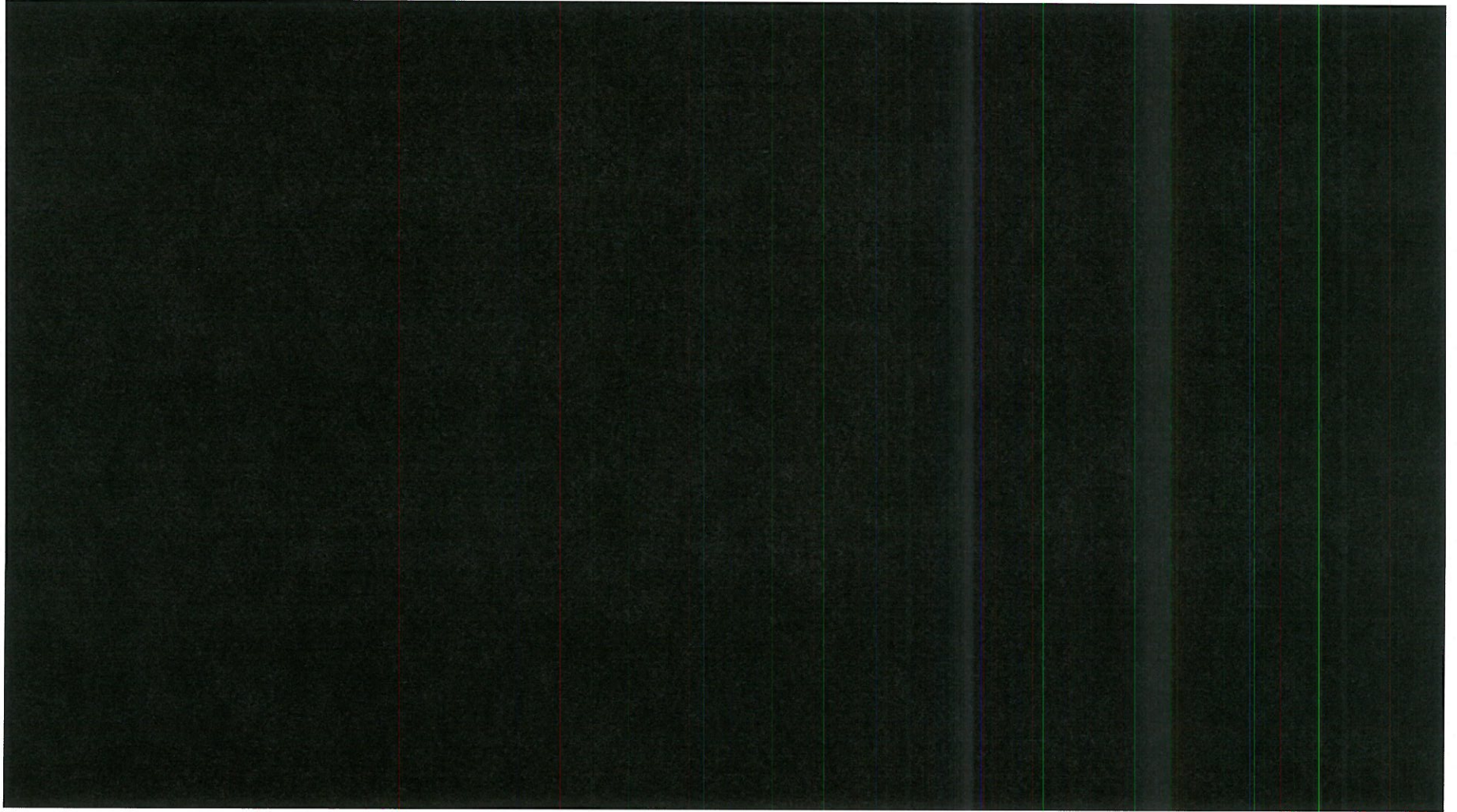
Your Projects

■ Doral North Park



Your Projects

- Doral North Park - Video



CPZ Experience with Government

- City of Sunrise (Continuing Contract, 5 years)
- Town of Davie (Continuing Contract, 12 years)
- City of Coral Springs (Continuing Contract 12 years)
- City of Coconut Creek (Continuing Contract, 2 years)
- City of Miami Gardens (Continuing Contract, 6 years)
- Broward Sheriff's Office (Continuing Contract, 6 years)
- City of Miramar (Continuing Contract, 3 years)
- St. Lucie County (Continuing Contract, 1 year)
- Federal Reserve Bank (Continuing Contract, 6 years)
- Town of Southwest Ranches (Continuing Contract, 2 years)
- ***We have NEVER failed to renew a continuing contract***

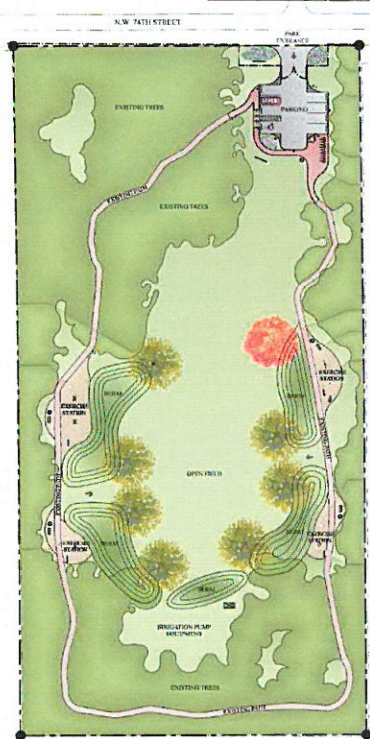
Coconut Creek

■ Coconut Creek

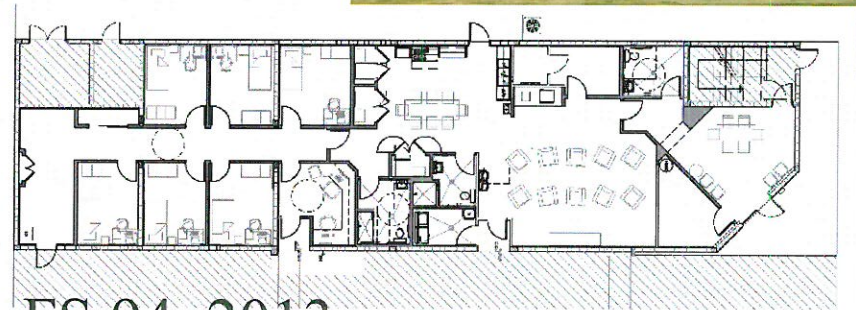
Coconut Creek Community Chris P. Zimmerman, AIA



Donaldson, 2004



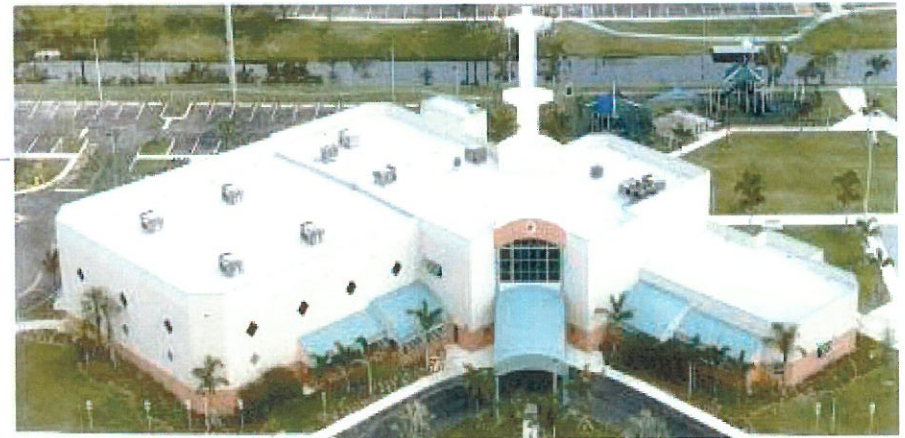
74th Street
Passive Park,
2013



FS 94, 2013

Community Centers

- Coconut Creek Community Center
Chris P. Zimmerman, AIA



COCONUT CREEK
COMMUNITY CENTER

Coconut Creek

■ Continuing the Relationship



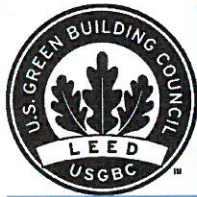
Coral Springs



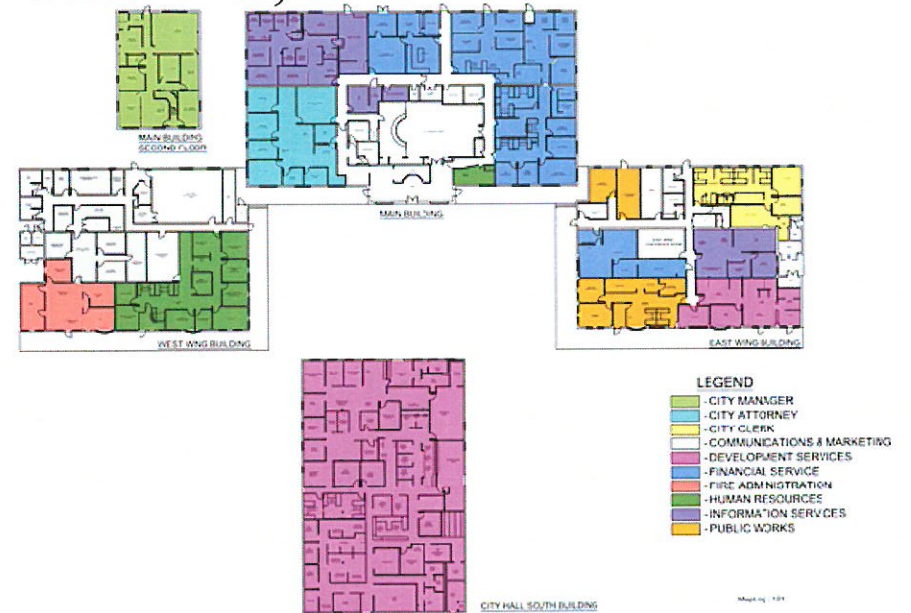
FS 64, 2005



Fine Arts, 2006



FS 80, 2010



City Hall, 2012

Coral Springs



FS 43, 2016

FS 95, 2016



Police Station, 2010

Coral Springs

■ Currently Fire Station 43 and 95

- ◆ Est. \$3,300,000.00
- ◆ Bid \$3,330,000.00
- ◆ Less than 1% Above
- ◆ # bids within 4%

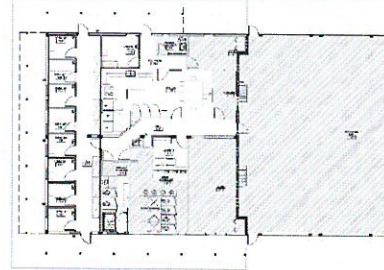


CMS-Construction Management Services, Inc. 10 Fairway Drive, Suite 301 Deerfield Beach, FL 33441 954 481-1611 CMS FILE # 2171 CO 50%			
CORAL SPRINGS FIRE STATION #95 300 CORAL RIDGE DRIVE CORAL SPRINGS, FLORIDA 33071			
CONSTRUCTION DOCUMENTS 50% COST ESTIMATE November 6, 2015			
PREPARED FOR: CPZ ARCHITECTS, INC.			
MAIN SUMMARY			
DIVISION	DESCRIPTION	AMOUNT	% of TOTAL
01000	GENERAL CONDITIONS	\$ 303,270.28	9.19%
02000	EXISTING CONDITIONS	\$ 59,645.95	1.81%
03000	CONCRETE	\$ 254,027.99	7.70%
04000	MASONRY	\$ 201,978.76	6.12%
05000	METALS	\$ 124,511.81	3.77%
06000	WOOD AND PLASTICS	\$ 22,324.70	0.68%
07000	THERMAL / MOISTURE PROTECTION	\$ 165,570.69	5.02%
08000	DOORS AND WINDOWS	\$ 375,018.60	11.36%
09000	FINISHES	\$ 301,591.93	9.14%
10000	SPECIALTIES / SIGNAGE	\$ 58,026.00	1.70%
11000	EQUIPMENT	\$ 75,712.14	2.29%
12000	FURNISHINGS	\$ 11,410.00	0.35%
13000	SPECIAL CONSTRUCTION (N/A)	\$ -	0.00%
14000	CONVEYING SYSTEMS (N/A)	\$ -	0.00%
21000	FIRE	\$ 44,304.10	1.34%
22000	PLUMBING	\$ 159,052.14	4.82%
23000	HVAC	\$ 91,051.38	2.76%
26000	ELECTRICAL	\$ 369,907.10	11.21%
27000	TECHNOLOGY	\$ 23,730.16	0.72%
28000	ELECTRONIC SAFETY & SECURITY	\$ 54,357.31	1.65%
31000	EARTHWORK	\$ 25,882.38	0.78%
32000	EXTERIOR IMPROVEMENTS	\$ 231,986.57	7.03%
33000	SITE UTILITIES	\$ 61,000.00	1.85%
	SUBTOTAL	\$ 3,012,419.99	91.29%
3.00%	G.C. OVERHEAD	\$ 90,372.60	2.74%
	SUBTOTAL	\$ 3,102,792.59	94.03%
5.00%	G.C. PROFIT	\$ 155,139.63	4.70%
	SUBTOTAL	\$ 3,257,932.22	98.73%
1.29%	BOND	\$ 42,027.33	1.27%
	SUBTOTAL	\$ 3,299,959.54	100.00%
0.00%	CONTINGENCY	\$ -	0.00%
	TOTAL PROBABLE CONSTRUCTION COST	\$ 3,299,959.54	100.00%
	POSSIBLE SAVINGS		
	SITE SAVINGS - USE EXISTING ASPHALT PAVING (PARTIAL), BIKE RACK, BENCHES, GRILL, LANDSCAPING (PARTIAL), IRRIGATION (PARTIAL), CURBS (PARTIAL), UTILITIES (PARTIAL) - SEE ATTACHED DETAILS	\$ 154,603.03	AMOUNT EG G.C. OVERHEAD, G.C. PROFIT, BONDS, CONTINGENCY
	BUILDING SAVINGS - REDUCE MASONRY WALLS HEIGHT BY 4' IN DORM AREA, NO ROOF WALKWAY, CHANGE APPRATUS BAY REAR DOORS TO COILING DOORS, DELETE PRECAST CONCRETE BASE CAP & STONE BAND, DELETE LOCKERS USE EXISTING, DELETE TVS USE EXISTING, DELETE RECIRCULATING PUMPS, PROCESS AIR/OXYGEN ALLOWANCES, VIDEO SURVEILLANCE EMPTY CONDUITS - SEE ATTACHED DETAILS	\$ 306,277.41	AMOUNT EG G.C. OVERHEAD, G.C. PROFIT, BONDS, CONTINGENCY
	NET COST	\$ 2,839,079.11	

Town of Davie

Potter Park Community Center

Chris P. Zimmerman, AIA



FS 38, 2013



Public Works, 2005

Fire Station 86, 2016



Storage, 2005



Generators, 2011



Your Criteria

FIRM'S EXPERIENCE IN SOUTH FLORIDA 0 – 25 _____

FIRM'S PERSONNEL QUALIFICATIONS 0 – 30 _____

FIRM'S GOVERNMENTAL EXPERIENCE 0 – 20 _____

FIRM'S APPROACH TO PROJECT MANAGEMENT 0 – 15 _____

FIRM'S RESOURCES, PERSONNEL AVAILABILITY

AND COMMITMENT

0 – 10

TOTAL POINTS _____

*“Designing Quality Architecture
that Builds Lasting Relationships”*

Availability & Commitment

- We have the staff and consultants to support the City and be available.
- Two deep management so the City always has our attention.
- We are currently working with the Margate CRA.
- Our Civil Engineers and Landscape Architects have detailed history with the City of Margate.

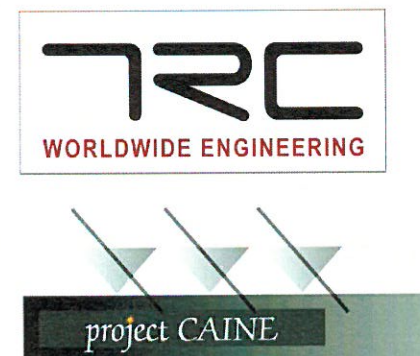
Summary

- Dedicated Project Team
- Team has worked together for many years
- ALL Local Firms, Architect & Consultants
- SERVICE - Immediate Response Capabilities
- Meet Client's Needs
- Similar Projects – Community & Government
- Variety of Project Experiences
- Contract Document Coordination
- On Time & Within Budget
- Construction Management

We want to work with the City of Margate!

*“Designing Quality Architecture
that Builds Lasting Relationships”*

Thank You



City of Fort Lauderdale Fire Station #8 Design Schedule

