

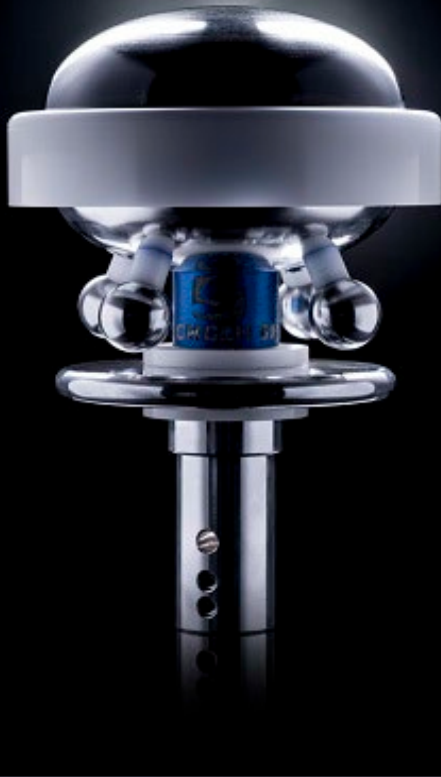
EMP | DEFENSE



The Avanti Company

Jerry Prokes
(305) 804-5940
jprokes@avanticompany.com

Product Specifications



The CMCE120 is the most advanced lightning protection device on the market and positioned to be the new standard in global lightning protection.

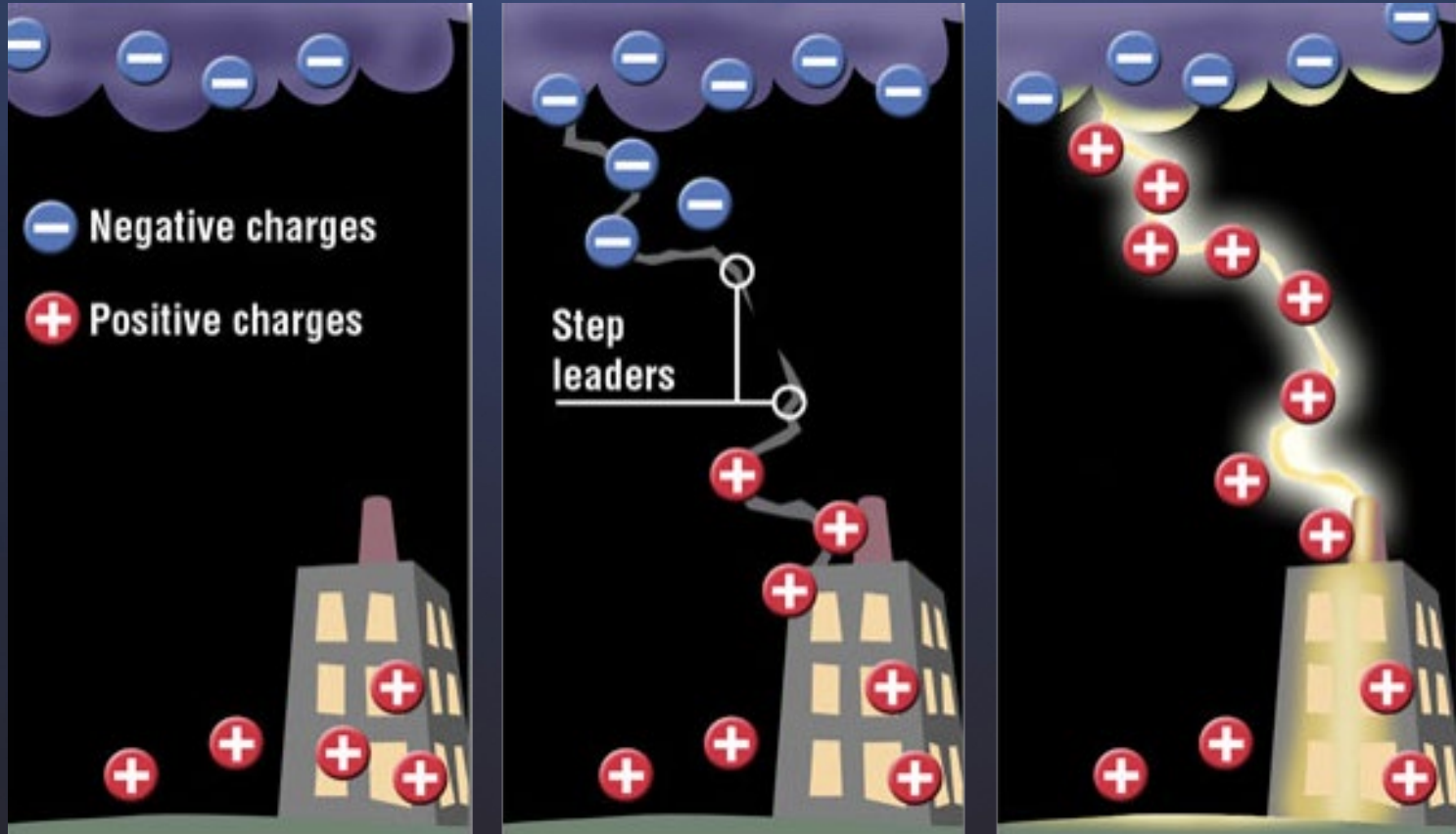
The CMCE120 continuously balances the protected areas electromagnetic field — draining excess current harmlessly into the ground — eliminating upward streamers — preventing the development of lightning within 393 ft radius.



The Avanti Company

Jerry Prokes
(305) 804-5940
jprokes@avanticompany.com

The Development of Lightning



The Avanti Company

Jerry Prokes
(305) 804-5940
jprokes@avanticompany.com

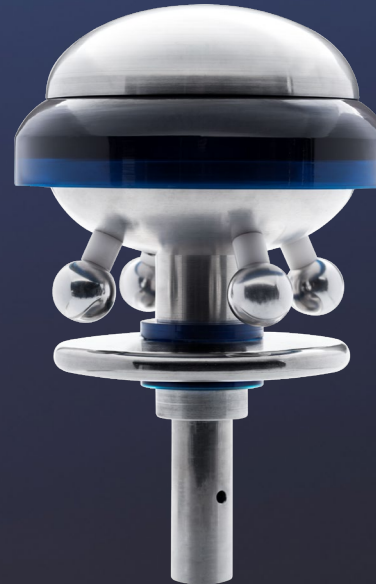
Technology Comparison

Collection vs. Suppression



Air Terminal

- Charges concentrate at points
- Makes itself a target
- Encourages the development of lightning
- Coverage: Requires multiple devices



CMCE

- Excess charges are drained to Earth
- Maintains balanced electromagnetic field
- Eliminates the development of lightning
- Coverage: 393 ft R



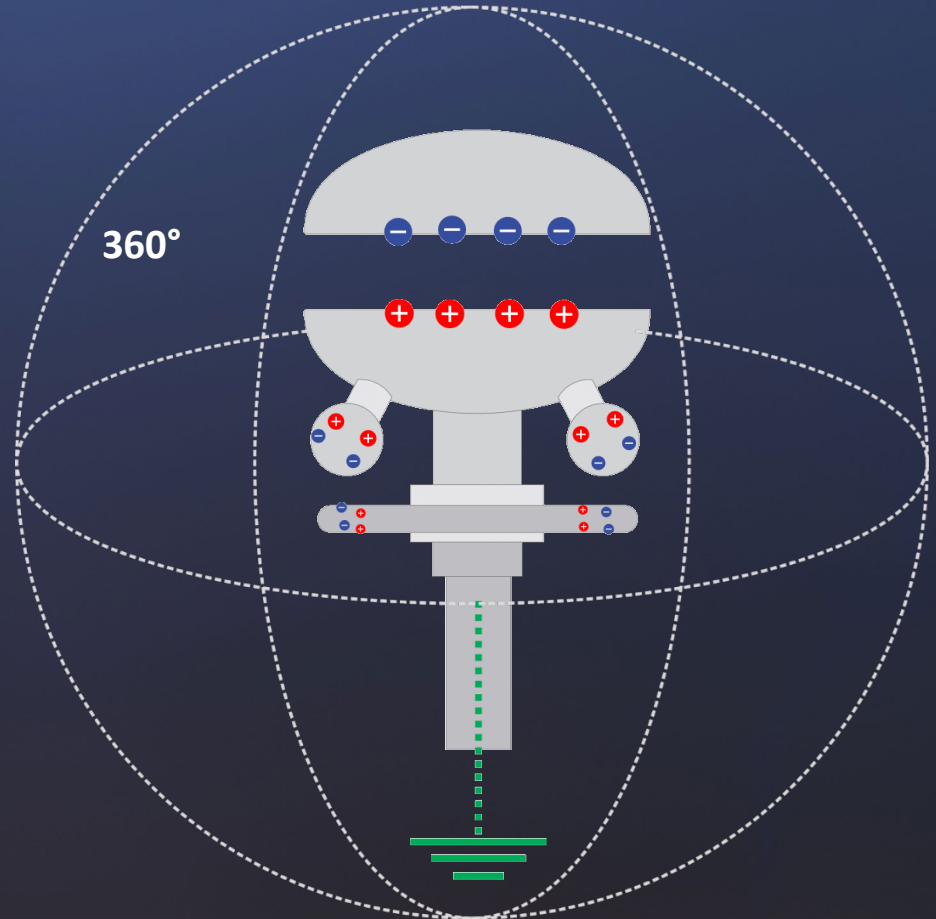
The Avanti Company

Jerry Prokes
(305) 804-5940
jprokes@avanticompany.com

Operating Principles

The CMCE absorbs charges from all directions: 360°

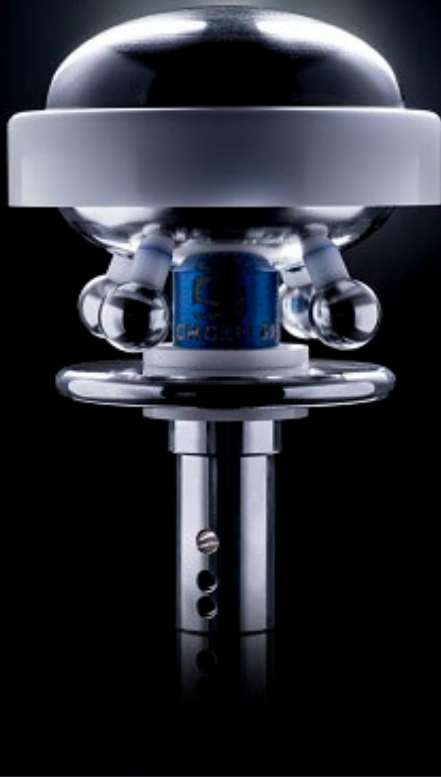
1. Absorbs charges that appear in the surrounding electromagnetic field,
2. Arranges charges internally based on their natural form,
3. Creates a controlled flow of leakage current in harmless milliamperes – between 50mA and 350mA in fair weather and 700mA to 1.8A in storm phase – through the ground wire to the earth.



The Avanti Company

Jerry Prokes
(305) 804-5940
jprokes@avanticompany.com

Product Specifications



DEVICE	6-Modified Capacitors
COVERAGE	393.7 ft (120 m) Radius
DISSIPATION	Up to 900 KV/Microsecond
DIMENSIONS	14.5h x 9.5w inches
WEIGHT	17.5 lbs. (7.983 kg)
POWER	No power required



The Avanti Company

Jerry Prokes
(305) 804-5940
jprokes@avanticompany.com

Installation Examples



The Avanti Company

Jerry Prokes
(305) 804-5940
jprokes@avanticompany.com

Project Overview | Industrial

Dearborn Industrial Generation Facility

Background

- Plant Services Ford Motor & AK Steel Plants
- 2016 – Lightning Strike to Plant Substation
- Damages
 - Repairs
 - Preventative Maintenance
 - Purchased power to maintain service levels



The Avanti Company

Jerry Prokes
(305) 804-5940
jprokes@avanticompany.com

Project Overview | DIG

Dearborn Industrial Generation Facility



2016 Lightning Strike Area

Dearborn Industrial Generation



The Avanti Company

Jerry Prokes
(305) 804-5940
jprokes@avanticompany.com

Project Overview | Industrial

Dearborn Industrial Generation Facility



The Avanti Company

Jerry Prokes
(305) 804-5940
jprokes@avanticompany.com

Project Overview | Industrial

Dearborn Industrial Generation Facility



The Avanti Company

Jerry Prokes
(305) 804-5940
jprokes@avanticompany.com

Project Overview | Industrial

Dearborn Industrial Generation Facility

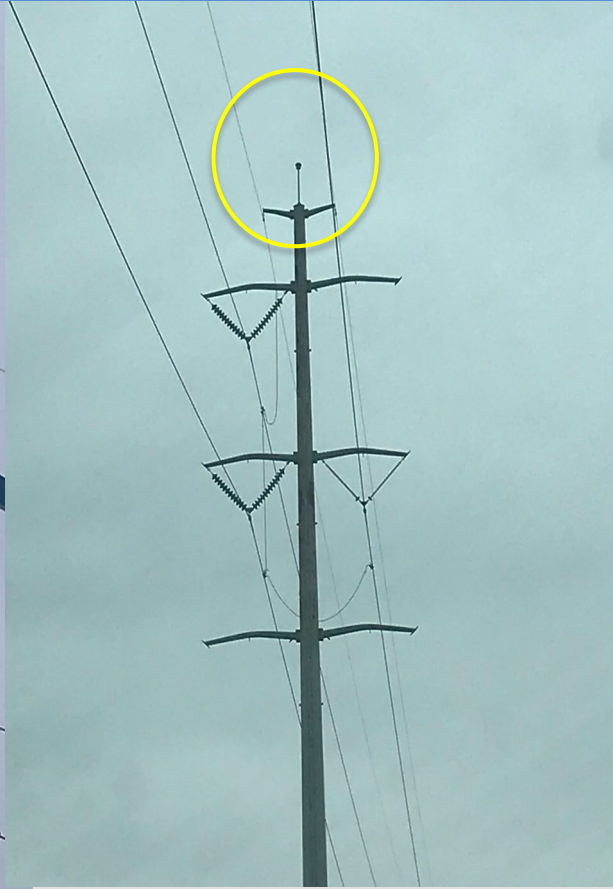


The Avanti Company

Jerry Prokes
(305) 804-5940
jprokes@avanticompany.com

Project Overview | DIG

Dearborn Industrial Generation Facility



The Avanti Company

Jerry Prokes
(305) 804-5940
jprokes@avanticompany.com

Project Overview

Crown Castle Tower Project – St. Augustine, FL

Background

- Largest tower ownership company in US (40,000)
- Site struck numerous times – annually
 - 211' elevation (FAA Limit)
 - Damage to generators and tower equipment
- 2019 – Proof of Concept “Pilot Project”
 - 12-month duration
 - no strikes – product approval for Crown Castle



The Avanti Company

Jerry Prokes
(305) 804-5940
jprokes@avanticompany.com

Installations

Crown Castle Tower Project – St. Augustine, FL



The Avanti Company

Jerry Prokes
(305) 804-5940
jprokes@avanticompany.com

Pending Installation

Cape Canaveral – Cape Canaveral, FL

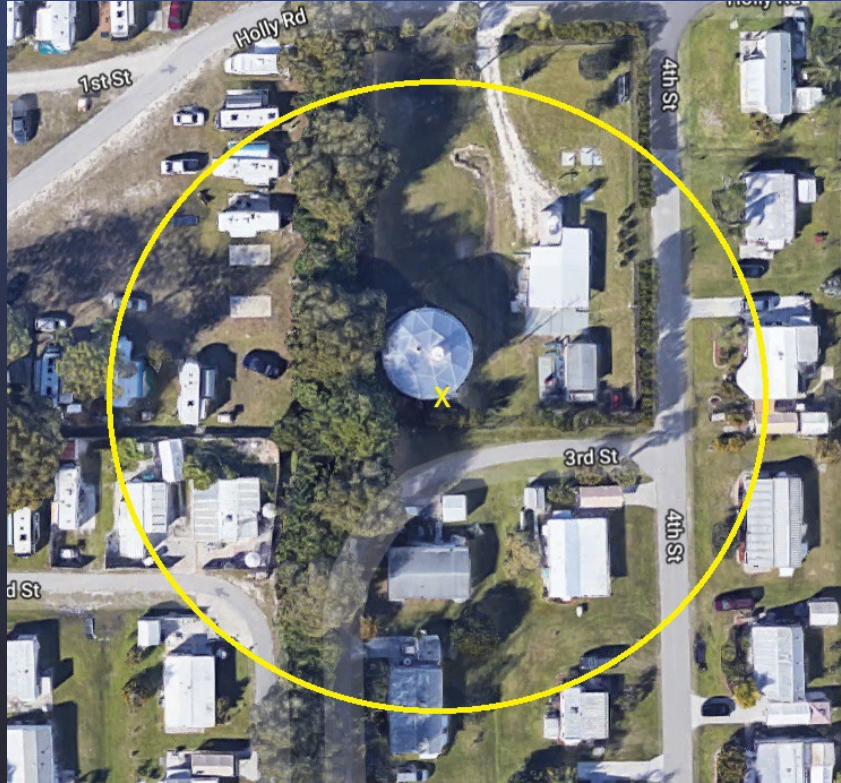


The Avanti Company

Jerry Prokes
(305) 804-5940
jprokes@avanticompany.com

Installations

Citrus Park Utility – Bonita Springs, FL

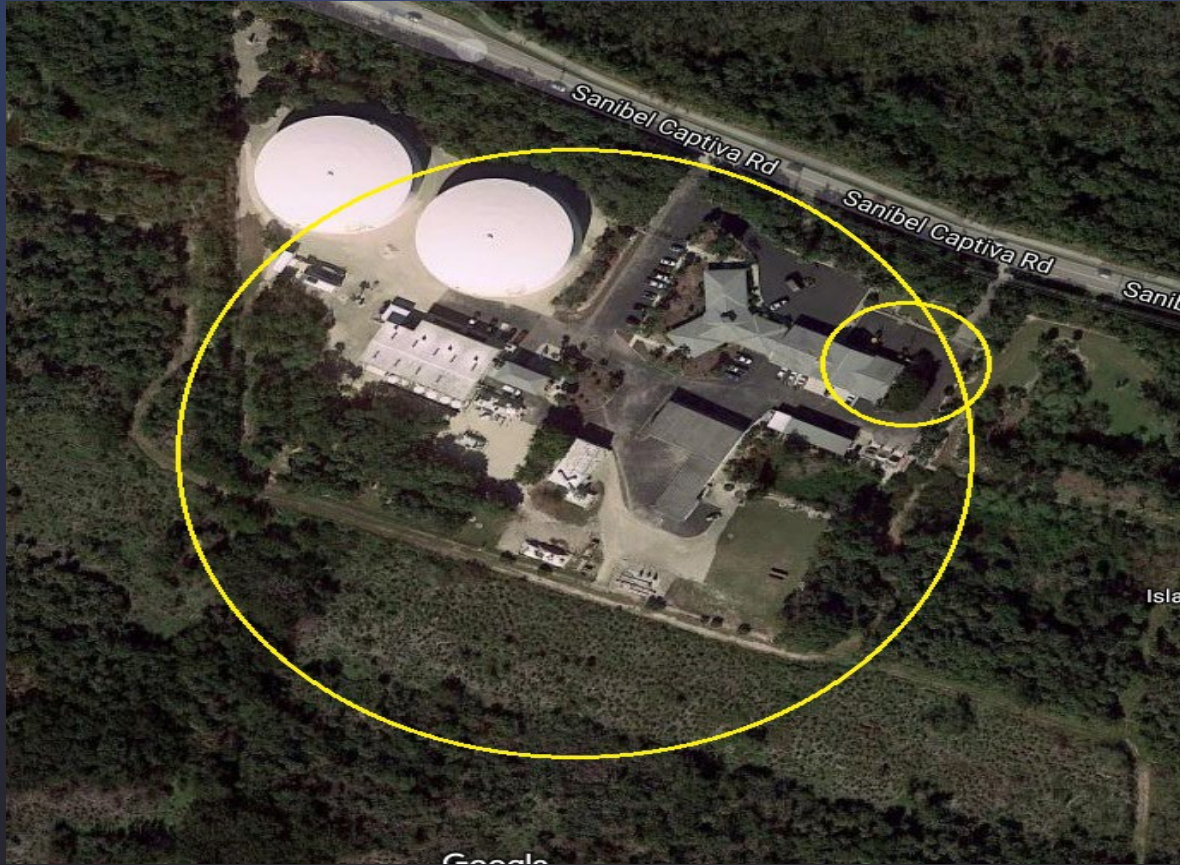


The Avanti Company

Jerry Prokes
(305) 804-5940
jprokes@avanticompany.com

Installations

Island Water Association – Sanibel, FL



The Avanti Company

Jerry Prokes
(305) 804-5940
jprokes@avanticompany.com

Installations

Ozark Mountain Regional PWA



The Avanti Company

Jerry Prokes
(305) 804-5940
jprokes@avanticompany.com

Installations

Sarasota County EOC

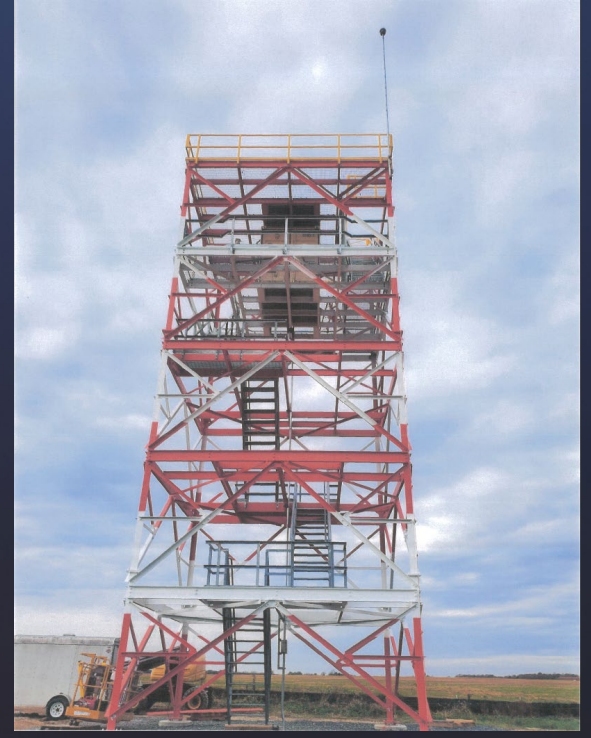


The Avanti Company

Jerry Prokes
(305) 804-5940
jprokes@avanticompany.com

Installations

U.S. Air Force



The Avanti Company

Jerry Prokes
(305) 804-5940
jprokes@avanticompany.com

Installations

Manatee County, FL



Manatee County installs lightning protection system on lifeguard towers

By Kimberly Kuizon | Published September 14, 2020 | Manatee County | FOX 13 News

Chief shows off lightning suppressors

Kimberly Kuizon reports

BRADENTON, Fla. - They're hard to notice at first glance. But the circular objects at the very top of Manatee County's lifeguard stands could be called lifesavers.

"We did something that wasn't on a beach anywhere else in the state of Florida," proclaimed Chief Joe Westerman.



The Avanti Company

Jerry Prokes
(305) 804-5940
jprokes@avanticompany.com

Installations

Huntsville International Airport (HSV) CMCE-120UL



The Avanti Company

Jerry Prokes
(305) 804-5940
jprokes@avanticompany.com

Installations

State Trust Capital Building – Boca Raton, FL



The Avanti Company

Jerry Prokes
(305) 804-5940
jprokes@avanticompany.com

Installations

Saltwater Disposal Facilities – North Dakota



The Avanti Company

Jerry Prokes
(305) 804-5940
jprokes@avanticompany.com

Installations

Falcon's Fury – Busch Gardens Tampa



The Avanti Company

Jerry Prokes
(305) 804-5940
jprokes@avanticompany.com

Installations

Riverhaus – Covington, KY



The Avanti Company

Jerry Prokes
(305) 804-5940
jprokes@avanticompany.com

Installations

Crane Installation – Port of Tampa



The Avanti Company

Jerry Prokes
(305) 804-5940
jprokes@avanticompany.com

Installations

USTA National Campus – Orlando, FL

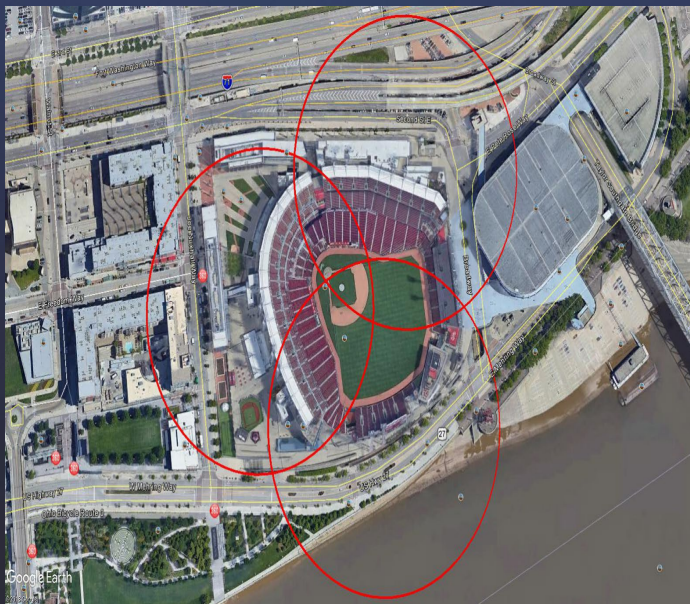


The Avanti Company

Jerry Prokes
(305) 804-5940
jprokes@avanticompany.com

Installations

Great American Ball Park – Cincinnati, OH



The Avanti Company

Jerry Prokes
(305) 804-5940
jprokes@avanticompany.com

Installations

Residential Installation Example – Deer Lodge, MT



The Avanti Company

Jerry Prokes
(305) 804-5940
jprokes@avanticompany.com

Installations

Marine Installation Examples



The Avanti Company

Jerry Prokes
(305) 804-5940
jprokes@avanticompany.com

EMP | DEFENSE

Thank you!



The Avanti Company

Jerry Prokes
(305) 804-5940
jprokes@avanticompany.com