

**WATER SYSTEMS  
BILL OF SALE**

KNOW ALL MEN BY THESE PRESENTS that ALLIANCE XVI, LLC., located at 4973 SW 75 AVE MIAMI, FL 33155 ("Grantor"), for and in consideration of the sum of Ten Dollars (\$10.00) and other good and valuable consideration to it paid by the CITY OF MARGATE, FLORIDA, a municipal corporation ("Grantee"), the receipt of which is hereby acknowledged, has granted, bargained, sold, transferred, set over and delivered, and by these presents does grant, bargain, sell, transfer, set over, and deliver unto Grantee, its successors and assigns, all those certain goods and chattels described as follows:

Water systems, owned by Grantor, being the potable water lines water mains, hydrants, valves, fire lines and related facilities constructed within the right-of-way and/or property of ALLIANCE XVI, LLC., which system is more completely described in Exhibit "A" and as shown on the water main as-built drawing provided in Exhibit "B." Nothing herein shall vacate easements previously conveyed on this property.

And the Grantor, for itself and its successors, hereby covenants to and with the Grantee, its successors and assigns, that it is the lawful owner of the said goods and chattels, that they are free from all liens and encumbrances, that it has good right to sell the same as aforesaid, and that it will warrant and defend the same against the lawful claims and demands of all persons whomsoever.

Signed in the presence of:

Laura Cros Hernandez  
Witness

LAURA CROS HERNANDEZ  
Print Name of Witness

4973 S.W. 75<sup>th</sup> AVENUE, MIAMI, FL 33155  
Address of Witness

By: Robert Cambo

Grantor: ALLIANCE XVI, LLC.

4973 SW 75 AVE MIAMI, FL 33155  
Address of Grantor

By: \_\_\_\_\_

Grantee: \_\_\_\_\_, Mayor

By: \_\_\_\_\_

Grantee: \_\_\_\_\_, City Manager

State of Florida,  
County of MIAMI-DADE

The foregoing instrument was acknowledged before me by means of  physical presence or  online notarization, this 9<sup>th</sup> day of OCTOBER, 2024 (year), by ROBERT CAMBO (name of person acknowledging), and is personally known to me or has produced identification.

My Commission Expires

4/20/26



**LAURA CROS HERNANDEZ**  
Notary Public  
State of Florida  
Comm# HH255531  
Expires 4/20/2026

Laura Cros Hernandez  
NOTARY PUBLIC, STATE OF FLORIDA

# Exhibit A



## Bill of Sale for Water Scope

8" DIP Water Main	699	LF	\$88.00	\$61,512.00
8" GV	5	EA	\$2,333.00	\$11,665.00
4x4 Tee	1	EA	\$475.00	\$475.00
4" GV	1	EA	\$1,150.00	\$1,150.00
8"x4" TEE	1	EA	\$595.00	\$595.00
2" Saddle	2	EA	\$225.00	\$450.00
8"x8" Tee	1	EA	\$705.00	\$705.00
12" GV	2	EA	\$9,224.00	\$18,448.00
12" DIP	5	LF	\$400.00	\$2,000.00
12"x8" Reducer	2	EA	\$2,947.00	\$5,894.00
Restrains on 8"	14	EA	\$235.00	\$3,290.00
8" 45 bend	14	EA	\$1,250.00	\$17,500.00
8" 90 Bend	1	EA	\$1,300.00	\$1,300.00
12" 90 Bend	1	EA	\$2,435.00	\$2,435.00
8" Cross	1	EA	\$8,850.00	\$8,850.00
12"x8" Tee	1	EA	\$1,200.00	\$1,200.00
4" 90 Bend	1	EA	\$1,150.00	\$1,150.00

**Total** \$138,619.00

American Engineering & Development Corp.

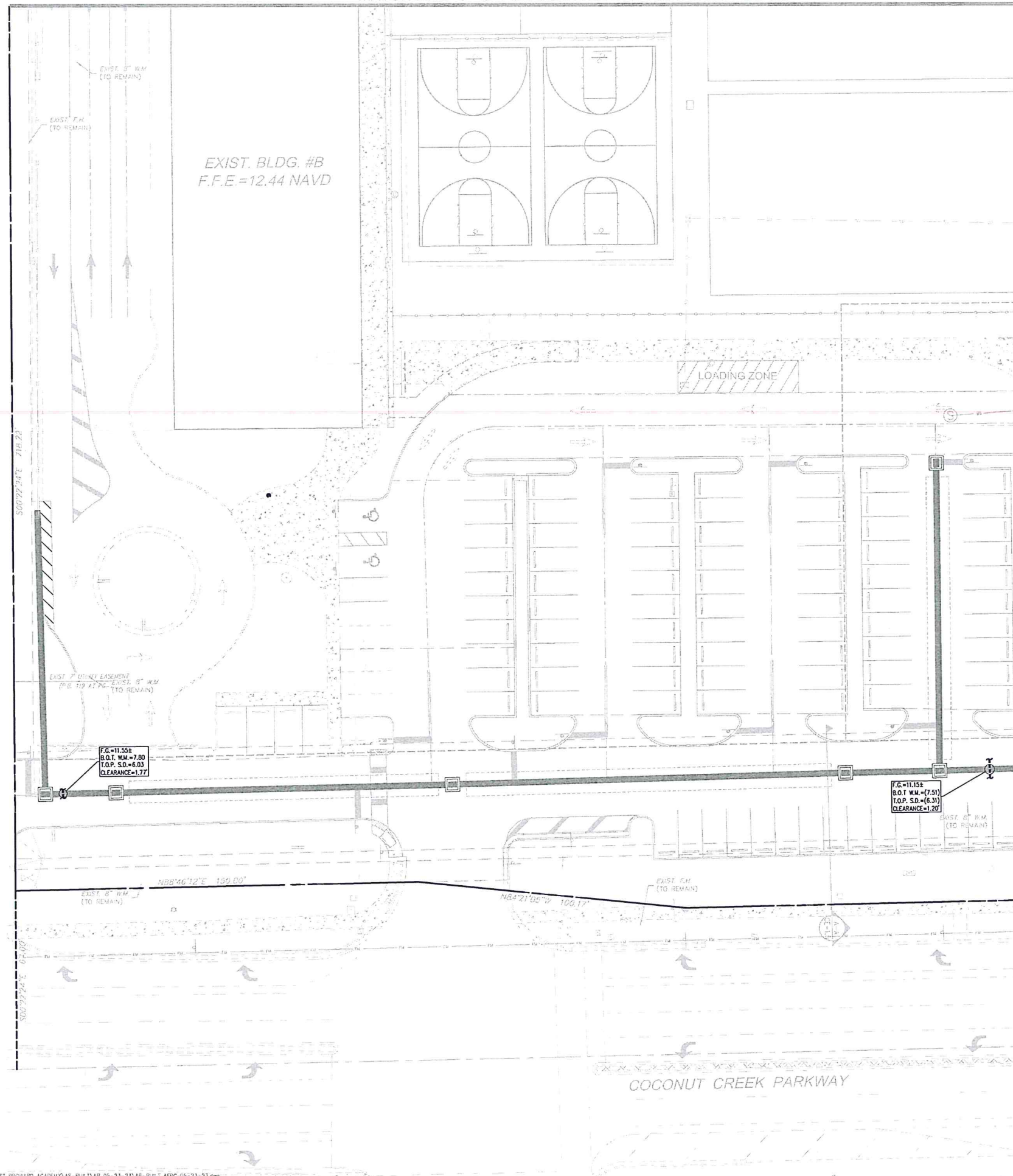
By:  \_\_\_\_\_

Name: Andres Munoz

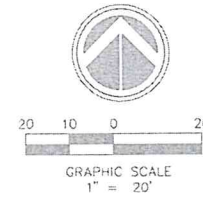
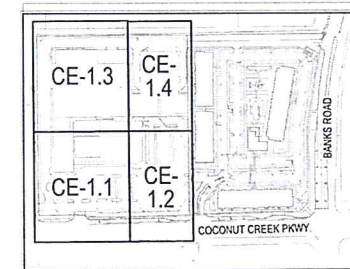
Title: Project Manager

**EXHIBIT B**  
**AS-BUILT DRAWINGS**

MATCH LINE C - C FOR CONTINUATION SEE SHEET CE-3.3



RECORD DRAWING



KEYMAP

**SURVEYOR'S LEGEND**

(5.85)	- DENOTES AS-BUILT ELEVATION
F.G.	- FINISHED GRADE ELEVATION
T.O.N.	- TOP OF NUT
T.O.P.	- TOP OF PIPE
B.O.T.	- BOTTOM OF PIPE
I.M.	- PIPE INVERT ELEVATION
R.E.	- RIM ELEVATION
G.E.	- GROUND ELEVATION
G.V.	- GATE VALVE
W.M.	- WATER MAIN PIPE
S.D.	- STORM DRAINAGE PIPE
S.S.	- SANITARY SEWER PIPE
EX.	- EXISTING
DSSC	- DOUBLE STRAP SERVICE CLAMP
CORP.	- CORPORATION STOP VALVE
RPZ	- REDUCED PRESSURE ZONE VALVE

**WATER & SEWER LEGEND**

—	PROPERTY LINE	—	EXISTING OR FUTURE UTILITIES
—	RIGHT-OF-WAY LINE	—	DRAINAGE STRUCTURE w/PIPE
—	DOUBLE WATER METER SERVICE	—	D.L.P. PIPE
—	SINGLE WATER METER SERVICE	—	EXIST. UTILITY DEMOLITION
—	LENGTH, SIZE & TYPE OF WATER MAIN	R.E.	RIM ELEVATION
—	FIRE HYDRANT, GATE VALVE & TEE ASSEMBLY	I.E.	INVERT ELEVATION
—	PROPOSED GATE VALVE	—	MANHOLE DESIGNATION
—	PROPOSED CHECK VALVE	—	LENGTH & SLOPE OF PIPE
—	BACTERIOLOGICAL SAMPLING POINT	—	DOUBLE SEWER LATERAL
—	PROP LIGHT POLE	—	SINGLE SEWER LATERAL
		—	CLEAN OUT TO GRADE

NOTES:

- THIS SURVEY IS NOT VALID WITHOUT THE ORIGINAL SIGNATURE AND SEAL OF THE FLORIDA LICENSED SURVEYOR AND MAPPER.
- ELEVATIONS SHOWN HEREON ARE RELATIVE TO NORTH AMERICAN VERTICAL DATUM (N.A.V.D.) OF 1988
- THIS IS NOT A BOUNDARY SURVEY.
- (7.92) DENOTES "RECORD" ELEVATIONS.
- BENCHMARK No.1442  
COUNTY: BROWARD  
"SQUARE" CUT ON NORTHEAST CORNER OF CONCRETE SLAB FOR SOUTHERN BELL TELEPHONE VAULT, 25' SOUTH OF CENTERLINE OF COCONUT PARKWAY AND 30' EAST OF CENTERLINE OF BANKS ROAD.  
ELEVATION = 11.13' (N.A.V.D.88)

**PEDRO F. MUNOZ**  
PROFESSIONAL SURVEYOR AND MAPPER  
11765 WEST OKEECHOBEE ROAD  
HIALEAH GARDENS, FLORIDA 33018  
(408)825-9800

**Pedro F. Munoz**  
Digitally signed by Pedro F. Munoz  
Date: 2024.06.25 16:06:56 -0400

This item has been digitally signed and sealed by Pedro F. Munoz, Professional Surveyor and Mapper, on the date adjacent to the seal using a SHA authentication code.  
Printed copies of this document are not considered signed and sealed and the SHA authentication code must be verified on any electronic copies.



06-25-2024

4577 N.W. Hill Road, Suite 105  
Ocala, Florida 34474  
www.sun-tech.com  
Certificate of Auth. #70747-B-7019  
Phone (352) 777-3123  
Fax (352) 777-3114

**Sun-Tech Engineering, Inc.**  
Engineers • Planners • Surveyors



REVISIONS

NO.	DATE	DESCRIPTION
1	06/25/23	ADDED EXIST. F.M. INFO.

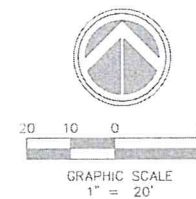
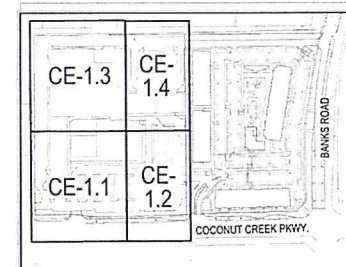
WEST BROWARD ACADEMY  
FLORIDA  
MARGATE  
WATER AS-BUILT PLAN

DATE: SEP 2021  
SCALE: 1" = 20'  
DESIGNED BY: C.R.L.  
DRAWN BY: A.S.  
JOB #: 22-4149

SHEET No.  
CE-3.1

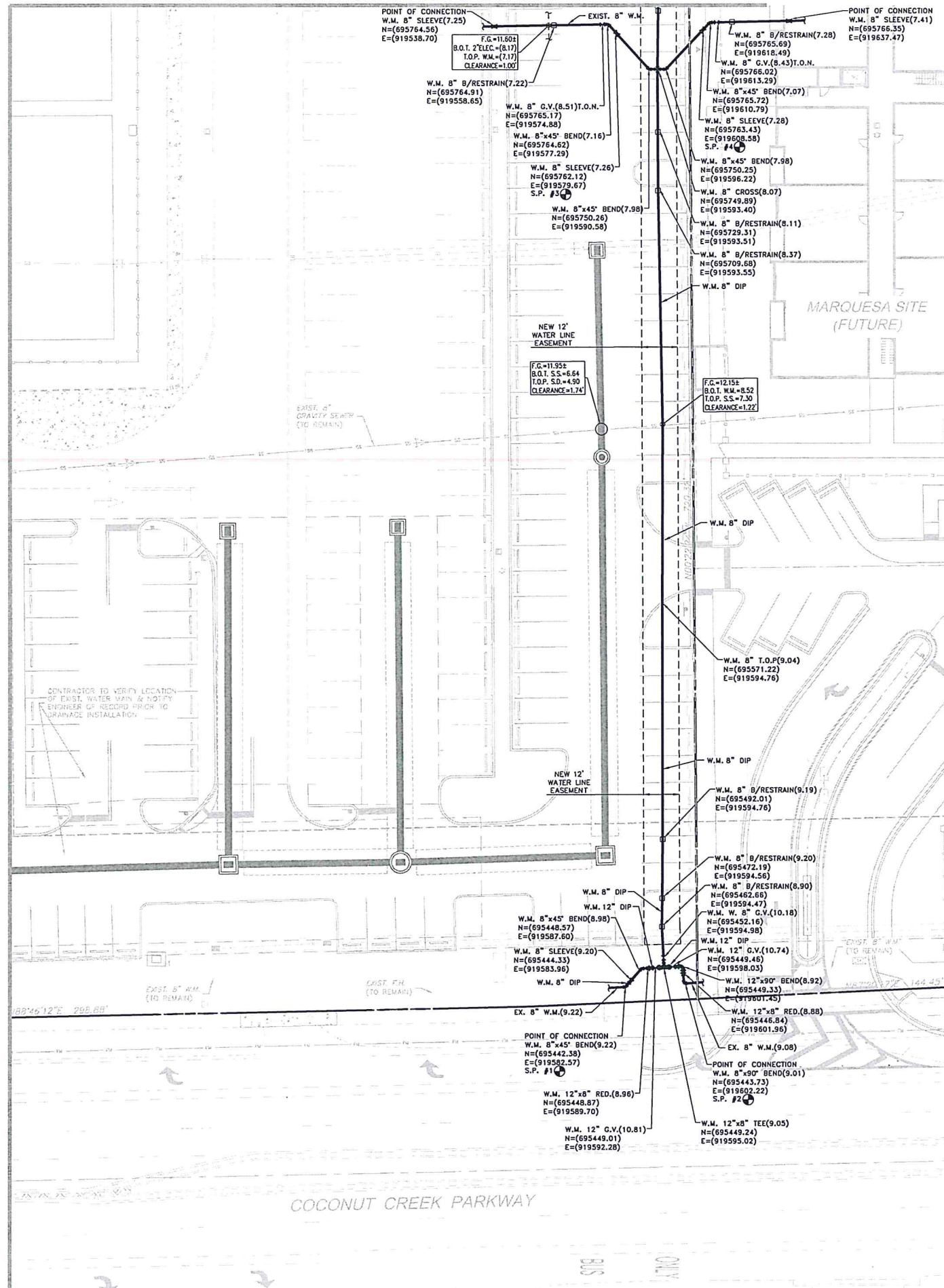
MATCH LINE D - D FOR CONTINUATION SEE SHEET CE-3.4

RECORD DRAWING



KEYMAP

MATCH LINE A - A FOR CONTINUATION SEE SHEET CE-3.1



**SURVEYOR'S LEGEND**

(5.85)	- DENOTES AS-BUILT ELEVATION
F.G.	- FINISHED GRADE ELEVATION
T.O.M.	- TOP OF MUD
T.O.P.	- TOP OF PIPE
B.O.T.	- BOTTOM OF PIPE
I.M.	- PIPE INVERT ELEVATION
R.E.	- RIM ELEVATION
G.E.	- GROUND ELEVATION
G.V.	- GATE VALVE
W.M.	- WATER MAIN PIPE
S.D.	- STORM DRAINAGE PIPE
S.S.	- SANITARY SEWER PIPE
EX.	- EXISTING
DSSC	- DOUBLE STRAP SERVICE CLAMP
CORP.	- CORPORATION STOP VALVE
RPZ	- REDUCED PRESSURE ZONE VALVE

**WATER & SEWER LEGEND**

—	PROPERTY LINE	—	EXISTING OR FUTURE UTILITIES
—	RIGHT-OF-WAY LINE	—	DRAINAGE STRUCTURE w/PIPE
—	DOUBLE WATER METER SERVICE	—	DIP PIPE
—	SINGLE WATER METER SERVICE	—	EXIST UTILITY DEMOLITION
—	LENGTH, SIZE & TYPE OF WATER MAIN	—	RIM ELEVATION
—	FIRE HYDRANT, GATE VALVE & TEE ASSEMBLY	—	INVERT ELEVATION
—	PROPOSED GATE VALVE	—	MANHOLE DESIGNATION
—	PROPOSED CHECK VALVE	—	LENGTH & SLOPE OF PIPE
—	BACTERIOLOGICAL SAMPLING POINT	—	DOUBLE SEWER LATERAL
—	PROP LIGHT POLE	—	SINGLE SEWER LATERAL
—		—	CLEAN OUT TO GRADE

- NOTES:
1. THIS SURVEY IS NOT VALID WITHOUT THE ORIGINAL SIGNATURE AND SEAL OF THE FLORIDA LICENSED SURVEYOR AND MAPPER.
  2. ELEVATIONS SHOWN HEREON ARE RELATIVE TO NORTH AMERICAN VERTICAL DATUM (N.A.V.D.) OF 1988
  3. THIS IS NOT A BOUNDARY SURVEY.
  4. (7.92) DENOTES "RECORD" ELEVATIONS.
  5. BENCHMARK No.1442 COUNTY: BROWARD "SQUARE" CUT ON NORTHEAST CORNER OF CONCRETE SLAB FOR SOUTHERN BELL TELEPHONE VAULT, 250' SOUTH OF CENTERLINE OF COCONUT PARKWAY AND 30' EAST OF CENTERLINE OF BANKS ROAD ELEVATION = 11.13' (N.A.V.D.88).

**PEDRO F. MUNOZ**  
 PROFESSIONAL SURVEYOR AND MAPPER  
 11765 WEST OKERCHOBER ROAD  
 HIALEAH GARDENS, FLORIDA 33018  
 (305)825-9800

**Pedro F. Munoz**  
 Digitally signed by Pedro F. Munoz  
 Date: 2024.06.25 16:07:29 -0400'



This item has been digitally signed and sealed by Pedro F. Munoz, Professional Surveyor and Mapper, on the date adjacent to the seal using a SHA authentication code.  
 Printed copies of this document are not considered signed and sealed and the SHA authentication code must be verified on any electronic copies.

4577 High Hill Road, Suite 102  
 Sunrise, FL 33351  
 www.suntechinc.com  
**Sun-Tech Engineering, Inc.**  
 Engineers • Planners • Surveyors

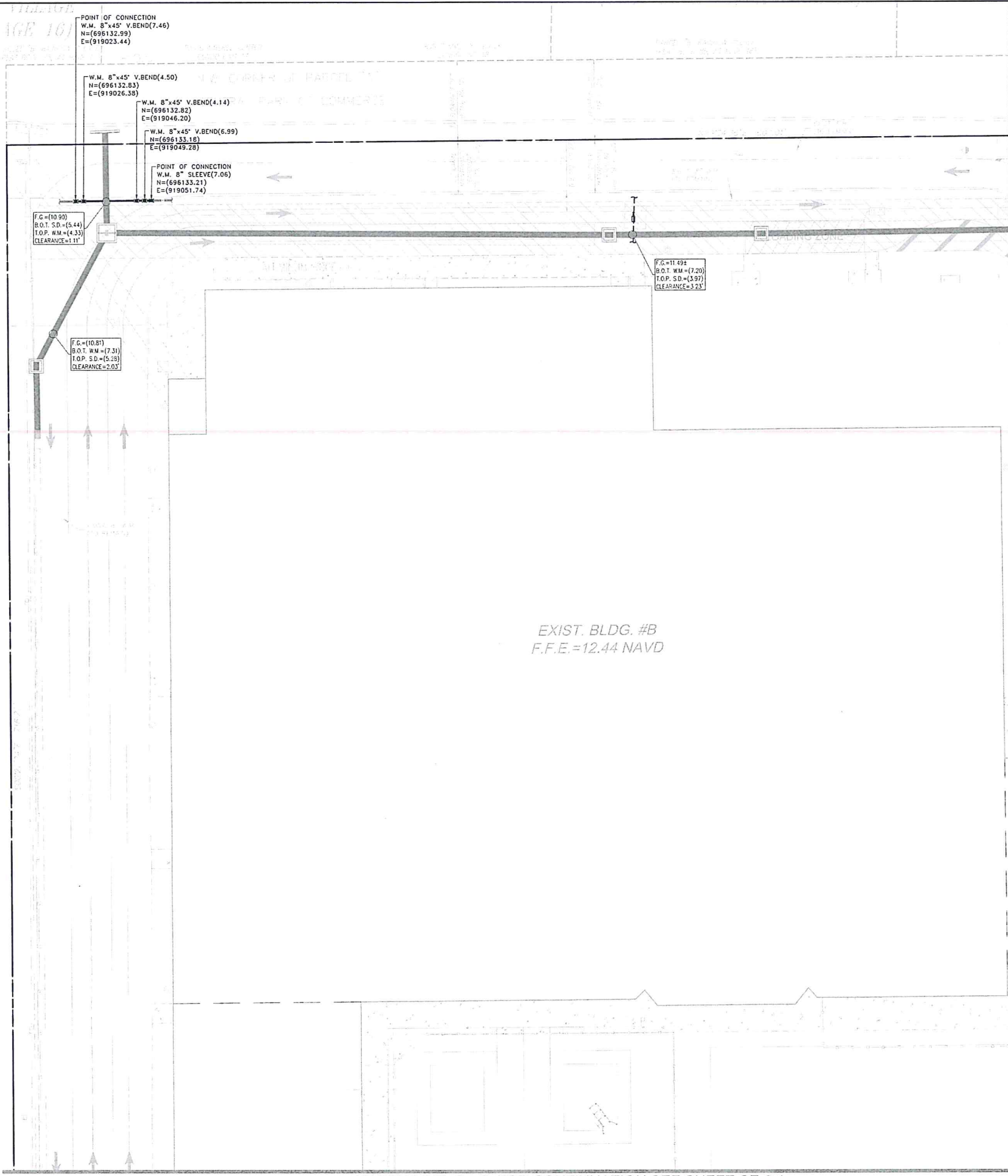
REVISIONS

NO.	DATE	DESCRIPTION
1	06/25/24	ADDED EXIST. P.M. INFO.
2	06/27/24	REV. PER FIELD CONDITIONS.

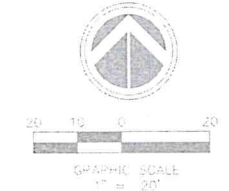
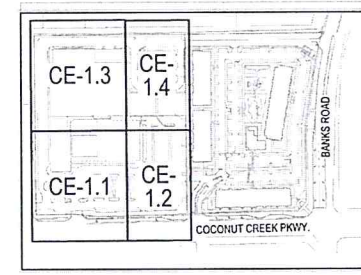
WEST BROWARD ACADEMY  
 FLORIDA  
 WATER AS-BUILT PLAN

DATE: SEP 2021  
 SCALE: 1" = 20'  
 DESIGNED BY: C.R.L.  
 DRAWN BY: A.V.  
 JOB #: 22-4149

SHEET No.  
**CE-3.2**



**RECORD DRAWING**



**KEYMAP**

**SURVEYOR'S LEGEND**

- (5.85) - DENOTES AS-BUILT ELEVATION
- F.G. - FINISHED GRADE ELEVATION
- T.O.N. - TOP OF NUT
- T.O.P. - TOP OF PIPE
- B.O.T. - BOTTOM OF PIPE
- I.M. - PIPE INVERT ELEVATION
- R.E. - RIM ELEVATION
- G.E. - GROUND ELEVATION
- G.V. - GATE VALVE
- W.M. - WATER MAIN PIPE
- S.D. - STORM DRAINAGE PIPE
- S.S. - SANITARY SEWER PIPE
- EX. - EXISTING
- DSSC - DOUBLE STRAP SERVICE CLAMP
- CORP. - CORPORATION STOP VALVE
- RPZ - REDUCED PRESSURE ZONE VALVE

**WATER & SEWER LEGEND**


- NOTES:
- THIS SURVEY IS NOT VALID WITHOUT THE ORIGINAL SIGNATURE AND SEAL OF THE FLORIDA LICENSED SURVEYOR AND MAPPER.
  - ELEVATIONS SHOWN HEREON ARE RELATIVE TO NORTH AMERICAN VERTICAL DATUM (N.A.V.D.) OF 1988
  - THIS IS NOT A BOUNDARY SURVEY.
  - (7.92) DENOTES "RECORD" ELEVATIONS
  - BENCHMARK No.1442  
COUNTY: BROWARD  
"SQUARE" CUT ON NORTHEAST CORNER OF CONCRETE SLAB FOR SOUTHERN BELL TELEPHONE VAULT, 25' SOUTH OF CENTERLINE OF COCONUT PARKWAY AND 30' EAST OF CENTERLINE OF BANKS ROAD.  
ELEVATION = 11.13' (N.A.V.D. 88)

**PEDRO F. MUNOZ**  
PROFESSIONAL SURVEYOR AND MAPPER  
11705 WEST OAKCREEK ROAD  
HIALEAH GARDENS, FLORIDA 33018  
(305)825-9800

**Pedro F. Munoz**  
Digitally signed by Pedro F. Munoz  
Date: 2024.06.25  
Munoz 1607-48-0400

This item has been digitally signed and sealed by Pedro F. Munoz, Professional Surveyor and Mapper, on the date adjacent to the seal using a SHA authentication code.  
Printed copies of this document are not considered signed and sealed and the SHA authentication code must be verified on any electronic copies.



MATCH LINE B - B FOR CONTINUATION SEE SHEET CE-3.4

MATCH LINE C - C FOR CONTINUATION SEE SHEET CE-3.1

4577 N.W. 11th Road, Suite 103  
Sun-Tech, Inc.  
www.suntech-brow.com  
Phone (954) 777-3123  
Fax (954) 777-3113



**REVISIONS**

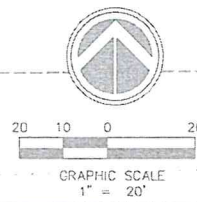
NO.	DATE	DESCRIPTION

**WEST BROWARD ACADEMY**  
MARGATE, FLORIDA  
**WATER AS-BUILT PLAN**

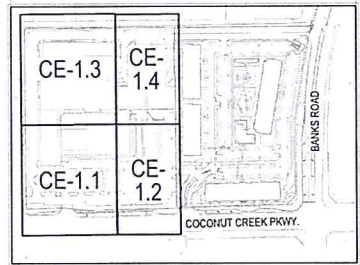
DATE: SEP 2021  
SCALE: 1" = 20'  
DESIGNED BY: C.R.L.  
DRAWN BY: A.V.  
JOB #: 22-4149

SHEET No.  
**CE-3.3**

PANEL "A" RAINBOW VILLAGE  
(PLAT BOOK 83, AT PAGE 16)

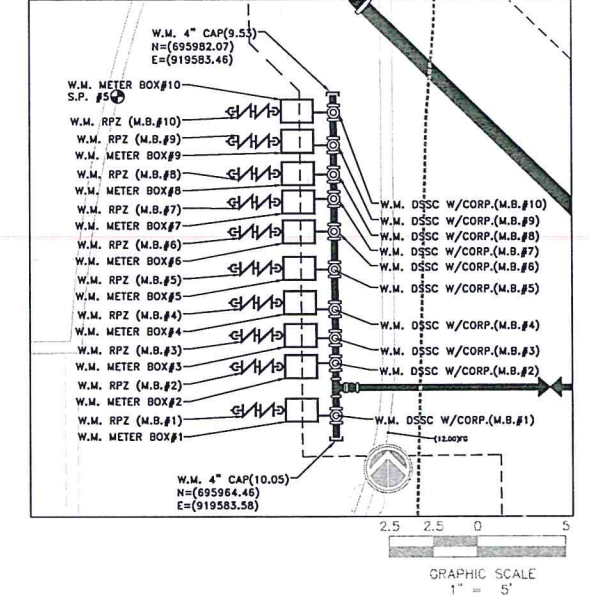


RECORD DRAWING



KEYMAP

DETAIL "A"  
METER BOXES, DOUBLE STRAP SERVICE CLAMPS, CORP.  
STOPS, AND BACKFLOW PREVENTERS ASSEMBLES



GRAPHIC SCALE  
1" = 5'

**WATER & SEWER LEGEND**

—	PROPERTY LINE	—	EXISTING OR FUTURE UTILITIES
—	RIGHT-OF-WAY LINE	—	ORANGE STRUCTURE w/PIPE
—	DOUBLE WATER METER SERVICE	—	DRP PIPE
—	SINGLE WATER METER SERVICE	—	EXIST. UTILITY DENOTATION
—	LENGTH, SIZE & TYPE OF WATER MAIN	—	R.E. RIM ELEVATION
—	FIRE HYDRANT, GATE VALVE & TEE ASSEMBLY	—	I.E. INVERT ELEVATION
—	PROPOSED GATE VALVE	—	M.H. MANHOLE DESIGNATION
—	PROPOSED CHECK VALVE	—	— 25 L.F./25' LENGTH & SLOPE OF PIPE
—	BACTERIOLOGICAL SAMPLING POINT	—	— 35 L.F./35' DOUBLE SEWER LATERAL
—	PROP LIGHT POLE	—	— SINGLE SEWER LATERAL
—		—	— CLEAN OUT TO GRADE

- NOTES:
- THIS SURVEY IS NOT VALID WITHOUT THE ORIGINAL SIGNATURE AND SEAL OF THE FLORIDA LICENSED SURVEYOR AND MAPPER.
  - ELEVATIONS SHOWN HEREON ARE RELATIVE TO NORTH AMERICAN VERTICAL DATUM (N.A.V.D.) OF 1983.
  - THIS IS NOT A BOUNDARY SURVEY.
  - (7.92) DENOTES "RECORD" ELEVATIONS.
  - BENCHMARK No.1442  
COUNTY: BROWARD  
"SQUARE" CUT ON NORTHEAST CORNER OF CONCRETE SLAB FOR SOUTHERN BELL TELEPHONE VAULT, 250' SOUTH OF CENTERLINE OF COCONUT PARKWAY AND 30' EAST OF CENTERLINE OF BANKS ROAD.  
ELEVATION = 11.13' (N.A.V.D.89).

**SURVEYOR'S LEGEND**

(S.85)	- DENOTES AS-BUILT ELEVATION
F.G.	- FINISHED GRADE ELEVATION
T.O.N.	- TOP OF NUT
T.O.P.	- TOP OF PIPE
B.O.T.	- BOTTOM OF PIPE
I.M.	- PIPE INVERT ELEVATION
R.E.	- RIM ELEVATION
G.E.	- GROUND ELEVATION
G.V.	- GATE VALVE
W.M.	- WATER MAIN PIPE
S.D.	- STORM DRAINAGE PIPE
S.S.	- SANITARY SEWER PIPE
EX.	- EXISTING
DSSC	- DOUBLE STRAP SERVICE CLAMP
CORP.	- CORPORATION STOP VALVE
RPZ	- REDUCED PRESSURE ZONE VALVE

**PEDRO F. MUNOZ**  
PROFESSIONAL SURVEYOR AND MAPPER  
11765 WEST OKEECHOBEE ROAD  
HIALEAH GARDENS, FLORIDA 33018  
(305)825-9800

Pedro F. Munoz  
Digitally signed by Pedro F. Munoz  
Date: 2024.06.25 16:08:10 -0400



This item has been digitally signed and sealed by Pedro F. Munoz, Professional Surveyor and Mapper, on the date adjacent to the seal using a SHA authentication code.  
Printed copies of this document are not considered signed and sealed and the SHA authentication code must be verified on any electronic copies.

**METER BOXES (INFO)**

METER BOX#	R.E.	NORTHING	EASTING
5/8" METER BOX#1	12.50	695,966.06	919,581.63
5/8" METER BOX#2	12.47	695,968.54	919,581.60
5/8" METER BOX#3	12.45	695,970.32	919,581.57
5/8" METER BOX#4	12.45	695,972.17	919,581.55
5/8" METER BOX#5	12.41	695,974.13	919,581.53
5/8" METER BOX#6	12.37	695,976.20	919,581.50
5/8" METER BOX#7	12.35	695,977.89	919,581.48
5/8" METER BOX#8	12.36	695,979.51	919,581.46
5/8" METER BOX#9	12.32	695,981.34	919,581.39
5/8" METER BOX#10	12.30	695,983.05	919,581.42
5/8" METER BOX#11	12.55	695,926.74	919,597.05

**DOUBLE STRAP SERVICE CLAMP W/CORP. STOP FOR METER BOXES (INFO)**

DOUBLE STRAP SERVICE CLAMP W/CORP. STOP (M.B.#)	ELEV.	NORTHING	EASTING
4"x1" DOUBLE STRAP SERVICE CLAMP W/1" CORP. STOP (M.B.#1)	10.00	695,985.74	919,583.49
4"x1" DOUBLE STRAP SERVICE CLAMP W/1" CORP. STOP (M.B.#2)	9.89	695,968.73	919,583.43
4"x1" DOUBLE STRAP SERVICE CLAMP W/1" CORP. STOP (M.B.#3)	9.82	695,970.16	919,583.39
4"x1" DOUBLE STRAP SERVICE CLAMP W/1" CORP. STOP (M.B.#4)	9.76	695,971.80	919,583.39
4"x1" DOUBLE STRAP SERVICE CLAMP W/1" CORP. STOP (M.B.#5)	9.71	695,973.30	919,583.40
4"x1" DOUBLE STRAP SERVICE CLAMP W/1" CORP. STOP (M.B.#6)	9.67	695,974.91	919,583.38
4"x1" DOUBLE STRAP SERVICE CLAMP W/1" CORP. STOP (M.B.#7)	9.62	695,976.58	919,583.44
4"x1" DOUBLE STRAP SERVICE CLAMP W/1" CORP. STOP (M.B.#8)	9.52	695,978.06	919,583.37
4"x1" DOUBLE STRAP SERVICE CLAMP W/1" CORP. STOP (M.B.#9)	9.53	695,979.44	919,583.42
4"x1" DOUBLE STRAP SERVICE CLAMP W/1" CORP. STOP (M.B.#10)	9.53	695,981.11	919,583.41
8"x1-1/2" DOUBLE STRAP SERVICE CLAMP W/1-1/2" CORP. STOP (M.B.#11)	7.47	695,927.47	919,592.32

**BACKFLOW PREVENTERS (INFO)**

RPZ (M.B.#)	ELEV. 90° BEND (UP)	ELEV. 90° BEND (DOWN)	NORTHING	EASTING
1-1/2"x90° V.BEND (M.B.#11)	11.87	14.10	695,926.79	919,594.58
1-1/2"x90° V.BEND (OUT) (M.B.#11)	11.92	14.11	695,926.84	919,591.58
1"x90° V.BEND (M.B.#1)	11.90	14.04	695,966.15	919,580.52
1"x90° V.BEND (M.B.#2)	11.84	13.95	695,968.42	919,580.41
1"x90° V.BEND (M.B.#3)	11.83	13.99	695,970.22	919,580.51
1"x90° V.BEND (M.B.#4)	11.83	14.00	695,972.10	919,580.24
1"x90° V.BEND (M.B.#5)	11.89	14.05	695,974.15	919,580.34
1"x90° V.BEND (M.B.#6)	11.78	13.96	695,978.21	919,580.36
1"x90° V.BEND (M.B.#7)	11.75	13.91	695,977.99	919,580.38
1"x90° V.BEND (M.B.#8)	11.72	13.86	695,979.51	919,580.42
1"x90° V.BEND (M.B.#9)	11.62	13.74	695,981.41	919,580.42
1"x90° V.BEND (M.B.#10)	11.63	13.77	695,982.97	919,580.47
1"x90° V.BEND (OUT) (M.B.#1)	11.93	14.06	695,966.14	919,578.30
1"x90° V.BEND (OUT) (M.B.#2)	11.80	13.93	695,968.34	919,578.23
1"x90° V.BEND (OUT) (M.B.#3)	11.85	14.00	695,970.05	919,578.38
1"x90° V.BEND (OUT) (M.B.#4)	11.81	13.96	695,972.21	919,578.02
1"x90° V.BEND (OUT) (M.B.#5)	11.92	14.07	695,974.11	919,578.10
1"x90° V.BEND (OUT) (M.B.#6)	11.87	13.95	695,976.08	919,578.04
1"x90° V.BEND (OUT) (M.B.#7)	11.81	13.91	695,977.59	919,578.24
1"x90° V.BEND (OUT) (M.B.#8)	11.70	13.84	695,979.35	919,578.11
1"x90° V.BEND (OUT) (M.B.#9)	11.64	13.78	695,981.43	919,578.14
1"x90° V.BEND (OUT) (M.B.#10)	11.60	13.75	695,982.86	919,578.30

MATCH LINE B - B FOR CONTINUATION SEE SHEET CE-3.3

EXIST. BLDG #C  
F.F.E.=12.35 NAVD

EXIST. BLDG #D  
F.F.E.=12.32 NAVD

MATCH LINE D - D FOR CONTINUATION SEE SHEET CE-3.2

4577 N.W. 11th Road, Suite 102  
Sunrise, FL 33351  
www.sun-tech.com

**Sun-Tech**  
Engineering, Inc.  
Engineers - Planners - Surveyors



**REVISIONS**

NO.	DATE	DESCRIPTION
1	08/12/22	REV. PER FIELD CONDITION.
2	09/26/22	REV. PER FIELD CONDITION.
3	11/09/22	REV. PER FIELD CONDITION.

WEST BROWARD ACADEMY  
FLORIDA  
MARGATE  
WATER AS-BUILT PLAN

DATE: SEP 2021  
SCALE: 1" = 20'  
DESIGNED BY: C.R.L.  
DRAWN BY: A.V.  
JOB #: 22-149

SHEET No.  
CE-3.4