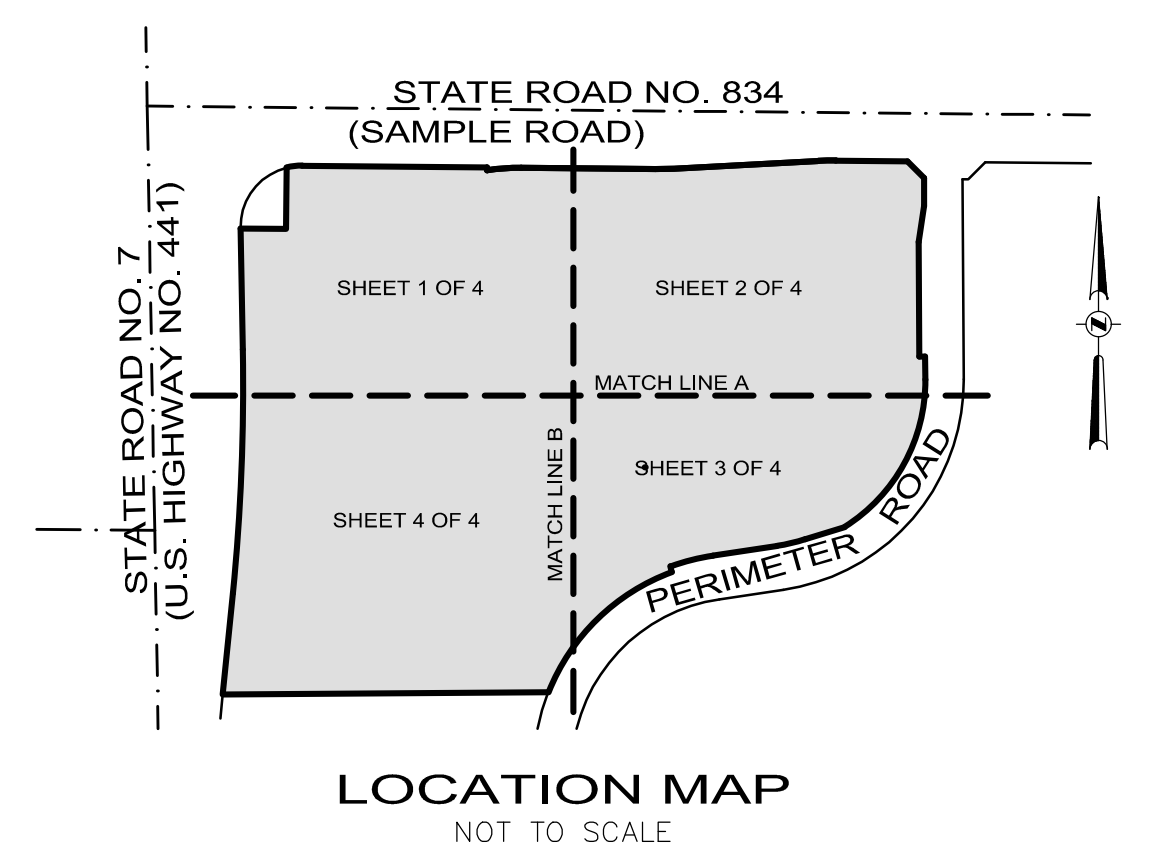


- LEGEND**
- CONCRETE
 - ASPHALT PAVEMENT
 - OVERHEAD WIRES
 - UNDERGROUND GAS LINE
 - NON-VEHICULAR ACCESS LINE
 - CENTERLINE
 - R
 - CA
 - L
 - FPL
 - O.R.B.
 - TP



LEGAL DESCRIPTION:
ALL OF TRACT "A", "PEPPERTREE PLAZA", ACCORDING TO THE PLAT THEREOF, AS RECORDED IN PLAT BOOK 132, PAGE 23, OF THE PUBLIC RECORDS OF BROWARD COUNTY, FLORIDA.

- NOTES:**
- 1) THIS SITE CONTAINS 1,331,461 SQUARE FEET (30.5661 ACRES).
 - 2) ELEVATIONS ARE BASED ON NORTH AMERICAN VERTICAL DATUM OF 1988, BROWARD COUNTY BENCHMARK: 2731, ELEVATION: 13.410'
 - 3) FLOOD ZONE: AH & X; BASE FLOOD ELEVATION: 14 FEET & NONE; PANEL #120047 0165H; MAP DATE: 08/18/14.
 - 4) THIS SITE LIES IN SECTION 19, TOWNSHIP 48 SOUTH, RANGE 42 EAST, BROWARD COUNTY, FLORIDA.
 - 5) BEARINGS ARE BASED ON THE NORTH LINE OF THE NW 1/4 OF SECTION 19-48-42 BEING S89°27'44"E AS SHOWN ON THE PLAT OF "PEPPERTREE PLAZA", PLAT BOOK 132, PAGE 23, BROWARD COUNTY RECORDS.
 - 6) REASONABLE EFFORTS WERE MADE REGARDING THE EXISTENCE AND THE LOCATION OF UNDERGROUND UTILITIES. THIS FIRM, HOWEVER, DOES NOT ACCEPT RESPONSIBILITY FOR THIS INFORMATION. BEFORE EXCAVATION OR CONSTRUCTION CONTACT THE APPROPRIATE UTILITY COMPANIES FOR FIELD VERIFICATION.
 - 7) THIS SURVEY IS CERTIFIED EXCLUSIVELY TO: THOMAS ENGINEERING GROUP.
 - 8) THE HORIZONTAL POSITIONAL ACCURACY OF WELL DEFINED IMPROVEMENTS ON THIS SURVEY IS ±0.2'. THE VERTICAL ACCURACY OF ELEVATIONS OF WELL DEFINED IMPROVEMENTS ON THIS SURVEY IS ±0.1'.
 - 9) THIS SURVEY WAS PREPARED WITHOUT BENEFIT OF TITLE COMMITMENT.

CERTIFICATION:
I HEREBY CERTIFY THAT THIS SKETCH OF SURVEY MEETS THE STANDARDS OF PRACTICE SET FORTH BY THE FLORIDA DEPARTMENT OF AGRICULTURE AND CONSUMER SERVICES ("DOACS") CHAPTER 5J-17, FLORIDA ADMINISTRATIVE CODE, PURSUANT TO SECTION 472.027, FLORIDA STATUTES.

NOT VALID WITHOUT THE SIGNATURE AND THE ORIGINAL RAISED SEAL OF A FLORIDA LICENSED SURVEYOR AND MAPPER.

- JOHN F. PULICE, PROFESSIONAL SURVEYOR AND MAPPER LS2691
 - BETH BURNS, PROFESSIONAL SURVEYOR AND MAPPER LS6136
- STATE OF FLORIDA

THIS DOCUMENT IS NEITHER FULL NOR COMPLETE WITHOUT SHEETS 1 THROUGH 4 INCLUSIVE

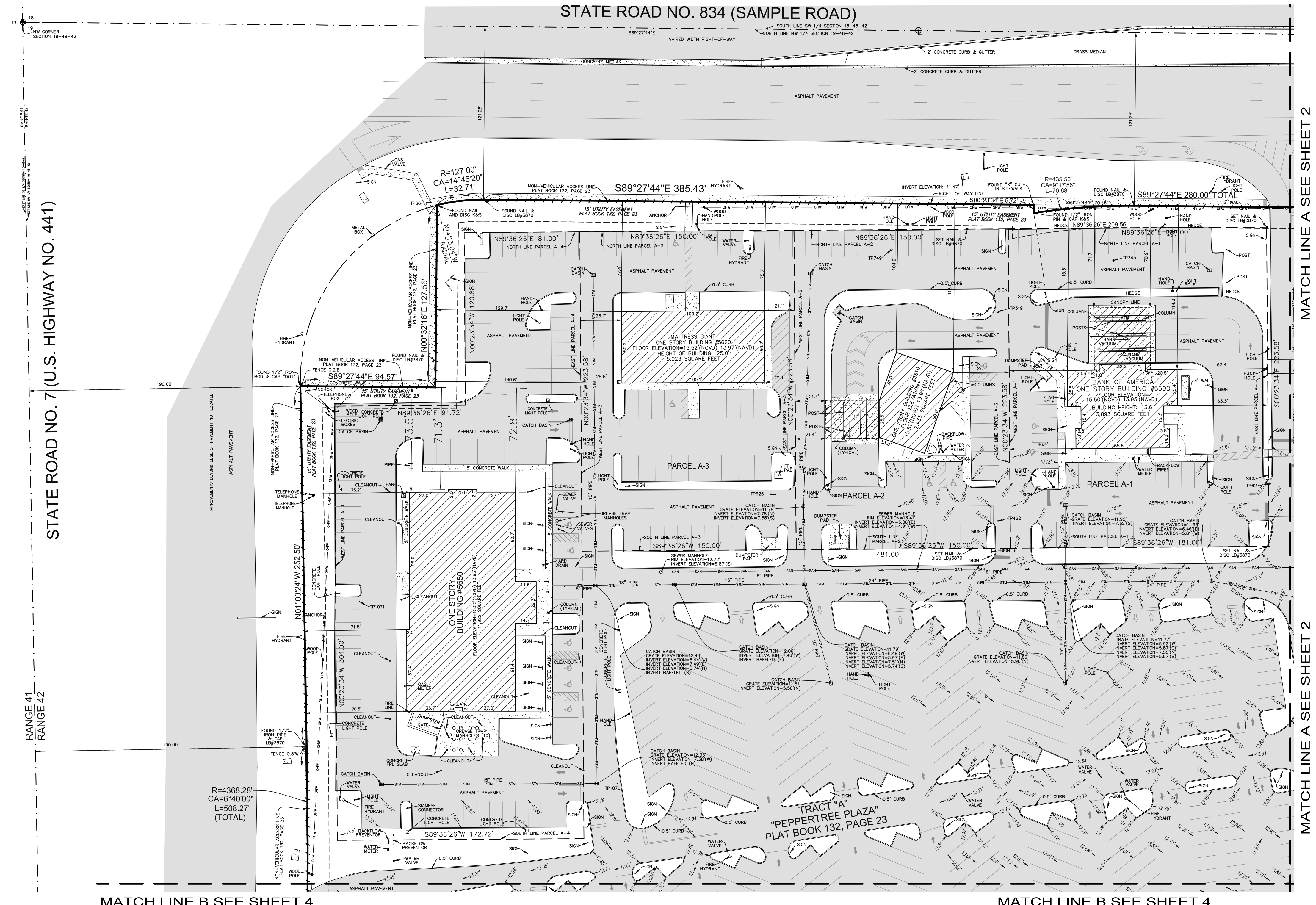
SHEET 1 OF 4		
NO.	REVISIONS	BY

BOUNDARY SURVEY

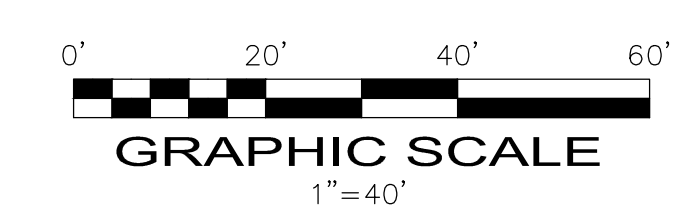
PLS

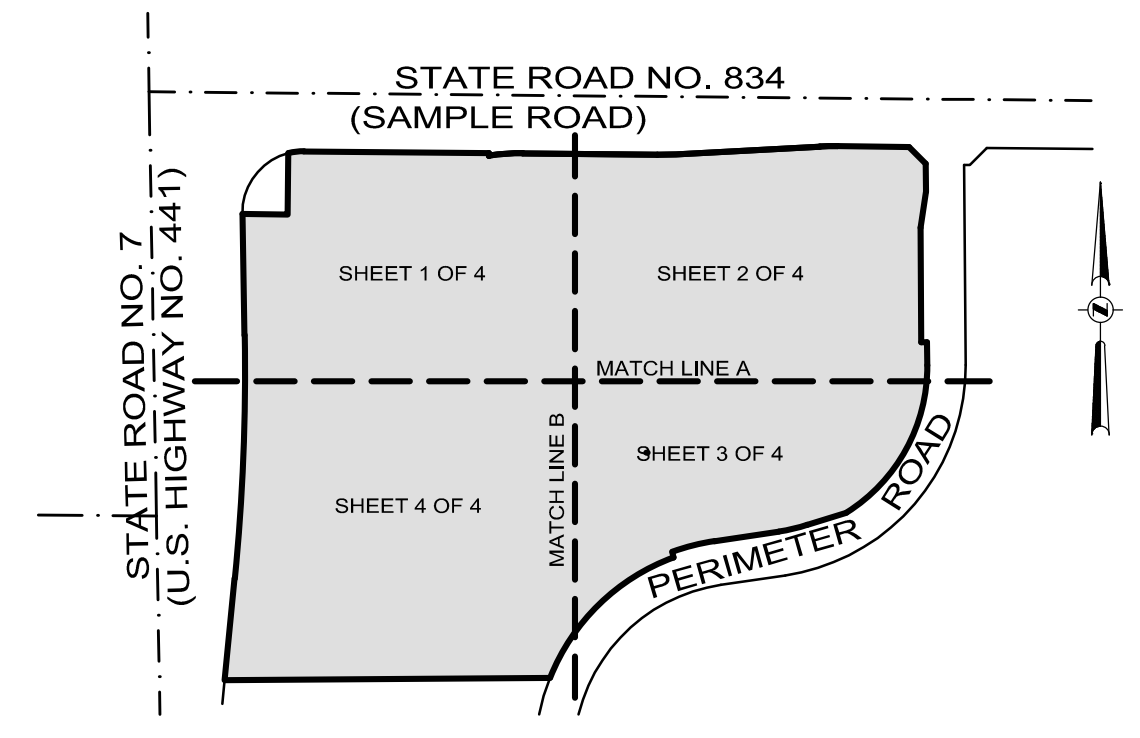
PULICE LAND SURVEYORS, INC.
5381 NOB HILL ROAD
SUNRISE, FLORIDA 33351
TELEPHONE: (954) 572-1777
FAX: (954) 572-1778
E-MAIL: surveys@pulicelandsurveyors.com
CERTIFICATE OF AUTHORIZATION LB#3870

DRAWN BY: B.E.	SCALE: 1" = 40'	FILE: THOMAS ENGINEERING GROUP
CHECKED BY: J.F.P.	SURVEY DATE: 02/10/15	ORDER NO.: 58566

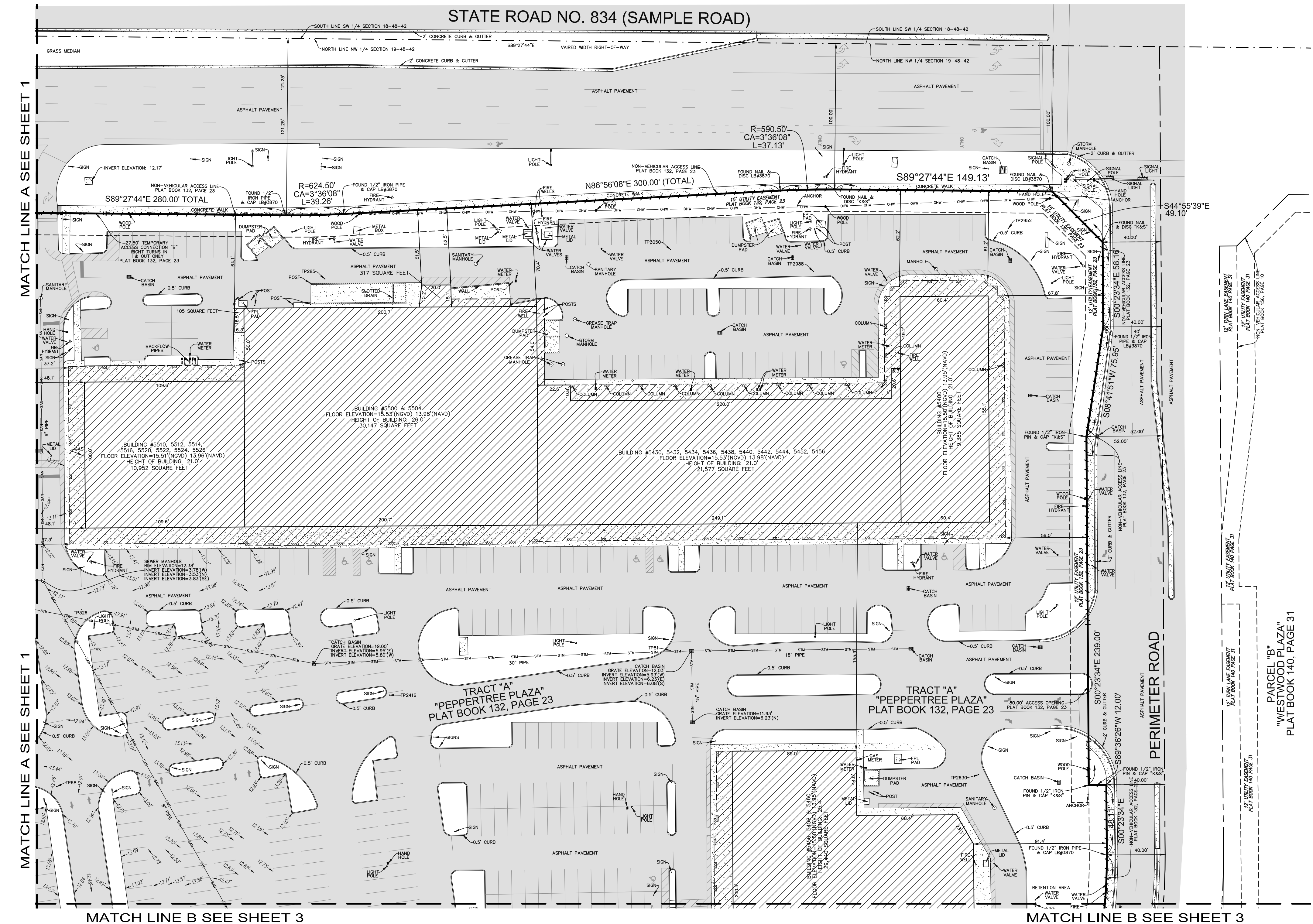


COPYRIGHT 2015 BY PULICE LAND SURVEYORS, INC. ALL RIGHTS RESERVED. NO PART OF THIS SURVEY MAY BE REPRODUCED, IN ANY FORM OR BY ANY MEANS, WITHOUT PERMISSION IN WRITING FROM AN OFFICER OF PULICE LAND SURVEYORS, INC.





LOCATION MAP
NOT TO SCALE



LEGEND

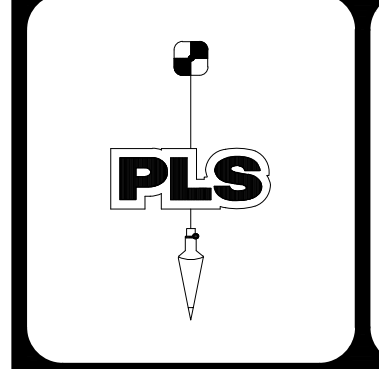
- CONCRETE
- ASPHALT PAVEMENT
- OVERHEAD WIRES
- UNDERGROUND GAS LINE
- NON-VEHICULAR ACCESS LINE
- CENTERLINE
- R RADIUS
- CA CENTRAL ANGLE
- L ARC LENGTH
- FPL FLORIDA POWER & LIGHT
- O.R.B. OFFICIAL RECORDS BOOK
- TP TRAVERSE POINT FOR FIELD INFORMATION ONLY

SHEET 2 OF 4

THIS DOCUMENT IS NEITHER FULL
NOR COMPLETE WITHOUT SHEETS
1 THROUGH 4 INCLUSIVE

PEPPERTREE PLAZA
SAMPLE ROAD AND STATE ROAD NO. 7
MARGATE, BROWARD COUNTY
FLORIDA 33073

BOUNDARY SURVEY

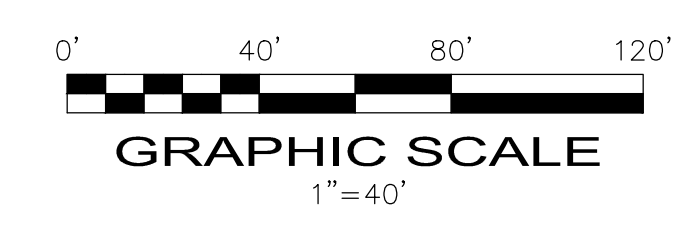


PULICE LAND SURVEYORS, INC.
5381 NOB HILL ROAD
SUNRISE, FLORIDA 33351
TELEPHONE: (954) 572-1777
FAX: (954) 572-1778
E-MAIL: surveys@pulicelandsurveyors.com
CERTIFICATE OF AUTHORIZATION LB#3870

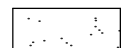

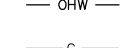
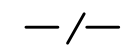
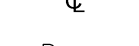







DRAWN BY: B.E.
CHECKED BY: J.F.P.

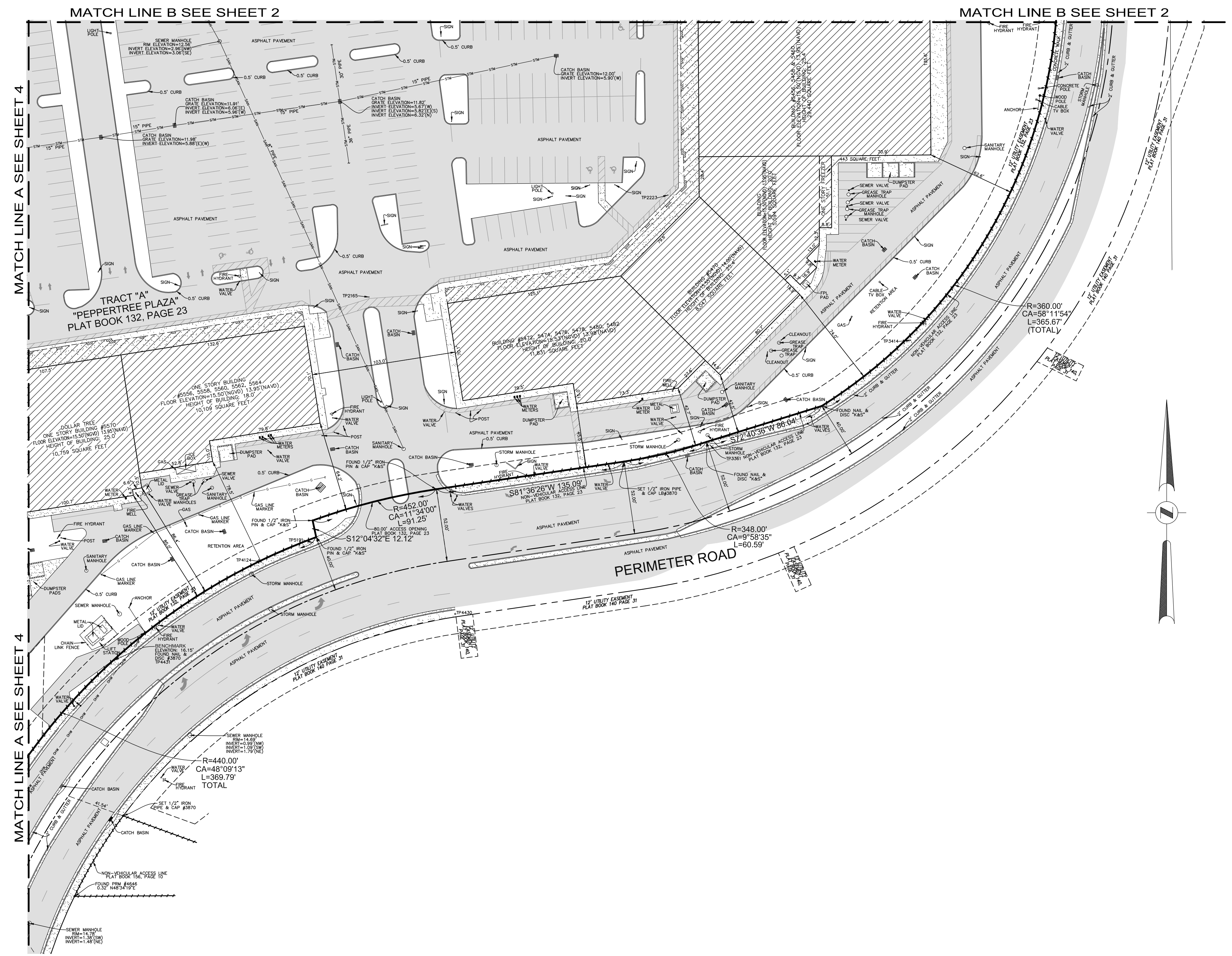
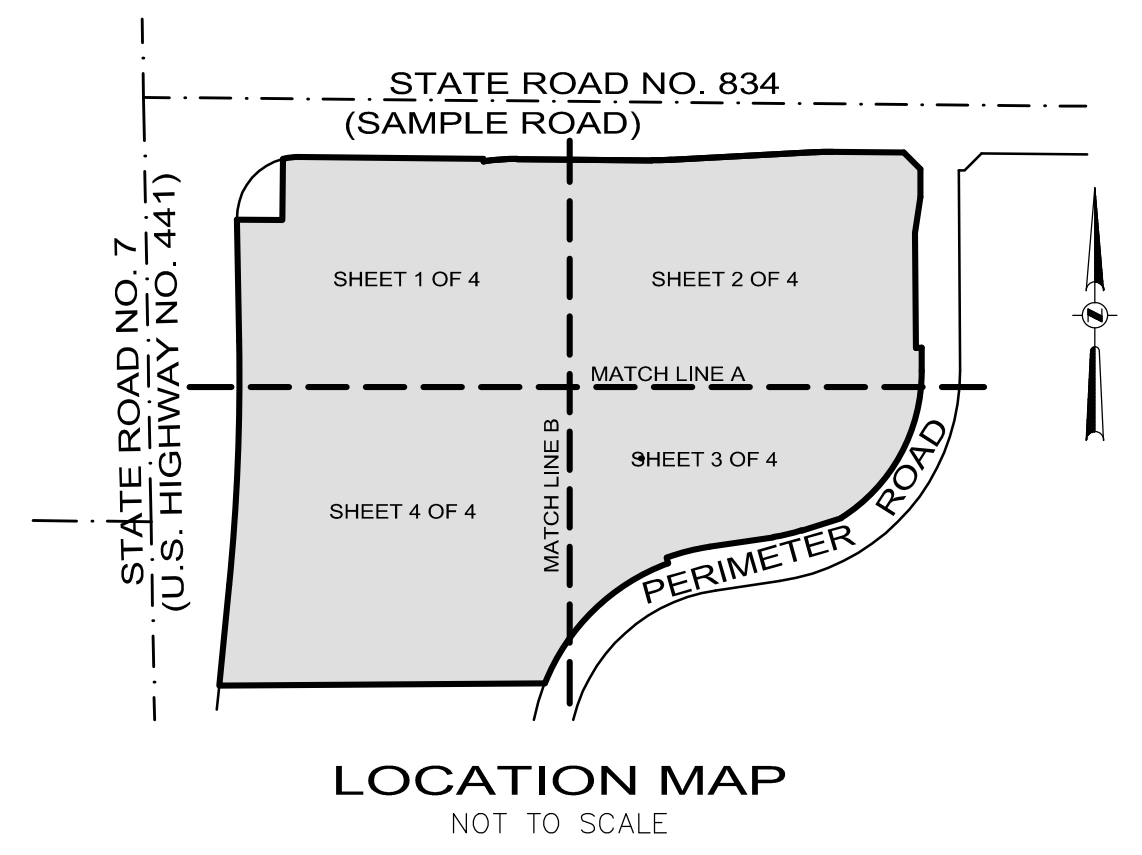
SCALE: 1" = 40'
SURVEY DATE: 02/10/15

FILE: THOMAS ENGINEERING GROUP
ORDER NO.: 58566



COPYRIGHT 2015 BY PULICE LAND SURVEYORS, INC. ALL RIGHTS RESERVED. NO PART OF THIS SURVEY MAY BE REPRODUCED, IN ANY FORM OR BY ANY MEANS, WITHOUT PERMISSION IN WRITING FROM AN OFFICER OF PULICE LAND SURVEYORS, INC.

- LEGEND**
-  CONCRETE
 -  ASPHALT PAVEMENT
 -  OVERHEAD WIRES
 -  UNDERGROUND GAS LINE
 -  NON-VEHICULAR ACCESS LINE
 -  CENTERLINE
 -  R RADIUS
 -  CA CENTRAL ANGLE
 -  L ARC LENGTH
 -  FPL FLORIDA POWER & LIGHT
 -  O.R.B. OFFICIAL RECORDS BOOK
 -  TP TRAVERSE POINT FOR FIELD INFORMATION ONLY

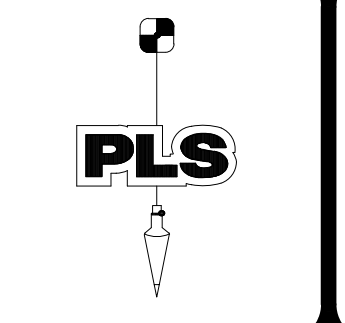


SHEET 3 OF 4

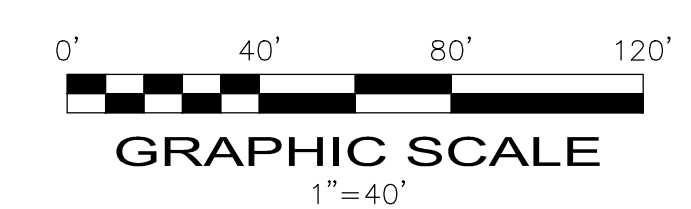
THIS DOCUMENT IS NEITHER FULL NOR COMPLETE WITHOUT SHEETS 1 THROUGH 4 INCLUSIVE

PEPPERTREE PLAZA
 SAMPLE ROAD AND STATE ROAD NO. 7
 MARGATE, BROWARD COUNTY
 FLORIDA 33073

BOUNDARY SURVEY

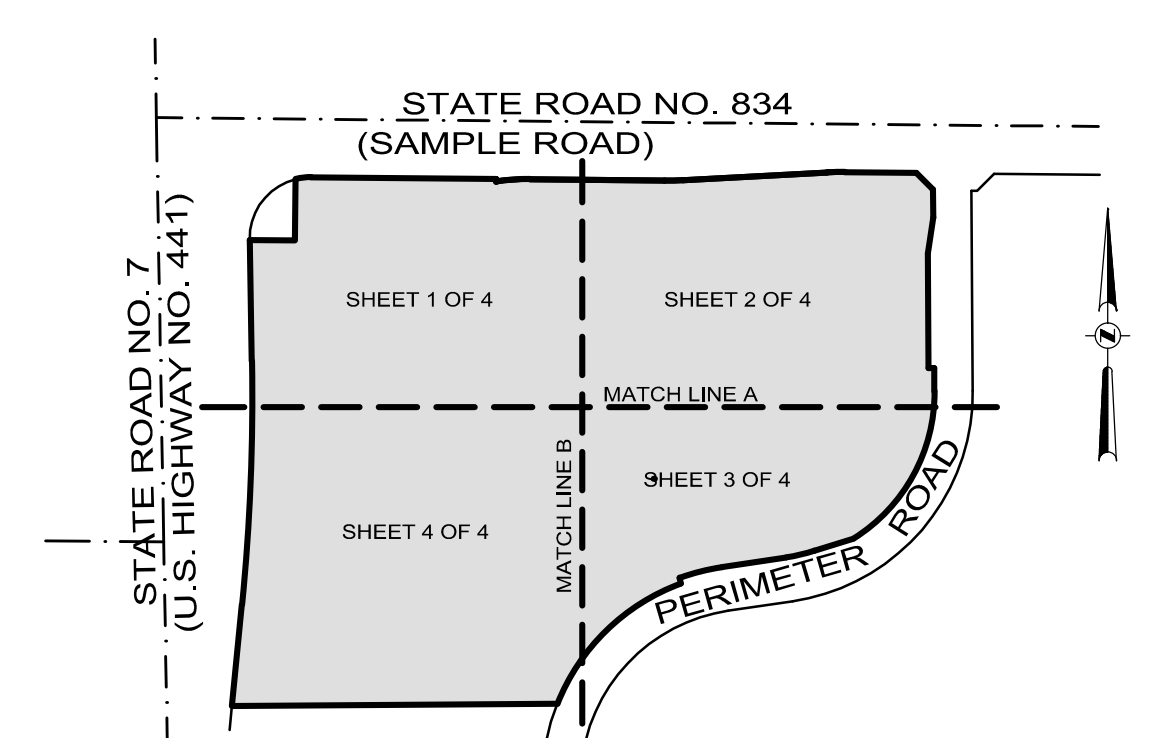
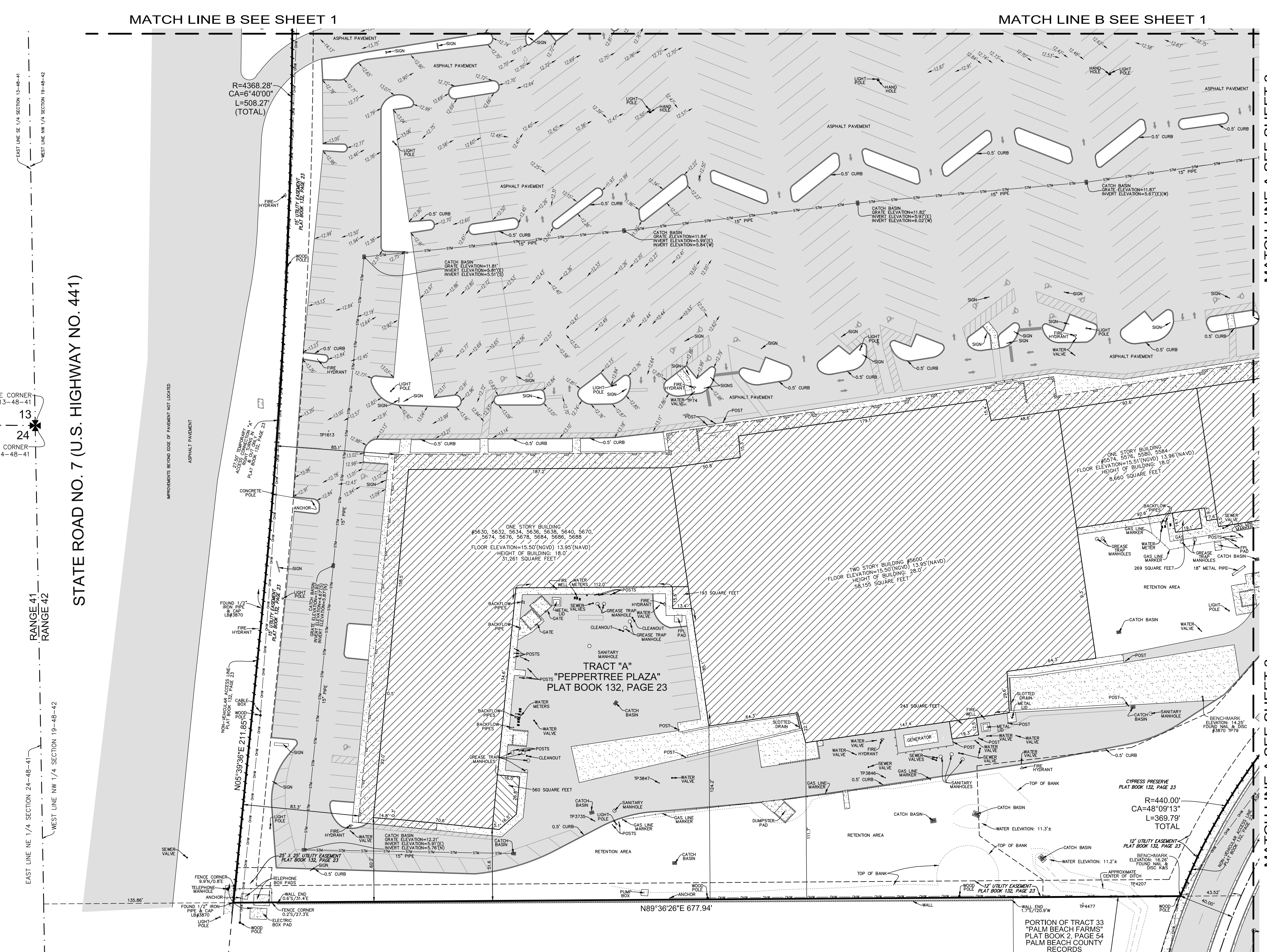


POLICE LAND SURVEYORS, INC.
 5381 NOB HILL ROAD
 SUNRISE, FLORIDA 33351
 TELEPHONE: (954) 572-1777
 FAX: (954) 572-1778
 E-MAIL: surveys@policeandsurveyors.com
 CERTIFICATE OF AUTHORIZATION LB#3870



COPYRIGHT 2015 BY POLICE LAND SURVEYORS, INC. ALL RIGHTS RESERVED. NO PART OF THIS SURVEY MAY BE REPRODUCED, IN ANY FORM OR BY ANY MEANS, WITHOUT PERMISSION IN WRITING FROM AN OFFICER OF POLICE LAND SURVEYORS, INC.

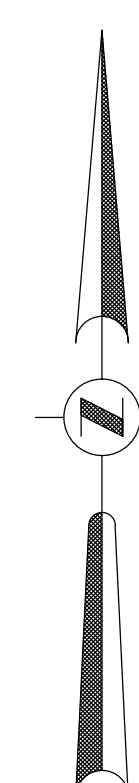
DRAWN BY: B.E.	SCALE: 1" = 40'	FILE: THOMAS ENGINEERING GROUP
CHECKED BY: J.F.P.	SURVEY DATE: 02/10/15	ORDER NO.: 58566



LOCATION MAP
NOT TO SCALE

LEGEND

	CONCRETE
	ASPHALT PAVEMENT
	OVERHEAD WIRES
	UNDERGROUND GAS LINE
	NON-VEHICULAR ACCESS LINE
	CENTERLINE
	RADIUS
	CENTRAL ANGLE
	ARC LENGTH
	FLORIDA POWER & LIGHT
	OFFICIAL RECORDS BOOK
	TRAVERSAE POINT FOR FIELD INFORMATION ONLY



EAST LINE SE 1/4 SECTION 13-48-41
WEST LINE NW 1/4 SECTION 19-48-42
SE CORNER SECTION 13-48-41
NE CORNER SECTION 24-48-41
RANGE 41
RANGE 42
EAST LINE NE 1/4 SECTION 24-48-41
WEST LINE NW 1/4 SECTION 19-48-42

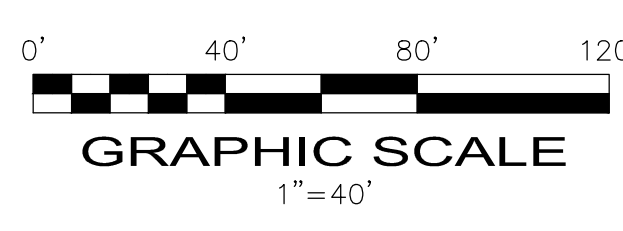
STATE ROAD NO. 7 (U.S. HIGHWAY NO. 441)

MATCH LINE B SEE SHEET 1

MATCH LINE A SEE SHEET 3

MATCH LINE A SEE SHEET 3

COPYRIGHT 2015 BY PULICE LAND SURVEYORS, INC. ALL RIGHTS RESERVED. NO PART OF THIS SURVEY MAY BE REPRODUCED, IN ANY FORM OR BY ANY MEANS, WITHOUT PERMISSION IN WRITING FROM AN OFFICER OF PULICE LAND SURVEYORS, INC.



SHEET 4 OF 4
THIS DOCUMENT IS NEITHER FULL NOR COMPLETE WITHOUT SHEETS 1 THROUGH 4 INCLUSIVE

PEPPERTREE PLAZA
SAMPLE ROAD AND STATE ROAD NO. 7
MARGATE, BROWARD COUNTY
FLORIDA 33073

BOUNDARY SURVEY

	PULICE LAND SURVEYORS, INC. 5381 NOB HILL ROAD SUNRISE, FLORIDA 33351 TELEPHONE: (954) 572-1777 FAX: (954) 572-1778 E-MAIL: surveys@pulicelandsurveyors.com CERTIFICATE OF AUTHORIZATION LB#3870	
	DRAWN BY: B.E. CHECKED BY: J.F.P.	SCALE: 1" = 40' SURVEY DATE: 02/10/15