

ACCESS EASEMENT

(For Access to Allow for the Maintenance of Water and Sewer)

THIS ACCESS EASEMENT is made and entered into this _____, day of _____, 20__ by and between Toscana Park Villas, LLC. hereinafter called the Grantor, and the City of Margate, a Florida municipal corporation organized and existing under the laws of the State of Florida, hereinafter referred to as Grantee;

WITNESSETH: That, for and in consideration of the sum of one dollar (\$1.00) and other good and valuable consideration, the receipt and sufficiency of which is hereby acknowledged, the Grantor hereby grants unto the Grantee, its successors and assigns, forever, a perpetual access easement as described in Exhibit "A", attached hereto and made a part hereof, for the purposes of granting access for maintaining water and sewer, as installed in Exhibit "B" attached hereto and made a part hereof. Situate, lying and being Broward County, Florida,

IN WITNESS WHEREOF, GRANTOR, has caused this Access Easement to be executed in its name this 3rd day of November, 2015.

Witness:

Michelle Curschellas
Michelle Curschellas
Print Name

GRANTOR:

Juan C. Porro
Juan C. Porro
Print Name

Witness:

Alejandro J. Arellano
Alejandro J. Arellano
Print Name

Witness:

Manuel Pato
Manuel Pato
Print Name

STATE OF: Florida
COUNTY OF: Miami-Dade

This foregoing Access Easement acknowledged before me this 3rd day of November, 2015 by Juan C. Porro.

I HEREBY CERTIFY that on this day personally appeared before me, an officer duly authorized to administer oaths and take acknowledgments, of Juan C. Porro to me known as the person described in and who executed the foregoing Access Easement, and who acknowledged before me that he/she executed the same for the purpose herein expressed.

IN WITNESS WHEREOF, I have hereunto set my hand and affixed my official seal at Miami-Dade the above stated County, this 3rd day of November, 2015 A.D.

My Commission Expires:



Lisette S. Saballos
Notary Public

DESCRIPTION:

EXHIBIT "A"

A PORTION OF PARCEL "A", NEWTH PLAT, ACCORDING TO THE PLAT THEREOF AS RECORDED IN PLAT BOOK 173, PG. 36, OF THE PUBLIC RECORDS OF BROWARD COUNTY, FLORIDA, BEING MORE PARTICULARLY DESCRIBED AS FOLLOWS:

COMMENCING AT THE NORTHWEST CORNER OF SAID PARCEL A, NEWTH PLAT, BEING A POINT ON THE A CURVE CONCAVE TO THE NORTHEAST HAVING A RADIUS OF 1009.93 FEET, FROM WHICH A RADIAL LINE BEARS NORTH 42°47'13" EAST; SAID POINT ALSO BEING ON THE SOUTHERLY RIGHT-OF-WAY LINE OF NW 31ST STREET; THENCE SOUTHEASTERLY, ALONG SAID RIGHT-OF-WAY LINE, ALONG THE ARC OF SAID CURVE THROUGH A CENTRAL ANGLE OF 5°30'57", A DISTANCE OF 97.23 FEET TO POINT OF BEGINNING #1;


THENCE, CONTINUING ALONG SAID RIGHT-OF-WAY LINE, ALONG SAID CURVE CONCAVE TO THE NORTHEAST HAVING A RADIUS OF 1009.93 FEET, THROUGH A CENTRAL ANGLE OF 0°40'53", A DISTANCE OF 12.01 FEET; THENCE, DEPARTING SAID SOUTHERLY RIGHT-OF-WAY LINE, SOUTH 34°25'31" WEST, A DISTANCE OF 53.95 FEET; THENCE SOUTH 01°00'34" EAST, A DISTANCE OF 62.18 FEET; THENCE SOUTH 45°58'54" EAST, A DISTANCE OF 97.32 FEET; THENCE NORTH 01°00'45" WEST, A DISTANCE OF 54.92 FEET; THENCE NORTH 88°59'15" EAST, A DISTANCE OF 15.00 FEET; THENCE SOUTH 01°00'45" EAST, A DISTANCE OF 69.94 FEET; THENCE SOUTH 45°58'54" EAST, A DISTANCE OF 9.27 FEET; THENCE NORTH 44°02'14" EAST, A DISTANCE OF 19.07 FEET; THENCE SOUTH 45°57'46" EAST, A DISTANCE OF 12.00 FEET; THENCE SOUTH 44°02'14" WEST, A DISTANCE OF 19.06 FEET; THENCE SOUTH 45°58'54" EAST, A DISTANCE OF 4.92 FEET; THENCE SOUTH 01°00'34" EAST, A DISTANCE OF 2.49 FEET; THENCE NORTH 88°59'26" EAST, A DISTANCE OF 23.14 FEET; THENCE SOUTH 01°00'34" EAST, A DISTANCE OF 12.00 FEET; THENCE SOUTH 88°59'26" WEST, A DISTANCE OF 23.14 FEET; THENCE SOUTH 01°00'34" EAST, A DISTANCE OF 17.41 FEET; THENCE NORTH 88°59'26" EAST, A DISTANCE OF 23.14 FEET; THENCE SOUTH 01°00'34" EAST, A DISTANCE OF 12.00 FEET; THENCE SOUTH 88°59'26" WEST, A DISTANCE OF 23.14 FEET; THENCE SOUTH 01°00'34" EAST, A DISTANCE OF 52.94 FEET; THENCE SOUTH 89°27'23" EAST, A DISTANCE OF 327.04 FEET; THENCE NORTH 00°32'37" EAST, A DISTANCE OF 4.00 FEET; THENCE SOUTH 89°27'23" EAST, A DISTANCE OF 12.00 FEET; THENCE SOUTH 00°32'37" WEST, A DISTANCE OF 4.00 FEET; THENCE SOUTH 89°27'23" EAST, A DISTANCE OF 15.84 FEET; THENCE NORTH 00°32'37" EAST, A DISTANCE OF 21.56 FEET; THENCE NORTH 89°45'53" EAST, A DISTANCE OF 12.00 FEET; THENCE SOUTH 00°32'37" WEST, A DISTANCE OF 21.72 FEET; THENCE SOUTH 89°27'23" EAST, A DISTANCE OF 245.34 FEET; THENCE NORTH 00°32'37" EAST, A DISTANCE OF 21.56 FEET; THENCE NORTH 89°45'53" EAST, A DISTANCE OF 12.00 FEET; THENCE SOUTH 00°32'37" WEST, A DISTANCE OF 21.72 FEET; THENCE SOUTH 89°27'23" EAST, A DISTANCE OF 192.50 FEET; THENCE SOUTH 45°02'31" EAST, A DISTANCE OF 35.88 FEET; THENCE NORTH 44°59'59" EAST, A DISTANCE OF 26.64 FEET; THENCE SOUTH 45°00'01" EAST, A DISTANCE OF 12.00 FEET; THENCE SOUTH 44°59'59" WEST, A DISTANCE OF 26.64 FEET; THENCE SOUTH 45°02'31" EAST, A DISTANCE OF 46.46 FEET; THENCE NORTH 44°57'29" EAST, A DISTANCE OF 7.36 FEET; THENCE SOUTH 45°02'31" EAST, A DISTANCE OF 12.00 FEET; THENCE SOUTH 44°57'29" WEST, A DISTANCE OF 10.35 FEET; THENCE SOUTH 01°02'35" EAST, A DISTANCE OF 14.31 FEET; THENCE NORTH 88°57'25" EAST, A DISTANCE OF 20.50 FEET; THENCE NORTH 01°02'50" WEST, A DISTANCE OF 8.60 FEET; THENCE NORTH 88°57'10" EAST, A DISTANCE OF 12.00 FEET; THENCE SOUTH 01°02'50" EAST, A DISTANCE OF 20.60 FEET; THENCE SOUTH 88°57'25" WEST, A DISTANCE OF 32.50 FEET; THENCE SOUTH 01°02'35" EAST, A DISTANCE OF 139.83 FEET; THENCE NORTH 88°57'25" EAST, A DISTANCE OF 16.99 FEET; THENCE SOUTH 01°02'35" EAST, A DISTANCE OF 12.00 FEET; THENCE SOUTH 88°57'25" WEST, A DISTANCE OF 16.99 FEET; THENCE SOUTH 01°02'35" EAST, A DISTANCE OF 121.93 FEET; THENCE NORTH 88°57'25" EAST, A DISTANCE OF 20.50 FEET; THENCE NORTH 01°02'35" WEST, A DISTANCE OF 10.66 FEET; THENCE NORTH 88°57'25" EAST, A DISTANCE OF 12.00 FEET; THENCE SOUTH 01°02'35" EAST, A DISTANCE OF 10.66 FEET; THENCE NORTH 88°57'25" EAST, A DISTANCE OF 86.42 FEET; THENCE SOUTH 44°43'58" WEST, A DISTANCE OF 17.21 FEET; THENCE SOUTH 88°57'25" WEST, A DISTANCE OF 115.10 FEET; THENCE SOUTH 00°59'34" EAST, A DISTANCE OF 12.21 FEET; THENCE NORTH 89°29'28" WEST, A DISTANCE OF 15.01 FEET; THENCE NORTH 00°59'34" WEST, A DISTANCE OF 55.24 FEET; THENCE SOUTH 88°58'34" WEST, A DISTANCE OF 8.30 FEET; THENCE NORTH 01°01'26" WEST, A DISTANCE OF 12.00 FEET; THENCE NORTH 88°58'34" EAST, A DISTANCE OF 8.26 FEET; THENCE NORTH 01°02'35" WEST, A DISTANCE OF 251.44 FEET; THENCE NORTH 45°02'31" WEST, A DISTANCE OF 69.87 FEET; THENCE NORTH 89°27'23" WEST, A DISTANCE OF 8.82 FEET; THENCE SOUTH 00°32'37" WEST, A DISTANCE OF 7.46 FEET; THENCE NORTH 89°27'23" WEST, A DISTANCE OF 12.00 FEET; THENCE NORTH 00°32'37" EAST, A DISTANCE OF 7.46 FEET; THENCE NORTH 89°27'23" WEST, A DISTANCE OF 46.25 FEET; THENCE SOUTH 00°32'37" WEST, A DISTANCE OF 13.01 FEET; THENCE NORTH 89°27'23" WEST, A DISTANCE OF 12.00 FEET; THENCE NORTH 00°32'37" EAST, A DISTANCE OF 13.01 FEET; THENCE NORTH 89°27'23" WEST, A DISTANCE OF 108.50 FEET; THENCE SOUTH 00°32'37" WEST, A DISTANCE OF 7.45 FEET; THENCE NORTH 89°27'23" WEST, A DISTANCE OF 12.00 FEET; THENCE NORTH 00°32'37" EAST, A DISTANCE OF 7.45 FEET; THENCE NORTH 89°27'23" WEST, A DISTANCE OF 35.70 FEET; THENCE SOUTH 00°32'37" WEST, A DISTANCE OF 21.68 FEET; THENCE NORTH 89°27'23" WEST, A DISTANCE OF 12.00 FEET; THENCE NORTH 00°32'37" EAST, A DISTANCE OF 21.68 FEET; THENCE NORTH 89°27'23" WEST, A DISTANCE OF 244.30 FEET; THENCE SOUTH 45°32'37" WEST, A DISTANCE OF 127.74 FEET; THENCE SOUTH 44°27'23" EAST, A DISTANCE OF 12.89 FEET; THENCE SOUTH 45°32'37" WEST, A DISTANCE OF 12.00 FEET; THENCE NORTH 44°27'23" WEST, A DISTANCE OF 12.89 FEET; THENCE SOUTH 45°32'37" WEST, A DISTANCE OF 22.48 FEET; THENCE NORTH 89°27'23" WEST, A DISTANCE OF 219.04 FEET; THENCE NORTH 01°00'34" WEST, A DISTANCE OF 133.25 FEET; THENCE NORTH 89°27'23" WEST, A DISTANCE OF 21.51 FEET; THENCE NORTH 01°00'45" WEST, A DISTANCE OF 24.73 FEET; THENCE SOUTH 88°59'26" WEST, A DISTANCE OF 13.96 FEET; THENCE NORTH 01°00'34" WEST, A DISTANCE OF 12.00 FEET; THENCE NORTH 88°59'26" EAST, A DISTANCE OF 13.96 FEET; THENCE NORTH 01°00'45" WEST, A DISTANCE OF 90.77 FEET; THENCE NORTH 45°58'54" WEST, A DISTANCE OF 114.30 FEET; THENCE NORTH 01°00'34" WEST, A DISTANCE OF 70.98 FEET; THENCE NORTH 34°25'31" EAST, A DISTANCE OF 58.31 FEET TO POINT OF BEGINNING #1.

CONTAINING 81,928 SQUARE FEET OR 1.8808 ACRES, MORE OR LESS.

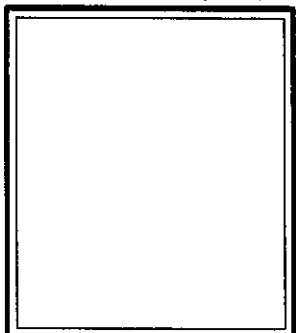
LESS:

DESCRIPTION CONTINUED ON SHEET 2 OF 7

SHEET 1 OF 7



CAULFIELD & WHEELER, INC.
 CIVIL ENGINEERING
 LANDSCAPE ARCHITECTURE - SURVEYING
 7900 GLADES ROAD - SUITE 100
 BOCA RATON, FLORIDA 33434
 PHONE (561)-392-1991 / FAX (561)-750-1452



DATE	09/29/15
DRAWN BY	DLS
F.B./ PG.	N/A
SCALE	AS SHOWN
JOB NO.	6897-GUE

**PARCEL "A", WILTON TWENTY-FOURTH STREET RESIDENCES
 GENERAL UTILITY EASEMENT
 SKETCH OF DESCRIPTION**

DESCRIPTION: (CONTINUED)

EXHIBIT "A"

A PORTION OF PARCEL "A", NEWTH PLAT, ACCORDING TO THE PLAT THEREOF AS RECORDED IN PLAT BOOK 173, PG. 36, OF THE PUBLIC RECORDS OF BROWARD COUNTY, FLORIDA, BEING MORE PARTICULARLY DESCRIBED AS FOLLOWS:

COMMENCING AT THE NORTHWEST CORNER OF SAID PARCEL A, NEWTH PLAT, THENCE, ALONG THE WEST LINE OF SAID PLAT, SOUTH 01'00'34" EAST, A DISTANCE OF 278.18 FEET; THENCE, DEPARTING SAID WEST LINE, NORTH 88'59'26" EAST, A DISTANCE OF 135.29 FEET TO POINT OF BEGINNING #2; THENCE, SOUTH 45'58'54" EAST, A DISTANCE OF 9.21 FEET; THENCE SOUTH 01'00'34" EAST, A DISTANCE OF 69.23 FEET; THENCE SOUTH 88'59'26" WEST, A DISTANCE OF 6.51 FEET; THENCE NORTH 01'00'45" WEST, A DISTANCE OF 75.75 FEET TO POINT OF BEGINNING #2.

CONTAINING 472 SQUARE FEET OR 0.0108 ACRES, MORE OR LESS.

LESS:

A PORTION OF PARCEL "A", NEWTH PLAT, ACCORDING TO THE PLAT THEREOF AS RECORDED IN PLAT BOOK 173, PG. 36, OF THE PUBLIC RECORDS OF BROWARD COUNTY, FLORIDA, BEING MORE PARTICULARLY DESCRIBED AS FOLLOWS:

COMMENCING AT THE NORTHWEST CORNER OF SAID PARCEL A, NEWTH PLAT, THENCE, ALONG THE WEST LINE OF SAID PLAT, SOUTH 01'00'34" EAST, A DISTANCE OF 400.75 FEET; THENCE, DEPARTING SAID WEST LINE, NORTH 88'59'26" EAST, A DISTANCE OF 429.31 FEET TO POINT OF BEGINNING #3; THENCE, SOUTH 89'27'23" EAST, A DISTANCE OF 471.56 FEET; THENCE SOUTH 45'02'31" EAST, A DISTANCE OF 9.29 FEET; THENCE NORTH 89'27'23" WEST, A DISTANCE OF 478.19 FEET; THENCE NORTH 00'32'37" EAST, A DISTANCE OF 6.50 FEET TO POINT OF BEGINNING #3.

CONTAINING 3,087 SQUARE FEET OR 0.0709 ACRES, MORE OR LESS.

LESS:

A PORTION OF PARCEL "A", NEWTH PLAT, ACCORDING TO THE PLAT THEREOF AS RECORDED IN PLAT BOOK 173, PG. 36, OF THE PUBLIC RECORDS OF BROWARD COUNTY, FLORIDA, BEING MORE PARTICULARLY DESCRIBED AS FOLLOWS:

COMMENCING AT THE NORTHWEST CORNER OF SAID PARCEL A, NEWTH PLAT, THENCE, ALONG THE WEST LINE OF SAID PLAT, SOUTH 01'00'34" EAST, A DISTANCE OF 425.37 FEET; THENCE, CONTINUING ALONG SAID WEST LINE, SOUTH 01'02'35" EAST, A DISTANCE OF 87.54 FEET; THENCE, DEPARTING SAID WEST LINE, NORTH 88'57'25" EAST, A DISTANCE OF 153.75 FEET TO POINT OF BEGINNING #4;

THENCE NORTH 01'00'34" WEST, A DISTANCE OF 121.25 FEET; THENCE SOUTH 89'27'23" EAST, A DISTANCE OF 326.64 FEET; THENCE SOUTH 00'32'37" WEST, A DISTANCE OF 6.50 FEET; THENCE NORTH 89'27'23" WEST, A DISTANCE OF 6.26 FEET; THENCE SOUTH 45'32'37" WEST, A DISTANCE OF 162.22 FEET; THENCE NORTH 89'27'23" WEST, A DISTANCE OF 49.62 FEET; THENCE NORTH 00'32'37" EAST, A DISTANCE OF 23.20 FEET; THENCE NORTH 89'27'23" WEST, A DISTANCE OF 12.00 FEET; THENCE SOUTH 00'32'37" WEST, A DISTANCE OF 23.20 FEET; THENCE NORTH 89'27'23" WEST, A DISTANCE OF 125.48 FEET; THENCE NORTH 00'32'37" EAST, A DISTANCE OF 7.45 FEET; THENCE NORTH 89'27'23" WEST, A DISTANCE OF 12.00 FEET; THENCE SOUTH 00'32'37" WEST, A DISTANCE OF 7.45 FEET; THENCE NORTH 89'27'23" WEST, A DISTANCE OF 3.29 FEET TO THE POINT OF BEGINNING #4.

CONTAINING 31,727 SQUARE FEET OR 0.7283 ACRES, MORE OR LESS.

SAID LANDS SITUATE IN THE CITY OF MARGATE, BROWARD COUNTY, FLORIDA.

TOTAL AREA OF LANDS DESCRIBED 46,642 SQUARE FEET OR 1.0708 ACRES, MORE OR LESS.

SUBJECT TO EASEMENTS, RESTRICTIONS, RESERVATIONS, COVENANTS, AND RIGHTS-OF-WAY OF RECORD.


NOTES:

1. REPRODUCTIONS OF THIS SKETCH ARE NOT VALID UNLESS SEALED WITH AN EMBOSSED SURVEYOR'S SEAL.
2. LANDS SHOWN HEREON WERE NOT ABSTRACTED FOR RIGHTS-OF-WAY, EASEMENTS, OWNERSHIP, OR OTHER INSTRUMENTS OF RECORD.
3. BEARINGS SHOWN HEREON ARE BASED ON THE WEST LINE OF PARCEL "A", NEWTH PLAT HAVING A BEARING OF NORTH 01'00'34" WEST.
4. THE "LAND DESCRIPTION" HEREON WAS PREPARED BY THE SURVEYOR.
5. DATA SHOWN HEREON WAS COMPILED FROM INSTRUMENTS OF RECORD AND DOES NOT CONSTITUTE A BOUNDARY SURVEY AS SUCH.

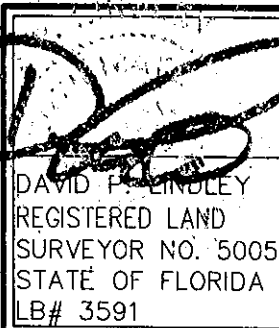
CERTIFICATE:

I HEREBY CERTIFY THAT THE ATTACHED SKETCH OF DESCRIPTION OF THE HEREON DESCRIBED PROPERTY IS TRUE AND CORRECT TO THE BEST OF MY KNOWLEDGE AND BELIEF AS PREPARED UNDER MY DIRECTION ON AUGUST 31, 2015. I FURTHER CERTIFY THAT THIS SKETCH OF DESCRIPTION MEETS THE STANDARDS OF PRACTICE SET FORTH IN CHAPTER 5J-17 ADOPTED BY THE FLORIDA BOARD OF SURVEYORS AND MAPPERS PURSUANT TO FLORIDA STATUTES 472.027.

SHEET 2 OF 7



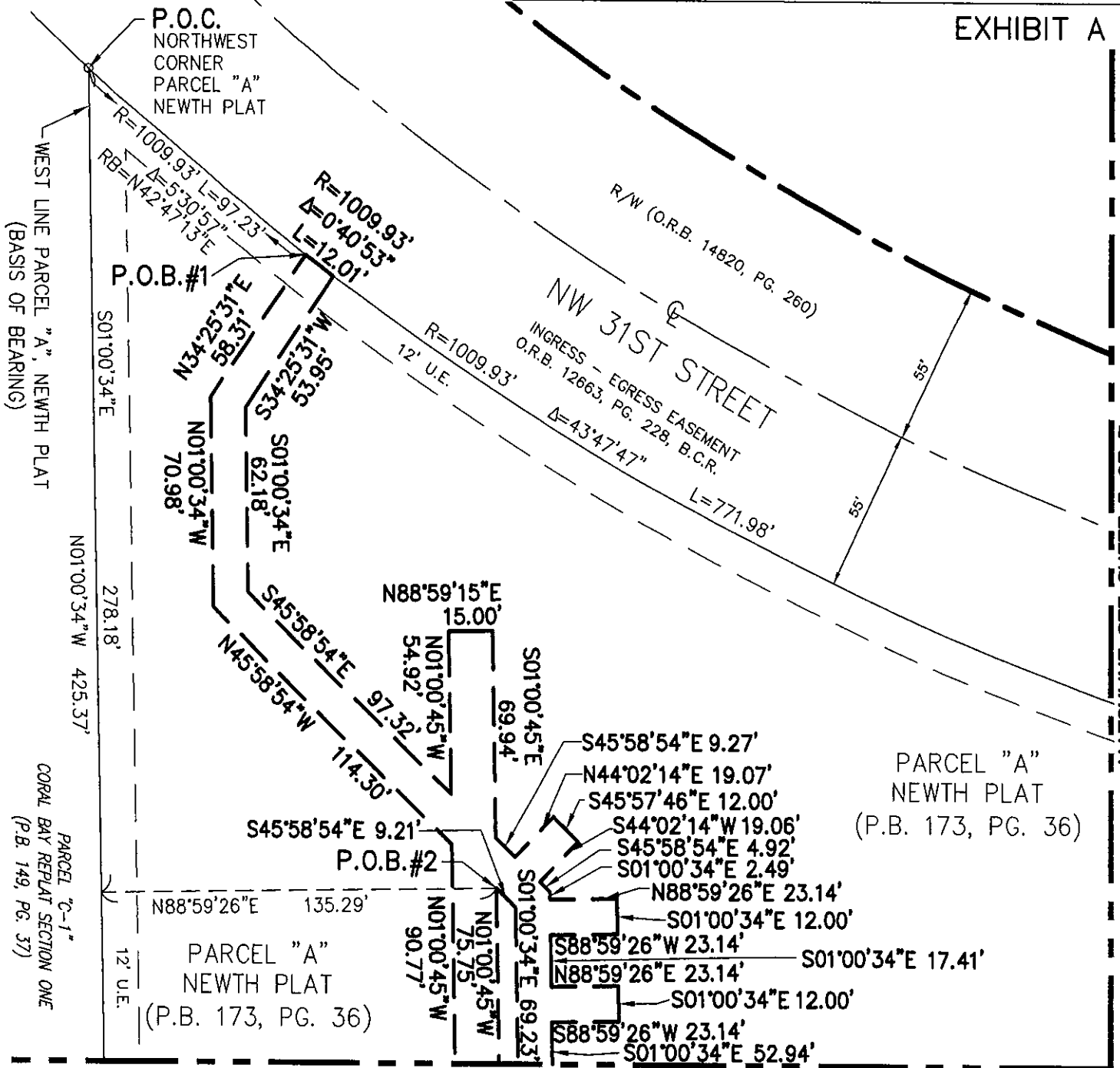
CAULFIELD & WHEELER, INC.
 CIVIL ENGINEERING
 LANDSCAPE ARCHITECTURE - SURVEYING
 7900 GLADES ROAD - SUITE 100
 BOCA RATON, FLORIDA 33434
 PHONE (561)-392-1991 / FAX (561)-750-1452



DAVID P. LINDLEY
 REGISTERED LAND
 SURVEYOR NO. 5005
 STATE OF FLORIDA
 LB# 3591

DATE	09/29/15
DRAWN BY	DLS
F.B. / PG.	N/A
SCALE	AS SHOWN
JOB NO.	6897-GUE

**PARCEL "A", WILTON TWENTY-FOURTH STREET RESIDENCES
 GENERAL UTILITY EASEMENT
 SKETCH OF DESCRIPTION**



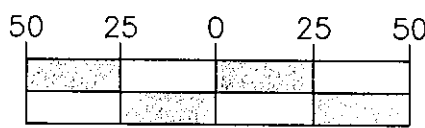
MATCHLINE SEE SHEET 5 OF 7

MATCHLINE SEE SHEET 4 OF 7

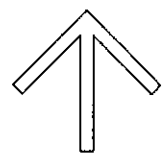
LEGEND/ABBREVIATIONS

- B.C.R. - BROWARD COUNTY RECORDS
- ⊙ - CENTERLINE
- Δ - DELTA ANGLE
- L - ARC LENGTH
- LB - LICENSED BUSINESS
- P.O.B. - POINT OF BEGINNING
- P.O.C. - POINT OF COMMENCEMENT
- R - RADIUS
- U.E. - UTILITY EASEMENT

--- NON-VEHICULAR ACCESS LINE



GRAPHIC SCALE (IN FEET)

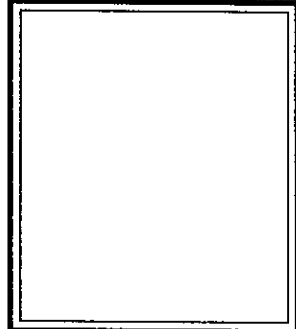


NORTH

SHEET 3 OF 7



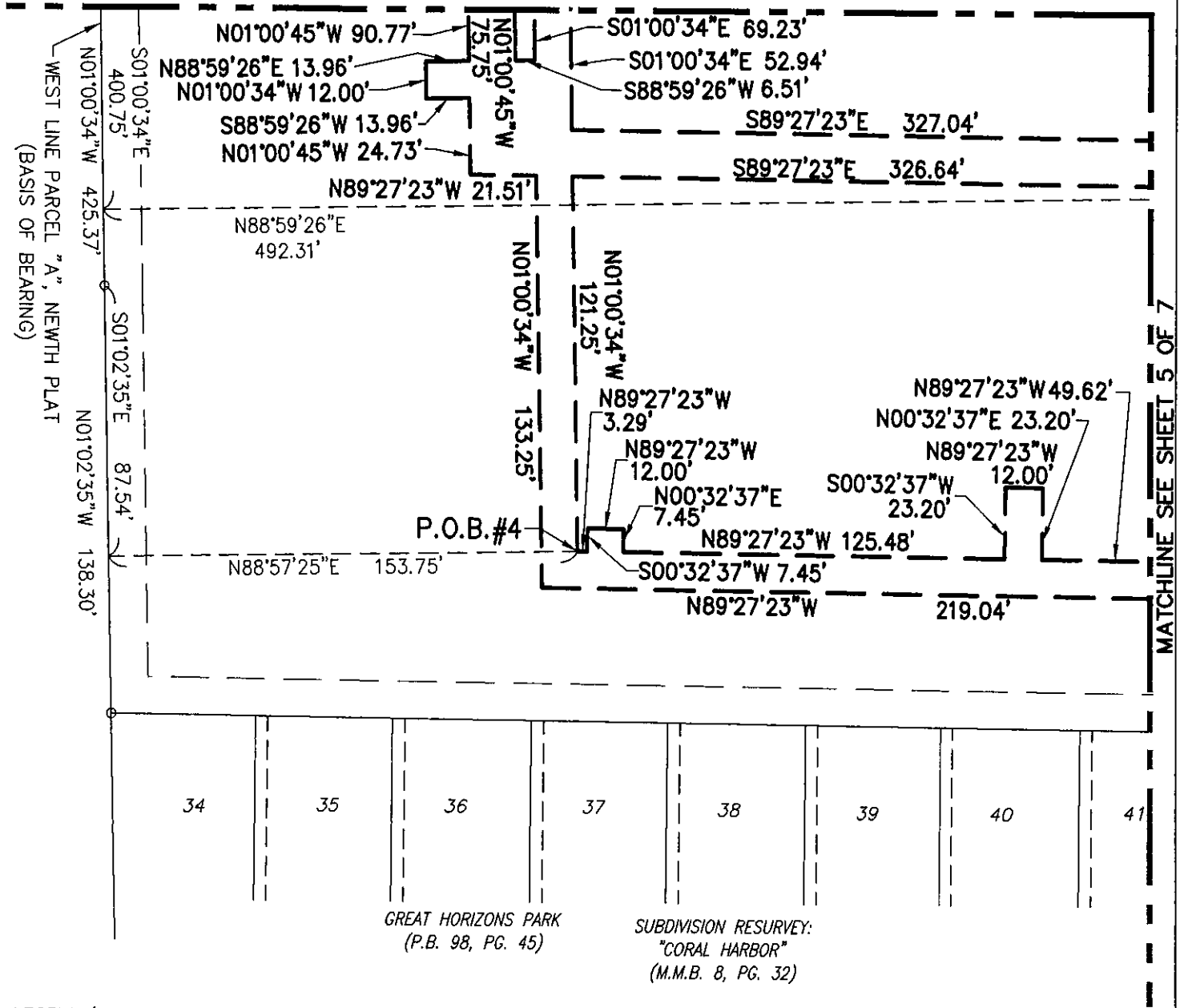
CAULFIELD & WHEELER, INC.
 CIVIL ENGINEERING
 LANDSCAPE ARCHITECTURE - SURVEYING
 7900 GLADES ROAD - SUITE 100
 BOCA RATON, FLORIDA 33434
 PHONE (561)-392-1991 / FAX (561)-750-1452



DATE	09/29/15
DRAWN BY	DLS
F.B./ PG.	N/A
SCALE	AS SHOWN
JOB NO.	6897-GUE

**PARCEL "A", WILTON TWENTY-FOURTH STREET RESIDENCES
GENERAL UTILITY EASEMENT
SKETCH OF DESCRIPTION**

MATCHLINE SEE SHEET 3 OF 7

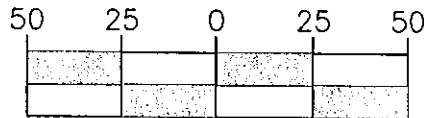


MATCHLINE SEE SHEET 5 OF 7

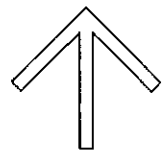
LEGEND/ABBREVIATIONS

- B.C.R. - BROWARD COUNTY RECORDS
- ⊕ - CENTERLINE
- Δ - DELTA ANGLE
- L - ARC LENGTH
- LB - LICENSED BUSINESS
- P.O.B. - POINT OF BEGINNING
- P.O.C. - POINT OF COMMENCEMENT
- R - RADIUS
- U.E. - UTILITY EASEMENT

NON-VEHICULAR ACCESS LINE



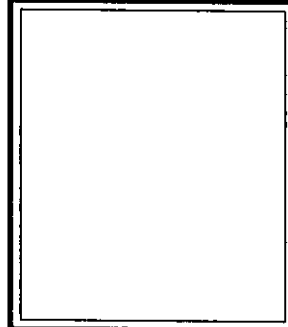
GRAPHIC SCALE
(IN FEET)



NORTH

SHEET 4 OF 7

CAULFIELD & WHEELER, INC.
 CIVIL ENGINEERING
 LANDSCAPE ARCHITECTURE - SURVEYING
 7900 GLADES ROAD - SUITE 100
 BOCA RATON, FLORIDA 33434
 PHONE (561)-392-1991 / FAX (561)-750-1452



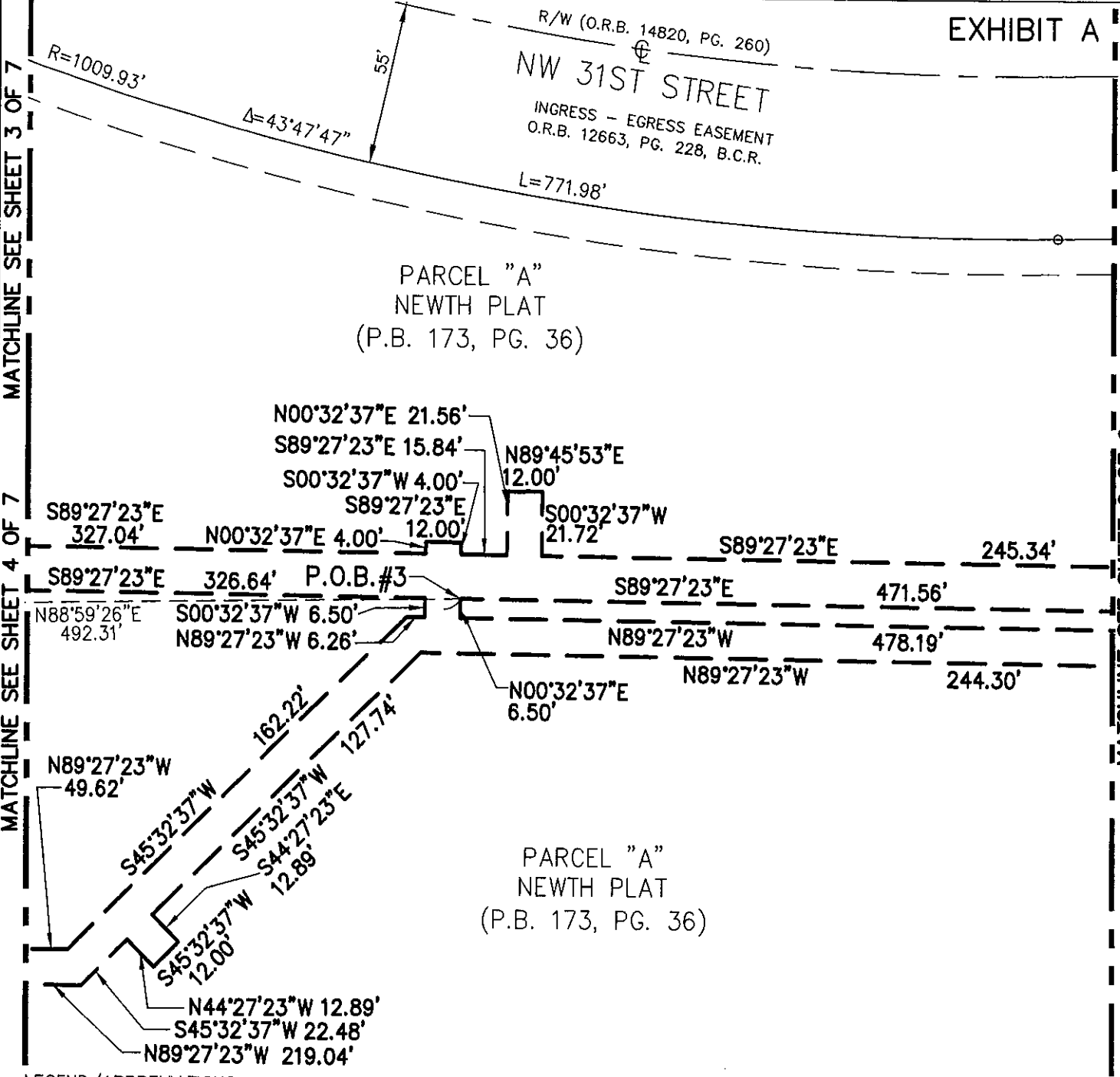
DATE	09/29/15
DRAWN BY	DLS
F.B./ PG.	N/A
SCALE	AS SHOWN
JOB NO.	6897-GUE

PARCEL "A", WILTON TWENTY-FOURTH STREET RESIDENCES
 GENERAL UTILITY EASEMENT
 SKETCH OF DESCRIPTION

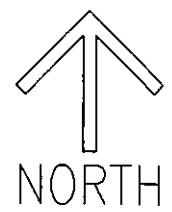
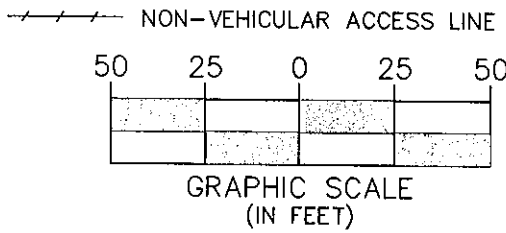
MATCHLINE SEE SHEET 3 OF 7


MATCHLINE SEE SHEET 4 OF 7

MATCHLINE SEE SHEET 6 OF 9

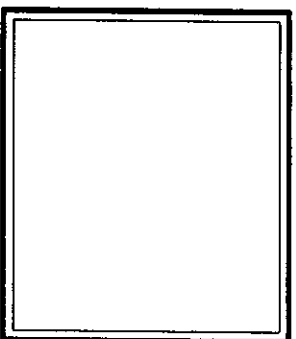


- LEGEND/ABBREVIATIONS**
- B.C.R. - BROWARD COUNTY RECORDS
 - ⊕ - CENTERLINE
 - Δ - DELTA ANGLE
 - L - ARC LENGTH
 - LB - LICENSED BUSINESS
 - P.O.B. - POINT OF BEGINNING
 - P.O.C. - POINT OF COMMENCEMENT
 - R - RADIUS
 - U.E. - UTILITY EASEMENT





CAULFIELD & WHEELER, INC.
CIVIL ENGINEERING
LANDSCAPE ARCHITECTURE - SURVEYING
7900 GLADES ROAD - SUITE 100
BOCA RATON, FLORIDA 33434
PHONE (561)-392-1991 / FAX (561)-750-1452



DATE	09/29/15
DRAWN BY	DLS
F.B./ PG.	N/A
SCALE	AS SHOWN
JOB NO.	6897-GUE

**PARCEL "A", WILTON TWENTY-FOURTH STREET RESIDENCES
GENERAL UTILITY EASEMENT
SKETCH OF DESCRIPTION**

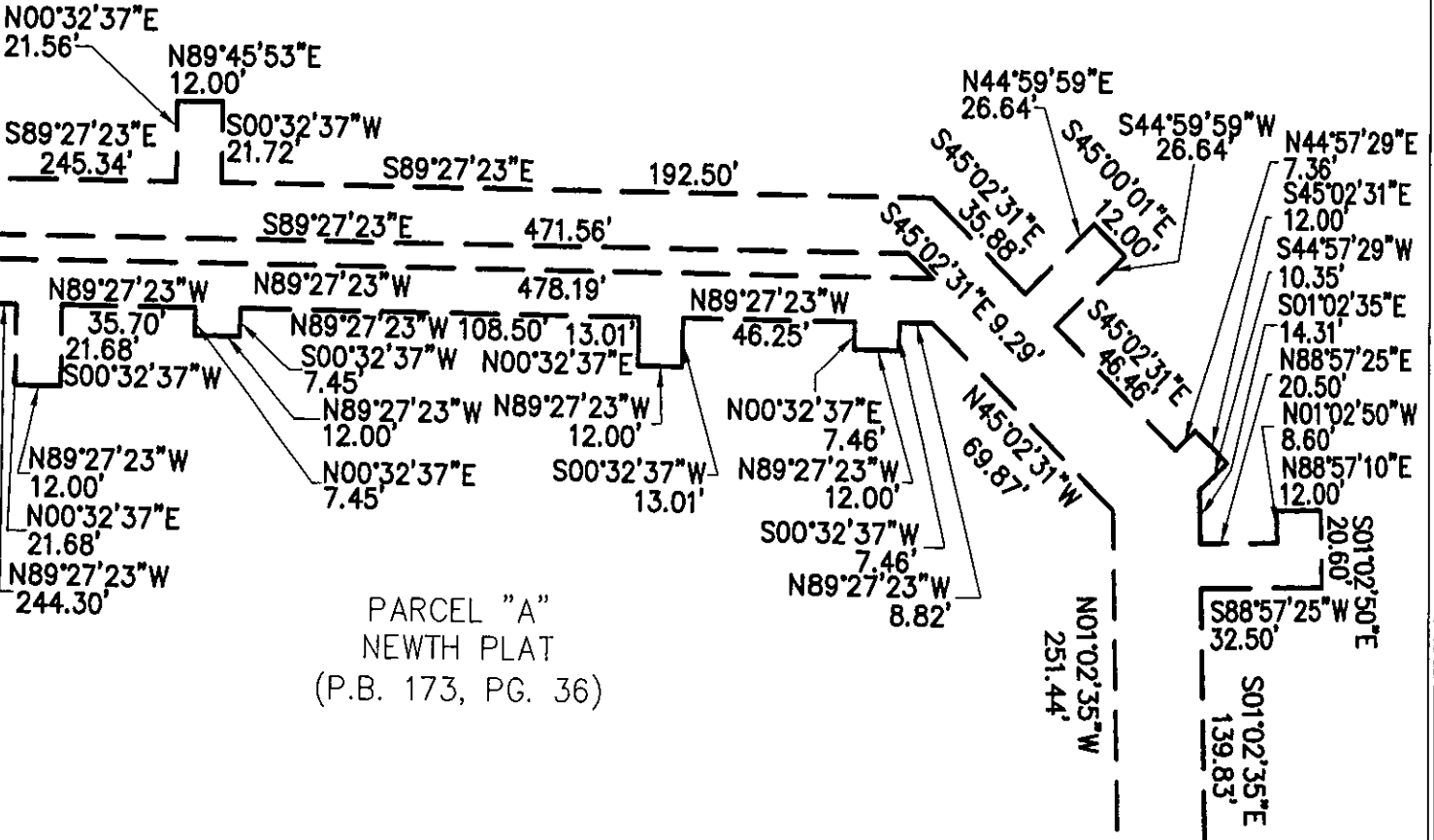
MATCHLINE SEE SHEET 5 OF 7

NW 31ST STREET

INGRESS - EGRESS EASEMENT
O.R.B. 12663, PG. 228, B.C.R.

N88°59'26"E 415.07'
12' U.E. 300'

PARCEL "A"
NEWTH PLAT
(P.B. 173, PG. 36)



PARCEL "A"
NEWTH PLAT
(P.B. 173, PG. 36)

LEGEND/ABBREVIATIONS

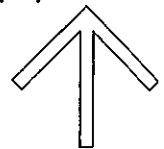
- B.C.R. - BROWARD COUNTY RECORDS
- ⊙ - CENTERLINE
- Δ - DELTA ANGLE
- L - ARC LENGTH
- LB - LICENSED BUSINESS
- P.O.B. - POINT OF BEGINNING
- P.O.C. - POINT OF COMMENCEMENT
- R - RADIUS
- U.E. - UTILITY EASEMENT

MATCHLINE SEE SHEET 7 OF 7

NON-VEHICULAR ACCESS LINE



GRAPHIC SCALE
(IN FEET)



NORTH

SHEET 6 OF 7



CAULFIELD & WHEELER, INC.

CIVIL ENGINEERING
 LANDSCAPE ARCHITECTURE - SURVEYING
 7900 GLADES ROAD - SUITE 100
 BOCA RATON, FLORIDA 33434
 PHONE (561)-392-1991 / FAX (561)-750-1452

PARCEL "A", WILTON TWENTY-FOURTH STREET RESIDENCES
 GENERAL UTILITY EASEMENT
 SKETCH OF DESCRIPTION

DATE 09/29/15

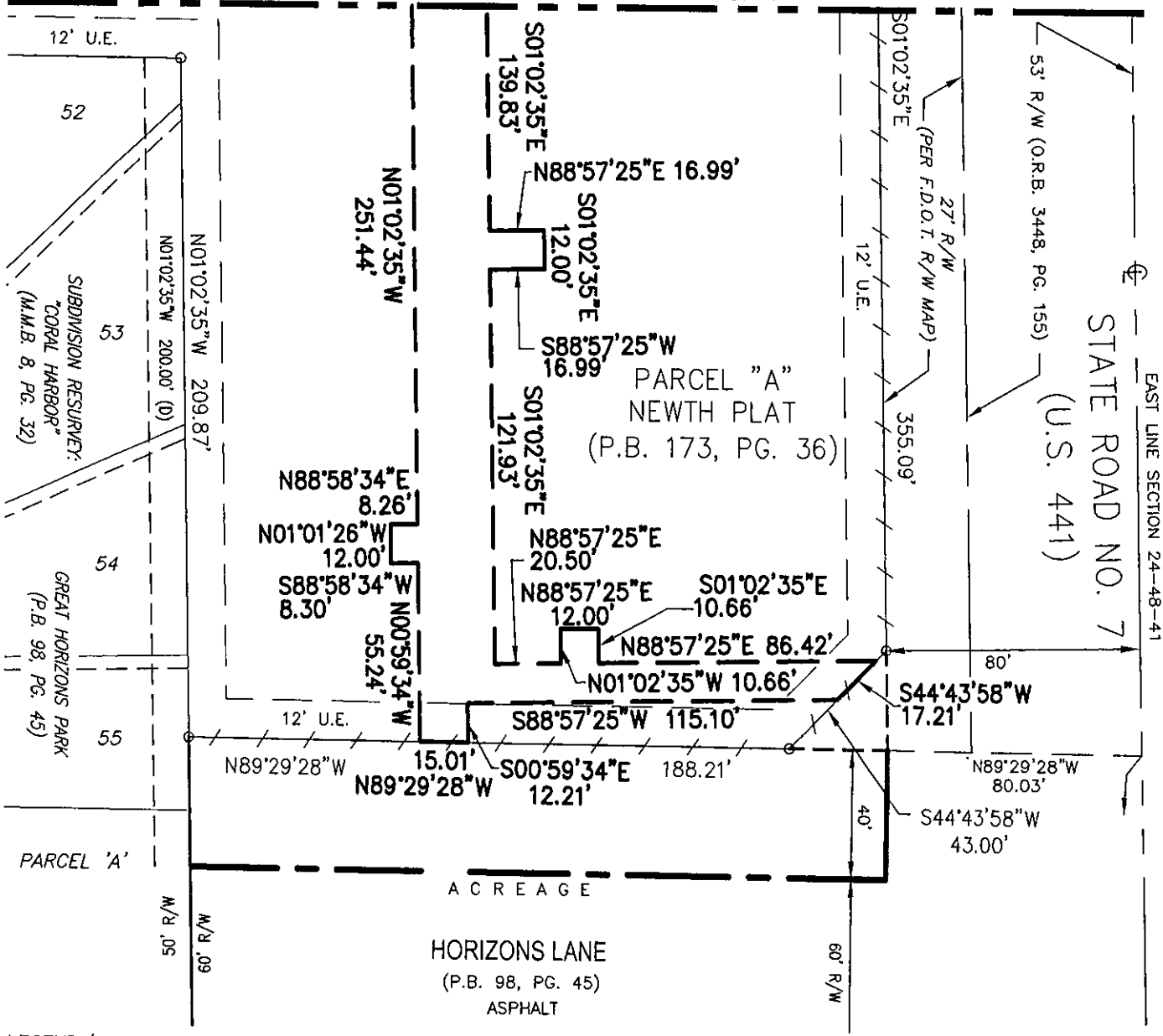
DRAWN BY DLS

F.B./ PG. N/A

SCALE AS SHOWN

JOB NO. 6897-GUE

MATCHLINE SEE SHEET 6 OF 7



STATE ROAD NO. 7
(U.S. 441)

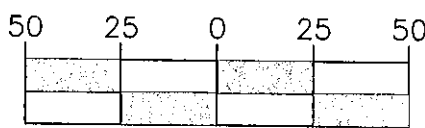
PARCEL "A"
NEWITH PLAT
(P.B. 173, PG. 36)

HORIZONS LANE
(P.B. 98, PG. 45)
ASPHALT

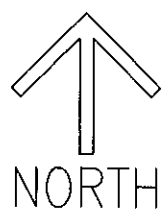
LEGEND/ABBREVIATIONS

- B.C.R. - BROWARD COUNTY RECORDS
- ⊕ - CENTERLINE
- Δ - DELTA ANGLE
- L - ARC LENGTH
- LB - LICENSED BUSINESS
- P.O.B. - POINT OF BEGINNING
- P.O.C. - POINT OF COMMENCEMENT
- R - RADIUS
- U.E. - UTILITY EASEMENT

NON-VEHICULAR ACCESS LINE



GRAPHIC SCALE
(IN FEET)



SHEET 7 OF 7

CAULFIELD & WHEELER, INC.
 CIVIL ENGINEERING
 LANDSCAPE ARCHITECTURE - SURVEYING
 7900 GLADES ROAD - SUITE 100
 BOCA RATON, FLORIDA 33434
 PHONE (561)-392-1991 / FAX (561)-750-1452

**PARCEL "A", WILTON TWENTY-FOURTH STREET RESIDENCES
 GENERAL UTILITY EASEMENT
 SKETCH OF DESCRIPTION**

DATE	09/29/15
DRAWN BY	DLS
F.B./ PG.	N/A
SCALE	AS SHOWN
JOB NO.	6897-GUE

DESCRIPTION:

A PORTION OF PARCEL "A", NEWTH PLAT, ACCORDING TO THE PLAT THEREOF AS RECORDED IN PLAT BOOK 173, PG. 36, OF THE PUBLIC RECORDS OF BROWARD COUNTY, FLORIDA, BEING MORE PARTICULARLY DESCRIBED AS FOLLOWS:

COMMENCING AT THE NORTHWEST CORNER OF SAID PARCEL A, NEWTH PLAT, BEING A POINT ON THE A CURVE CONCAVE TO THE NORTHEAST HAVING A RADIUS OF 1009.93 FEET, FROM WHICH A RADIAL LINE BEARS NORTH 42°47'13" EAST; SAID POINT ALSO BEING ON THE SOUTHERLY RIGHT-OF-WAY LINE OF NW 31ST STREET; THENCE SOUTHEASTERLY, ALONG SAID RIGHT-OF-WAY LINE, ALONG THE ARC OF SAID CURVE THROUGH A CENTRAL ANGLE OF 5°30'57", A DISTANCE OF 97.23 FEET TO POINT OF BEGINNING #1;


THENCE, CONTINUING ALONG SAID RIGHT-OF-WAY LINE, ALONG SAID CURVE CONCAVE TO THE NORTHEAST HAVING A RADIUS OF 1009.93 FEET, THROUGH A CENTRAL ANGLE OF 0°40'53", A DISTANCE OF 12.01 FEET; THENCE, DEPARTING SAID SOUTHERLY RIGHT-OF-WAY LINE, SOUTH 34°25'31" WEST, A DISTANCE OF 53.95 FEET; THENCE SOUTH 01°00'34" EAST, A DISTANCE OF 62.18 FEET; THENCE SOUTH 45°58'54" EAST, A DISTANCE OF 97.32 FEET; THENCE NORTH 01°00'45" WEST, A DISTANCE OF 54.92 FEET; THENCE NORTH 88°59'15" EAST, A DISTANCE OF 15.00 FEET; THENCE SOUTH 01°00'45" EAST, A DISTANCE OF 69.94 FEET; THENCE SOUTH 45°58'54" EAST, A DISTANCE OF 9.27 FEET; THENCE NORTH 44°02'14" EAST, A DISTANCE OF 19.07 FEET; THENCE SOUTH 45°57'46" EAST, A DISTANCE OF 12.00 FEET; THENCE SOUTH 44°02'14" WEST, A DISTANCE OF 19.06 FEET; THENCE SOUTH 45°58'54" EAST, A DISTANCE OF 4.92 FEET; THENCE SOUTH 01°00'34" EAST, A DISTANCE OF 2.49 FEET; THENCE NORTH 88°59'26" EAST, A DISTANCE OF 23.14 FEET; THENCE SOUTH 01°00'34" EAST, A DISTANCE OF 12.00 FEET; THENCE SOUTH 88°59'26" WEST, A DISTANCE OF 23.14 FEET; THENCE SOUTH 01°00'34" EAST, A DISTANCE OF 17.41 FEET; THENCE NORTH 88°59'26" EAST, A DISTANCE OF 23.14 FEET; THENCE SOUTH 01°00'34" EAST, A DISTANCE OF 12.00 FEET; THENCE SOUTH 88°59'26" WEST, A DISTANCE OF 23.14 FEET; THENCE SOUTH 01°00'34" EAST, A DISTANCE OF 52.94 FEET; THENCE SOUTH 89°27'23" EAST, A DISTANCE OF 327.04 FEET; THENCE NORTH 00°32'37" EAST, A DISTANCE OF 4.00 FEET; THENCE SOUTH 89°27'23" EAST, A DISTANCE OF 12.00 FEET; THENCE SOUTH 00°32'37" WEST, A DISTANCE OF 4.00 FEET; THENCE SOUTH 89°27'23" EAST, A DISTANCE OF 15.84 FEET; THENCE NORTH 00°32'37" EAST, A DISTANCE OF 21.56 FEET; THENCE NORTH 89°45'53" EAST, A DISTANCE OF 12.00 FEET; THENCE SOUTH 00°32'37" WEST, A DISTANCE OF 21.72 FEET; THENCE SOUTH 89°27'23" EAST, A DISTANCE OF 245.34 FEET; THENCE NORTH 00°32'37" EAST, A DISTANCE OF 21.56 FEET; THENCE NORTH 89°45'53" EAST, A DISTANCE OF 12.00 FEET; THENCE SOUTH 00°32'37" WEST, A DISTANCE OF 21.72 FEET; THENCE SOUTH 89°27'23" EAST, A DISTANCE OF 192.50 FEET; THENCE SOUTH 45°02'31" EAST, A DISTANCE OF 35.88 FEET; THENCE NORTH 44°59'59" EAST, A DISTANCE OF 26.64 FEET; THENCE SOUTH 45°00'01" EAST, A DISTANCE OF 12.00 FEET; THENCE SOUTH 44°59'59" WEST, A DISTANCE OF 26.64 FEET; THENCE SOUTH 45°02'31" EAST, A DISTANCE OF 46.46 FEET; THENCE NORTH 44°57'29" EAST, A DISTANCE OF 7.36 FEET; THENCE SOUTH 45°02'31" EAST, A DISTANCE OF 12.00 FEET; THENCE SOUTH 44°57'29" WEST, A DISTANCE OF 10.35 FEET; THENCE SOUTH 01°02'35" EAST, A DISTANCE OF 14.31 FEET; THENCE NORTH 88°57'25" EAST, A DISTANCE OF 20.50 FEET; THENCE NORTH 01°02'50" WEST, A DISTANCE OF 8.60 FEET; THENCE NORTH 88°57'10" EAST, A DISTANCE OF 12.00 FEET; THENCE SOUTH 01°02'50" EAST, A DISTANCE OF 20.60 FEET; THENCE SOUTH 88°57'25" WEST, A DISTANCE OF 32.50 FEET; THENCE SOUTH 01°02'35" EAST, A DISTANCE OF 139.83 FEET; THENCE NORTH 88°57'25" EAST, A DISTANCE OF 16.99 FEET; THENCE SOUTH 01°02'35" EAST, A DISTANCE OF 12.00 FEET; THENCE SOUTH 88°57'25" WEST, A DISTANCE OF 16.99 FEET; THENCE SOUTH 01°02'35" EAST, A DISTANCE OF 121.93 FEET; THENCE NORTH 88°57'25" EAST, A DISTANCE OF 20.50 FEET; THENCE NORTH 01°02'35" WEST, A DISTANCE OF 10.66 FEET; THENCE NORTH 88°57'25" EAST, A DISTANCE OF 12.00 FEET; THENCE SOUTH 01°02'35" EAST, A DISTANCE OF 10.66 FEET; THENCE NORTH 88°57'25" EAST, A DISTANCE OF 86.42 FEET; THENCE SOUTH 44°43'58" WEST, A DISTANCE OF 17.21 FEET; THENCE SOUTH 88°57'25" WEST, A DISTANCE OF 115.10 FEET; THENCE SOUTH 00°59'34" EAST, A DISTANCE OF 12.21 FEET; THENCE NORTH 89°29'28" WEST, A DISTANCE OF 15.01 FEET; THENCE NORTH 00°59'34" WEST, A DISTANCE OF 55.24 FEET; THENCE SOUTH 88°58'34" WEST, A DISTANCE OF 8.30 FEET; THENCE NORTH 01°01'26" WEST, A DISTANCE OF 12.00 FEET; THENCE NORTH 88°58'34" EAST, A DISTANCE OF 8.26 FEET; THENCE NORTH 01°02'35" WEST, A DISTANCE OF 251.44 FEET; THENCE NORTH 45°02'31" WEST, A DISTANCE OF 69.87 FEET; THENCE NORTH 89°27'23" WEST, A DISTANCE OF 8.82 FEET; THENCE SOUTH 00°32'37" WEST, A DISTANCE OF 7.46 FEET; THENCE NORTH 89°27'23" WEST, A DISTANCE OF 12.00 FEET; THENCE NORTH 00°32'37" EAST, A DISTANCE OF 7.46 FEET; THENCE NORTH 89°27'23" WEST, A DISTANCE OF 46.25 FEET; THENCE SOUTH 00°32'37" WEST, A DISTANCE OF 13.01 FEET; THENCE NORTH 89°27'23" WEST, A DISTANCE OF 12.00 FEET; THENCE NORTH 00°32'37" EAST, A DISTANCE OF 13.01 FEET; THENCE NORTH 89°27'23" WEST, A DISTANCE OF 108.50 FEET; THENCE SOUTH 00°32'37" WEST, A DISTANCE OF 7.45 FEET; THENCE NORTH 89°27'23" WEST, A DISTANCE OF 12.00 FEET; THENCE NORTH 00°32'37" EAST, A DISTANCE OF 7.45 FEET; THENCE NORTH 89°27'23" WEST, A DISTANCE OF 35.70 FEET; THENCE SOUTH 00°32'37" WEST, A DISTANCE OF 21.68 FEET; THENCE NORTH 89°27'23" WEST, A DISTANCE OF 12.00 FEET; THENCE NORTH 00°32'37" EAST, A DISTANCE OF 21.68 FEET; THENCE NORTH 89°27'23" WEST, A DISTANCE OF 244.30 FEET; THENCE SOUTH 45°32'37" WEST, A DISTANCE OF 127.74 FEET; THENCE SOUTH 44°27'23" EAST, A DISTANCE OF 12.89 FEET; THENCE SOUTH 45°32'37" WEST, A DISTANCE OF 12.00 FEET; THENCE NORTH 44°27'23" WEST, A DISTANCE OF 12.89 FEET; THENCE SOUTH 45°32'37" WEST, A DISTANCE OF 22.48 FEET; THENCE NORTH 89°27'23" WEST, A DISTANCE OF 219.04 FEET; THENCE NORTH 01°00'34" WEST, A DISTANCE OF 133.25 FEET; THENCE NORTH 89°27'23" WEST, A DISTANCE OF 21.51 FEET; THENCE NORTH 01°00'45" WEST, A DISTANCE OF 24.73 FEET; THENCE SOUTH 88°59'26" WEST, A DISTANCE OF 13.96 FEET; THENCE NORTH 01°00'34" WEST, A DISTANCE OF 12.00 FEET; THENCE NORTH 88°59'26" EAST, A DISTANCE OF 13.96 FEET; THENCE NORTH 01°00'45" WEST, A DISTANCE OF 90.77 FEET; THENCE NORTH 45°58'54" WEST, A DISTANCE OF 114.30 FEET; THENCE NORTH 01°00'34" WEST, A DISTANCE OF 70.98 FEET; THENCE NORTH 34°25'31" EAST, A DISTANCE OF 58.31 FEET TO POINT OF BEGINNING #1.

CONTAINING 81,928 SQUARE FEET OR 1.8808 ACRES, MORE OR LESS.

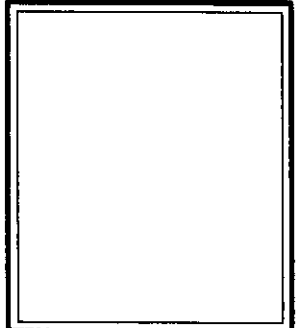
LESS:

DESCRIPTION CONTINUED ON SHEET 2 OF 7

SHEET 1 OF 7



CAULFIELD & WHEELER, INC.
 CIVIL ENGINEERING
 LANDSCAPE ARCHITECTURE - SURVEYING
 7900 GLADES ROAD - SUITE 100
 BOCA RATON, FLORIDA 33434
 PHONE (561)-392-1991 / FAX (561)-750-1452



DATE	09/29/15
DRAWN BY	DLS
F.B./ PG.	N/A
SCALE	AS SHOWN
JOB NO.	6897-GUE

**PARCEL "A", WILTON TWENTY-FOURTH STREET RESIDENCES
 GENERAL UTILITY EASEMENT
 SKETCH OF DESCRIPTION**

DESCRIPTION: (CONTINUED)

EXHIBIT "B"

A PORTION OF PARCEL "A", NEWTH PLAT, ACCORDING TO THE PLAT THEREOF AS RECORDED IN PLAT BOOK 173, PG. 36, OF THE PUBLIC RECORDS OF BROWARD COUNTY, FLORIDA, BEING MORE PARTICULARLY DESCRIBED AS FOLLOWS:

COMMENCING AT THE NORTHWEST CORNER OF SAID PARCEL A, NEWTH PLAT, THENCE, ALONG THE WEST LINE OF SAID PLAT, SOUTH 01°00'34" EAST, A DISTANCE OF 278.18 FEET; THENCE, DEPARTING SAID WEST LINE, NORTH 88°59'26" EAST, A DISTANCE OF 135.29 FEET TO POINT OF BEGINNING #2; THENCE, SOUTH 45°58'54" EAST, A DISTANCE OF 9.21 FEET; THENCE SOUTH 01°00'34" EAST, A DISTANCE OF 69.23 FEET; THENCE SOUTH 88°59'26" WEST, A DISTANCE OF 6.51 FEET; THENCE NORTH 01°00'45" WEST, A DISTANCE OF 75.75 FEET TO POINT OF BEGINNING #2.

CONTAINING 472 SQUARE FEET OR 0.0108 ACRES, MORE OR LESS.

LESS:

A PORTION OF PARCEL "A", NEWTH PLAT, ACCORDING TO THE PLAT THEREOF AS RECORDED IN PLAT BOOK 173, PG. 36, OF THE PUBLIC RECORDS OF BROWARD COUNTY, FLORIDA, BEING MORE PARTICULARLY DESCRIBED AS FOLLOWS:

COMMENCING AT THE NORTHWEST CORNER OF SAID PARCEL A, NEWTH PLAT, THENCE, ALONG THE WEST LINE OF SAID PLAT, SOUTH 01°00'34" EAST, A DISTANCE OF 400.75 FEET; THENCE, DEPARTING SAID WEST LINE, NORTH 88°59'26" EAST, A DISTANCE OF 429.31 FEET TO POINT OF BEGINNING #3; THENCE, SOUTH 89°27'23" EAST, A DISTANCE OF 471.56 FEET; THENCE SOUTH 45°02'31" EAST, A DISTANCE OF 9.29 FEET; THENCE NORTH 89°27'23" WEST, A DISTANCE OF 478.19 FEET; THENCE NORTH 00°32'37" EAST, A DISTANCE OF 6.50 FEET TO POINT OF BEGINNING #3.

CONTAINING 3,087 SQUARE FEET OR 0.0709 ACRES, MORE OR LESS.

LESS:

A PORTION OF PARCEL "A", NEWTH PLAT, ACCORDING TO THE PLAT THEREOF AS RECORDED IN PLAT BOOK 173, PG. 36, OF THE PUBLIC RECORDS OF BROWARD COUNTY, FLORIDA, BEING MORE PARTICULARLY DESCRIBED AS FOLLOWS:

COMMENCING AT THE NORTHWEST CORNER OF SAID PARCEL A, NEWTH PLAT, THENCE, ALONG THE WEST LINE OF SAID PLAT, SOUTH 01°00'34" EAST, A DISTANCE OF 425.37 FEET; THENCE, CONTINUING ALONG SAID WEST LINE, SOUTH 01°02'35" EAST, A DISTANCE OF 87.54 FEET; THENCE, DEPARTING SAID WEST LINE, NORTH 88°57'25" EAST, A DISTANCE OF 153.75 FEET TO POINT OF BEGINNING #4;

THENCE NORTH 01°00'34" WEST, A DISTANCE OF 121.25 FEET; THENCE SOUTH 89°27'23" EAST, A DISTANCE OF 326.64 FEET; THENCE SOUTH 00°32'37" WEST, A DISTANCE OF 6.50 FEET; THENCE NORTH 89°27'23" WEST, A DISTANCE OF 6.26 FEET; THENCE SOUTH 45°32'37" WEST, A DISTANCE OF 162.22 FEET; THENCE NORTH 89°27'23" WEST, A DISTANCE OF 49.62 FEET; THENCE NORTH 00°32'37" EAST, A DISTANCE OF 23.20 FEET; THENCE NORTH 89°27'23" WEST, A DISTANCE OF 12.00 FEET; THENCE SOUTH 00°32'37" WEST, A DISTANCE OF 23.20 FEET; THENCE NORTH 89°27'23" WEST, A DISTANCE OF 125.48 FEET; THENCE NORTH 00°32'37" EAST, A DISTANCE OF 7.45 FEET; THENCE NORTH 89°27'23" WEST, A DISTANCE OF 12.00 FEET; THENCE SOUTH 00°32'37" WEST, A DISTANCE OF 7.45 FEET; THENCE NORTH 89°27'23" WEST, A DISTANCE OF 3.29 FEET TO THE POINT OF BEGINNING #4.

CONTAINING 31,727 SQUARE FEET OR 0.7283 ACRES, MORE OR LESS.

SAID LANDS SITUATE IN THE CITY OF MARGATE, BROWARD COUNTY, FLORIDA.

TOTAL AREA OF LANDS DESCRIBED 46,642 SQUARE FEET OR 1.0708 ACRES, MORE OR LESS.

SUBJECT TO EASEMENTS, RESTRICTIONS, RESERVATIONS, COVENANTS, AND RIGHTS-OF-WAY OF RECORD.

NOTES:

1. REPRODUCTIONS OF THIS SKETCH ARE NOT VALID UNLESS SEALED WITH AN EMBOSSED SURVEYOR'S SEAL.
2. LANDS SHOWN HEREON WERE NOT ABSTRACTED FOR RIGHTS-OF-WAY, EASEMENTS, OWNERSHIP, OR OTHER INSTRUMENTS OF RECORD.
3. BEARINGS SHOWN HEREON ARE BASED ON THE WEST LINE OF PARCEL "A", NEWTH PLAT HAVING A BEARING OF NORTH 01°00'34" WEST.
4. THE "LAND DESCRIPTION" HEREON WAS PREPARED BY THE SURVEYOR.
5. DATA SHOWN HEREON WAS COMPILED FROM INSTRUMENTS OF RECORD AND DOES NOT CONSTITUTE A BOUNDARY SURVEY AS SUCH.

CERTIFICATE:

I HEREBY CERTIFY THAT THE ATTACHED SKETCH OF DESCRIPTION OF THE HEREON DESCRIBED PROPERTY IS TRUE AND CORRECT TO THE BEST OF MY KNOWLEDGE AND BELIEF AS PREPARED UNDER MY DIRECTION ON AUGUST 31, 2015. I FURTHER CERTIFY THAT THIS SKETCH OF DESCRIPTION MEETS THE STANDARDS OF PRACTICE SET FORTH IN CHAPTER 5J-17 ADOPTED BY THE FLORIDA BOARD OF SURVEYORS AND MAPPERS PURSUANT TO FLORIDA STATUTES 472.027.

SHEET 2 OF 7

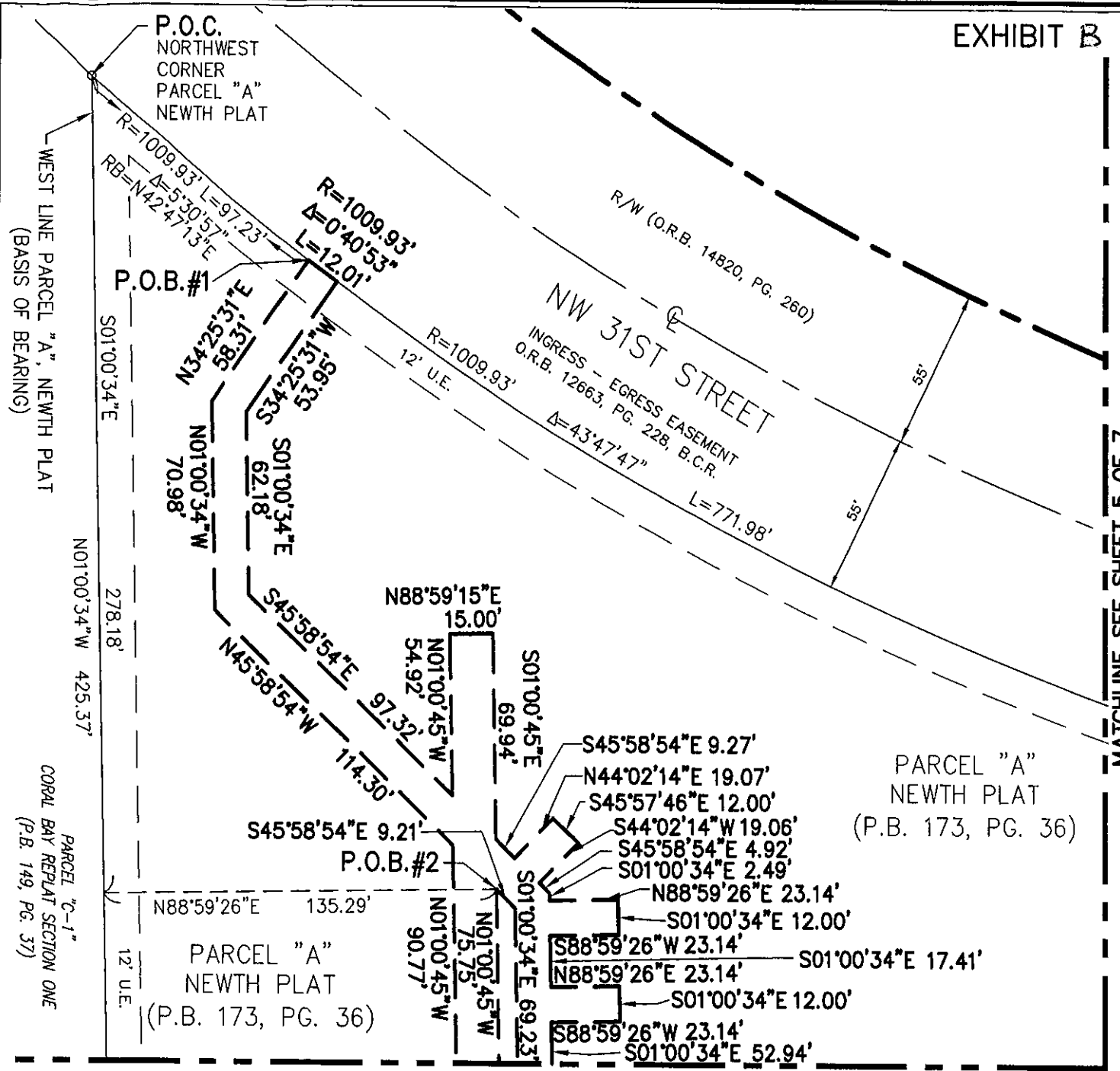


CAULFIELD & WHEELER, INC.
CIVIL ENGINEERING
LANDSCAPE ARCHITECTURE - SURVEYING
7900 GLADES ROAD - SUITE 100
BOCA RATON, FLORIDA 33434
PHONE (561)-392-1991 / FAX (561)-750-1452

[Signature]
DAVID P. LINDLEY
REGISTERED LAND
SURVEYOR - NO. 5005
STATE OF FLORIDA
LB# 3591

DATE	09/29/15
DRAWN BY	DLS
F.B. / PG.	N/A
SCALE	AS SHOWN
JOB NO.	6897-GUE

**PARCEL "A", WILTON TWENTY-FOURTH STREET RESIDENCES
GENERAL UTILITY EASEMENT
SKETCH OF DESCRIPTION**

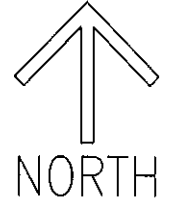
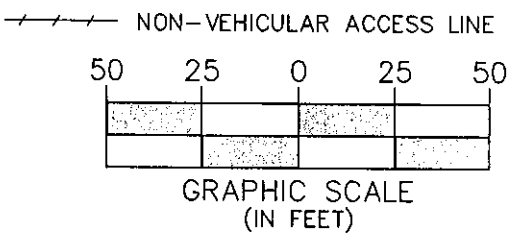


MATCHLINE SEE SHEET 5 OF 7


LEGEND/ABBREVIATIONS

- B.C.R. - BROWARD COUNTY RECORDS
- ⊙ - CENTERLINE
- Δ - DELTA ANGLE
- L - ARC LENGTH
- LB - LICENSED BUSINESS
- P.O.B. - POINT OF BEGINNING
- P.O.C. - POINT OF COMMENCEMENT
- R - RADIUS
- U.E. - UTILITY EASEMENT

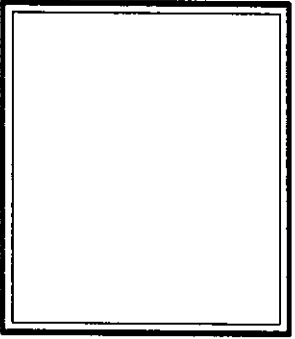
MATCHLINE SEE SHEET 4 OF 7



SHEET 3 OF 7



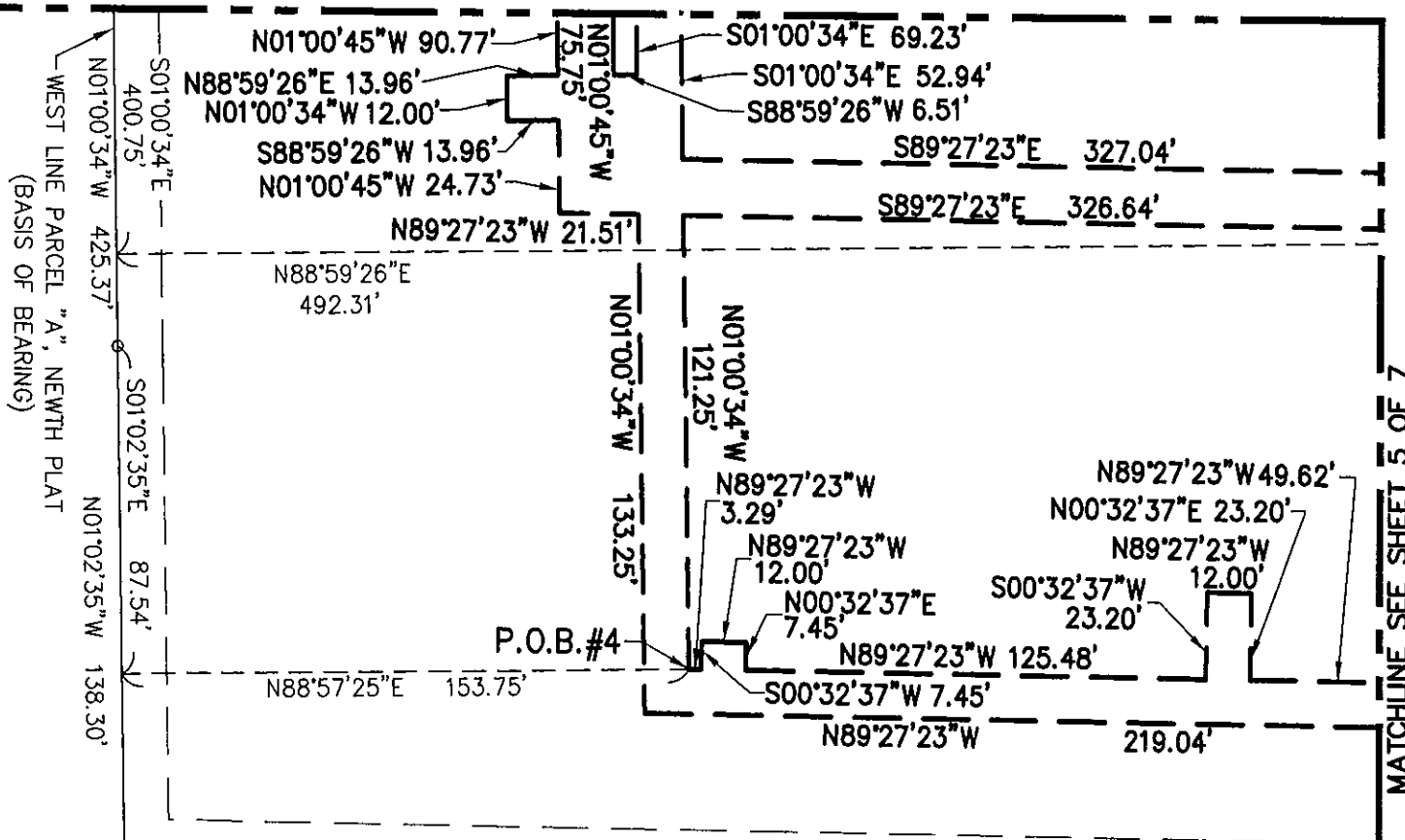
CAULFIELD & WHEELER, INC.
CIVIL ENGINEERING
LANDSCAPE ARCHITECTURE - SURVEYING
7900 GLADES ROAD - SUITE 100
BOCA RATON, FLORIDA 33434
PHONE (561)-392-1991 / FAX (561)-750-1452



DATE	09/29/15
DRAWN BY	DLS
F.B./ PG.	N/A
SCALE	AS SHOWN
JOB NO.	6897-GUE

**PARCEL "A", WILTON TWENTY-FOURTH STREET RESIDENCES
GENERAL UTILITY EASEMENT
SKETCH OF DESCRIPTION**

MATCHLINE SEE SHEET 3 OF 7



WEST LINE PARCEL "A", NEWTH PLAT
(BASIS OF BEARING)

MATCHLINE SEE SHEET 5 OF 7

34 35 36 37 38 39 40 41

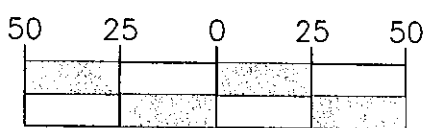
GREAT HORIZONS PARK
(P.B. 98, PG. 45)

SUBDIVISION RESURVEY:
"CORAL HARBOR"
(M.M.B. 8, PG. 32)

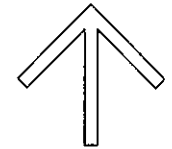
LEGEND/ABBREVIATIONS

- B.C.R. - BROWARD COUNTY RECORDS
- ⊙ - CENTERLINE
- Δ - DELTA ANGLE
- L - ARC LENGTH
- LB - LICENSED BUSINESS
- P.O.B. - POINT OF BEGINNING
- P.O.C. - POINT OF COMMENCEMENT
- R - RADIUS
- U.E. - UTILITY EASEMENT

--- NON-VEHICULAR ACCESS LINE




GRAPHIC SCALE
(IN FEET)

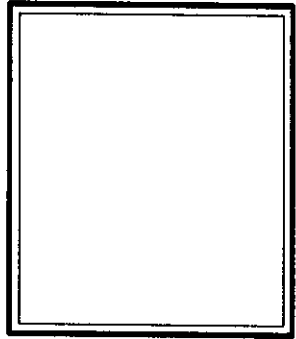


NORTH

SHEET 4 OF 7



CAULFIELD & WHEELER, INC.
CIVIL ENGINEERING
LANDSCAPE ARCHITECTURE - SURVEYING
7900 GLADES ROAD - SUITE 100
BOCA RATON, FLORIDA 33434
PHONE (561)-392-1991 / FAX (561)-750-1452



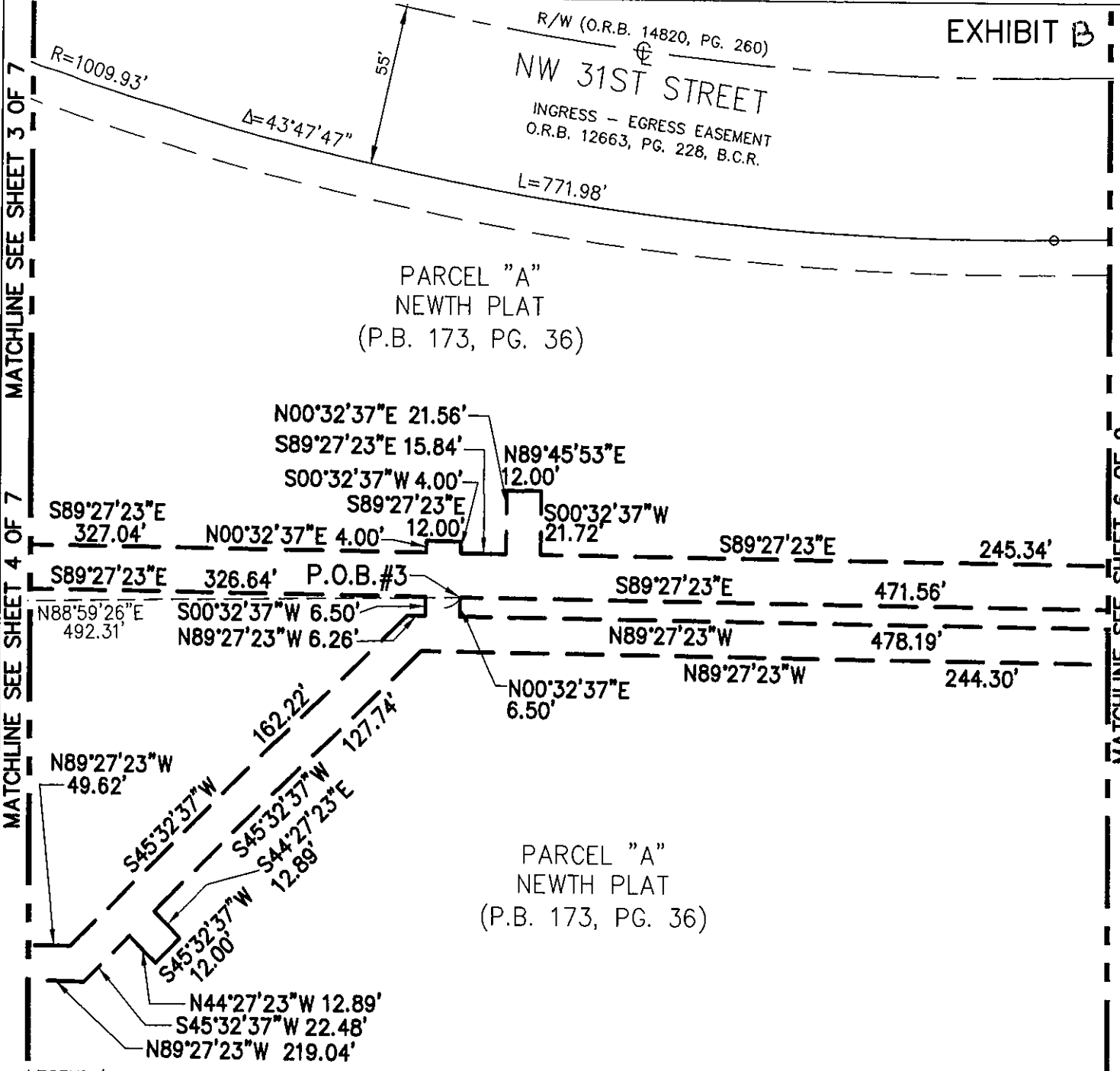
DATE	09/29/15
DRAWN BY	DLS
F.B./ PG.	N/A
SCALE	AS SHOWN
JOB NO.	6897-GUE

**PARCEL "A", WILTON TWENTY-FOURTH STREET RESIDENCES
GENERAL UTILITY EASEMENT
SKETCH OF DESCRIPTION**

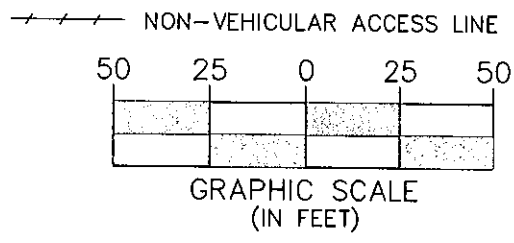
MATCHLINE SEE SHEET 3 OF 7

MATCHLINE SEE SHEET 4 OF 7

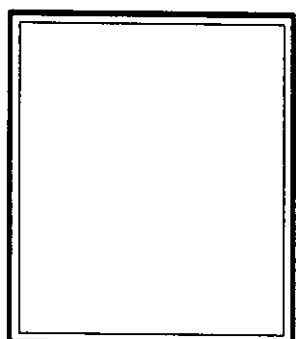
MATCHLINE SEE SHEET 6 OF 9



- LEGEND/ABBREVIATIONS**
- B.C.R. - BROWARD COUNTY RECORDS
 - ⊕ - CENTERLINE
 - Δ - DELTA ANGLE
 - L - ARC LENGTH
 - LB - LICENSED BUSINESS
 - P.O.B. - POINT OF BEGINNING
 - P.O.C. - POINT OF COMMENCEMENT
 - R - RADIUS
 - U.E. - UTILITY EASEMENT



CAULFIELD & WHEELER, INC.
 CIVIL ENGINEERING
 LANDSCAPE ARCHITECTURE - SURVEYING
 7900 GLADES ROAD - SUITE 100
 BOCA RATON, FLORIDA 33434
 PHONE (561)-392-1991 / FAX (561)-750-1452



DATE	09/29/15
DRAWN BY	DLS
F.B./ PG.	N/A
SCALE	AS SHOWN
JOB NO.	6897-GUE

**PARCEL "A", WILTON TWENTY-FOURTH STREET RESIDENCES
 GENERAL UTILITY EASEMENT
 SKETCH OF DESCRIPTION**

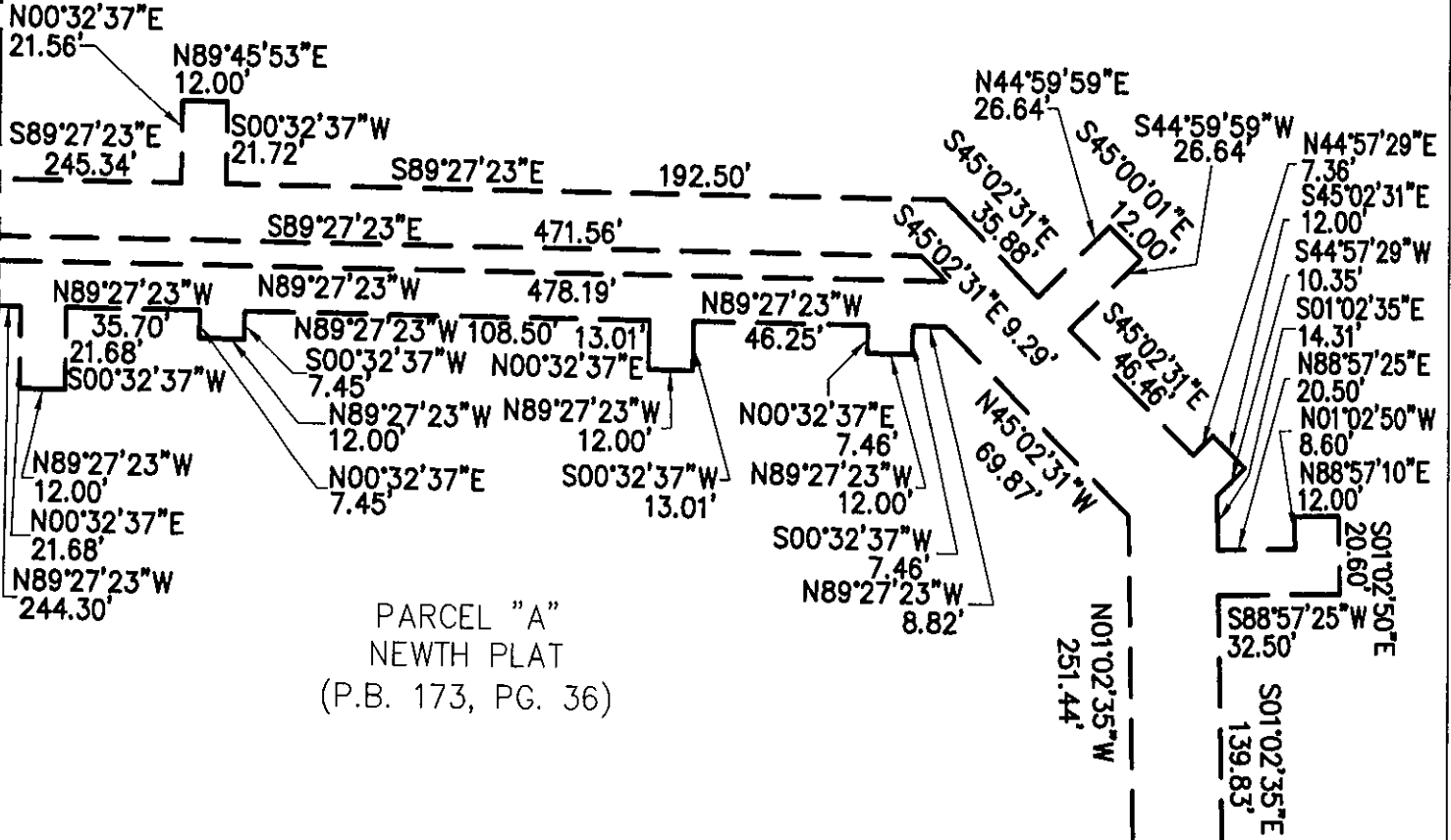
MATCHLINE SEE SHEET 5 OF 7

NW 31ST STREET

INGRESS - EGRESS EASEMENT
O.R.B. 12663, PG. 228, B.C.R.

N88°59'26"E 415.07'
12' U.E. 300'

PARCEL "A"
NEWTH PLAT
(P.B. 173, PG. 36)



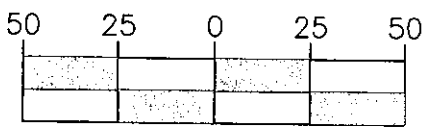
PARCEL "A"
NEWTH PLAT
(P.B. 173, PG. 36)

LEGEND/ABBREVIATIONS

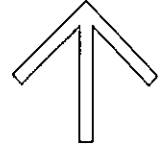
- B.C.R. - BROWARD COUNTY RECORDS
- ⊕ - CENTERLINE
- Δ - DELTA ANGLE
- L - ARC LENGTH
- LB - LICENSED BUSINESS
- P.O.B. - POINT OF BEGINNING
- P.O.C. - POINT OF COMMENCEMENT
- R - RADIUS
- U.E. - UTILITY EASEMENT

MATCHLINE SEE SHEET 7 OF 7

NON-VEHICULAR ACCESS LINE



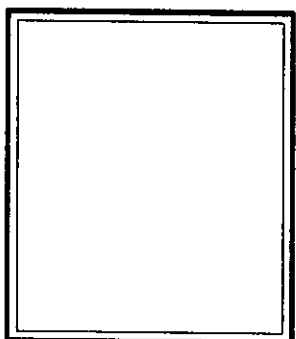
GRAPHIC SCALE
(IN FEET)



NORTH

SHEET 6 OF 7

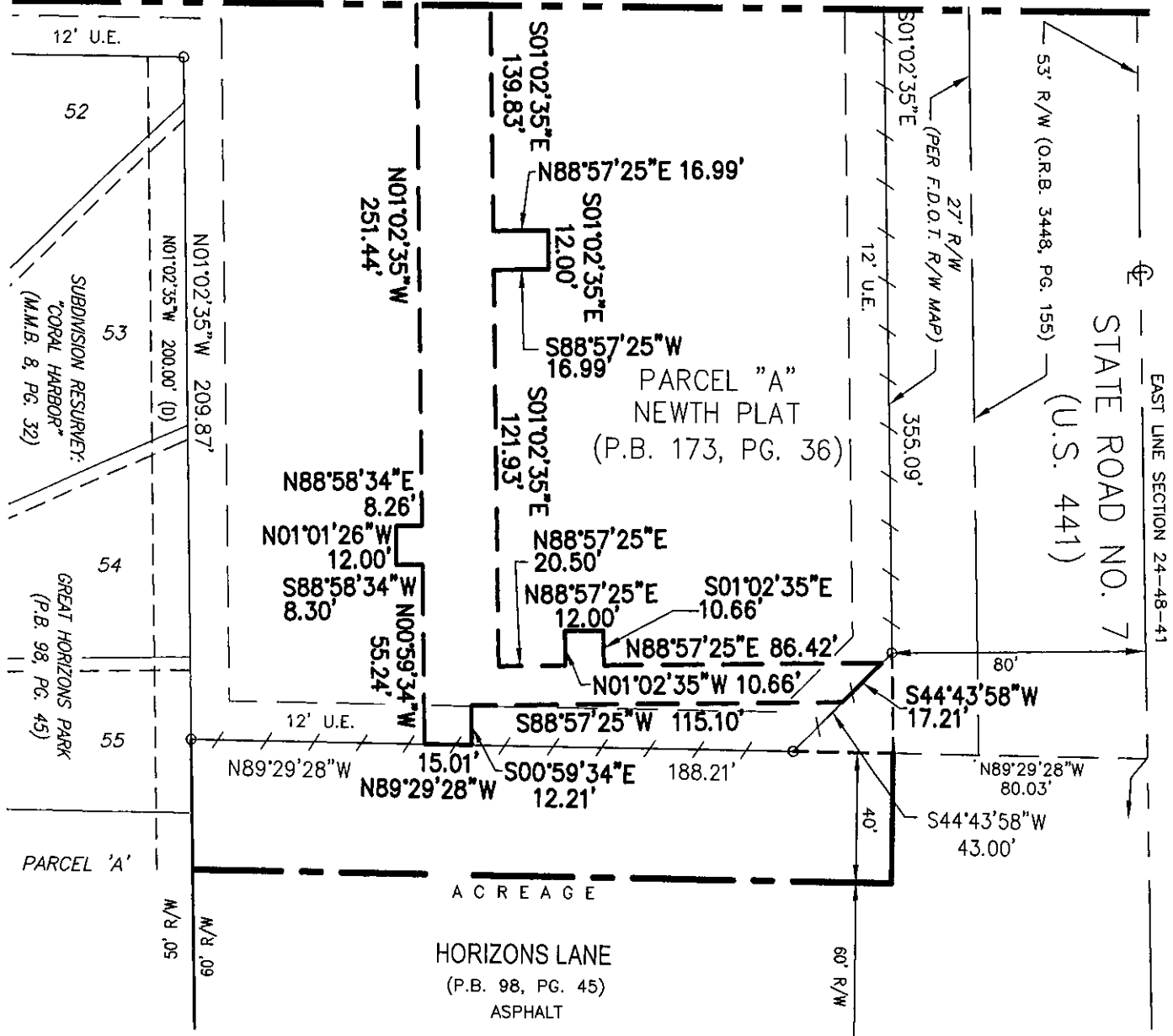
CAULFIELD & WHEELER, INC.
 CIVIL ENGINEERING
 LANDSCAPE ARCHITECTURE - SURVEYING
 7900 GLADES ROAD - SUITE 100
 BOCA RATON, FLORIDA 33434
 PHONE (561)-392-1991 / FAX (561)-750-1452



DATE	09/29/15
DRAWN BY	DLS
F.B./ PG.	N/A
SCALE	AS SHOWN
JOB NO.	6897-GUE

PARCEL "A", WILTON TWENTY-FOURTH STREET RESIDENCES
GENERAL UTILITY EASEMENT
SKETCH OF DESCRIPTION

MATCHLINE SEE SHEET 6 OF 7



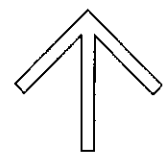
LEGEND/ABBREVIATIONS

- B.C.R. - BROWARD COUNTY RECORDS
- ⊕ - CENTERLINE
- Δ - DELTA ANGLE
- L - ARC LENGTH
- LB - LICENSED BUSINESS
- P.O.B. - POINT OF BEGINNING
- P.O.C. - POINT OF COMMENCEMENT
- R - RADIUS
- U.E. - UTILITY EASEMENT

NON-VEHICULAR ACCESS LINE

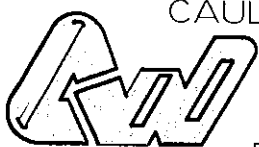


GRAPHIC SCALE
(IN FEET)



NORTH

SHEET 7 OF 7



CAULFIELD & WHEELER, INC.

CIVIL ENGINEERING
LANDSCAPE ARCHITECTURE - SURVEYING
7900 GLADES ROAD - SUITE 100
BOCA RATON, FLORIDA 33434
PHONE (561)-392-1991 / FAX (561)-750-1452

PARCEL "A", WILTON TWENTY-FOURTH STREET RESIDENCES
GENERAL UTILITY EASEMENT
SKETCH OF DESCRIPTION

DATE 09/29/15

DRAWN BY DLS

F.B./ PG. N/A

SCALE AS SHOWN

JOB NO. 6897-GUE