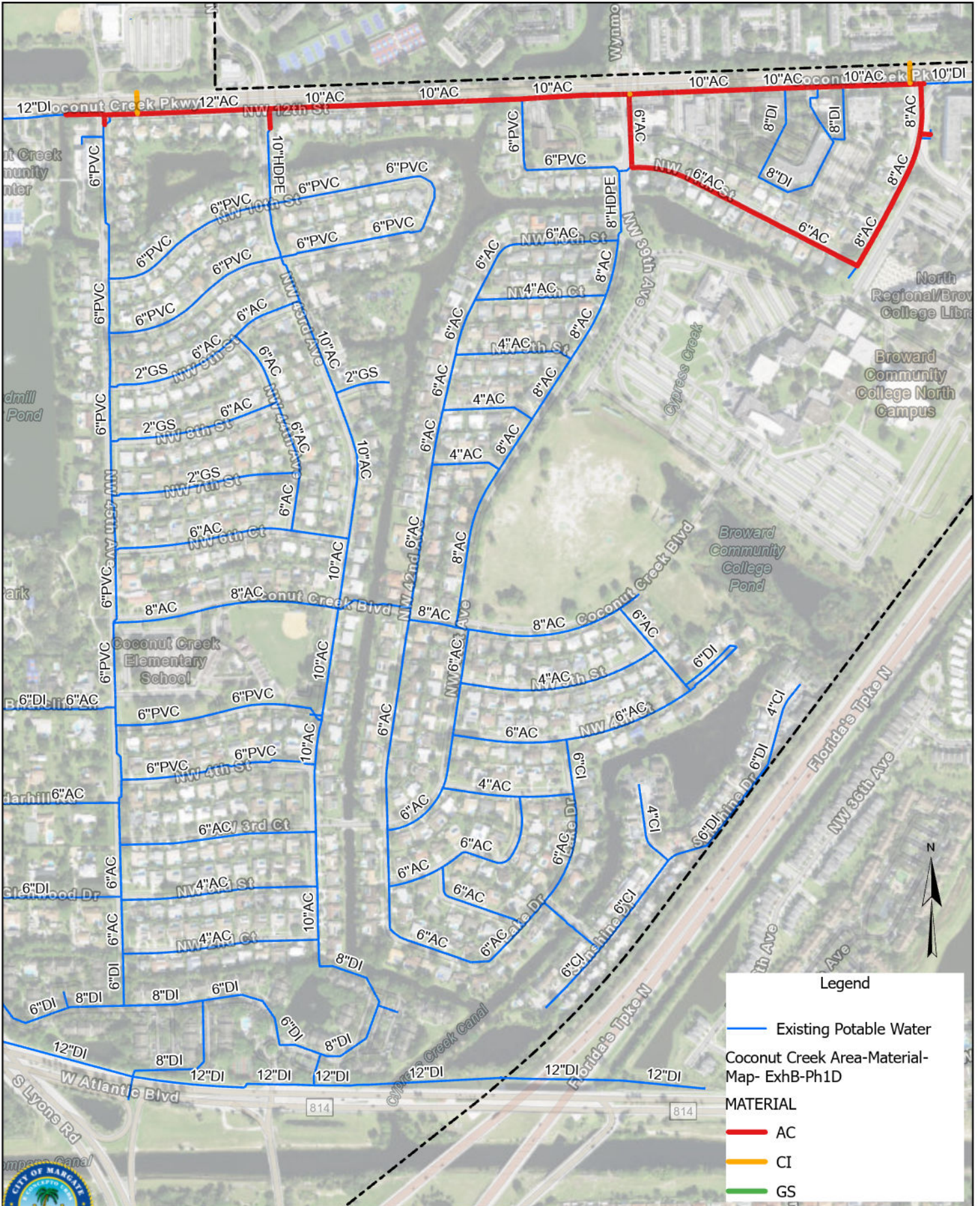


PHASE 1D



Legend

- Existing Potable Water
- AC
- CI
- GS

Coconut Creek Area-Material-Map- ExhB-Ph1D

MATERIAL

Path: F:\DATA\Department\DEES\Engineering\CIP\PT-285 - 2018 Water Main Imp Phase 1\1. Design\9.GIS_Phase1\GIS_Phase1.aprx



**EXHIBIT B
PROPOSED UTILITY WORK**

1 inch equals 600 feet

Pipe Length (ft) by Material and Size				Pipe Length (ft) by Material and Size				All Giannetti/CAS Phase 1C and Phase 1D				
Phase 1C	AC	CI	Grand Total	Phase 1D	AC	CI	Grand Total	Pipe Length (ft) by Material and Size				
Diameter (in)	AC	CI	Grand Total									
4	3,502.25	685.31	4,187.56	6	1,634.75	102.77	1,737.52	4	3,502.25	685.31	4,187.56	16%
6	9,973.67	2,014.56	11,988.23	8	944.21	1.00	945.21	6	11,608.41	2,117.33	13,725.75	51%
8	3,522.29	121.53	3,643.82	10	3,229.99		3,229.99	8	4,466.50	122.53	4,589.03	17%
Grand Total	16,998.21	2,821.39	19,819.60	12	984.65		984.65	10	3,229.99		3,229.99	12%
				16		96.78	96.78	12	984.65		984.65	4%
				Grand Total	6,793.60	200.55	6,994.15	16		96.78	96.78	0%
								Grand Total	23,791.81	3,021.95	26,813.75	
									89%	11%		

Length (ft)					Length (ft)					All Giannetti/CAS Phase 1C and Phase 1D					
Phase 1C	AC	CI	Grand Total	Estimated Cost	Phase 1D	AC	CI	Grand Total	Estimated Cost	Pipe Length (ft) by Material and Size					
Diameter (in)	AC	CI	Grand Total	Estimated Cost	LF	% Pipe Length	Estimated Cost								
4	3,502.25	685.31	4,187.56	\$ 753,760.71	6	1,634.75	102.77	1,737.52	\$ 469,130.82	4	3,502.25	685.31	4,187.56	16%	\$ 753,760.71
6	9,973.67	2,014.56	11,988.23	\$ 3,236,820.88	8	944.21	1.00	945.21	\$ 340,276.48	6	11,608.41	2,117.33	13,725.75	51%	\$ 3,705,951.70
8	3,522.29	121.53	3,643.82	\$ 1,311,773.62	10	3,229.99		3,229.99	\$ 1,453,495.55	8	4,466.50	122.53	4,589.03	17%	\$ 1,652,050.09
Grand Total	16,998.21	2,821.39	19,819.60	\$ 5,302,355.21	12	984.65		984.65	\$ 531,710.26	10	3,229.99		3,229.99	12%	\$ 1,453,495.55
					16		96.78	96.78	\$ 69,682.17	12	984.65		984.65	4%	\$ 531,710.26
					Grand Total	6,793.60	200.55	6,994.15	\$ 2,864,295.27	16		96.78	96.78	0%	\$ 69,682.17
										Grand Total	23,791.81	3,021.95	26,813.75		\$ 8,166,650.48