

PRELIMINARY ENGINEERING PLAN
FOR

LEGAL DESCRIPTION

PARCEL 3, "ORIOLE GOLF AND TENNIS CLUB SECTION TWO", ACCORDING TO THE PLAT THEREOF AS RECORDED IN PLAT BOOK 78, PAGE 21, OF THE PUBLIC RECORDS OF BROWARD COUNTY, FLORIDA.

TOGETHER WITH:

A PORTION OF PARCEL 4 OF SAID PLAT, "ORIOLE GOLF AND TENNIS CLUB SECTION TWO", ACCORDING TO THE PLAT THEREOF, AS RECORDED IN PLAT BOOK 78, PAGE 21, OF THE PUBLIC RECORDS OF BROWARD COUNTY, FLORIDA, MORE PARTICULARLY DESCRIBED AS FOLLOWS:

COMMENCING AT THE NORTHWEST CORNER OF SECTION 35, TOWNSHIP 48 SOUTH, RANGE 41 EAST; THENCE SOUTH 00° 03' 23" WEST, 292.60 FEET ALONG THE WEST BOUNDARY OF SAID SECTION TO THE POINT OF INTERSECTION WITH THE SOUTH RIGHT-OF-WAY LINE OF MARGATE BLVD. ACCORDING TO SAID PLAT; THENCE ALONG SAID SOUTH RIGHT-OF-WAY LINE OF MARGATE BLVD. THE FOLLOWING FOUR (4) COURSES: SOUTH 89° 56' 37" EAST, 15.94 FEET; THENCE ALONG THE ARC OF A TANGENT CURVE, BEING CONCAVE TO THE SOUTHWEST, HAVING A RADIUS OF 664.05 FEET, A DELTA OF 39° 51' 40", AN ARC DISTANCE OF 461.98 FEET; THENCE TANGENT TO SAID CURVE SOUTH 50° 04' 57" EAST, 725.16 FEET; THENCE ALONG THE ARC OF A TANGENT CURVE, CONCAVE TO THE NORTHEAST, HAVING A RADIUS OF 776.33 FEET, A DELTA OF 22° 15' 10", AN ARC DISTANCE OF 301.52 FEET TO THE NORTHEAST CORNER OF SAID PARCEL 3 AND THE POINT OF BEGINNING; THENCE CONTINUE ALONG SAID CURVE, HAVING A RADIUS OF 776.33 FEET, A DELTA OF 11° 58' 05", AN ARC DISTANCE OF 162.16 FEET (THE PRECEDING COURSE BEING COINCIDENT WITH THE SAID SOUTH RIGHT-OF-WAY LINE OF MARGATE BLVD.); THENCE SOUTH 20° 36' 41" WEST, 134.67 FEET; THENCE NORTH 88° 35' 00" WEST, 115.00 FEET TO A POINT OF THE EAST LINE OF SAID PARCEL 3, THENCE NORTH 01° 25' 00" EAST ALONG THE EAST LINE OF SAID PARCEL 3, A DISTANCE OF 156.02 FEET TO THE POINT OF BEGINNING.

SAID LANDS SITUATE IN THE CITY OF MARGATE, BROWARD COUNTY, FLORIDA AND CONSISTS OF 21.302 ACRES MORE OR LESS.

DEVELOPMENT TEAM

DEVELOPER: Fimiani Development Corporation
5301 North Federal Highway, Suite 350
Boca Raton, Florida 33487
Phone: 561-395-8882

LAND USE ATTORNEY/ LAND PLANNER: Dunay, Miskel and Backman, LLP
14 SE 4th Street, Suite 36
Boca Raton, Florida 33432
Phone: 561-405-3300

ENGINEER/ PLANNER: Schnars Engineering Corporation
947 Clint Moore Road
Boca Raton, Florida 33487
Phone: 561-241-6455

ARCHITECT: A B Design Group
1441 N. Ronald Reagan Boulevard
Longwood, Florida 32750
Phone: 407-774-6078

LANDSCAPE ARCHITECT: Peterson Design Professionals
151 Southwest 7th Terrace
Boca Raton, Florida 33486
Phone: 561-702-0136

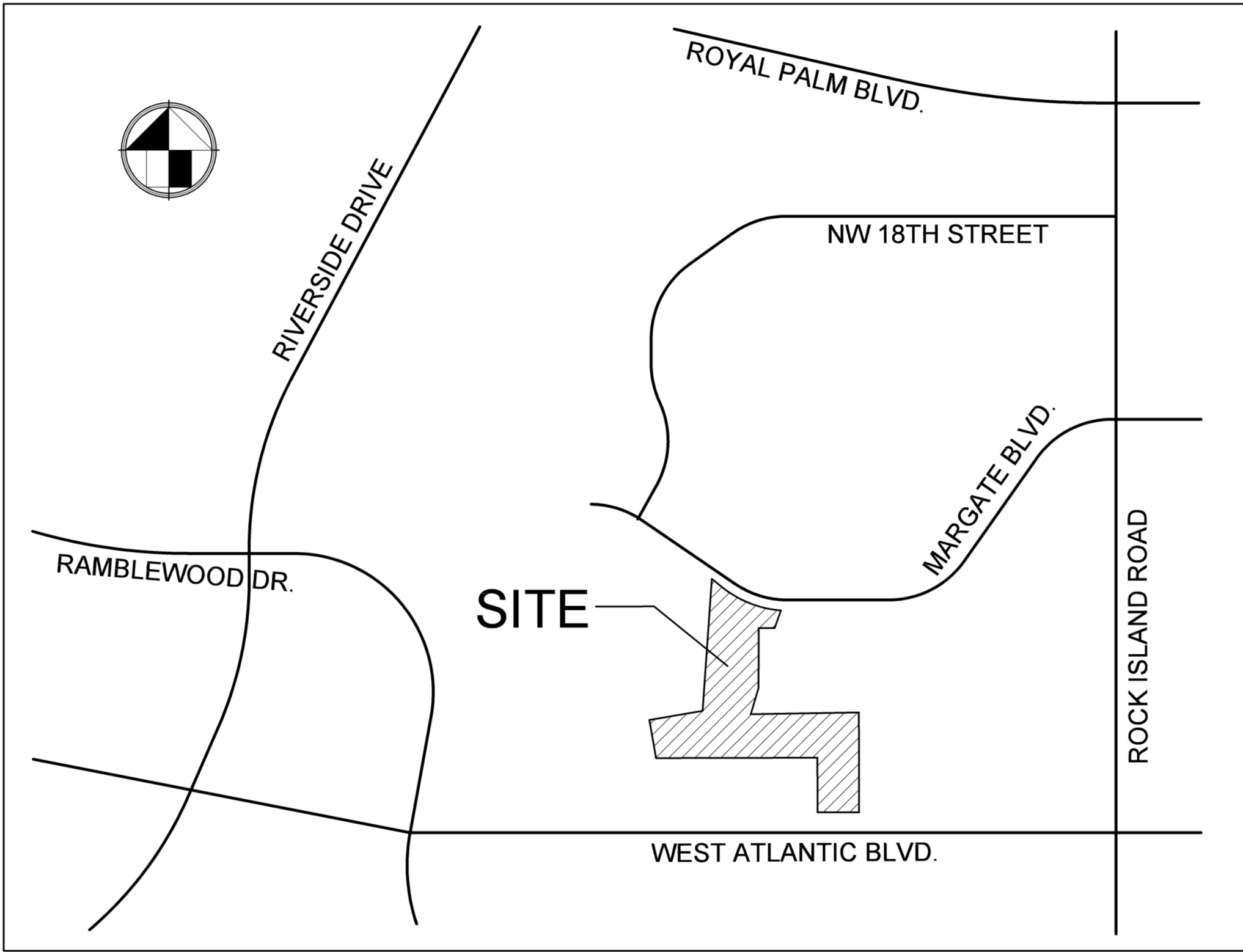
PHOTOMETRIC ENGINEER: Lightworks, Inc.
7447 NW 48th Street, Suite B
Miami, Florida 33166
Phone: 561-641-5570

OWNER:

Margate Executive Golf Course, LLC
5301 North Federal Highway, Suite 350
Boca Raton, Florida 33487

Nove of Margate

Margate, Florida



LOCATION MAP
S 35, T 48S, R 41E
NOT TO SCALE

INDEX OF SHEETS

SHEET DESCRIPTION	SHEET NO.
MASTER PRELIMINARY ENGINEERING PLAN	C1
PRELIMINARY ENGINEERING PLAN	C2 - C4
PAVEMENT MARKING & SIGNAGE PLAN	C5 - C7
CONSTRUCTION DETAILS	C8 - C10
CANAL EXHIBIT	C11

Jeffrey T. Schnars, Professional Engineer, State of Florida, License No. 46697.
This item has been digitally signed and sealed by Jeffrey T. Schnars, P.E. on 10/11/2023.
Printed copies of this document are not considered signed and sealed and the signature must be verified on any electronic copies.

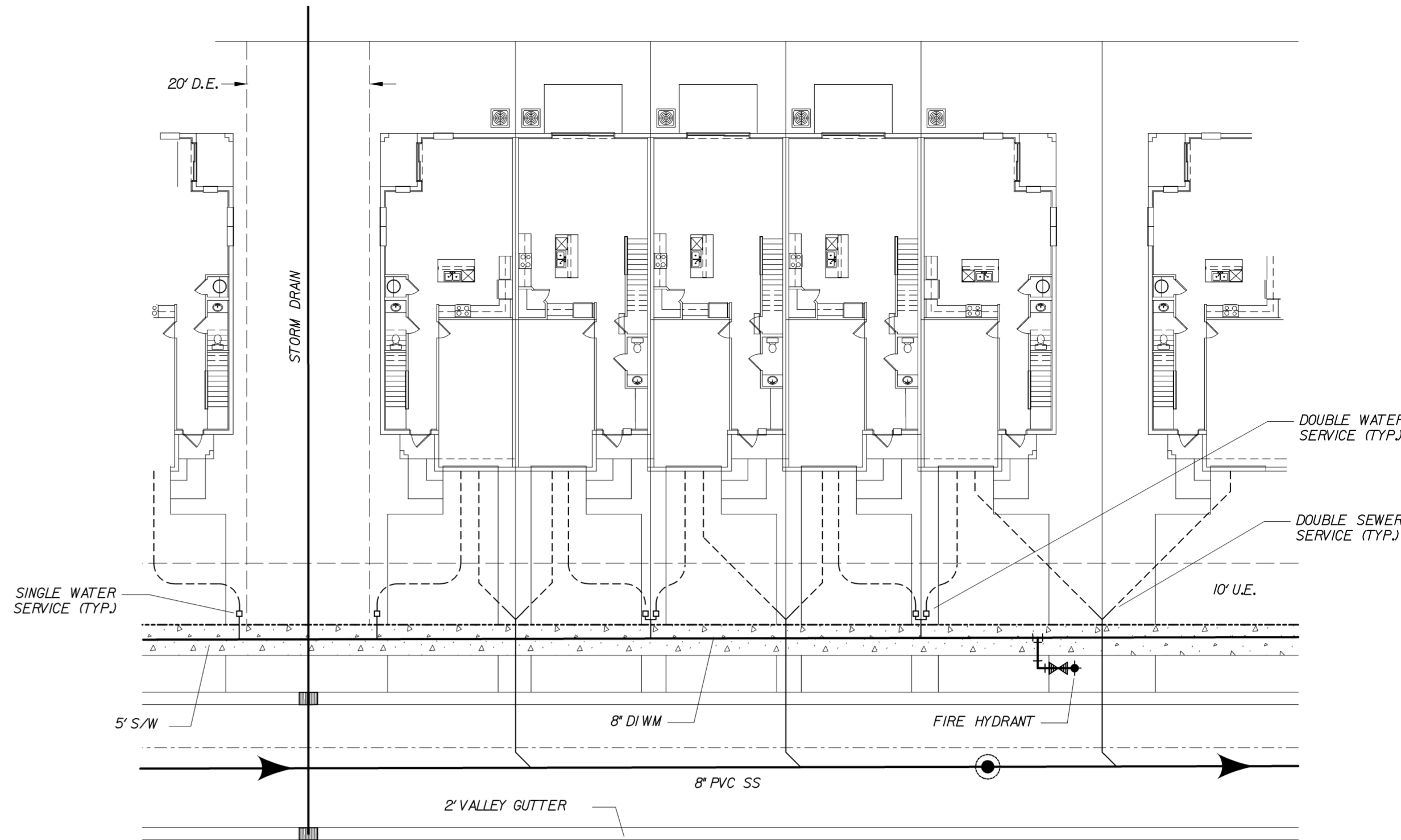
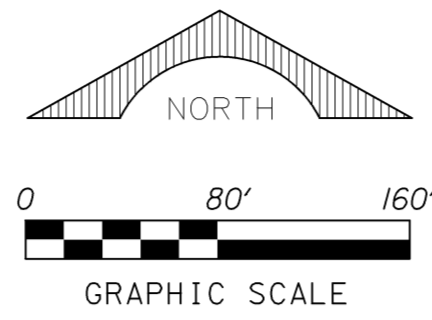
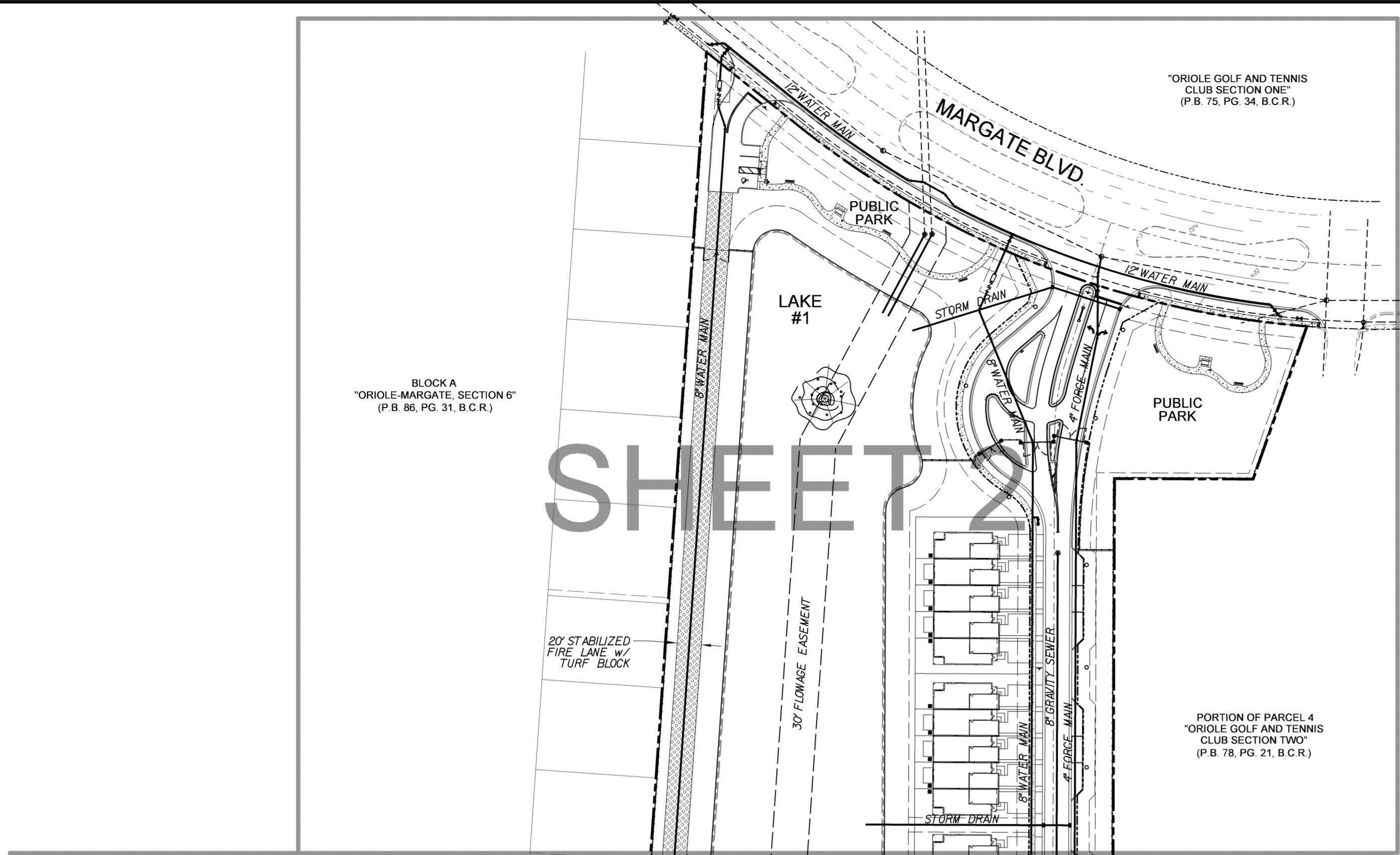
SCHNARS
ENGINEERING CORPORATION

947 CLINT MOORE ROAD • BOCA RATON, FLORIDA 33487

TEL: (561) 241-6455 • FAX: (561) 241-5182

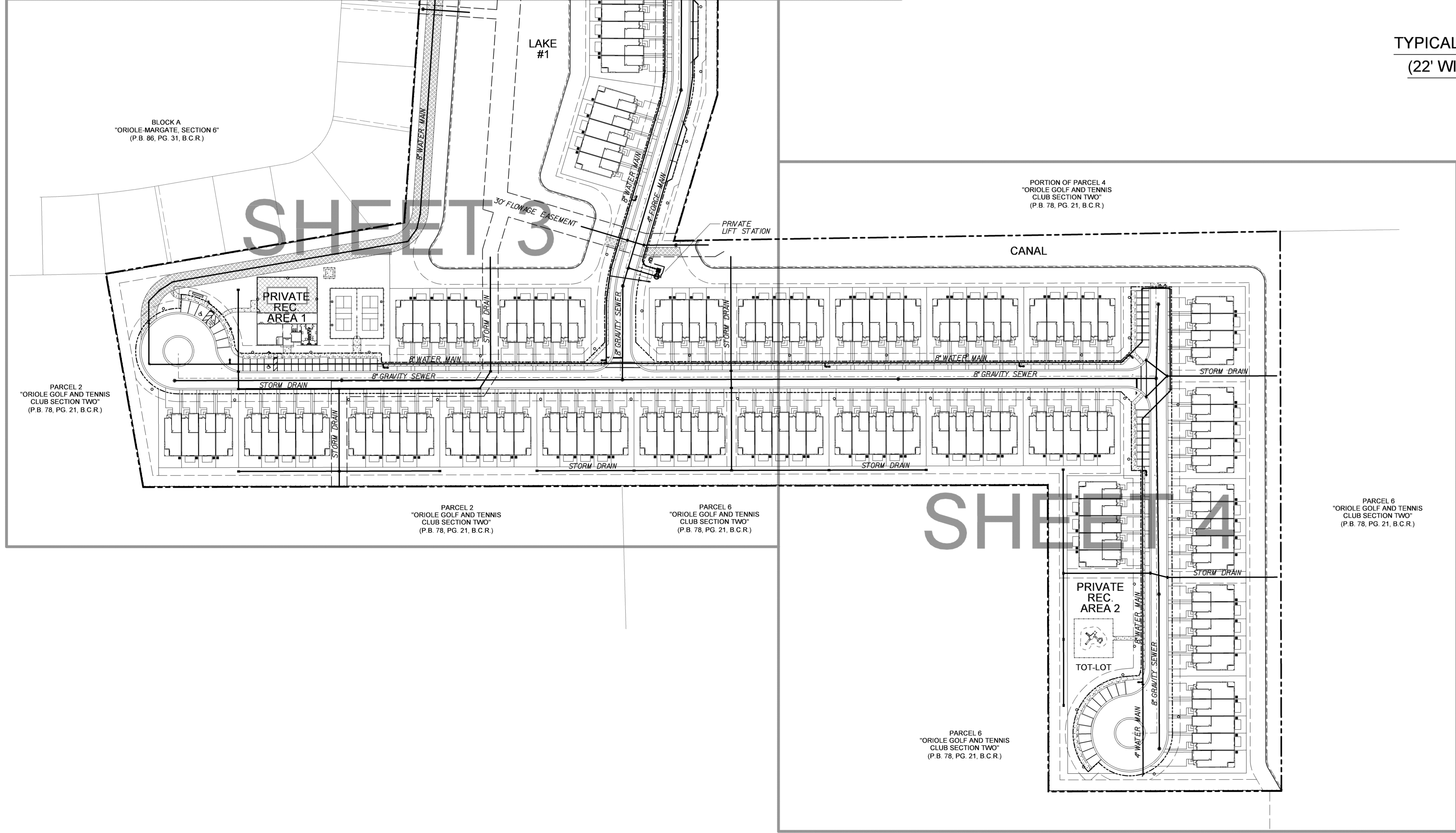
CERTIFICATE OF AUTHORIZATION No. 6640

Jeffrey T. Schnars, P.E.
Civil Engineer
Florida Registration No. 46697
(FOR THE FIRM)



TYPICAL WATER & SEWER DETAIL
(22' WIDE TOWNHOUSE UNITS)

N.T.S.



Jeffrey T. Schnars, Professional Engineer, State of Florida, License No. 46697.
This item has been digitally signed and sealed by Jeffrey T. Schnars, P.E. on 10/11/2023.
Printed copies of this document are not considered signed and sealed and the signature must be verified on any electronic copies.

NOTES:

- FEMA FIRM FLOOD ZONES:
COMMUNITY PANEL NO. 12011 C 0355 H DATED 8/18/2014
FLOOD ZONES: AE (EL. 11.0 FT. NAVD), AND X
- BROWARD COUNTY 100 YEAR FLOOD ELEVATION MAP: 12.50 FT NAVD
BROWARD COUNTY 10 YEAR FLOOD ELEVATION MAP: 10.50 FT NAVD
- PROPOSED ELEVATIONS:
MINIMUM FINISHED FLOOR = 12.50 FT NAVD
MINIMUM ROAD = 10.50 FT NAVD
DESIGN WATER LEVEL: 5.00 FT NAVD
- A DRAINAGE & FLOWAGE EASEMENT SHALL BE PROVIDED TO THE CITY OF MARGATE THROUGH THE LAKE SYSTEM.
- DURING CONSTRUCTION, THE CONTRACTOR SHALL MAINTAIN EXISTING DRAINAGE FLOW FROM MARGATE BLVD. AND ADJACENT COMMUNITIES THROUGH THE PROJECT.
- ALL HANDICAP RAMPS AND DETECTABLE WARNINGS SHALL BE INSTALLED PER FDOT INDEX 522-002.
- CURB INLET GRATE ELEVATIONS REPRESENT THE EDGE OF PAVEMENT ELEVATION.
- ALL ELEVATIONS SHOWN HEREON ARE BASED ON THE NORTH AMERICAN VERTICAL DATUM OF 1988 (NAVD 1988).
- THE CITY WILL BE GRANTED AN EASEMENT OVER THE LAKE, CANAL, LAKE MAINTENANCE EASEMENTS (LME), PUBLIC DRAINAGE EASEMENTS (PDE), AND ROADWAY TRACTS.
- ALL ONSITE DRAINAGE, WATER, & SEWER WILL BE OWNED & MAINTAINED BY THE HOMEOWNERS ASSOCIATION.

ORIGINAL:	OCT. 2022
REVISIONS:	
1	1/3/23 CITY COMMENTS
2	8/10/23 CITY COMMENTS
3	10/11/23 CITY COMMENTS
4	
5	

TASK:	MASTER PRELIMINARY ENGINEERING PLAN
PROJECT:	NOVE OF MARGATE MARGATE FLORIDA

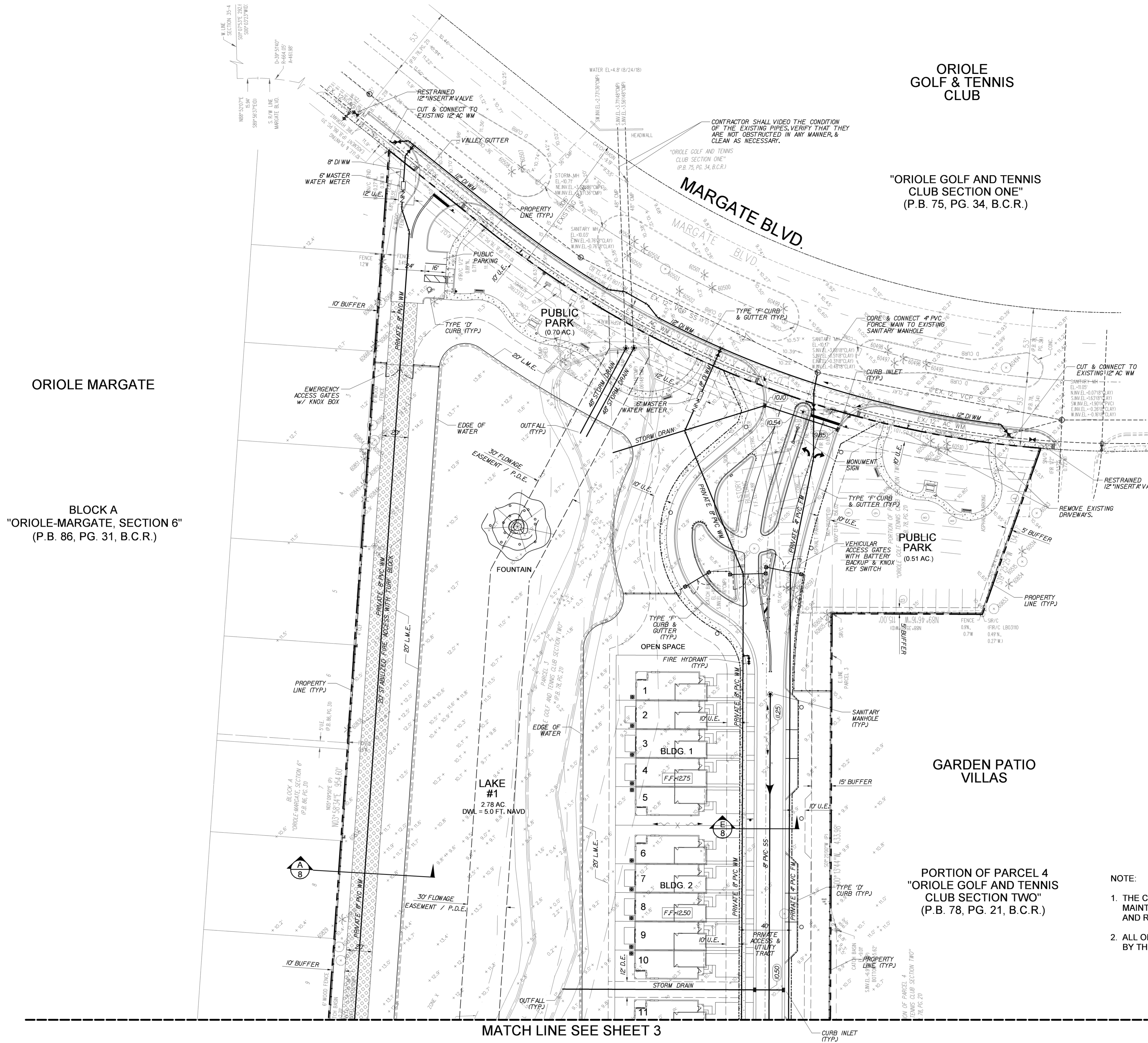
SCALE	
JOB NO.	17180
DRAWN	RAD
DESIGNED	JTS
CHECKED	JWM
Q.C.	JTS
SHEET	C1 OF 11

Jeffrey T. Schnars, P.E.
Civil Engineer
Florida Registration No. 46697
(FOR THE FIRM)

8/11/23

5/20/23

10/11/2023



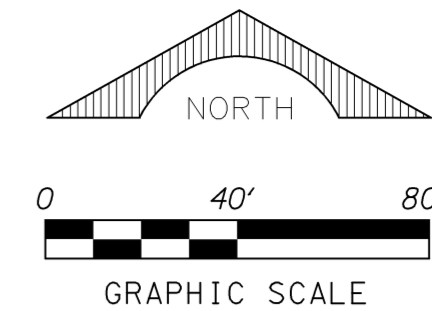
LEGEND	
D.E.	PRIVATE DRAINAGE EASEMENT
P.D.E.	PUBLIC DRAINAGE EASEMENT
R.E.	RIM ELEVATION
G.E.	GRATE ELEVATION
I.E.	INVERT ELEVATION
U.E.	UTILITY EASEMENT
•	SANITARY SEWER MANHOLE
—	SEWER LATERAL
—	STORM CATCH BASIN
—	FIRE HYDRANT, GATE VALVE & TEE ASSEMBLY
—	PROPOSED GATE VALVE
—	DIRECTION OF OVERLAND FLOW
X	HIGH POINT
FF+10.00	FINISHED FLOOR ELEVATION
—	EXISTING UTILITIES
—	EXISTING ELEVATION
---	PROPERTY LINE
---	EXISTING INFORMATION
---	PROPOSED INFORMATION
—	NEW CONCRETE SIDEWALK
—	EXISTING CONCRETE
—	PROPOSED OFFSITE ASPHALT
—	PROPOSED CONCRETE PAVERS
○	PROPOSED LIGHT POLE

Jeffrey T. Schnars, Professional Engineer, State of Florida, License No. 46697.
This item has been digitally signed and sealed by Jeffrey T. Schnars, P.E. on 10/11/2023.
Printed copies of this document are not considered signed and sealed and the signature must be verified on any electronic copies.

ORIGINAL:	OCT. 2022
REVISIONS:	
1	1/3/23 CITY COMMENTS
2	3/27/23 CITY COMMENTS
3	8/10/23 CITY COMMENTS
4	10/11/23 CITY COMMENTS
5	

PROJECT:	TASK:
NOVE OF MARGATE	PRELIMINARY ENGINEERING PLAN
MARGATE	FLORIDA

JOB NO. 17180	
DRAWN RAD	
DESIGNED JTS	
CHECKED JWM	
Q.C. JTS	
SHEET C2 OF 11	



NOTE:

1. THE CITY WILL BE GRANTED AN EASEMENT OVER THE LAKE, CANAL, LAKE MAINTENANCE EASEMENTS (LME), PUBLIC DRAINAGE EASEMENTS (PDE), AND ROADWAY TRACTS.
2. ALL ONSITE DRAINAGE, WATER, & SEWER WILL BE OWNED & MAINTAINED BY THE HOMEOWNERS ASSOCIATION.

BLOCK A
"ORIOLE-MARGATE, SECTION 6"
(P.B. 86, PG. 31, B.C.R.)

ORIOLE MARGATE

PARCEL 2
"ORIOLE GOLF AND TENNIS
CLUB SECTION TWO"
(P.B. 78, PG. 21, B.C.R.)

ORIOLE GARDENS
CONDOMINIUM PH 2

PARCEL 2
"ORIOLE GOLF AND TENNIS
CLUB SECTION TWO"
(P.B. 78, PG. 21, B.C.R.)

PARCEL 6
"ORIOLE GOLF AND TENNIS
CLUB SECTION TWO"
(P.B. 78, PG. 21, B.C.R.)

GARDEN PATIO
VILLAS

PORTION OF PARCEL 4
"ORIOLE GOLF AND TENNIS
CLUB SECTION TWO"
(P.B. 78, PG. 21, B.C.R.)

LEGEND	
D.E.	PRIVATE DRAINAGE EASEMENT
P.D.E.	PUBLIC DRAINAGE EASEMENT
R.E.	RIM ELEVATION
G.E.	GRATE ELEVATION
I.E.	INVERT ELEVATION
U.E.	UTILITY EASEMENT
	SANITARY SEWER MANHOLE
	SEWER LATERAL
	STORM CATCH BASIN
	FIRE HYDRANT, GATE VALVE & TEE ASSEMBLY
	PROPOSED GATE VALVE
	DIRECTION OF OVERLAND FLOW
	HIGH POINT
FF+10.00	FINISHED FLOOR ELEVATION
	EXISTING UTILITIES
	EXISTING ELEVATION
	PROPERTY LINE
	EXISTING INFORMATION
	PROPOSED INFORMATION
	NEW CONCRETE SIDEWALK
	EXISTING CONCRETE
	PROPOSED OFFSITE ASPHALT
	PROPOSED CONCRETE PAVERS
	PROPOSED LIGHT POLE

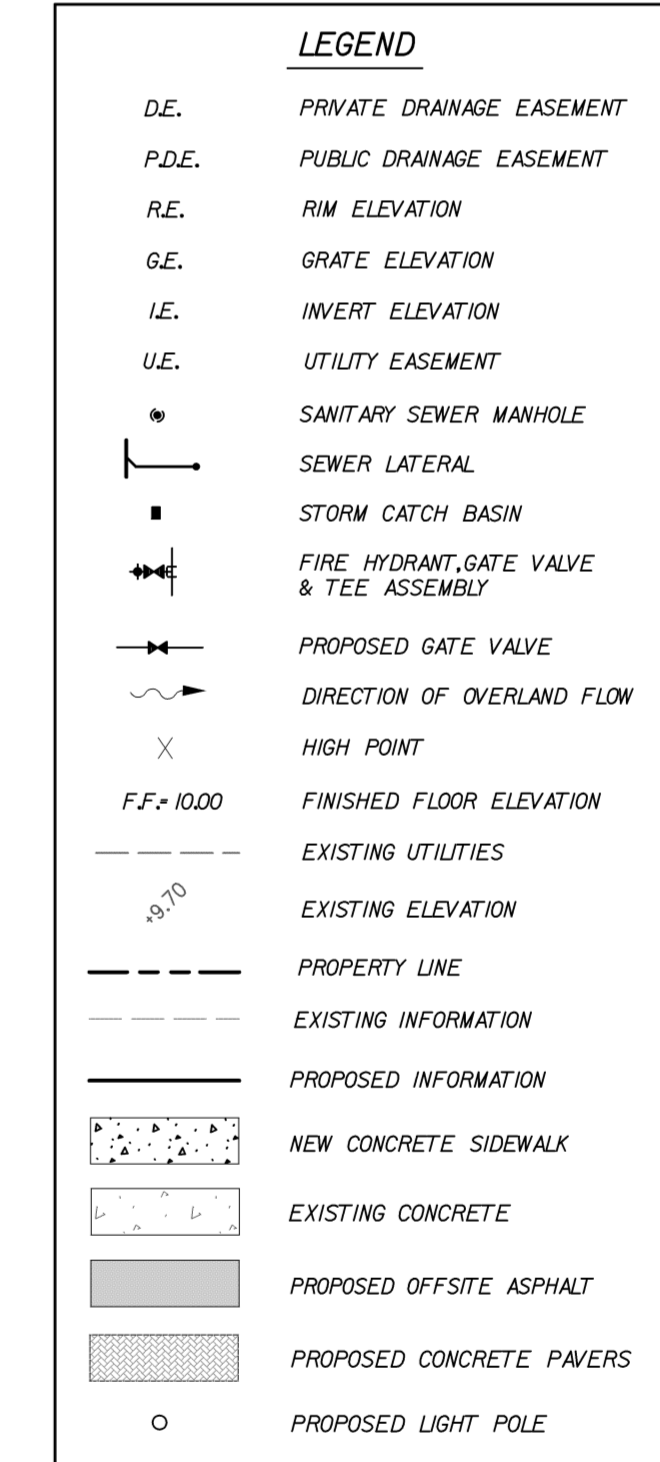
Jeffrey T. Schnars, Professional Engineer, State of Florida, License No. 46697.
This item has been digitally signed and sealed by Jeffrey T. Schnars, P.E. on 10/11/2023.
Printed copies of this document are not considered signed and sealed and the signature must be verified on any electronic copies.

SCHNARS
ENGINEERING CORPORATION
947 CLINT MOORE ROAD
BOCA RATON, FLORIDA 33487
TEL: (561) 241-1465
FAX: (561) 241-1512
CERTIFICATE OF AUTHORIZATION No. 6640

ORIGINAL:	OCT. 2022
REVISIONS:	
1	1/3/23 CITY COMMENTS
2	3/27/23 CITY COMMENTS
3	8/4/23 CITY COMMENTS
4	10/11/23 CITY COMMENTS
5	

TASK:	PRELIMINARY ENGINEERING PLAN
PROJECT:	NOVE OF MARGATE
	FLORIDA
	MARGATE

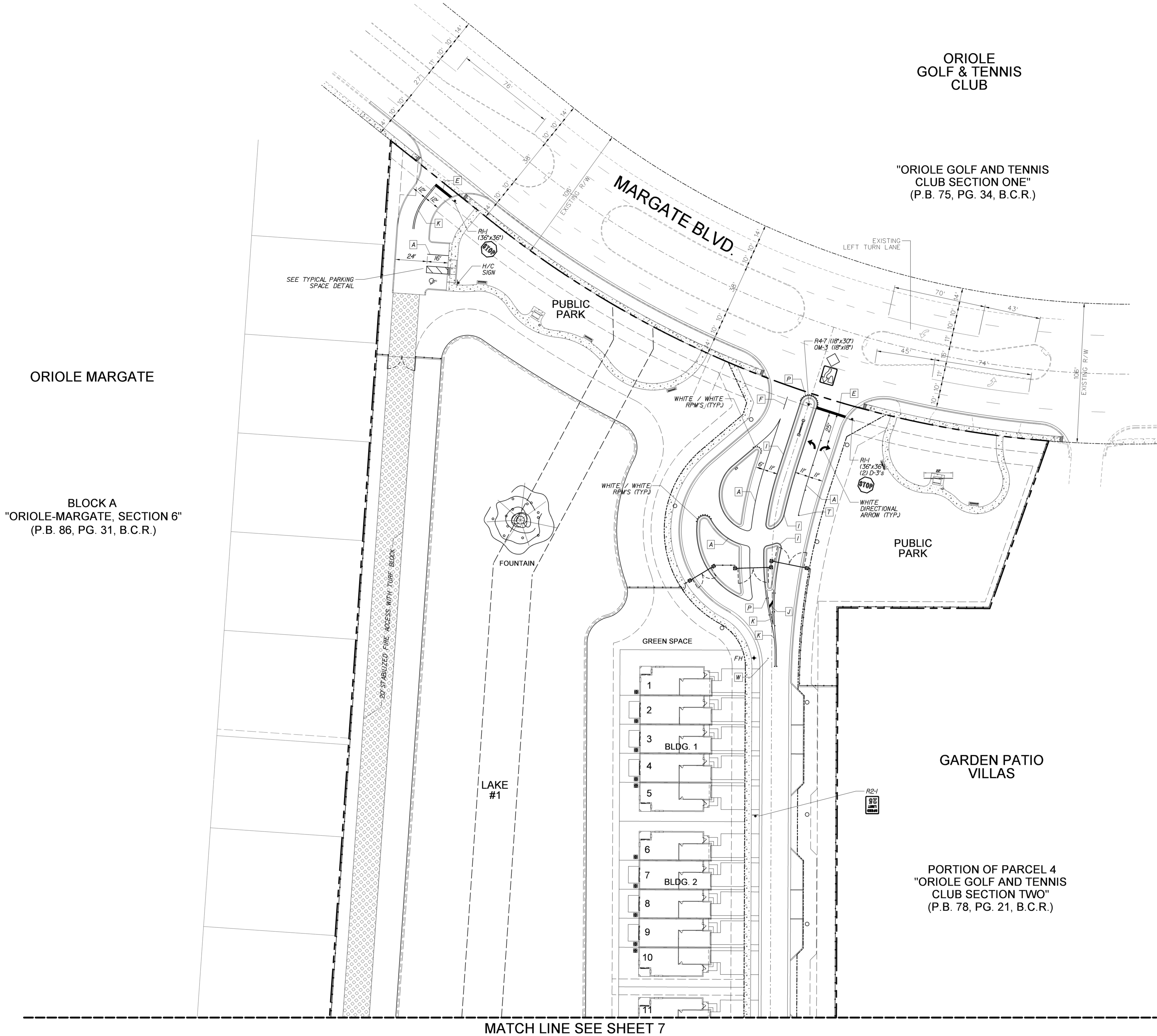
JOB NO.	17180
DRAWN	RAD
DESIGNED	JTS
CHECKED	JWM
Q.C.	JTS
SHEET	C3 OF 11



NOTE:

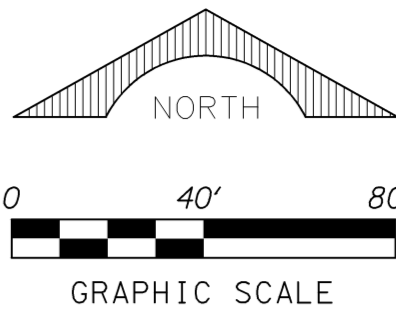
1. THE CITY WILL BE GRANTED AN EASEMENT OVER THE LAKE, CANAL, LAKE MAINTENANCE EASEMENTS (LME), PUBLIC DRAINAGE EASEMENTS (PDE), AND ROADWAY TRACTS.
2. ALL ONSITE DRAINAGE, WATER, & SEWER WILL BE OWNED & MAINTAINED BY THE HOMEOWNERS ASSOCIATION.

Jeffrey T. Schnars, Professional Engineer, State of Florida, License No. 46697.
This item has been digitally signed and sealed by Jeffrey T. Schnars, P.E. on 10/11/2023.
Printed copies of this document are not considered signed and sealed and the signature must be verified on any electronic copies.



ORIOLE
GOLF & TENNIS
CLUB

"ORIOLE GOLF AND TENNIS
CLUB SECTION ONE"
(P.B. 75, PG. 34, B.C.R.)



STRIPING KEY	
A	6" SOLID WHITE
B	8" SOLID WHITE
C	12" SOLID WHITE
D	18" SOLID WHITE
E	24" SOLID WHITE
F	6" SKIP WHITE TYP (10'- 30')
G	6" SKIP WHITE TYP (6'- 10')
H	6" SKIP WHITE TYP (2'- 4')
I	6" SOLID YELLOW
J	18" SOLID YELLOW
K	6" DOUBLE YELLOW
L	6" SKIP YELLOW TYP (10'- 30')
M	6" SKIP YELLOW TYP (6'- 10')
N	6" SKIP YELLOW TYP (2'- 4')
P	RPM BI-DIRECTIONAL AMBER/AMBER
R	FDP WHITE
S	FDP YELLOW
T	RPM BI-DIRECTIONAL WHITE/RED
U	RPM BI-DIRECTIONAL RED/YELLOW
W	RPM BI-DIRECTIONAL BLUE/BLUE
X	6" DOUBLE WHITE
Y	6" SKIP DOUBLE WHITE TYP (2'-4')

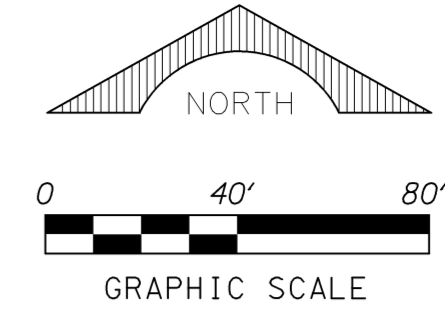
Jeffrey T. Schnars, Professional Engineer, State of Florida, License No. 46697.
This item has been digitally signed and sealed by Jeffrey T. Schnars, P.E. on 10/11/2023.
Printed copies of this document are not considered signed and sealed and the signature must be verified on any electronic copies.

ORIGINAL:	OCT. 2022
REVISIONS:	
1	1/3/23 CITY COMMENTS
2	2/27/23 CITY COMMENTS
3	2/27/23 CITY COMMENTS
4	10/11/23 CITY COMMENTS
5	

PROJECT:	NOVE OF MARGATE	FLORIDA
TASK:	PAVEMENT MARKING & SIGNAGE PLAN	MARGATE

Jeffrey T. Schnars, P.E.
Civil Engineer
Florida Registration No. 46697
(FOR THE FIRM)

JOB NO.	17180
DRAWN	RAD
DESIGNED	JTS
CHECKED	JWM
Q.C.	JTS



MATCH LINE SEE SHEET 6

BLOCK A
"ORIOLE-MARGATE, SECTION 6"
(P.B. 86, PG. 31, B.C.R.)

ORIOLE MARGATE

LAKE
#1

GARDEN PATIO
VILLAS

PORTION OF PARCEL 4
"ORIOLE GOLF AND TENNIS
CLUB SECTION TWO"
(P.B. 78, PG. 21, B.C.R.)

STRIPING KEY

- A - 6" SOLID WHITE
B - 8" SOLID WHITE
C - 12" SOLID WHITE
D - 18" SOLID WHITE
E - 24" SOLID WHITE
F - 6" SKIP WHITE TYP (10'-30')
G - 6" SKIP WHITE TYP (6'-10')
H - 6" SKIP WHITE TYP (2'-4')
I - 6" SOLID YELLOW
J - 18" SOLID YELLOW
K - 6" DOUBLE YELLOW
L - 6" SKIP YELLOW TYP (10'-30')
M - 6" SKIP YELLOW TYP (6'-10')
N - 6" SKIP YELLOW TYP (2'-4')
P - RPM B1-DIRECTIONAL AMBER/AMBER
R - FDP WHITE
S - FDP YELLOW
T - RPM B1-DIRECTIONAL WHITE/RED
U - RPM B1-DIRECTIONAL RED/YELLOW
W - RPM B1-DIRECTIONAL BLUE/BLUE
X - 6" DOUBLE WHITE
Y - 6" SKIP DOUBLE WHITE TYP (2'-4')

MATCH LINE SEE SHEET 8

PARCEL 2
"ORIOLE GOLF AND TENNIS
CLUB SECTION TWO"
(P.B. 78, PG. 21, B.C.R.)

ORIOLE GARDENS
CONDOMINIUM PH 2

PARCEL 2
"ORIOLE GOLF AND TENNIS
CLUB SECTION TWO"
(P.B. 78, PG. 21, B.C.R.)

PARCEL 6
"ORIOLE GOLF AND TENNIS
CLUB SECTION TWO"
(P.B. 78, PG. 21, B.C.R.)

Jeffrey T. Schnars, Professional Engineer, State
of Florida, License No. 46697.
This item has been digitally signed and sealed
by Jeffrey T. Schnars, P.E. on 10/11/2023.
Printed copies of this document are not
considered signed and sealed and the signature
must be verified on any electronic copies.

SCHNARS
ENGINEERING CORPORATION
947 CLINT MOORE ROAD
BOCA RATON, FLORIDA 33487
TEL: (561) 241-1465
FAX: (561) 241-1582
CERTIFICATE OF AUTHORIZATION No. 6640

ORIGINAL: OCT. 2022
REVISIONS:
1 12/23 CITY COMMENTS
2 8/4/23 CITY COMMENTS
3 10/11/23 CITY COMMENTS
4
5

TASK:
PAVEMENT MARKING &
SIGNAGE PLAN

PROJECT:
NOVE OF MARGATE

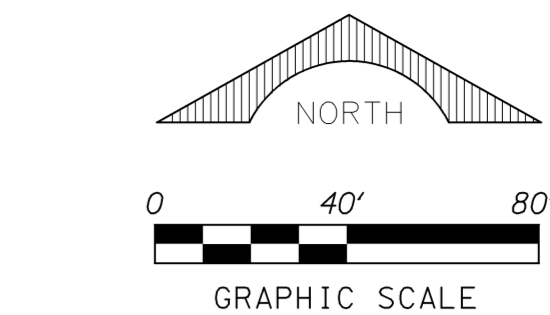
FLORIDA

MARGATE

Jeffrey T. Schnars, P.E.
Civil Engineer
Florida Registration No. 46697
(FOR THE FIRM)

JOB NO. 17180
DRAWN RAD
DESIGNED JTS
CHECKED JWM
Q.C. JTS

10/11/2023
SHEET C6 OF 11



STRIPING KEY

A	= 6" SOLID WHITE
B	= 8" SOLID WHITE
C	= 12" SOLID WHITE
D	= 18" SOLID WHITE
E	= 24" SOLID WHITE
F	= 6" SKIP WHITE TYP (10' - 30')
G	= 6" SKIP WHITE TYP (6' - 10')
H	= 6" SKIP WHITE TYP (2' - 4')
I	= 6" SOLID YELLOW
J	= 18" SOLID YELLOW
K	= 6" DOUBLE YELLOW
L	= 6" SKIP YELLOW TYP (10' - 30')
M	= 6" SKIP YELLOW TYP (6' - 10')
N	= 6" SKIP YELLOW TYP (2' - 4')
P	= RPM BI-DIRECTIONAL AMBER/AMBER
R	= FDP WHITE
S	= FDP YELLOW
T	= RPM BI-DIRECTIONAL RED/YELLOW
U	= RPM BI-DIRECTIONAL RED/RED
V	= RPM BI-DIRECTIONAL BLUE/BLUE
X	= 6" DOUBLE WHITE
Y	= 6" SKIP DOUBLE WHITE TYP (2' - 4')

ORIOLE GARDENS
CONDOMINIUM PH 2

PARCEL 6
"ORIOLE GOLF AND TENNIS
CLUB SECTION TWO"
(P.B. 78, PG. 21, B.C.R.)

Jeffrey T. Schnars, Professional Engineer, State of Florida, License No. 46697.
This item has been digitally signed and sealed by Jeffrey T. Schnars, P.E. on 10/11/2023. Printed copies of this document are not considered signed and sealed and the signature must be verified on any electronic copies.

SCHNARS
ENGINEERING CORPORATION

947 CLINT MOORE ROAD
BOCA RATON, FL ORIDA 33467

TEL (561) 241-6455
FAX (561) 241-5192

ORIGINAL: OCT. 2022

REVISIONS:

1	1/3/23	CITY COMMENTS
2	8/4/23	CITY COMMENTS
3	10/11/23	CITY COMMENTS
4		
5		

PAVEMENT MARKING & SIGNAGE PLAN

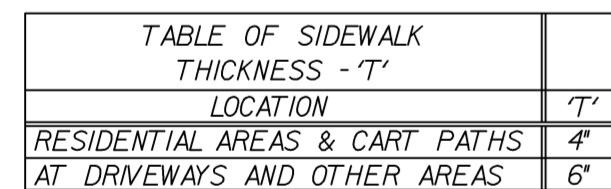
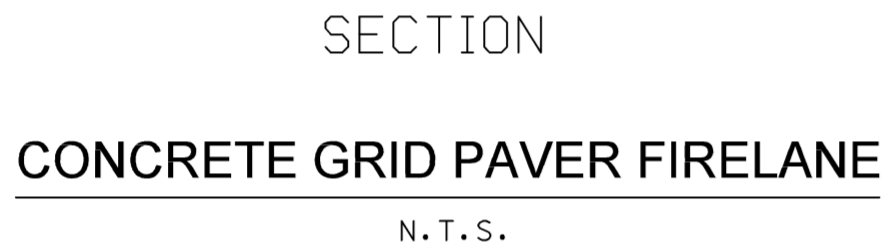
PROJECT:	NOVE OF MARGATE	FLORIDA
----------	-----------------	---------

Jeffrey T. Schnars, P.E.
Civil Engineer
Florida Registration No. 465
(FOR THE FIRM)

JOB NO. 17180
DRAWN RAD
DESIGNED JTS
CHECKED JWM
Q.C. JTS

SHEET C7 OF 11

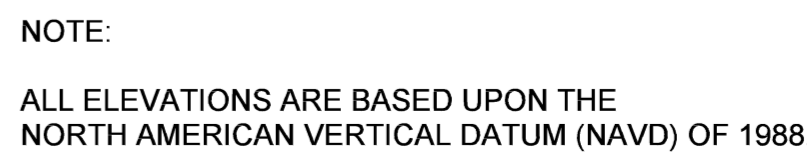
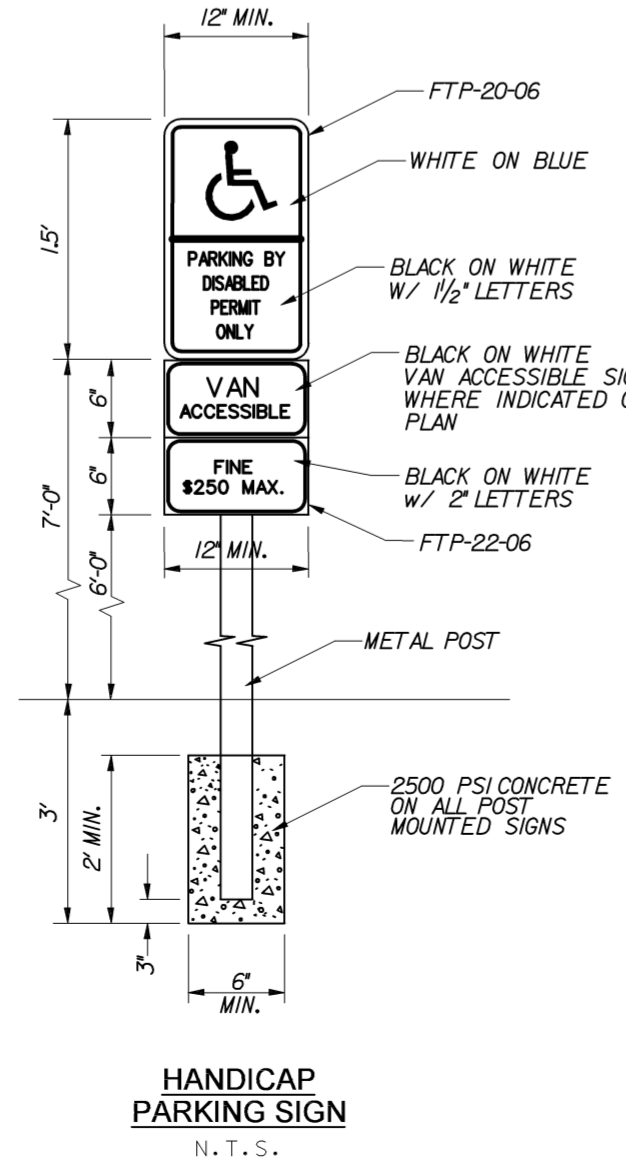
07/11/2023	90.58 AM	\$FILE
------------	----------	--------



NOTES: OF THE DISCRETION OF THE ENGINEER

1. SUBGRADE TO BE A MINIMUM 4" OF CLEAN SAND OR SANDY LOAM COMPACTED TO 95% DENSITY AASHTO T-99.
2. SIDEWALKS TO BE PORTLAND CEMENT CONCRETE, MIN. 2500 PSI @ 28 DAYS.
3. AT DRIVEWAY LOCATIONS, SIDEWALKS SHALL BE 6" THICK AND SHALL INCLUDE 6X6, WILAX14 WELDED WIDE MESH WITH 2' OR LOWER FROM THE BOTTOM AND END.
4. SIDEWALK SLOPES SHALL MEET THE REQUIREMENTS OF THE AMERICAN'S DISABILITIES ACT. SIDEWALKS SHALL HAVE A MAXIMUM TRANSVERSE SLOPE OF .003' PER FOOT. MINIMUM TRANSVERSE SLOPE OF .001' PER FOOT TOWARD THE MAJOR GUTTER AND SHALL BE GIVEN A TRANSVERSE HAIR BRUSH FINISH.
5. RAMPS SHALL BE PROVIDED AT ALL INTERSECTIONS IN ACCORDANCE WITH FOOT INDEX 522-002.

SIDEWALK DETAIL
N.T.S.



Jeffrey T. Schnars, Professional Engineer, State of Florida, License No. 46697.
This item has been digitally signed and sealed by Jeffrey T. Schnars, P.E. on 10/11/2023.
Printed copies of this document are not considered signed and sealed and the signature must be verified on any electronic copies.

FOR SIGN ASSEMBLIES WITH MAXIMUM 8.75 SQUARE FOOT PANEL AREA

Typical Details

STREET ID (D3-1)

Street Name

Isometric View

2-CROSS STREET BLADES

THE ENDS OF THE STREET ID SIGNS MUST BE BOLTED TOGETHER:

BOLTS - #18 HEX HEAD STAINLESS STEEL 5/16" x 3/4"

NUTS - 5/16" HEX HEAD STAINLESS STEEL W/ 3/8" NYLON WASHERS

DETAIL "A"

0.75"

2-1/2" x 10' x 12 ga. PSST

1.75"

Ø17/32" Holes

2 ea. x 4 Sides

min. 8" post insertion

42"

3" x 3" x 42" 7 ga. heavy duty galvanized anchor

38" Burial Depth

Hardware includes 2 each 3/8" x 3-1/2" GR. 8 Flanged Shoulder Bolt and Flange Nut.

DETAIL "A"

0.75"

2-1/2" x 10' x 12 ga. PSST

1.75"

Ø17/32" Holes

2 ea. x 4 Sides

min. 8" post insertion

42"

3" x 3" x 42" 7 ga. heavy duty galvanized anchor

38" Burial Depth

Hardware includes 2 each 3/8" x 3-1/2" GR. 8 Flanged Shoulder Bolt and Flange Nut.

STREET ID (D3-1) MATERIALS:

LETTERS

WHITE TYPE XI SHEETING

LETTERING OF STREET NAME SIGNS SHALL BE COMPOSED OF A COMBINATION OF LOWERCASE LETTERS WITH INITIAL UPPERCASE LETTERS

BORDER

BORDER WIDTHS WILL VARY BASED ON LETTER HEIGHTS

LETTER HEIGHTS - BORDER WIDTHS

4 INCH LETTER = 0.375 INCH BORDER WIDTH

6 INCH LETTER = 0.500 INCH BORDER WIDTH

8 INCH LETTER = 0.750 INCH BORDER WIDTH

GREEN BACKGROUND

GREEN TRANSLUCENT INK SILK-SCREENED CLEAR-COATED OR ELECTRO-CUT (EC) FILM OR EQUIVALENT

LETTER SIZES

SEE MUTCD TABLE 2D-2 (PG. 169)

FOR MINIMUM LETTER HEIGHTS

LENGTH VARIES BY STREET NAME

HARDWARE

BOLTS - #18 HEX HEAD STAINLESS STEEL 5/16" x 3"

NUTS - 5/16" STAINLESS STEEL W/ NYLON WASHERS.

REGULATORY SIGN

WHEN NO STREET ID IS PRESENT

THE STOP SIGN SHALL BE MOUNTED FLUSH TO THE TOP OF THE POST WHILE MAINTAINING 7 FEET MIN. CLEARANCE BETWEEN BOTTOM OF SIGN AND GROUND LEVEL. ANY SIGN INSTALLED BACK TO BACK WITH THE STOP SIGN SHALL BE SMALLER THAN THE STOP SIGN.

STOP, DO NOT ENTER OR YIELD

WHITE TYPE XI SHEETING

PRESSURE SENSITIVE RED TRANSLUCENT INK SILK-SCREENED CLEAR-COATED OR ELECTRO-CUT (EC) FILM OR EQUIVALENT.

HARDWARE

FRONT: #18 HEX HEAD STAINLESS STEEL 5/16" x 3" BOLT

W/ 3/8" NYLON WASHER

BACK: 5/16" HEX HEAD STAINLESS STEEL NUT

W/ 3/8" STAINLESS STEEL WASHER.

NOTES:

1. ALL TYPE XI SHEETING UTILIZED MUST BE ON THE FOOT APL LIST.

2. SEE BOTTED TECHNICAL POLICY MEMO #70M-16-001- SPECIFICATIONS FOR RETROREFLECTIVE TRAFFIC SIGN MATERIALS.

SQUARE TUBE SIGN POST

The Square Tube Sign Post shall consist of a 2.5" square tube inserted into a 2.5" square post receiver. Both tubes will be perforated, hot-dipped galvanized, 12-gauge, grade 50 steel. The post shall be installed into the slip base assembly shown in detail "B".

Notes:

1. Dimensions and certain details for the parts used to assemble the slip base connections are intentionally not shown. Slip base connections are patented manufactured products that are in compliance with NCHRP 350 crash test criteria. The base connection details are only shown on this plan to illustrate how the parts are assembled. The complete assembly must be designed to withstand 150 mph Base Wind Speed per 2013 AASHTO Standard Specifications for Structural Supports for Highway Signs, Luminaires, and Traffic Signals, 6th edition and interims.

2. For standard ground sign installation, see detail entitled "Ground Sign Assembly Details".

FOR SIGN ASSEMBLIES WITH GREATER THAN 8.75 SQUARE FOOT PANEL AREA WITH SUPPLEMENTAL SIGN

Typical Details

Street Name

Supplemental Sign

DETAIL "B"

Triangular Slip Base Assembly For 2-1/2" Perforated Square Tube Sign Post

Slip Washer

Post Receiver

Redi-Torque Bolt

Facing Incoming Traffic

Washer

Flange Nut

2-1/2" Square Post Receiver

REVISIONS

DATE	DESCRIPTION
04-09-2019	UPDATED MATERIAL NOTES
02-28-2020	ADDED ISOMETRIC VIEW
02-05-2021	UPDATED POST BASE HEIGHT

BR^{OW}ARD COUNTY FLORIDA

PUBLIC WORKS DEPARTMENT TRAFFIC ENGINEERING DIVISION

DESIGN BY: CARMELO CARATOZZOLO, P.E.

DRAWN BY: STEPHON RAMOUTAR

CHECKED BY: ANDREW SEBO, P.E., PTOE

SCALE: NTS

STOP SIGN AND STREET IDENTIFICATION ASSEMBLY TYPICAL DETAILS

SHEET NO. 1 OF 1

GUIDE TO USE THIS STANDARD:

1. Calculate the Total Panel Area and the centroid 'C' for an individual sign or a sign cluster.

2. Determine the height 'H' from the groundline for the individual sign or the cluster.

3. Consult the Post Size Table and find the intersection point.

4. Design the post and the foundation according to the required Post Size and Assembly Details.

Post Size Table

H' Sign Assembly Height (ft) (measure from ground)	Total Panel Area (sf)				
	8	8.5	9	9.5	10
3					
4					
5					
6					
7					
8					
9					
10					
11					
12					
13					
14					
15					
16					
17					
18					
19					
20+					

*REGARDLESS OF POST SIZE TABLE, IF A SIGN PANEL IS EQUAL TO OR GREATER THAN 4 FEET IN WIDTH, A TWO POST INSTALLATION IS REQUIRED WITH A TRIANGULAR SLIP BASE.

Sign Post with 3" x 7 ga. Square Anchor

SQUARE TUBE SIGN POST

THE SQUARE TUBE SIGN POST SHALL BE 2.5" SQUARE, PERFORATED, HOT-DIPPED GALVANIZED, 12-GAUGE GRADE 50 STEEL. THE POST SHALL BE INSTALLED WITH IN-GROUND FITTED SLEEVE ANCHOR AS SHOWN IN DETAIL.

2-1/2" x 10' x 12 ga. PSST

3" x 3" x 42" 7 ga. heavy duty galvanized anchor

Hardware includes 2 each 3/8" x 3-1/2" GR. 8 Flanged Shoulder Bolt and Flange Nut.

42"

min. 8" post insertion

0.75"

1.75"

Ø17/32" Holes

2 ea. x 4 Sides

GROUND LEVEL

38" Burial Depth

Sign Post with Triangular Slip Base

SQUARE TUBE SIGN POST

THE SQUARE TUBE SIGN POST SHALL BE 2.5" SQUARE, PERFORATED, HOT-DIPPED GALVANIZED, 12-GAUGE GRADE 50 STEEL. THE POST SHALL BE INSTALLED INTO THE SLIP BASE ASSEMBLY SHOWN IN DETAIL.

2-1/2" Perforated Square Tube Sign Post

Triangular Slip Base Assembly For 2-1/2" Perforated Square Tube Sign Post

Slip Washer

Post Receiver

Redi-Torque Bolt

Facing Incoming Traffic

Washer

Flange Nut

2-1/2" Square Post Receiver

4"

GROUND LEVEL

Note: Dimensions and certain details for the parts used to assemble the slip base connections are intentionally not shown. Slip base connections are patented manufactured products that are in compliance with NCHRP 350 crash test criteria. The base connection details are only shown on this plan to illustrate how the parts are assembled. The complete assembly must be designed to withstand 150 mph Base Wind Speed per 2013 AASHTO Standard Specifications for Structural Supports for Highway Signs, Luminaires, and Traffic Signals, 6th edition and interims.

GROUND SIGN ASSEMBLY DETAILS

SHEET NO. 1 OF 1

PAVEMENT MARKING AND SIGNING NOTES

1. THERMOPLASTIC SHALL CONFORM TO THE REQUIREMENTS OF THE FLORIDA DEPARTMENT OF TRANSPORTATION STANDARD SPECIFICATIONS FOR ROAD AND BRIDGE CONSTRUCTION, SEE SECTION 711-MINIMUM THICKNESS 90 MILS (ALKYD ONLY).
2. ALL SIGNS & MARKINGS SHALL CONFORM TO THE REQUIREMENTS OF THE MANUAL ON UNIFORM TRAFFIC CONTROL DEVICES FOR STREETS AND HIGHWAYS, FDOT ROADWAY AND TRAFFIC DESIGN STANDARDS, AND BROWARD COUNTY TRAFFIC ENGINEERING DIVISION STANDARDS.
3. THERMOPLASTIC SHALL BE USED UNLESS OTHERWISE APPROVED BY BROWARD COUNTY TRAFFIC ENGINEERING DIVISION AND THE CITY ENGINEER. ALL PAVEMENT MARKINGS SHALL BE THERMOPLASTIC EXCEPT PARKING SPACE MARKINGS WHICH SHALL BE PAINT.
4. THESE INSTALLATIONS SHALL BE IN ACCORDANCE WITH THE FLORIDA DEPARTMENT OF TRANSPORTATION STANDARD SPECIFICATIONS FOR ROAD AND BRIDGE CONSTRUCTION LATEST EDITION. HOWEVER, WHERE CONFLICTS EXIST, THIS TYPICALLY SHALL TAKE PRECEDENT OVER FDOT STANDARD SPECIFICATIONS.
5. ONE BLUE / BLUE REFLECTIVE PAVEMENT MARKER SHALL BE PLACED IN THE MIDDLE OF THE TRAFFIC LANE NEAREST TO AND DIRECTLY IN FRONT OF THE FIRE HYDRANT.
6. ALL R1-1 STOP SIGNS SHALL BE 30" x 30" AND ALL R1-1, R2-1, R5-1 AND D-3's SHALL BE DIAMOND GRADE, TYPE XI SHEETING.
7. ALL HANDICAP SPACES, RAMPS, AND ACCESS AREAS SHALL COMPLY IN STRICT ACCORDANCE WITH THE "2012 FLORIDA ACCESSIBILITY CODE FOR BUILDING CONSTRUCTION" AND THE "2010 ADA STANDARDS FOR ACCESSIBLE DESIGN". ANY DISCREPANCY IN THE CODE OR ON THE PLAN SHALL BE CALLED TO THE ENGINEERS ATTENTION PRIOR TO CONSTRUCTION.
8. PAVEMENT MARKINGS LOCATED IN BRICK PAVERS SHALL BE THE APPROPRIATE COLOR AND HIGH INTENSITY REFLECTORIZED BRICK PAVERS PER FDOT STANDARDS. COLORED BRICK PAVERS IN PARKING SPACES DO NOT NEED TO BE REFLECTORIZED.
9. ALL SIGNS REQUIRE A SEPARATE BUILDING PERMIT.
10. PARKING SPACES ARE NOT REQUIRED TO BE REFLECTORIZED.
11. ALL REFLECTIVE PAVEMENT MARKERS SHALL BE INSTALLED PER BROWARD COUNTY TRAFFIC ENGINEERING STANDARDS, SHALL BE CLASS "B", AND APPROVED BY BROWARD COUNTY TRAFFIC ENGINEERING AND THE CITY ENGINEER BEFORE INSTALLATION.
12. ALL PAVEMENT MARKINGS AND SIGNAGE SHALL CONFORM TO BROWARD COUNTY TRAFFIC ENGINEERING STANDARDS (LATEST EDITION).
13. ALL TRAFFIC CONTROL DEVICES MAINTAINED BY BROWARD COUNTY THAT ARE REMOVED OR DAMAGED BY CONSTRUCTION, SHALL BE REPLACED BY CONTRACTOR USING CURRENT BROWARD COUNTY TRAFFIC ENGINEERING DIVISION STANDARDS.
14. CONFLICTING EXISTING PAVEMENT MARKINGS SHALL BE REMOVED BY WATER BLASTING OR SAND BLASTING.

Jeffrey T. Schnars, Professional Engineer, State of Florida, License No. 46697.
This item has been digitally signed and sealed by Jeffrey T. Schnars, P.E. on 10/11/2023.
Printed copies of this document are not considered signed and sealed and the signature must be verified on any electronic copies.

SCHNARS ENGINEERING CORPORATION

947 CLINT MOORE ROAD
BOCA RATON, FLORIDA 33487
TEL: (561) 241-1455
FAX: (561) 241-5182

ORIGINAL: OCT. 2022

REVISIONS:

NO.	DATE	REVISIONS
1	10/23/23	CITY COMMENTS
2	10/11/23	CITY COMMENTS
3		
4		
5		

TASK:

CONSTRUCTION DETAILS

PROJECT:

NOVE OF MARGATE

FLORIDA

MARGATE

SCALE

Jeffrey T. Schnars, P.E.
Civil Engineer
Florida Registration No. 46697
(FOR THE FIRM)

JOB NO. 17180

DRAWN RAD

DESIGNED JTS

CHECKED JWM

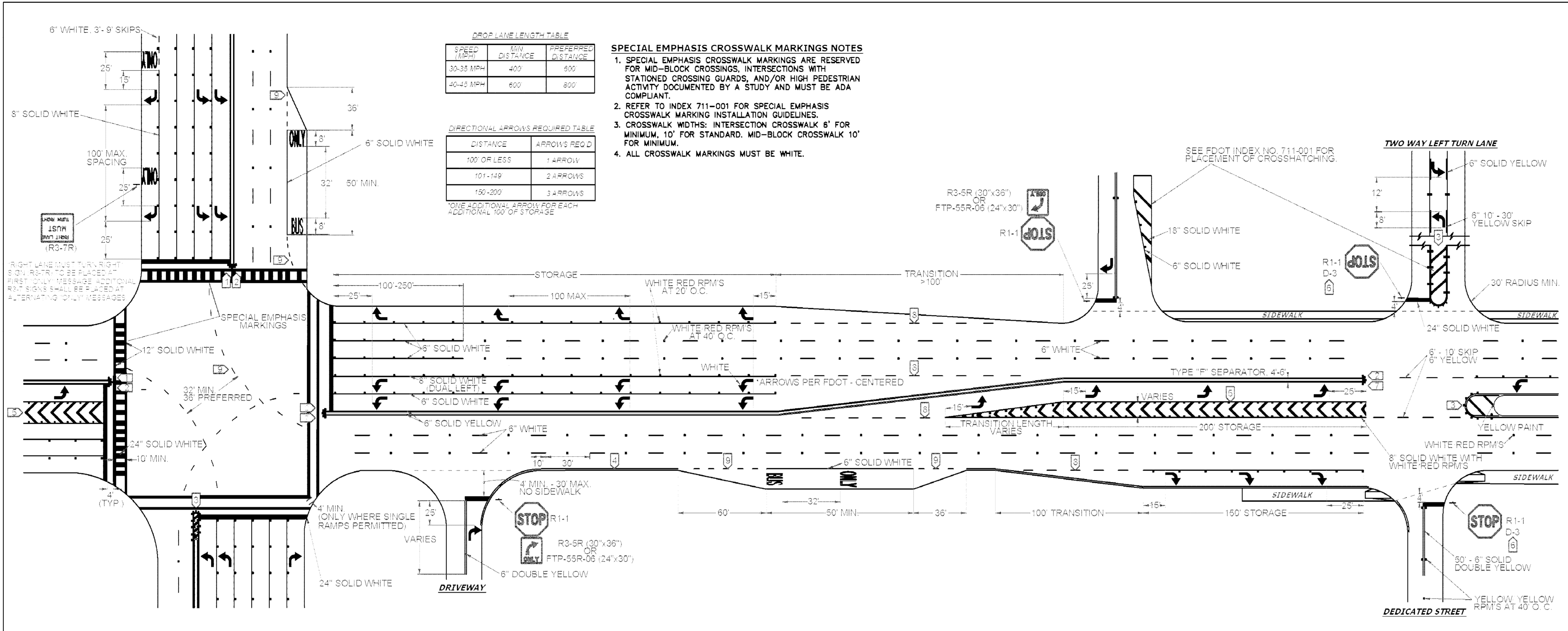
Q.C. JTS

SHEET C9 OF 11

10/11/2023

5:05:27 AM

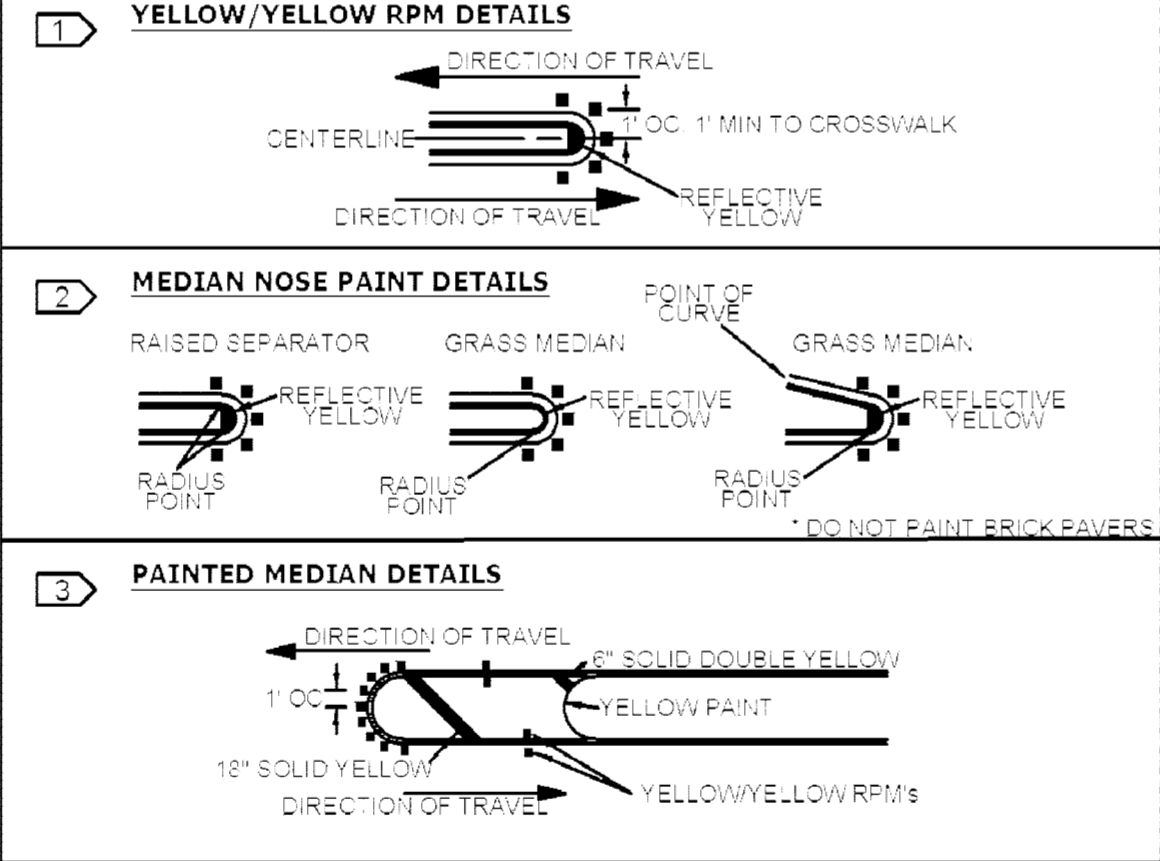
8/11/23



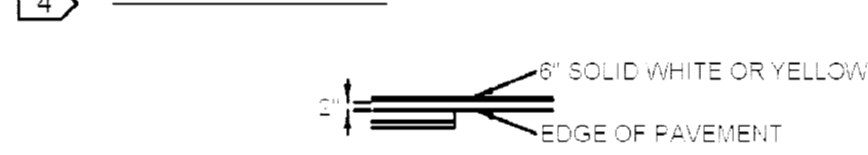
NOTES

1. ALL PAVEMENT MARKINGS SHALL BE ALKYD BASED THERMOPLASTIC AND FULLY RETROREFLECTORIZED.
2. ALL PAVEMENT MARKINGS ON PAVER SYSTEMS SHALL BE 3M 380/381 SERIES TAPE OR EQUIVALENT AND APPLIED WITH P60 ADHESIVE AS PER MANUFACTURERS SPECIFICATIONS.
3. ALL PAVEMENT MARKINGS AND SIGNING SHALL BE IN ACCORDANCE WITH THE "MANUAL ON UNIFORM TRAFFIC CONTROL DEVICES", BCTED STANDARDS, AND FDOT DESIGN STANDARDS.
4. SEE FDOT INDEX NO 706-001 FOR PLACEMENT OF RPM'S (FOR BULLNOSE RPM TREATMENT, SEE LEGEND NO. 1)
5. RPM'S SHALL BE CLASS "B" OR EQUIVALENT, APPLIED WITH EPOXY OR BITUMINOUS ADHESIVE.
6. FDOT APPROVED SEALER SHALL BE USED WHEN APPLYING MARKINGS ON CONCRETE.
7. FOR BIKE LANE DETAILS SEE FDOT INDEX NO. 711-002.
8. EXISTING MARKINGS SHALL BE REMOVED BY WATER BLASTING OR SAND BLASTING.
9. ALL STOP LINES TO BE 4' BEHIND CROSSWALK OR SIDEWALK.
10. PAVEMENT MARKING REFLECTIVITY SHALL BE UNIFORM ACROSS THE ENTIRE STRIPE AND SHALL HAVE A MINIMUM REFLECTIVITY READING OF 250 MILLICANDELAS FOR WHITE AND 175 MILLICANDELAS FOR YELLOW.
11. ALL PRODUCTS MUST BE ON FDOT'S APPROVED PRODUCTS LIST (APL).
12. RPM'S SHALL NOT BE INSTALLED ADJACENT TO BIKE LANES.
13. LONGITUDINAL CROSSWALK MARKINGS SHALL BE INSTALLED AT ALL CROSS STREETS ON COUNTY ROADS THAT ARE FOUR LANES OR GREATER.

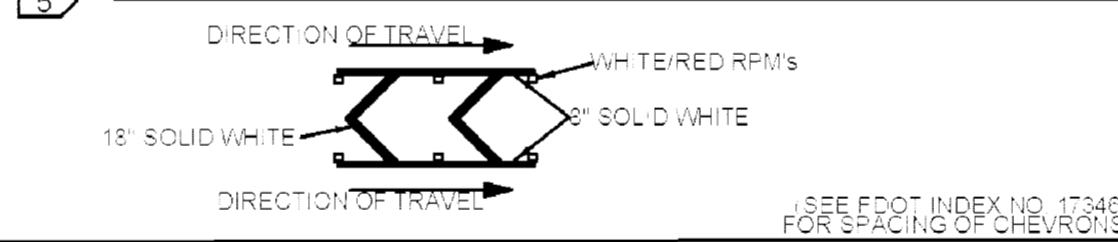
LEGEND



EDGE LINE DETAILS



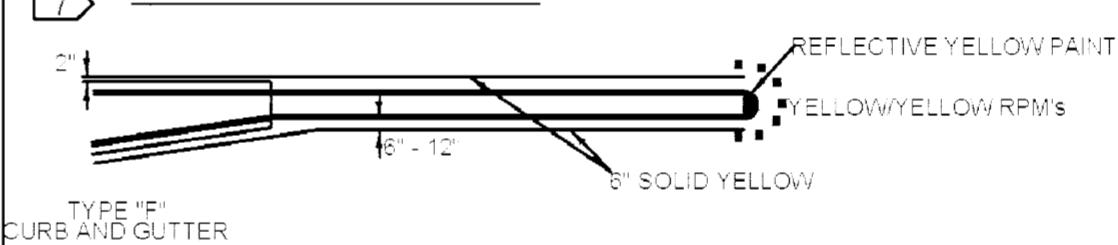
CHEVRON DETAILS - CROSSWALK AREAS AND IN FRONT OF CURB RAMPS



STREET NAME BLADE DETAILS

SEE BCTED STOP SIGN AND STREET IDENTIFICATION ASSEMBLY TYPICAL DETAILS

TYPE IV SEPARATOR DETAILS



6'-10' SKIP DETAILS

- 6'-10' SKIPS 6" WHITE SHALL BE USED FOR THE FOLLOWING CONDITIONS
 - TRANSITIONS AT ALL LEFT AND RIGHT TURN LANES

2'-4' SKIP DETAILS

- 2'-4' SKIPS 6" WHITE SHALL BE USED FOR THE FOLLOWING CONDITIONS
 - RADIUS GUIDE LINES BETWEEN DUAL LEFT'S TURN MOVEMENT (90' RADIUS) PREFERRED OR AS NOTED ON PLANS
 - BUS BAY TRANSITIONS

STOP SIGN NOTE
WHERE SIDE ROADS INTERSECT A MULTI LANE STREET OR HIGHWAY THAT HAS A SPEED LIMIT OF 45 MPH OR HIGHER, THE MINIMUM SIZE OF THE STOP SIGNS FACING THE SIDE ROAD APPROACHES, EVEN IF THE SIDE ROAD ONLY HAS ONE APPROACH LANE, SHALL BE 36"x36".
WHERE SIDE ROADS INTERSECT A MULTI-LANE (INCLUDING TURN LANE) STREET OR HIGHWAY THAT HAS A SPEED LIMIT OF 40 MPH OR LOWER, THE MINIMUM SIZE OF THE STOP SIGN FACING THE SIDE ROAD APPROACHES SHALL BE 36"x36".

NOTES:

1. BROWARD COUNTY TRAFFIC ENGINEERING DIVISION'S REVIEW DOES NOT INCLUDE A REVIEW AND ACCEPTANCE OF THE PROJECT'S DESIGN OR OPERATION. THESE ITEMS ARE TO BE REVIEWED AND APPROVED BY THE CITY ENGINEER.
2. BROWARD COUNTY TRAFFIC ENGINEERING DIVISION DOES NOT REVIEW AND APPROVE, OR INSPECT, AND ACCEPT THE FOLLOWING ITEMS FOR MAINTENANCE: PAVEMENT MARKINGS ON OR ADJACENT TO PAVER BRICKS, PAINTED ASPHALT, STAMPED ASPHALT OR PAVEMENT MARKINGS MADE OF PAVER BRICKS, RAISED INTERSECTIONS AND RELATED MARKINGS AND SIGNING, UN-WARRANTED MID-BLOCK CROSSWALKS AND RELATED MARKINGS AND SIGNING, UN-WARRANTED CROSSWALKS AND RELATED MARKINGS AND SIGNING, PAINTED/DECORATIVE CROSSWALKS, RAISED CROSSWALKS AND RELATED MARKINGS AND SIGNING, ADVANCED WARNING PAVEMENT MARKINGS FOR SPEED TABLES, BLINKER SIGNS, RECTANGULAR RAPID FLASHER BEACONS AND RELATED MARKINGS AND SIGNING, ON-STREET PARKING AND RELATED MARKINGS AND SIGNING, GREEN BIKE LANES, FLEXIBLE DELINEATORS, DECORATIVE SIGNS AND DECORATIVE SIGN POSTS, PLANTERS, ON-SITE PAVEMENT MARKINGS AND SIGNING, OFF-SITE PAVEMENT MARKINGS AND SIGNING IN RIGHT-OF-WAY THAT IS NOT DEDICATED FOR PUBLIC USE, SIDEWALK WORK OR ASPHALT WORK.
3. THE CITY ENGINEER IS RESPONSIBLE FOR THE REVIEW AND APPROVAL OF THE DESIGN AND OPERATION OF THE PROJECT, AND FOR THE INSPECTION AND ACCEPTANCE OF THE FOLLOWING ITEMS THAT WILL BE MAINTAINED BY THE CITY: PAVEMENT MARKINGS ON OR ADJACENT TO PAVER BRICKS, PAINTED ASPHALT, STAMPED ASPHALT OR PAVEMENT MARKINGS MADE OF PAVER BRICKS, PAVEMENT MARKINGS ON OR ADJACENT TO PAINTED ASPHALT, RAISED INTERSECTIONS AND RELATED MARKINGS AND SIGNING, UN-WARRANTED MID-BLOCK CROSSWALKS AND RELATED MARKINGS AND SIGNING, UN-WARRANTED CROSSWALKS AND RELATED MARKINGS AND SIGNING, PAINTED/DECORATIVE CROSSWALKS, RAISED CROSSWALKS AND RELATED MARKINGS AND SIGNING, ADVANCED WARNING PAVEMENT MARKINGS FOR SPEED TABLES, BLINKER SIGNS, RECTANGULAR RAPID FLASHER BEACONS AND RELATED MARKINGS AND SIGNING, ON-STREET PARKING AND RELATED MARKINGS AND SIGNING, IN-ROAD LIGHTING AND RELATED MARKINGS AND SIGNING, GREEN BIKE LANES, FLEXIBLE DELINEATORS, DECORATIVE SIGNS AND DECORATIVE SIGN POSTS, PLANTERS, ON-SITE PAVEMENT MARKINGS AND SIGNING, OFF-SITE PAVEMENT MARKINGS AND SIGNING IN RIGHT-OF-WAY THAT IS NOT DEDICATED FOR PUBLIC USE, SIDEWALK WORK AND ASPHALT WORK.
4. ALL TRAFFIC CONTROL DEVICES MAINTAINED BY BROWARD COUNTY, THAT ARE REMOVED OR DAMAGED BY CONSTRUCTION, SHALL BE REPLACED BY CONTRACTOR USING CURRENT BROWARD COUNTY TRAFFIC ENGINEERING DIVISION STANDARDS.

REVISIONS		BROWARD COUNTY FLORIDA		PUBLIC WORKS DEPARTMENT TRAFFIC ENGINEERING DIVISION		PAVEMENT MARKINGS AND SIGNS DETAILS		SHEET NO. 1 OF 1	
DATE	DESCRIPTION								
11-24-2020	UPDATED NOTES								
04-14-2021	UPDATED NOTES								
05-06-2022	UPDATED NOTES			DESIGN BY: CARMELO CARATOZZOLO, P.E.	SCALE: NTS				
				DRAWN BY: STEPHON RAMOUTAR					
				CHECKED BY: CARMELO CARATOZZOLO, P.E.					

Jeffrey T. Schnars, Professional Engineer, State of Florida, License No. 46697.
This item has been digitally signed and sealed by Jeffrey T. Schnars, P.E. on 10/11/2023.
Printed copies of this document are not considered signed and sealed and the signature must be verified on any electronic copies.

ORIGINAL: OCT. 2022	
REVISIONS:	
1 12/23 CITY COMMENTS	
2 10/11/23 CITY COMMENTS	
3	
4	
5	

CONSTRUCTION DETAILS

NOVE OF MARGATE

MARGATE FLORIDA

SEAL

JOB NO.	17180
DRAWN	RAD
DESIGNED	JTS
CHECKED	JWM
Q.C.	JTS



LEGEND

- EXISTING CANAL
EDGE OF WATER
- PROPOSED LAKE & CANAL
EDGE OF WATER

Jeffrey T. Schnars, Professional Engineer, State of Florida, License No. 46697.
This item has been digitally signed and sealed by Jeffrey T. Schnars, P.E. on 10/11/2023.
Printed copies of this document are not considered signed and sealed and the signature must be verified on any electronic copies.

ORIGINAL : AUG. 2023

REVISIONS:

1 10/11/23 CITY COMMENTS

2

3

4

5

PROJECT:

NOVE OF MARGATE

MARGATE

TASK:

CANAL EXHIBIT

FLORIDA

SCAL

JEFFREY T. SCHNARS, P.E.
Florida Registration No. 46697
(FOR THE FIRM)

JOB NO. 17180
DRAWN RAD
DESIGNED JTS
CHECKED JWM
Q.C. JTS

SHEET 11 OF 11

SCHNARS

ENGINEERING CORPORATION

947 CLINT MOORE ROAD

BOCA RATON, FLORIDA 33487

CERTIFICATE OF AUTHORIZATION No. 6840

TEL: (561) 241-6455

FAX: (561) 241-5162

#1/12/23

#1/12/23

#1/12/23