

OWNER / DEVELOPER: HJM, LLC
5060 N.W. 175 AVENUE
CORAL SPRINGS, FL 33076

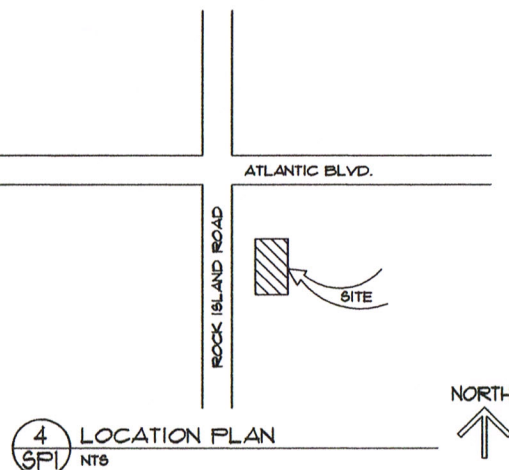
PLANNER/DESIGNER: ATLANTIC ENGINEERING SERVICES, INC.
200 C2 CROSSWINDS DRIVE
WEST PALM BEACH, FLORIDA 33413
(561) 358-4140

SURVEYOR: ACCURATE LAND SURVEYORS
1800 E ATLANTIC BLVD.
FORT PIERCE BEACH, FL 33906
(888) 780-1441

CIVIL ENGINEER: ATLANTIC ENGINEERING SERVICES, INC.
200 C2 CROSSWINDS DRIVE
WEST PALM BEACH, FLORIDA 33413
(561) 358-4140

2
SPI
DESIGN TEAM

3
SPI
SITE PLAN DATA



4
SPI
LOCATION PLAN
NTS

PROJECT NAME: ROCK ISLAND PLAZA
EXISTING ZONING: C-2
PARCEL ID: 4841 35 01 2660

TOTAL SITE AREA: 39,201 SF / 0.90 AC
TOTAL BUILDING AREA: 9,351 SF (23.8%)

BUILDING 'A':
RETAIL: 4,094 SF
MERCANTILE: 1,003 SF
TOTAL: 5,097 SF

BUILDING 'B':
TOTAL: 2,660 SF

TOTAL: 7,757 SF

MAX. HEIGHT (MEAN ROOF): 30 FT.
FLOOR AREA / LOT AREA RATIO: 23.8%
BUILDING COVERAGE: 23.8%

PERVIOUS AREA (7,403 SF): 18.6%
IMPERVIOUS AREA (22,441 SF): 57.1%

PARKING REQUIRED: 30 SPACES

BUILDING 'A':
4,094 - 1,468 (= 30% STORAGE)
3,426 SF @ 300 SF/PARKING SPACE
= 12 SPACES

DUNKIN DONUT:
20 x 63 = 12
391 SF (NET SEATING AREA)
30 SF/PARKING
= 13 SPACES

MEDICAL OFFICE:
2,660 - 750 (= 30% STORAGE)
1,910 SF @ 150 SF/PARKING
= 13 SPACES

TOTAL REQUIRED = 30 SPACES
HANDICAP SPACES REQUIRED = 2 SPACES
HANDICAP SPACES PROVIDED = 2 SPACES
TOTAL PARKING SPACES PROVIDED = 30 SPACES

REV.	DESCRIPTION	DATE
1		
2		
3		
4		
5		
6		

INTIAZ AHMED, P.E.
LICENSED ENGINEER NO. 46102
STATE OF FLORIDA

SEAL

ROCK ISLAND PLAZA
MARGATE
FLORIDA

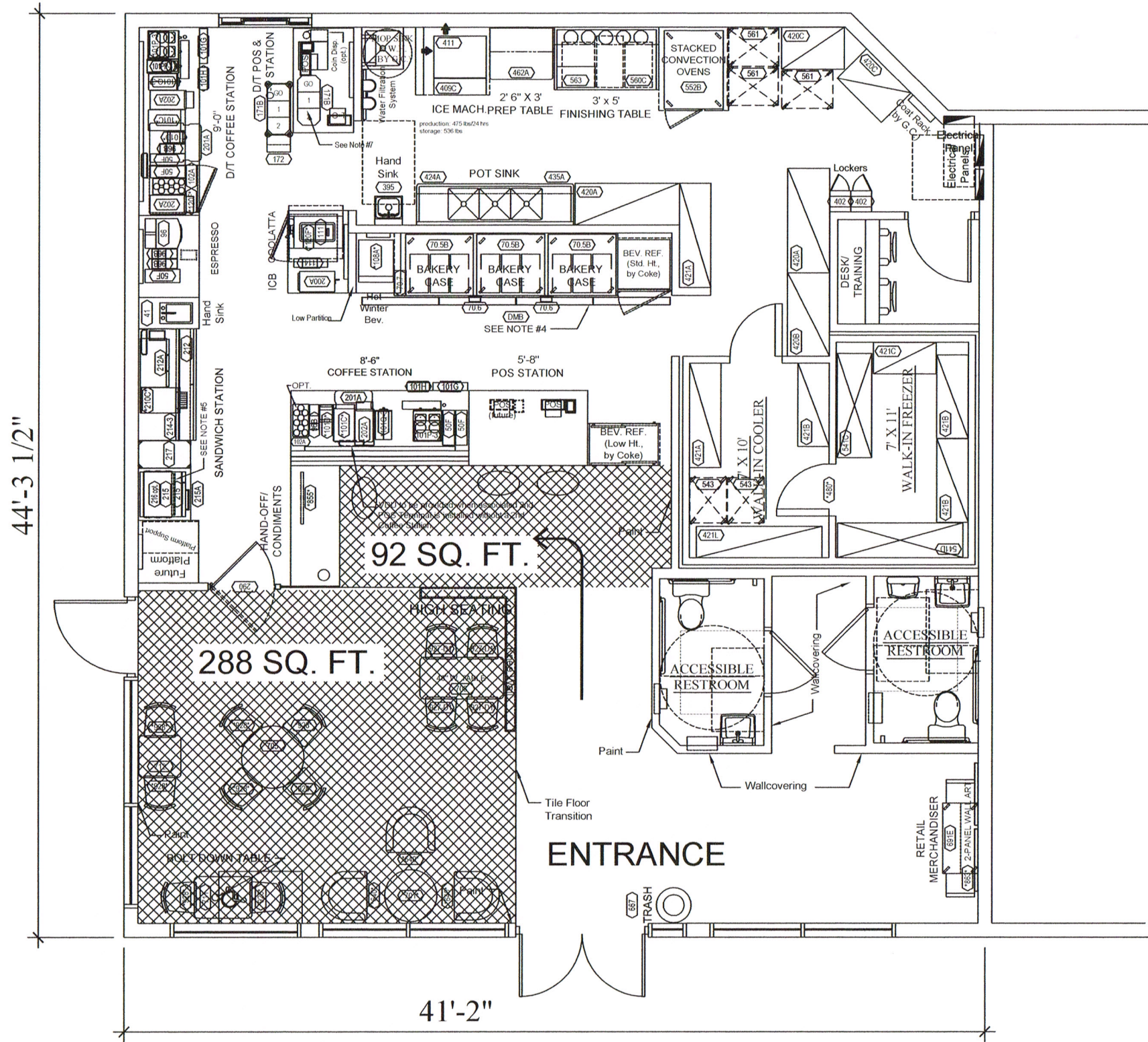
ATLANTIC ENGINEERING SERVICES, INC.

200 C2 CROSSWINDS DRIVE
WEST PALM BEACH, FLORIDA 33413
PHONE - (561) 358-4140
FAX - (561) 968-9242
CERTIFICATE OF AUTHORIZATION NO.: 9390

SCALE: AS SHOWN

DES.	DDT
DWN.	CHK
SHEET NUMBER	
SP1	
SHT 1 of	
DATE DRAWN	
06/04/13	

SITE PLAN



288 SQ. FT.
+ 92 SQ. FT.
SEATING AREA = 380 SQ. FT.

380 SQ. FT.
30 SQ. FT./ PARKING SPACE
PARKING SPACES = 13

REVISIONS

ROCK ISLAND PLAZA
DUNKIN DONUTS
MARGATE, FLORIDA

ATLANTIC ENGINEERING SERVICES, INC.

200 C2 CROSSWINDS DRIVE
WEST PALM BEACH, FLORIDA 33413
PHONE - (561) 358-4140
FAX - (561) 966-9242
CERTIFICATE OF AUTHORIZATION NO.: 9390

DATE: MARCH 15, 2014

IMTIAZ AHMED, P.E.
LICENSED ENGINEER NO. 46102
STATE OF FLORIDA

SEAL

	DDT	
DES.	DWN.	CHK.
SHEET NUMBER		
SP2		
SHT 2 of 3		
DATE DRAWN		
02/25/09		

ROCK ISLAND PLAZA

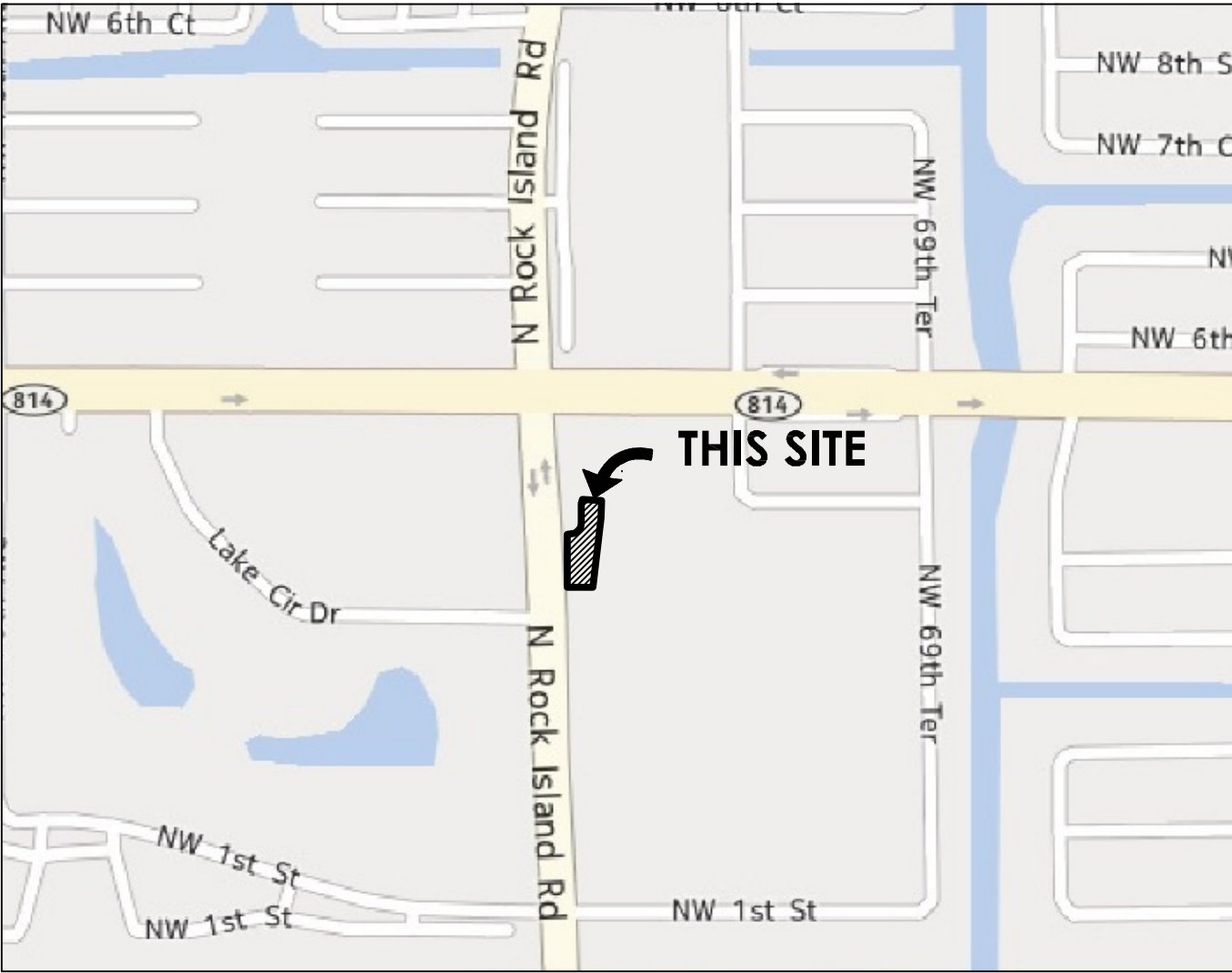
MARGATE, BROWARD COUNTY, FLORIDA

GENERAL NOTES:

1. THE LOCATION OF ALL EXISTING UTILITIES ON THE PLAN IS APPROXIMATE. THE CONTRACTOR SHALL LOCATE AND EXPOSE ALL EXISTING UTILITIES TO BE CONNECTED SUFFICIENTLY AHEAD OF CONSTRUCTION TO ALLOW REDESIGN BY THE ENGINEER IF SUCH UTILITIES ARE FOUND TO BE DIFFERENT THAN SHOWN ON THESE PLANS.
2. THE CONTRACTOR SHALL PROTECT ALL UTILITIES AND OTHER IMPROVEMENTS SHOWN ON THESE PLANS AND OTHER UTILITIES AND OTHER IMPROVEMENTS NOT SHOWN. THE CONTRACTOR SHALL ASSUME ALL RESPONSIBILITY FOR REPAIRS OF UTILITIES AND OTHER IMPROVEMENTS DAMAGED DURING CONSTRUCTION, AND SHALL MAINTAIN SUFFICIENT PROTECTION TO ALL UTILITIES REQUIRED TO PROTECT THEM FROM DAMAGE AND TO PROTECT THE PUBLIC DURING CONSTRUCTION.
3. CONTRACTOR SHALL CONTACT THE CITY OF MARGATE ENGINEERING DEPARTMENT 48 HOURS PRIOR TO COMMENCING CONSTRUCTION.
4. THE CONTRACTOR SHALL NOTIFY FLORIDA POWER & LIGHT CO., SOUTHERN BELL TELEPHONE CO., THE LOCAL WATER AND SEWER UTILITY COMPANIES AND ANY OTHER UTILITY COMPANY WHICH MAY HAVE THEIR UTILITIES WITHIN THE CONSTRUCTION AREAS BEFORE BEGINNING CONSTRUCTION.
5. A PRE-CONSTRUCTION MEETING IS TO BE HELD BETWEEN THE CITY OF MARGATE, THE UTILITY COMPANIES, ENGINEER OF RECORD AND CONTRACTOR PRIOR TO COMMENCEMENT OF CONSTRUCTION.
6. THE CONTRACTOR MUST NOTIFY THE CITY OF MARGATE UTILITIES DEPARTMENT 48 HOURS PRIOR TO TYING INTO ANY EXISTING STRUCTURES AND HAVE AN INSPECTOR PRESENT.
7. PLANS AND SPECIFICATIONS REQUIRE THAT COMPACTED BACKFILL BE PLACED ALONG SIDE OF AND OVER ALL UTILITIES. THE ENGINEER MAY REQUIRE THAT COMPACTION TESTS BE TAKEN TO VERIFY BACKFILL COMPACTION. THE COSTS OF SUCH COMPACTION TESTS WILL BE BORNE BY THE CONTRACTOR.
8. ELEVATIONS SHOWN HEREON ARE BASED ON THE NATIONAL GEODETIC VERTICAL DATUM OF 1929.
9. THE SEQUENCE OF CONSTRUCTION SHALL BE SUCH THAT ALL UNDERGROUND INSTALLATIONS OF EVERY KIND (INCLUDING SPRINKLERS) SHALL BE PLACED BENEATH THE PAVEMENT AND ITS EDGE PRIOR TO THE CONSTRUCTION OF PAVEMENT. THE PAVEMENT SHALL NOT BE CUT WITHOUT PRIOR APPROVAL OF THE ENGINEER.
10. ALL LABOR, MATERIALS AND METHODS OF CONSTRUCTION SHALL BE IN STRICT ACCORDANCE WITH THE MINIMUM ENGINEERING AND CONSTRUCTION STANDARDS ADOPTED BY THE CITY OF MARGATE UTILITIES DEPARTMENT AND THE PLANS AND CONSTRUCTION SPECIFICATIONS. WHERE CONFLICTS OR OMISSIONS EXIST, THE CITY OF MARGATE UTILITIES DEPARTMENT STANDARDS SHALL DICTATE. SUBSTITUTIONS AND DEVIATIONS FROM PLANS AND SPECIFICATIONS SHALL BE PERMITTED ONLY WHEN WRITTEN APPROVAL HAS BEEN ISSUED BY THE ENGINEER.
11. CONSTRUCTION INSPECTION WILL BE PERFORMED BY THE ENGINEER AND IS REQUIRED. THE CONTRACTOR SHALL NOTIFY THE ENGINEER AT LEAST 48 HOURS BEFORE BEGINNING CONSTRUCTION, AND AT LEAST 48 HOURS BEFORE REQUIRING INSPECTION OF EACH AND EVERY PHASE OF WORK.
12. CONSTRUCTION SURVEYING WILL BE PERFORMED BY THE ENGINEER OR SURVEYORS DESIGNATED BY THE OWNER. THE CONTRACTOR SHALL CONTACT THE SURVEYOR NOT LESS THAN 48 HOURS BEFORE THE SURVEYORS ARE NEEDED ON-SITE TO STAKE OUT ANY PHASE OF WORK. THE CONTRACTOR SHALL ASSUME THE RESPONSIBILITY OF PROTECTING ALL SURVEY STAKES AND MONUMENTS. REPLACEMENT COSTS OF ALL STAKES SHALL BE BORNE BY THE CONTRACTOR.
13. THE CONTRACTOR SHALL MAINTAIN A CURRENT SET OF APPROVED CONSTRUCTION PLANS ON THE JOB SITE DURING ALL PHASES OF CONSTRUCTION.
14. SHOP DRAWINGS OF ALL MATERIALS BEING USED SHALL BE SUBMITTED TO THE ENGINEER FOR APPROVAL PRIOR TO INSTALLATION. THE DRAWINGS WILL THEN BE FORWARDED TO THE CITY OF MARGATE UTILITIES DEPARTMENT AND ENGINEERING DEPARTMENT.
15. CONTRACTOR TO MAINTAIN THE TRAFFIC DURING THE CONSTRUCTION OF OFF-SITE UTILITIES AND KEEP STREET OPEN EVERYDAY AFTER DAILY CONSTRUCTION IS COMPLETED, AS REQUIRED BY THE CITY OF MARGATE.
16. THE CONTRACTOR IS NOT ALLOWED TO CLOSE STREET TRAFFIC DURING VERTICAL CONSTRUCTION (BUILDINGS) PER CITY OF MARGATE.
17. MAINTENANCE OF TRAFFIC FOR PUBLIC STREETS SHALL BE PROPERLY COORDINATED WITH THE CITY OF MARGATE AS REQUIRED BY THE CITY.
18. THE PUBLIC ROADWAY(S) INDICATED IN THESE PLANS HAS BEEN DESIGNED IN ACCORDANCE WITH THE "MANUAL OF UNIFORM MINIMUM STANDARDS FOR DESIGN, CONSTRUCTION AND MAINTENANCE FOR STREETS AND HIGHWAYS - STATE OF FLORIDA."
19. THE PUBLIC ROADWAYS INDICATED IN THESE PLANS HAVE BEEN DESIGNED IN ACCORDANCE WITH FDOT "DESIGN STANDARDS".
20. ALL WORK DONE WITHIN THE RIGHT OF WAY OF ROCKISLAND ROAD SHALL BE IN ACCORDANCE WITH THE BROWARD COUNTY MINIMUM STANDARDS.

LEGAL DESCRIPTION:

THAT PART OF PARCEL C, ORIOLE-MARGATE SECTION 3, ACCORDING TO THE PLAT THEREOF, AS RECORDED IN PLAT BOOK 74, PAGE 45, OF THE PUBLIC RECORDS OF BROWARD COUNTY, FLORIDA, BEING MORE PARTICULARLY DESCRIBED AS FOLLOWS: COMMENCING AT THE SOUTHEAST CORNER OF SAID PARCEL C; THENCE NORTH 05°07'13" EAST, ALONG THE EAST LINE OF SAID PARCEL C, A DISTANCE OF 725.10 FEET TO THE POINT OF BEGINNING; THENCE SOUTH 88°20'22" WEST, A DISTANCE OF 107.61 FEET TO A POINT ON THE WEST LINE OF SAID PARCEL C; THENCE NORTH 01°39'38" WEST, ALONG SAID WEST LINE, A DISTANCE OF 223.69 FEET; THENCE NORTH 83°32 '32" EAST, A DISTANCE OF 16.49 FEET TO A POINT OF CURVATURE OF A CURVE CONCAVE TO THE NORTHWEST; THENCE EASTERLY AND NORTHERLY ALONG THE ARC OF SAID CURVE, HAVING A RADIUS OF 45.67 FEET, A CENTRAL ANGLE OF 85°12'10", AN ARC DISTANCE OF 67.91 FEET TO A POINT OF TANGENCY; THENCE NORTH 01°39'38" WEST, A DISTANCE OF 83.48 FEET TO A POINT OF CURVATURE OF A CURVE CONCAVE TO THE EAST; THENCE NORTHERLY ALONG THE ARC OF SAID CURVE, HAVING A RADIUS OF 38.97 FEET, A CENTRAL ANGLE OF 25°09'25", AN ARC DISTANCE OF 17.11 FEET TO A POINT ON THE WESTERLY EXTENSION OF THE NORTH LINE OF PARCEL A, SAID PLAT OF ORIOLE-MARGATE SECTION 3; THENCE SOUTH 88°56'25" EAST, ALONG SAID WESTERLY EXTENSION, A DISTANCE OF 82.71 FEET TO THE NORTHWEST CORNER OF SAID PARCEL A; THENCE SOUTH 00°06'56" WEST, ALONG THE EAST LINE OF SAID PARCEL C, A DISTANCE OF 75.20 FEET; THENCE SOUTH 05°07'13" WEST, ALONG THE EAST LINE OF SAID PARCEL C, A DISTANCE OF 293.60 FEET TO THE POINT OF BEGINNING. SAID LANDS LYING IN THE CITY OF MARGATE, BROWARD COUNTY, FLORIDA, CONTAINING 0.908 ACRES, MORE OR LESS.



LOCATION MAP
NOT TO SCALE

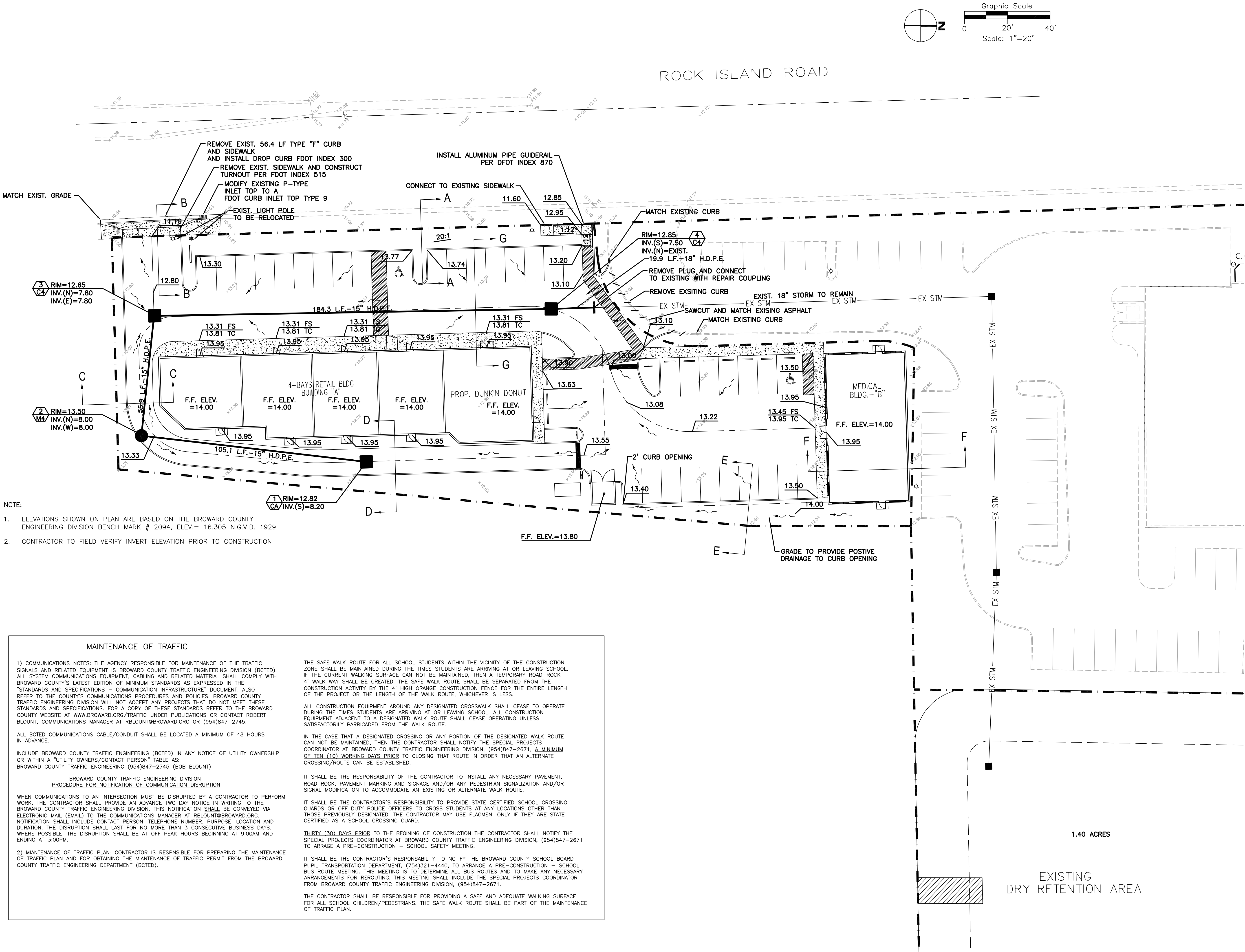
SHEET INDEX

COVER SHEET

CE1	PAVING GRADING AND DRAINAGE PLAN
CE2-CE3	WATER AND SEWER PLAN
CE4	SANITARY SEWER PROFILE
CE5-CE6	PAVING GRADING AND DRAINAGE DETAILS
CE7-CE8	WATER AND SEWER DETAILS
L1	LANDSCAPE PLAN
P1-P2	POLLUTION PREVENTION PLAN

ATLANTIC ENGINEERING SERVICES, INC.

200 C2 CROSSWINDS DRIVE
WEST PALM BEACH, FL 33413
PH:(561) 358-4140 FAX:(561) 966-9242
CA#00009390



- NOTE:
- ELEVATIONS SHOWN ON PLAN ARE BASED ON THE BROWARD COUNTY ENGINEERING DIVISION BENCH MARK # 2094, ELEV.= 16.305 N.G.V.D. 1929
 - CONTRACTOR TO FIELD VERIFY INVERT ELEVATION PRIOR TO CONSTRUCTION

MAINTENANCE OF TRAFFIC

1) COMMUNICATIONS NOTES: THE AGENCY RESPONSIBLE FOR MAINTENANCE OF THE TRAFFIC SIGNALS AND RELATED EQUIPMENT IS BROWARD COUNTY TRAFFIC ENGINEERING DIVISION (BCTED). ALL SYSTEM COMMUNICATIONS EQUIPMENT, CABLEING AND RELATED MATERIAL SHALL COMPLY WITH BROWARD COUNTY'S LATEST EDITION OF MINIMUM STANDARDS AS EXPRESSED IN THE "STANDARDS AND SPECIFICATIONS - COMMUNICATION INFRASTRUCTURE" DOCUMENT. ALSO REFER TO THE COUNTY'S COMMUNICATIONS PROCEDURES AND POLICIES. BROWARD COUNTY TRAFFIC ENGINEERING DIVISION WILL NOT ACCEPT ANY PROJECTS THAT DO NOT MEET THESE STANDARDS AND SPECIFICATIONS. FOR A COPY OF THESE STANDARDS REFER TO THE BROWARD COUNTY WEBSITE AT WWW.BROWARD.ORG/TRAFFIC UNDER PUBLICATIONS OR CONTACT ROBERT BLOUNT, COMMUNICATIONS MANAGER AT RBLOUNT@BROWARD.ORG OR (954)847-2745.

ALL BCTED COMMUNICATIONS CABLE/CONDUIT SHALL BE LOCATED A MINIMUM OF 48 HOURS IN ADVANCE.

INCLUDE BROWARD COUNTY TRAFFIC ENGINEERING (BCTED) IN ANY NOTICE OF UTILITY OWNERSHIP OR WITHIN A "UTILITY OWNERS/CONTACT PERSON" TABLE AS:

BROWARD COUNTY TRAFFIC ENGINEERING (954)847-2745 (BOB BLOUNT)

WHEN COMMUNICATIONS TO AN INTERSECTION MUST BE DISRUPTED BY A CONTRACTOR TO PERFORM WORK, THE CONTRACTOR SHALL PROVIDE AN ADVANCE TWO DAY NOTICE IN WRITING TO THE BROWARD COUNTY TRAFFIC ENGINEERING DIVISION. THIS NOTIFICATION SHALL BE CONVEYED VIA ELECTRONIC MAIL (EMAIL) TO THE COMMUNICATIONS MANAGER AT RBLOUNT@BROWARD.ORG. NOTIFICATION SHALL INCLUDE CONTACT PERSON, TELEPHONE NUMBER, PURPOSE, LOCATION AND DURATION. THE DISRUPTION SHALL LAST FOR NO MORE THAN 3 CONSECUTIVE BUSINESS DAYS. WHERE POSSIBLE, THE DISRUPTION SHALL BE AT OFF PEAK HOURS BEGINNING AT 9:00AM AND ENDING AT 3:00PM.

2) MAINTENANCE OF TRAFFIC PLAN: CONTRACTOR IS RESPONSIBLE FOR PREPARING THE MAINTENANCE OF TRAFFIC PLAN AND FOR OBTAINING THE MAINTENANCE OF TRAFFIC PERMIT FROM THE BROWARD COUNTY TRAFFIC ENGINEERING DEPARTMENT (BCTED).

THE SAFE WALK ROUTE FOR ALL SCHOOL STUDENTS WITHIN THE VICINITY OF THE CONSTRUCTION ZONE SHALL BE MAINTAINED DURING THE TIMES STUDENTS ARE ARRIVING AT OR LEAVING SCHOOL. IF THE CURRENT WALKING SURFACE CAN NOT BE MAINTAINED, THEN A TEMPORARY ROAD-ROCK 4' WALK WAY SHALL BE CREATED. THE SAFE WALK ROUTE SHALL BE SEPARATED FROM THE CONSTRUCTION ACTIVITY BY THE 4' HIGH ORANGE CONSTRUCTION FENCE FOR THE ENTIRE LENGTH OF THE PROJECT OR THE LENGTH OF THE WALK ROUTE, WHICHEVER IS LESS.

ALL CONSTRUCTION EQUIPMENT AROUND ANY DESIGNATED CROSSWALK SHALL CEASE TO OPERATE DURING THE TIMES STUDENTS ARE ARRIVING AT OR LEAVING SCHOOL. ALL CONSTRUCTION EQUIPMENT ADJACENT TO A DESIGNATED WALK ROUTE SHALL CEASE OPERATING UNLESS SATISFACTORILY BARRICADED FROM THE WALK ROUTE.

IN THE CASE THAT A DESIGNATED CROSSING OR ANY PORTION OF THE DESIGNATED WALK ROUTE CAN NOT BE MAINTAINED, THEN THE CONTRACTOR SHALL NOTIFY THE SPECIAL PROJECTS COORDINATOR AT BROWARD COUNTY TRAFFIC ENGINEERING DIVISION, (954)847-2671, A MINIMUM OF TEN (10) WORKING DAYS PRIOR TO CLOSING THAT ROUTE IN ORDER THAT AN ALTERNATE CROSSING/ROUTE CAN BE ESTABLISHED.

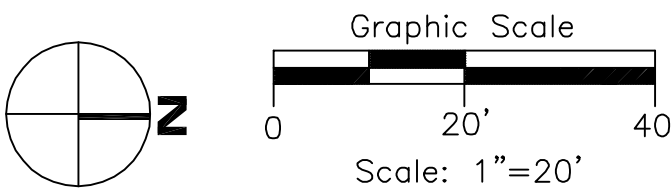
IT SHALL BE THE RESPONSABILITY OF THE CONTRACTOR TO INSTALL ANY NECESSARY PAVEMENT, ROAD ROCK, PAVEMENT MARKING AND SIGNAGE AND/OR ANY PEDESTRIAN SIGNALIZATION AND/OR SIGNAL MODIFICATION TO ACCOMMODATE AN EXISTING OR ALTERNATE WALK ROUTE.

IT SHALL BE THE CONTRACTOR'S RESPONSIBILITY TO PROVIDE STATE CERTIFIED SCHOOL CROSSING GUARDS OR OFF DUTY POLICE OFFICERS TO CROSS STUDENTS AT ANY LOCATIONS OTHER THAN THOSE PREVIOUSLY DESIGNATED. THE CONTRACTOR MAY USE FLAGMEN, ONLY IF THEY ARE STATE CERTIFIED AS A SCHOOL CROSSING GUARD.

THIRTY (30) DAYS PRIOR TO THE BEGINING OF CONSTRUCTION THE CONTRACTOR SHALL NOTIFY THE SPECIAL PROJECTS COORDINATOR AT BROWARD COUNTY TRAFFIC ENGINEERING DIVISION, (954)847-2671 TO ARRAGE A PRE-CONSTRUCTION - SCHOOL SAFETY MEETING.

IT SHALL BE THE CONTRACTOR'S RESPONSABILITY TO NOTIFY THE BROWARD COUNTY SCHOOL BOARD PUPIL TRANSPORTATION DEPARTMENT, (754)321-4440, TO ARRANGE A PRE-CONSTRUCTION - SCHOOL BUS ROUTE MEETING. THIS MEETING IS TO DETERMINE ALL BUS ROUTES AND TO MAKE ANY NECESSARY ARRANGEMENTS FOR REROUTING. THIS MEETING SHALL INCLUDE THE SPECIAL PROJECTS COORDINATOR FROM BROWARD COUNTY TRAFFIC ENGINEERING DIVISION, (954)847-2671.

THE CONTRACTOR SHALL BE RESPONSIBLE FOR PROVIDING A SAFE AND ADEQUATE WALKING SURFACE FOR ALL SCHOOL CHILDREN/PEDESTRIANS. THE SAFE WALK ROUTE SHALL BE PART OF THE MAINTENANCE OF TRAFFIC PLAN.



DATE	
DESCRIPTION	
REV.	1
	2
	3
	4
	5

IMTIAZ AHMED, P.E.
LICENSED ENGINEER NO. 46102
STATE OF FLORIDA

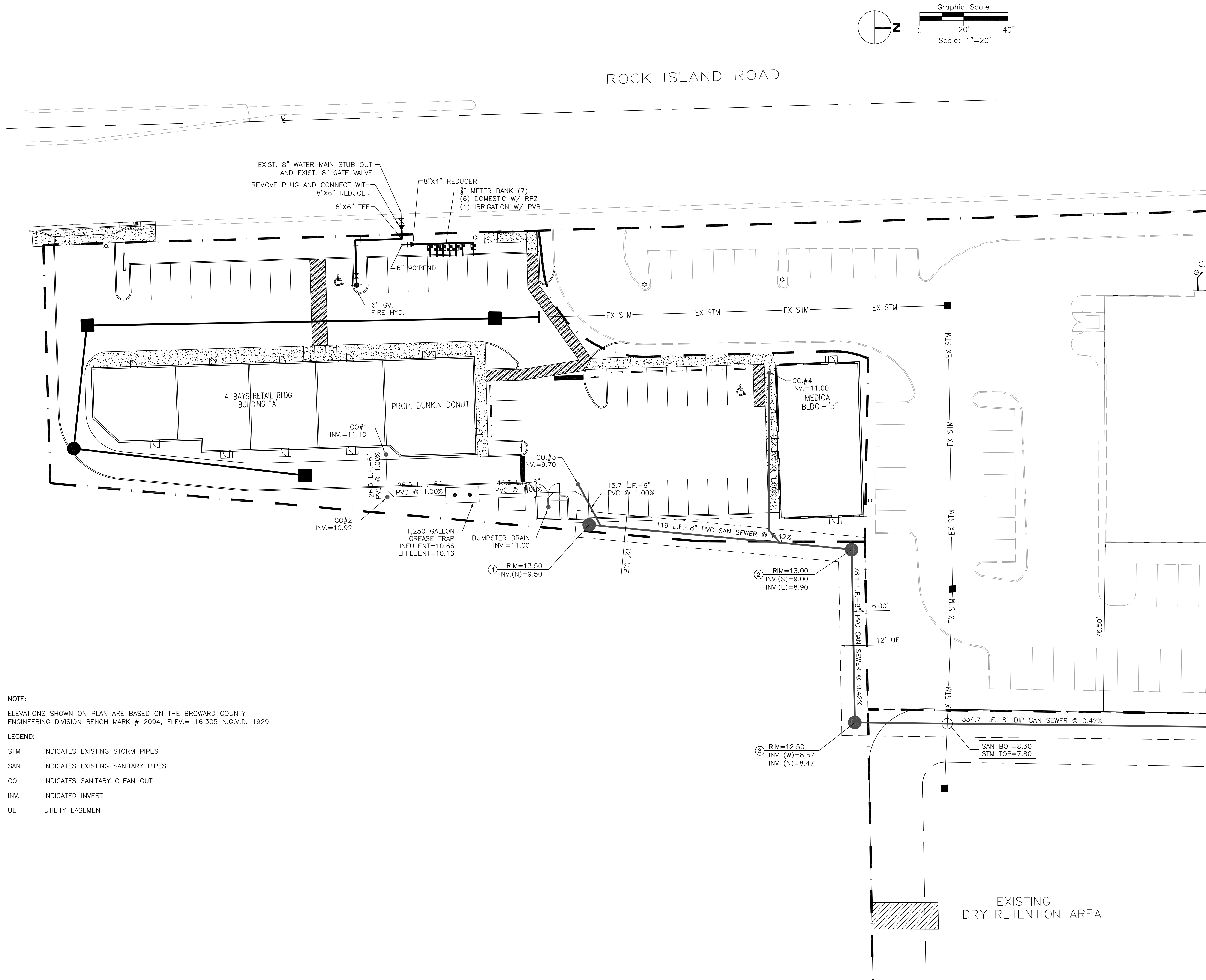
SEAL

ROCK ISLAND PLAZA
MARGATE
FLORIDA

ATLANTIC ENGINEERING SERVICES, INC.
200 C2 CROSSWINDS DRIVE
WEST PALM BEACH, FLORIDA 33413
PHONE - (561) 358-4140
FAX - (561) 966-9242
CERTIFICATE OF AUTHORIZATION NO.: 9390

SCALE: AS SHOWN

DDT	DES.	DWN.	CHK.
SHEET NUMBER			
CE1			
DATE DRAWN			
05/01/09			



NOTE:
ELEVATIONS SHOWN ON PLAN ARE BASED ON THE BROWARD COUNTY
ENGINEERING DIVISION BENCH MARK # 2094, ELEV.= 16.305 N.G.V.D. 1929

LEGEND:

STM	INDICATES EXISTING STORM PIPES
SAN	INDICATES EXISTING SANITARY PIPES
CO	INDICATES SANITARY CLEAN OUT
INV.	INDICATED INVERT
UE	UTILITY EASEMENT

MATCHLINE SEE SHEET CE3

WATER AND SEWER PLAN

ROCK ISLAND PLAZA
MARGATE
FLORIDA

ATLANTIC ENGINEERING SERVICES, INC.
200 C2 CROSSWINDS DRIVE
WEST PALM BEACH, FLORIDA 33413
PHONE - (561) 358-4140
FAX - (561) 966-9242
CERTIFICATE OF AUTHORIZATION NO.: 9390

SCALE: AS SHOWN

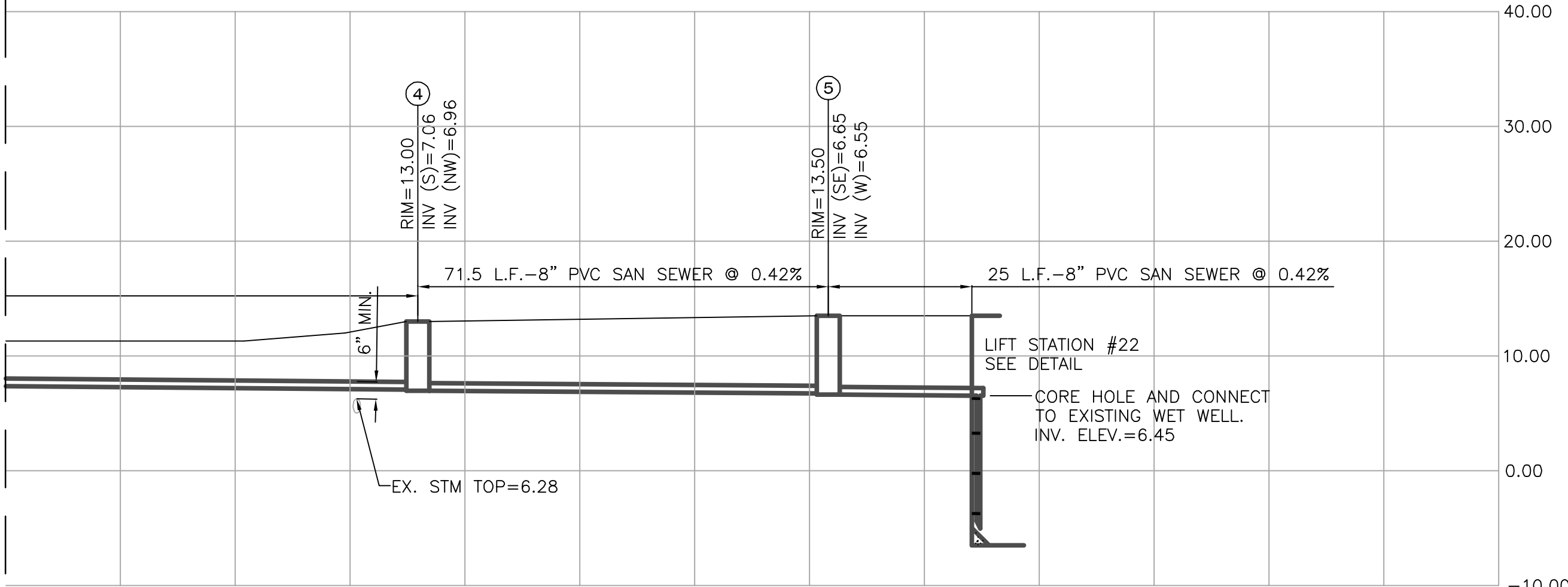
DES.	DWN.	CHK.
SHEET NUMBER		
CE2		
DATE DRAWN		
05/01/09		

REV.	DESCRIPTION	DATE
1		
2		
3		
4		
5		

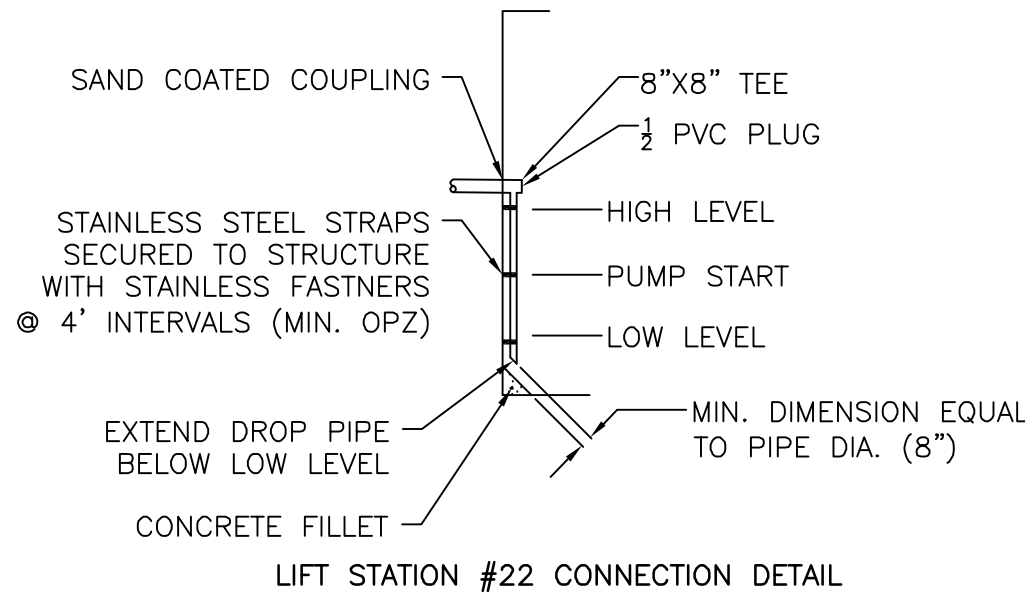
IMTIAZ AHMED, P.E.
LICENSED ENGINEER NO. 46102
STATE OF FLORIDA

SEAL

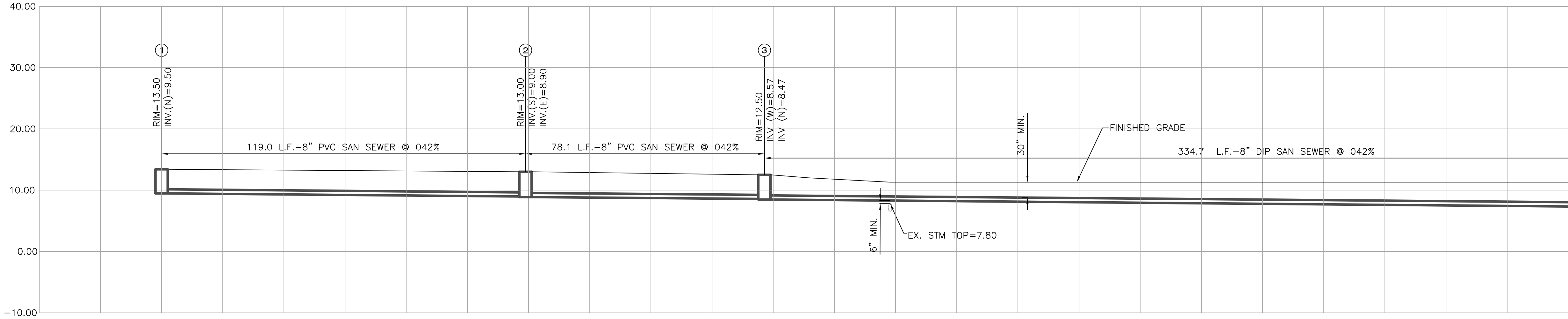
MATCHLINE SEE SHEET ABOVE



SCALE: 1"=20' HORZ
1"=10' VERT



- STAINLESS ADJUSTABLE PIPE BRACKET NOTES:
- SUPPORT PIPE FULLY
 - NON-CORROSIVE - 304 STAINLESS STEEL
 - DORABLE 1 1/2" WIDE 11 GAUGE BANDS
3/8" DIA. 18-8 HARDWARE



MATCHLINE SEE SHEET BELOW

SANITARY SEWER PROFILE

ROCK ISLAND PLAZA
MARGATE
FLORIDA

ATLANTIC ENGINEERING SERVICES, INC.
200 C2 CROSSWINDS DRIVE
WEST PALM BEACH, FLORIDA 33413
PHONE - (561) 358-4140
FAX - (561) 966-9242
CERTIFICATE OF AUTHORIZATION NO.: 9390

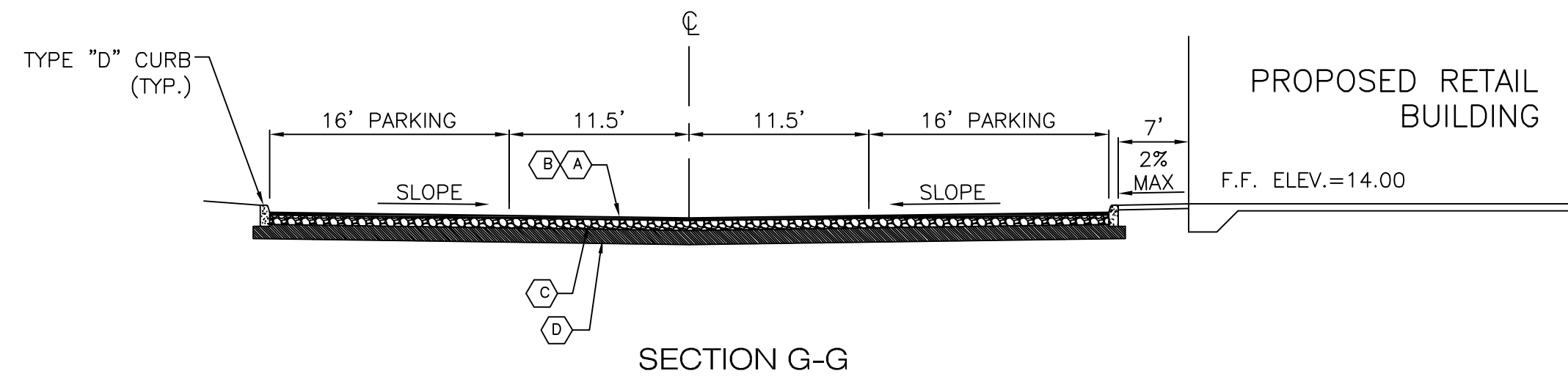
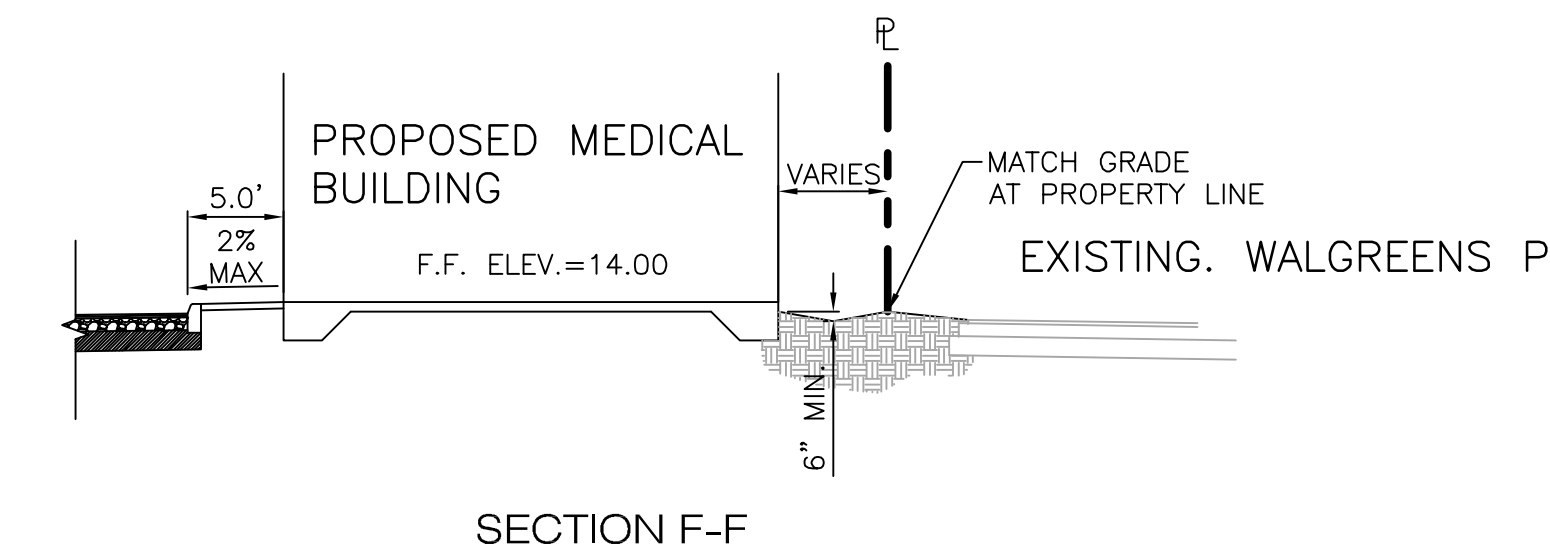
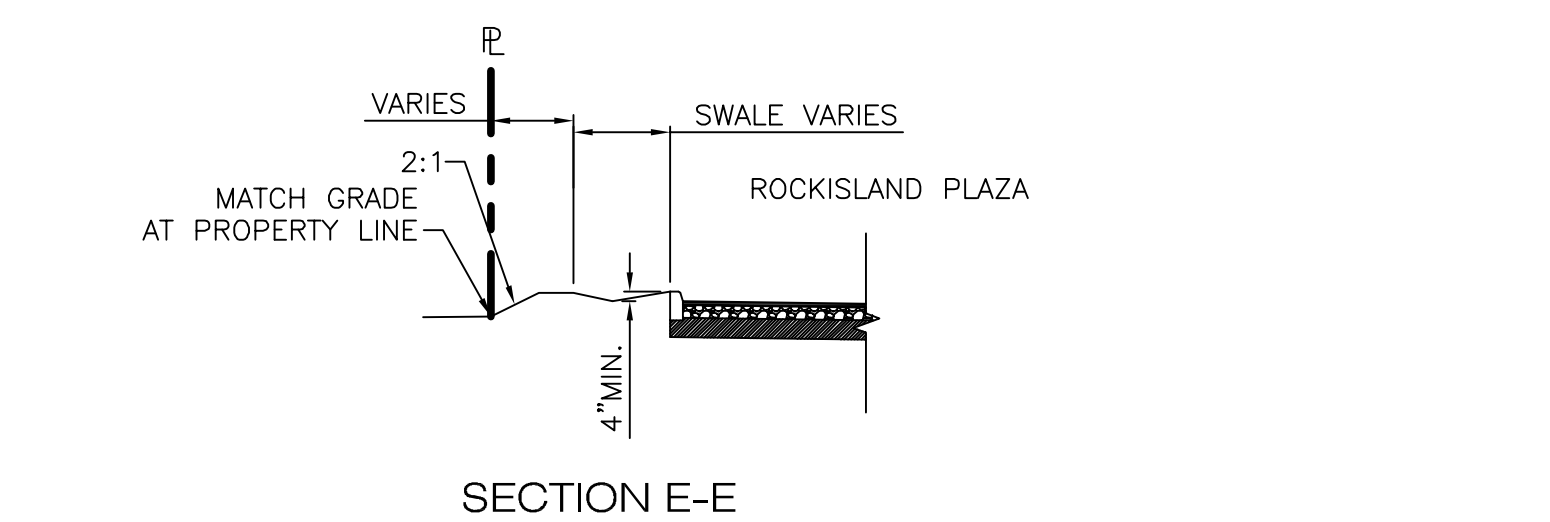
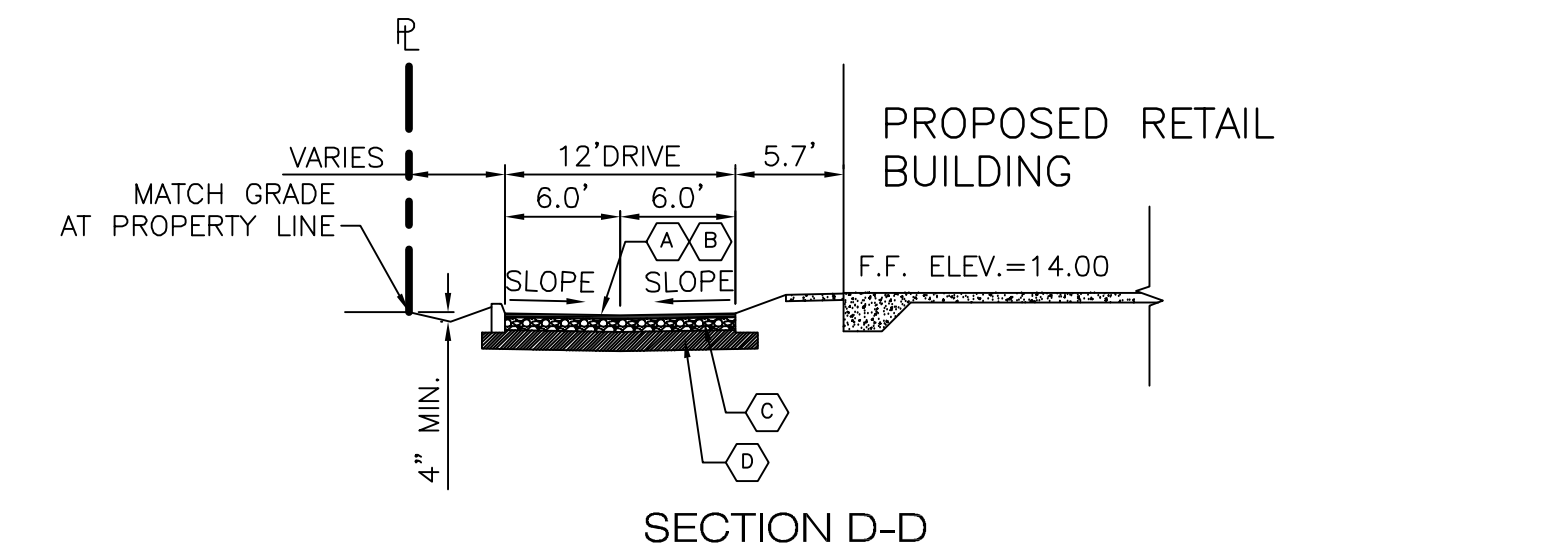
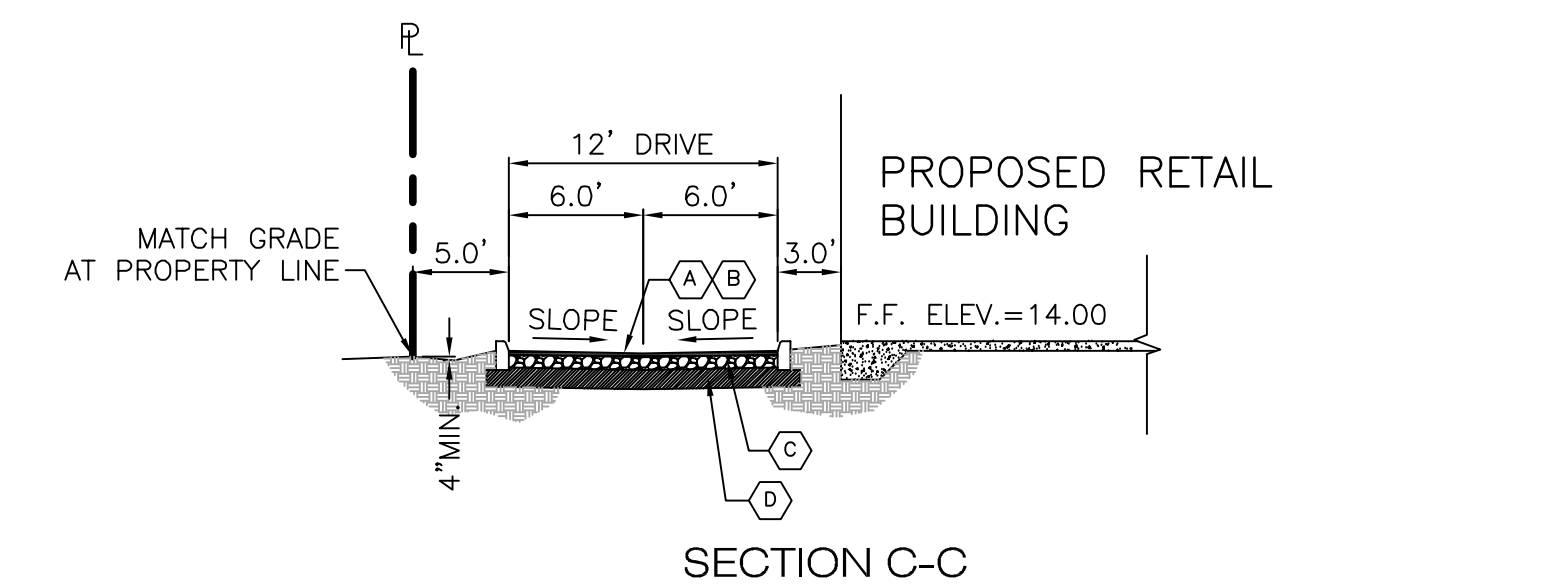
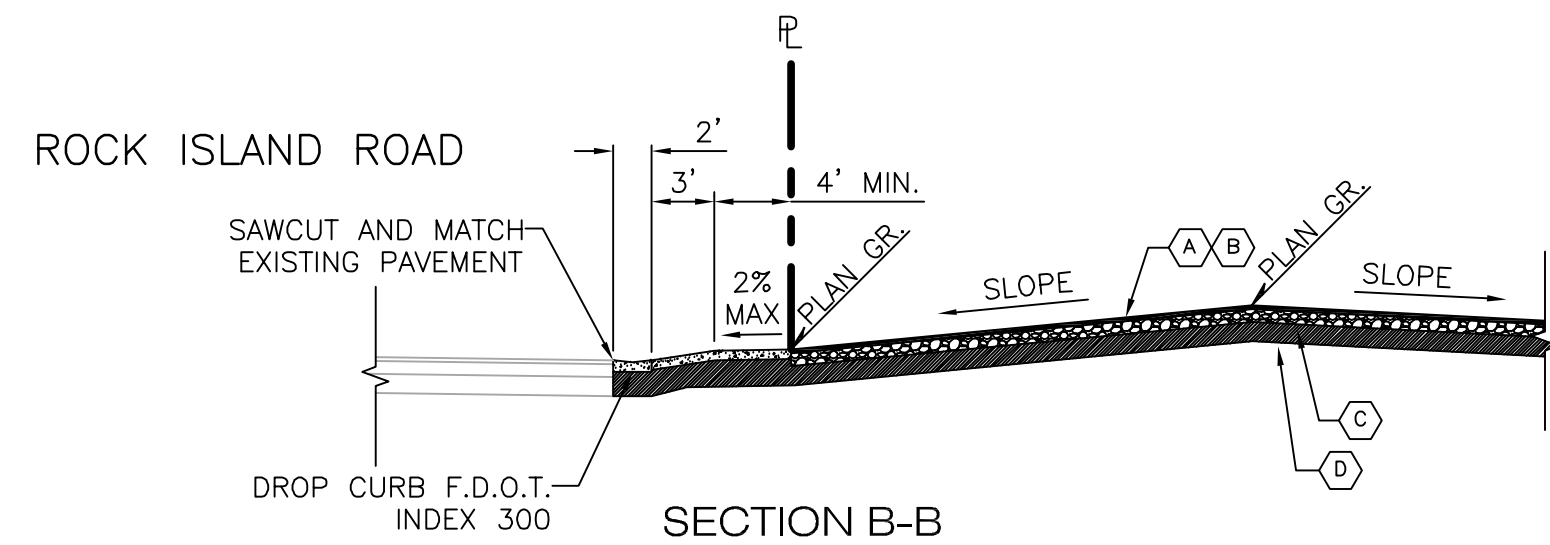
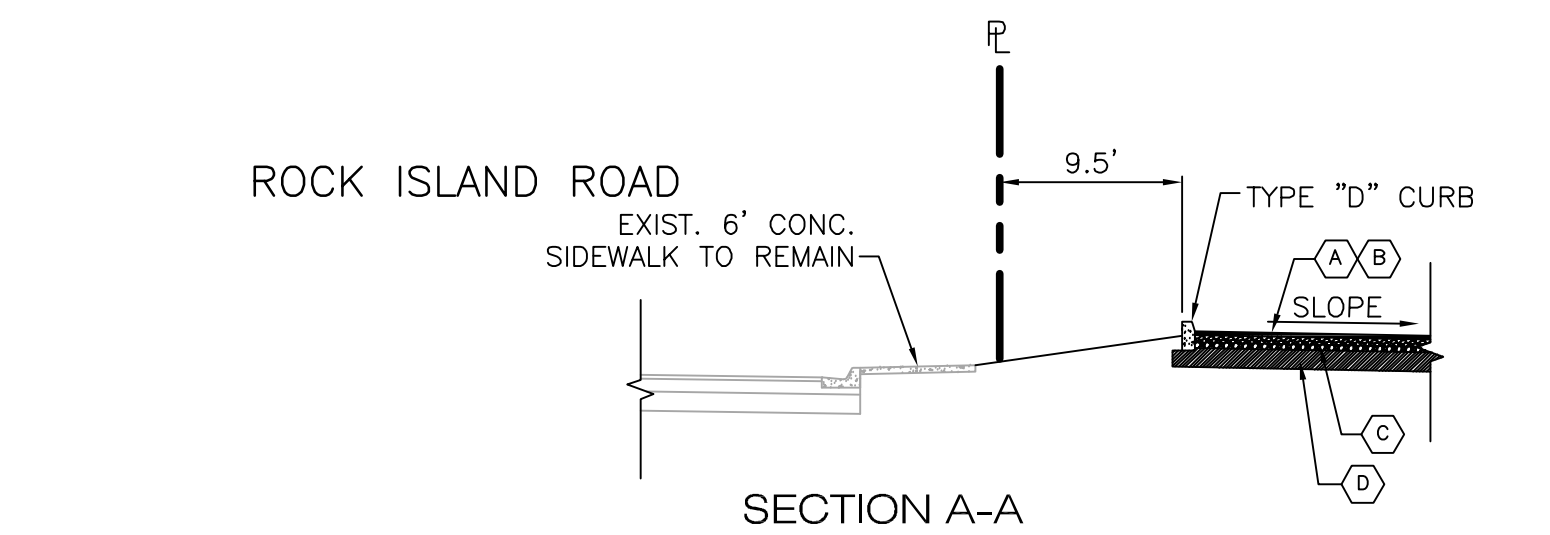
SCALE: AS SHOWN

DES.	DDT	CHK.
SHEET NUMBER		
CE4		
DATE DRAWN 05/01/09		

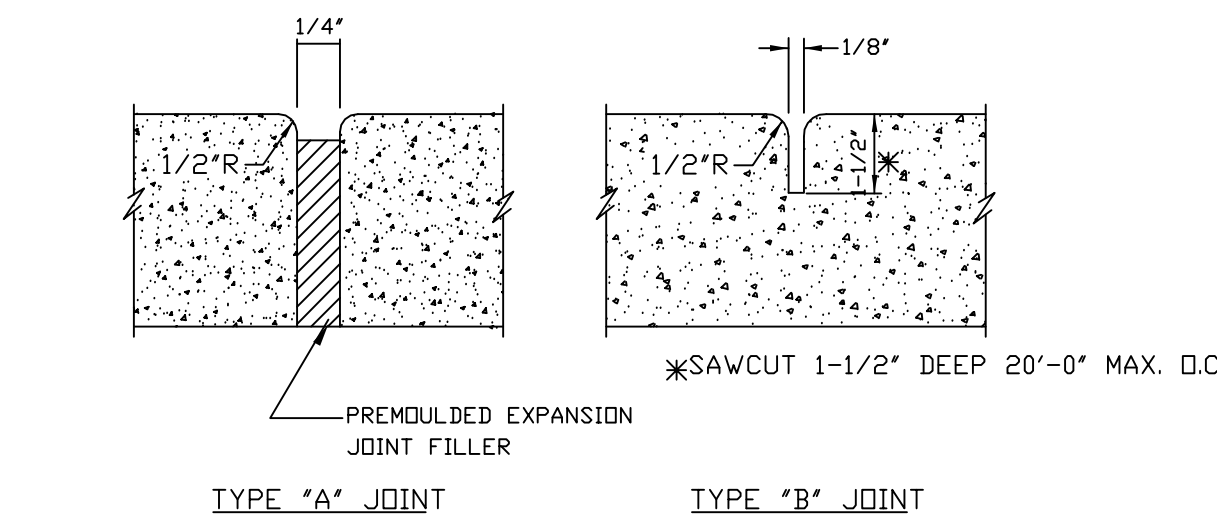
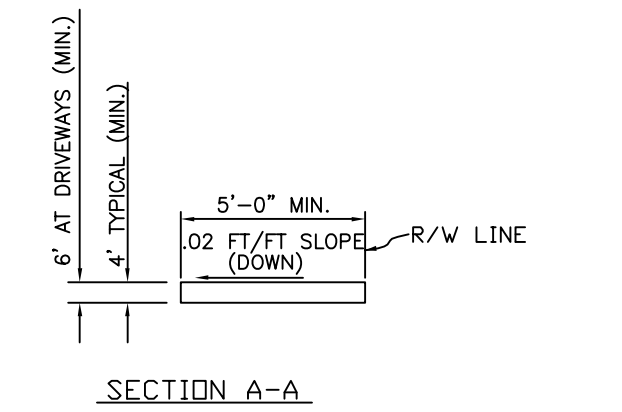
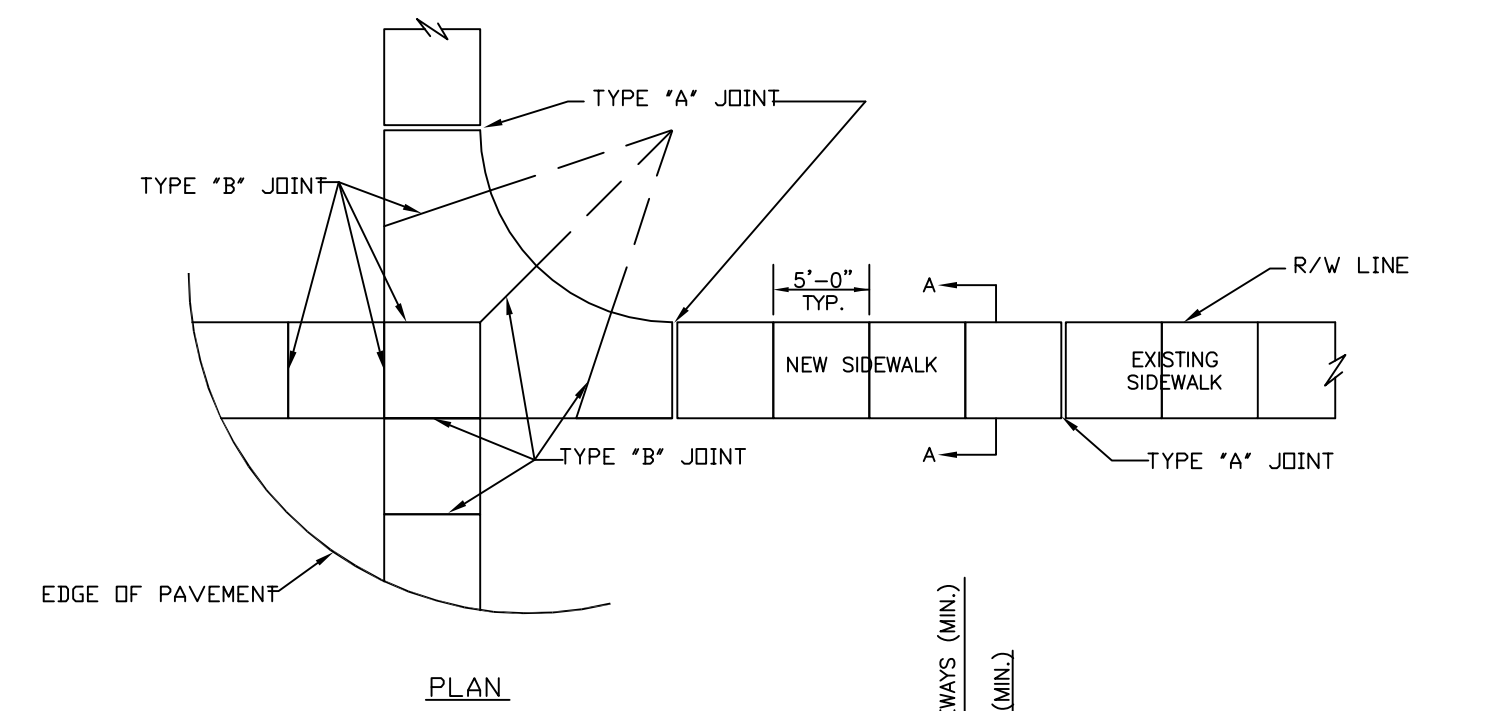
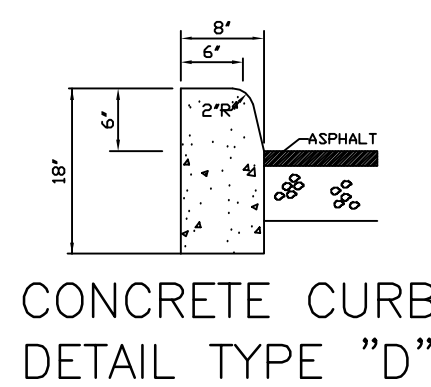
IMTIAZ AHMED, P.E.
LICENSED ENGINEER NO. 46102
STATE OF FLORIDA

SEAL

REV.	DESCRIPTION	DATE
1		
2		
3		
4		
5		



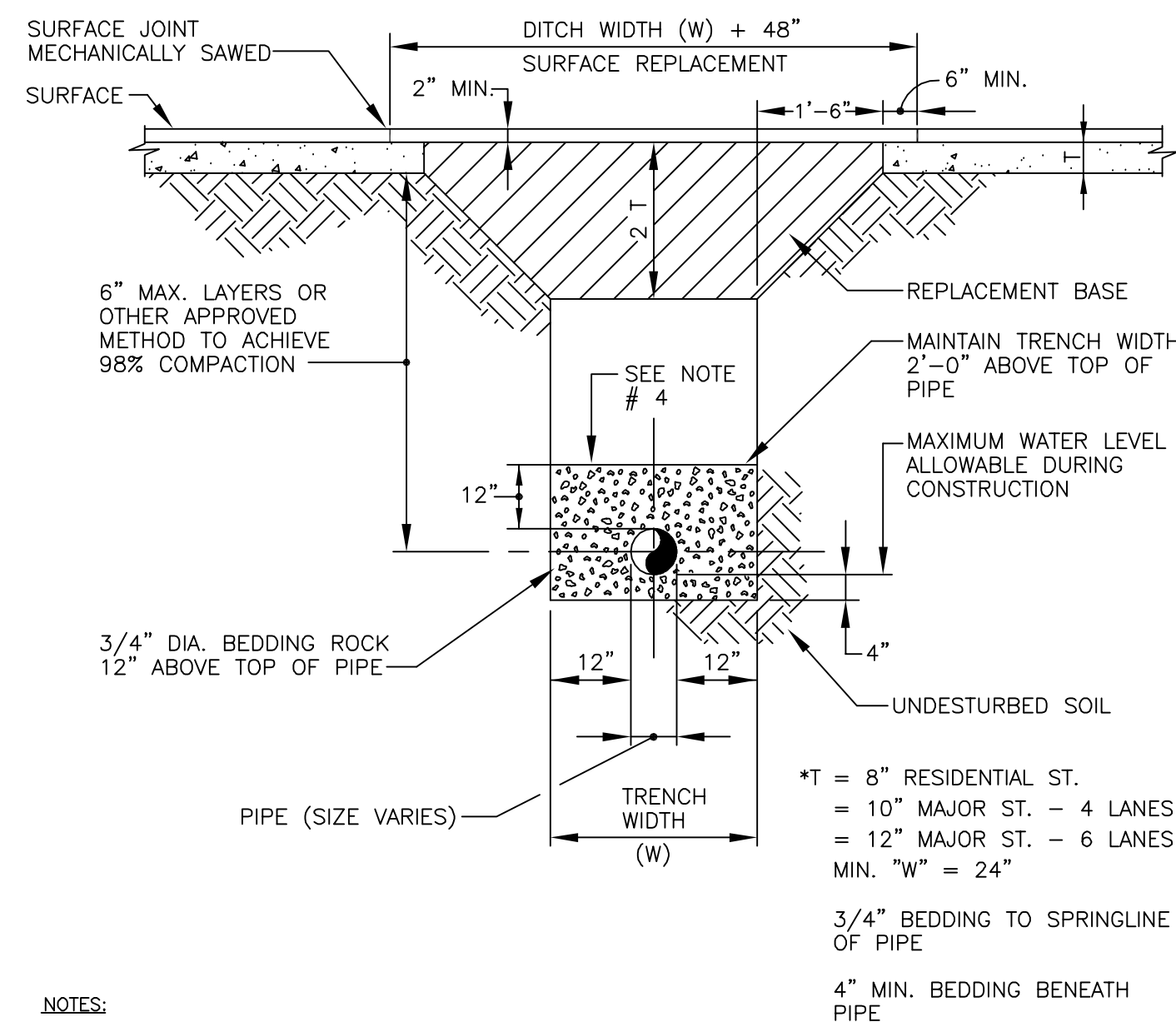
- Ⓐ 12" TYPE SIII ASPHALTIC CONCRETE
- Ⓑ PRIME AND TACK COAT
- Ⓒ 8" LIMEROCK BASE COMPACTED TO 98% MAX DENSITY AASHTO T-180.(ON SECTION A-A)
- Ⓓ 12" SUBGRADE COMPACTED TO 98% MAX DENSITY AASHTO T-180, STABILIZED TO LBR 40



TYPE	LOCATION
"A"	P.C. AND P.T. OF CURVES
"B"	5 FEET CENTER TO CENTER ON SIDEWALKS.

NOTE:
1. CONCRETE TO BE CLASS-1, 3000 P.S.I.
2. THE USE OF REINFORCEMENT CEMENT WILL NOT BE PERMITTED.
3. SIDEWALK SLOPES SHALL MEET THE REQUIREMENTS OF THE "AMERICAN WITH DISABILITIES ACT"

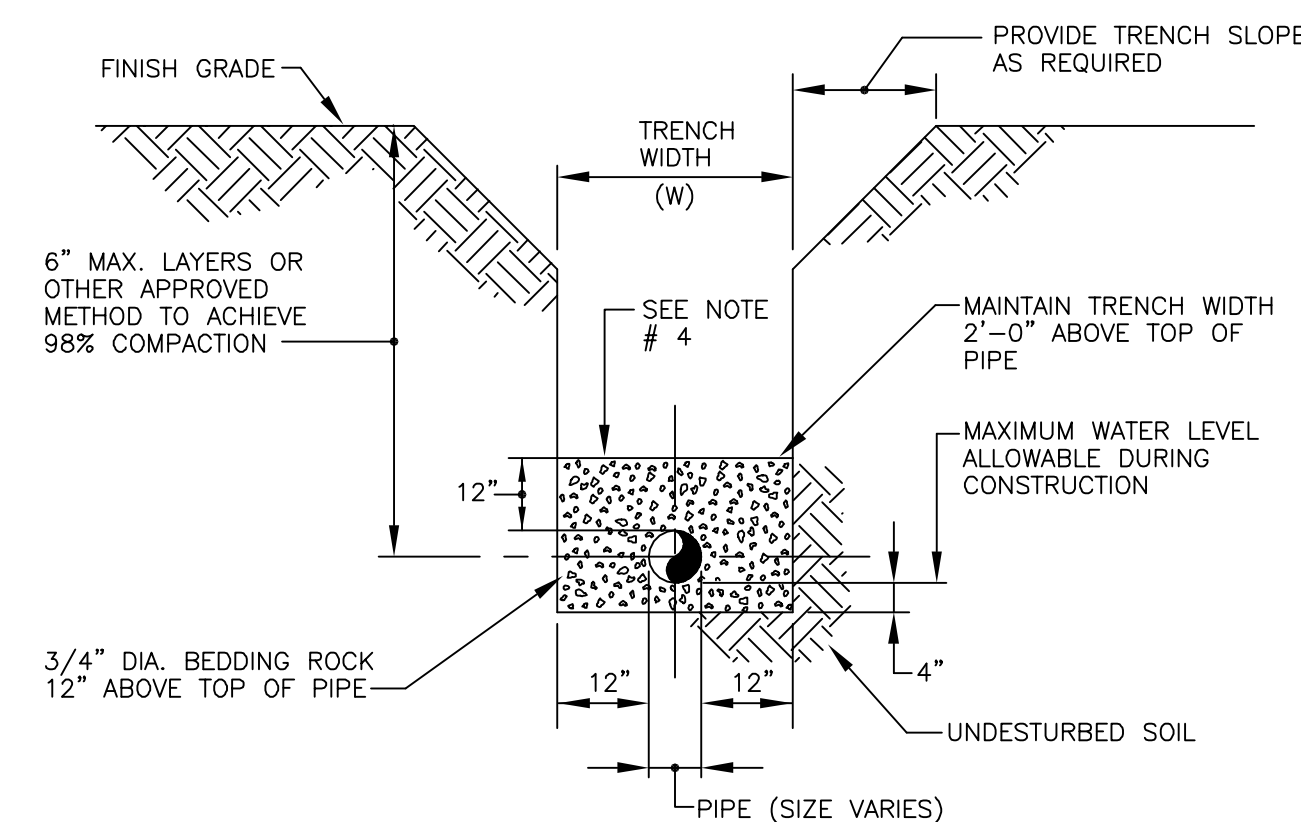
TYPICAL SIDEWALK DETAIL



- NOTES:
1. REPLACED BASE MATERIAL OVER DITCH SHALL BE TWICE THE THICKNESS OF THE ORIGINAL BASE, BUT NO LESS THAN "T" SCHEDULE.
 2. BASE MATERIAL SHALL BE PLACED IN TWO OR THREE LAYERS AND EACH LAYER THOROUGHLY ROLLED AND TAMPED TO MAXIMUM DENSITY (98%).
 3. ASPHALT CONCRETE PAVEMENT JOINTS SHALL BE MECHANICALLY SAWED.
 4. MECHANICAL COMPACTION IS NOT ALLOWED BELOW THIS LEVEL.
 5. NEW SURFACE MATERIALS WILL BE CONSISTANT WITH THE EXISTING SURFACE, AND SHALL HAVE LAPPED AND FEATHERED JOINTS.
 6. PERMIT REQUIRED FROM ENGINEERING TO CUT PAVEMENT.
 7. IF DITCH IS FILLED TEMPORARILY IT SHALL BE COVERED WITH A 2" ASPHALTIC CONC. PATCH UNTIL REPLACED WITH A PERMANENT PATCH.

TRENCH DETAIL (PAVED AREAS)

TRENCH DETAIL



- NOTES:
1. WHERE SOIL CONDITIONS CAN NOT BE MAINTAINED AS SHOWN ABOVE, PROVIDE APPROVED METHOD OF CONSTRUCTION.
 2. SHEETING WILL BE REQUIRED AS DETERMINED IN THE FIELD.
 3. COMPACTION PERCENTAGES SHOWN REFER TO ASSHO T-180.
 4. MECHANICAL COMPACTION NOT ALLOWED BELOW THIS LEVEL.

TRENCH DETAIL (UNPAVED AREAS)

DATE	DESCRIPTION	REV.
		1
		2
		3
		4
		5

IMTIAZ AHMED, P.E.
LICENSED ENGINEER NO. 46102
STATE OF FLORIDA

SEAL

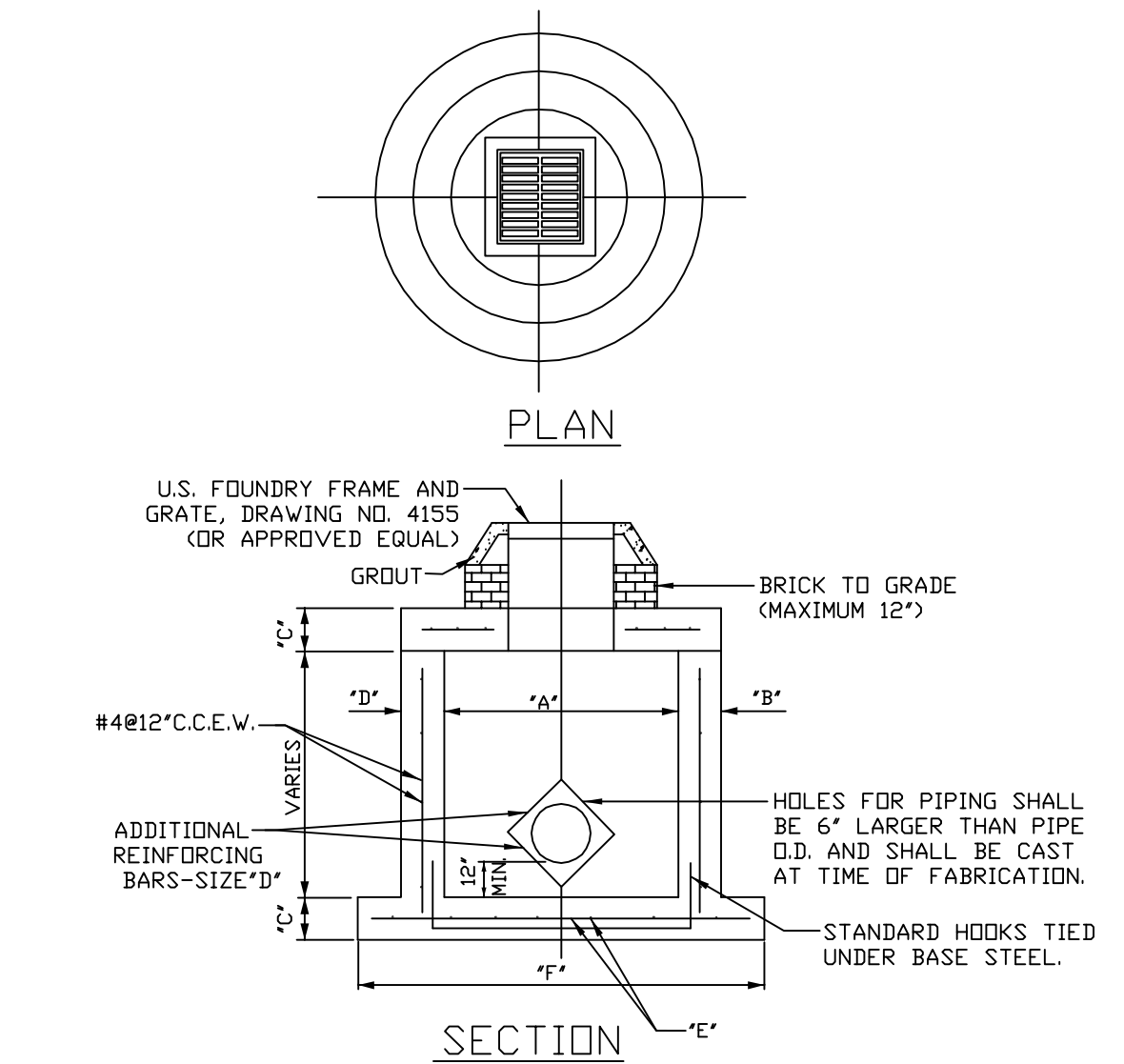
ROCK ISLAND PLAZA
MARGATE
FLORIDA

ATLANTIC ENGINEERING SERVICES, INC.
200 C2 CROSSWINDS DRIVE
WEST PALM BEACH, FLORIDA 33413
PHONE - (561) 358-4140
FAX - (561) 966-9242
CERTIFICATE OF AUTHORIZATION NO.: 9390

DDT	DWN.	CHK.
SHEET NUMBER		
CE5		
DATE DRAWN 05/01/09		

PAVING, GRADING AND DRAINAGE DETAIL

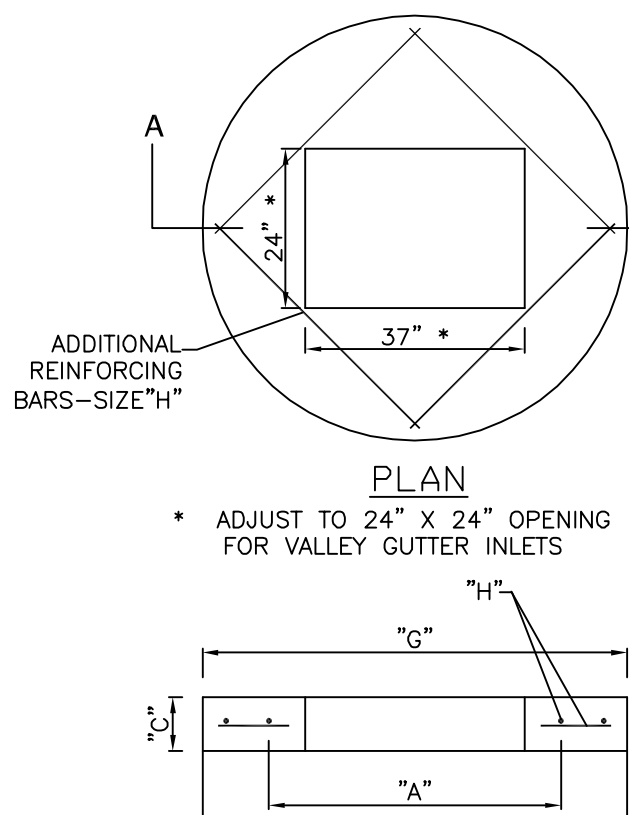
SCALE: AS SHOWN



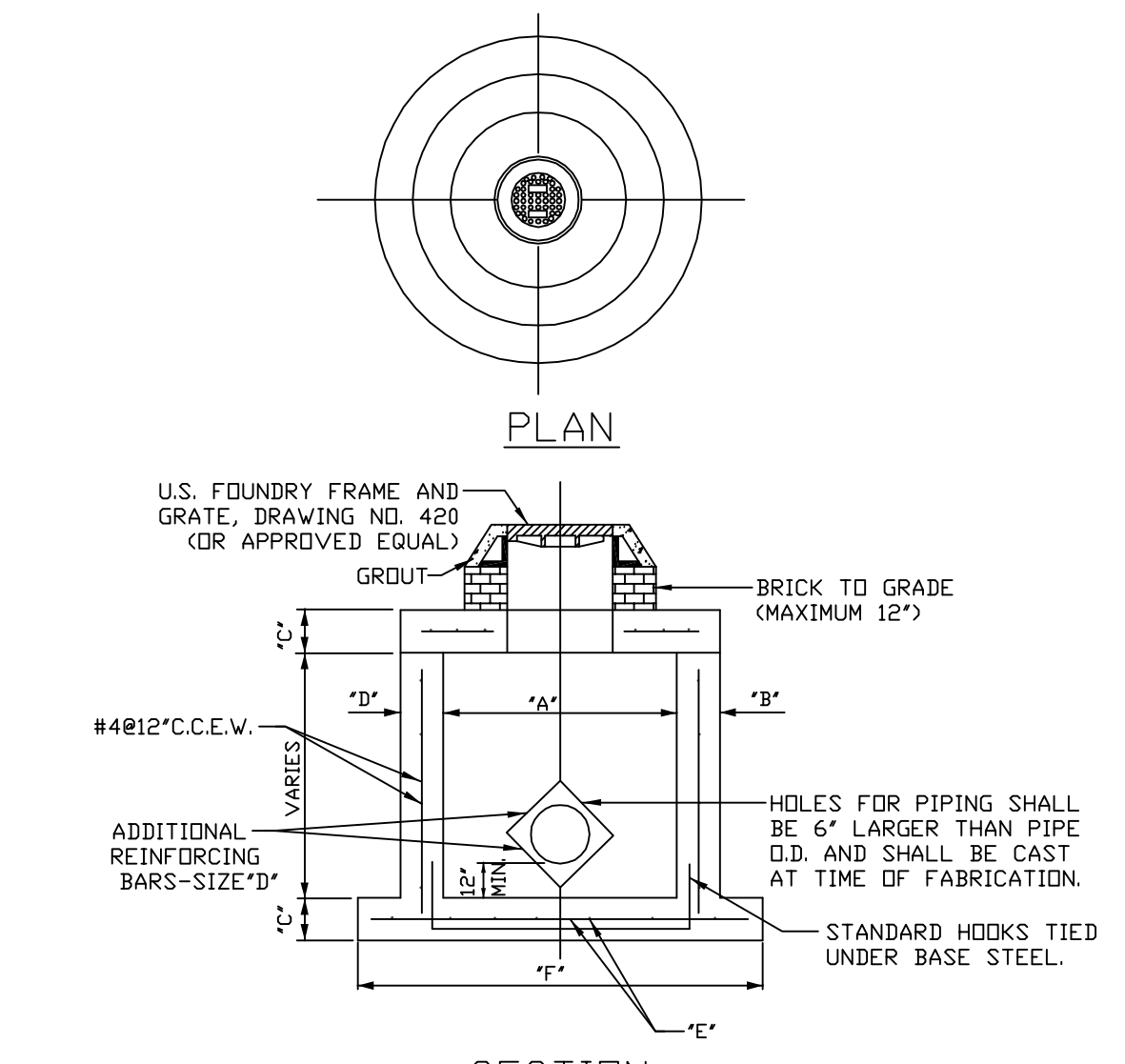
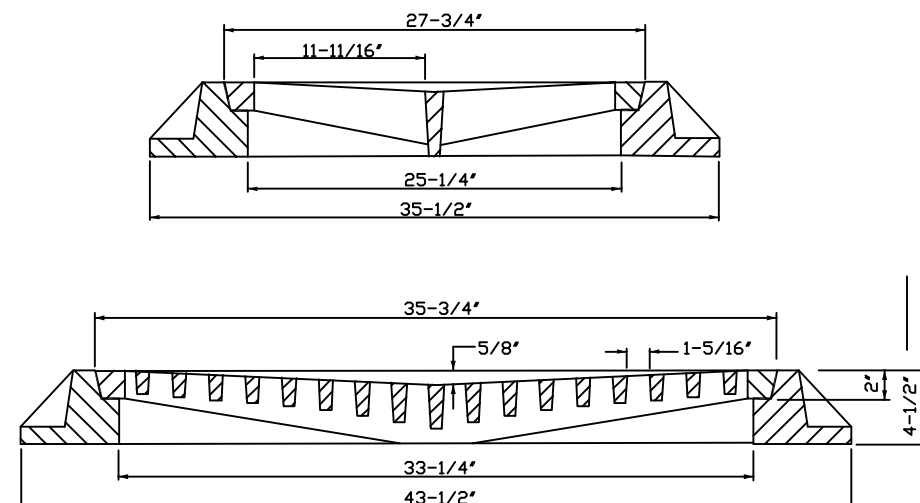
NOTE: SQUARE STRUCTURES MAY BE USED AS AN ALTERNATE EXCEPT FOR CURB INLETS UNLESS STRUCTURE CONTAINS A POLLUTION RETARDENT BAFFLE. SQUARE STRUCTURES MUST BE USED FOR POLLUTION RETARDENT STRUCTURES.

TYPE	"A"	"B"	"C"	"D"	"E"	"F"
C-4	4'-0"	8"	8"	#4@12"CCEW	#4@12"CCEW	6'-4" Ø
C-5	5'-0"	8"	8"	#5@12"CCEW	#5@12"CCEW	7'-4" Ø
C-6	6'-0"	8"	8"	#5@12"CCEW	#5@6"CCEW	8'-4" Ø
C-7	7'-0"	8"	8"	#5@12"CCEW	#5@6"CCEW	9'-4" Ø
C-8	8'-0"	10"	10"	2-W.W.M. W/#4 @ 12" C.C. VERT.	#5@6"CCEW	10'-4" Ø

PRECAST CIRCULAR CATCH BASIN
N.T.S.



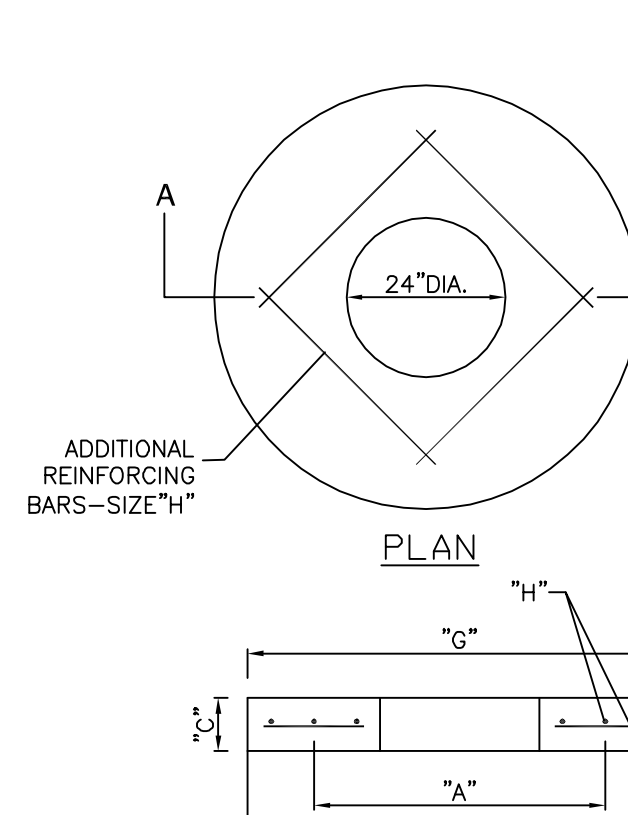
PRECAST CONCRETE - TOP SLAB FOR
CATCH BASIN



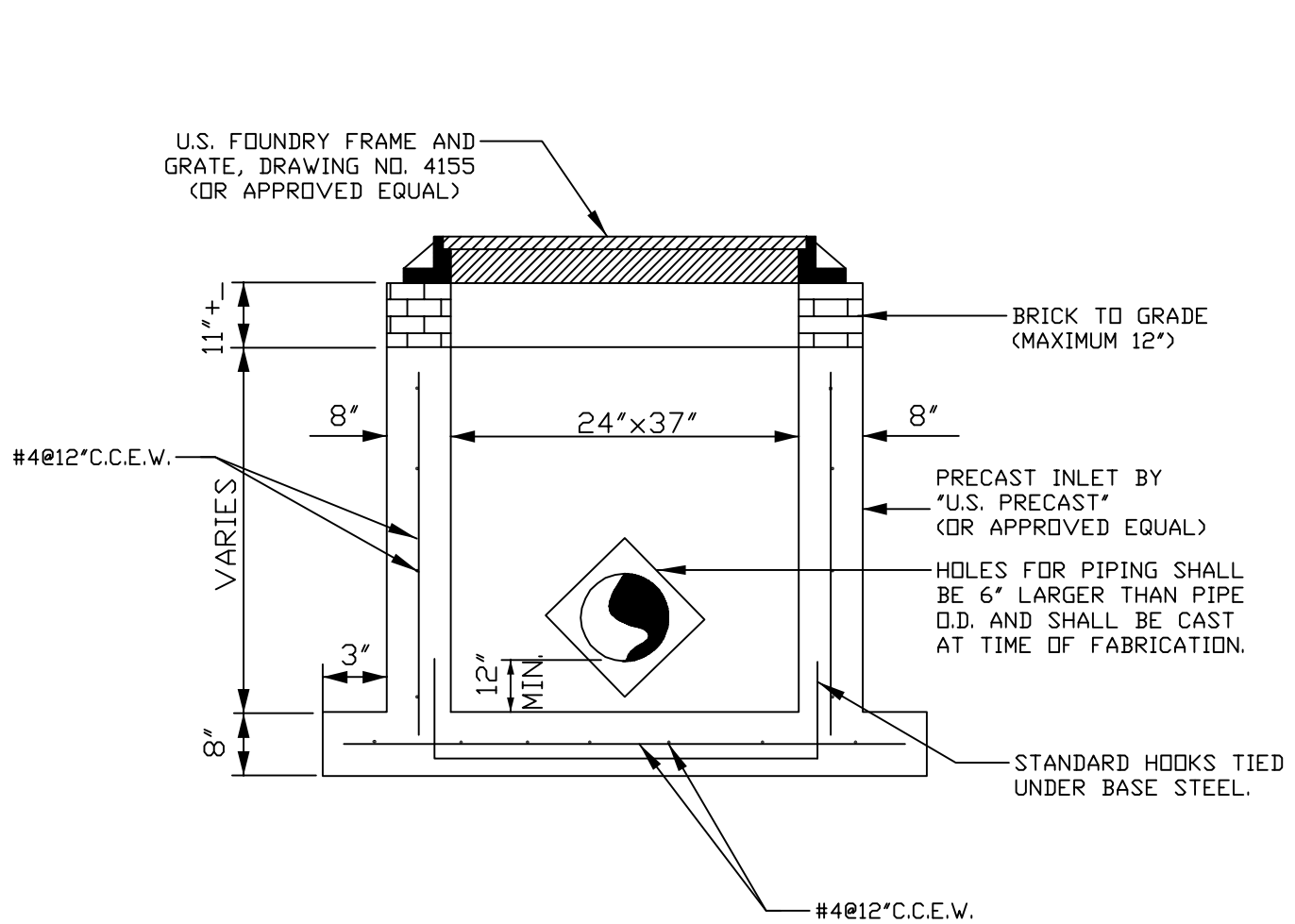
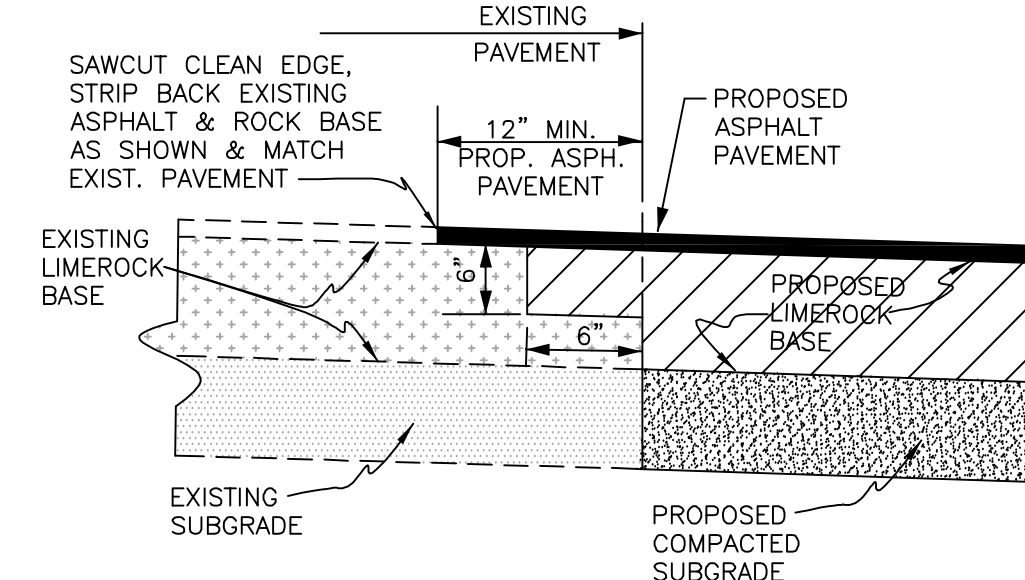
NOTE: SQUARE STRUCTURES MAY BE USED AS AN ALTERNATE EXCEPT FOR CURB INLETS UNLESS STRUCTURE CONTAINS A POLLUTION RETARDENT BAFFLE. SQUARE STRUCTURES MUST BE USED FOR POLLUTION RETARDENT STRUCTURES.

TYPE	"A"	"B"	"C"	"D"	"E"	"F"
M-4	4'-0"	8"	8"	#4@12"CCEW	#4@12"CCEW	6'-4" Ø
M-5	5'-0"	8"	8"	#5@12"CCEW	#5@12"CCEW	7'-4" Ø
M-6	6'-0"	8"	8"	#5@12"CCEW	#5@6"CCEW	8'-4" Ø
M-7	7'-0"	8"	8"	#5@12"CCEW	#5@6"CCEW	9'-4" Ø
M-8	8'-0"	10"	10"	2-W.W.M. W/#4 @ 12" C.C. VERT.	#5@6"CCEW	10'-8" Ø

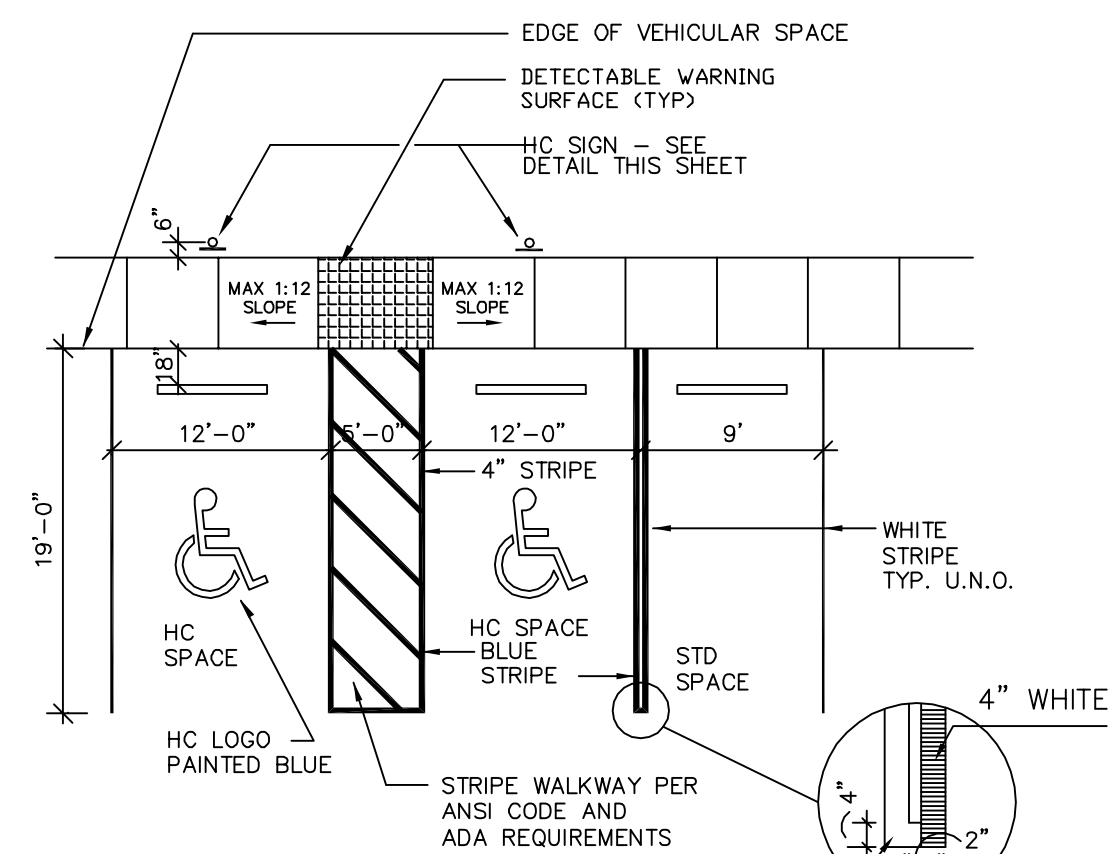
PRECAST DRAINAGE MANHOLE
N.T.S.



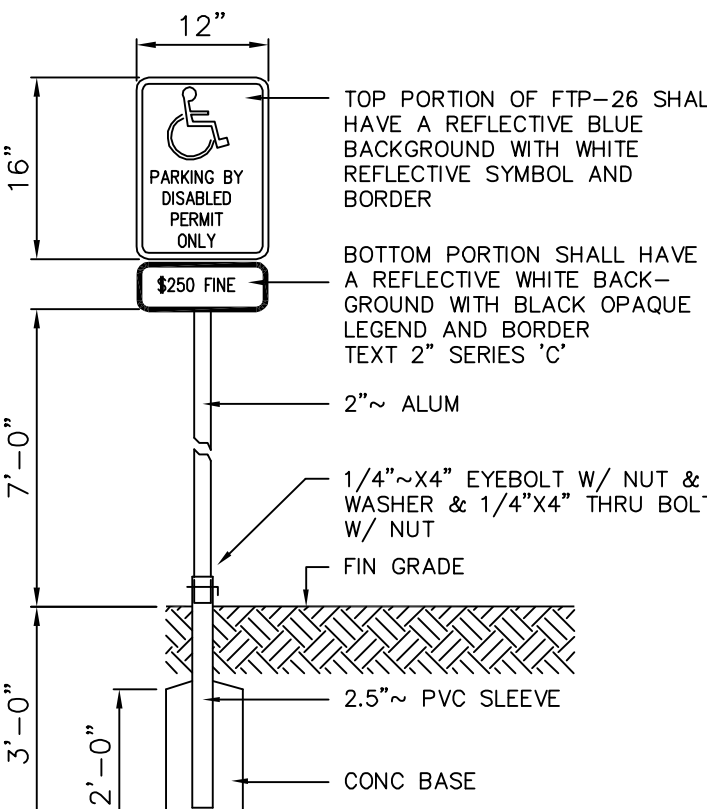
PRECAST CONCRETE TOP SLAB
FOR MANHOLE



TYPE "C-A" DITCH BOTTOM INLET



PARKING DETAIL



HANDICAP SIGN DETAIL

ON-SITE PAVING AND DRAINAGE SPECIFICATIONS:

- ALL ORGANIC OR DELETERIOUS MATERIAL SHALL BE REMOVED FROM WITHIN 5 FEET OF ANY EDGE OF PAVEMENT. ANY SUCH MATERIAL SHALL BE REPLACED BY APPROVED GRANULAR FILL WHICH SHALL BE PLACED AND IN ACCORDANCE WITH THE GEOTECHNICAL ENGINEERING REPORT FOR THE SITE.
- STABILIZED SUBGRADE SHALL HAVE A LIMEROCK BEARING RATIO (LBR) OF 40 AND SHALL BE COMPACTED TO 98% OF MAXIMUM DENSITY AS DETERMINED BY AASHTO T-180.
- LIMEROCK BASE COURSE SHALL CONFORM TO THE REQUIREMENTS OF SECTION 311 OF FLORIDA D.O.T. STANDARD SPECIFICATIONS. THE MINIMUM PERCENTAGE OF CARBONATES OF CALCIUM AND MAGNESIUM SHALL BE 70% LIQUID LIMIT 35 PLASTICITY 6, MIN LBR 100 OR ACCEPTABLE FDOT PRODUCT APPROVAL.
- ASPHALTIC CONCRETE TYPE S-3 SHALL CONFORM TO THE REQUIREMENTS OF SECTION 331 OF FLORIDA D.O.T. STANDARD SPECIFICATIONS.
- PRIME COAT AND TACK COAT FOR BASE COURSES SHALL CONFORM TO THE REQUIREMENTS OF SECTIONS 300-1 THROUGH 300-7 OF FLORIDA D.O.T. STANDARD SPECIFICATIONS. PRIME COAT SHALL BE APPLIED AT A RATE OF 0.25 GALLONS PER SQUARE YARD AND TACK COAT AT A RATE OF 0.08 GALLONS PER SQUARE YARD UNLESS A VARIATION RATE IS APPROVED BY THE ENGINEER.
- ALL CONCRETE SHALL HAVE A MINIMUM COMPRESSIVE STRENGTH OF 3000 PSI AT 28 DAYS, EXCEPT DRAINAGE STRUCTURES.
- PRECAST CONCRETE MANHOLES AND CATCH BASINS SHALL MEET THE REQUIREMENTS OF A.S.T.M. SPECIFICATIONS C-478 AND 641.
- CONCRETE FOR PRECAST MANHOLES AND CATCH BASINS SHALL HAVE MINIMUM COMPRESSIVE STRENGTH OF 4000 PSI AT 28 DAYS.
- REINFORCING STEEL FOR MANHOLES AND CATCH BASINS SHALL CONFORM TO A.S.T.M. SPECIFICATIONS A-615 AND A-305, LATEST REVISION. GRADE 60 STEEL SHALL BE USED FOR TOP AND BOTTOM SLABS.
- ALL RE-BAR SPLICES IN CONCRETE STRUCTURES SHALL HAVE A MINIMUM LAP OF 24 BAR DIAMETERS.
- ALL JOINTS IN CONCRETE STRUCTURES SHALL BE FINISHED WATER TIGHT.
- ALL SPACES AROUND PIPING ENTERING OR LEAVING MANHOLES AND CATCH BASINS SHALL BE COMPLETELY FILLED WITH 2:1 WATERPROOF, NON-SHRINKING CEMENT MORTAR.
- REINFORCED CONCRETE PIPE (RCP) SHALL CONFORM TO THE REQUIREMENTS OF A.S.T.M. SPECIFICATION C-76, FOR CLASS III, WALL THICKNESS "B" REINFORCED CONCRETE PIPE, AND AS MODIFIED IN SECTION 941 OF FLORIDA D.O.T. STANDARD SPECIFICATION.
- CORRUGATED METAL PIPE SHALL CONFORM TO THE REQUIREMENTS OF SECTION 945 OF FLORIDA D.O.T. STANDARD SPECIFICATIONS.
- PVC DRAINAGE PIPE SHALL CONFORM TO THE REQUIREMENTS OF SECTION 945 OF FLORIDA D.O.T. STANDARD SPECIFICATIONS.
- HDPE PIPE SHALL BE ADS N-12 OR APPROVED EQUAL.
- ALL LABOR, MATERIALS AND METHODS OF CONSTRUCTION SHALL BE IN STRICT ACCORDANCE WITH THE MINIMUM ENGINEERING AND CONSTRUCTION STANDARDS ADOPTED BY CITY OF MARGATE AND THE PLANS AND CONSTRUCTION SPECIFICATIONS. WHERE CONFLICTS OR OMISSIONS EXIST, THE CITY OF MARGATE STANDARDS SHALL DICTATE. SUBSTITUTIONS AND DEVIATIONS FROM PLANS AND SPECIFICATIONS SHALL BE PERMITTED ONLY WHEN WRITTEN APPROVAL HAS BEEN ISSUED BY THE ENGINEER.
- THE EXISTING ELEVATIONS SHOWN ON THE GRADING PLAN INDICATES THE ELEVATION AT THE POINT DEPICTED ONLY, AND SHOULD NOT BE INTERPRETED AS INDICATING THE ELEVATIONS OF ANY OTHER POINT. THESE EXISTING ELEVATIONS ARE IN NO WAY AN INDICATOR OF SURFACE OR SUBSURFACE SOIL CONDITIONS.
- BITUMINOUS COATING REQUIRED FOR ALL CORRUGATED METAL PIPE (CMP).
- MATERIAL BENEATH SIDEWALKS AND SWALES SHALL BE COMPACTED TO 98% OF MAXIMUM DENSITY, PER AASHTO T-180.

PAVEMENT MARKING AND SIGNAGE SPECIFICATIONS:

- ALL SIGNING AND PAVEMENT MARKINGS SHALL BE INSTALLED IN ACCORDANCE WITH BROWARD COUNTY PUBLIC WORKS TRAFFIC ENGINEERING STANDARDS.
- ALL THERMOPLASTIC PAVEMENT MARKINGS SHALL BE APPLIED IN ACCORDANCE WITH FLORIDA DEPARTMENT OF TRANSPORTATION STANDARD SPECIFICATIONS FOR ROAD AND BRIDGE CONSTRUCTION.
- ALL EXISTING PAVEMENT MARKINGS IN CONFLICT WITH PROPOSED DESIGN SHALL BE REMOVED. METHOD OF REMOVAL TO BE APPROVED BY THE ENGINEER PRIOR TO ANY WORK IN THIS AREA.
- PROVIDE FOR TWO (2) BLUE REFLECTIVE PAVEMENT MARKERS IN THE CENTER OF THE DRIVE LANE ADJACENT TO EACH FIRE HYDRANT.
- PROVIDE FOR ONE (1) BLUE REFLECTIVE PAVEMENT MARKER IN THE CENTER OF THE DRIVE LANE ADJACENT TO EACH GATE VALVE.
- ALL EXISTING SIGNS (STOP, SPEED LIMIT, STREET NAMES, SCHOOL, ETC) SHALL BE RELOCATED WHERE CONFLICTING WITH PROPOSED DESIGN.
- PAVEMENT MARKINGS AND GEOMETRICS SHALL BE IN ACCORDANCE WITH MANUAL OF UNIFORM TRAFFIC CONTROL DEVICES FOR STREETS AND HIGHWAYS AND BROWARD COUNTY STANDARDS.

ON-SITE GRADING SPECIFICATIONS

- SITE GRADING TO INCLUDE ROUGH GRADING, PAD GRADING, FINE GRADING AND FINAL LANDSCAPE AREA GRADING.

EROSION CONTROL

1. STABILIZATION PRACTICES

LAKE BANKS AND FILL STOCKPILES WHERE ADJACENT CONSTRUCTION ACTIVITY CEASES FOR AT LEAST 21 DAYS WILL BE STABILIZED BY SEEDING AND MULCHING IN ACCORDANCE WITH THE FLORIDA DEPARTMENT OF TRANSPORTATION STANDARD SPECIFICATIONS FOR ROAD AND BRIDGE CONSTRUCTION 2000, SECTION 570. SEED AND MULCH SHALL BE APPLIED NO LATER THAN 14 DAYS FROM THE LAST CONSTRUCTION ACTIVITY IN THE AREA.

2. PERMANENT STABILIZATION

ALL LANDSCAPING, INCLUDING SODDING, SHALL BE INSTALLED ON THE PERIMETER LANDSCAPE BERMS IN ACCORDANCE WITH THE APPROVED LANDSCAPE PLAN WITHIN 14 DAYS OF THE LAST CONSTRUCTION ACTIVITY IN THE LANDSCAPE BUFFER AREAS.

3. STRUCTURAL PRACTICES

TEMPORARY SWALES SHALL BE CONSTRUCTED AT THE TOP OF BANK OF THE LAKE AND AT THE SITE PERIMETER TO PREVENT DIRECT RUNOFF FROM THE SITE. A SILTATION FENCE SHALL BE INSTALLED ALONG ALL PROPERTY LINES AT ALL TIMES DURING CONSTRUCTION ACTIVITIES. A WINDSCREEN SHALL BE INSTALLED ALONG ALL PROPERTY LINES AS DEEMED NECESSARY BY THE OWNER DURING THE CONSTRUCTION PROCESS TO REDUCE WIND-DRIVEN EROSION.

4. OFF-SITE VEHICLE TRACKING

A STABILIZED CONSTRUCTION ENTRANCE CONSISTING OF MINIMUM 4" COMPACTED LIMEROCK BASE WILL BE CONSTRUCTED AS SOON AS CONSTRUCTION STARTS TO REDUCE THE AMOUNT OF VEHICLE TRACKING FROM THE SITE. THE PAVED STREET ADJACENT TO THE CONSTRUCTION ENTRANCE WILL BE SWEEPED ON A REGULAR BASIS TO REMOVE ANY ACCUMULATION OF DIRT OR ROCKS WHICH HAVE BEEN TRACKED FROM THE SITE. ALL DUMP TRUCKS BRINGING MATERIAL TO, OR LEAVING THE SITE WILL BE COVERED WITH A TARPULIN.

5. EROSION AND SEDIMENT CONTROL, INSPECTION AND MAINTENANCE PRACTICES

- ALL CONTROL MEASURES WILL BE INSPECTED AT LEAST ONCE WEEKLY AND FOLLOWING ANY STORM EVENT GREATER THAN 1/2".
- REPAIRS WILL BE COMPLETED WITHIN 24 HOURS.
- THE LAKE BANK AND PERIMETER SWALES WILL BE INSPECTED REGULARLY AND REGRADED AS NECESSARY TO REMOVE THE BUILT UP SEDIMENT.
- TEMPORARY SEED AND MULCH AREAS AND PERMANENT SOD AREAS WILL BE INSPECTED REGULARLY FOR BARE SPOTS AND TO ENSURE ADEQUATE GROWTH.
- TURBIDITY SCREENS AND WINDSCREENS SHALL BE INSPECTED REGULARLY, AND REPAIRED AS NECESSARY.
- INSTALL SILT FENCE ALONG THE PERIMETER OF THE SITE.
- WRAP INLET TOPS IN FILTER FABRIC FOR ALL INLETS IN THE IMMEDIATE VICINITY OF SITE OR AS IDENTIFIED BY ENGINEER.

DATE						
DESCRIPTION						
REV.	1	2	3	4	5	
IMTIAZ AHMED, P.E. LICENSED ENGINEER NO. 46102 STATE OF FLORIDA						

SEAL

ROCK ISLAND PLAZA
MARGATE
FLORIDA

ATLANTIC ENGINEERING SERVICES, INC.

200 C2 CROSSWINDS DRIVE
WEST PALM BEACH, FLORIDA 33413
PHONE - (561) 358-4140
FAX - (561) 966-9242
CERTIFICATE OF AUTHORIZATION NO.: 9390

SCALE: AS SHOWN

DDT	DWN.	CHK.
SHEET NUMBER	CE6	
DATE DRAWN	05/01/09	

PAVING, GRADING AND DRAINAGE DETAIL

DATE					
DESCRIPTION					
REV.	1	2	3	4	5

IMTIAZ AHMED, P.E.
 LICENSED ENGINEER NO. 46102
 STATE OF FLORIDA

SEAL

ROCK ISLAND PLAZA
 MARGATE
 FLORIDA

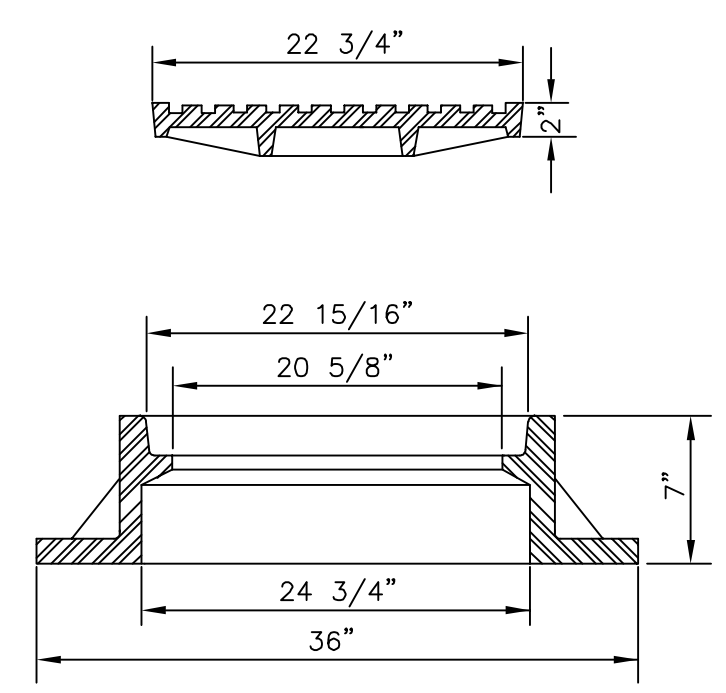
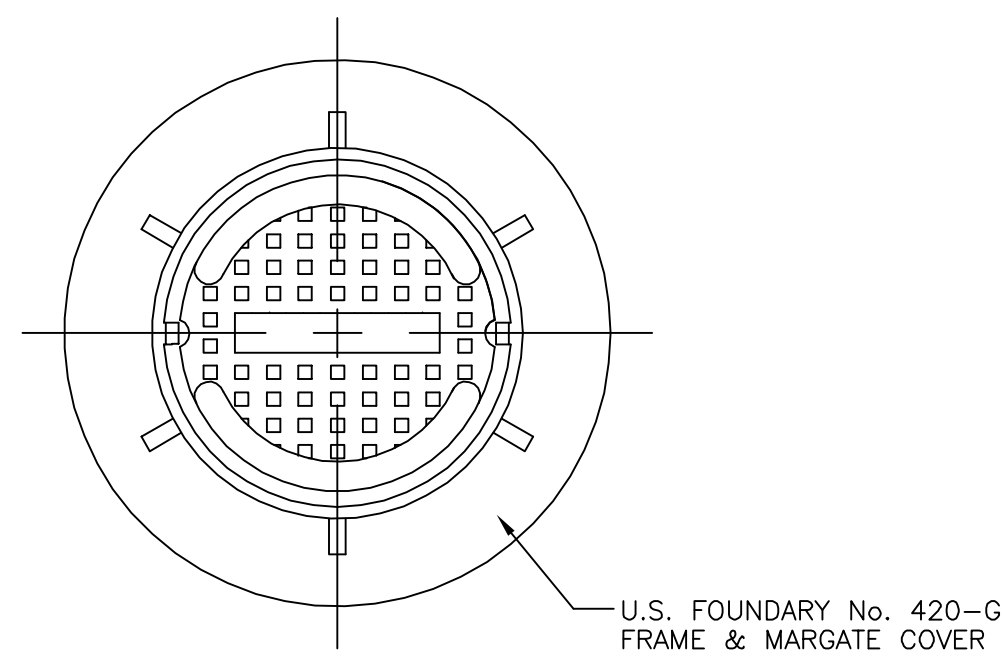
ATLANTIC ENGINEERING SERVICES, INC.

200 C2 CROSSWINDS DRIVE
 WEST PALM BEACH, FLORIDA 33413
 PHONE - (561) 358-4140
 FAX - (561) 966-9242
 CERTIFICATE OF AUTHORIZATION NO.: 9390

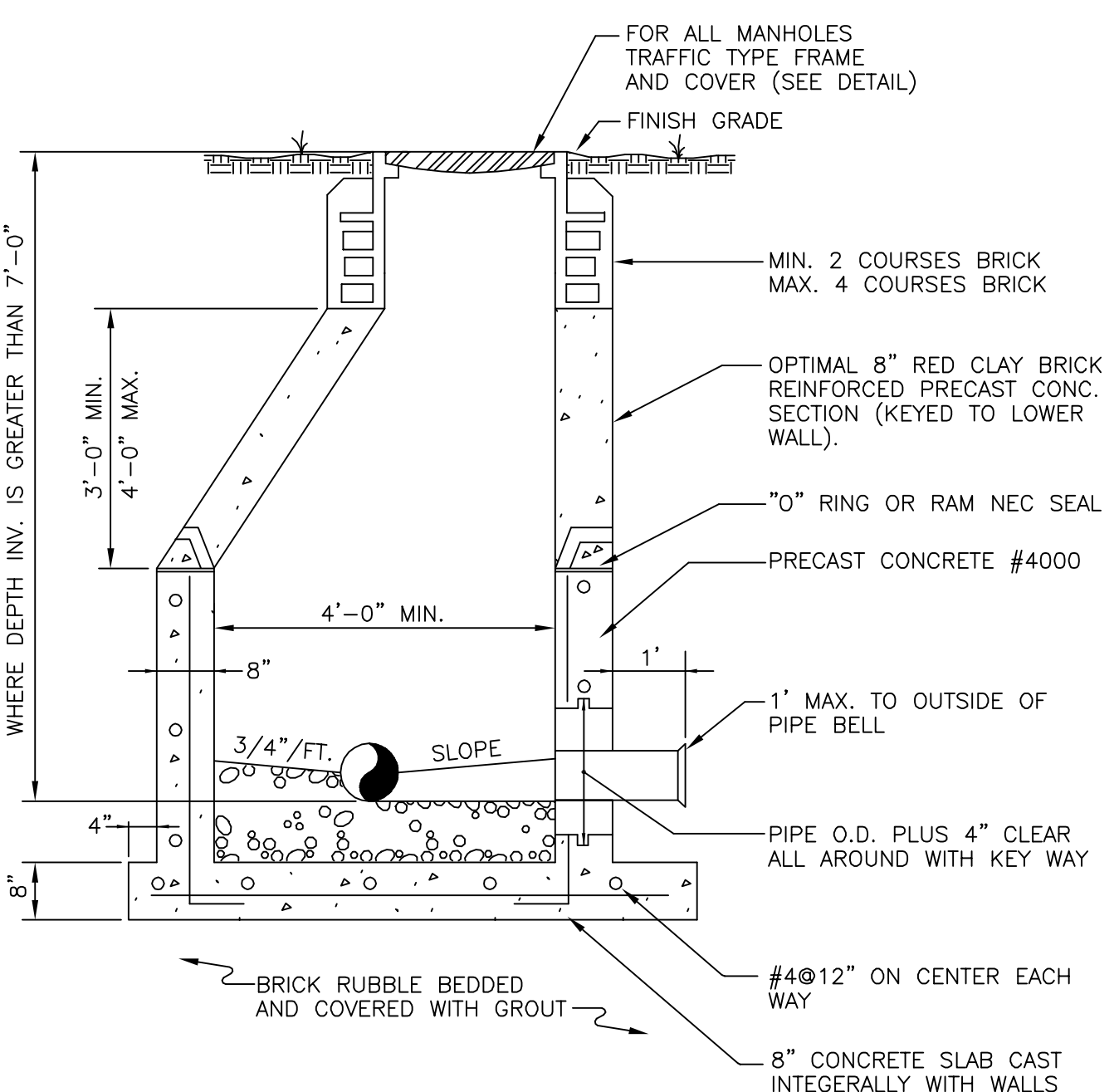
SCALE: AS SHOWN

DDT		
DES.	DWN.	CHK.
SHEET NUMBER		
CE8		
DATE DRAWN		
05/01/09		

WATER AND SEWER DETAILS

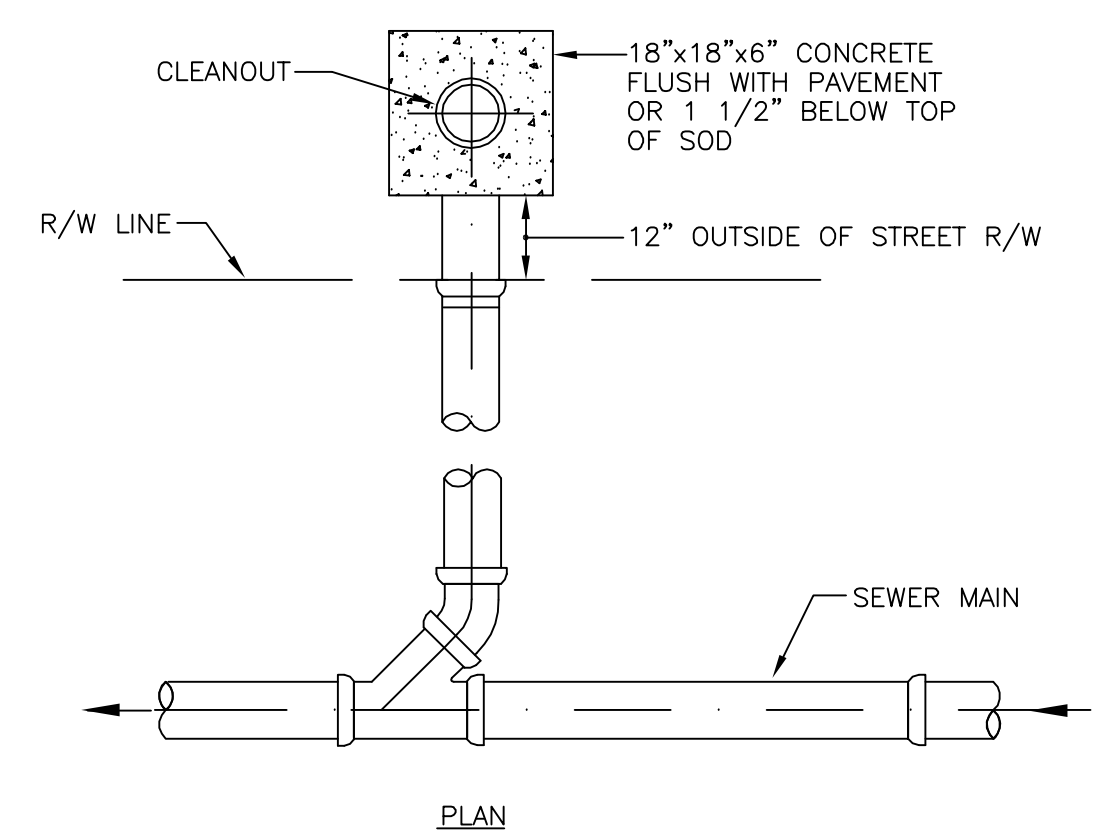


MANHOLE
 FRAME & COVER

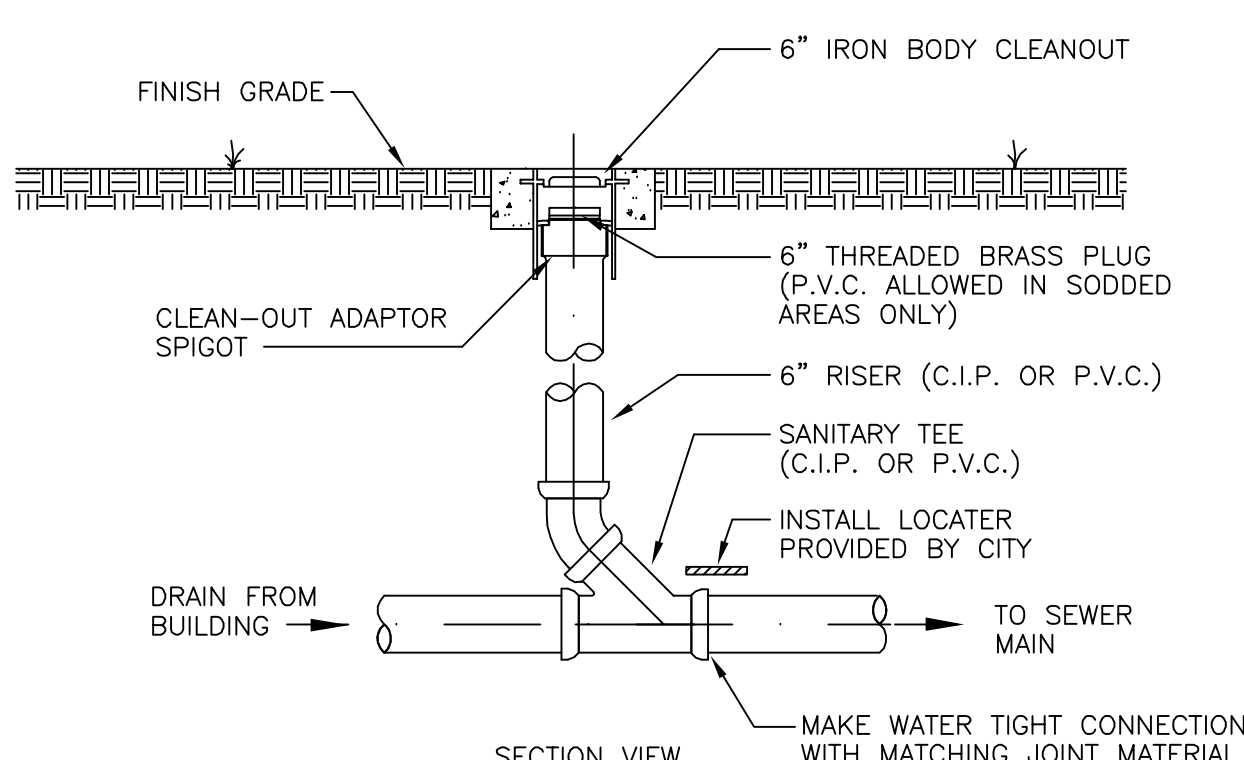


PRECAST MAINTENANCE
 ACCESS STRUCTURE

NOTE:
 MANHOLE STRUCTURE TO BE COATED INSIDE
 AND OUTSIDE.

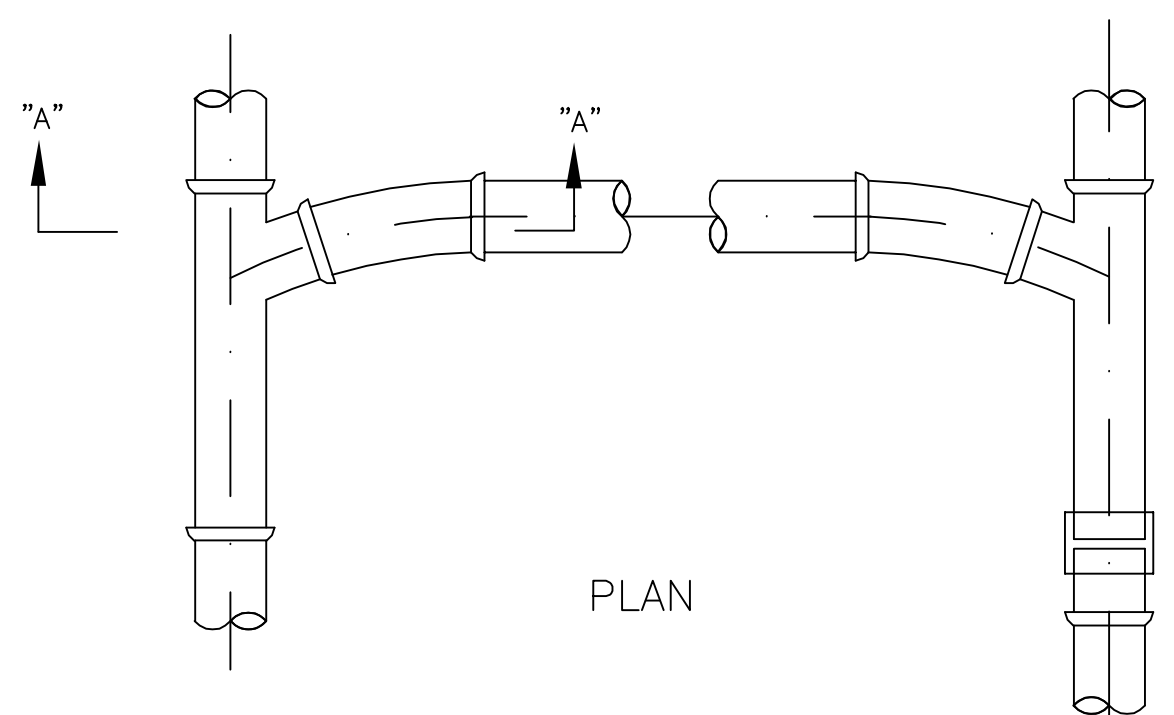


PLAN

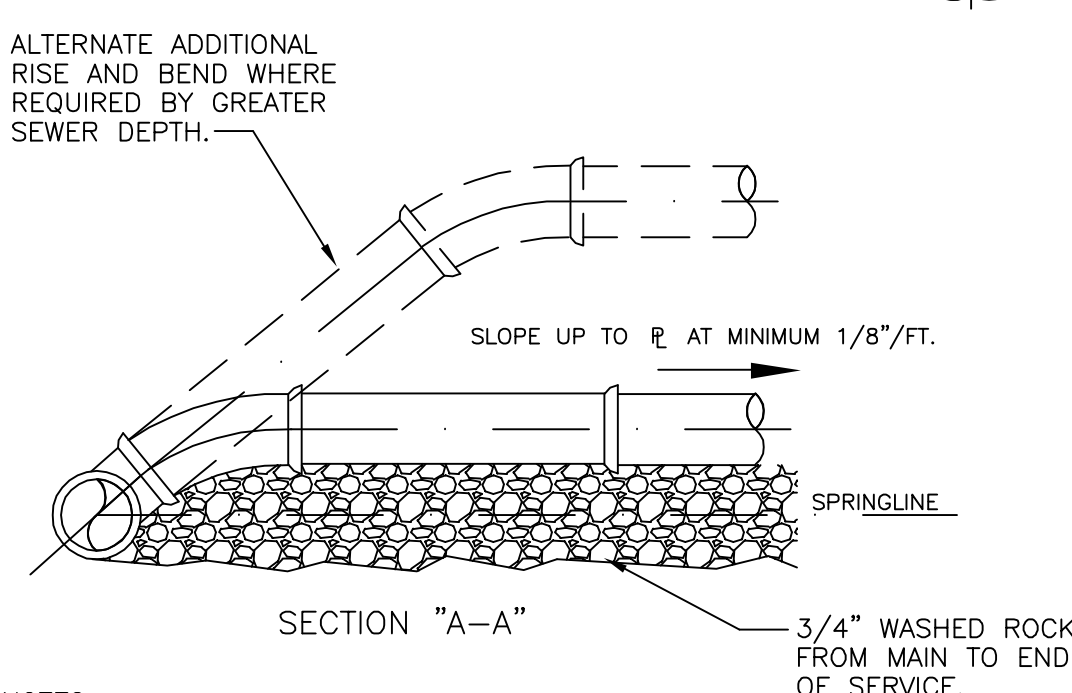


SECTION VIEW

BUILDING CONNECTION
 DETAIL



PLAN

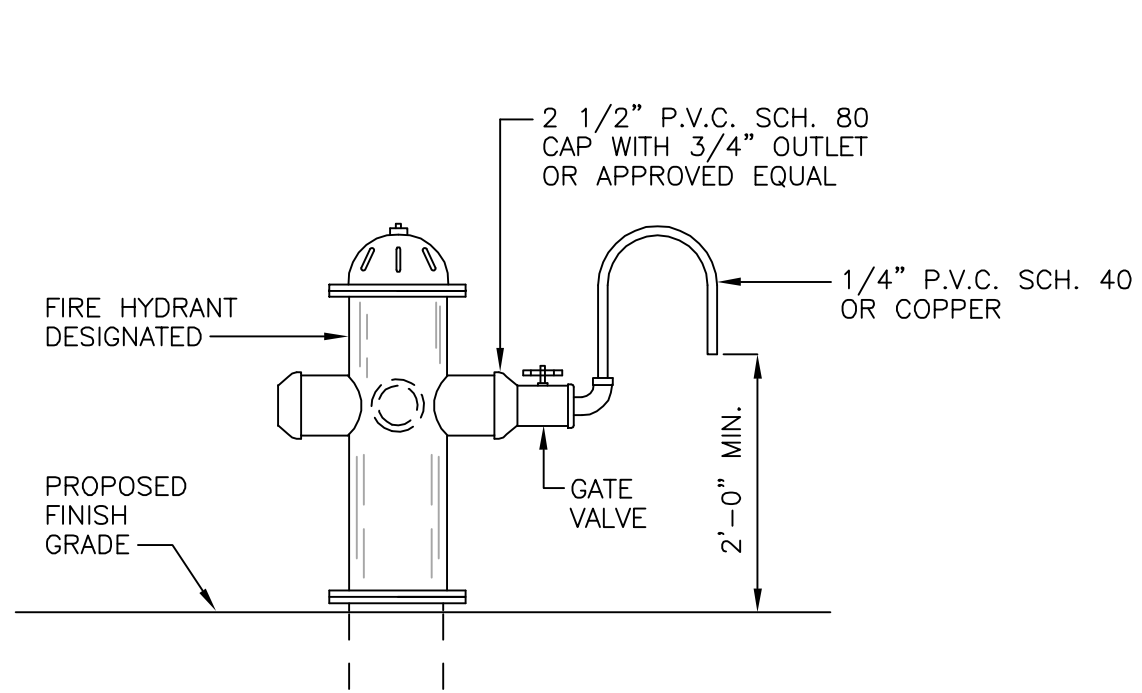


SECTION "A-A"

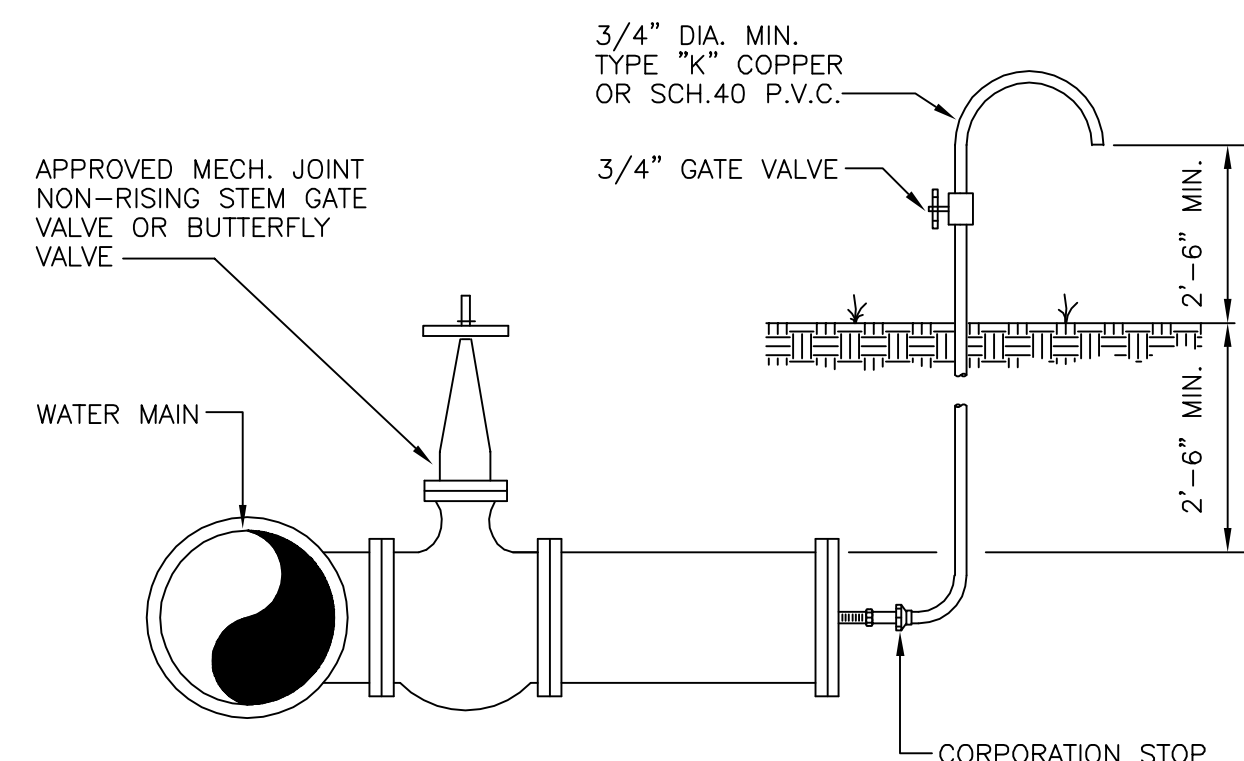
NOTE:

1. SINGLE SERVICE CONNECTIONS SHALL USE 6" PIPE AND FITTINGS.
2. DOUBLE SERVICE CONNECTIONS SHALL USE 6" PIPE AND FITTINGS.
3. USE RISER CONNECTION WHEN INV. OF SEWER IS MORE THAN 7'-0" DEEP.

WYE
 SERVICE CONNECTION

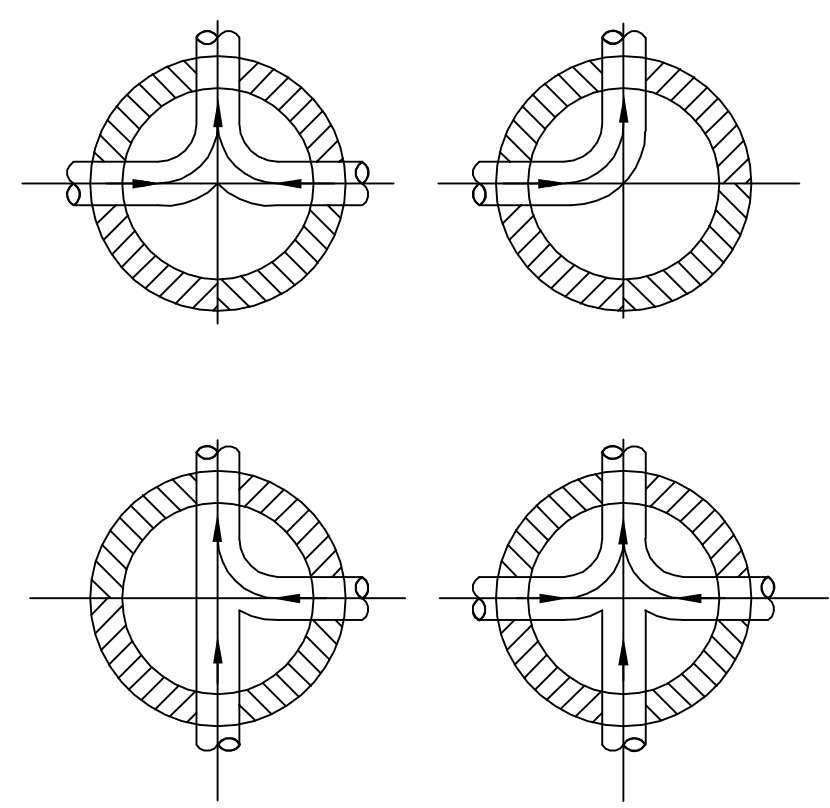


② FIRE HYDRANTS

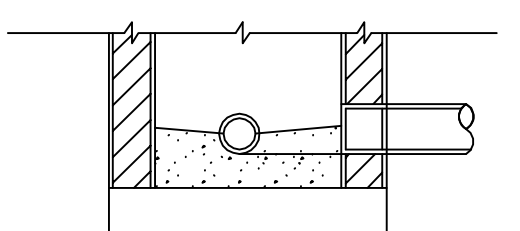


③ TERMINAL POINTS

STANDARD WATER AND SEWER DETAILS
 TYPICAL BACTERIOLOGICAL
 SAMPLING POINTS



PLAN OF BOTTOM & FLOW CURVES

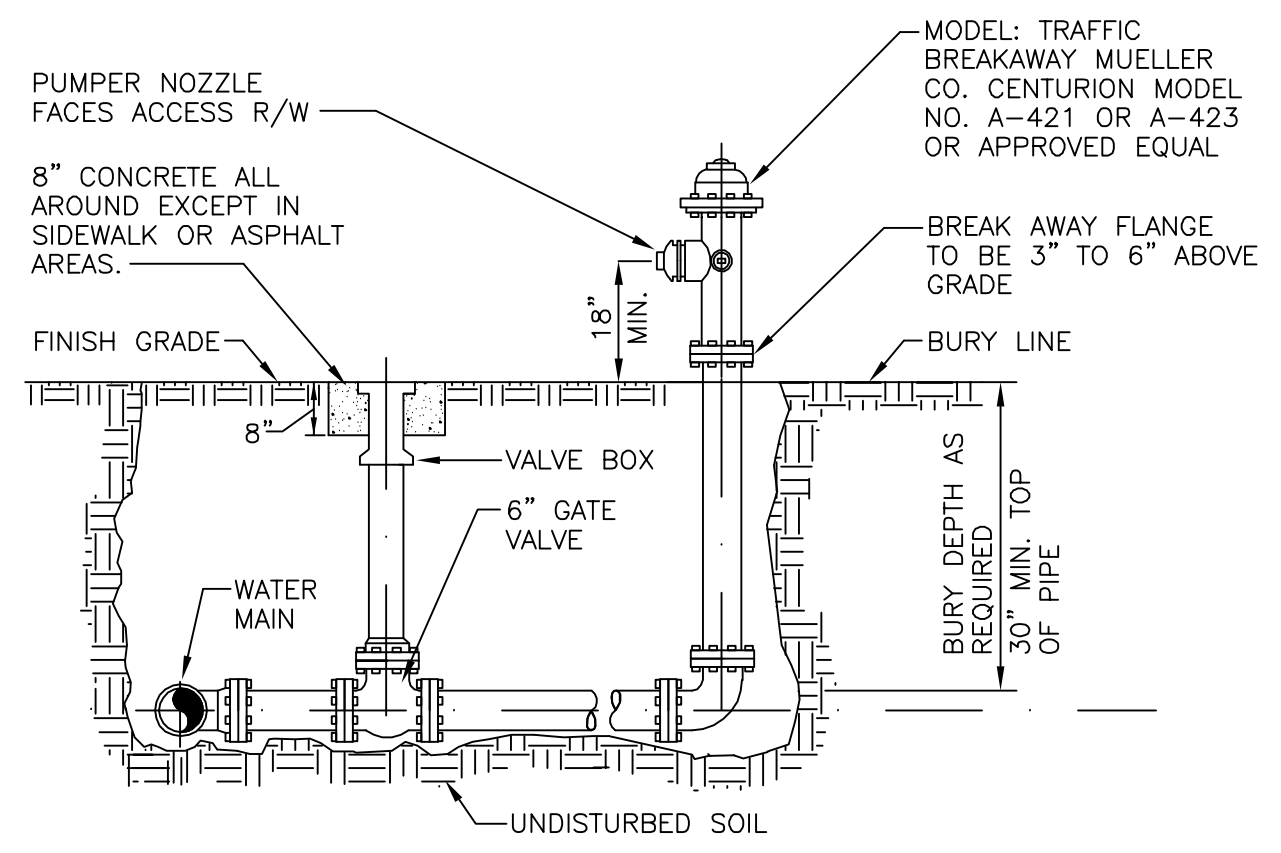
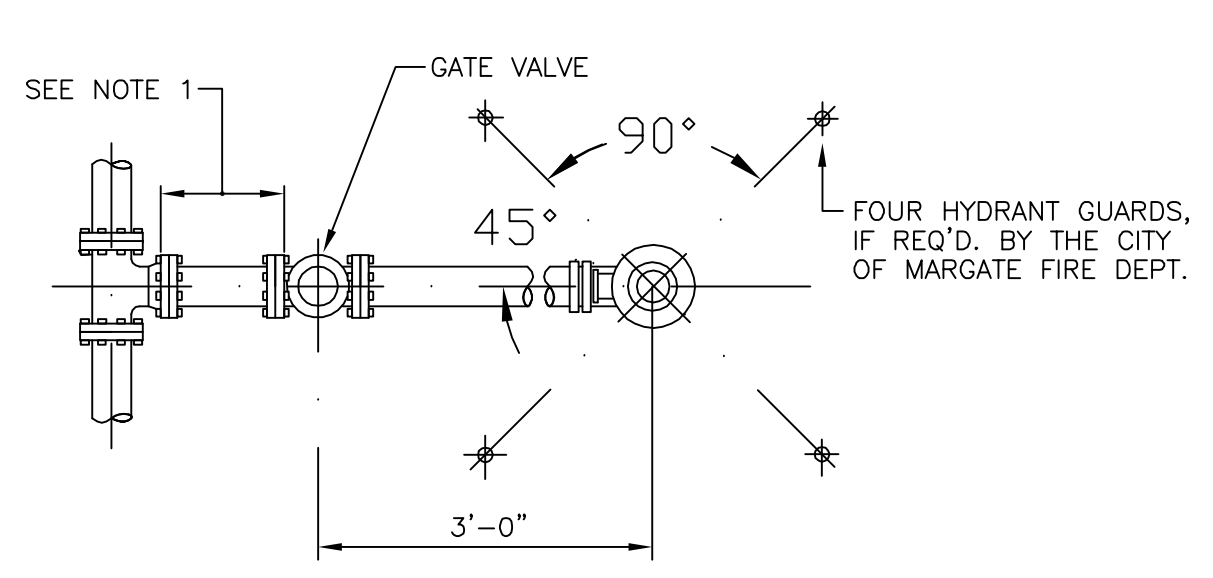


TYPICAL SECTION

NOTE:

1. PROVIDE SPILLWAY FOR SMOOTH FLOW BETWEEN PIPES WITH DIFFERENT INVERT ELEVATIONS.
2. SLOPE MAINTENANCE ACCESS STRUCTURE SHELF WITH 1" DROP/FT. FROM MAINTENANCE ACCESS STRUCTURE WALL TO CHANNEL.
3. INVERT CHANNEL TO BE CONSTRUCTED FOR SMOOTH FLOW WITH NO OBSTRUCTIONS.
4. CHANNEL FOR FUTURE CONNECTIONS SHALL BE FILLED WITH SAND AND WITH 1" OF MORTAR.
5. ALL CONCRETE SHALL USE TYPE II CEMENT ONLY.

INVERT CHANNEL
 FLOW DIRECTION

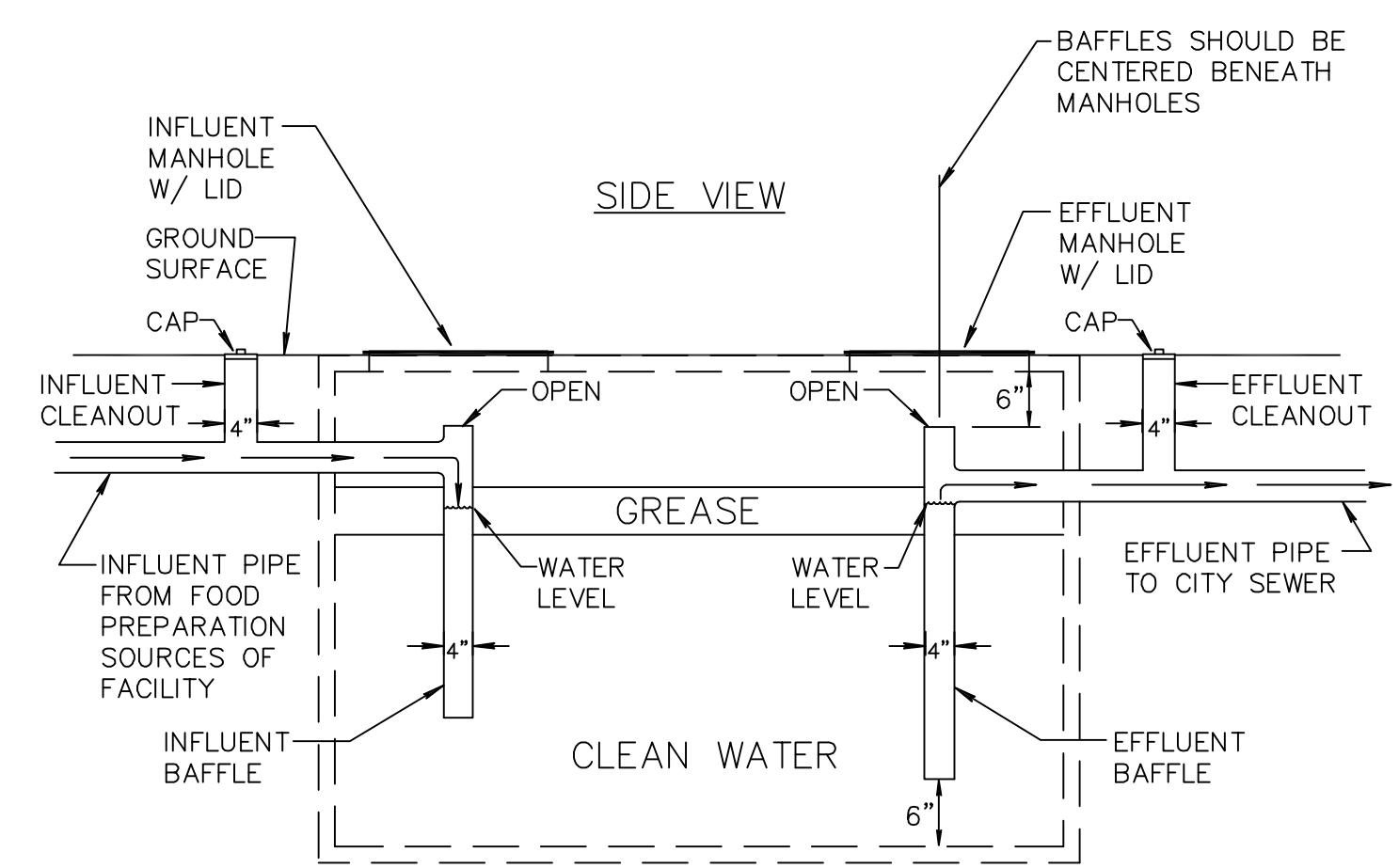


NOTES:

1. ALL FIRE HYDRANTS SHALL BE DIRECTLY CONNECTED TO FIRE HYDRANT SERVICE LINES HAVING A STANDARD INSIDE DIA. OF NOT LESS THAN 6 INCHES.
2. MAX. 500' DISTANCE BETWEEN FIRE HYDRANTS IN A SINGLE FAMILY RESIDENCE ZONING DISTRICTS OR RECREATIONAL AND OPEN SPACE DISTRICTS. MAX. 300' DISTANCE IN ALL OTHER ZONING DISTRICTS.
3. USE RESTRAINT JOINTS FOR ENTIRE ASSEMBLY SHOWN.

STANDARD WATER AND SEWER DETAILS

FIRE HYDRANT



SIDE VIEW

NOTE:

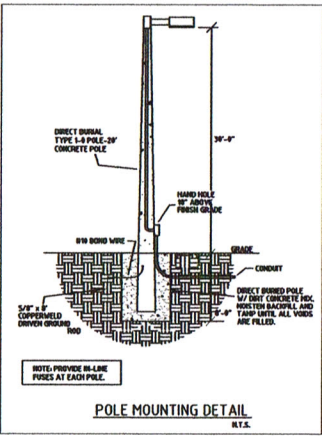
1. NO DOMESTIC EFFLUENT SHALL BE ALLOWED TO DISCHARGE THROUGH THE OIL/GREASE SEPARATOR AS STATED IN THE STANDARD PLUMBING CODE OF THE SOUTHERN BUILDING CODE, CONGRESS INTERNATIONAL (SBCI), CHAPTER 8, SECTION 801.3 "TYPES OF WASTE" WHICH IS ADOPTED BY THE CITY OF DELRAY BEACH.
2. ALL SIDES OF IN-GROUND OIL/GREASE SEPARATOR UNITS (EXCEPT ACCESS DOORS AND MANHOLES) ARE REQUIRED TO BE CONSTRUCTED OF 1/8" INCH (OR GREATER) STEEL OR 4" REINFORCED CONCRETE (OR GREATER).
3. GREASE INTERCEPTORS SHALL BE PUMPED OUT COMPLETELY AT A MINIMUM FREQUENCY ONCE EVERY NINETY 90 (DAYS), OR MORE FREQUENCY AS NEEDED TO PREVENT CARRY OVER OF GREASE INTO COLLECTION SYSTEM. SECTION 53.057 OIL & GREASE MANAGEMENT.

OIL/GREASE INTERCEPTOR

Luminaire Schedule						
Symbol	Qty	Label	Arrangement	Total Lamp Lumens	LLF	Description
⊕	9	SC	SINGLE	N.A.	0.800	LMC-30LU-5K-3-035
				Lum. Watts		
				34.5		

Calculation Summary								
Label	CalcType	Units	Avg	Max	Min	Avg/Min	Max/Min	
DRIVE SIDE PROPERTY LINE	Illuminance	Fc	1.84	2.8	0.4	4.60	7.00	
DUNKIN-DOUGHNUTS DRIVE	Illuminance	Fc	1.96	3.2	1.0	1.96	3.20	

LUMINAIRE SCHEDULE						
Symbol	Label	Qty	Catalog Number	Description	Lamp	Lumens
⊕	SA	7	VISIONAIRE ARV-213-ALB-VLF-WS-VL	ARIA ARCHITECTURAL LUMINAIRE 4000 LUMEN/INTER NAIL HOUSE SIDE LOWER FLAT GLASS LENS - CONCRETE POLE MTD - 30' A.G.	ONE VENTURE 400W/ UNIFORM FLUX START LAMP VENTICAL, WITH MATCHING BALLAST	4000 0.78 400
STATISTICS						
Description	Symbol	Avg	Max	Min	Max/Min	Avg/Min
DUMPSITE AREA ENTRY	+	2.7 Fc	3.1 Fc	2.2 Fc	1.4:1	1.2:1
PARKING	+	3.2 Fc	4.7 Fc	2.0 Fc	2.4:1	1.6:1
PROPERTY LINE EAST	+	0.2 Fc	0.5 Fc	0.0 Fc	N/A	N/A
PROPERTY LINE WEST	+	0.4 Fc	0.5 Fc	0.1 Fc	5.0:1	4.0:1



REV.	DESCRIPTION	DATE
1	B.D.C.	07/19/12
2	B.D.C.	03/06/13
3	OWNER REV.	01/14/14
4		
5		

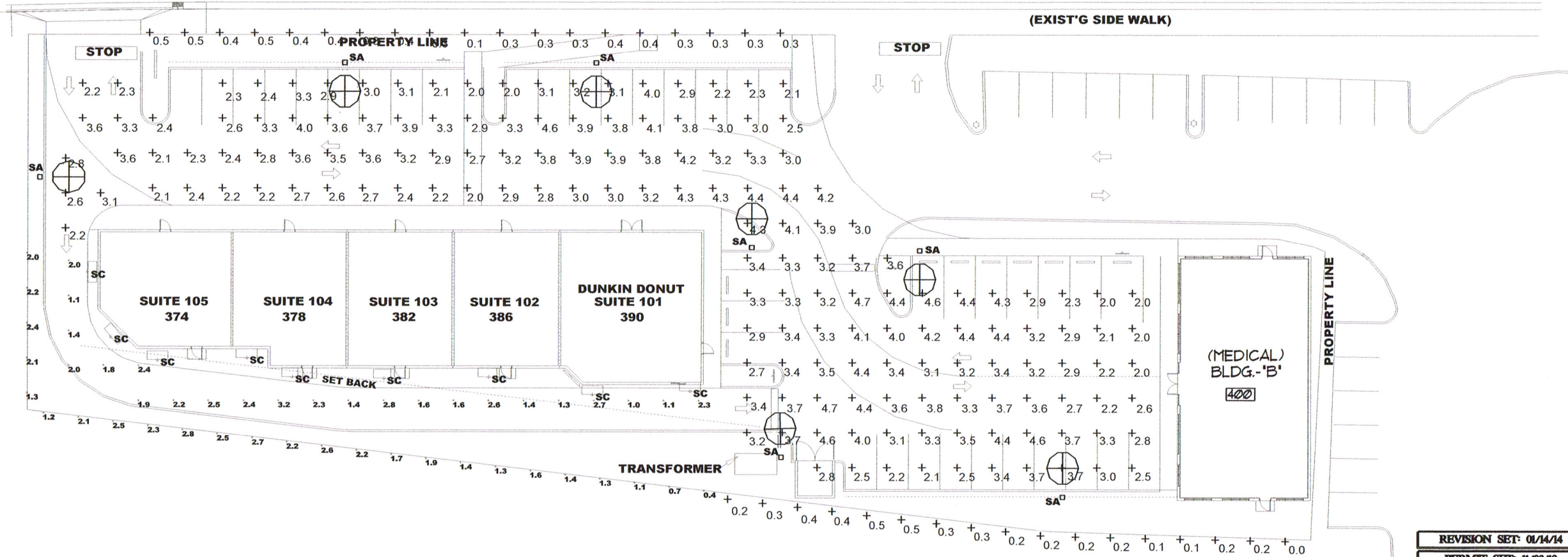
IMTAZ AHMED, P.E.
LICENSED ENGINEER NO. 46102
STATE OF FLORIDA

SEAL

ROCK ISLAND PLAZA
(BUILDING - "A")
374-390 ROCK ISLAND PLAZA
MARGATE, FLORIDA

ATLANTIC ENGINEERING SERVICES, INC.
200 C2 CROSSWINDS DRIVE
WEST PALM BEACH, FLORIDA 33413
PHONE - (561) 358-4140
FAX - (561) 966-9242
CERTIFICATE OF AUTHORIZATION NO.: 9390

PROJ. NO. 210016A	SCALE: AS SHOWN
CHK/PNW	R.F.F.
DES. DWN	CHK
SHEET NUMBER	
SL1.01	
DATE DRAWN	
11-03-10	



REVISION SET: 01/14/14
PERMIT SET: 11/03/10

NOTE:
ANY DESIGN CHANGES, TO THE SYSTEM COVERED BY THESE PLANS WITHOUT PRIOR APPROVAL OF THE ENGINEER WHO PREPARED THESE PLANS, WILL NULL AND VOID THESE PLANS AND THE REVISED INSTALLATION. IN ADDITION, ALL EXPENSES ASSOCIATED WITH RETURNING THE SYSTEM TO ITS ORIGINAL DESIGN WILL BE THE RESPONSIBILITY OF THE COMPANY WHICH APPROVED THESE CHANGES. FINAL BID TO INCLUDE PERMIT COMMENTS.

FORMICA & ASSOCIATES Inc.
Consulting Engineers
3100 N.W. Boca Raton Blvd.
Suite #117
Boca Raton, FL 33431
TEL: (561) 368-3611 FAX: (561) 368-4733
Certificate #00008818
Robert F. Formica, P.E. License #19733
E-mail: formica@formicaengineering.com

SITE PHOTOMETRICS

DATE DRAWN
05/01/09