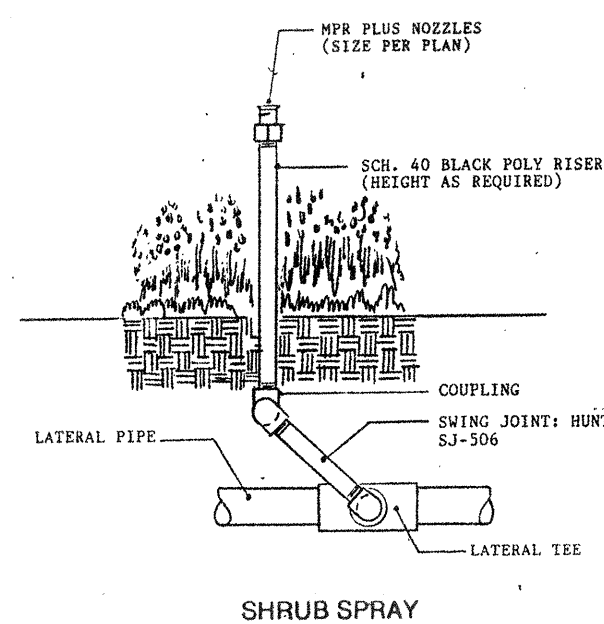
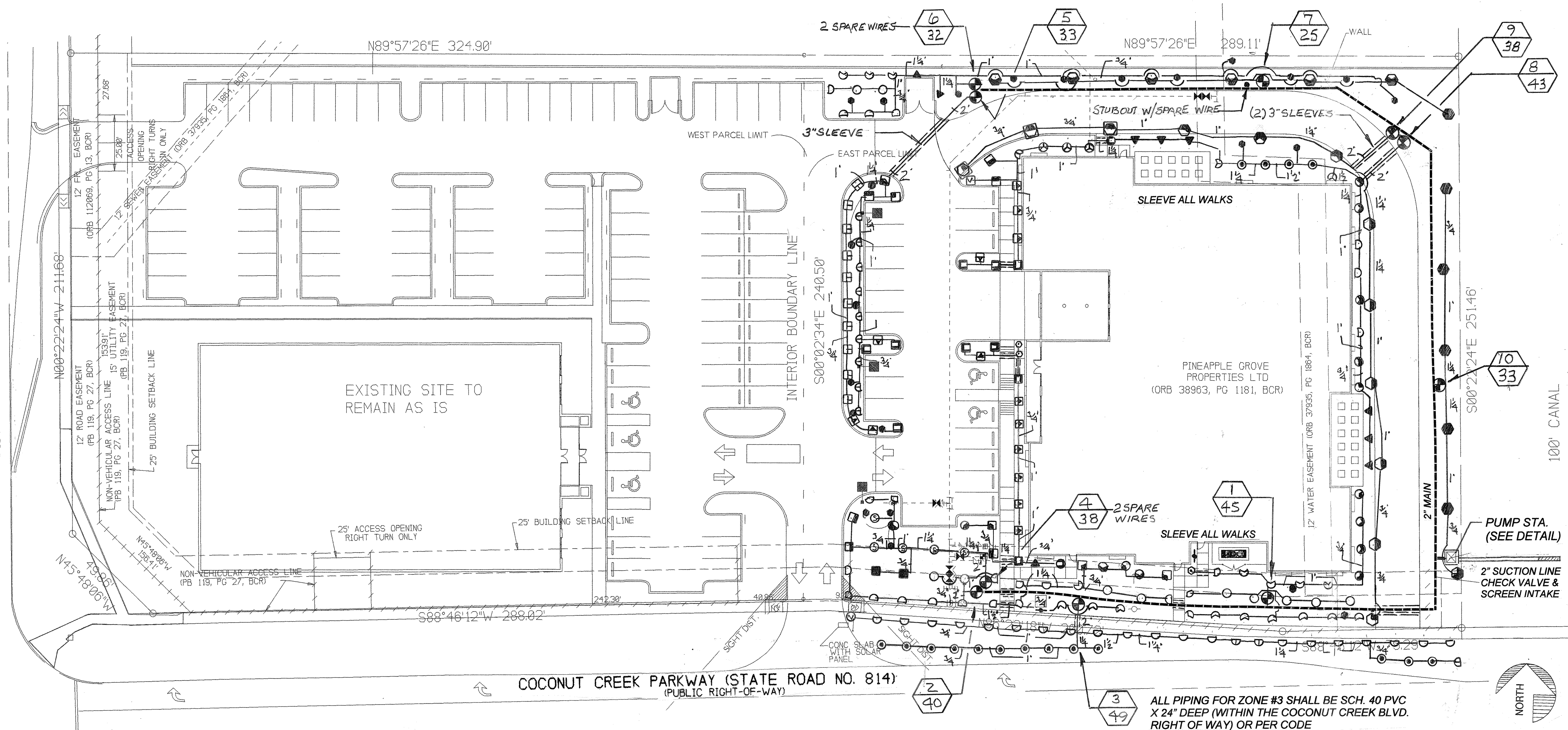
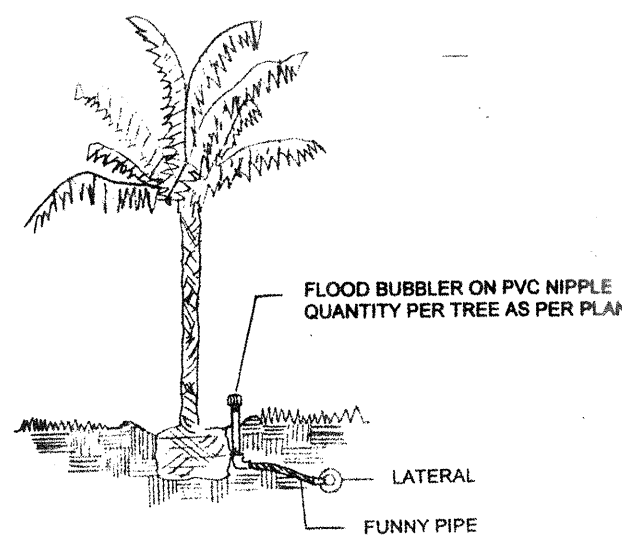


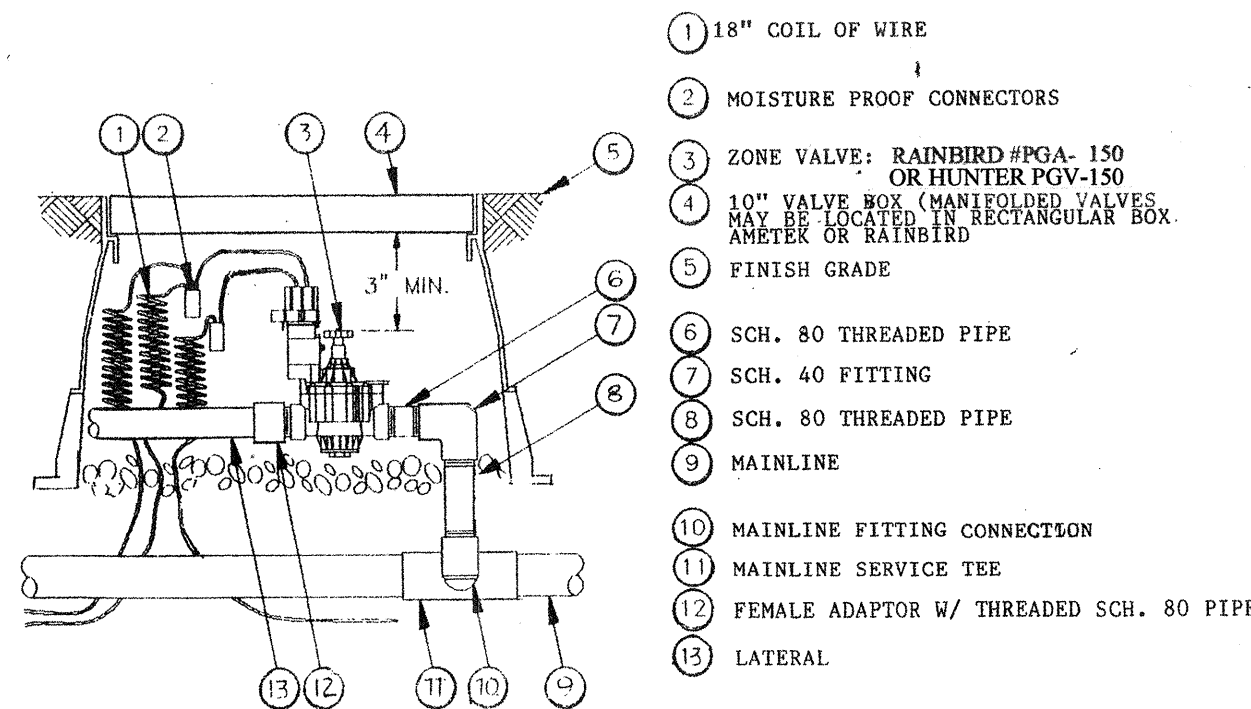
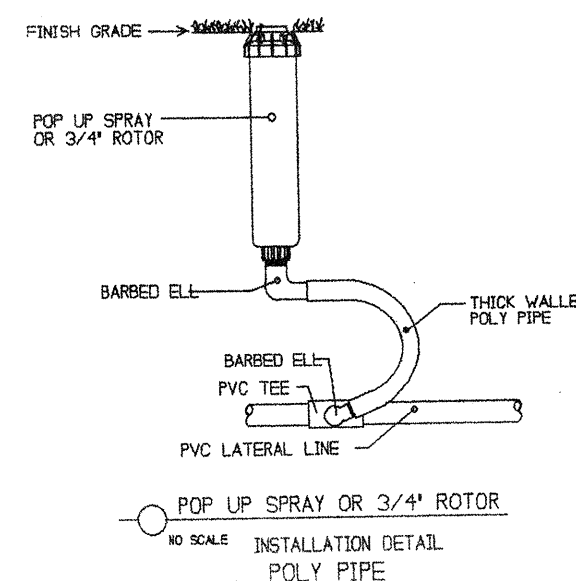
BANKS ROAD
(PUBLIC RIGHT-OF-WAY)



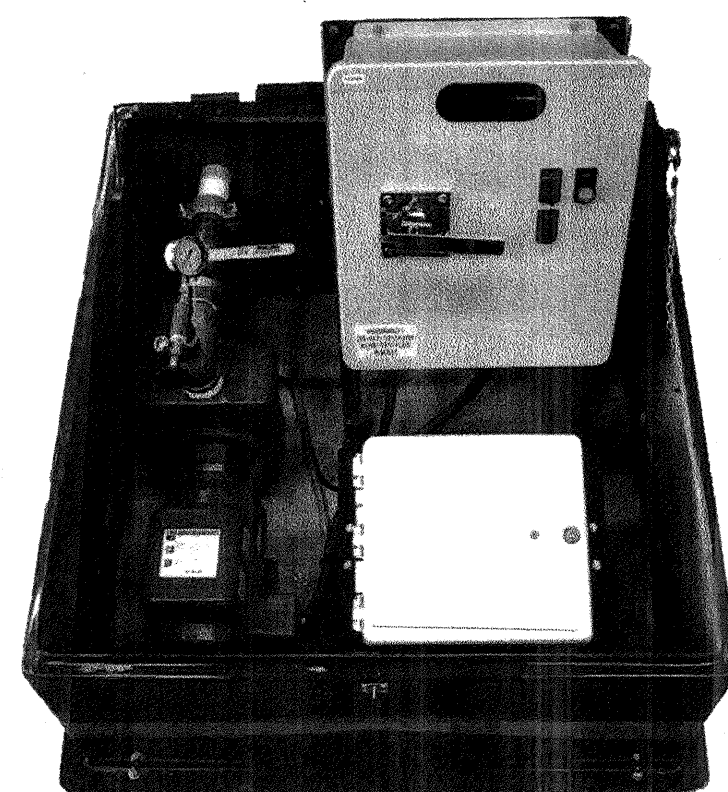
SHRUB SPRAY



TREE BUBBLER



ZONE VALVE



PUMP STATION
50 GPM @ 120 TDH
IRRIGATION CRAFT ECONO SERIES
W/ 3 HP STARITE DHH-3 PUMP AND
HUNTER PCC-1220 CONTROLLER
WITH RAINWITCH TO CODE
INSTALL ON CONCRETE PAD TO CODE

NOTES:

PIPING:

MAINLINES: CLASS 160 PVC SOLVENT WELD.
ZONE LINES: CLASS 200 FOR 3/4" & 1", CLASS 160 FOR 1-1/4" & LARGER
(ZONES IN THE RIGHT OF WAY TO BE SCH. 40 PVC)
SLEEVES: SCH. 40 PVC SOLVENT WELD (USE NO COUPLINGS)
FITTINGS: MAINLINE = SCH. 40 PVC
ZONE LINES = SCH. 40 PVC

FABRICATION: SQUARE CUT, DEBURR AND FULLY ENGAGE JOINTS. USE PURPLE PRIMER ON ALL PIPE 3" & LARGER. USE PURPLE CLEANER ON ALL PIPE 2-1/2" & SMALLER. USE GREY MEDIUM BODY CEMENT ONLY FOR ALL JOINTS.

ALL PIPE AND FITTINGS TO CONFORM TO LATEST ASTM SPECS.

DEPTH OF LINES:

MAINLINE & WIRING = 24" DEEP, MIN.
SLEEVES UNDER PAVEMENT = 24" DEEP, MIN.
ZONE LINES: 18" DEEP, MIN. FOR 2" & LARGER & 15" DEEP, MIN. FOR 1-1/2" & LESS
(ZONES IN THE RIGHT OF WAY TO BE 24" DEEP OR TO CODE)

CONTROL WIRING:

#14 AWG FOR HOT & SPARE WIRES, #12 AWG FOR COMMONS.
SINGLE STRAND SOLID COPPER IRRIGATION WIRE, TYPE PE OR UF, FOR DIRECT BURIAL. RUN UNDER MAIN WITH SLACK. SPICE WIRES ONLY IN VALVE/SPICE BOXES. COIL 24" OF WIRE AT ALL VALVE CONNECTIONS. USE FULL SIZE MOISTURE PROOF CONNECTORS FOR ALL SPLICES, DBY OR EQUAL. RUN SPARES AS NOTED ON PLANS.

BACKFILL ALL TRENCHES FREE OF DEBRIS OR SHARP OBJECTS. USE CLEAN FILL AS LOCAL CODES REQUIRE. COMPACT TO ORIGINAL DENSITY. FLUSH ALL LINES, USE SCREENS IN ALL HEADS, ADJUST HEADS FOR PROPER COVERAGE AVOIDING WATER ON WALLS, WALKS OR PAVED AREAS. ALL DETAILS ARE GRAPHICALLY SHOWN ONLY QUANTITIES SHOWN SHALL BE VERIFIED PRIOR TO BIDDING OR INSTALLATION. IT SHALL BE THE CONTRACTORS RESPONSIBILITY TO ASSURE COMPLETE OVERLAPPING COVERAGE. ANY DISCREPANCIES SHALL BE REPORTED TO THE OWNER AND LANDSCAPE ARCHITECT/IRRIGATION DESIGNER BEFORE PROCEEDING. THE LANDSCAPE ARCHITECT/IRRIGATION DESIGNER RESERVES THE RIGHT TO MAKE MINOR FIELD CHANGES. THE CONTRACTOR MAY MAKE MINOR ADJUSTMENTS/ NOZZLE SELECTION TO SUIT FIELD CONDITIONS. LOCAL CODES AND REGULATIONS SHALL TAKE PRECEDENCE OVER THE PLANS, IT SHALL BE THE CONTRACTORS RESPONSIBILITY TO COMPLY.

PROVIDE THE OWNER WITH AN ACCURATE 'AS INSTALLED' PLAN SHOWING THE MAINLINES, WIRE SPLICES, VALVE LOCATIONS & ROAD CROSSINGS USING TWO DIMENSIONS FROM FIXED DATUMS.

CONTRACTOR SHALL HAVE ALL UNDERGROUND UTILITIES LOCATED PRIOR TO COMMENCEMENT OF WORK AS REQUIRED BY FLORIDA LAW.

SPRINKLER HEAD LEGEND

SYM.	TYPE	MODEL	QTY.
POP UP TURF ROTORS	RAINBIRD #5006-3.0-PC		16
	#5006-6.0-FC		6
12" POP UP ROTORS	RAINBIRD #5012-3.0-PC		3
6" POP UP SPRAYS	HUNTER #PROS-06-NOZZLE BELOW		119
	-12" F		
	-12" ADJ		
	-12" TT OR ADJ		
	-12" H		
	-12" T		
	-12" Q		
	-10" F		
	-10" TT OR ADJ		
	-10" H		
	-SS530		
	-SS515 (L OR R)		
	-5" CST-B		
	-PCN-50		
12" POP UP SPRAYS	HUNTER #PROS-12-NOZZLE BELOW		48
	-12" F		
	-12" ADJ		
	-12" H		
	-12" T		
	-12" Q		
	-10" H		
	-SS530		
	-SS515 (L OR R)		
SHRUB SPRAYS	HUNTER #PROS-04-NOZZLE BELOW		22
	-12" F		
	-12" TT OR ADJ		
	-12" T		
	-12" Q		
	-10" TT OR ADJ		
TREE BUBBLERS	HUNTER #AFB		21

NOTE: USE PROPER SCREEN IN ALL HEADS...

SYMBOLS - LEGENDS

MAINLINE: 2" CLASS 160 PVC W/ LOW VOLTAGE WIRING PER SPECS.
SLEEVES: SCH. 40 PVC AS NOTED ON PLANS
PUMP STATION: 3 H.P. W/ CONTROLS PER DETAIL
ZONE VALVES: 1-1/2" W/ VALVE BOX PER DETAIL
STATION #
G.P.M. OF ZONE

THESE DRAWINGS ARE NOT VALID FOR SUBMITTAL OR CONTRACT CONSTRUCTION USE WITHOUT THE SIGNATURE OF THE LANDSCAPE ARCHITECT. ANY CHANGES TO THESE DRAWINGS MUST BE MADE BY THE LANDSCAPE ARCHITECT. UNLESS OTHERWISE NOTED, ALL DIMENSIONS ARE IN FEET AND INCHES. CLIENT INHOUSE PURPOSES & BIDDING ONLY.

RIGHT OF OWNERSHIP: The drawings, designs, arrangements and data represented by these plans are an instrument of service for the project only and are owned by the landscape architect. No part of these drawings may be reproduced, stored in a retrieval system, or transmitted in any form or by any means, electronic, mechanical, photocopying, recording, or by any information storage and retrieval system, without the prior written permission of the landscape architect. The landscape architect assumes no responsibility for the construction of the project or for the performance of the project. The landscape architect's liability is limited to the design and construction of the project. The landscape architect's liability is limited to the design and construction of the project. The landscape architect's liability is limited to the design and construction of the project.

NO	REVISIONS
MAY 5, 2008	
JULY 3, 2008	
JULY 21, 2008	
JULY 22, 2010	
MARCH 29, 2011	
FEBRUARY 23, 2015	

SCALE: 1"=30'
DATE: DEC 3, 2007
DRAWN BY: R J H

IRRIGATION PLAN FOR DOMINION STORAGE
BANKS ROAD - MARGATE, FLORIDA

Michael J. Petrov
and
Associates, Inc.
Landscape Architecture
P.O. Box 880, Coral Springs, FL 33075
Phone: (954) 484-6659 F.I. Reg. 4562

SHEET NO: I-1
OF: ONE