

# PUD APPLICATION

## CITY OF MARGATE

JULY 2015

Prepared for:

**CELEBRATION POINTE SOUTH, LLC**

12448 SW 127 AVENUE  
MIAMI, FL 33186

Prepared by:



**HSQ GROUP INC.**

1489 W. Palmetto Park Road  
Suite 340  
Boca Raton, FL 33486

**PUD APPLICATION**  
**CITY OF MARGATE**  
**July 2015**

**CELEBRATION POINTE**

Prepared for:

Celebration Pointe South, LLC

Prepared by:

HSQ GROUP, INC.

1489 W. Palmetto Park Road, Suite 340

Boca Raton, Florida 33486

**Application: This is a modification to the currently approved PUD. The level of service for the original application was based upon 580 multifamily units. Phase one has been approved for 282 multifamily units. Phase 2 request is for 252 units. A total of 534 multifamily units to be constructed for the entire PUD. The remaining 46 units to reside with the PUD for future phase.**

## **TABLE OF CONTENTS**

<b>SECTION</b>	<b>ITEM</b>
<b>1.</b>	<b>LETTER OF TRANSMITTAL</b>
<b>2.</b>	<b>EXISTING SITE CONDITIONS</b>
<b>3.</b>	<b>DEVELOPER INFORMATION AND SITE LOCATIONS</b>
<b>4.</b>	<b>GENERAL SITE INFORMATION</b>
<b>5.</b>	<b>EXISTING AND PROPOSED USES</b>
<b>6.</b>	<b>PROJECT DENSITY AND POPULATION</b>
<b>7.</b>	<b>PROPOSED COMMERCIAL USAGE</b>
<b>8.</b>	<b>PLAN FOR CIRCULATION, STREETS AND PARKING</b>
<b>9.</b>	<b>PLAN FOR OPEN SPACE AND RECREATION FACILITY</b>
<b>10.</b>	<b>PROVISIONS FOR MUNICIPAL AND PUBLIC SERVICES</b>
<b>11.</b>	<b>PROVISIONS FOR WATER, SEWER AND UTILITIES SERVICES</b>
<b>12.</b>	<b>PUBLIC EDUCATION ANALYSIS</b>
<b>13.</b>	<b>DRAINAGE ANALYSIS</b>
<b>14.</b>	<b>CONSISTENCY WITH GOALS, OBJECTIVES AND POLICIES OF THE CITY OF MARGATE COMPREHENSIVE PLAN</b>
<b>15.</b>	<b>TRAFFIC CIRCULATION ANALYSIS</b>
<b>16.</b>	<b>DEDICATION OF LAND TO CITY, COUNTY AND STATE</b>
<b>17.</b>	<b>EXISTING ZONING WITHIN ONE MILE OF SITE</b>
<b>18.</b>	<b>DESCRIPTION OF PROPOSED PUD STANDARD FOR ALL STREETS AND LANDSCAPING</b>
<b>19.</b>	<b>THE PROPOSED ORDER OF DEVELOPMENT PHASES</b>
<b>20.</b>	<b>PLANNING BOARD REQUIREMENTS</b>
<b>21.</b>	<b>EXHIBIT M LOCATION MAP WITH TWO MILE RADIUS OF MAJOR STREETS.</b>
<b>22.</b>	<b>EXHIBIT I BOUNDARY MAP</b>
<b>23.</b>	<b>EXHIBIT J GENERAL CONCEPT PLAN</b>
<b>24.</b>	<b>EXHIBIT J MASTER PLAN</b>
<b>25.</b>	<b>EXHIBIT K UTILITIES PLAN</b>
<b>26.</b>	<b>EXHIBIT J STREET MAPS</b>
<b>27.</b>	<b>EXHIBIT K GRADING AND DRAINAGE PLAN</b>
<b>28.</b>	<b>EXHIBIT L TYPICAL LANDSCAPE PLAN</b>
<b>29.</b>	<b>EXHIBIT J&amp;N TYPICAL RESIDENTIAL PLAN</b>

**1. LETTER OF TRANSMITTAL**

**Name, title, address, and telephone number of local government contact.**

Mr. Ben Ziskal, AICP  
Director of Economic Development  
**City of Margate**  
City Hall, Third Floor, 5790 Margate Boulevard  
Margate, Florida 33063  
(954) 972-6454

**2. EXISTING SITE CONDITIONS**

The phase one 282 multifamily units are under construction to be completed by January 2016 consisting of approximately 15.4 acres. Phase 2 site is currently vacant with the remnants of the original mobile home park roads, utilities and drainage ditch consisting of approximately 14.3 acres.

**3. DEVELOPER INFORMATION AND SITE LOCATION**

**A. Name, address and telephone number of the applicant.**

Omar Fonte  
Celebration Pointe South, LLC.  
12448 SW 127 Avenue  
Miami, Florida 33186  
(305)969-2000

**B. Name, address and telephone number of the Engineer.**

Jay M. Huebner, P.E.  
**HSQ Group, Inc.**  
1489 W. Palmetto Park Road, Suite 340  
Boca Raton, Florida 33486  
(561) 392-0221

**C. Name, address and telephone number of the architect:**

Gene Palenzzuala  
**Palenzuela & Hevia Design Group, Inc.**  
12201 S.W. 133 CT.  
Miami, FL 33186

**D. Name, address and telephone number of the landscape architect:**

Andy Witkin  
**Witkin Hults Design Group, Inc.**  
307 S. 21st. Avenue  
Hollywood, FL 33020  
T (954) 923 9681  
F (954) 923 9689

**E. Name, address and telephone number of the attorney:**

Gerry Knight  
**Billing, Cochran, Heath, Lyles, Mauro & Ramsey, P.A.**  
888 SE 3<sup>rd</sup> Avenue, Suite 301  
Fort Lauderdale, Florida 33301  
(954)764-7150

**F. Name, address and telephone number of the property owner.**

Omar Fonte  
Celebration Pointe South, LLC.  
12448 SW 127 Avenue  
Miami, Florida 33186  
(305)969-9916

# Celebration Pointe South, LLC

## Business Summary

Celebration Pointe South, LLC is a multifamily real estate operating company focused on innovative developments, strategic acquisitions, and is associated with proactive management of multifamily residential rental communities. Projects built by the principals have consisted of single-family homes, town homes, and condos and villas ranging from the conventional and comfortable to the luxurious and elegant focused on quality, diverse design, great locations, and complete amenities and have included retail shopping centers and storage facilities as well. Our communities span from Homestead to West Palm Beach, with properties up to Orlando, Florida.

Our main office is located in West Kendall, Florida. There we develop and manage assets and provide upper management support and oversight. Our personnel, managers, and directors have a collective experience of over 50 years in the real estate development industry.

We have attached a list of communities and units totaling over 3,600 that we completed from 2001 through 2015 with over \$530,000,000 in total assets. We were one of the developers instrumental and involved in the revitalization of Homestead, Florida and participated towards the funding of the new Baptist Hospital of Homestead.

Our goal is to continue expanding our business operations directed to providing quality residential real estate to individuals and families within the local community and South Florida. Celebration Pointe North, LLC is a sister company to Celebration Pointe South, LLC and has developed phase one of this community.

#### **4. GENERAL SITE INFORMATION**

##### **A. Concise written description of this size and boundaries of the area proposed to be amended.**

The subject parcel contains approximately 29.7 net acres and 30.18 gross acres and is located at the East intersection of State Road 7 and Celebration Blvd. Phase one consists of 15.44 acres (North half) and phase 2 consists of 14.26 acres and is generally the South half of the property.

##### **B. Proposed site acreage breakdown.**

Net site acreage:	29.70 acres.
Pavement:	9.05 acres
Sidewalk/ pool:	2.36 acres
Building:	5.97 acres
Lake (water surface)	4.68 acres.
Green area (open Space)	7.64 acres

##### **Phase one site acreage breakdown only:**

Phase one acreage	15.44 acres.
Pavement:	4.65 acres
Sidewalk/pool:	1.02 acres
Building:	2.86 acres
Lake (water surface)	2.31 acres.
Green area (open Space)	4.60 acres

**Phase two site acreage breakdown only:**

Phase two acreage	14.26 acres.
Pavement:	4.40 acres
Sidewalk/pool:	1.34 acres
Building:	3.11 acres
Lake (water surface)	2.37 acres.
Green area (open Space)	3.04 acres

**C. Setback table:**

Minimum 25' from property line.

Minimum 20' between buildings not including auxiliary buildings.

Minimum 5' front set back from curb to building.

Minimum rear yard set back 20' between buildings not including auxiliary buildings.

**B. Legal description of the area proposed project.**

Tract A of the Celebration Pointe Plat, Plat Book 178, Page 68 in Broward County, Florida. 29.50 acres total site. North R/W vacation of 0.20 acres. Total 29.70 acres.

**5. EXISTING AND PROPOSED USES**

**A. Current and proposed local and Broward County Land Use Plan designation(s) for the amendment site.**

	City of Margate	Broward County
Current	R20 Residential	Low medium (5-10) Residential
Proposed	R20 Residential	No change

**B. Current land use designations for the surrounding properties.**

	<b>City of Margate</b>	<b>Broward County</b>
North	R10 & park & TOC	Medium(10-16) & L-5 Residential
East	R10 Residential	Low Med (10) Residential
South	Transit Oriented Corridor	Industrial and Commercial
West	TOC	TOC

**C. Current and proposed zoning for the amendment site and adjacent areas.**

	<b>Existing Zoning</b>	<b>Proposed Zoning</b>
Amendment Site	PUD	PUD
North	CF-1,S-1,PUD	No change
East	PUD	No change
South	TOC-C,M-1A	No change
West	TOC-C	No change

The flexibility provisions of the Broward County Land Use Plan have not been used to rezone adjacent areas.

**D. Existing use of amendment site and adjacent areas.**

	<b>Existing Use</b>
Amendment Site	Multi-family (proposed)
North	Water storage tank facility; City park
East	Residential condos
South	Commercial building and Industrial warehouses
West	Commercial retail

**E. Proposed use of amendment site, including square footage and/or dwelling unit count proposed for each parcel.**

The proposed use of the subject property is 534 multi-family units.

**F. Proposed site plan and any other available special studies or information.**

A site plan is attached showing the proposed development of phase one of the proposed developments, consisting of 282 multifamily units. The proposed phase two site plan consists of 252 multifamily units. An additional 46 units for future phase.

**G. Maximum allowable development under existing designation for the site.**

The maximum allowable development under the R20 Residential designation is 580 multifamily residential units.

**H. Maximum allowable development under proposed designation for the site.**

The maximum allowable development for the subject property under the R20 Residential designation is 580 residential units.

**6. PROJECT DENSITY AND POPULATION**

The current site plan for phase one of the proposed development consists of 282 multifamily units and 252 multifamily units in phase two and the total allowable development on the subject property is 580 residential units. The total gross acreage is 30.18 acres. The total gross density is 19.21 units per acre. The projected population is 1.8 persons per unit for a total of 1044 persons for the entire PUD.

**A. Population Projections**

**1. Population Projections for the 10 year planning horizon (indicate year)**

The City of Margate projected population for the year 2025 is 67,589.

**2. Population projections resulting from this development.**

At a rate of 1.8 persons per household, there will be approximately 1044 persons residing in this development based on a total allowable development of 580 residential units. .

**7. PROPOSED COMMERCIAL USAGE**

The PUD is residential only and does not include any commercial usage.

**8. PLAN FOR CIRCULATION, STREETS AND PARKING**

The site plan for phase one of the site is shown on Exhibit J. The current site plan consists of a main entrance from State Road 7 with a gated entrance off of

Celebration Pointe Blvd. The site has been designed to meet emergency vehicle access and circulation. The parking requirements are as follows:

**Parking requirements phase one:**

Required parking for multi-family units is 2 spaces per apartment unit plus 1 space for every 5 units for guest parking.

$282 \text{ units} \times 2 = 564 \text{ parking spaces}$

$282 \text{ units} / 5 = 56.4 \text{ parking spaces}$

Total required: 621 spaces.

Parking provided:

54 garage units with 1 car garages = 54 garage parking stalls.

497 exterior parking spaces including driveways (dependent upon final site plan)

Total provided 551 spaces (dependent upon final site plan)

A variance was approved by the City Commission on 8/27/2008 BA-19-2008 allowed for 409 surface parking stalls in lieu of the 621 spaces.

**Parking requirements phase two:**

Required parking for multi-family units is 2 spaces per apartment unit plus 1 space for every 5 units for guest parking.

$252 \text{ units} \times 2 = 504 \text{ parking spaces}$

$252 \text{ units} / 5 = 50.4 \text{ parking spaces}$

Total required: 554 spaces.

Parking provided:

184 garage units with 1 car garages = 184 garage parking stalls.

375 exterior parking spaces including driveways (dependent upon final site plan)

Total provided 559 spaces (dependent upon final site plan)

General or guest parking stalls will be 9' wide by 18' deep for phase one and phase two will be 9' wide by 16' deep with a 7' deep sidewalk allowing car overhang on the sidewalk. All parking will be either 90 degree marking stalls or parallel parking stalls. Handicap stalls will meet ADA requirements. Common area parking stalls will be asphalt pavement. Parking stall associated with driveways in front of units will not be striped. Parking must be in designated parking areas. Parking behind garages for garage resident only. No parking will be allowed in street. The garage unit spaces shall be to resident families with a minimum of two cars and the garage and driveway must be used by them for vehicular parking. This will be enforced by the rental manager.

**Street design:**

The streets will be a minimum of 24' wide with two 12-foot wide travel lanes. The streets will meet the minimum design standards. The pavement design will be incorporated into the final engineering design of 1-1/2" asphalt, 8" rock base and 12" stabilized sub-grade except where brick pavers are shown on the site plan. All interior streets will be posted 25 miles per hour speed limit.

**Pedestrian circulation:**

A minimum of a 4' wide sidewalk is located on at least one side of the internal streets and will connect to the sidewalk on State Road 7 for mass transit or access to adjacent activities. The sidewalk will provide direct access for all residents to the recreation facilities provided within the PUD.

**9. PLAN FOR OPEN SPACE AND RECREATION FACILITY**

The site meets the minimum code requirement of 35% open space. The following is the table for open space requirements:

**Open Space Requirements:**

Gross acreage 29.70 acres.

Required Open Space is 35% or 10.39 acres.

Provided open space:

Recreation facility is 0.87 acres count 50% toward open space or 0.44 acres.

Lake: 4.68 acres count 50% toward open space or 2.34 acres

Green area including buffers and yards 7.63 acres count 100%

Total open space provided: 10.39 acres or 35%

## **10. PROVISIONS FOR MUNICIPAL AND PUBLIC SERVICES**

The required municipal and public services, including fire and police protection, will be available to Celebration Pointe. The entrance gates will be equipped with emergency access apparatuses such as Knox box and siren activated gates to allow immediate access for police, fire and ambulances.

Fire Hydrants will be installed in accordance with the City of Margate Code requirements. Health Care facilities are located within the City for expedient service. Other municipal services such as libraries and regional parks are available within reasonable proximity to the property.

## **11. PROVISIONS FOR WATER, SEWER AND UTILITIES SERVICES**

### **A. Sanitary Sewer Analysis**

- 1. Identify the adopted level of service standard for the service area in which the amendment is located and the current level of service.**

The subject property is located in the City of Margate utilities service area. The adopted level of service (LOS) is based upon population calculated according to bedroom mix: 3.5 persons per 3-bedroom, 2.5 persons per 2-bedroom, and 1 person per 1-bedroom unit. Each person uses 100 GPD.

- 2. Identify the sanitary sewer facilities serving the service area in which the amendment is located, including the plant capacity, current demand on plant capacity, and committed plant capacity.**

The property is served by the City of Margate Wastewater Treatment Plant located on N.W. 66<sup>th</sup> Avenue in the City of Margate. The current plant capacity is 10.1 MGD. The current demand is 7.50 MGD. Committed capacity of 7.50 MGD. The City maintains a wastewater collection system within the City's utilities service area, in which the subject property is located. No septic tanks exist or are proposed to serve the amendment site.

- 3. Identify the additional sanitary sewer demand resulting from this amendment.**

Sanitary sewer demand based on existing Land Use Plan designation (412 townhomes):

$$412 \text{ units} \times 1 \text{ ERC/unit} \times 335 \text{ gal/ERC} = 138,020 \text{ GPD}$$

Sanitary sewer demand based on proposed Land Use Plan designation (580 multifamily units):  $580 \text{ units} \times 0.66 \text{ ERC/unit} \times 335 \text{ gal/ERC} = 128,238 \text{ GPD}$

The adjusted sanitary sewer demand resulting from this amendment is:  $138,020 \text{ GPD} - 128,238 \text{ GPD} = -9,782 \text{ GPD}$  or .01 MGD decrease demand.

- 4. Identify the projected plant capacity and demand for the short and long range planning horizons as identified within the adopted comprehensive plan.**

According to the City of Margate Comprehensive Plan, the projected plant capacity is 10.1 MGD and the projected average daily flow is 7.5 MGD. Thus, the City of Margate will have adequate wastewater treatment plant capacity to serve future demand, including the proposed development of the subject property. Since the City of Margate is nearing complete build out, the current plant capacities provide for short and long term projections for future demands.

- 5. Provide information regarding the existing and proposed trunk lines and lateral hookups to the amendment site.**

An existing 10" sanitary force main is located in State Road 7 right-of-way adjacent to the subject property. The existing lift station has been removed and a new public lift station has been installed to service the entire Celebration Pointe project.

## **B. Potable Water Analysis**

- 1. Provide the adopted level of service for the service area in which the amendment is located and the current level of service.**

The subject property is located in the City of Margate utilities service area. The adopted level of service (LOS) is based upon population calculated according to bedroom mix: 3.5 persons per 3-bedroom, 2.5 persons per 2-bedroom, and 1 person per 1-bedroom. Each person uses 100 GPD.

- 2. Identify the potable water facilities serving the service area in which the amendment is located, including the plant capacity, current and committed demand on the plant and the South Florida Water Management District (SFWMD) permitted withdrawal.**

The site is located in the Margate utilities service area, and service to this site is provided by the City of Margate Water Treatment Plant. The plant has a rated capacity of 20 MGD and a current average demand of 10.0 MGD. The SFWMD permitted capacity is 3,396 Million gallons per year and 313.9 Million gallons per month.

- 3. Identify the well field serving the service area in which the amendment is located, including the permitted capacity, committed capacity, remaining capacity, and expiration date of the permit.**

Twelve (12) raw water wells serve the City of Margate. These raw water wells have a capacity of 24 MGD. The expiration for the Broward County water withdrawal permit is November, 2016. The permit is renewed every year.

**4. Identify the additional potable water demand resulting from this amendment.**

Potable water demand based on existing Land Use Plan designation:  
 $412 \text{ units} \times 1 \text{ ERC/unit} \times 335 \text{ gal/ERC} = 138,020 \text{ GPD}$

Potable water demand based on proposed Land Use Plan designation (580 multifamily units):  $580 \text{ units} \times 0.66 \text{ ERC/unit} \times 335 \text{ gal/ERC} = 128,238 \text{ GPD}$

The adjusted potable water demand resulting from this amendment is:  
 $138,020 \text{ GPD} (-) 128,238 \text{ GPD} = (-)9,782 \text{ GPD}$  or .01 MGD decrease demand.

**5. Identify the projected or planned capacity and demand for the short and long range planning horizons as included within the adopted comprehensive plan.**

The average daily demand (currently 10.0 MGD) is projected to increase to 16.6 MGD by 2014. There is no planned expansion for the water treatment facilities at this time.

**6. Provide information regarding the existing and planned service to the site – provide information regarding the existing and proposed trunk lines and water main hookups to the amendment site.**

An 8" water main currently services the property from State Road 7. The proposed development will provide an internal loop water main system connecting to the existing water main supply to the property.

**C. Solid Waste**

**1. Provide the adopted level of service (LOS) standard for the service area in which the amendment is located and the current level of service.**

The adopted LOS for the service area is 8.9 pounds per Dwelling Unit ("DU") per day.

**2. Identify the solid waste facilities serving the service area in which the amendment is located including the landfill/plant capacity, current demand on landfill/plant capacity and committed landfill/plant capacity.**

The solid waste generated in the City of Margate is accommodated by the Broward County resource recovery plants and sanitary landfills. The

current and projected landfill capacity is sufficient to meet county-wide demand for the next fifteen (15) years.

3. **Identify the additional demand resulting from this amendment - provide calculations including assumed demand per square foot or dwelling unit.**

The change in demand resulting from the proposed amendment is as follows:

Existing property Use: 255 DU's x 8.9lbs = 2,269.5 lbs

Proposed property Use: 580 DU's x 8.9 lbs = 5,162 lbs

The adjusted demand resulting from this amendment is:

2,269.5 lbs (-) 5,162 lbs = 2,892.5 lbs greater demand

#### **D. Recreation and Open Space Analysis**

1. **Provide the adopted level of service standard for the service area in which the amendment is located and the current level of service.**

The adopted LOS for local public recreation sites in the City of Margate is 3 acres per 1000 population. The City currently provides 4.2 acres of park land per 1000 population.

2. **Identify the parks serving the service area in which the amendment is located including acreage and facility type e.g. neighborhood, community or regional park.**

The City of Margate has a total of 19 public parks which contain approximately 105 acres. The park system includes 5 community parks, 6 neighborhood parks and 8 mini parks. Private non-commercial parks contain approximately 53 acres. Four golf courses are located in the City, two with 18 holes and 2 with 9 holes.

There are no Broward County regional parks located in the City of Margate. Regional park facilities serving the City include Quiet Waters Park, Tradewinds Park and Fern Forest Park.

3. **Quantify the change in need for park acreage resulting from this amendment.**

The change in demand resulting from the proposed amendment is as follows:

Existing property Use:  $255 \times 1.8 \text{ persons/DU} @ 3 \text{ acres/1000} = 1.37 \text{ acres}$

Proposed property Use:  $580 \text{ Multifamily units} \times 1.8 \text{ persons/DU} @ 3 \text{ acres/1000} = 3.13 \text{ acres}$

The adjusted demand resulting from this amendment is:  
 $1.37 \text{ acres} (-) 3.13 \text{ acres} = 1.76 \text{ acres more demand}$

The proposed development will also have on-site recreational amenities. In addition, the developer will comply with applicable City and County park impact fee requirements fees. The project is phased into two parcels. The developer will pay for the phase one city park impact fees of 282 units minus the original 255 units. Phase two will pay for the remaining 252 units at the time the permits are issued for construction.

- 4. Identify the projected park needs for the short and long range planning horizons as identified within the adopted comprehensive plan - provide need projections and information regarding planned capacity expansions including year, identified funding sources and other relevant information.**

Based on the City of Margate's projected population in 2025 of 67,589, sufficient park acreage will exist in 2015 (234 acres) to meet the applicable park LOS demand in 2025 (203 acres).

## **12. PUBLIC EDUCATION ANALYSIS**

- A. Identify the existing public elementary and secondary education facilities serving the area in which the amendment is located.**

The amendment site is served by Liberty Elementary School, Margate Middle School, and Monarch High School.

- B. Identify the existing school enrollment and permanent design capacity of the public elementary and secondary education facilities serving the area.**

School	LOS Capacity	Adjusted 2015/16 20 <sup>th</sup> day enrollment	Over/Under Adj. 20th Day Enrollment	Gross capacity
Liberty Elementary	1,260	951	-309	1282
Margate Middle	1379	1308	71	1328
Monarch High	2,335	2122	-213	2,360

- C. Identify the additional student demand resulting from this amendment - calculations should be based on applicable generation rates specified in the Broward County Land Development Code.**

The proposed development of 122 three-bedroom multi-family, 362 two-bedroom multi-family and 96 1-bedroom multifamily units will generate 92 (54 elementary, 23 middle, 30 high school) students according to current Broward County public school student generation rates. Sufficient capacity exists in the public schools to support the proposed development.

- D. Identify the Planned and/or funded improvements to serve the area in which the amendment is located as included within the School Board's five year capital plan - provide student demand projections and information regarding planned permanent design capacities and other relevant information.**

None.

- E. Identify other public elementary and secondary school sites or alternatives (such as site improvements, nominal fee lease options, shared use of public space for school purposes etc.), not identified in Item #4 above, to serve the area in which the amendment is located.**

Not applicable.

### **13. DRAINAGE ANALYSIS**

- 1. Provide the adopted level of service standard for the service area in which the amendment is located.**

#### **Road Protection:**

Residential streets not greater than fifty (50) feet to have crown elevations no lower than the elevation for the respective area depicted on the ten year "Flood Criteria Map".

Rights-of-way greater than fifty (50) feet wide to have an ultimate edge of pavement no lower than the elevation for the respective area depicted on the "Flood Criteria Map".

#### **Buildings:**

To have the lowest floor elevation no lower than the elevation for the respective area depicted in the "100 Year Flood Elevation Map". Per City code to be 18" above 100-year flood stage.

#### **Off Site Discharge:**

Not to exceed the inflow limit of SFWMD primary receiving canal or the local conveyance system, whichever is less.

#### **Storm Sewers:**

Design frequency minimum to be five year rainfall intensity off the State Department of Transportation Zone 10 Rainfall curves.

#### **Flood Plain Routing:**

Calculated flood elevations based on the ten year and one hundred year return frequency rainfall of three day duration shall not exceed the corresponding elevations of the ten year "Flood Criteria Map" and the "100 Year Flood Elevation Map".

#### **Antecedent Water Level:**

The higher elevation of either the control elevation or the elevation depicted on the map "Average Wet Season Water Levels".

#### **On Site Storage:**

Minimum capacity above antecedent water level and below flood plain routing elevations to be design rainfall volumes minus off site discharge occurring during design rainfall.

Best Management Practices (BMP):

Prior to discharge of surface or ground water, BMP's will be use to reduce pollutant discharge.

The developed area operates at the adopted LOS. Additional drainage improvements may be necessary to serve this development.

The subject property is currently vacant and has no current level of service. Any planned development will meet all City, State and local drainage district regulations.

**2. Identify the drainage facilities serving the service area in which the amendment is located.**

This property is located within the Cocomar Drainage District. The District criteria requires 15% of the property to be lake. The on-site lake will be maintained by the property owner.

**3. Identify any planned drainage improvements, including year, funding sources and other relevant information.**

The current drainage system provides adequate flood protection for the developed area. There are no improvements currently planned for the drainage system. The proposed development will comply with the fifteen percent on-site water area requirement as well as all other City, County and South Florida Water Management District regulations with regard to on-site drainage.

**4. Indicate if Environmental Resource Plan has been approved by, or an application submitted to, the SFWMD and/or any independent drainage district for the amendment site.**

**Identify the permit number(s) or application number(s) if the project is pending for the amendment site. If an amendment site is not required to obtain a SFWMD permit, provide documentation of same.**

The existing development has a drainage permit number 060442-S-26. This permit will be modified to match the proposed development.

**5. If the area in which the amendment is located does not meet the adopted level of service and there are no improvements planned to address the deficiencies, provide an engineering analysis which demonstrates how the site will be drained and the impact on the surrounding properties.**

The area meets the adopted LOS. The LOS will not change with this modification.

#### **14. CONSISTENCY WITH GOALS, OBJECTIVES AND POLICIES OF THE CITY OF MARGATE COMPREHENSIVE PLAN**

List of goals, objectives, and policies of the Future Land Use Element and other affected elements with which the proposed rezoning is compatible.

##### **Goal:**

Ensure that the character and location of land uses maximize the potential for economic benefit and the enjoyment of natural and man-made resources by Citizens while minimizing the threat to health, safety and welfare posed by hazards, nuisances, incompatible land uses, and environmental degradation.

##### **Policy 1.8**

Facilities and services shall be available concurrent with the impacts of development, while traffic circulation shall meet the level of service standards as specified within the adopted Transportation Element.

##### **Policy 1.10**

The city shall continue to implement procedures to identify the cumulative impacts of proposed development on public services and facilities before a development permit is issued.

##### **Policy 2.1**

The compatibility of existing and future land uses shall be a primary consideration in the review and approval of amendments to the Land Use Plan.

##### **Objective 4:**

The future development and redevelopment activities shall be directed to appropriate locations as designated on the Future Land Use Map, consistent with sound planning principles, natural limitations, and the goals, objectives, and policies contained within this plan, consistent with the requirements of §163.3202(1), F.S.

##### **Policy 7.2**

All proposed development shall be compatible with adjacent land uses.

##### **Policy 9.1**

Prior to approval of increases in density or intensity of land uses, there shall be a finding that existing public facilities and services are available to serve the needs of the proposed development.

## **Objective 11**

Discourage urban sprawl and encourage a separation of urban and rural land uses by directing new development into areas where necessary regional and community facilities and services exist.

### **A. CONSISTENCY WITH GOALS, OBJECTIVES AND POLICIES OF THE BROWARD COUNTY LAND USE PLAN**

List of objectives and policies of the Broward County land Use Plan with which the proposed rezoning is compatible.

**GOAL 01.00.00** PROVIDE RESIDENTIAL AREAS WITH A VARIETY OF HOUSING TYPES AND DENSITIES OFFERING CONVENIENT AND AFFORDABLE HOUSING OPPORTUNITIES TO ALL SEGMENTS OF BROWARD COUNTY'S POPULATION WHILE MAINTAINING A DESIRE QUALITY OF LIFE AND ADEQUATE PUBLIC SERVICES AND FACILITIES.

**OBJECTIVE 01.01.00** RESIDENTIAL DENSITIES AND PERMITTED USES IN RESIDENTIAL AREAS.

Accommodate the projected population of Broward County by providing adequate areas on the Future Broward County Land Use Plan May intended primarily for residential development, but which also permit those non-residential uses that are compatible with and necessary to support residential neighborhoods.

**OBJECTIVE 1.03.00** CORRELATION OF RESIDENTIAL DENSITIES WITH TRANSPORTATION FACILITIES

**POLICY 1.03.01** Residential densities in the Low to Medium ranges should be located with access to existing minor arterials and collector streets.

**GOAL 08.00.00** PHASE GROWTH CONSISTENT WITH THE PROVISION OF ADEQUATE REGIONAL AND COMMUNITY SERVICES AND FACILITIES.

**OBJECTIVE 08.01.00** COORDINATE FUTURE LAND USES WITH AVAILABILITY OF REGIONAL AND COMMUNITY FACILITIES AND SERVICES.

Coordinate future land uses with the availability of regional and community facilities and service sufficient to meet the current and future needs of Broward County's population and economy without endangering its environmental resources.

**POLICY 14.02.01**

The compatibility of existing and future land uses shall be a primary consideration in the review and approval of amendments to the Broward County and local land use plans.

**B. CONSISTENCY WITH THE STATE COMPREHENSIVE PLAN**

State Comprehensive Plan goals and with which the proposed rezoning is consistent.

**(16) LAND USE-**

**(a) Goal-**

In recognition of the importance of preserving the natural resources and enhancing the quality of life of the state, development shall be directed to those areas which have in place, or have agreements to provide, the land and water resources, fiscal abilities, and service capacity to accommodate growth in an environmentally acceptable manner.

**(b) Policies-**

Enhance the liveability and character of urban areas through the encouragement of an attractive and functional mix of living, working, shopping, and recreational activities.

**15. TRAFFIC CIRCULATION ANALYSIS**

**The concurrency and PUD approval for the project has been extended per Florida Senate Bill 1752 and House Bill 7207 and does not require a review of concurrency for this application.**

1. **Identify the roadways impacted by the proposed amendment and indicate the number of lanes, current traffic volumes, adopted LOS, and current LOS for each roadway.**

Exhibit F-1 shows the subject property and roadways that provide site access. Near site roadway segments are annotated with the laneage, volumes, and LOS information. Principal access is provided via US 441 / SR 7.

2. **Projected LOS for the roadways impacted by the proposed amendment for the short (2013) and long term (2030) planning horizons.**

Exhibit F-2 summarizes the existing roadway volume and level of service conditions on the roadways surrounding the site. Exhibit F-3 summarizes the short term traffic projections (2015) with and without project traffic. Exhibit F-4 summarizes the long term (2030) traffic projections with and without project traffic. The sources of the short term traffic projections are existing traffic counts and interpolated growth rate information based on future 2030 traffic volumes. The source of long term traffic projections is the Broward County FSUTMS 2030 Model supplied by the MPO.

3. **Traffic impact resulting from the amendment and resulting LOS change for short term (2013) and long term (2030) planning horizons.**

Exhibit F-5 summarizes the traffic generation potential for the proposed land use designation on a daily and p.m. peak hour basis. Exhibits F-3 and F-4 illustrate the project traffic assignment on the surrounding roadway network and the expected level of service for the short term (2015) and long term (2030) planning horizons. Although some of the roadways are projected to operate below Level of Service (LOS) D in the future, traffic associated with the proposed land use amendment is expected to be less than 3% of the LOS D service volume on these roadway segments. Additionally, these roadways are all expected to operate at the same level of service with or without traffic associated with the proposed amendment.

4. **Provide any special transportation studies relating to this amendment.**

Please see exhibit F for additional updated information by the traffic engineer.



**EXHIBIT F-2  
CELEBRATION POINTE  
EXISTING PEAK HOUR VOLUMES**

Roadway From To		# Lanes	2006 Peak Hour Volume (1)	Adopted LOS 'D' Peak Hour Volume (2)	Current LOS
<b><u>Sample Road</u></b>					
Rock Island Rd.	US 441 / SR 7	6LD	4,030	5,080	B
US 441 / SR 7	Lyons Rd.	6LD	5,000	5,080	D
<b><u>Royal Palm Boulevard</u></b>					
Rock Island Rd.	US 441 / SR 7	4LD	3,167	3,390	C
US 441 / SR 7	Lyons Rd.	4LD	3,735	3,390	F
<b><u>Coconut Creek Parkway</u></b>					
US 441 / SR 7	Lyons Rd.	4LD	2,382	2,950	D
<b><u>US 441 / SR 7</u></b>					
Wiles Rd.	Sample Rd.	6LD	3,820	5,080	B
Sample Rd.	Site Access	6LD	3,360	5,080	B
Site Access	Royal Palm Blvd.	6LD	4,200	5,080	B
Royal Palm Blvd.	Coconut Creek Pkwy.	6LD	4,330	5,080	C
Coconut Creek Pkwy.	Atlantic Blvd.	6LD	4,570	5,080	C

*Notes:*

(1) Based on Broward County 2006 Annual Average Peak Hour Traffic Counts

(2) Based on FDOT 2007 service volume tables from 2007 Quality/Level of Service white paper.

<div>EXHIBIT F-3</div> <div>CELEBRATION POINTE</div> <div>SHORT RANGE (2013) PEAK HOUR VOLUMES</div>									
Roadway From	To	Adopted LOS 'D' Peak Hour Volume	2013 Base Peak Hour Volume		Percent Project Assignment	Project Trips	Percent Impact	2013 Peak Hour Volume with Proposed Amendment	
			Volume (1)	LOS (2)				Volume (1)	LOS (2)
<u>Sample Road</u> Rock Island Rd. US 441 / SR 7	US 441 / SR 7 Lyons Rd.	5,080	4,254	C	15%	22	0.43%	4,276	C
		5,080	5,147	F	10%	15	0.30%	5,162	F
<u>Royal Palm Boulevard</u> Rock Island Rd. US 441 / SR 7	US 441 / SR 7 Lyons Rd.	3,390	3,152	C	15%	22	0.65%	3,174	C
		3,390	3,608	F	20%	29	0.86%	3,637	F
<u>Coconut Creek Parkway</u> US 441 / SR 7	Lyons Road	2,950	2,652	D	15%	22	0.75%	2,674	D
<u>US 441 / SR 7</u> Wiles Rd. Sample Rd. Site Access Royal Palm Blvd. Coconut Creek Pkwy.	Sample Rd. Site Access Royal Palm Blvd. Coconut Creek Pkwy. Atlantic Blvd.	5,080	3,991	B	15%	22	0.43%	4,013	B
		5,080	3,879	B	40%	58	1.14%	3,937	B
		5,080	4,474	C	60%	88	1.73%	4,562	C
		5,080	4,668	C	25%	37	0.73%	4,705	C
		5,080	4,798	C	10%	15	0.30%	4,813	C

Notes:

(1) 2013 volumes developed by interpolation between existing volumes and 2025 volumes.

(2) Based on FDOT 2007 service volume tables from 2007 Quality/Level of Service white paper.



Kimley-Horn  
and Associates, Inc.

EXHIBIT F-4 CELEBRATION POINTE LONG RANGE (2030) PEAK HOUR VOLUMES											
Roadway From To		Adopted LOS 'D' Daily Volume	FSUTMS Model AADT	k-factor	2030 Peak Hour Without Proposed Amendment		Percent Project Assignment	Project Trips	Percent Impact	2030 Peak Hour With Proposed Amendment	
					Volume (1)	LOS (2)				Volume (1)	LOS (2)
<u>Sample Road</u> Rock Island Rd. US 441 / SR 7	US 441 / SR 7 Lyons Rd.	5,080	59,000	8.13%	4,797	C	15%	22	0.43%	4,819	C
		5,080	67,700	8.13%	5,504	F	10%	15	0.30%	5,519	F
<u>Royal Palm Boulevard</u> Rock Island Rd. US 441 / SR 7	US 441 / SR 7 Lyons Rd.	3,390	38,300	8.13%	3,114	C	15%	22	0.65%	3,136	C
		3,390	40,600	8.13%	3,301	D	20%	29	0.86%	3,330	D
<u>Coconut Creek Parkway</u> US 441 / SR 7	Lyons Road	2,950	40,700	8.13%	3,309	F	15%	22	0.75%	3,331	F
<u>US 441 / SR 7</u> Wiles Rd. Sample Rd. Site Access Royal Palm Blvd. Royal Palm Blvd. Coconut Creek Pkwy. Coconut Creek Pkwy.	Sample Rd.	5,080	54,200	8.13%	4,406	C	15%	22	0.43%	4,428	C
	Site Access	5,080	63,200	8.13%	5,138	F	40%	58	1.14%	5,196	F
	Royal Palm Blvd.	5,080	63,200	8.13%	5,138	F	60%	88	1.73%	5,226	F
	Coconut Creek Pkwy.	5,080	67,500	8.13%	5,488	F	25%	37	0.73%	5,525	F
	Atlantic Blvd.	5,080	65,800	8.13%	5,350	F	10%	15	0.30%	5,365	F
Notes: (1) 2030 volumes developed by Broward County FSUTMS 2030 Model supplied by the MPO adjusted by a k-factor of 8.13 to determine peak hour conditions. (2) Based on FDOT 2007 service volume tables from 2007 QualityLevel of Service white paper.											

EXHIBIT F-5 CELEBRATION POINTE TRIP GENERATION				
Land Use	Intensity	PM Peak Hour		
		Total	In	Out
<b>Approved</b>				
Residential Townhouse/Condominiums	412 d.u.	214	143	71
<b>Total Approved</b>		<b>214</b>	<b>143</b>	<b>71</b>
<b>Proposed</b>				
Apartments	580 d.u.	360	234	126
<b>Total Proposed</b>		<b>360</b>	<b>234</b>	<b>126</b>
<b>Net Trip Increase</b>		<b>146</b>	<b>91</b>	<b>55</b>
Notes: Trip generation was calculated using the following data:				
PM Peak Hour Traffic Generation				
Residential Townhouse/Condominiums	[ITE 230]	=	T = 0.52 trips per d.u.; (67% in, 33% out)	
Apartments	[ITE 240]	=	T = 0.62 trips per d.u.; (65% in, 35% out)	



## G. Mass Transit Analysis

### 1. Identify the mass transit modes serving the amendment area.

Broward County Transit Route 18 and Route 441 which runs along State Road 7 serves the amendment site. The City of Margate also provides local transit service.

### 2. Identify the change in demand resulting from this amendment.

The amendment will increase demand on the transit system, however the current transit system has the capacity to adequately provide service for this amendment.

### 3. Identify the existing and planned mass transit routes and scheduled service (headway) for the amendment area.

Transit Route 18 and Route 441 currently serves the amendment site. No major route changes are planned for this area.

4. **Describe how the proposed amendment furthers or is consistent with the concept of a “transit-oriented development”.**

The proposed development has an internal pedestrian sidewalk system that provides pedestrian access from every unit to the public transit system located on State Road 7. Also, the property is conveniently located near commercial retail, industrial, hospitals and office space allowing for easy transit for the residence to work and shopping.

**16. DEDICATION OF LAND TO CITY, COUNTY AND STATE**

The PUD does not have frontage along State Road 7 or any other roadway. The developer will provide park and recreational impact fees to the City of Margate to obtain or enhance parks within the City limits.

**17. EXISTING ZONING WITHIN ONE MILE OF SITE**

	Existing Zoning	Proposed Zoning
Amendment Site	PUD	PUD
North	CF-1,S-1,PUD	No change
East	PUD	No change
South	TOC, M-1A	No change
West	TOC	No change

See Exhibit G for zoning one mile from site.

**18. DESCRIPTION OF PROPOSED PUD STANDARD FOR ALL STREETS AND LANDSCAPING**

**Proposed PUD Standards:**

- A. Streets and entrances will meet the standards as stated in section 7 of this report.
- B. Drainage will meet the standards as stated in section 12 of this report. A proposed lake will be constructed in each phase of the PUD. The lake will serve both drainage and open space recreational purposes. The drainage onsite and offsite system will be maintained by the drainage district a qualified contractor directed by an on-site property manager.
- C. Site lighting will be provided for the entire PUD to meet City Code requirements.

**D. Standards for building set backs are as follows:**

Minimum 25' from property line.

Minimum 20' between buildings excluding auxiliary buildings.

Minimum 5' front set back from curb to building.

Minimum rear yard set back 20' between buildings excluding auxiliary buildings.

Buildings will be three story with tile roofs. Construction of buildings will meet the City of Margate Code and Florida Building Code with current amendments requirements. All construction will meet Fire codes. Buildings will have fire sprinkler systems and will be designed to meet the necessary fire ratings. The buildings will be constructed with the highest construction standards and provide architecturally pleasing look that will be provided by the developer's architect.

**E. Landscaping standards:**

1. The landscaping will meet or exceed the City of Margate Code, Chapter 12-1/2 which pertains to minimum landscaping standards. The developer will provide additional accents at strategic locations within the PUD to enhance the overall beauty of the entire project. Where possible the shrubs and plantings will be design to enhance the scenic water view at the proposed lake.
2. Fill in missing wall sections on West side adjacent to commercial property. A 6' high chain link fence with a green button wood hedge will be installed along the remainder of the site to provide a pleasing barrier to the adjacent residential communities.
3. Additional landscaping will be provided along Celebration Pointe Blvd (phase 1). The developer and landscape architect will provide landscaping plans that meet or exceed the City Code in these areas.
4. Internal landscaping will be provide for street trees and building landscaping to provide a lush landscape feel to the roadways.
5. A variance has been obtained allowing a 10' perimeter landscape buffer.

#### **F. Traffic Control.**

The traffic control within the site will be to Broward County requirements by using signage and striping to control vehicles as well as pedestrian traffic.

#### **G. Unified control of PUD**

The PUD will be constructed by the developer and operated as a rental community. The future maintenance will be conducted by the property owner and operator. On-site property managers will be responsible for all maintenance activities.

#### **H. Typical unit allowances and restrictions**

1. The individual units cannot be modified in any way without approval of the property owner or association. No outside modifications can be made by the unit resident. The garages may not be enclosed for permanent living area. No screens can be installed beyond the building face. Roofs are made of tile. Interior improvements require local permits prior to construction.
2. Garbage will be provided in a compactor and picked up by waste management. Garbage and recycling is the residents' responsibility to dispose of in the garbage compactor and recycling area. This will be enforced by the property management.
3. See Exhibit N for additional building information.
4. No structural improvements will be allowed in common area easements. All landscape areas will be maintained by the property management maintenance personnel or contracted Maintenance Company. The rental resident is not responsible for common area maintenance.

### **19. THE PROPOSED ORDER OF DEVELOPMENT PHASES**

The development of the subject property will be done in two phases. The north phase (phase one) will be constructed first and then the south phase (phase two) will be constructed when market conditions are ready. A rental center may be constructed -as part of phase one. Construction of buildings will be in an orderly fashion to allow certificate of occupancies for each building as they are completed.

**20. PLANNING BOARD REQUIREMENTS**

The site will meet the PUD requirements and typical City Code requirements for residential development, subject to variances granted by the City for this project. There are no special planning board requirements for this project.

**21. LOCATION MAP WITH TWO MILE RADIUS OF MAJOR STREETS**

See Exhibit M

**22. BOUNDARY MAP**

See Exhibit I

**23. GENERAL CONCEPT PLAN**

See Exhibit J

**24. MASTER PLAN**

See Exhibit J

**25. UTILITIES PLAN**

See Exhibit K

**26. GRADING AND DRAINAGE PLAN**

See Exhibit K

**27. TYPICAL LANDSCAPE PLAN**

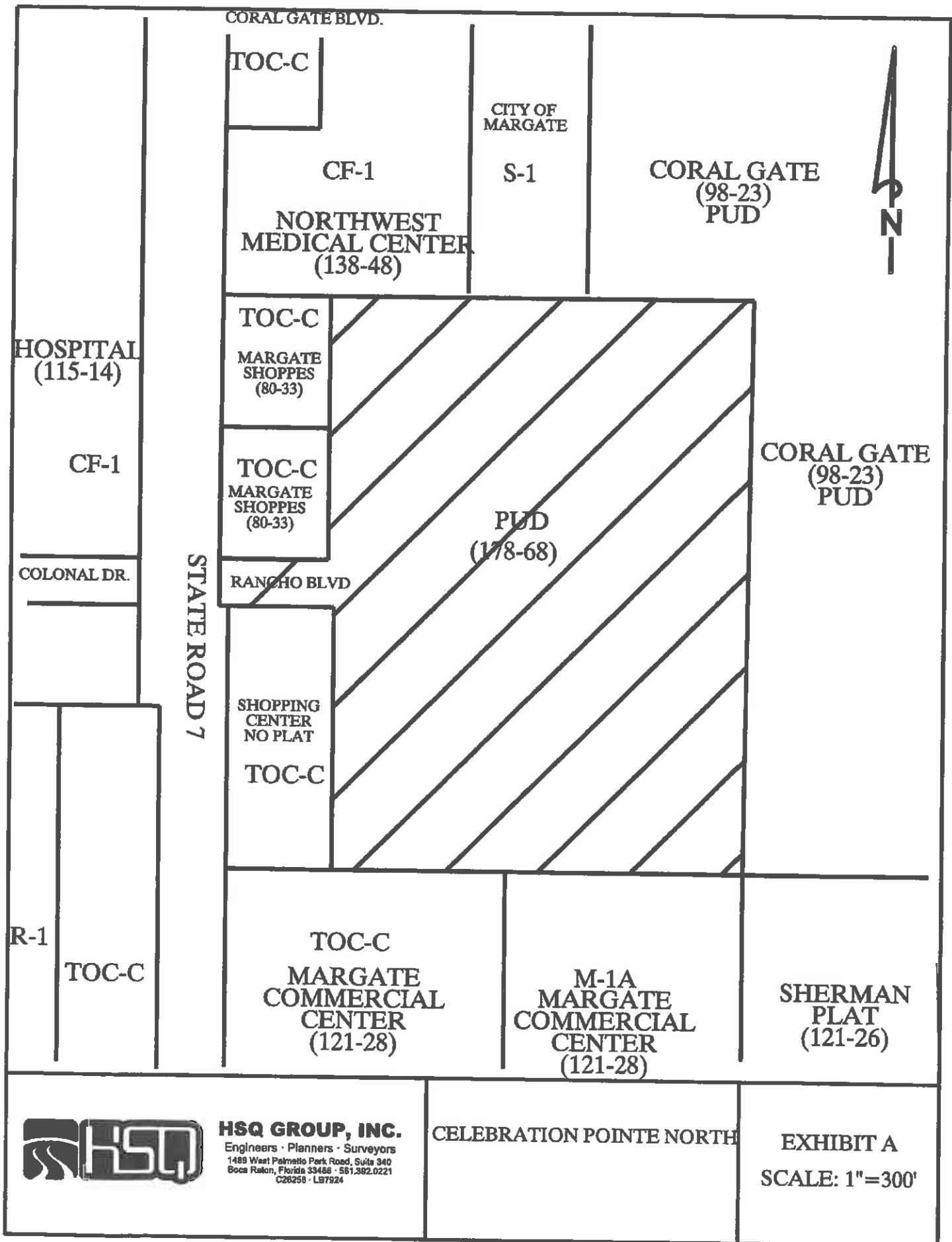
See Exhibit L

**28. TYPICAL RESIDENTIAL PLAN**

See Exhibits J and N

**29. ZONING STATEMENT**

The subject property is located on the east side of State Road 7 at Celebration Pointe Boulevard in the City of Margate. The subject property consists of approximately 29.50 acres. The proposed PUD modification is necessary due to the proposal of phase 2 (south half). Phase 2 is a multifamily project consisting of 252 luxury units. These units are larger in size and have different architecture to differentiate it from phase 1 buildings and product to avoid competition within the community. Each phase has its own entrance and are gated communities. The entire PUD has one entrance on State Road 7 with a common Boulevard to a roundabout with a water fountain. The phase 2 units are larger which resulted in less overall units possible within the development compared to phase 1. The remaining 46 units shall be used for a future phase.



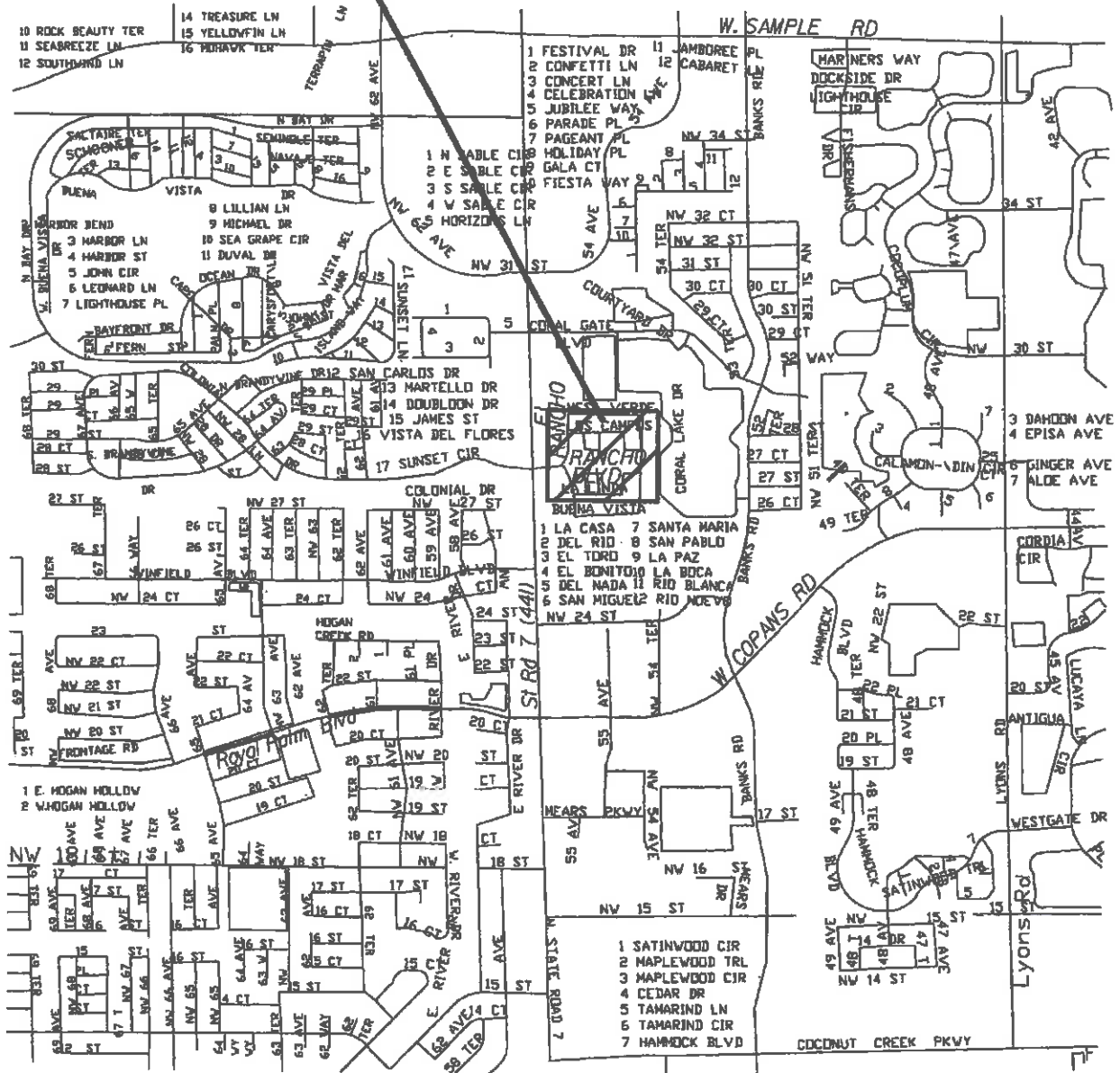
**HSQ GROUP, INC.**

Engineers · Planners · Surveyors  
 1489 West Palmetto Park Road, Suite 340  
 Boca Raton, Florida 33486 · 561.382.0221  
 C26258 · LB7924

CELEBRATION POINTE NORTH

EXHIBIT A  
 SCALE: 1"=300'

# PROJECT LOCATION



## LOCATION MAP

SECTION 20 / TOWNSHIP 48 S / RANGE 42 E



### HSQ GROUP, INC.

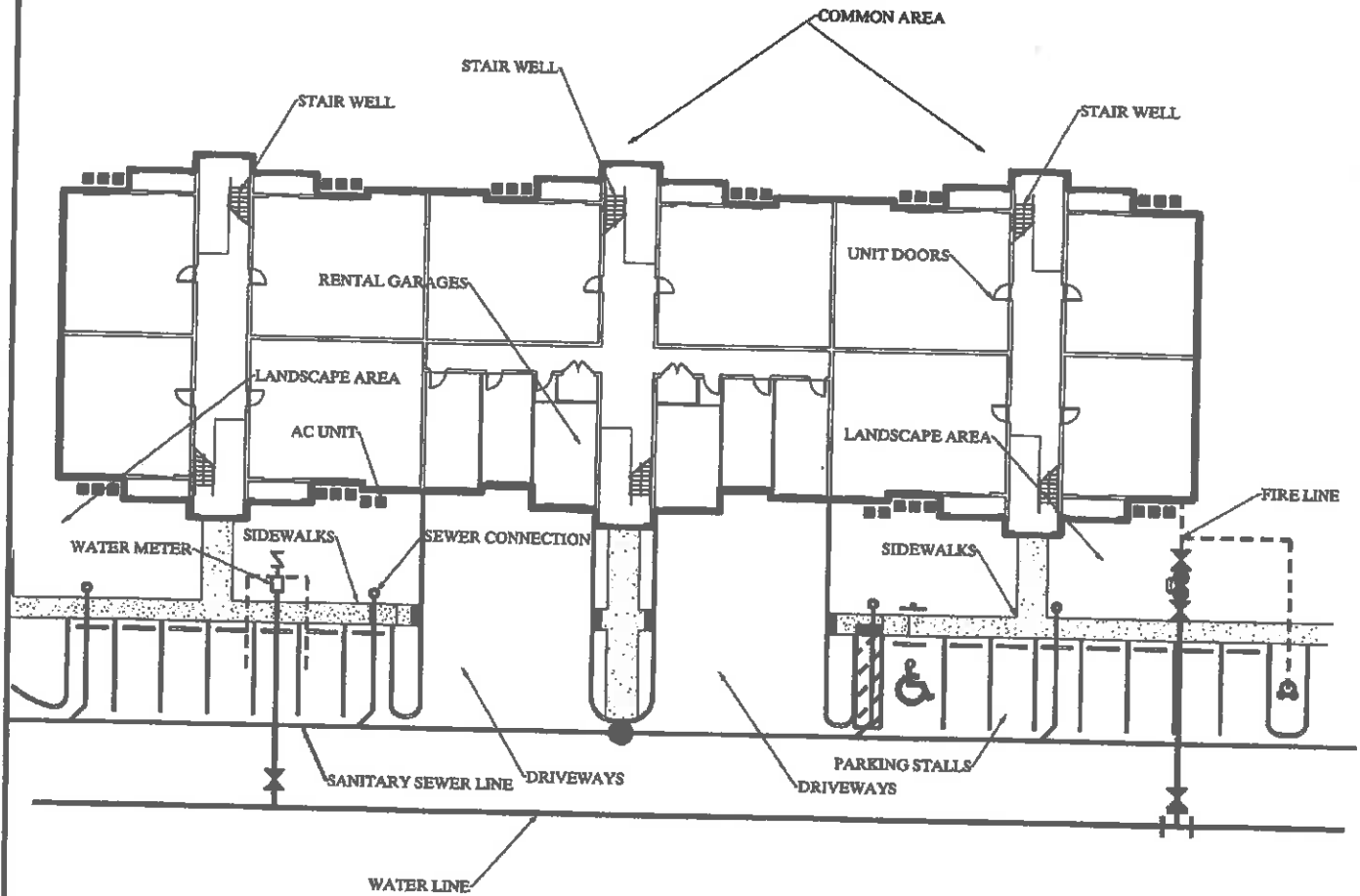
Engineers · Planners · Surveyors  
1489 West Palmatin Park Road, Suite 340  
Boca Raton, Florida 33486 · 561.392.0221  
C26258 · LB7924

CELEBRATION POINTE NORTH

EXHIBIT M

North

UNITS ARE RENTAL ONLY  
NO PRIVATE PROPERTY



TYPICAL GARAGE  
UNIT DETAIL

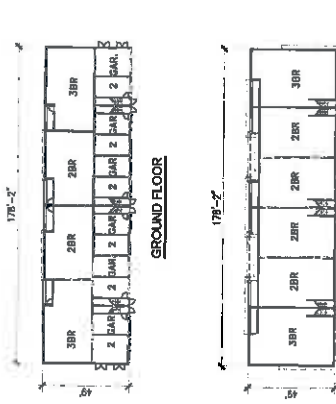


**HSQ GROUP, INC.**  
Engineers • Planners • Surveyors  
1489 West Palmto Park Road, Suite 340  
Boca Raton, Florida 33486 • 561.992.0221  
C28255 • LB7524

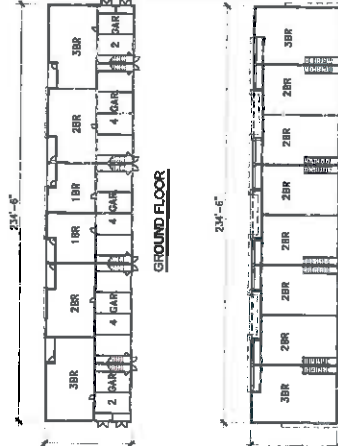
CELEBRATION POINTE NORTH

EXHIBIT N

# BUILDING TYPES

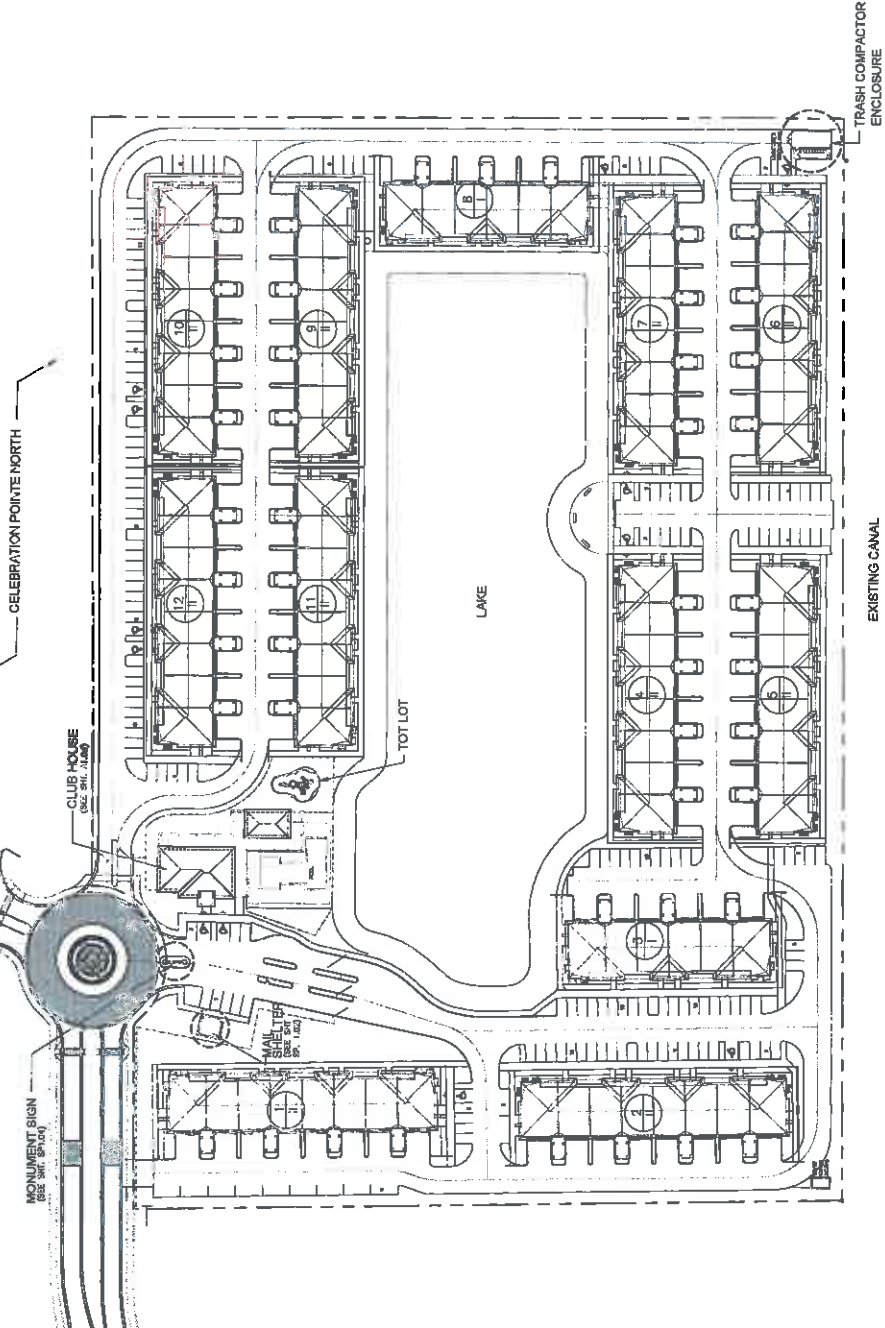


(2) TYPE I - (16-UNITS & 12-GARAGES) NTS



(10) TYPE II - (22-UNITS & 16-GARAGES) NTS

EXHIBIT  
SOUTH



**LEGEND**

REFERS TO BUILDING No.

REFERS TO BUILDING TYPE

**NOTE**

1. REFER TO CIVIC DRAWINGS FOR CALCULATIONS & DIMENSIONS

**SITE PLAN - 252 TOTAL UNITS**  
(TOTAL UNIT MAX 20-180/18TH, 160-20R28TH & 12-35R28TH)



SCALE: 1"=50'-0"

**Petersen & Flevig**  
ARCHITECTURE  
INTERIOR DESIGN  
PLANNING

10001 S.W. 133 STREET  
MIAMI, FLORIDA 33146  
PHONE: (305) 666-3000  
FAX: (305) 666-3002  
WWW.PETERSEN-FLORIDA.COM

CELEBRATION POINT SOUTH, LLC  
13445 S.W. 127TH AVENUE, MIAMI, FL 33186

**SITE PLAN - INTERNAL C.H. OPTION**

REVISIONS

NO.	DATE	DESCRIPTION
1	7-26-2015	FOR PERMITS

PROJECT NO. SP1.01  
DATE: 7-26-2015  
DRAWN BY: JLD  
CHECKED BY: JLD  
SCALE: AS NOTED  
SHEET NO. 1 OF 1

[illegible]

I HEREBY CERTIFY THAT THE SLURRY SPREAD HEREON MEETS THE STANDARDS OF PRACTICE CONTAINED IN CHAPTER 2014-147 OF THE FLORIDA ADMINISTRATIVE CODE PURSUANT TO SECTION 472.027, FLORIDA STATUTES.

ROGER C. BENT  
PRODUCTION, SURVEYOR AND MAPPER  
FLORIDA INFORMATION NO. 154280

PROJECT NUMBER	PROJECT SURVEY
4888-00	

**ON POINTE NORTH  
ARD COUNTY, FLORIDA**

EXHIBIT I

Region

[illegible]

\_\_\_\_\_

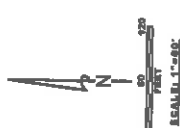
[illegible]

Q30	LN	DATE
Q31	WLB	01/14/02
Q32	WLB	01/03/00
Q33	WLB	01/03/01
Q34	WLB	01/03/01

EXHIBIT I

Region





**GENERAL NOTES:**

1. WATER SERVICE SHALL BE PROVIDED BY THE CITY OF MARGATE
2. SEWER SERVICE SHALL BE PROVIDED BY THE CITY OF MARGATE
3. ALL ADDRESSING AND MAILING PLATES SHALL BE PROVIDED BY THE CITY OF MARGATE
4. ALL UTILITIES SHALL BE SHOWN IN ACCORDANCE WITH THE CITY OF MARGATE

SITE DATA	
<b>LAND USE:</b> COMMERCIAL, RETAIL, OFFICE	<b>PROJECT NAME:</b> CELEBRATION POINTE NORTH
<b>NET SITE AREA:</b> 10.0 AC	<b>NET BUILDING AREA:</b> 100,000 SQ. FT.
<b>NET PAVED AREA:</b> 10.0 AC	<b>NET PARKING AREA:</b> 100,000 SQ. FT.
<b>NET GREEN SPACE:</b> 10.0 AC	<b>NET OPEN SPACE:</b> 100,000 SQ. FT.
<b>NET TOTAL AREA:</b> 10.0 AC	<b>NET TOTAL PAVED AREA:</b> 100,000 SQ. FT.
<b>NET TOTAL GREEN SPACE:</b> 10.0 AC	<b>NET TOTAL OPEN SPACE:</b> 100,000 SQ. FT.
<b>NET TOTAL PAVED AREA:</b> 100,000 SQ. FT.	<b>NET TOTAL OPEN SPACE:</b> 100,000 SQ. FT.
<b>NET TOTAL OPEN SPACE:</b> 100,000 SQ. FT.	<b>NET TOTAL PAVED AREA:</b> 100,000 SQ. FT.
<b>NET TOTAL PAVED AREA:</b> 100,000 SQ. FT.	<b>NET TOTAL OPEN SPACE:</b> 100,000 SQ. FT.
<b>NET TOTAL OPEN SPACE:</b> 100,000 SQ. FT.	<b>NET TOTAL PAVED AREA:</b> 100,000 SQ. FT.

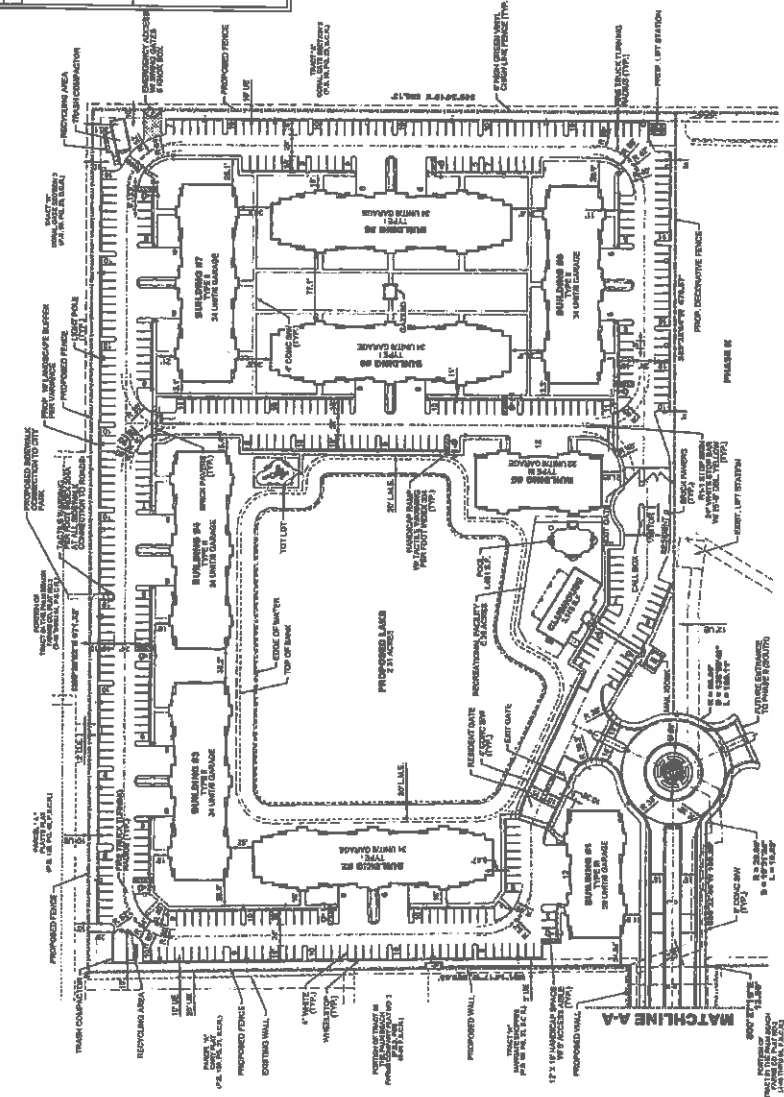


EXHIBIT J

NORTH

<b>CELEBRATION POINTE NORTH</b> SITE PLAN		PROJECT NUMBER 1305-28
<b>HSQ GROUP, INC.</b> Engineers - Planners - Surveyors 1440 West Poinsett Blvd., Suite 240 Fort Lauderdale, FL 33304 Phone: (954) 572-1234 Fax: (954) 572-1235		SHEET NUMBER SP-1
DESIGNED BY: JAL CHECKED BY: JAL DATE: 10/1/01	APPROVED BY: JAL DATE: 10/1/01	DATE: 10/1/01
REVISIONS 1. 10/1/01 JAL REVISIONS PER CITY COMMENTS		



**SCALE: 1"=50'**

	LOCKED
	LIGHT POLE
	PYL TOWER/CRAN
	HANGING RETAIL
	SIGN
	BRACK FIXTURE
	CONNECTIVE

### GENERAL NOTES:

1. WATER SERVICE WILL BE PROVIDED BY THE CITY OF MARGATE  
2. SEWER SERVICE WILL BE PROVIDED BY THE CITY OF MARGATE  
3. ALL ADDRESSES ARE MARGATE FLORIDA 32083 UNITS NUMBERS  
AND 11075 1ST FLOOR 2079 SECOND FLOOR 3079 3RD FLOOR

[illegible]

**CELEBRATION POINTE SOUTH**  
**SITE PLAN**

**HSQ GROUP, INC.**  
Engineers • Planners • Surveyors  
1488 West Pineda Park Road, Suite 340  
Esca Rancho, Florida 33468 • 601-392-0221  
C02658 • L18726



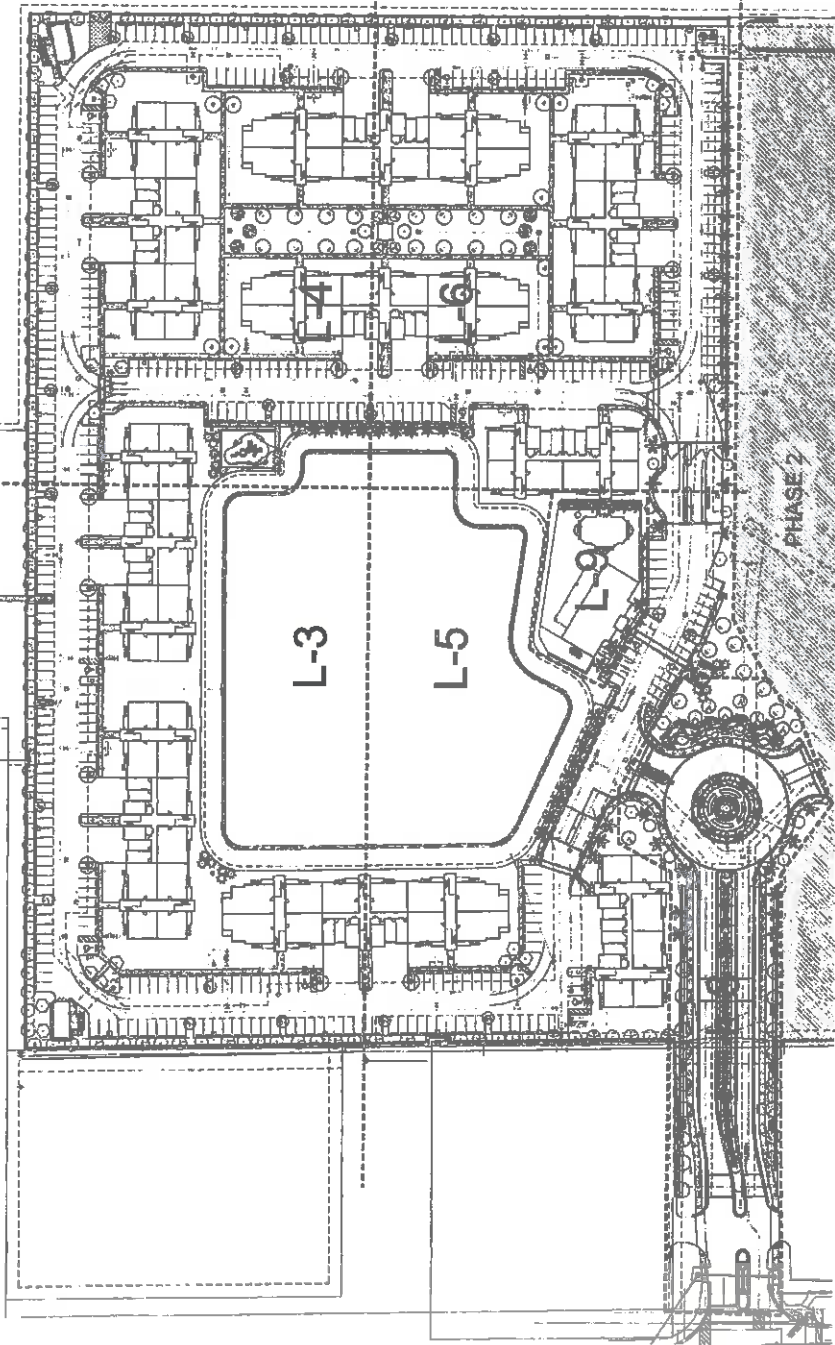
Designed by: <u>AM</u>	Date: <u>5/15</u>
Drawn by: <u>AM</u>	Date: <u>5/15</u>
Checked by: <u>AM</u>	Date: <u>5/15</u>

[illegible]

PLAN  
EXHIBIT J  
500TH



EXHIBIT K  
5005



**KEY PLAN**  
Scale: NTS

**LIST OF SHEETS**  
**INDEX**

- L-1 TREE DISPOSITION
- L-2 DISPOSITION LIST
- L-3 OVERALL LANDSCAPE
- L-4 OVERALL LANDSCAPE
- L-5 OVERALL LANDSCAPE
- L-6 OVERALL LANDSCAPE
- L-7 TYPICAL BUILDINGS
- L-8 ENTRY PLAN L-9 CLUBHOUSE PLAN
- L-10 PLANTING DETAILS

**NATIVE PLANTING MATERIAL REQUIREMENTS**

TREES-50% REQUIRED (1 TREE = 3 PALMS)	0% PROVIDED
SHRUBS-50% REQUIRED (INCLUDING UNITS)	51% PROVIDED

**LANDSCAPE DATA: SECTION 12 1027**

ITEM	QUANTITY	REMARKS
TREES (1" DBH) L-1, L-2, L-3, L-4, L-5, L-6, L-7, L-8, L-9, L-10	38	CONTINUOUS CONTINUOUS
TREES (1" DBH) L-1, L-2, L-3, L-4, L-5, L-6, L-7, L-8, L-9, L-10	38	CONTINUOUS CONTINUOUS
TOTAL	76	
TOTAL PLANTING AREA (SQ. FT.)	13,000	
TOTAL PLANTING AREA (SQ. YD.)	1,500	

**LANDSCAPE LIST**

ITEM	QUANTITY	REMARKS
1	38	CONTINUOUS CONTINUOUS
2	38	CONTINUOUS CONTINUOUS
3	38	CONTINUOUS CONTINUOUS
4	38	CONTINUOUS CONTINUOUS
5	38	CONTINUOUS CONTINUOUS
6	38	CONTINUOUS CONTINUOUS
7	38	CONTINUOUS CONTINUOUS
8	38	CONTINUOUS CONTINUOUS
9	38	CONTINUOUS CONTINUOUS
10	38	CONTINUOUS CONTINUOUS
11	38	CONTINUOUS CONTINUOUS
12	38	CONTINUOUS CONTINUOUS
13	38	CONTINUOUS CONTINUOUS
14	38	CONTINUOUS CONTINUOUS
15	38	CONTINUOUS CONTINUOUS
16	38	CONTINUOUS CONTINUOUS
17	38	CONTINUOUS CONTINUOUS
18	38	CONTINUOUS CONTINUOUS
19	38	CONTINUOUS CONTINUOUS
20	38	CONTINUOUS CONTINUOUS
21	38	CONTINUOUS CONTINUOUS
22	38	CONTINUOUS CONTINUOUS
23	38	CONTINUOUS CONTINUOUS
24	38	CONTINUOUS CONTINUOUS
25	38	CONTINUOUS CONTINUOUS
26	38	CONTINUOUS CONTINUOUS
27	38	CONTINUOUS CONTINUOUS
28	38	CONTINUOUS CONTINUOUS
29	38	CONTINUOUS CONTINUOUS
30	38	CONTINUOUS CONTINUOUS
31	38	CONTINUOUS CONTINUOUS
32	38	CONTINUOUS CONTINUOUS
33	38	CONTINUOUS CONTINUOUS
34	38	CONTINUOUS CONTINUOUS
35	38	CONTINUOUS CONTINUOUS
36	38	CONTINUOUS CONTINUOUS
37	38	CONTINUOUS CONTINUOUS
38	38	CONTINUOUS CONTINUOUS
39	38	CONTINUOUS CONTINUOUS
40	38	CONTINUOUS CONTINUOUS
41	38	CONTINUOUS CONTINUOUS
42	38	CONTINUOUS CONTINUOUS
43	38	CONTINUOUS CONTINUOUS
44	38	CONTINUOUS CONTINUOUS
45	38	CONTINUOUS CONTINUOUS
46	38	CONTINUOUS CONTINUOUS
47	38	CONTINUOUS CONTINUOUS
48	38	CONTINUOUS CONTINUOUS
49	38	CONTINUOUS CONTINUOUS
50	38	CONTINUOUS CONTINUOUS
51	38	CONTINUOUS CONTINUOUS
52	38	CONTINUOUS CONTINUOUS
53	38	CONTINUOUS CONTINUOUS
54	38	CONTINUOUS CONTINUOUS
55	38	CONTINUOUS CONTINUOUS
56	38	CONTINUOUS CONTINUOUS
57	38	CONTINUOUS CONTINUOUS
58	38	CONTINUOUS CONTINUOUS
59	38	CONTINUOUS CONTINUOUS
60	38	CONTINUOUS CONTINUOUS
61	38	CONTINUOUS CONTINUOUS
62	38	CONTINUOUS CONTINUOUS
63	38	CONTINUOUS CONTINUOUS
64	38	CONTINUOUS CONTINUOUS
65	38	CONTINUOUS CONTINUOUS
66	38	CONTINUOUS CONTINUOUS
67	38	CONTINUOUS CONTINUOUS
68	38	CONTINUOUS CONTINUOUS
69	38	CONTINUOUS CONTINUOUS
70	38	CONTINUOUS CONTINUOUS
71	38	CONTINUOUS CONTINUOUS
72	38	CONTINUOUS CONTINUOUS
73	38	CONTINUOUS CONTINUOUS
74	38	CONTINUOUS CONTINUOUS
75	38	CONTINUOUS CONTINUOUS
76	38	CONTINUOUS CONTINUOUS
77	38	CONTINUOUS CONTINUOUS
78	38	CONTINUOUS CONTINUOUS
79	38	CONTINUOUS CONTINUOUS
80	38	CONTINUOUS CONTINUOUS
81	38	CONTINUOUS CONTINUOUS
82	38	CONTINUOUS CONTINUOUS
83	38	CONTINUOUS CONTINUOUS
84	38	CONTINUOUS CONTINUOUS
85	38	CONTINUOUS CONTINUOUS
86	38	CONTINUOUS CONTINUOUS
87	38	CONTINUOUS CONTINUOUS
88	38	CONTINUOUS CONTINUOUS
89	38	CONTINUOUS CONTINUOUS
90	38	CONTINUOUS CONTINUOUS
91	38	CONTINUOUS CONTINUOUS
92	38	CONTINUOUS CONTINUOUS
93	38	CONTINUOUS CONTINUOUS
94	38	CONTINUOUS CONTINUOUS
95	38	CONTINUOUS CONTINUOUS
96	38	CONTINUOUS CONTINUOUS
97	38	CONTINUOUS CONTINUOUS
98	38	CONTINUOUS CONTINUOUS
99	38	CONTINUOUS CONTINUOUS
100	38	CONTINUOUS CONTINUOUS

**SHRUB AND GRASS COVERS**

ITEM	QUANTITY	REMARKS
1	38	CONTINUOUS CONTINUOUS
2	38	CONTINUOUS CONTINUOUS
3	38	CONTINUOUS CONTINUOUS
4	38	CONTINUOUS CONTINUOUS
5	38	CONTINUOUS CONTINUOUS
6	38	CONTINUOUS CONTINUOUS
7	38	CONTINUOUS CONTINUOUS
8	38	CONTINUOUS CONTINUOUS
9	38	CONTINUOUS CONTINUOUS
10	38	CONTINUOUS CONTINUOUS
11	38	CONTINUOUS CONTINUOUS
12	38	CONTINUOUS CONTINUOUS
13	38	CONTINUOUS CONTINUOUS
14	38	CONTINUOUS CONTINUOUS
15	38	CONTINUOUS CONTINUOUS
16	38	CONTINUOUS CONTINUOUS
17	38	CONTINUOUS CONTINUOUS
18	38	CONTINUOUS CONTINUOUS
19	38	CONTINUOUS CONTINUOUS
20	38	CONTINUOUS CONTINUOUS
21	38	CONTINUOUS CONTINUOUS
22	38	CONTINUOUS CONTINUOUS
23	38	CONTINUOUS CONTINUOUS
24	38	CONTINUOUS CONTINUOUS
25	38	CONTINUOUS CONTINUOUS
26	38	CONTINUOUS CONTINUOUS
27	38	CONTINUOUS CONTINUOUS
28	38	CONTINUOUS CONTINUOUS
29	38	CONTINUOUS CONTINUOUS
30	38	CONTINUOUS CONTINUOUS
31	38	CONTINUOUS CONTINUOUS
32	38	CONTINUOUS CONTINUOUS
33	38	CONTINUOUS CONTINUOUS
34	38	CONTINUOUS CONTINUOUS
35	38	CONTINUOUS CONTINUOUS
36	38	CONTINUOUS CONTINUOUS
37	38	CONTINUOUS CONTINUOUS
38	38	CONTINUOUS CONTINUOUS
39	38	CONTINUOUS CONTINUOUS
40	38	CONTINUOUS CONTINUOUS
41	38	CONTINUOUS CONTINUOUS
42	38	CONTINUOUS CONTINUOUS
43	38	CONTINUOUS CONTINUOUS
44	38	CONTINUOUS CONTINUOUS
45	38	CONTINUOUS CONTINUOUS
46	38	CONTINUOUS CONTINUOUS
47	38	CONTINUOUS CONTINUOUS
48	38	CONTINUOUS CONTINUOUS
49	38	CONTINUOUS CONTINUOUS
50	38	CONTINUOUS CONTINUOUS
51	38	CONTINUOUS CONTINUOUS
52	38	CONTINUOUS CONTINUOUS
53	38	CONTINUOUS CONTINUOUS
54	38	CONTINUOUS CONTINUOUS
55	38	CONTINUOUS CONTINUOUS
56	38	CONTINUOUS CONTINUOUS
57	38	CONTINUOUS CONTINUOUS
58	38	CONTINUOUS CONTINUOUS
59	38	CONTINUOUS CONTINUOUS
60	38	CONTINUOUS CONTINUOUS
61	38	CONTINUOUS CONTINUOUS
62	38	CONTINUOUS CONTINUOUS
63	38	CONTINUOUS CONTINUOUS
64	38	CONTINUOUS CONTINUOUS
65	38	CONTINUOUS CONTINUOUS
66	38	CONTINUOUS CONTINUOUS
67	38	CONTINUOUS CONTINUOUS
68	38	CONTINUOUS CONTINUOUS
69	38	CONTINUOUS CONTINUOUS
70	38	CONTINUOUS CONTINUOUS
71	38	CONTINUOUS CONTINUOUS
72	38	CONTINUOUS CONTINUOUS
73	38	CONTINUOUS CONTINUOUS
74	38	CONTINUOUS CONTINUOUS
75	38	CONTINUOUS CONTINUOUS
76	38	CONTINUOUS CONTINUOUS
77	38	CONTINUOUS CONTINUOUS
78	38	CONTINUOUS CONTINUOUS
79	38	CONTINUOUS CONTINUOUS
80	38	CONTINUOUS CONTINUOUS
81	38	CONTINUOUS CONTINUOUS
82	38	CONTINUOUS CONTINUOUS
83	38	CONTINUOUS CONTINUOUS
84	38	CONTINUOUS CONTINUOUS
85	38	CONTINUOUS CONTINUOUS
86	38	CONTINUOUS CONTINUOUS
87	38	CONTINUOUS CONTINUOUS
88	38	CONTINUOUS CONTINUOUS
89	38	CONTINUOUS CONTINUOUS
90	38	CONTINUOUS CONTINUOUS
91	38	CONTINUOUS CONTINUOUS
92	38	CONTINUOUS CONTINUOUS
93	38	CONTINUOUS CONTINUOUS
94	38	CONTINUOUS CONTINUOUS
95	38	CONTINUOUS CONTINUOUS
96	38	CONTINUOUS CONTINUOUS
97	38	CONTINUOUS CONTINUOUS
98	38	CONTINUOUS CONTINUOUS
99	38	CONTINUOUS CONTINUOUS
100	38	CONTINUOUS CONTINUOUS

NOT TO SCALE

**EXHIBIT L**  
**NORTH**

**WITKIN HULLS**  
DESIGN GROUP  
www.witkinhulls.com  
10000 W. 11th Ave., Suite 100  
Miami, FL 33156  
Phone: 305.555.1111  
Fax: 305.555.1112

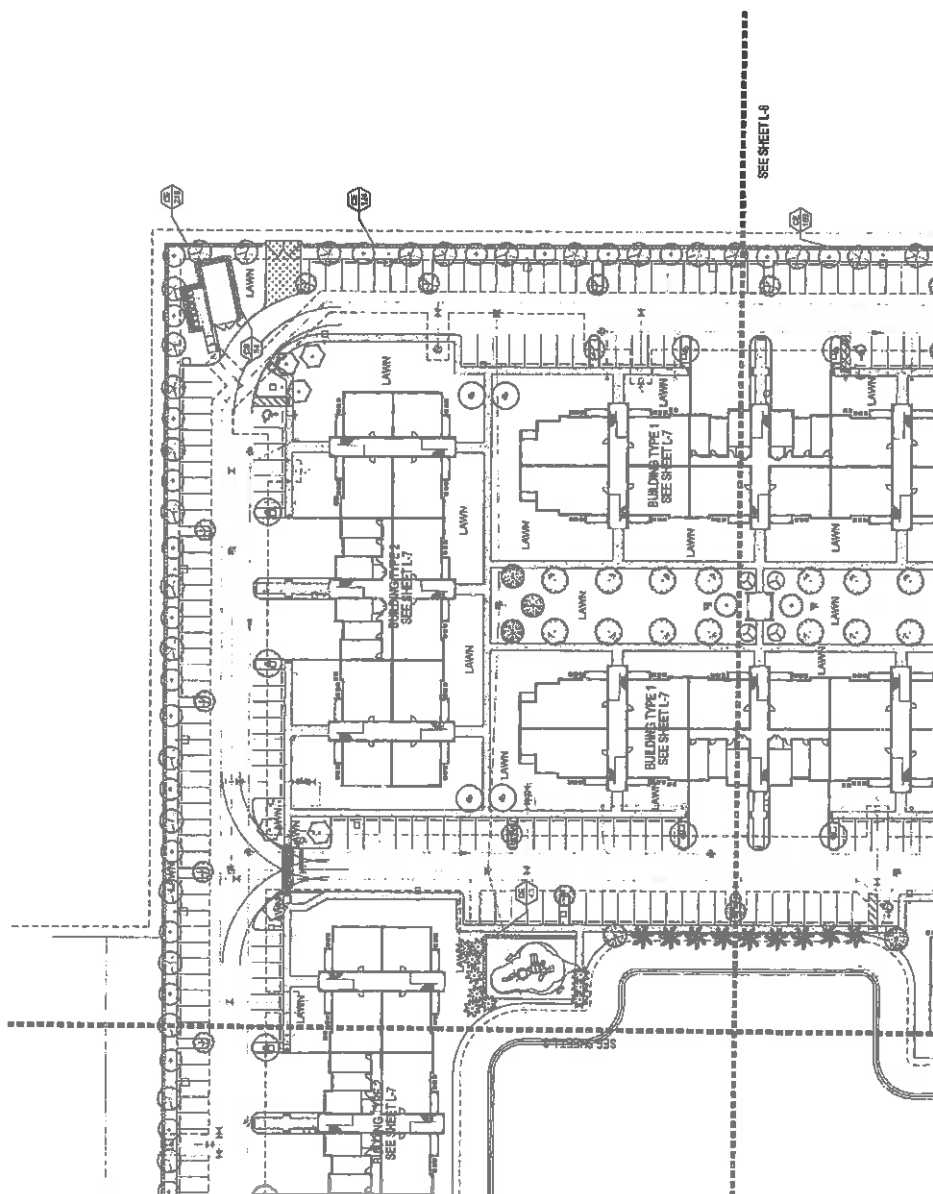
**INDEX**  
Margate, Florida  
**Celebration Pointe North**

**INDEX**  
WILMINGTON CITY COMMISSIONERS  
10000 W. 11th Ave., Suite 100  
Miami, FL 33156  
Phone: 305.555.1111  
Fax: 305.555.1112

**INDEX**  
WILMINGTON CITY COMMISSIONERS  
10000 W. 11th Ave., Suite 100  
Miami, FL 33156  
Phone: 305.555.1111  
Fax: 305.555.1112

**INDEX**  
WILMINGTON CITY COMMISSIONERS  
10000 W. 11th Ave., Suite 100  
Miami, FL 33156  
Phone: 305.555.1111  
Fax: 305.555.1112



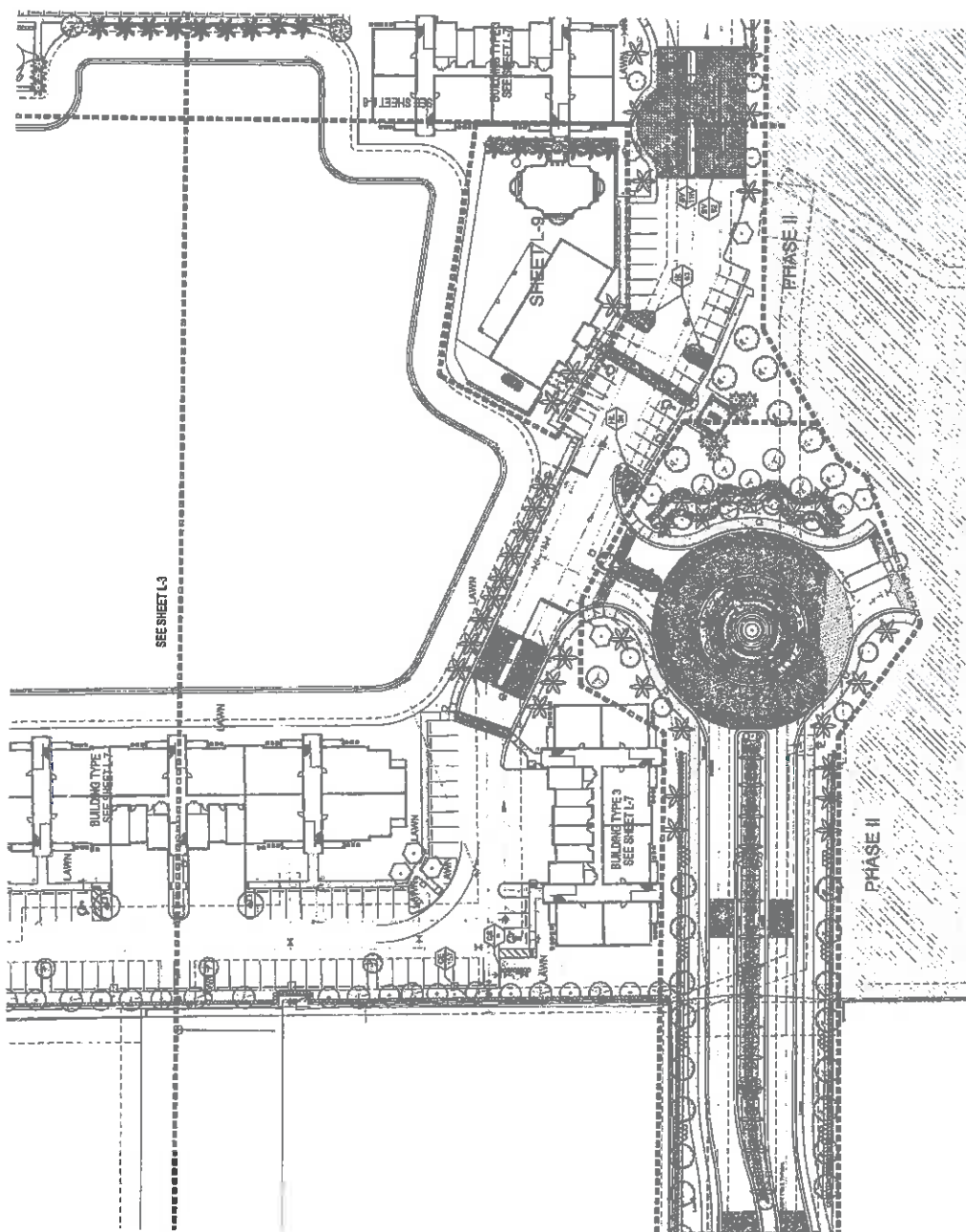


**LANDSCAPE PLAN**  
Scale: 1"=30'-0"

LANDSCAPE LIST

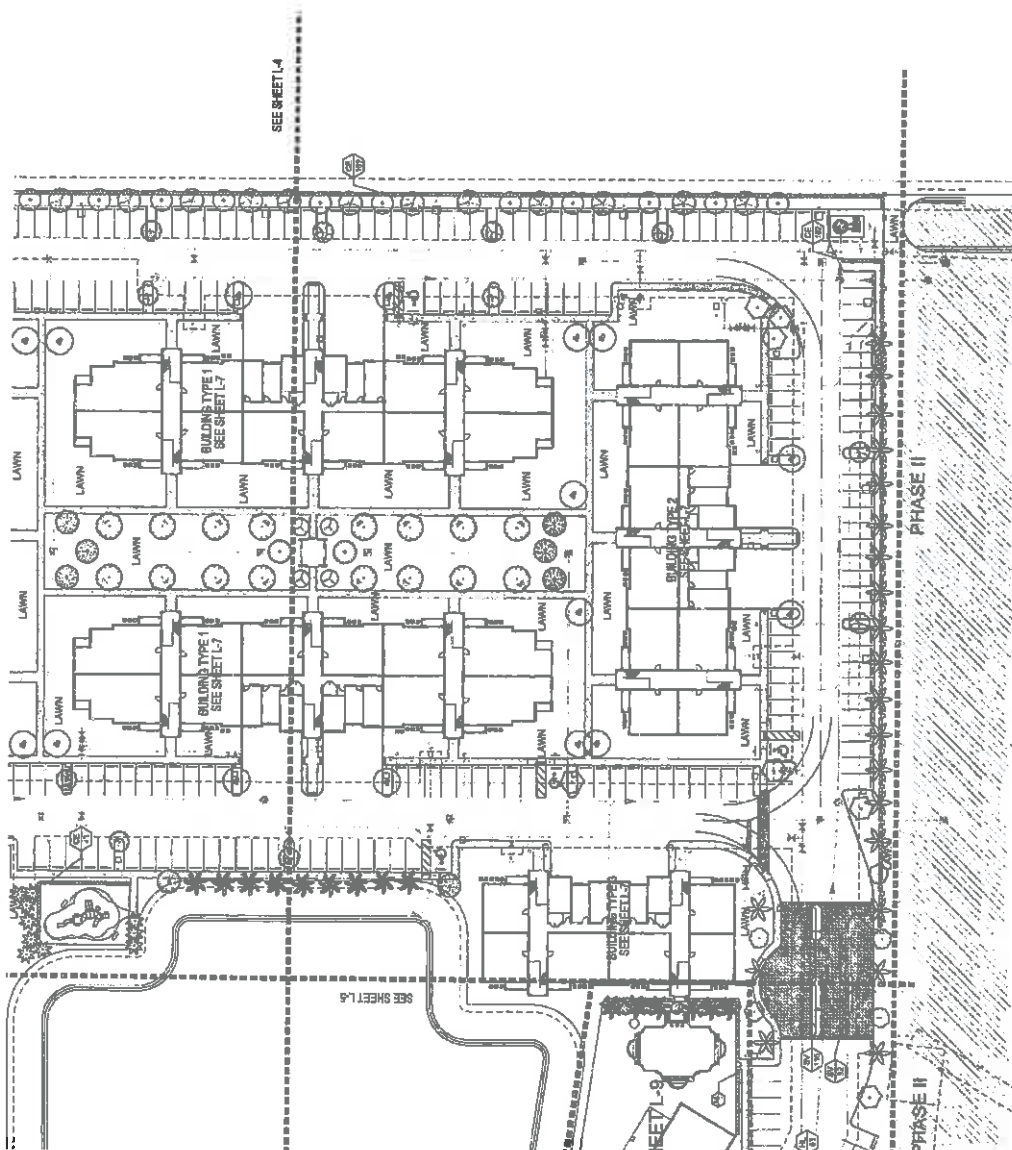
TREES

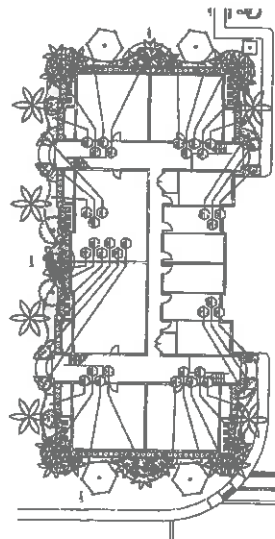
SL. NO.	SYMBOL	COMMON NAME	SCIENTIFIC NAME	PLANTING	REMARKS
1	1	1	1	1	1
2	2	2	2	2	2
3	3	3	3	3	3
4	4	4	4	4	4
5	5	5	5	5	5
6	6	6	6	6	6
7	7	7	7	7	7
8	8	8	8	8	8
9	9	9	9	9	9
10	10	10	10	10	10
11	11	11	11	11	11
12	12	12	12	12	12
13	13	13	13	13	13
14	14	14	14	14	14
15	15	15	15	15	15
16	16	16	16	16	16
17	17	17	17	17	17
18	18	18	18	18	18
19	19	19	19	19	19
20	20	20	20	20	20
21	21	21	21	21	21
22	22	22	22	22	22
23	23	23	23	23	23
24	24	24	24	24	24
25	25	25	25	25	25
26	26	26	26	26	26
27	27	27	27	27	27
28	28	28	28	28	28
29	29	29	29	29	29
30	30	30	30	30	30
31	31	31	31	31	31
32	32	32	32	32	32
33	33	33	33	33	33
34	34	34	34	34	34
35	35	35	35	35	35
36	36	36	36	36	36
37	37	37	37	37	37
38	38	38	38	38	38
39	39	39	39	39	39
40	40	40	40	40	40
41	41	41	41	41	41
42	42	42	42	42	42
43	43	43	43	43	43
44	44	44	44	44	44
45	45	45	45	45	45
46	46	46	46	46	46
47	47	47	47	47	47
48	48	48	48	48	48
49	49	49	49	49	49
50	50	50	50	50	50
51	51	51	51	51	51
52	52	52	52	52	52
53	53	53	53	53	53
54	54	54	54	54	54
55	55	55	55	55	55
56	56	56	56	56	56
57	57	57	57	57	57
58	58	58	58	58	58
59	59	59	59	59	59
60	60	60	60	60	60
61	61	61	61	61	61
62	62	62	62	62	62
63	63	63	63	63	63
64	64	64	64	64	64
65	65	65	65	65	65
66	66	66	66	66	66
67	67	67	67	67	67
68	68	68	68	68	68
69	69	69	69	69	69
70	70	70	70	70	70
71	71	71	71	71	71
72	72	72	72	72	72
73	73	73	73	73	73
74	74	74	74	74	74
75	75	75	75	75	75
76	76	76	76	76	76
77	77	77	77	77	77
78	78	78	78	78	78
79	79	79	79	79	79
80	80	80	80	80	80
81	81	81	81	81	81
82	82	82	82	82	82
83	83	83	83	83	83
84	84	84	84	84	84
85	85	85	85	85	85
86	86	86	86	86	86
87	87	87	87	87	87
88	88	88	88	88	88
89	89	89	89	89	89
90	90	90	90	90	90
91	91	91	91	91	91
92	92	92	92	92	92
93	93	93	93	93	93
94	94	94	94	94	94
95	95	95	95	95	95
96	96	96	96	96	96
97	97	97	97	97	97
98	98	98	98	98	98
99	99	99	99	99	99
100	100	100	100	100	100
101	101	101	101	101	101
102	102	102	102	102	102
103	103	103	103	103	103
104	104	104	104	104	104
105	105	105	105	105	105
106	106	106	106	106	106
107	107	107	107	107	107
108	108	108	108	108	108
109	109	109	109	109	109
110	110	110	110	110	110
111	111	111	111	111	111
112	112	112	112	112	112
113	113	113	113	113	113
114	114	114	114	114	114
115	115	115	115	115	115
116	116	116	116	116	116
117	117	117	117	117	117
118	118	118	118	118	118
119	119	119	119	119	119
120	120	120	120	120	120
121	121	121	121	121	121
122	122	122	122	122	122
123	123	123	123	123	123
124	124	124	124	124	124
125	125	125	125	125	125
126	126	126	126	126	126
127	127	127	127	127	127
128	128	128	128	128	128
129	129	129	129	129	129
130	130	130	130	130	130
131	131	131	131	131	131
132	132	132	132	132	132
133	133	133	133	133	133
134	134	134	134	134	134
135	135	135	135	135	135
136	136	136	136	136	136
137	137	137	137	137	137
138	138	138	138	138	138
139	139	139	139	139	139
140	140	140	140	140	140
141	141	141	141	141	141
142	142	142	142	142	142
143	143	143	143	143	143
144	144	144	144	144	144
145	145	145	145	145	145
146	146	146	146	146	146
147	147	147	147	147	147
148	148	148	148	148	148
149	149	149	149	149	149
150	150	150	150	150	150
151	151	151	151	151	151
152	152	152	152	152	152
153	153	153	153	153	153
154	154	154	154	154	154
155	155	155	155	155	155
156	156	156	156	156	156
157	157	157	157	157	157
158	158	158	158	158	158
159	159	159	159	159	159
160	160	160	160	160	160
161	161	161	161	161	161
162	162	162	162	162	162
163	163	163	163	163	163
164	164	164	164	164	164
165	165	165	165	165	165
166	166	166	166	166	166
167	167	167	167	167	167
168	168	168	168	168	168
169	169	169	169	169	169
170	170	170	170	170	170
171	171	171	171	171	171
172	172	172	172	172	172
173	173	173	173	173	173
174	174	174	174	174	174
175	175	175	175	175	175
176	176	176	176	176	176
177	177	177	177	177	177
178	178	178	178	178	178
179	179	179	179	179	179
180	180	180	180	180	180
181	181	181	181	181	181
182	182	182	182	182	182
183	183	183	183	183	183
184	184	184	184	184	184
185	185	185	185	185	185
186	186	186	186	186	186
187	187	187	187	187	187
188	188	188	188	188	188
189	189	189	189	189	189
190	190	190	190	190	190
191	191	191	191	191	191
192	192	192	192	192	192
193	193	193	193	193	193
194	194	194	194	194	194
195	195	195	195	195	195
196	196	196	196	196	196
197	197	197	197	197	197
198	198	198	198	198	198
199	199	199	199	199	199
200	200	200	200	200	200
201	201	201	201	201	201
202	202	202	202	202	202
203	203	203	203	203	203
204	204	204	204	204	204
205	205	205	205	205	205
206	206	206	206	206	206
207	207	207	207	207	207
208	208	208	208	208	208
209	209	209	209	209	209
210	210	210	210	210	210
211	211	211	211	211	211
212	212	212	212	212	212
213	213	213	213	213	213
214	214	214	214	214	214
215	215	215	215	215	215
216	216	216	216	216	216
217	217	217	217	217	217
218	218	218	218	218	218
219	219	219	219	219	219
220	220	220	220	220	220
221	221	221	221	221	221
222	222	222	222	222	222
223	223	223	223	223	223
224	224	224	224	224	224
225	225	225	225	225	225
226	226	226	226	226	226
227	227	227	227	227	227
228	228	228	228	228	228
229	229	229	229	229	229
230	230	230	230	230	230
231	231	231	231	231	231
232	232	232	232	232	232
233	233	233	233	233	233
234	234	234	234	234	234
235	235	235	235	235	235
236	236	236	236	236	236
237	237	237	237	237	237
238	238	238	238	238	238
239	239	239	239</		



**LANDSCAPE PLAN**

Scale: 1"=30'-0"

[illegible]

[illegible]

**BUILDING TYPE 3 - (2 BUILDINGS)**  
**REQUIRED TREES: 1 PER UNIT**

PLANT COUNTS:  
 TREES: 40  
 SHRUBS: 519

TOTAL TREE COUNTS(2 UNITS):  
 TREES: 80  
 SHRUBS: 1,038

TOTAL NATIVE COUNTS(2 UNITS):  
 TREES: 28  
 SHRUBS: 528

EXHIBIT L  
NORTH

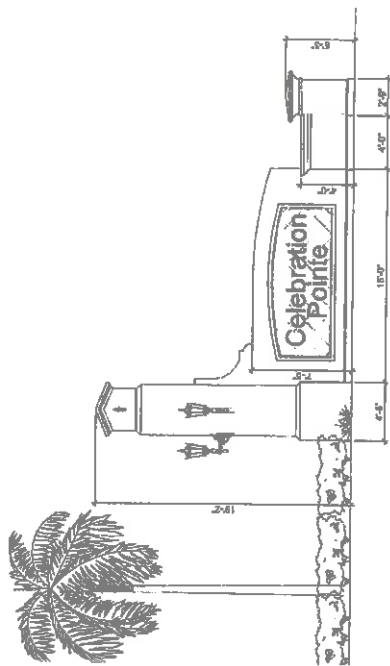
WITKIN HUITS  
DESIGN GROUP

3000 South First Avenue  
Tampa, FL 33629  
Telephone: 813.257.0550  
Fax: 813.257.0550  
www.witkinhuittsdesign.com

Received  
11/01/2014

No. 1  
 1997

Expanding Leadership Plans  
 Order: PY100959  
 8-7  
 2014  
 2015  
 2016  
 2017  
 2018  
 2019  
 2020  
 2021  
 2022  
 2023  
 2024  
 2025  
 2026  
 2027  
 2028  
 2029  
 2030  
 2031  
 2032  
 2033  
 2034  
 2035  
 2036  
 2037  
 2038  
 2039  
 2040  
 2041  
 2042  
 2043  
 2044  
 2045  
 2046  
 2047  
 2048  
 2049  
 2050  
 2051  
 2052  
 2053  
 2054  
 2055  
 2056  
 2057  
 2058  
 2059  
 2060  
 2061  
 2062  
 2063  
 2064  
 2065  
 2066  
 2067  
 2068  
 2069  
 2070  
 2071  
 2072  
 2073  
 2074  
 2075  
 2076  
 2077  
 2078  
 2079  
 2080  
 2081  
 2082  
 2083  
 2084  
 2085  
 2086  
 2087  
 2088  
 2089  
 2090  
 2091  
 2092  
 2093  
 2094  
 2095  
 2096  
 2097  
 2098  
 2099  
 2100  
 2101  
 2102  
 2103  
 2104  
 2105  
 2106  
 2107  
 2108  
 2109  
 2110  
 2111  
 2112  
 2113  
 2114  
 2115  
 2116  
 2117  
 2118  
 2119  
 2120  
 2121  
 2122  
 2123  
 2124  
 2125  
 2126  
 2127  
 2128  
 2129  
 2130  
 2131  
 2132  
 2133  
 2134  
 2135  
 2136  
 2137  
 2138  
 2139  
 2140  
 2141  
 2142  
 2143  
 2144  
 2145  
 2146  
 2147  
 2148  
 2149  
 2150  
 2151  
 2152  
 2153  
 2154  
 2155  
 2156  
 2157  
 2158  
 2159  
 2160  
 2161  
 2162  
 2163  
 2164  
 2165  
 2166  
 2167  
 2168  
 2169  
 2170  
 2171  
 2172  
 2173  
 2174  
 2175  
 2176  
 2177  
 2178  
 2179  
 2180  
 2181  
 2182  
 2183  
 2184  
 2185  
 2186  
 2187  
 2188  
 2189  
 2190  
 2191  
 2192  
 2193  
 2194  
 2195  
 2196  
 2197  
 2198  
 2199  
 2200  
 2201  
 2202  
 2203  
 2204  
 2205  
 2206  
 2207  
 2208  
 2209  
 2210  
 2211  
 2212  
 2213  
 2214  
 2215  
 2216  
 2217  
 2218  
 2219  
 2220  
 2221  
 2222  
 2223  
 2224  
 2225  
 2226  
 2227  
 2228  
 2229  
 2230  
 2231  
 2232  
 2233  
 2234  
 2235  
 2236  
 2237  
 2238  
 2239  
 2240  
 2241  
 2242  
 2243  
 2244  
 2245  
 2246  
 2247  
 2248  
 2249  
 2250  
 2251  
 2252  
 2253  
 2254  
 2255  
 2256  
 2257  
 2258  
 2259  
 2260  
 2261  
 2262  
 2263  
 2264  
 2265  
 2266  
 2267  
 2268  
 2269  
 2270  
 2271  
 2272  
 2273  
 2274  
 2275  
 2276  
 2277  
 2278  
 2279  
 2280  
 2281  
 2282  
 2283  
 2284  
 2285  
 2286  
 2287  
 2288  
 2289  
 2290  
 2291  
 2292  
 2293  
 2294  
 2295  
 2296  
 2297  
 2298  
 2299  
 2300  
 2301  
 2302  
 2303  
 2304  
 2305  
 2306  
 2307  
 2308  
 2309  
 2310  
 2311  
 2312  
 2313  
 2314  
 2315  
 2316  
 2317  
 2318  
 2319  
 2320  
 2321  
 2322  
 2323  
 2324  
 2325  
 2326  
 2327  
 2328  
 2329  
 2330  
 2331  
 2332  
 2333  
 2334  
 2335  
 2336  
 2337  
 2338  
 2339  
 2340  
 2341  
 2342  
 2343  
 2344  
 2345  
 2346  
 2347  
 2348  
 2349  
 2350  
 2351  
 2352  
 2353  
 2354  
 2355  
 2356  
 2357  
 2358  
 2359  
 2360  
 2361  
 2362  
 2363  
 2364  
 2365  
 2366  
 2367  
 2368  
 2369  
 2370  
 2371  
 2372  
 2373  
 2374  
 2375  
 2376  
 2377  
 2378  
 2379  
 2380  
 2381  
 2382  
 2383  
 2384  
 2385  
 2386  
 2387  
 2388  
 2389  
 2390  
 2391  
 2392  
 2393  
 2394  
 2395  
 2396  
 2397  
 2398  
 2399  
 2400  
 2401  
 2402  
 2403  
 2404  
 2405  
 2406  
 2407  
 2408  
 2409  
 2410  
 2411  
 2412  
 2413  
 2414  
 2415  
 2416  
 2417  
 2418  
 2419  
 2420  
 2421  
 2422  
 2423  
 2424  
 2425  
 2426  
 2427  
 2428  
 2429  
 2430  
 2431  
 2432  
 2433  
 2434  
 2435  
 2436  
 2437  
 2438  
 2439  
 2440  
 2441  
 2442  
 2443  
 2444  
 2445  
 2446  
 2447  
 2448  
 2449  
 2450  
 2451  
 2452  
 2453  
 2454  
 2455  
 2456  
 2457  
 2458  
 2459  
 2460  
 2461  
 2462  
 2463  
 2464  
 2465

[illegible][illegible]

## ENTRANCE SIGN CONCEPT

**Scale: 1/4"=1'-0"**



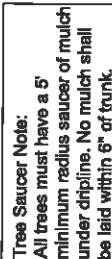
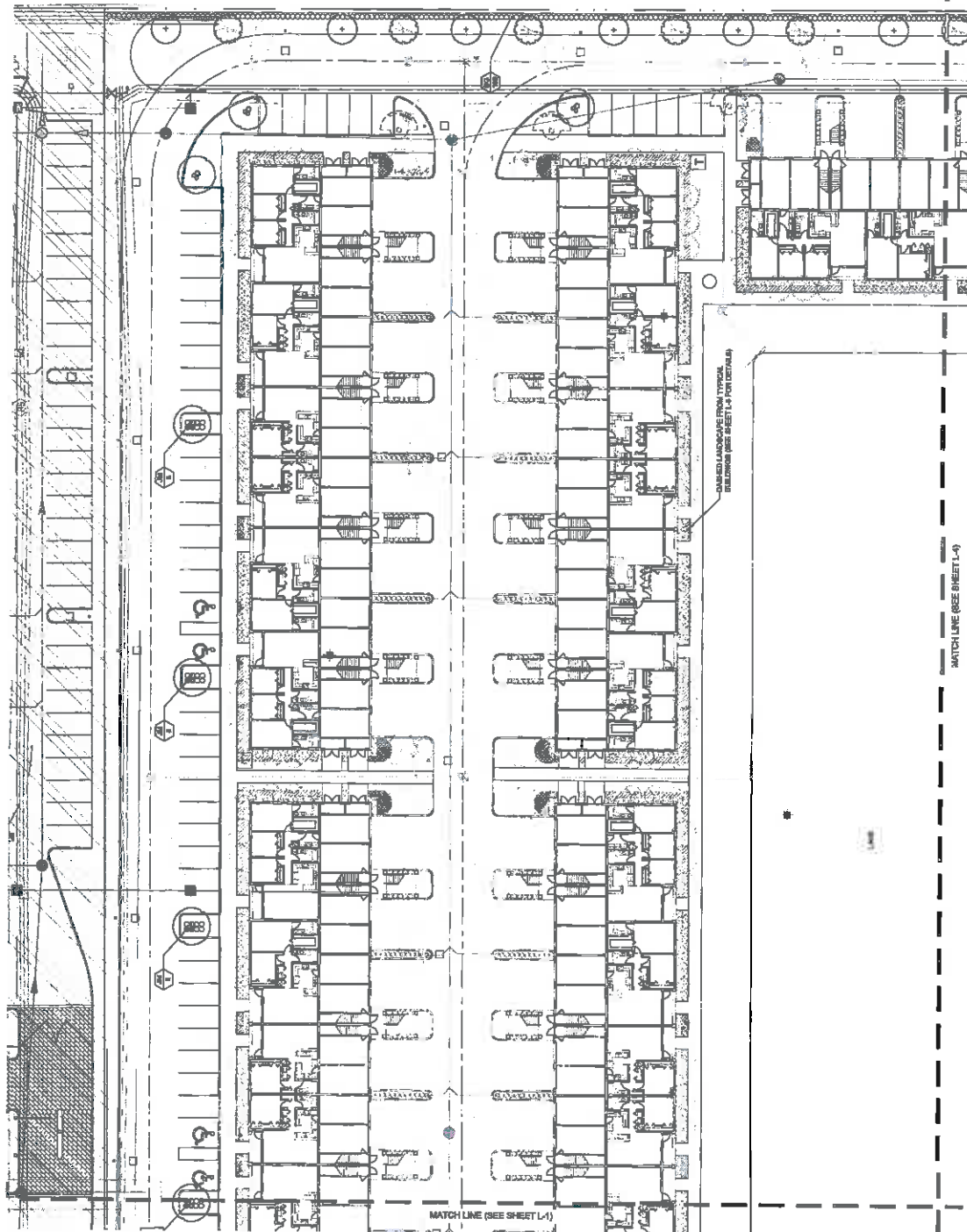
[illegible]

EXHIBIT  
5057A

**Note: 35% Palm substitutions allowed. Any palms above 35% provided are above and beyond required code compliance**



EXHIBIT L  
SOUTH



**Tree Saucer Note:**  
All trees must have a 5' minimum radius saucer of mulch under dripline. No mulch shall be laid within 6" of trunk.

**Note: 35% Palm substitutions allowed. Any palms above 35% provided are above and beyond required code compliance**

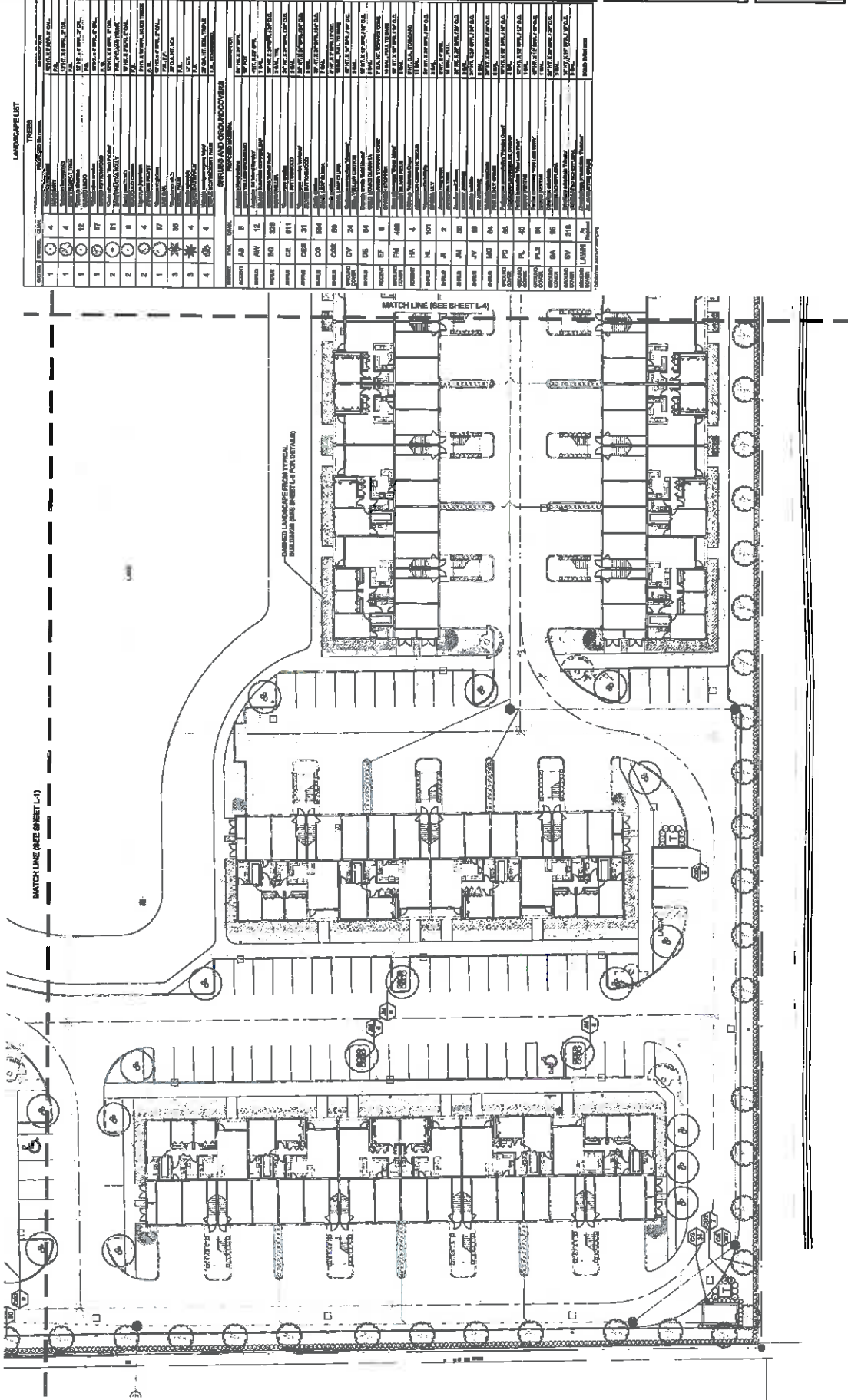


**WILTON HULTS DESIGN GROUP**  
Landscape Architecture

**CELEBRATION POINTE SOUTH**  
Margate, Florida  
LANDSCAPE PLAN

**L-3**

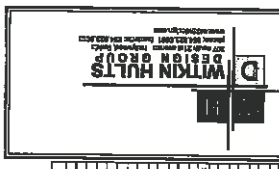
Project: Celebration Pointe South  
Date: 11/15/2011  
Scale: 1" = 20'-0"  
Drawn by: LCO  
Sheet No.: L-3



**Tree Saucer Note:**  
All trees must have a 5' minimum radius saucer of mulch under dripline. No mulch shall be laid within 6" of trunk.

**Note:** 35% Palm substitutions allowed. Any palms above 35% provided are above and beyond required code compliance

EXHIBIT L SOUTH



**WITHIN HULTS**  
DESIGN GROUP

www.withinhults.com  
10000 W. 10th Ave., Suite 100  
Miami, FL 33157  
Tel: 305.444.1111

**LANDSCAPE PLAN**  
Margate, Florida  
**Celebration Pointe South**

**L-4**

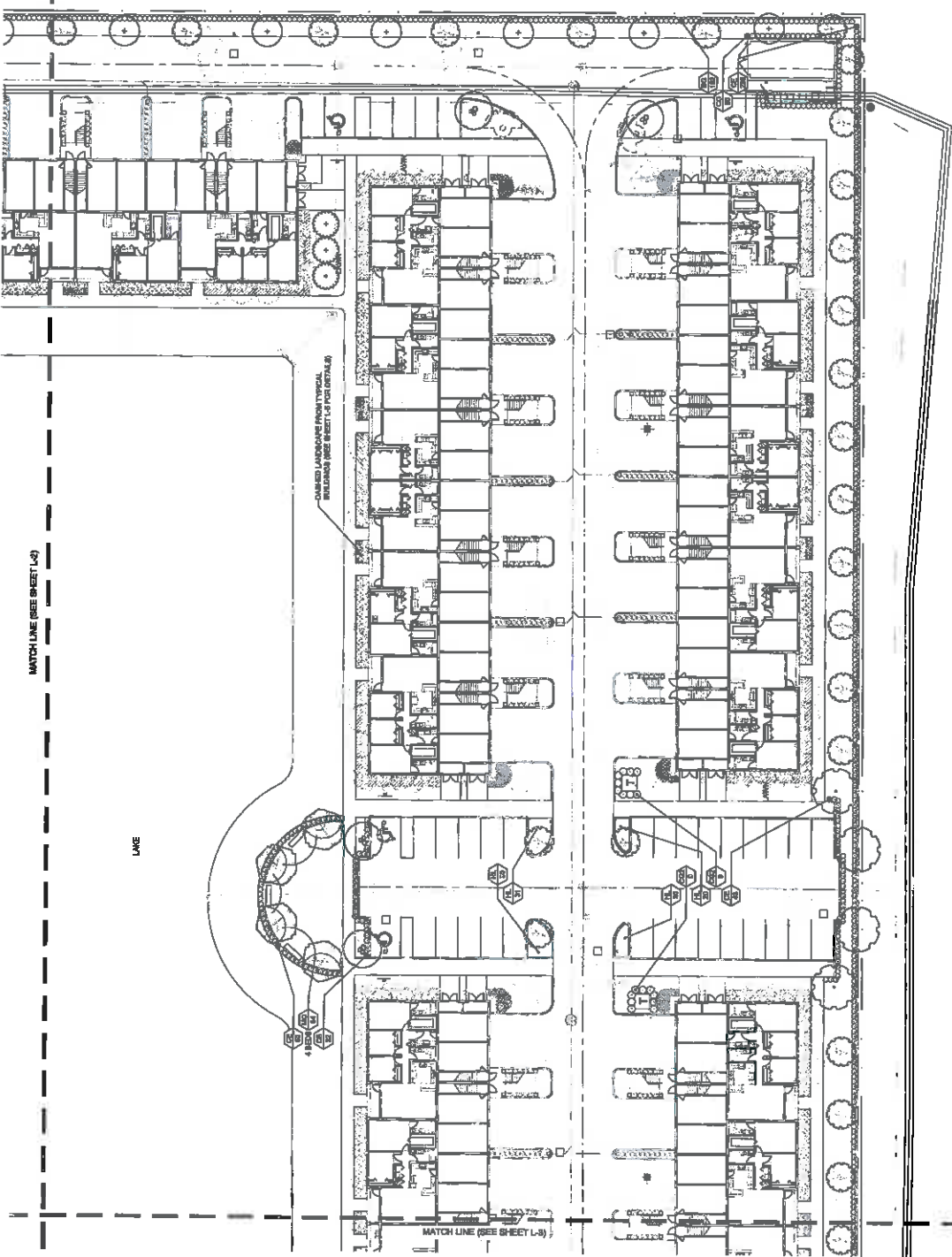
DATE: 02/28/2018  
SCALE: 1" = 20'-0"  
DRAWN BY: LHM  
CHECKED BY: LHM

**LANDSCAPE LIST**

QTY	SYMBOL	DESCRIPTION	REMARKS
1	1	1" DB PALM	
1	2	2" DB PALM	
1	3	3" DB PALM	
1	4	4" DB PALM	
1	5	5" DB PALM	
1	6	6" DB PALM	
1	7	7" DB PALM	
1	8	8" DB PALM	
1	9	9" DB PALM	
1	10	10" DB PALM	
1	11	11" DB PALM	
1	12	12" DB PALM	
1	13	13" DB PALM	
1	14	14" DB PALM	
1	15	15" DB PALM	
1	16	16" DB PALM	
1	17	17" DB PALM	
1	18	18" DB PALM	
1	19	19" DB PALM	
1	20	20" DB PALM	
1	21	21" DB PALM	
1	22	22" DB PALM	
1	23	23" DB PALM	
1	24	24" DB PALM	
1	25	25" DB PALM	
1	26	26" DB PALM	
1	27	27" DB PALM	
1	28	28" DB PALM	
1	29	29" DB PALM	
1	30	30" DB PALM	
1	31	31" DB PALM	
1	32	32" DB PALM	
1	33	33" DB PALM	
1	34	34" DB PALM	
1	35	35" DB PALM	
1	36	36" DB PALM	
1	37	37" DB PALM	
1	38	38" DB PALM	
1	39	39" DB PALM	
1	40	40" DB PALM	
1	41	41" DB PALM	
1	42	42" DB PALM	
1	43	43" DB PALM	
1	44	44" DB PALM	
1	45	45" DB PALM	
1	46	46" DB PALM	
1	47	47" DB PALM	
1	48	48" DB PALM	
1	49	49" DB PALM	
1	50	50" DB PALM	
1	51	51" DB PALM	
1	52	52" DB PALM	
1	53	53" DB PALM	
1	54	54" DB PALM	
1	55	55" DB PALM	
1	56	56" DB PALM	
1	57	57" DB PALM	
1	58	58" DB PALM	
1	59	59" DB PALM	
1	60	60" DB PALM	
1	61	61" DB PALM	
1	62	62" DB PALM	
1	63	63" DB PALM	
1	64	64" DB PALM	
1	65	65" DB PALM	
1	66	66" DB PALM	
1	67	67" DB PALM	
1	68	68" DB PALM	
1	69	69" DB PALM	
1	70	70" DB PALM	
1	71	71" DB PALM	
1	72	72" DB PALM	
1	73	73" DB PALM	
1	74	74" DB PALM	
1	75	75" DB PALM	
1	76	76" DB PALM	
1	77	77" DB PALM	
1	78	78" DB PALM	
1	79	79" DB PALM	
1	80	80" DB PALM	
1	81	81" DB PALM	
1	82	82" DB PALM	
1	83	83" DB PALM	
1	84	84" DB PALM	
1	85	85" DB PALM	
1	86	86" DB PALM	
1	87	87" DB PALM	
1	88	88" DB PALM	
1	89	89" DB PALM	
1	90	90" DB PALM	
1	91	91" DB PALM	
1	92	92" DB PALM	
1	93	93" DB PALM	
1	94	94" DB PALM	
1	95	95" DB PALM	
1	96	96" DB PALM	
1	97	97" DB PALM	
1	98	98" DB PALM	
1	99	99" DB PALM	
1	100	100" DB PALM	

**SHRUBS AND GROUNDCOVERS**

QTY	SYMBOL	DESCRIPTION	REMARKS
1	1	1" DB PALM	
1	2	2" DB PALM	
1	3	3" DB PALM	
1	4	4" DB PALM	
1	5	5" DB PALM	
1	6	6" DB PALM	
1	7	7" DB PALM	
1	8	8" DB PALM	
1	9	9" DB PALM	
1	10	10" DB PALM	
1	11	11" DB PALM	
1	12	12" DB PALM	
1	13	13" DB PALM	
1	14	14" DB PALM	
1	15	15" DB PALM	
1	16	16" DB PALM	
1	17	17" DB PALM	
1	18	18" DB PALM	
1	19	19" DB PALM	
1	20	20" DB PALM	
1	21	21" DB PALM	
1	22	22" DB PALM	
1	23	23" DB PALM	
1	24	24" DB PALM	
1	25	25" DB PALM	
1	26	26" DB PALM	
1	27	27" DB PALM	
1	28	28" DB PALM	
1	29	29" DB PALM	
1	30	30" DB PALM	
1	31	31" DB PALM	
1	32	32" DB PALM	
1	33	33" DB PALM	
1	34	34" DB PALM	
1	35	35" DB PALM	
1	36	36" DB PALM	
1	37	37" DB PALM	
1	38	38" DB PALM	
1	39	39" DB PALM	
1	40	40" DB PALM	
1	41	41" DB PALM	
1	42	42" DB PALM	
1	43	43" DB PALM	
1	44	44" DB PALM	
1	45	45" DB PALM	
1	46	46" DB PALM	
1	47	47" DB PALM	
1	48	48" DB PALM	
1	49	49" DB PALM	
1	50	50" DB PALM	
1	51	51" DB PALM	
1	52	52" DB PALM	
1	53	53" DB PALM	
1	54	54" DB PALM	
1	55	55" DB PALM	
1	56	56" DB PALM	
1	57	57" DB PALM	
1	58	58" DB PALM	
1	59	59" DB PALM	
1	60	60" DB PALM	
1	61	61" DB PALM	
1	62	62" DB PALM	
1	63	63" DB PALM	
1	64	64" DB PALM	
1	65	65" DB PALM	
1	66	66" DB PALM	
1	67	67" DB PALM	
1	68	68" DB PALM	
1	69	69" DB PALM	
1	70	70" DB PALM	
1	71	71" DB PALM	
1	72	72" DB PALM	
1	73	73" DB PALM	
1	74	74" DB PALM	
1	75	75" DB PALM	
1	76	76" DB PALM	
1	77	77" DB PALM	
1	78	78" DB PALM	
1	79	79" DB PALM	
1	80	80" DB PALM	
1	81	81" DB PALM	
1	82	82" DB PALM	
1	83	83" DB PALM	
1	84	84" DB PALM	
1	85	85" DB PALM	
1	86	86" DB PALM	
1	87	87" DB PALM	
1	88	88" DB PALM	
1	89	89" DB PALM	
1	90	90" DB PALM	
1	91	91" DB PALM	
1	92	92" DB PALM	
1	93	93" DB PALM	
1	94	94" DB PALM	
1	95	95" DB PALM	
1	96	96" DB PALM	
1	97	97" DB PALM	
1	98	98" DB PALM	
1	99	99" DB PALM	
1	100	100" DB PALM	



**Tree Saver Note:**  
All trees must have a 5' minimum radius saucer of mulch under drip-line. No mulch shall be laid within 6" of trunk.

**Note:** 35% Palm substitutions allowed. Any palms above 35% provided are above and beyond required code compliance

EXHIBIT L  
50074

5.7

**TYPICAL TOTALS**  
TOTAL TREES: 232  
TOTAL SHRUBS: 4,143  
GROUNDCOVERS: 2,208  
CANOPY: 88,800 S.F.

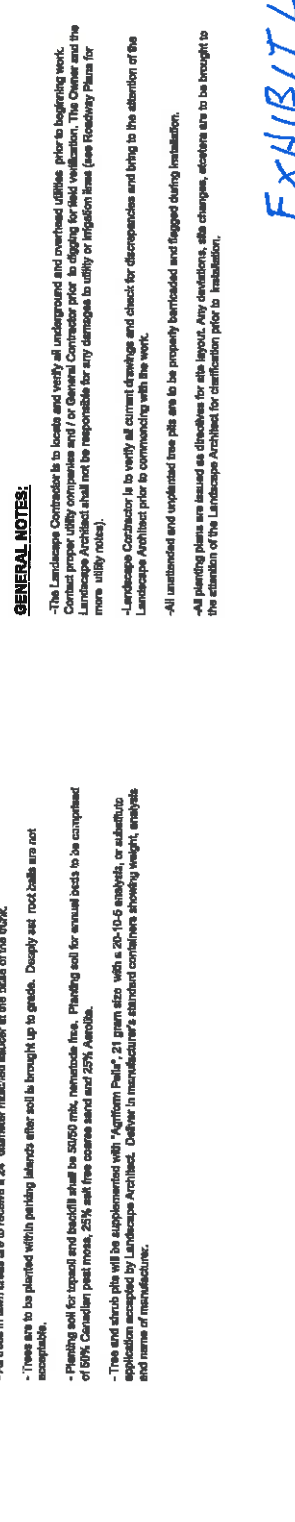
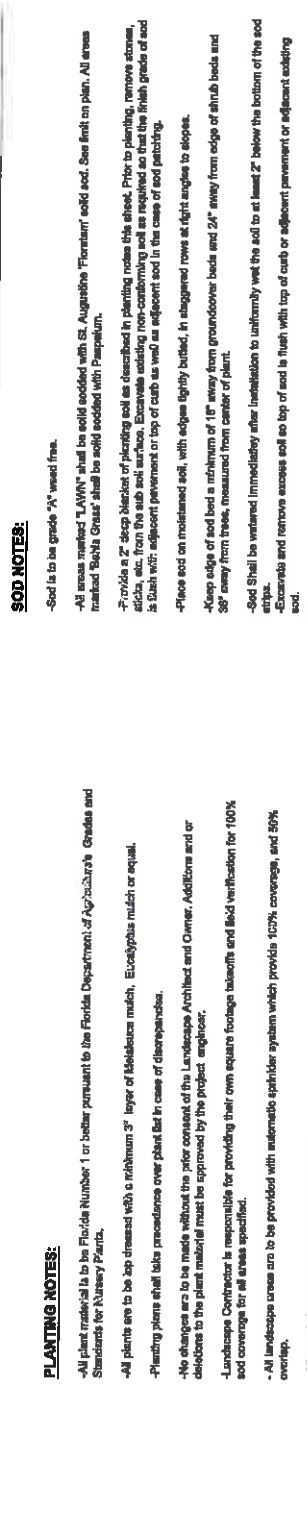
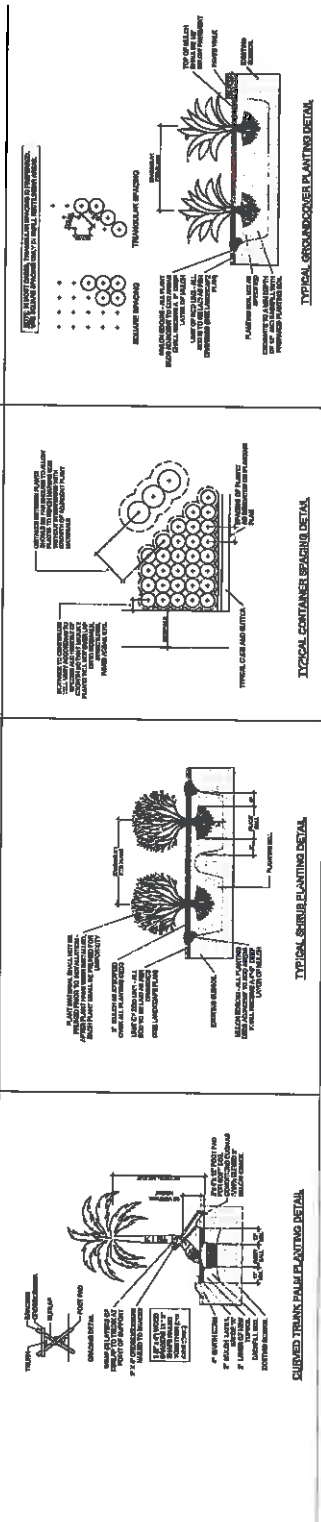
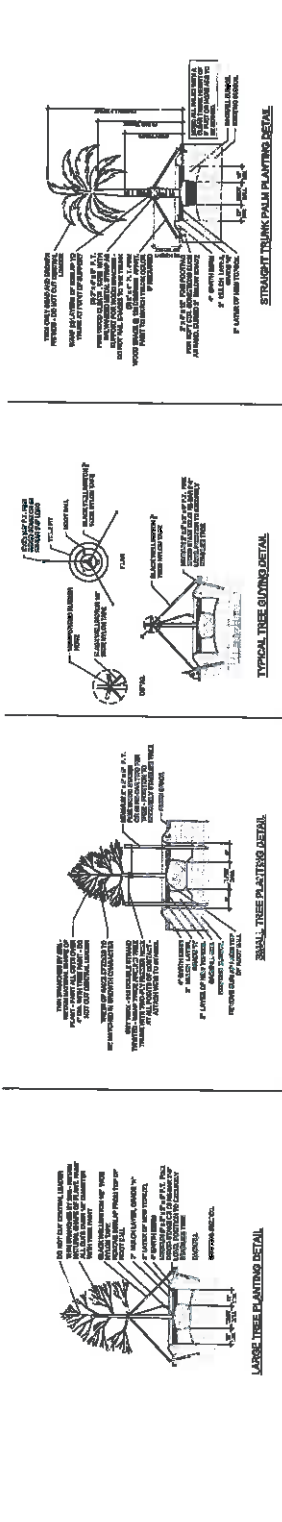
EXHIBIT L  
5005N

This architectural site plan illustrates the layout of the University of Illinois at Chicago campus. The plan features a central corridor with several large, multi-story building footprints. To the left of this corridor are several courtyards, each labeled 'LAWN' and containing various trees and landscaping. To the right of the corridor are more buildings and a large area labeled 'RESTAURANT'. The plan also shows a 'BIOWALK' area at the bottom and a 'LAWN' area at the top. The entire campus is bounded by 'STREET' lines on the left and right sides. The plan is oriented with North at the top, as indicated by a north arrow in the upper left corner.

**Scale: 1" = 10'-0"**



500TH



**SOD NOTES:**

- Sod is to be grade "X" weed free.
- All areas marked "LAWN" shall be solid sodded with St. Augustine "Floriant" sod. See limit on plan. All areas marked "Baldie Grass" shall be solid sodded with Paspalum.
- Provide a 2" deep bedrock of planting soil as described in planting notes this sheet. Prior to planting, remove stones, sticks, etc. from the sub soil surface. Excavate sodding well as required so that the finish grade of sod is flush with adjacent pavement or top of curb as well as adjacent sod in the case of sod patching.
- Place sod on moistened soil, with edges tightly butted, in staggered rows at right angles to slopes.
- Keep edge of sod and a minimum of 18" away from groundcover beds and 24" away from edge of shrub beds and 36" away from trees, measured from center of plant.
- Sod shall be watered immediately after installation to uniformly wet the soil to at least 2" below the bottom of the sod strips.
- Excavate and remove excess soil so top of sod is flush with top of curb or adjacent pavement or adjacent existing sod.

**GENERAL NOTES:**

- The Landscape Contractor is to locate and verify all underground and overhead utilities prior to beginning work. Contact proper utility companies and / or General Contractor prior to digging for field verification. The Contractor and the Landscape Architect shall not be responsible for any damages to utility or irrigation lines (see Footing Plans for more utility notes).
- Landscape Contractor is to verify all current drawings and check for discrepancies and bring to the attention of the Landscape Architect prior to commencing with the work.
- All unattended and unplanted tree pits are to be properly bermed and flagged during installation.
- All planting plans are to be properly bermed and flagged during installation.
- All planting plans are to be properly bermed and flagged during installation.
- All planting plans are to be properly bermed and flagged during installation.

**PLANTING NOTES:**

- All plant material is to be Florida Number 1 or better pursuant to the Florida Department of Agriculture's Grades and Standards for Nursery Plants.
- All plants are to be top dressed with a minimum 3" layer of Mulchless mulch, Eucalyptus mulch or equal.
- Planting plans shall take precedence over plant list in case of discrepancies.
- No changes are to be made without the prior consent of the Landscape Architect and Owner. Additions and or deletions to the plant material must be approved by the project engineer.
- Landscape Contractor is responsible for providing their own square footage takeoffs and field verification for 100% and coverage for all areas specified.
- All landscape areas are to be provided with automatic sprinkler system which provide 100% coverage, and 50% overlap.
- All trees in lawn areas are to receive a 24" diameter mulched saucer at the base of the trunk.
- Trees are to be planted within parking islands after soil is brought up to grade. Deeply set root balls are not acceptable.
- Planting soil for topsoil and backfill shall be 50/50 mix, topsoil and sand. Planting soil for annual beds to be comprised of 50% Canadian peat moss, 25% soft free coarse sand and 25% Aerobic.
- Tree and shrub pits will be supplemented with "Agriform Pellet", 21 gram size with a 20-10-6 analysis, or substitute application accepted by Landscape Architect. Deliver in manufacturer's standard containers showing weight, analysis and name of manufacturer.

**EXHIBIT L**  
**SOUTH**