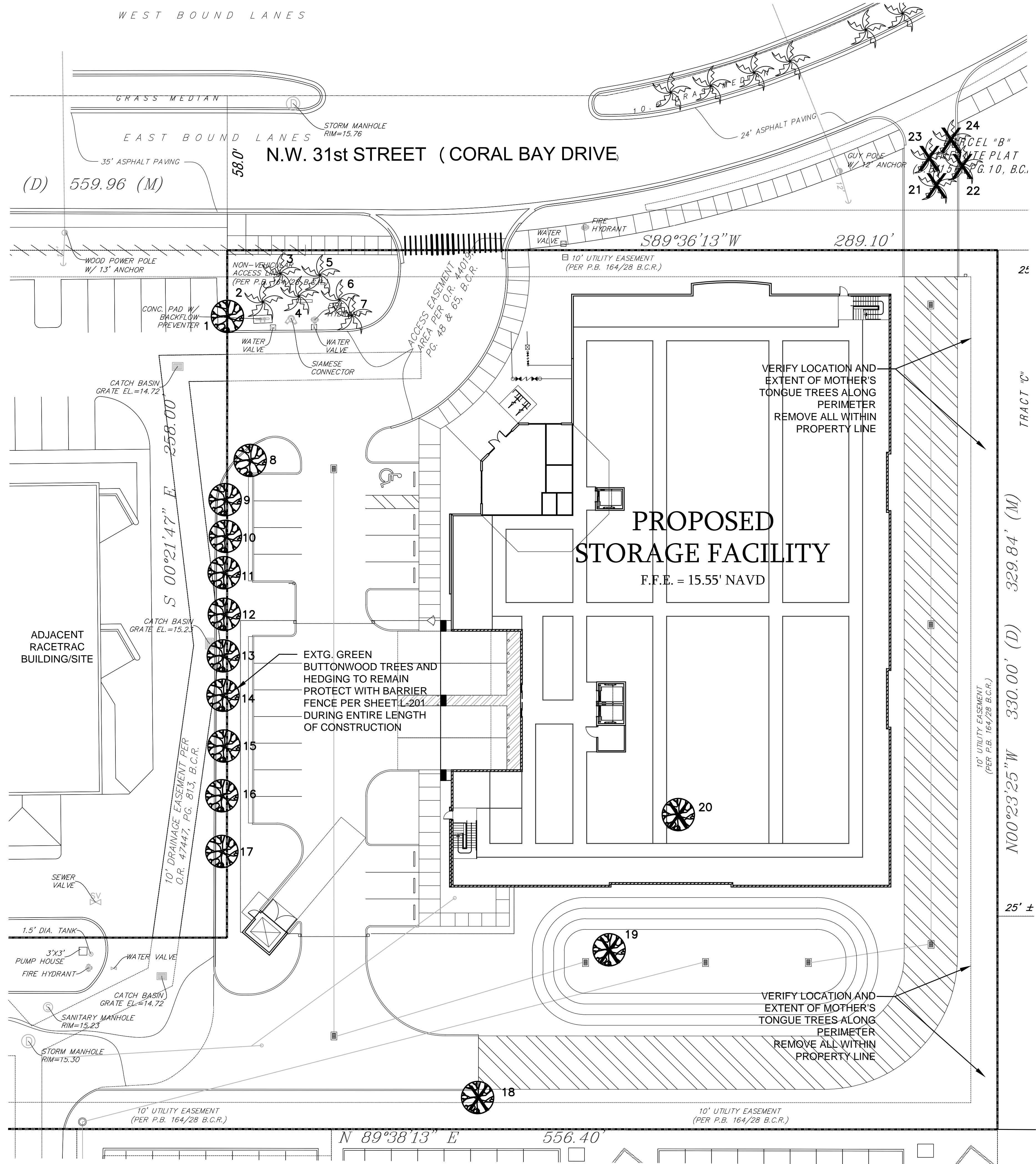


This document, together with the concepts and designs presented herein, is intended only for the specific purpose and client for which it was prepared. Reuse of and improper reliance on this document without written authorization and adaptation by Green Earth Landscape Architecture, shall be without liability to Green Earth Landscape Architecture.



GENERAL NOTES:

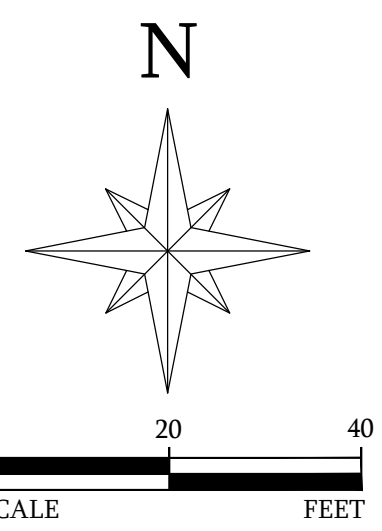
- CONTRACTOR TO VISIT SITE AND REVIEW PLANS PRIOR TO SUBMITTING A PROPOSAL TO OWNER. CONTRACTOR SHALL VERIFY SITE AND TREE INFORMATION, AND BRING ANY DISCREPANCIES WITHIN THE PLANS TO THE ATTENTION OF THE LANDSCAPE ARCHITECT FOR CLARIFICATION PRIOR TO SUBMITTING A PROPOSAL.
- THESE PLANS WERE PREPARED BASED ON THE BEST INFORMATION AVAILABLE AT THE TIME OF DESIGN BUT MAY REQUIRE FIELD VERIFICATION OF FINAL TREE LOCATIONS AND DETERMINATION OF SPECIES. ALL FINAL PLANS SHALL BE COORDINATED WITH FINAL APPROVED SITE PLAN.
- CONTRACTOR TO VERIFY ALL UNDERGROUND UTILITIES BEFORE WORK COMMENCES AND SHALL PROTECT ALL UNDERGROUND/ABOVE GROUND UTILITIES AND EXISTING CONDITIONS-TO-REMAIN DURING CONSTRUCTION.
- CONTRACTOR ONLY TO RELOCATE SABAL PALMS THAT ARE IN CONFLICT WITH NEW SITE PLAN AND DRIVES AS INDICATED. ALL OTHER TREES AND PALMS ARE TO REMAIN AND RECEIVE A PROTECTIVE BARRIER FENCING AROUND THE DRIPLINE OF THE CANOPY OR CROWN EXCEPT FOR ALBIZIA TREES TO BE REMOVED AS INDICATED WITH AN 'X' AND PER THE TREE CHART. SEE LANDSCAPE DETAILS SHEET.
- CONTRACTOR TO COMPLETELY REMOVE ALL SHRUBS, GROUNDCOVER AND TURF GRASS WHERE NEW SHRUBS, GROUNDCOVER AND TURFGRASS ARE SPECIFIED TO PREPARE FOR NEW PLANTINGS. CONTRACTOR TO REPAIR AND RESTORE ANY LANDSCAPE OR TURF GRASS AREAS THAT ARE AFFECTED DURING CONSTRUCTION TO THE SATISFACTION OF THE LANDSCAPE ARCHITECT/OWNER'S REPRESENTATIVE AND THE LANDSCAPE INSPECTOR. SEE LANDSCAPE DETAILS FOR AMENDED SOIL INSTALLATION REQUIREMENTS.
- LANDSCAPE INSPECTOR AND LANDSCAPE ARCHITECT/OWNER'S REPRESENTATIVE RESERVE THE RIGHT TO MAKE CHANGES IN MATERIAL, QUANTITIES AND PROJECT SCOPE.
- IN THE EVENT OF DISPUTE, THE LANDSCAPE ARCHITECT'S INTERPRETATION SHALL BE FINAL.
- ALL WORK TO BE IN ACCORDANCE WITH ALL APPLICABLE FEDERAL, STATE, COUNTY AND LOCAL REGULATIONS.
- CONTRACTOR TO LEAVE SITE COMPLETELY CLEAN, RESTORED, AND FREE OF DEBRIS.
- NO TREE SHALL BE RELOCATED UNTIL A TREE REMOVAL PERMIT IS SECURED AS REQUIRED.
- FOR SABAL PALMS TO BE RELOCATED, ROOT PRUNE TO A DEPTH OF 30" AROUND ENTIRE PERIMETER OF PALM TO CREATE A 3' DIAMETER TRENCH PRIOR TO RELOCATION. TIGHTLY WRAP ROOTBALL IN BURLAP AND SECURE OPEN AREAS TOGETHER. ONCE REPLANTED, BRACE AND WATER DAILY FOR 30 DAYS AT A MINIMUM OF 5 GALLONS PER OCCURRENCE. BEYOND 30 DAYS, WATER AT LEAST 3 TIMES PER WEEK FOR THE NEXT 3 MONTHS OR UNTIL SUBSTANTIALLY ACCLIMATED. HURRICANE CUT ALL SABAL PALM CROWNS JUST PRIOR TO RELOCATION.

TREE DISPOSITION CHART

No.	LATIN NAME	COMMON NAME	DBH (IN INCHES)	HEIGHT	SPREAD	ACTION
1	Lagerstroemia indica	CRAPE MYRTLE	4" combined	12'	8'	REMAIN
2	Sabal palmetto	SABAL PALM	12"	14'	8'	REMAIN
3	Sabal palmetto	SABAL PALM	12"	17'	8'	REMAIN
4	Sabal palmetto	SABAL PALM	12"	12'	8'	REMAIN
5	Sabal palmetto	SABAL PALM	12"	15'	8'	REMAIN
6	Sabal palmetto	SABAL PALM	12"	19'	8'	REMAIN
7	Sabal palmetto	SABAL PALM	12"	15'	8'	REMAIN
8	Sabal palmetto	SABAL PALM	12"	12'	8'	REMAIN
9	Conocarpus erectus	GREEN BUTTONWOOD	7"	18'	11'	REMAIN
10	Conocarpus erectus	GREEN BUTTONWOOD	7"	18'	11'	REMAIN
11	Conocarpus erectus	GREEN BUTTONWOOD	7"	18'	11'	REMAIN
12	Conocarpus erectus	GREEN BUTTONWOOD	7"	18'	11'	REMAIN
13	Conocarpus erectus	GREEN BUTTONWOOD	7"	18'	11'	REMAIN
14	Conocarpus erectus	GREEN BUTTONWOOD	7"	18'	11'	REMAIN
15	Conocarpus erectus	GREEN BUTTONWOOD	7"	18'	11'	REMAIN
16	Conocarpus erectus	GREEN BUTTONWOOD	7"	18'	11'	REMAIN
17	Conocarpus erectus	GREEN BUTTONWOOD	7"	18'	11'	REMAIN
18	Albizia lebbbeck	WOMAN'S TONGUE	16" combined	12'	14'	REMOVE
19	Albizia lebbbeck	WOMAN'S TONGUE	20" combined	22'	27'	REMOVE
20	Albizia lebbbeck	WOMAN'S TONGUE	20" combined	24'	30'	REMOVE
21	Syagrus romanzoffiana	QUEEN PALM	10"	14'	8'	REMOVE
22	Syagrus romanzoffiana	QUEEN PALM	10"	14'	8'	REMOVE
23	Syagrus romanzoffiana	QUEEN PALM	10"	14'	8'	REMOVE
24	Syagrus romanzoffiana	QUEEN PALM	10"	14'	8'	REMOVE

TREE INVENTORY LEGEND

- EXISTING TREE TO REMAIN IN PLACE  
SEE LANDSCAPE DETAILS FOR REQUIRED TREE PROTECTION BARRIER FENCING TO BE ERCTED FROM START TO END OF CONSTRUCTION
- EXISTING TREE TO BE REMOVED
- EXISTING PALM TO REMAIN IN PLACE  
SEE LANDSCAPE DETAILS FOR REQUIRED TREE PROTECTION BARRIER FENCING TO BE ERCTED FROM START TO END OF CONSTRUCTION
- EXISTING PALM TO BE REMOVED



LICENSED PROFESSIONAL

William Dale Bryant

FL LICENSE NUMBER

LA6666943

PROJECT #

16111

DATE

05-16-2016

SCALE

AS NOTED

DESIGNED BY

WDB

DRAWN BY

WDB

CHECKED BY

WDB

SELF STORAGE FACILITY

SR7 AND N.W. 31st ST.

MARGATE, FL

CITY OF MARGATE

BROWARD COUNTY, FL

G R E E N   E A R T H

L A N D S C A P E   A R C H I T E C T U R E

954-638-8825

dabryand@greeneearth.com

Hollywood, FL 33020

Tree Disposition

Plan

SHEET NUMBER

L-100

REVISIONS

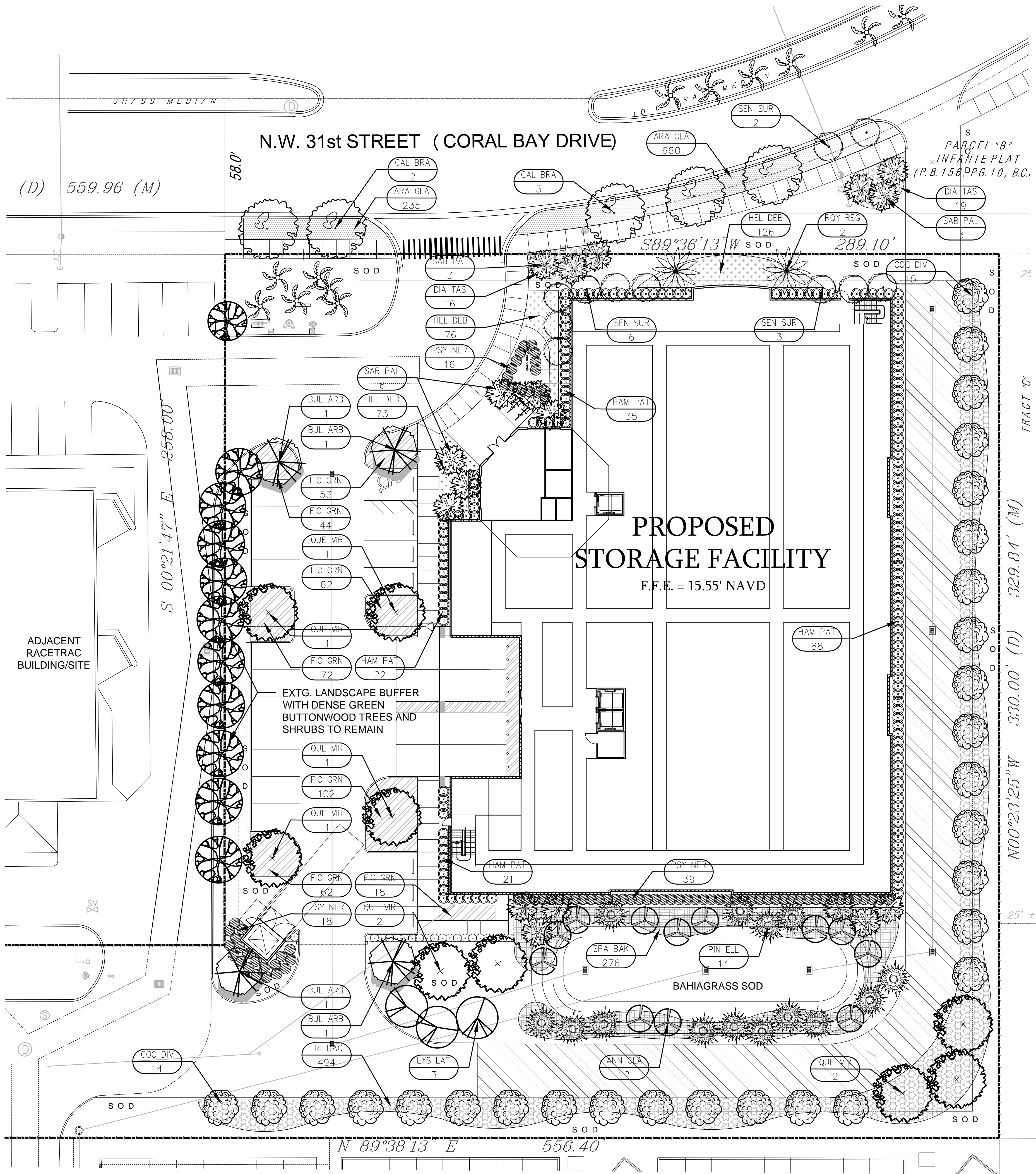
No.

DATE

BY



This document, together with the concepts and designs presented herein, as an instrument of service, is intended only for the specific purpose and client for which it was prepared. Reuse of and improper reliance on this document without written authorization and adaptation by Green Earth Landscape Architecture, shall be without liability to Green Earth Landscape Architecture.



NOTES:

- All proposed plant material shall be a minimum of Florida No. 1 or better as described in Grades and Standards for Nursery Plants, Parts I and II, latest edition published by the Florida Department of Agriculture and Consumer Services.
- All planted areas shall contain a three (3) inch layer of wood mulch from harvested Eucalyptus or Melaleuca stands, solar sterilized. Keep mulch a min. 12" away from tree trunks. Create mulch tree rings around all trees that are not within a shrub or groundcover bed.
- All existing and new plant material shall be pruned, if needed, to achieve the shape and form characteristic to their design intent. Pruning shall be in strict accordance with ISA A300 guidelines.
- All sod or seed shall be certified (if applicable), and weed and insect free.
- Contractor shall be responsible for locating existing utilities or other obstructions which may interfere with plant installation.
- Call Sunshine One Call service for underground utility locations 48 hours prior to any excavation or digging 1-800-432-4770.
- All above ground mechanical equipment, irrigation pumps, FPL transformers, etc. shall be screened on a minimum of three (3) sides.
- All landscape materials to be guaranteed for a period of 1 calendar year after final acceptance.
- The landscape plans are based on Florida Friendly Landscape principles.
- Where overhead power lines exist, all proposed trees and palm setbacks shall conform with the Florida Power and Light (FPL) Guidelines for setbacks from overhead utility lines.
- Plant quantities are provided for convenience. In the event of discrepancies between plant quantities and plan graphics, plan graphics shall take precedence.
- All landscape buffer areas shall have uncompacted coarse loam that is a minimum of 12 inches deep. Soils shall be appreciably free of gravel, stones, rubble or trash. All compacted soil, contaminated soil or roadbase fill shall be removed. Under no circumstances shall soils with greater than five percent or less than 0.5 percent organic matter be accepted.
- All sod shall be St. Augustine 'Palmetto', a drought-tolerant variety of St. Augustine grass.
- Grade all landscape areas to a fine grade after limerock and deleterious materials are removed and amended soil is placed. Thoroughly remove ALL vegetation not specified to remain prior to installation of new landscape materials.
- At time of Building Permit, Irrigation Plans shall be submitted with Landscape Plans. All landscape areas will receive 100% head-to-head irrigation coverage by means of an automatic, underground irrigation system with rain sensor, backflow prevention (if potable source is used) and an automatic programmable timer. System shall be designed to comply with South Florida Water Management District and local regulations.
- NOTE: Maximum allowable sod within site is 30% of pervious area. The remainder shall be shrubs and groundcover.
- NOTE: Maximum allowable sod in right-of-way is 50%. The remainder shall be shrubs and groundcover.

LANDSCAPE CODE COMPLIANCE TABULAR DATA CHART		
SECTION	REQUIRED	PROVIDED
SEC. 23-6 LANDSCAPE ADJACENT TO R.O.W. 1 TREE PER 40LF @ 289.1 LF + HEDGE PARALLEL TO R.O.W.	7.23 TREES PARALLEL HEDGE	7 TREES 100% GROUNDCOVER
SEC. 23-7 SHADE PERIMETER BUFFER @ 256 LF 1 TREE/75 LF + SHRUBS AND GROUNDCOVER (<30% TURF)	3.4 TREES + SHRUBS AND GROUNDCOVER	9 EXTG. TREES/33 PROPOSED TREES + SHRUBS AND GROUNDCOVER
SEC. 23-8 PARKING AND VEHICLE USE AREA 12% CANOPY COVERAGE OF GROSS LOT AREA @ 95,140SF	1 TREE + 5 SHRUBS PER 200SF OF LANDSCAPE AREA	52 TREES 5+ SHRUBS PER 200SF OF LANDSCAPE AREA
SEC. 23-9 DUMPSTER ENCLOSURE AND SCREENING COMBINATION OF SHRUBS AND GROUNDCOVER ON 3 SIDES 3' MIN. WIDTH	SHRUBS ON 3 SIDES OF CBS ENCLOSURE	SHRUBS ON 3 SIDES OF CBS ENCLOSURE

PLANT LIST

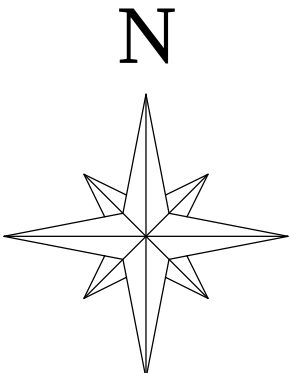
TREE AND PALMS

SYMBOL	QUANTITY	LATIN NAME	COMMON NAME	SIZE	DESCRIPTION
ANN GLA	12	Annona glabra	POND APPLE	8' HT./1.5" DBH	FULL RADIAL BRANCHING
BUL ARB	4	Bulnesia arborea	VERAWOOD	12' HT./2" DBH	STRAIGHT TRUNK, FULL RADIAL BRANCHING, 5' C.T.
CAL BRA	5	Calophyllum brasiliense	BRAZILIAN BEAUTYLEAF	12' HT./2" DBH	STRAIGHT TRUNK, FULL RADIAL BRANCHING, 5' C.T.
COC DIV	29	Coccoloba diversifolia	PIGEON PLUM	12' HT./2" CAL	STRAIGHT TRUNK, FULL RADIAL BRANCHING, 5' C.T.
LYS LAT	3	Lysiloma latisiliquum	WEeping TAMARIND	12' HT./2" CAL	STRAIGHT TRUNK, FULL RADIAL BRANCHING, 5' C.T.
PIN ELL	14	Pinus elliotii	SLASH PINE	14' HT./2.5" CAL	STRAIGHT TRUNK, FULL RADIAL BRANCHING, 5' C.T.
QUE VIR	9	Quercus virginiana	LIVE OAK	12' HT./2" CAL	STRAIGHT TRUNK, FULL RADIAL BRANCHING, 5' C.T.
SAB PAL	18	Sabal palmetto	SABAL PALM	14'/18'/22" HTS.	STRAIGHT EVEN TRUNKS, HURRICANE CUT, STAGGER HTS. IN GROUPS OF 3
SEN SUR	11	Senna surratensis	CASSIA	12' HT./2" CAL	STRAIGHT TRUNK, FULL RADIAL BRANCHING, 5' C.T.

SHRUBS AND GROUNDCOVER

SYMBOL	QUANTITY	LATIN NAME	COMMON NAME	SIZE	DESCRIPTION
ARA GLA	1000	Arachis glabrata	PERENNIAL PEANUT/ECOTURF	6-8" CONT. OR SOD	FULL, SPACE 15" O.C. (CONT.) OR LAY CONTINUOUS (TURF FORM)
DIA TAS	35	Dianella tasmanica 'Variegata'	VARIEGATED FLAX LILY	3 GAL.	24" X 24", FULL, SPACE 24" O.C.
FIC GRN	211	Ficus microcarpa 'Green Island'	GREEN ISLAND FICUS	1 GAL.	18" IN. SPREAD, FULL, SPACE 24" O.C.
HAM PAT	334	Hamelia patens 'Compacta'	DWARF FIREBUSH	3 GAL.	MIN. 24" X 24", FULL, SPACE 36" O.C.
PSY NER	73	Psychotria nervosa	WILD COFFEE	3 GAL.	24"X24", FULL, SPACE 36" ON CENTER
SPA BAK	276	Spartina bakeri	SAND CORDGRASS	1 GAL.	18"X18", FULL, SPACE 36" ON CENTER
TRI DAC	494	Tripsacum dactyloides	FAKAHATCHEE GRASS	1 GAL.	18"X18", FULL, SPACE 36" ON CENTER

NOTE: ALL LANDSCAPE AREAS DENOTED WITH 'SOD' TO RECEIVE ST. AUGUSTINE 'PALMETTO' VARIETY OF SOD TURFGRASS. LAY SOD ON 2" BLANKET OF FINE/FINISH GRADED 90% SAND/TOPSOIL AMENDED SOIL MIX, SEW PIECES WITH TIGHT JOINTS, STAGGER JOINTS, CUT SMOOTH, EVENLY CURVED FLOWING EDGES AS DEPICTED ON PLAN.  
ALL AREAS INDICATED AS BAHIA GRASS TO RECEIVED BAHIA GRASS SOD IN SOLID PIECES OVER FINE/FINISH GRADE SCARIFIED SOIL.



TREE INVENTORY LEGEND



- EXISTING TREE TO REMAIN IN PLACE  
SEE LANDSCAPE DETAILS FOR REQUIRED TREE PROTECTION BARRIER FENCING TO BE ERECTED FROM START TO END OF CONSTRUCTION



- EXISTING PALM TO REMAIN IN PLACE  
SEE LANDSCAPE DETAILS FOR REQUIRED TREE PROTECTION BARRIER FENCING TO BE ERECTED FROM START TO END OF CONSTRUCTION

LICENSED PROFESSIONAL  
William Dale Bryant  
FL LICENSE NUMBER  
LA6666943

PROJECT #	DATE	SCALE	AS NOTED	DESIGNED BY	WDB	DRAWN BY	WDB	CHECKED BY	WDB	REVISIONS	DATE	BY
16111	05-16-2016	SCALE	AS NOTED	DESIGNED BY	WDB	DRAWN BY	WDB	CHECKED BY	WDB	REVISIONS	DATE	BY

SELF STORAGE FACILITY  
SR7 AND N.W. 31st ST.  
MARGATE, FL

CITY OF MARGATE  
BROWARD COUNTY, FL



Landscape Planting  
Plan

SHEET NUMBER  
L-200



5 LAYERS OF BURLAP

3/4" STEEL BANDING

2x4 BATTONS

NAIL BRACING TO WOOD BATTONS (DO NOT ALLOW NAILS TO PENETRATE TRUNK)

WOOD BRACING (SEE NOTES BELOW)

3" LAYER OF SHREDDED BARK MULCH (KEEP 12" AWAY FROM TRUNK)

COMPACTED SOIL TREE RING

FINAL GRADE

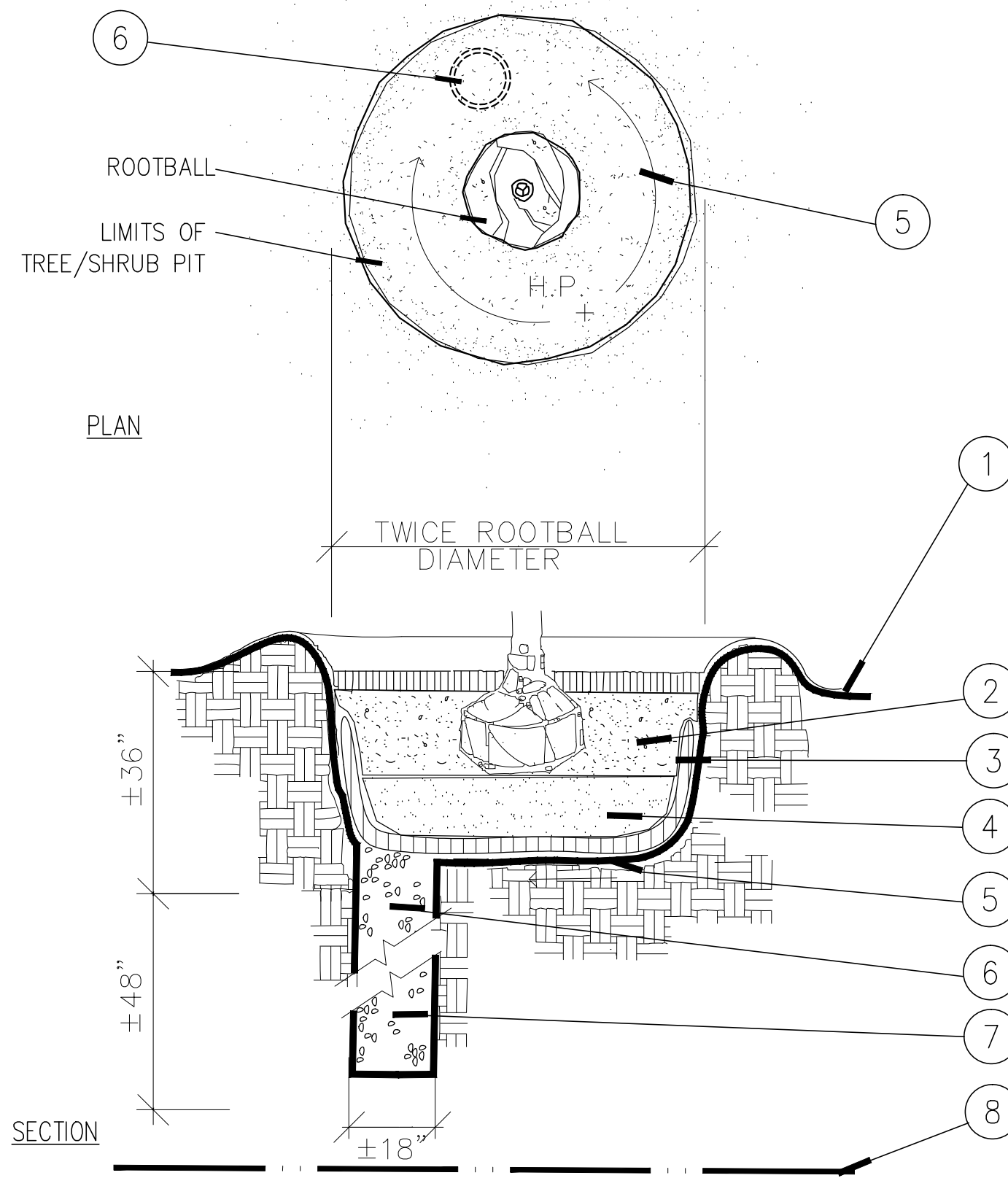
2X4 TREE STAKE

AMENDED PLANTING SOIL  
RATIO MIX OF 50% CLEAN, SCREENED SAND AND 50% PULVERIZED TOPSOIL, FREE OF WEEDS AND NEMATODES BACKFILLED IN PLANTING HOLE THAT IS A MINIMUM TWICE THE DIAMETER OF THE ROOTBALL

MINIMUM TWICE THE DIAMETER OF ROOTBALL

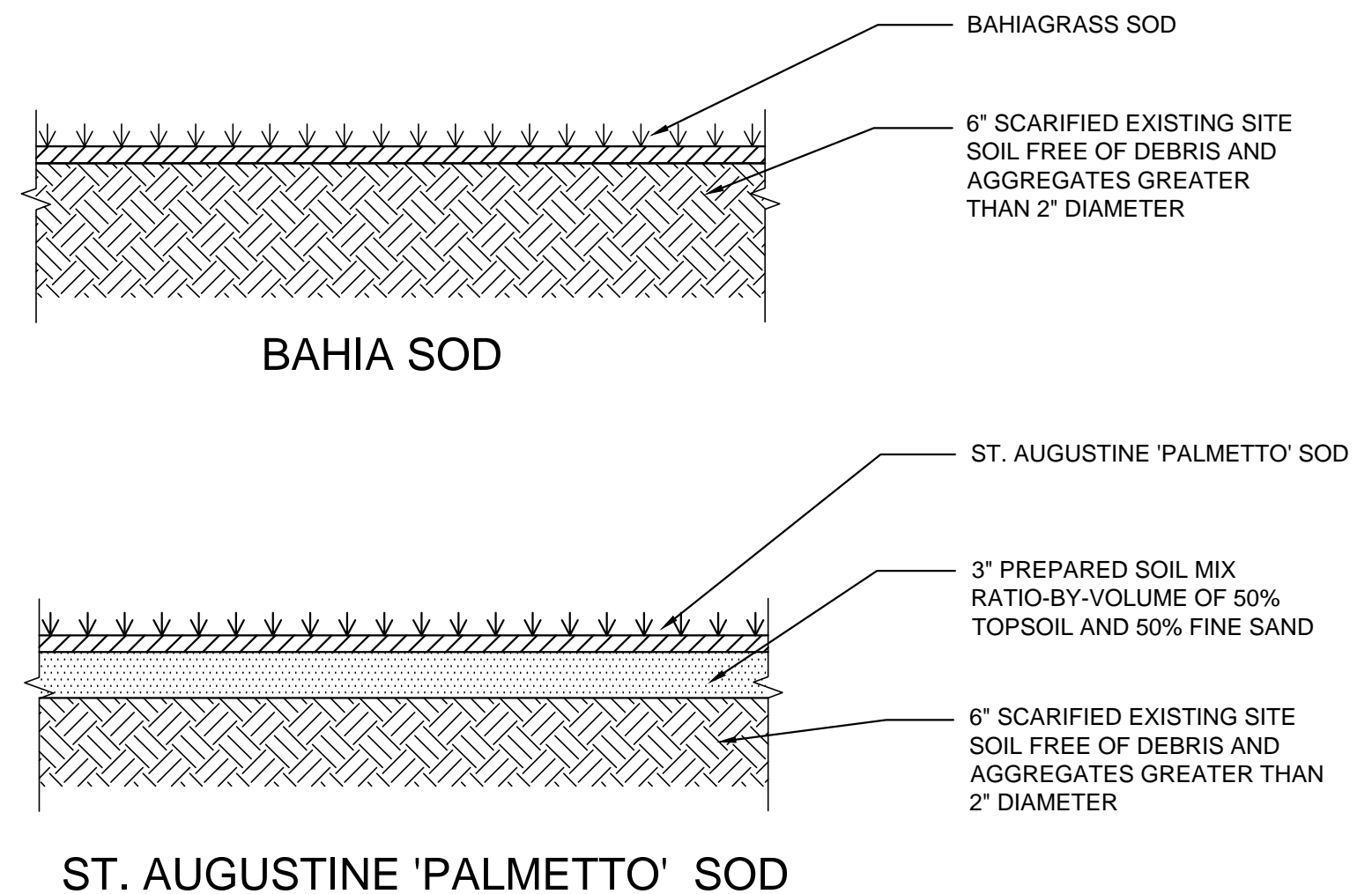
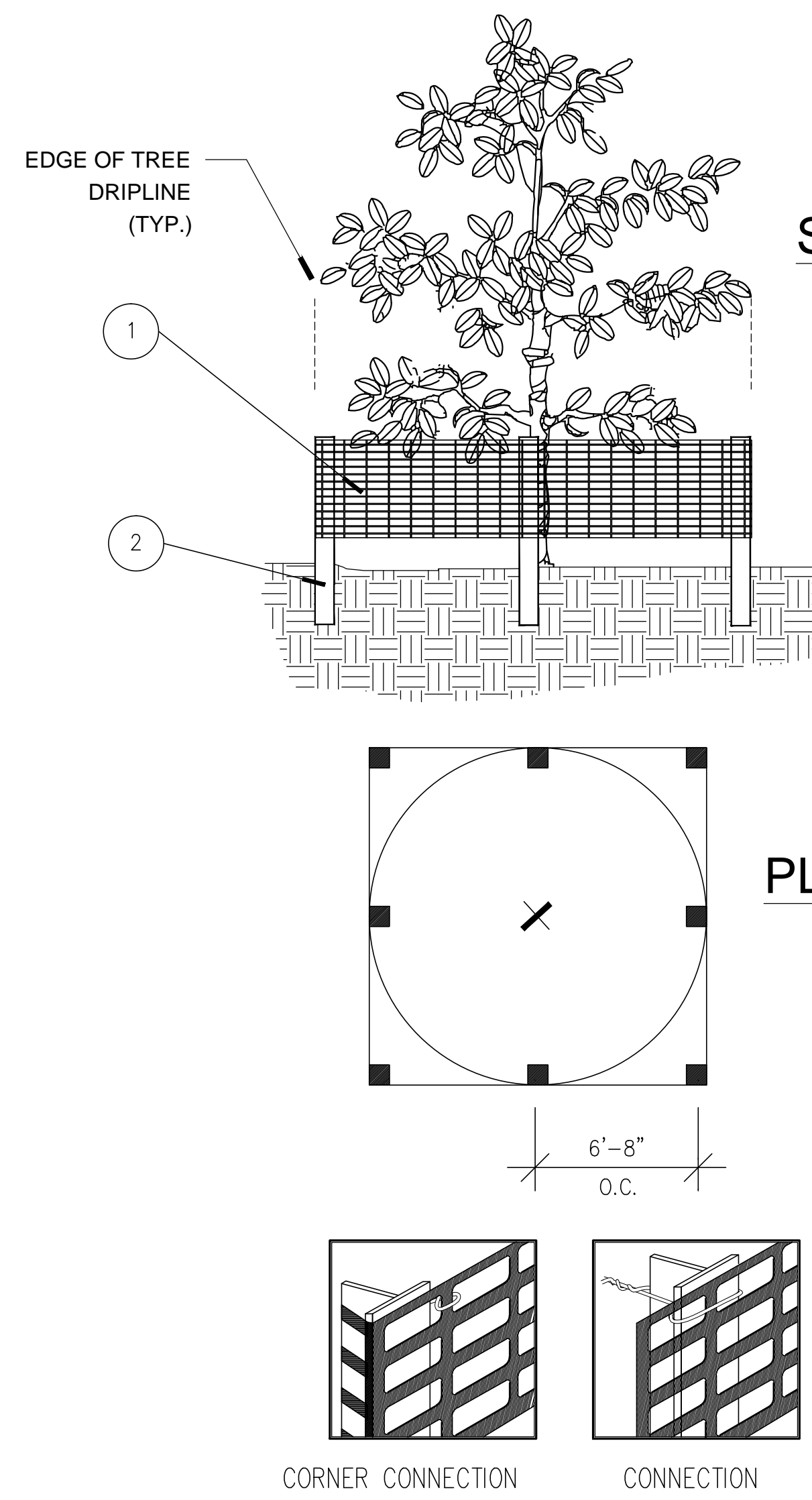
**NOTES:**

- \*PALMS OVER 35' HEIGHT, USE (4) 4X4 BRACING AND STAKES
- \*\*PALMS UNDER 35' HEIGHT, USE (4) 2X4 BRACING AND STAKES
- \*\*\*PALMS WITH SMALL TRUNKS, USE MIN. (3) 2X4 STAKES AND 1 1/4" BLACK WEBBING TAPE
- \*\*\*\*ROOT FLARE TO BE SLIGHTLY ABOVE FINAL GRADE



1. FINISH GRADE
2. BACKFILL WITH PREPARED PLANTING SOIL MIX AS SPECIFIED.
3. FILTER CLOTH, MIRAFI 500X OR BETTER
4. 12" CLEAN SAND, COMPACTED. ADJUST LAYER THICKNESS SO TOP OF ROOTBALL IS AT LEAST 1" ABOVE FINISHED GRADE.
5. SLOPE BOTTOM TO DRAIN
6.  $\pm 18"$   $\varnothing$  AUGERED HOLE PENETRATE THROUGH OCCLUDING LAYER TO WATER TABLE OR TO A DEPTH OF 7' TO ASSURE PROPER PERCOLATION.
7. BACKFILL WITH  $1/2"$  -  $3/4"$  GRAVEL.
8. WATER TABLE. (DEPTH VARIES)

NOTE:  
FOR A PARKING ISLAND  
PLANTING SITUATION,  
CONTRACTOR TO BACKFILL  
ENTIRE LENGTH OF PLANTING  
AREA TO WITHIN 6" OF BACK  
OF CURB OR EDGE OF  
PAVEMENT.

[illegible]