

**HOMAS**  
ENGINEERING GROUP

CIVIL ENGINEERS • PROJECT MANAGERS • LAND PLANNING • LANDSCAPE ARCHITECTS

100 CORPORATE DR. SUITE 600  
FT. LAUDERDALE, FL 33334  
P: 352-627-6000

4500 W. KENNEDY BLVD. SUITE 600  
TAMPA, FL 33609  
P: 813-979-4100

25 W. INDIANTOWN RD. SUITE 206  
JUPITER, FL 33468  
P: 561-265-7500

1000 N. W. 10TH AVE. SUITE 100  
MIAMI, FL 33136  
P: 305-581-1500

MEMBER INTERNATIONAL ASSOCIATION OF LANDSCAPE ARCHITECTS

REVISIONS:			
REV:	DATE:	COMMENT:	BY:
1		1	
2		2	
3		3	
4		4	
5		5	
6		6	
7		7	
8		8	
9		9	
10		10	
11		11	
12		12	
13		13	
14		14	
15		15	
16		16	
17		17	
18		18	
19		19	
20		20	
21		21	
22		22	
23		23	
24		24	
25		25	
26		26	
27		27	
28		28	
29		29	
30		30	
31		31	
32		32	
33		33	
34		34	
35		35	
36		36	
37		37	
38		38	
39		39	
40		40	
41		41	
42		42	
43		43	
44		44	
45		45	
46		46	
47		47	
48		48	
49		49	
50		50	
51		51	
52		52	
53		53	
54		54	
55		55	
56		56	
57		57	
58		58	
59		59	
60		60	
61		61	
62		62	
63		63	
64		64	
65		65	
66		66	
67		67	
68		68	
69		69	
70		70	
71		71	
72		72	
73		73	
74		74	
75		75	
76		76	
77		77	
78		78	
79		79	
80		80	
81		81	
82		82	
83		83	
84		84	
85		85	
86		86	
87		87	
88		88	
89		89	
90		90	
91		91	
92		92	
93		93	
94		94	
95		95	
96		96	
97		97	
98		98	
99			



PROJECT No.: F140147  
DRAWN BY: JFV  
CHECKED BY: MAT  
CAD I.D.: F140147-UTILITY PLAN

PROJECT:

**5485 WEST  
ATLANTIC BOULEVARD**

FO



MARGATE, FL



**RADICE III**  
1000 CORPORATE DRIVE, SUITE 250  
FORT LAUDERDALE, FL 33334  
PH: (954) 202-7000  
FX: (954) 202-7070  
[www.ThomasEngineeringGroup.com](http://www.ThomasEngineeringGroup.com)

MICHAEL A. TRÖXELL

PROFESSIONAL ENGINEER  
December 13, 2016  
FLORIDA LICENSE No. 50572  
FLORIDA BUSINESS CERT. OF AUTH. No. 27528

SHEET TITLE:

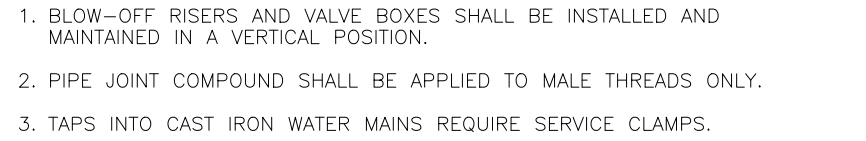
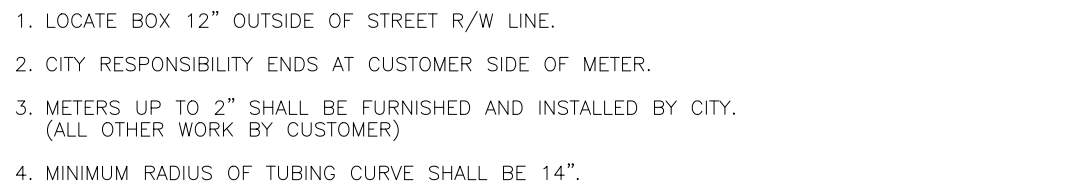
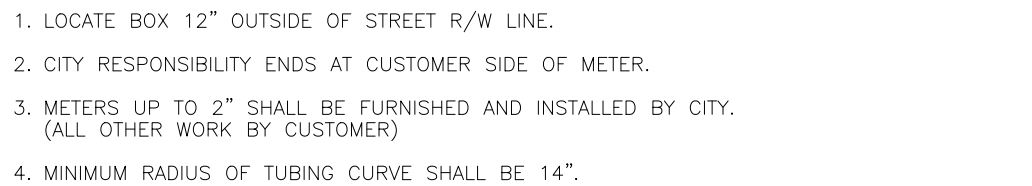
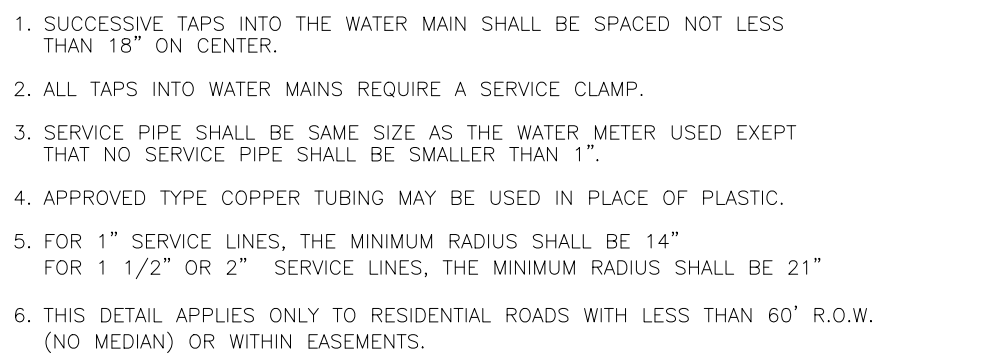
**UTILITY  
PLAN**

SHEET NUMBER: \_\_\_\_\_

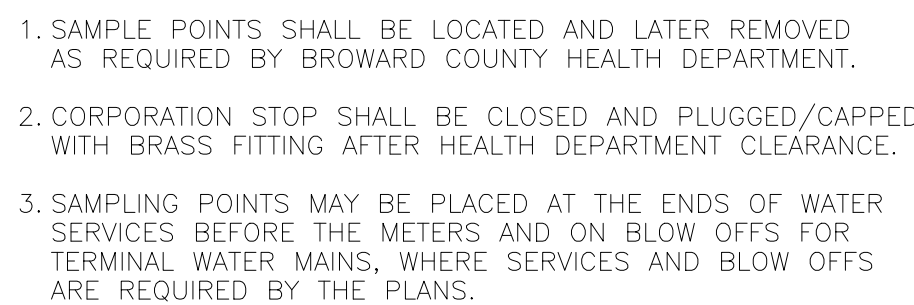
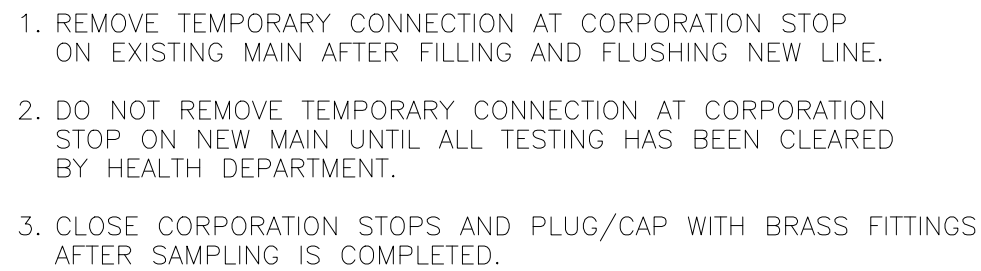
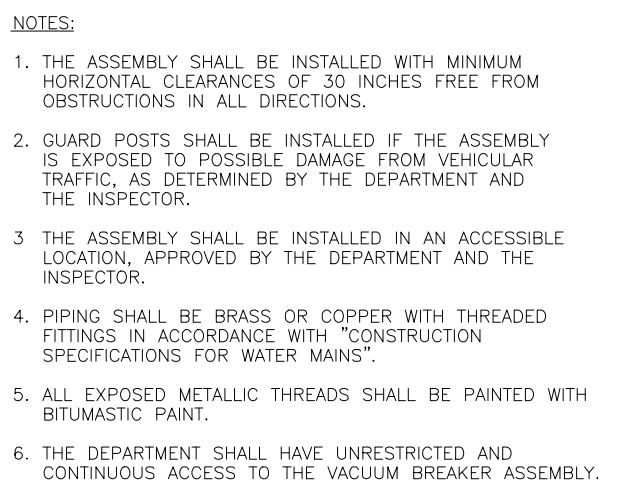
# CFG07.0

DATE: 12-01-2016





## WATER SERVICE CONNECTION DETAIL



### FIRE HYDRANT DETAIL

PRESSURE VACUUM BREAKER  
(IRRIGATION SYSTEM ONLY)

VALVE COLLAR AND  
IDENTIFICATION MARKER DETAIL

### FILLING AND FLUSHING DETAIL

### SAMPLING POINT DETAIL

REVISIONS:

PROJECT No.:	F140147
DRAWN BY:	JFV
CHECKED BY:	MAT
CAD I.D.:	F140147-UTILITY DETAILS

PROJECT:

**5485 WEST  
ATLANTIC BOULEVARD**



MARGATE, FL



1000 CORPORATE DRIVE, SUITE 250  
FORT LAUDERDALE, FL 33334  
PH: (954) 202-7000  
FX: (954) 202-7070  
[www.ThomasEngineeringGroup.com](http://www.ThomasEngineeringGroup.com)

MICHAEL A. TRÖXELL

PROFESSIONAL ENGINEER  
December 13, 2016  
FLORIDA LICENSE No. 50572  
FLORIDA BUSINESS CERT. OF AUTH. No. 27528

SHEET TITLE:

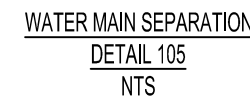
## UTILITY DETAILS

SHEET NUMBER: \_\_\_\_\_

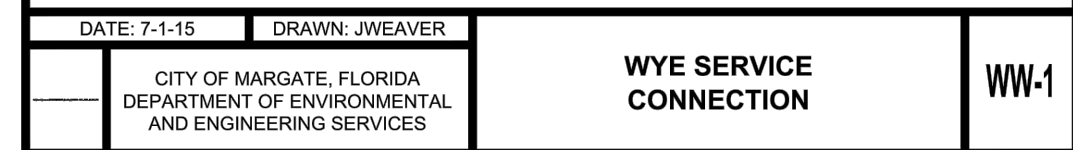
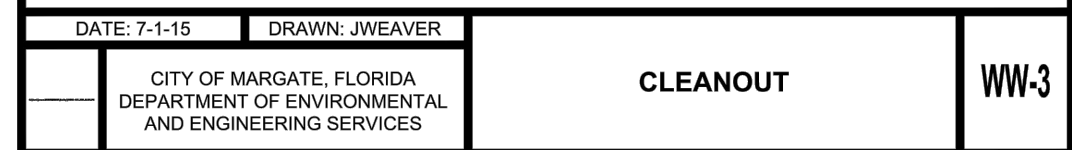
## CFG07.1

DATE: 10-31-2016





**SANITARY SEWER**  
4) 18" VERTICAL MINIMUM SEPARATION REQUIRED BY WWS, UNLESS OTHERWISE APPROVED.



N.T.S.

REVISIONS:			
REV:	DATE:	COMMENT:	BY:



PROJECT No.:	F140147
DRAWN BY:	JFV
CHECKED BY:	MAT
CAD I.D.:	F140147-UTILITY DETAILS

PROJECT:

**5485 WEST  
ATLANTIC BOULEVARD**



MARGATE, FL



**RADICE III**  
1000 CORPORATE DRIVE, SUITE 250  
FORT LAUDERDALE, FL 33334  
PH: (954) 202-7000  
FX: (954) 202-7070  
[www.ThomasEngineeringGroup.com](http://www.ThomasEngineeringGroup.com)

MICHAEL A. TRÖXELL

**PROFESSIONAL ENGINEER**  
December 13, 2016  
FLORIDA LICENSE No. 50572  
FLORIDA BUSINESS CERT. OF AUTH. No. 27528

SHEET TITLE:

**UTILITY  
DETAILS**

SHEET NUMBER:  
**CFG07.2**

DATE: 10-31-2016