

CONTRACTOR GENERAL CONDITIONS NOTES

1. RFIS- CONTRACTOR SHALL SUBMIT RFIS WITH HIS PROPOSED SOLUTION IN A TIMELY MANNER. CONTRACTOR RECOGNIZES THE CONSULTANT SHALL REQUIRE UP TO 5 WORKING DAYS TO RESPOND.

2. SUBMITTALS AND PRODUCT DATA- CONTRACTOR SHALL PREPARE A SUBMITTAL SCHEDULE FOR APPROVAL BY THE A/E. CONTRACTOR RECOGNIZES THE CONSULTANT SHALL REQUIRE UP TO 10 WORKING DAYS TO REVIEW SUBMISSIONS. ALL SUBMITTALS, PRODUCT DATA, SHALL BE CLEARLY STAMPED AND INDICATED APPROVED BY THE CONTRACTOR PRIOR TO SUBMISSION TO THE CONSULTANT.

3. SHOP DRAWINGS- CONTRACTOR SHALL PREPARE A SHOP DRAWING SCHEDULE FOR APPROVAL BY THE A/E. CONTRACTOR RECOGNIZES THE CONSULTANT SHALL REQUIRE UP TO 10 WORKING DAYS TO REVIEW SHOP DRAWINGS. ALL SHOP DRAWINGS, SHALL BE CLEARLY STAMPED AND INDICATED APPROVED BY THE CONTRACTOR PRIOR TO SUBMISSION TO THE CONSULTANT.

4. LAYOUT AND COORDINATION DRAWINGS- CONTRACTOR SHALL PREPARE SCALED COMPREHENSIVE COORDINATED LAYOUT DRAWINGS, PROVIDE SECTIONS, GENERAL ARRANGEMENTS, ELEVATIONS INCLUDING ALL DISCIPLINES FOR HIS PROPOSED LAYOUT AND ROUTING PRIOR TO FABRICATION. SUBMIT TO OWNER AND A/E FOR REVIEW AND GENERAL CONFORMANCE. PROVIDE DRAWINGS THAT DEMONSTRATE VIA COORDINATED ELEMENTS AND SYSTEMS WITH STRUCTURE THAT CLEARLY INDICATE PROPOSED SYSTEMS WILL FIT, FUNCTION AS INTENDED, BE FREE OF INTERFERENCES AND CONFORM TO REQUIRED CODE AND MANUFACTURER WORKING AND MAINTENANCE CLEARANCES.

5. DEVIATIONS FROM BASIS FOR DESIGN SYSTEMS SHALL BE CLEARLY IDENTIFIED ON ALL SUBMISSIONS.

6. SUBSTITUTIONS:

A. CONTRACTOR SHALL PREPARE REQUESTS WITH COMPLETE COORDINATION INFORMATION, INCLUDE ALL CHANGES REQUIRED IN OTHER ELEMENTS OF THE WORK TO ACCOMMODATE THE SUBSTITUTION INCLUDING WORK PERFORMED BY THE OWNER AND THE SEPARATE CONTRACTORS.

B. PROVIDE COMPLETE SUPPORTING DATA QUALIFYING THE SUBSTITUTION COMPARED TO THE BASIS OF DESIGN SYSTEM. PROVIDE A DETAILED LIST OF ANY VARIANCES, LIGHTING POWER DENSITY (LPD) SPACE BY SPACE CALCULATIONS, SPACE OR ROOM PHOTOMETRICS, PHYSICAL OR SPATIAL LAYOUTS, ELEVATIONS, ETC. TO THE BASIS OF DESIGN.

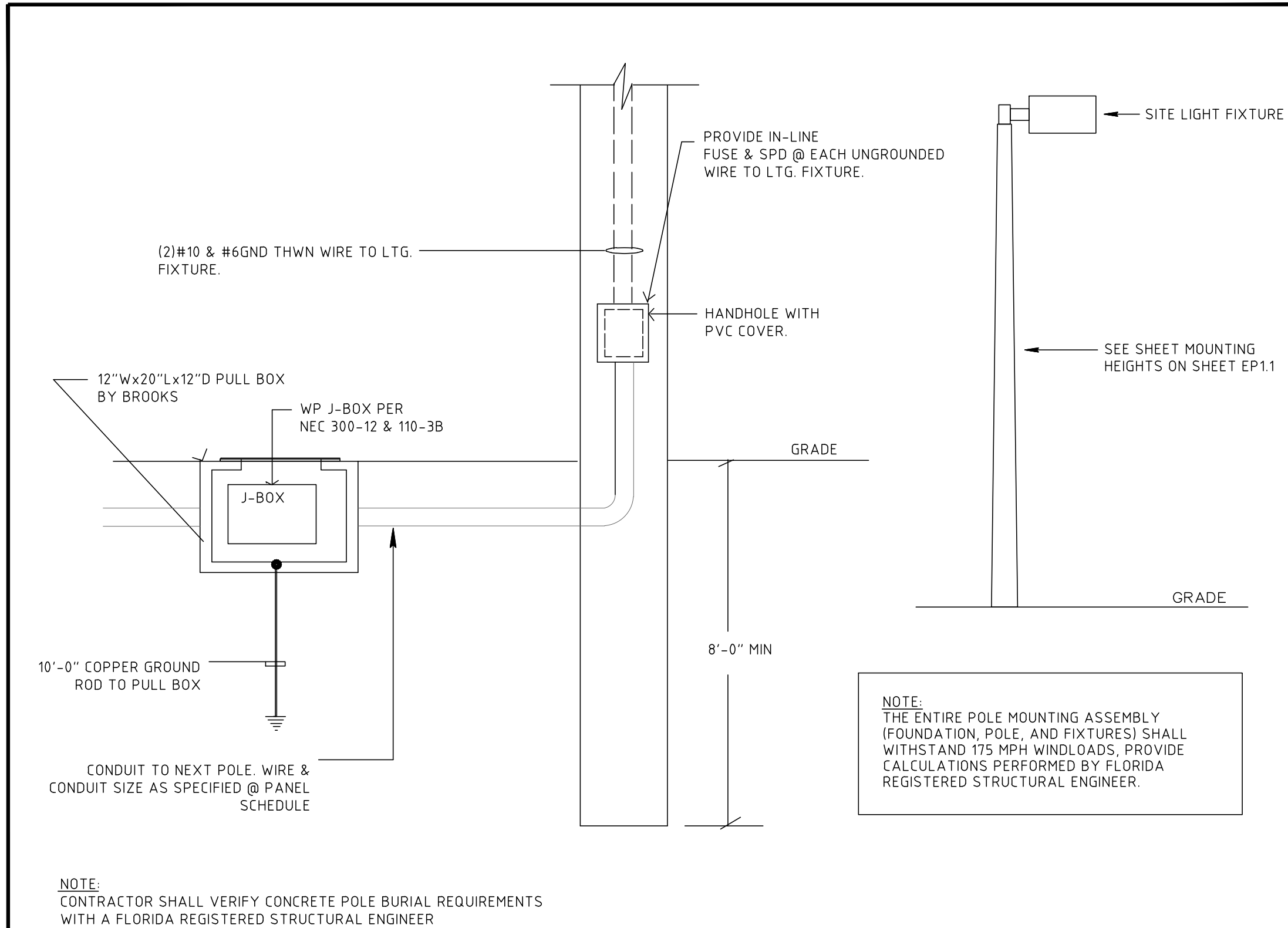
C. PROVIDE A STATEMENT INDICATING THE EFFECT THE SUBSTITUTION WILL HAVE ON THE WORK SCHEDULE IN COMPARISON TO THE SCHEDULE WITHOUT APPROVAL OF THE PROPOSED SUBSTITUTION, INCLUDE INFORMATION REGARDING THE EFFECT OF THE PROPOSED SUBSTITUTION ON THE CONTRACT TIME.

D. PROVIDE CERTIFICATION BY THE CONTRACTOR TO THE EFFECT THAT, IN THE CONTRACTOR'S OPTION, AFTER THOROUGH EVALUATION, THE PROPOSED SUBSTITUTION WILL RESULT IN WORK THAT IN EVERY SIGNIFICANT RESPECT IS EQUAL TO OR BETTER THAN THE WORK REQUIRED BY THE CONTRACTOR DOCUMENTS AND THAT IT WILL PERFORM ADEQUATELY IN THE APPLICATION INDICATED.

E. CONSULTANT'S EXPENSES THAT ARE INCURRED DUE TO REVISIONS OR SUBSTITUTIONS REQUESTED BY THE CONTRACTOR OR APPROVED BY THE OWNER SHALL BE COMPENSATED TO THE CONSULTANT BY THE CONTRACTOR.

7. AS BUILDS- THE CONTRACTOR SHALL MAINTAIN AND PREPARE A COMPLETE AND ACCURATE SET OF AS BUILDS DURING THE PROJECT AND ISSUE TO THE A/E AND OWNER AT PROJECT CLOSEOUT. DURING THE COURSE OF THE PROJECT, THE CONTRACTOR SHALL DOCUMENT, ISSUE SKETCHES OR SCALED DRAWINGS FOR FIELD CHANGES THAT ARE PROPOSED OR MADE WHICH VARY FROM THE BASIS OF DESIGN. CONSULTANT EXPENSES THAT ARE INCURRED DUE TO SERVICES OR REVISIONS REQUIRED BY BUILDING DEPARTMENT, OWNER, CONTRACTOR, MANUFACTURER SHALL BE COMPENSABLE TO THE CONSULTANT BY THE CONTRACTOR.

8. INSTALLATION, TESTING AND BALANCING, START UP, COMMISSIONING AND PERFORMANCE TROUBLESHOOTING OF SYSTEMS- CONTRACTOR RECOGNIZES HE IS SOLELY RESPONSIBLE FOR PERFORMANCE AND COMPLETION OF THESE SERVICES AS PART OF THE PROJECT REQUIREMENTS. DURING THE COURSE OF THE PROJECT, THE CONTRACTOR SHALL DOCUMENT THE SERVICES COMPLETED TO THE OWNER AND A/E. CONSULTANT EXPENSES THAT ARE INCURRED DUE TO SUPPORTING SERVICES OR REVISIONS REQUIRED BY BUILDING DEPARTMENT, OWNER, CONTRACTOR, MANUFACTURER SHALL BE COMPENSABLE TO THE CONSULTANT BY THE CONTRACTOR.



DETAIL NO. 1

CONCRETE POLE DETAIL

NOT TO SCALE

GENERAL ELECTRICAL NOTES

- DO NOT SCALE THE ELECTRICAL DRAWING. REFER TO THE ARCHITECTURAL PLAN AND ELEVATIONS FOR EXACT LOCATION OF ALL EQUIPMENT AND CONFIRM WITH OWNERS REPRESENTATIVES. CONTRACTOR SHALL REFER TO THE ENTIRE SET OF CONTRACT DOCUMENTS FOR PROJECT COORDINATION.
- ALL WORK SHALL BE DONE IN ACCORDANCE WITH THE EDITIONS CURRENTLY ADOPTED BY THE LOCAL AUTHORITIES HAVING JURISDICTION OF THE FOLLOWING: THE NATIONAL ELECTRICAL CODE (NFPA 70), NFPA 72, NFPA 75, THE FIRE PREVENTION CODE INCLUDING NFPA 1 & NFPA 101, NFPA 110, AND THE FBC, AND THE FPFC.
- UNLESS OTHERWISE NOTED, ALL CONDUCTORS SHALL BE COPPER, WITH "THHN" INSULATION FOR SIZE #10 AND SMALLER. CONDUCTORS LARGER THAN #10 SHALL HAVE "THWN" INSULATION. ALL CONDUCTORS IN WET LOCATIONS MUST HAVE "THWN" INSULATION. ALL CONDUCTORS #10 AND SMALLER MAY BE SOLID. ALL CONDUCTORS #8 AND LARGER SHALL BE STRANDED. ALL CONDUCTORS MUST COMPLY WITH ARTICLE 310 OF THE NEC.
- OUTLET BOXES SHALL BE PRESSED STEEL IN DRY LOCATIONS, CAST ALLOY WITH THREADED HUBS IN WET LOCATIONS AND SPECIAL ENCLOSURES FOR OTHER CLASSIFIED AREAS.
- DISCONNECT SWITCHES SHALL BE H.P. RATED, HEAVY DUTY, QUICK MAKE, QUICK BREAK, WITH ENCLOSURES AS REQUIRED BY EXPOSURE.
- THESE PLANS DO NOT SHOW EVERY MINOR DETAIL OF CONSTRUCTION, THE CONTRACTOR IS EXPECTED TO FURNISH AND INSTALL ALL ITEMS FOR A COMPLETE ELECTRICAL SYSTEM AND MEET ALL REQUIREMENTS NECESSARY FOR EQUIPMENT TO BE PLACED IN PROPER WORKING ORDER.
- THE ELECTRICAL SYSTEM SHALL BE COMPLETELY AND EFFECTIVELY GROUNDING AS REQUIRED IN ARTICLE 250, NATIONAL ELECTRICAL CODE. THE GROUNDING SYSTEM SHALL BE TESTED AND SHALL BE PROVIDED TO MEASURE A MAXIMUM OF 5 OHMS. PROVIDE A COPY OF THE TEST REPORT TO ENGINEER.
- ALL MATERIALS SHALL BE NEW AND SHALL BEAR U.L. LABELS WHERE APPLICABLE.
- ALL WORK SHALL BE PERFORMED BY A LICENSED ELECTRICAL CONTRACTOR IN A FIRST CLASS WORKMANSHIP MANNER. THE COMPLETE SYSTEM SHALL BE FULLY OPERATIVE AND ACCEPTANCE BY ENGINEER/ARCHITECT MUST BE A CONDITION OF THE SUBCONTRACTOR.
- THE ELECTRICAL INSTALLATION SHALL MEET ALL STANDARD REQUIREMENTS OF POWER, LIGHT COMPANY, TELEPHONE COMPANY, AND BROADBAND PROVIDER.
- CIRCUITS SHOWN ON PLANS ARE TO DETERMINE LOAD DATA AND PANEL SIZE. THE CONTRACTOR SHALL PROVIDE CIRCUITS TO SUIT JOB CONDITIONS, BALANCE LOADS ON EACH PHASE.
- SEE NOTES ON PLANS FOR OTHER REQUIREMENTS.
- FURNISH AND INSTALL LIGHTING FIXTURES AND LAMPS AS CALLED FOR ON PLANS, OR AS SELECTED BY OWNER.
- ALL WORK SHALL BE COORDINATED WITH OTHER TRADES TO AVOID INTERFERENCE WITH THE PROCESS OF CONSTRUCTION.
- CORRECTION OF ANY DEFECTS SHALL BE COMPLETED WITHOUT ADDITIONAL CHARGE AND SHALL INCLUDE REPLACEMENT OR REPAIR OF ANY PHASE OF THE INSTALLATION WHICH MAY BE DAMAGED.
- ALL REQUIRED INSURANCE SHALL BE PROVIDED FOR PROTECTION AGAINST PUBLIC LIABILITY OF PROPERTY DAMAGE FOR THE DURATION OF THE WORK.
- CHECK ALL EQUIPMENT FOR PROPER VOLTAGE, PHASE, AND CURRENT BEFORE CONNECTION TO CIRCUITS AND START UP.
- ELECTRICAL CONTRACTOR SHALL CHECK AND VERIFY EQUIPMENT FURNISHED AGAINST THOSE SPECIFIED OR INTENDED AND REVISE BRANCH CIRCUITS AS MAY BE REQUIRED WITH PRIOR APPROVAL OF ENGINEER/ARCHITECT.
- ALL SYSTEMS AND ROUGH-IN SHALL BE CONCEALED IN FINISHED AREAS. COORDINATE WITH ARCHITECT.
- THE ELECTRICAL PORTION OF THE CONTRACT DOCUMENTS ARE COORDINATED WITH THE BASIS OF DESIGN EQUIPMENT SPECIFIED BY DIVISION 16 AND OTHER DIVISIONS. WHERE THE CONTRACTOR ELECTS TO SUBSTITUTE A PRODUCT IN LIEU OF PROVIDING THE DESIGN BASIS, AND SAID SUBSTITUTION IS ACCEPTED BY THE A/E AND OWNER, THE CONTRACTOR SHALL MAKE ALL CORRECTIONS TO THE ELECTRICAL SYSTEM NECESSARY IN ORDER TO ENSURE A COMPLETE AND OPERATIONAL INSTALLATION OF THE EQUIPMENT AT NO ADDITIONAL COSTS. WHERE THE CONTRACTOR'S DECISION TO SUBSTITUTE PRODUCTS OR MODIFY DESIGN REQUIRING A/E SERVICES, THE A/E RESERVES THE RIGHT TO REQUEST COMPENSATION FROM THE CONTRACTOR FOR SAID SERVICES.
- CONTRACTOR SHALL PROVIDE A CONTROLS TRADE SUBCONTRACTOR TO DESIGN AND INSTALL ALL CONTROLS TO MEET THE PROJECT REQUIREMENTS.

AIR CONDITIONING EQUIPMENT AND CONTROLS SPECIFICATION

- ELECTRICAL CONTRACTOR SHALL INSTALL ALL CONTROL RACEWAY (CONDUIT), WIRE INSTALLATION, CONNECTIONS ETC. IN ACCORDANCE WITH WIRING DIAGRAMS ON AIR EQUIPMENT.
- A/C / ELECTRICAL PLANS OR DIAGRAMS FURNISHED BY MANUFACTURER OF THE EQUIPMENT.
- ALL POWER WIRING FOR THE AIR CONDITIONING EQUIPMENT SHALL BE FURNISHED, INSTALLED AND CONNECTED UNDER THIS SECTION OF THE SPECIFICATION.
- MECHANICAL CONTRACTOR SHALL PROVIDE MOTOR STARTERS FOR ALL AIR CONDITIONING EQUIPMENT. ELECTRICAL CONTRACTOR SHALL PROVIDE ALL CONNECTIONS TO AIR CONDITIONING EQUIPMENT PER MANUFACTURERS SPECIFICATIONS.
- AIR CONDITIONING EQUIPMENT INCLUDES CONDENSER, COMPRESSOR AND FAN, FAN COIL UNITS, ELECTRICAL STRIP HEATER, THERMOSTAT, ETC.

SITE LIGHTING/PHOTOMETRIC NOTES

- COORDINATE AND VERIFY ALL SITE ELECTRICAL REQUIREMENTS WITH ARCHITECT PRIOR TO ANY CONSTRUCTION/ INSTALLATION.
- THE COMPLETE STREET LIGHTING POLE MOUNTED ASSEMBLY MUST WITHSTAND A MINIMUM 175 MPH WINDLOADS. CALCULATIONS AND FOUNDATION DESIGN BY CIVIL/STRUCTURAL ENGINEER.
- PROVIDE IN-LINE FUSES AT EACH POLE, ONE IN EACH HOT LEG.
- ALL SITE LIGHTING CONDUITS SHALL BE BURIED AT A MINIMUM OF 24" BELOW FINISHED GRADE.
- ALL SITE LIGHTING SHALL BE PHOTOCELL CONTROLLED UNLESS SPECIFIED OTHERWISE.

SITE POLE NOTE

WIND LOAD CALCULATIONS AND SITE POLE STRUCTURAL DETAILS ARE TO BE SUBMITTED TO THE BUILDING DEPARTMENT FOR APPROVAL PRIOR TO CONSTRUCTION. (BY CONTRACTOR AND HIS DELEGATED F.P.E. STRUCTURAL ENGINEER)

PRIOR TO SUBMITTING THE BID, THE CONTRACTOR SHALL FIELD VERIFY ALL EXISTING CONDITIONS AND INFORM THE ARCHITECT AND THE ENGINEER OF ANY DISCREPANCY BETWEEN THESE DOCUMENTS AND THE EXISTING CONDITIONS AND SHALL INCLUDE IN THE BID TO CORRECT THE SAME AS DIRECTED. THE ENGINEER AND THE ARCHITECT, ARE NOT RESPONSIBLE FOR ANY ADDITIONAL COSTS RESULTING FROM VERIFIABLE EXISTING CONDITIONS DISCOVERED AFTER CONTRACT HAS BEEN AWARDED. NO CHANGES SHALL BE MADE TO THESE PLANS WITHOUT PRIOR APPROVAL FROM THE ENGINEER OF RECORD. ALL CHANGES SHALL BE SUBMITTED FOR REVIEW PRIOR TO INSTALLATION. NOT FOR BID UNTIL PERMIT HAS BEEN ISSUED.

ELECTRICAL SHEET INDEX

SHEET #	DESCRIPTION
EP0.1	ELECTRICAL DETAILS & NOTES
EP1.1	ELECTRICAL PHOTOMETRIC PLAN

FBC NOTE

- CONTRACTOR SHALL COMPLY WITH FBC (C408.2.5.1). PROVIDE OWNER WITH A RECORD SET DRAWING OF COMPLETE INSTALLATION DRAWINGS.
- CONTRACTOR SHALL COMPLY WITH FBC (C408.2.5.2). PROVIDE OWNER WITH OPERATIONAL MANUALS AND MAINTENANCE MANUALS.

LIGHTING NOTES

- ELECTRICAL CONTRACTOR TO VERIFY IF ANY LIGHTING FIXTURES REQUIRE STEP-DOWN TRANSFORMERS. QUANTITY AND LOCATION OF THE TRANSFORMERS TO BE FIELD VERIFIED PRIOR TO CONSTRUCTION. CONSULT ARCHITECT FOR LOCATIONS PRIOR TO BIDDING. PROVIDE ALL TRANSFORMERS AND INCLUDE IN BID.
- ALL LIGHTING FIXTURES AND FANS TO BE SELECTED & LOCATED BY OWNER /ARCHITECT/INTERIOR DESIGNER, UNLESS OTHERWISE NOTED.
- ARCHITECT TO SET MOUNTING HEIGHTS FOR ALL FIXTURES WHERE APPLICABLE, UNLESS OTHERWISE NOTED.
- CONTRACTOR TO PROVIDE LUMINAIRES TO CONFORM TO ENERGY CODE, THERMAL ENVELOPE RATINGS.

FLORIDA BUILDING CODE 2014 CONFORMANCE

- CONTRACTOR TO PROVIDE ALL LABOR AND MATERIAL TO CONFORM TO FBC 2014 ENERGY COMPLIANCE, RELATED SECTIONS, AND STANDARDS.
- OWNER SHALL PROVIDE SERVICES OF AN INDEPENDENT COMMISSIONING AGENT(CXA) TO PREPARE FUNCTIONAL TEST PROCEDURES (DOCUMENT SYSTEMS PERFORMANCE, WITNESS CONTRACTOR TESTING), AS REQUIRED BY FBC FOR LIGHTING AND HVAC SYSTEMS.
- CONTRACTOR SHALL PROVIDE SERVICES TO TEST, BALANCE AND COMMISSION THE SYSTEM VIA AN INDEPENDENT AGENT FOR THE MECHANICAL SYSTEMS ENERGY PERFORMANCE.
- CONTRACTOR TO PROVIDE COMPLETE CERTIFICATIONS AND CHECKLISTS AS REQUIRED BY FBC FOR HIS WORK RESPONSIBILITIES.

VOLTAGE DROP NOTE

THE CONTRACTOR, AS PART OF HIS PRICING AND BIDDING, SHALL INCLUDE ALL LABOR, MATERIAL, EQUIPMENT AND TERMINATIONS, INCLUDING FPL AND UTILITY REQUIREMENTS FOR ALL CONDUCTORING AND TERMINATIONS, TO SATISFY THE PROJECT REQUIREMENTS. IT IS SOLELY THE CONTRACTOR'S RESPONSIBILITY TO VERIFY AND INCLUDE ALL HIS BRANCH CIRCUIT, FEEDER, AND SERVICE CONDUCTOR CONDUITING AND WIRING LENGTHS AND ROUTING BASED ON HIS PROPOSED INSTALLATION MEANS AND METHODS. WIRING LENGTHS, SHOWN AS THE BASIS OF DESIGN LENGTHS, ARE MERELY AN APPROXIMATION BY THE CONSULTANT. THE CONTRACTOR SHALL USE THOSE BASIS OF DESIGN CONDUCTOR LENGTHS AND WIRING SIZES AS THE, MINIMUM, NOT LIMITED TO, REQUIREMENTS FOR THE PROJECT BIDDING. THE CONTRACTOR, PRIOR TO BIDDING, SHALL CONFIRM ALL HIS PROPOSED LENGTHS, MAKE ANY AND ALL ADJUSTMENTS AS MAY IMPACT THE ELECTRICAL SYSTEMS AND EQUIPMENT FOR CODE COMPLIANCE AND CONSTRUCTABILITY, AND DOCUMENT ALL PROPOSED CHANGES AND ADJUSTMENTS TO THE ARCHITECT AS PART OF HIS BID RESPONSE. THE CONTRACTOR SHALL SUBMIT COMPLETE SCALED PROPOSED ROUTINGS FOR SERVICES AND FEEDERS, QUANTITIES AND CONDUCTORING, SECTIONS THRU BUILDING FOR RACKING, DUCTBANK CROSS SECTIONS FOR CLEARANCES AND COORDINATED AS FREE OF ALL INTERFERENCES, ETC. CONTRACTOR SHALL SUBMIT ALL DOCUMENTATION TO THE ARCHITECT FOR REVIEW NO LATER THAN 3 WEEKS AFTER NOTICE TO PROCEED.

UL LISTING AND NRTL CERTIFICATIONS NOTE

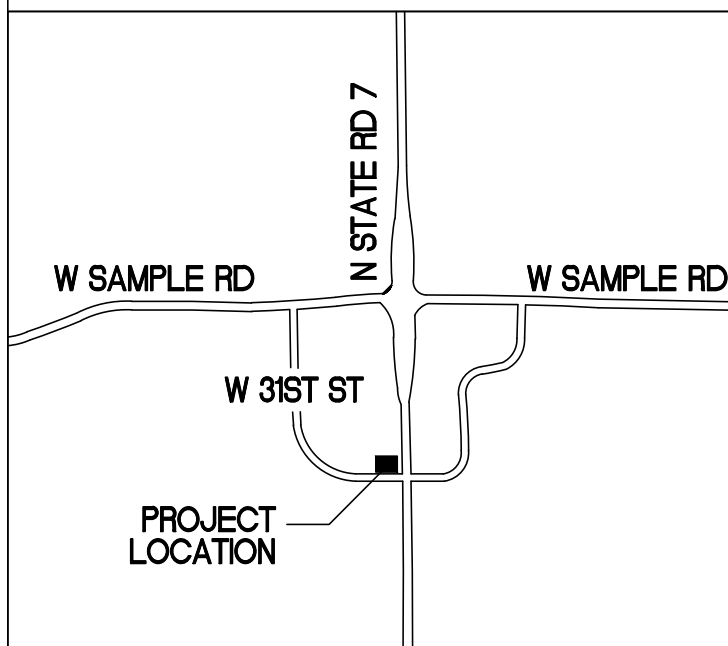
CONTRACTOR/MANUFACTURER SHALL PROVIDE COMPLETE DOCUMENTATION AND CERTIFICATIONS FOR ANY EQUIPMENT THAT HE PROPOSES WITH A NRTL (NATIONALLY RECOGNIZED TESTING LAB) LISTING AND LABELING EQUIVALENT TO THE BASIS OF DESIGN UL LISTING. IT IS THE CONTRACTOR'S RESPONSIBILITY TO CONFIRM ACCEPTABILITY BY THE LOCAL AHJ AND AGENCIES FOR THE NRTL LISTING AND CERTIFICATION FOR THE PRODUCTS HE PROPOSES AND DEMONSTRATE SUCH AS PART OF THE PRODUCT DATA SUBMISSION AND INSTALLATION.

PERMIT SET: 01/17/17

FAE
CONSULTING

300 LOCK ROAD, SUITE #302
DEERFIELD BEACH, FLORIDA 33442
TEL: (561) 391-9292 FAX: (561) 391-9898
CERTIFICATE OF AUTHORIZATION NO. 28107
URSULA IAPRANTE, P.E. LICENSE #73122
STEPHEN F. ROLLIN, P.E. LICENSE #26428
DONALD H. AUSTIN, JR., PE LICENSE #60651
E-MAIL: INFO@FAECONSULTING.COM
DESIGNED BY: KW PM: AN P/N 16147

LOCATION MAP



D.R.C.
SUBMITTAL
01.17.2017

RLC Architects

14 SE 4th Street, Boca Raton, FL 33432
Tel: 561 393 6555 Fax: 561 395 0007
www.rlcarchitects.com
STATE OF FLORIDA REGISTERED ARCHITECTS No. A2001060

THE DRAWINGS AND ALL THE IDEAS, ARRANGEMENTS, DESIGNS AND PLANS
HEREIN ARE THE PROPERTY OF RLC ARCHITECTS, P.A. AND ARE NOT TO BE
REPRODUCED OR TRANSMITTED IN ANY FORM OR BY ANY MEANS, ELECTRONIC OR
MECHANICAL, INCLUDING PHOTOCOPYING, RECORDING, OR BY ANY INFORMATION
SYSTEMS WITHOUT THE WRITTEN PERMISSION OF RLC ARCHITECTS, P.A.

**MARGATE RETAIL
BUILDING EXPANSION**

**3101 NORTH STATE ROAD 7
MARGATE, FLORIDA 33063**

REVISIONS

Drawing Title
**PHOTOMETRIC
DETAILS + NOTES**

Scale
Project No. 16147
Date 01/17/17

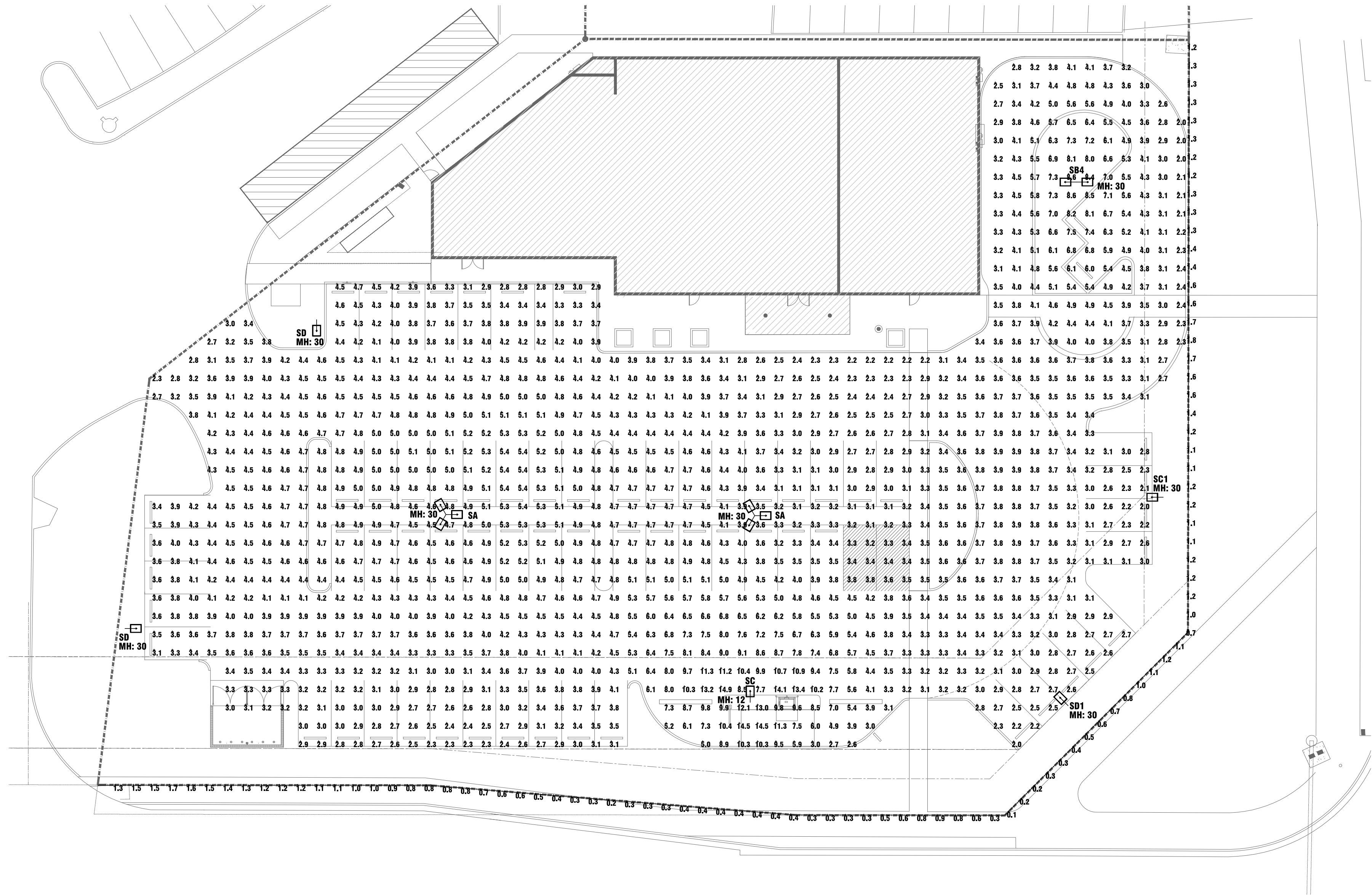
Principal: UI/SR
Project Director:
Project Manager: AN
Drafted by: KW
Checked by: SR


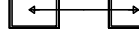

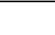
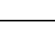

Sheet No.

EP0.1

1 SITE PHOTOMETRIC PLAN

EP1.1 SCALE: 1"=20'



Luminaire Schedule										
Project: MARGATE RETAIL - SITE - REV3 --- JAN - 16 - 2017										
Symbol	Qty	Label	Description	Lumens/Lamp	LLD	LDD	BF	LLF	Lum. Watts	Total Watts
	2	SA	PHILIPS GARDCO ECF-5-215LA-641A-NW POLE MOUNT 30' A.F.G.	N.A.	0.900	0.900	1.000	0.810	210.3	1261.8
	1	SB4	PHILIPS GARDCO ECF-2-215LA-641A-NW POLE MOUNT 30' A.F.G.	N.A.	0.900	0.900	1.000	0.810	210.7	421.4
	1	SC	PHILIPS GARDCO ECF-3-135LA-6470-NW POLE MOUNT 12' A.F.G.	N.A.	0.900	0.900	1.000	0.810	138.2	138.2
	1	SC1	PHILIPS GARDCO ECF-3-135LA-6470-NW-HS POLE MOUNT 30' A.F.G.	N.A.	0.900	0.900	1.000	0.810	138.4	138.4
	2	SD	PHILIPS GARDCO ECF-4-215LA-641A-NW POLE MOUNT 30' A.F.G.	N.A.	0.900	0.900	1.000	0.810	211.9	423.8
	1	SD1	PHILIPS GARDCO ECF-4-135LA-6470-NW-HS POLE MOUNT 30' A.F.G.	N.A.	0.900	0.900	1.000	0.810	138.1	138.1

Calculation Summary					
Project: MARGATE RETAIL - SITE - REV3 --- JAN - 16 - 2017					
Label	Avg	Max	Min	Avg/Min	Max/Min
SITE	4.23	14.9	2.0	2.12	7.45
SPILL - HORIZ, 6' AG	0.92	1.8	0.1	9.20	18.00
ATM	13.75	14.1	13.4	1.03	1.05

PRIOR TO SUBMITTING THE BID, THE CONTRACTOR SHALL FIELD VERIFY ALL EXISTING CONDITIONS AND INFORM THE ARCHITECT AND THE ENGINEER OF ANY DISCREPANCY BETWEEN THESE DOCUMENTS AND THE EXISTING CONDITIONS AND SHALL INCLUDE IN THE BID TO CORRECT THE SAME AS DIRECTED. THE ENGINEER AND THE ARCHITECT, ARE NOT RESPONSIBLE FOR ANY ADDITIONAL COSTS RESULTING FROM VERIFIABLE EXISTING CONDITIONS DISCOVERED AFTER CONTRACT HAS BEEN AWARDED. NO CHANGES SHALL BE MADE TO THESE PLANS WITHOUT PRIOR APPROVAL FROM THE ENGINEER OF RECORD. ALL CHANGES SHALL BE SUBMITTED FOR REVIEW PRIOR TO INSTALLATION. NOT FOR BID UNTIL PERMIT HAS BEEN ISSUED.

PERMIT SET: 01/17/17

300 LOCK ROAD, SUITE #302
DEERFIELD BEACH, FLORIDA 33442
TEL: (561) 391-9292 FAX: (561) 391-9898
CERTIFICATE OF AUTHORIZATION NO. 28107
URSULA IAPRANTE, P.E. LICENSE #73122
STEPHEN F. ROLLIN, P.E. LICENSE #36428
DONALD H. AUSTIN, JR., P.E. LICENSE #60651
JASON BARBER, P.E. LICENSE #73050
E-MAIL: INFO@FAECONSULTING.COM
DESIGNED BY: KW PM: AN P/N 16147

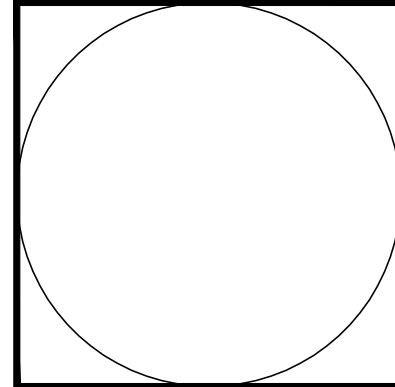
LOCATION MAP

D.R.C.
SUBMITTAL
01.17.2017

RLC Architects

14 SE 4th Street, Boca Raton, FL 33432
Tel: 561 393 0555 Fax: 561 395 0007
www.rlcarchitects.com
STATE OF FLORIDA REGISTERED ARCHITECTS No. A126001860

THE DRAWINGS AND ALL THE IDEAS, ARRANGEMENTS, DESIGNS, AND PLANS INDICATED HEREON ARE THE PROPERTY OF RLC ARCHITECTS, P.A. AND SHALL BE UTILIZED BY ANY PERSON, FIRM OR CORPORATION FOR ANY PURPOSE WITHOUT THE WRITTEN CONSENT OF RLC ARCHITECTS, P.A.



MARGATE RETAIL
BUILDING EXPANSION

3101 NORTH STATE ROAD 7
MARGATE, FLORIDA 33063

REVISIONS	

Drawing Title
SITE PHOTOMETRIC PLAN

Scale
Project No. 16147
Date 01/17/17

Principal: UI/SR
Project Director:
Project Manager: AN
Drafted by: KW
Checked by:

Sheet No.

EP1.1