

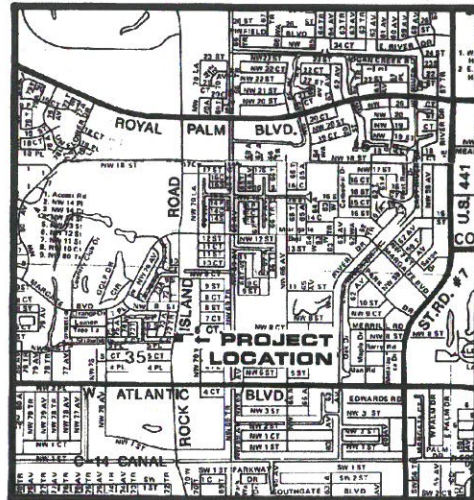
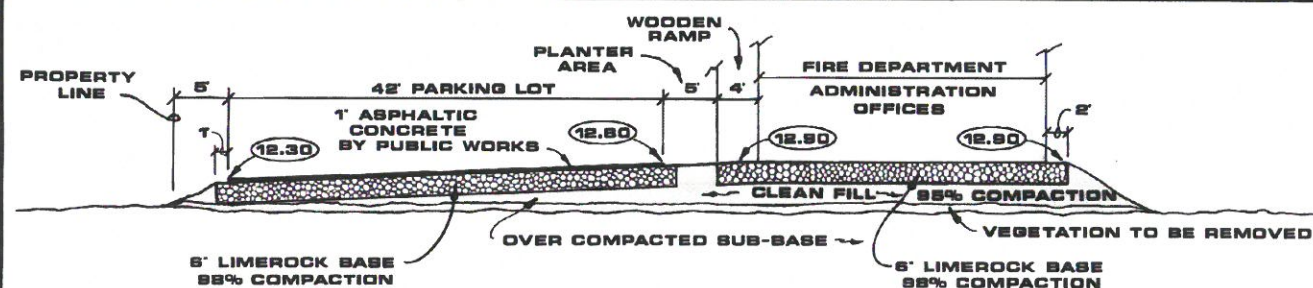
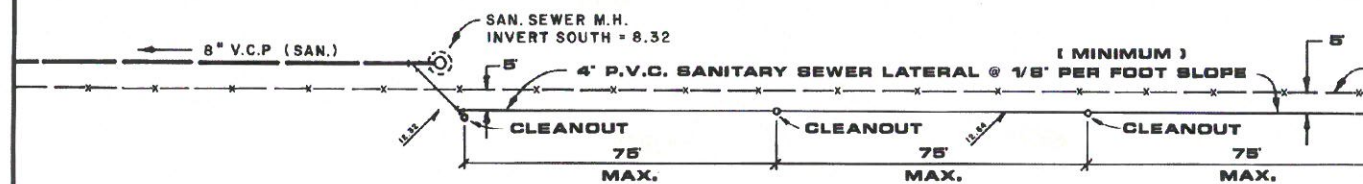
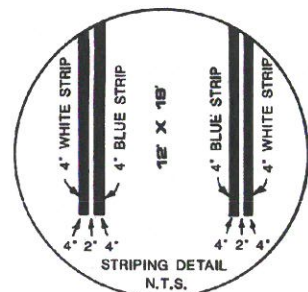


## GENERAL NOTES :

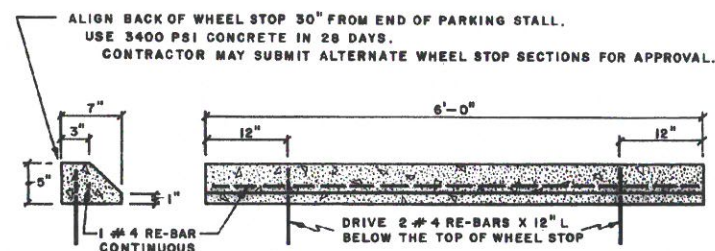
- 1.) LOCATION OF UNDERGROUND STRUCTURES SHOWN MAY BE INACCURATE AND OBSTRUCTIONS OTHER THAN THOSE SHOWN MAY BE ENCOUNTERED. THE CONTRACTOR SHALL HAVE NO CLAIM FOR DELAY OR EXTRA COMPENSATION DUE TO INACCURACY OF INFORMATION REGARDING OBSTRUCTIONS EITHER REVEALED OR NOT REVEALED BY THE DRAWINGS.
- 2.) PRIOR TO OPENING AN EXCAVATION, EFFORT SHALL BE MADE TO DETERMINE WHETHER UNDERGROUND INSTALLATIONS, I.E., SEWER, WATER, FUEL, ELECTRIC LINES, ETC., WILL BE ENCOUNTERED, AND IF SO, WHERE SUCH UNDERGROUND INSTALLATIONS ARE LOCATED. WHEN THE EXCAVATION APPROACHES THE APPROXIMATE LOCATION OF SUCH AN INSTALLATION, THE EXACT LOCATION SHALL BE DETERMINED BY CAREFUL PROBING AND/OR HAND DIGGING, AND WHEN IT IS UNCOVERED, ADEQUATE PROTECTION SHALL BE PROVIDED FOR THE EXISTING INSTALLATION. ALL KNOWN OWNERS OF UNDERGROUND FACILITIES IN THE AREA CONCERNED SHALL BE ADVISED OF PROPOSED WORK AT LEAST 48 HOURS PRIOR TO THE START OF ACTUAL EXCAVATION.

## SPECIFIC CONDITIONS :

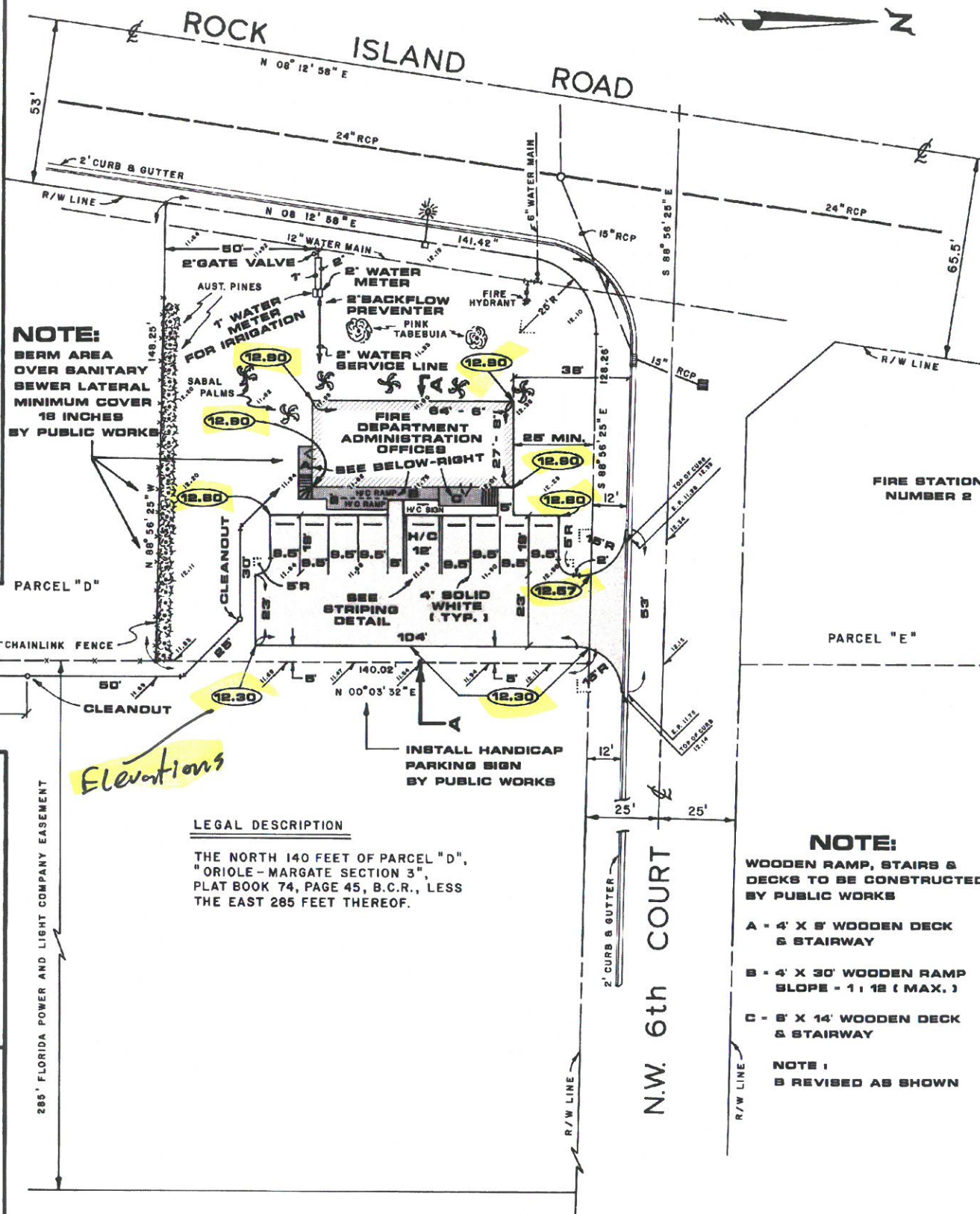
- 1.) IT IS THE CONTRACTOR'S RESPONSIBILITY TO VISIT THE SITE TO DETERMINE THE NECESSARY MANPOWER AND EQUIPMENT TO PERFORM THE JOB AND DELIVER TO THE CITY A FINISH PRODUCT.
- 2.) ALL QUANTITIES OF MATERIAL NEEDED TO COMPLETE THE JOB ARE APPROXIMATE. IT IS THE RESPONSIBILITY OF THE CONTRACTOR TO VERIFY THIS INFORMATION FROM THE PLANS.
- 3.) PROJECT IS TO BE BIDDED ON A "LUMP SUM" BASIS, INCLUDING RESTORATION & CLEAN-UP. NO ADDITIONAL COMPENSATION WILL BE PAID UNLESS APPROVED BY THE CITY, IN WRITING, PRIOR TO ITS INSTALLATION. ALL AREA AND OTHER UTILITIES, DAMAGED DURING CONSTRUCTION WILL BE RESTORED TO ITS ORIGINAL CONDITION OR BETTER.
- 4.) REGRADE AROUND ALL NEW ASPHALT (5' BEYOND EDGE OF PAVEMENT) AND RESOD ALL DISTURBED AREAS. CONTRACTOR IS RESPONSIBLE FOR PROVIDING ADDITIONAL FILL AS NEEDED.
- 5.) ALL MATERIALS & CONSTRUCTION MUST BE IN CONFORMANCE WITH CITY OF MARGATE SPECIFICATIONS AND APPROVED BY THE CITY ENGINEER.

LOCATION SKETCH  
N.T.S.SECTION VIEW A - A  
N.T.S.

HANDICAP PARKING SPACE



WHEEL STOP DETAIL - N.T.S.



## NOTE:

BERM AREA  
OVER SANITARY  
SEWER LATERAL  
MINIMUM COVER  
18 INCHES  
BY PUBLIC WORKS

## LEGAL DESCRIPTION

THE NORTH 140 FEET OF PARCEL "D",  
"ORIOLE - MARGATE SECTION 3",  
PLAT BOOK 74, PAGE 45, B.C.R., LESS  
THE EAST 285 FEET THEREOF.

## NOTE:

WOODEN RAMP, STAIRS &  
DECKS TO BE CONSTRUCTED  
BY PUBLIC WORKS

- A - 4' X 8' WOODEN DECK  
& STAIRWAY
- B - 4' X 30' WOODEN RAMP  
SLOPE - 1:12 (MAX.)
- C - 5' X 14' WOODEN DECK  
& STAIRWAY

NOTE:  
B REVISED AS SHOWN

48 HOURS BEFORE DIGGING  
CALL TOLL FREE  
**1-800-432-4770**  
U.N.C.L.E. UNDERGROUND UTILITIES  
NOTIFICATION CENTER

**BENCH MARK** ELEVATION = 12.315  
BLUE PAINT MARK ON TOP OF CURB &  
GUTTER AT S.E. CORNER OF N.W. 6th  
COURT & ROCK ISLAND ROAD

## REVISIONS :

12/7/93  
REVISED WOOD RAMP AREA  
& PARKING ALIGNMENT



**CITY OF MARGATE**  
Department of Environmental  
and Engineering Services  
1001 West River Drive, Margate, Florida 33063  
(305) - 972-0828

**FIRE DEPARTMENT  
ADMINISTRATIVE OFFICES  
FINISHED ELEVATION PLAN**

DATE: OCT., 1993  
SCALE: 1" = 20'  
DRAWN BY: B.G.W.

SHEET NUMBER

2

OF 4