

Screening Above Ground Equipment

ALL ABOVE GROUND EQUIPMENT SHALL BE SCREENED ON 3 SIDES WITH 24" HT. COCOPLUM HEDGE MATERIAL PLANTED AS PER SPECIFICATION IN PLANT KEY. HEDGE MATERIAL QUANTITIES WILL VARY DEPENDING ON LOCATION AND SIZE OF EQUIPMENT AND MAY NOT BE SHOWN ON PLAN IF EQUIP. IS ADDED AT A LATER DATE. PROVIDE A 3' CLEAR ZONE BETWEEN EQUIPMENT AND HEDGE OR AS MAY BE REQUIRED BY UTILITY. EQUIPMENT INCLUDES, BUT IS NOT LIMITED TO, A/C CONDENSERS, UTILITY EQUIPMENT, MECHANICAL EQUIPMENT, TRANSFORMER BOX, VALVES, EXHAUST VENTS, ETC.

See LP-6 for Typical Lot Landscape  
Buildings 1-2-3-4-8-9-10-11-12-13-18-19  
See LP-7 for Typical Lot Landscape  
Buildings 5-6-7-14-15-16-17  
See LP-7 for Cabana Area Landscape Detail  
See LP-8 for Standard Planting Details & Notes

LANDSCAPE KEY PLAN



SCALE 1" = 80'

PLANT KEY

Quantity	Plan Symbol	Botanic Name / Common Name Specification	Degree of Drought Tolerance	Tree Category Canopy s.f.	Total Canopy s.f. Replacement
830	AD	Asparagus densiflorus 'Myers' / Foxtail Fern 12'-15" o.a., 24" o.c.	VERY		
400	AN	Annuals / Annuals selected seasonally by owner, quan. is bed s.f.	-		
52	CC*	Capparis cynophallophora / Jamaican Caper 36" ht. x 24" spr., full to ground	VERY		
36	CE*	Cococarpus Erectus / Green Buttonwood 12' ht. x 6' spr., 2.5" cal., balanced branching, 5' c.t.	VERY	Cat. 1 300 s.f.	10,800 s.f.
2	CES*	Cococarpus erectus sericeus / Silver Buttonwood 10' ht. x 6' spr., 5' c.t., multi-stem tree form	VERY	Cat. 2 150 s.f.	300 s.f.
24	CG	Clusia guttifera / Small Leaf Clusia 5' ht. x 3' spr., full to ground	VERY		
66	CH	Chamaedorea cataractarum / Cat Palm 36-42" ht. x 36" spr., full & dense	-		
2250	CI*	Chrysobalanus Icacoe "Red Tip" / Red Tip Cocoplum 24" ht. x 15" spr., 24" o.c.	VERY		
16	CN	Cocos Nucifera "Green Malayan" / Green Malayan Coconut Palm 4'-8" c.w., stagger heights in each grouping	VERY		
19	CP	Crinum procerum splendens / Queen Emma Lily 30" ht.	VERY		
30	CT	Cordyline fruticosa 'Kiwi' / Kiwi Ti Plant 36-42" ht. x 24-30" spr., min. 3 main stems, full	-		
97	CV-G	Codiaeum variegatum 'Gold Dust' / Gold Dust Croton 30" ht. x 24-30" spr., full	VERY		
59	CV-J	Codiaeum variegatum 'Johanna Coppinger' / JC Croton 30" ht. x 24-30" spr., full	VERY		
26	CV-R	Codiaeum variegatum 'Oak Leaf Red' / Oak Leaf Croton 30" ht. x 24-30" spr., full	VERY		
938	DT	Dianella tasmanica variegata / Variegated Flax Lily 12" o.a., full, 15" o.c.	VERY		
3	FD	Filicium decipiens / Japanese Fern tree 10' ht. x 6' spr., 5' c.t., standard	MOD	Cat. 3 100 s.f.	300 s.f.

PLANT KEY (cont.)

Quantity	Plan Symbol	Botanic Name / Common Name Specification	Degree of Drought Tolerance	Tree Category Canopy s.f.	Total Canopy s.f. Replacement
1040	FM	Ficus microcarpa 'Green Island' / Green Island Ficus 12" ht. x 15-18" spr., maintain at 24" ht.	-		
26	HR	Hibiscus Rosa-sinensis / Seminole Pink Hibiscus 24" ht. x 18" spr., 24" o.c.	MOD		
17	IC*	Ilex cassine / Dahoon Holly 10' ht. x 5' spr., 5' c.t., standard	MOD	Cat. 2 150 s.f.	2250 s.f.
453	IV*	Ilex Vomitoria 'Shellings Dwarf' / Dwarf Yaupon Holly 10-12" ht. x 15" spr., 15" o.c.	VERY		
1334	JV	Jaminum volubile / Wax Jasmine 10-12" ht. x 15" spr., 24" o.c.	MOD		
21	LJ	Ligustrum Japonicum / Japanese Privet 10' ht. x 6' spr., 5' c.t., multi-stem tree form	VERY	Cat. 3 100 s.f.	2100 s.f.
14	LL*	Lysiloma Latisiliqua / Lysiloma 12" ht. x 6.5" spr., 2.5" cal., 5' c.t.	VERY	Cat. 1 300 s.f.	4200 s.f.
1613	MF-1*	Myrcianthes Fragrans / Simpson Stopper 24" ht. x 15" spr., 24" o.c.	VERY		
65	MF-2*	Myrcianthes Fragrans / Simpson Stopper 5' ht. x 3' spr., full & dense	VERY		
829	NE*	Neprolepis exaltata / Sword Fern 12" ht. x 12" spr., 24" o.c., Native sword fern	MOD		
3	PE-1	Ptychosperma elegans / Alexander Palm c.w. (bottom of crownshaft) ht. as noted on plan, single heavy trunk	VERY		
64	PE-2	Ptychosperma elegans / Alexander Palm 14-16" c.w. (bottom of crownshaft) ht., double heavy trunks	VERY		
2	PM	Podocarpus macrophyllus / Japanese Yew 5' ht. x 2.5-3' spr., full to ground	-		
2	PR	Phoenix roebelinii / Dwarf Date Palm 5' ht., double staggered trunks	VERY		
60	PS	Philodendron selloum / Selloum 24" ht., min. 2 heads per pot, 30" o.c.	VERY		
83	QV*	Quercus Virginiana 'Highrise' / 'Highrise' Live Oak 14" ht. x 6.5" spr., 2.5" cal., 5' c.t.	VERY	Cat. 1 300 s.f.	24,900 s.f.
12	RE	Roystonea Elata / Royal Palm g.w. ht. as noted on plan, heavy matched trunk character	VERY		

PLANT KEY (cont.)

Quantity	Plan Symbol	Botanic Name / Common Name Specification	Degree of Drought Tolerance	Tree Category Canopy s.f.	Total Canopy s.f. Replacement
160	RT	Coccoloba diversifolia / Pigeon Plum 10' ht. x 4-6' spr., 5' c.t.	VERY	Cat. 2 32@150 s.f.	4800 s.f.
		Conocarpus erectus sericeus / Silver Buttonwood* 10' ht. x 4-6' spr., 5' c.t.	VERY	Cat. 2 32@150 s.f.	4800 s.f.
		Ilex cassine / Dahoon Holly* 10' ht. x 4-6' spr., 5' c.t.	VERY	Cat. 2 32@150 s.f.	4800 s.f.
		Lagerstoeimia indica / Crape Myrtle 10' ht. x 4-6' spr., 5' c.t., 3 trunks varieties / color selection Muskogee - pink Natchez - white Tuscadora - dark pink	VERY	Cat. 3 32@100 s.f.	3200 s.f.
		Magnolia "Little Gem" / Little Gem Magnolia 10' ht. x 4-6' spr., 5' c.t.	VERY	Cat. 2 32@150 s.f.	4800 s.f.
88	SA	Schefflera Arboricola "Trinette" / Dwarf Schefflera 18" ht. x 12" spr., 24" o.c.	VERY		
29	SM*	Sweetenia Mahagonii / West Indies Mahogany 12' ht. x 6.5" spr., 2.5" cal., 5' c.t.	VERY	Cat. 1 300 s.f.	8700 s.f.
156	SP*	Sabal palmetto / Cabbage Palm c.t. ht. as noted on plan, WITH BOOTS	VERY		
25	TH	Tabebuia heterophylla / Pink Trumpet Tree 12" ht. x 6' spr., 2.5" cal., balanced branching, 5' c.t.	VERY	Cat. 2 150 s.f.	3750 s.f.
9	TI	Tabebuia impetiginosa / Purple Trumpet Tree 12" ht. x 6' spr., 2.5" cal., balanced branching, 5' c.t.	VERY	Cat. 2 150 s.f.	1350 s.f.
8	TR*	Thrinax Radiata / Florida Thatch Palm 4-5' ht., double staggered trunks	VERY		
1675	VS	Viburnum Suspensum / Sandankwa Viburnum 24" ht. x 15" spr., 24" o.c.	MOD		

NOTE - THE CONTRACTOR IS RESPONSIBLE TO VERIFY ALL QUANTITIES AND REPORT ANY DISCREPANCIES TO THE LANDSCAPE ARCHITECT.

\* = Florida Native

Drought tolerance noted is per SFWMD (May 2003) "Waterwise", South Florida Edition

Abbreviations:  
c.w. - clear wood  
g.w. - grey wood  
ht. - height  
o.a. - overall  
o.c. - on-center spacing  
spr. - spread

RELOCATED TREES KEY

4	rRE*	Roystonea elata / Royal Palm to be relocated from front entry area		
2	rDR	Delonix regia / Royal Poinciana to be relocated from front entry area	Cat. 1 300 s.f.	600 s.f.

NOTE  
Trees noted to be relocated are existing on site near the entry. The plan notes their final location after moving. See planting details LP-8 for typical planting requirements. The contractor shall provide watering for the relocated trees and palms as necessary during the re-establishment period.

LANDSCAPE TOTALS

	provided	
Trees (min. 10' ht. & above)	401	507
Palms (Cabbage, & Alexander counted 3:1)	106	
Shrubs (min. 24" ht. & above)	6162	
Native Trees & Palms (Cabbage Palms counted 3:1)	365	(72%)
Native Shrubs	3988	(67%)

CANOPY REPLACEMENT

Total Canopy removed per "Tree Disposition Plan" for Celebration Pointe South prepared by Witkin Hults Design Group dated 08-19-2015. 36,422 s.f.

Total Canopy to be replaced pursuant to this plan.\* 81,650 s.f.

\* = See Plant Key this sheet. Total replacement canopy does not include palms.

Landscape Plan  
Celebration Pointe South  
Margate  
Florida

Date 04-10-2017  
Scale As Noted  
PN# 1234

PREPARED BY

Steven E. Tate, R.L.A.  
Landscape Architect #967  
State of Florida  
For The Firm

DATE

Drawing No.  
LP-1  
OF 8

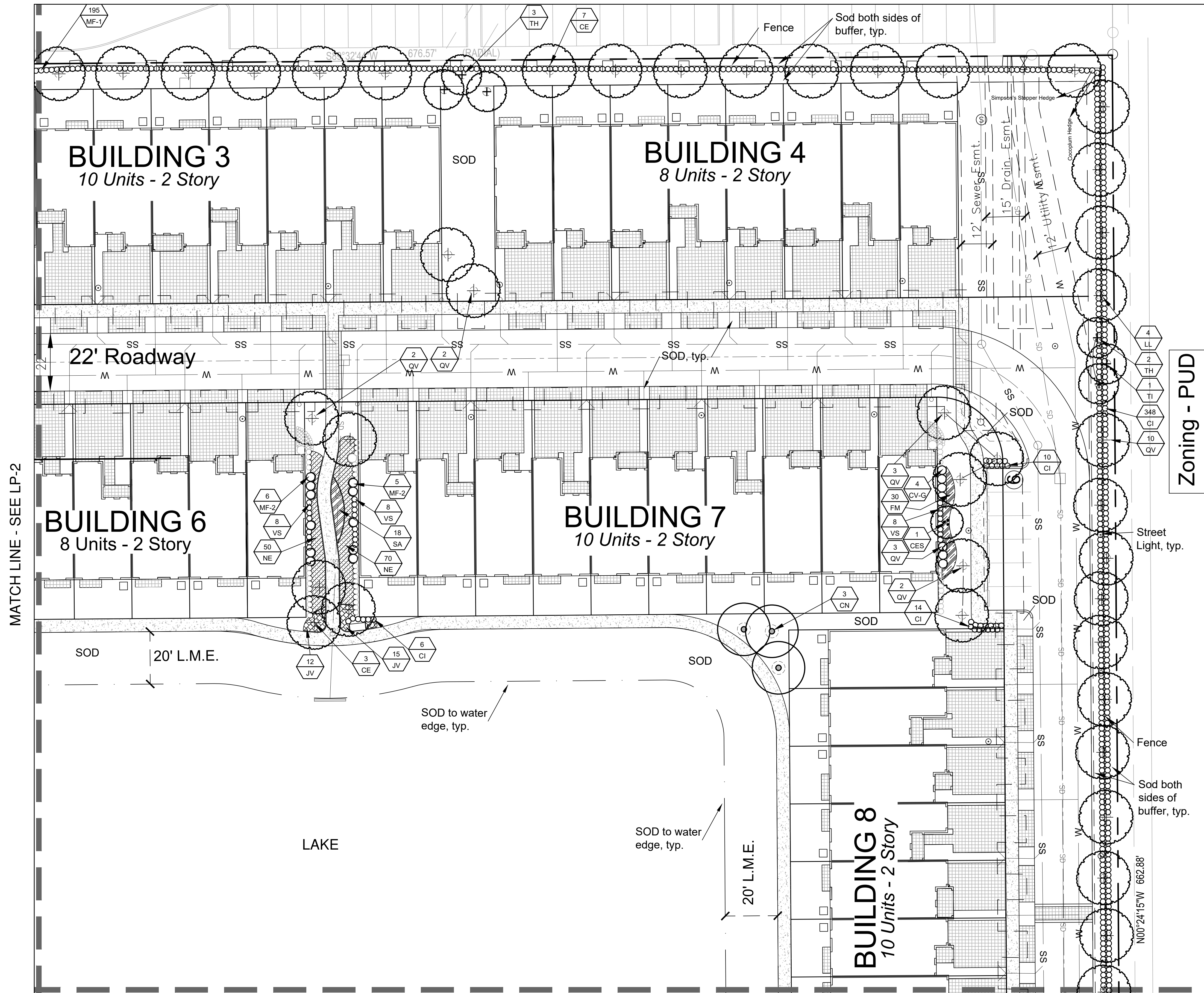
Revisions

Covelli Design Associates Inc.  
2295 NW Corporate Blvd., Suite 213  
Boca Raton, Florida 33431  
561-910-0330  
LC 26000287  
covellidesign.com  
Urban Planning • Landscape Architecture

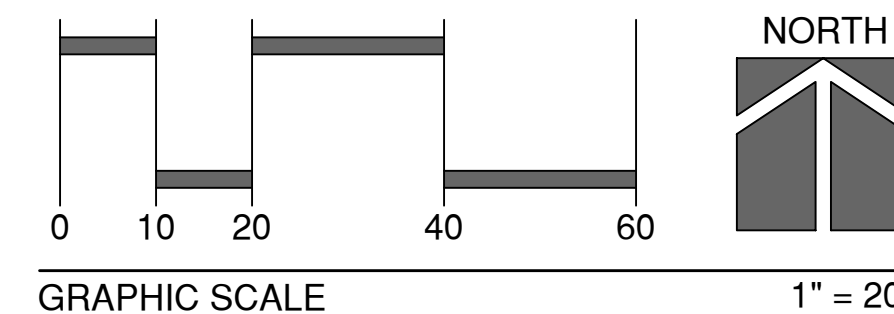








Zoning - PUD



See LP-1 for Plant Key  
See LP-8 for Standard Planting Details & Notes

Covelli  
Design  
Associates Inc.  
Urban Planning • Landscape Architecture  
2295 NW Corporate Blvd., Suite 213  
Boca Raton, Florida 33431  
561-910-0330  
LC 26000287  
covellidesign.com

Landscape Plan  
Celebration Pointe South  
Margate  
Florida

Date 04-10-2017  
Scale As Noted  
PN# 1234

PREPARED BY  
Steven E. Tate, R.L.A.  
Landscape Architect #967  
State of Florida  
For The Firm  
DATE

Drawing No.  
LP-3  
OF 8

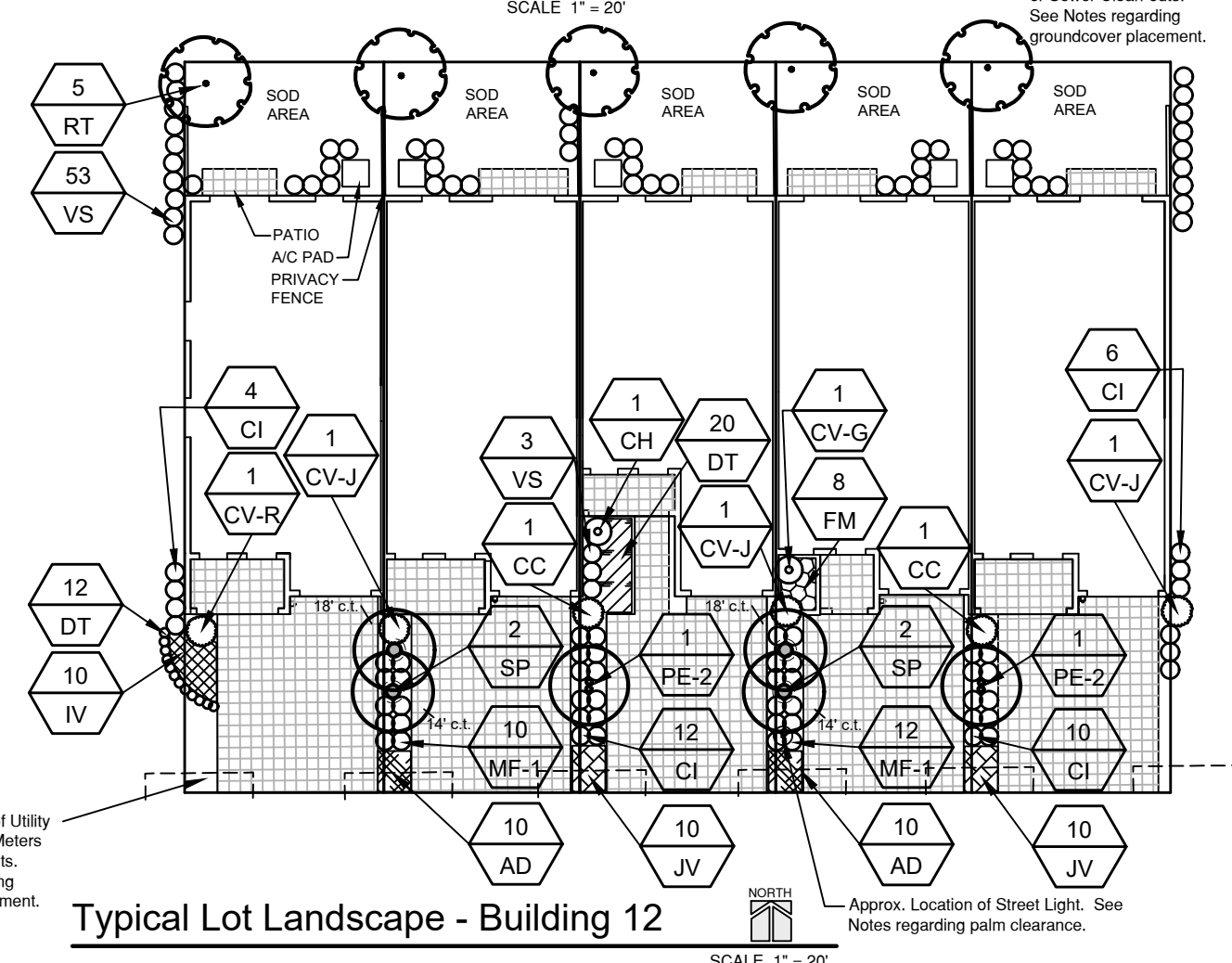
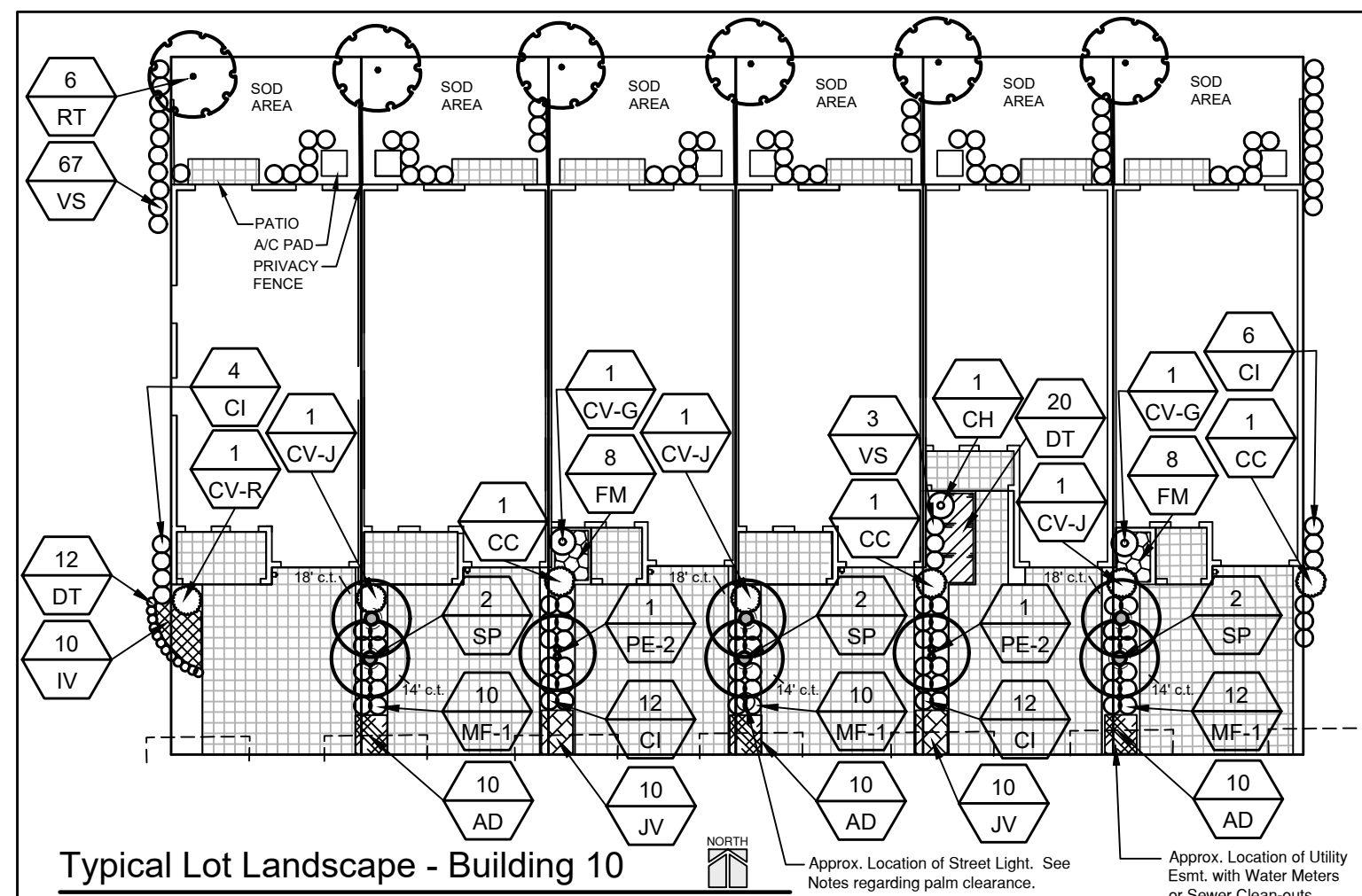
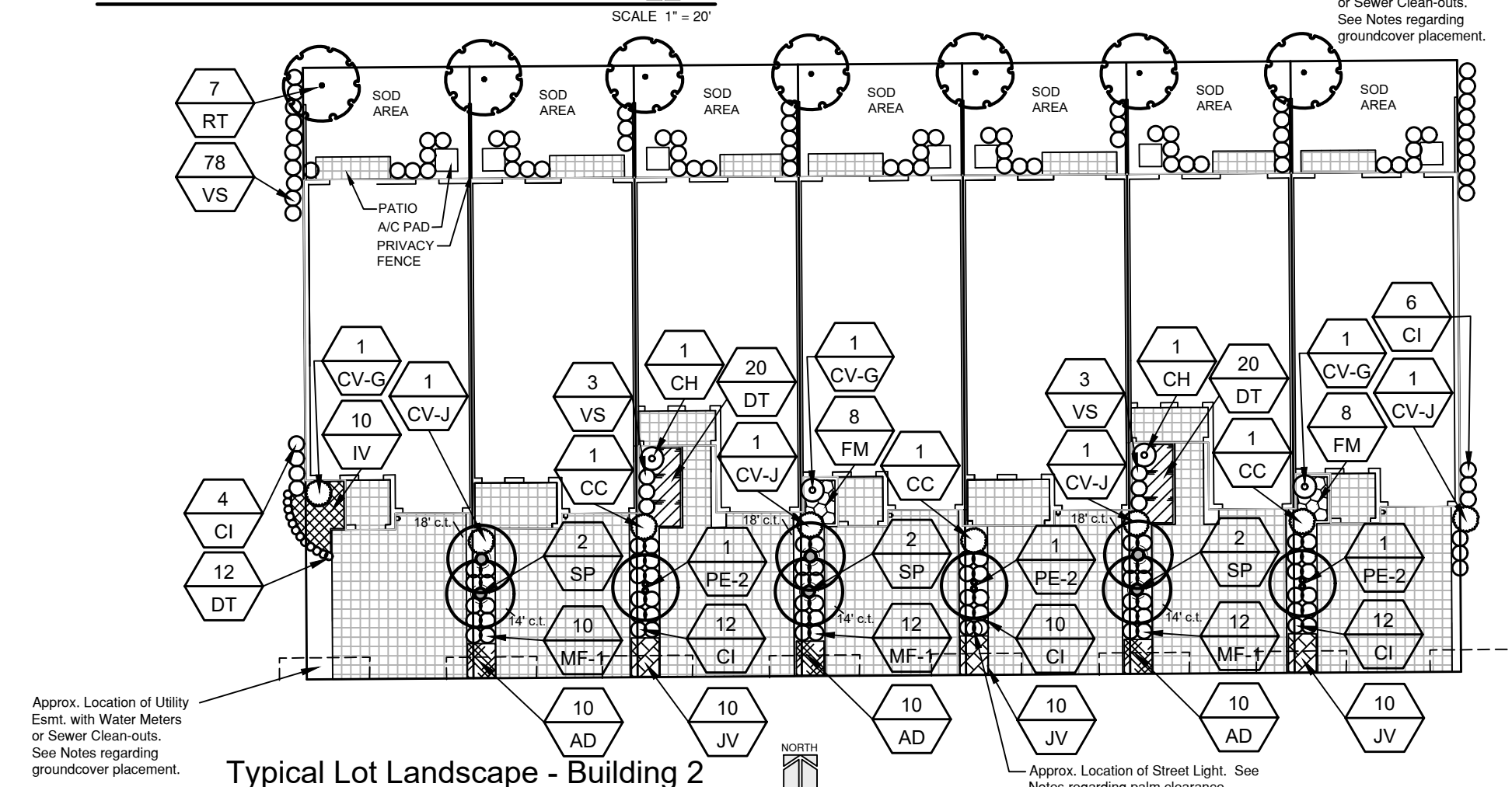
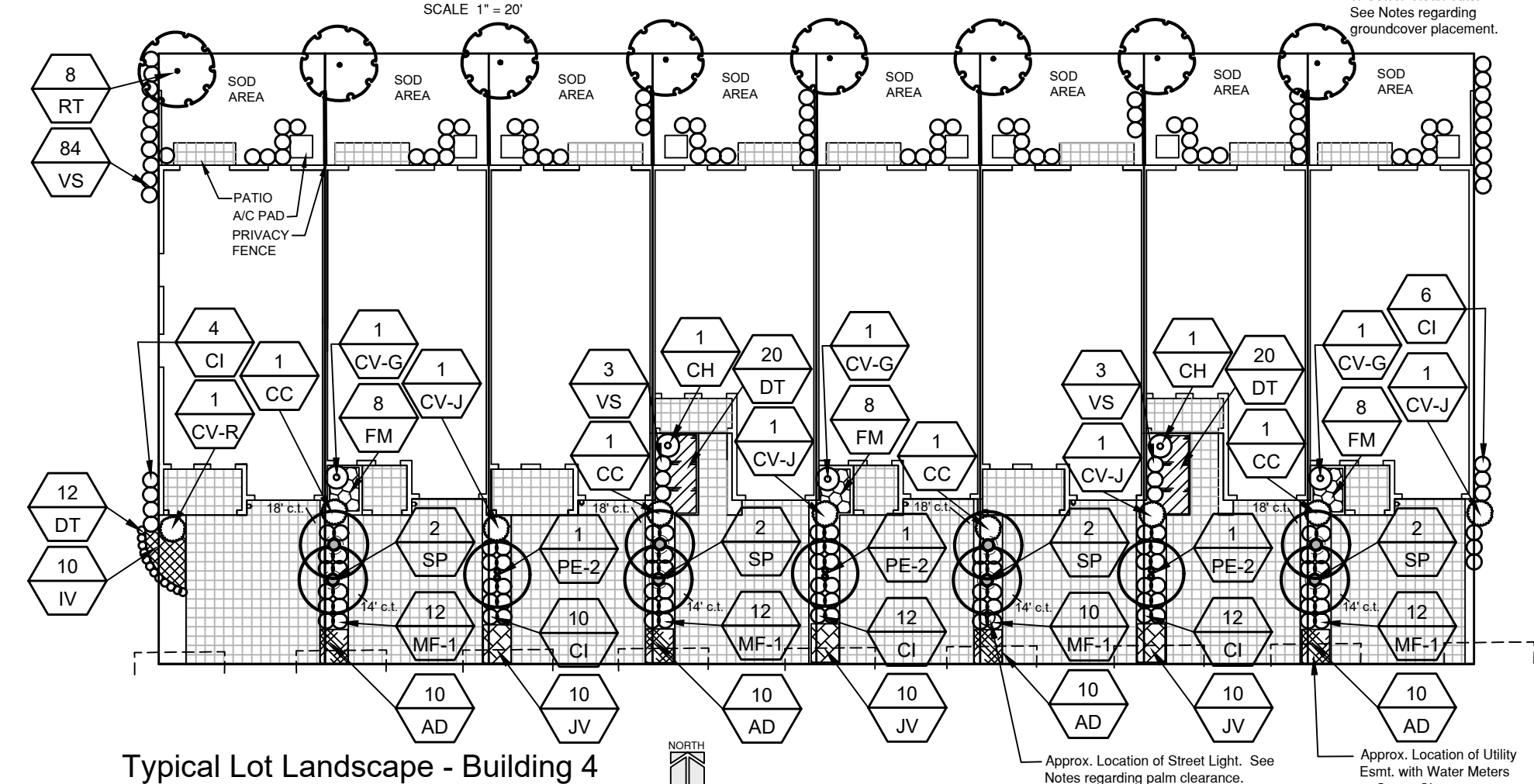
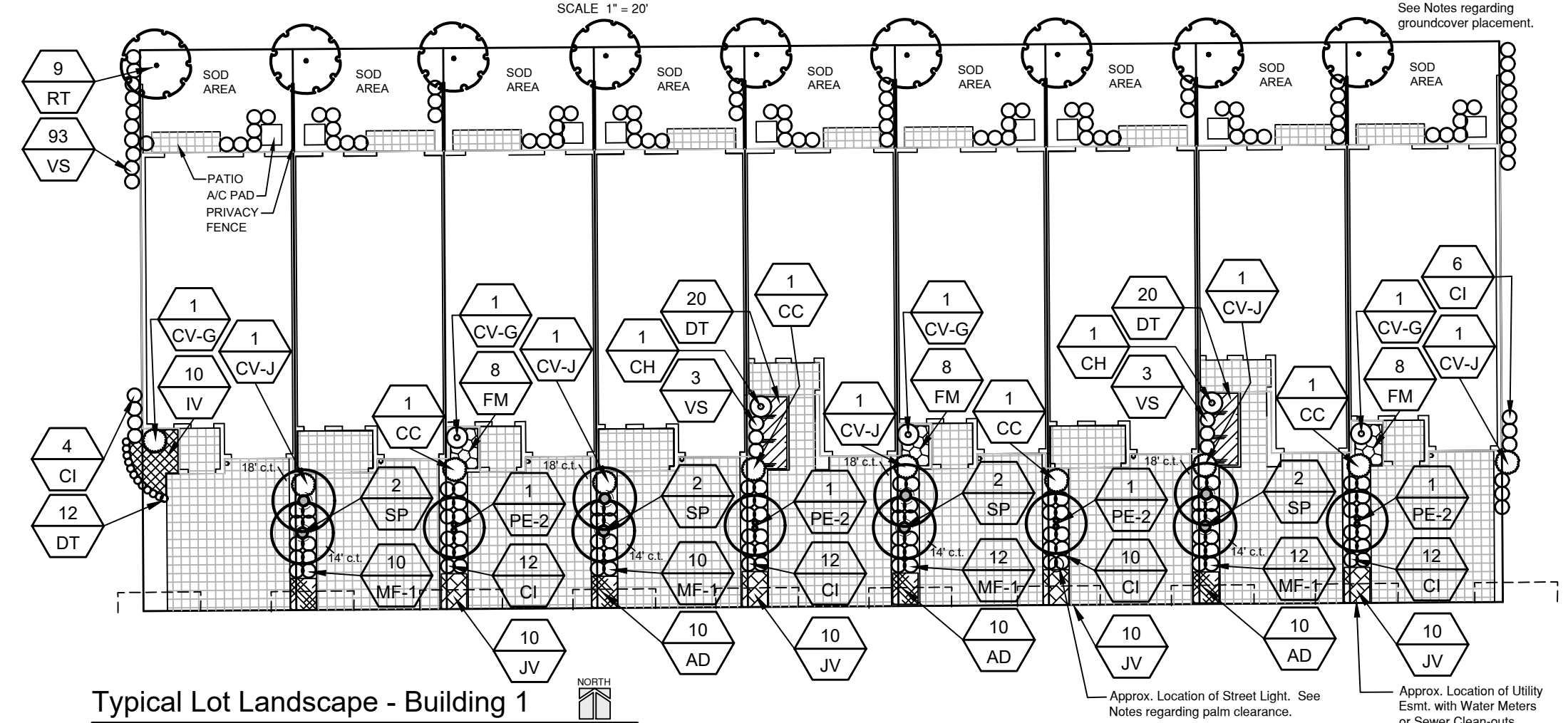
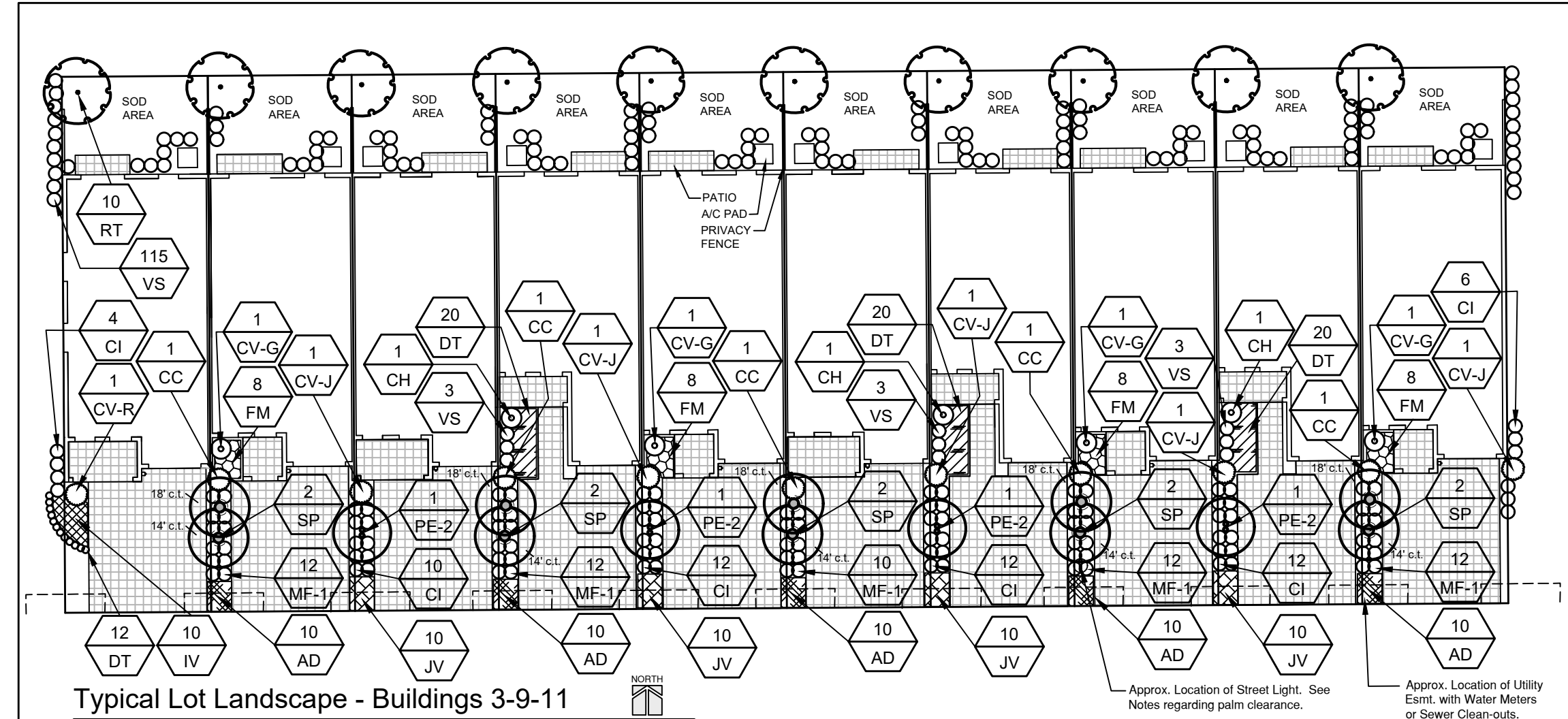
Revisions





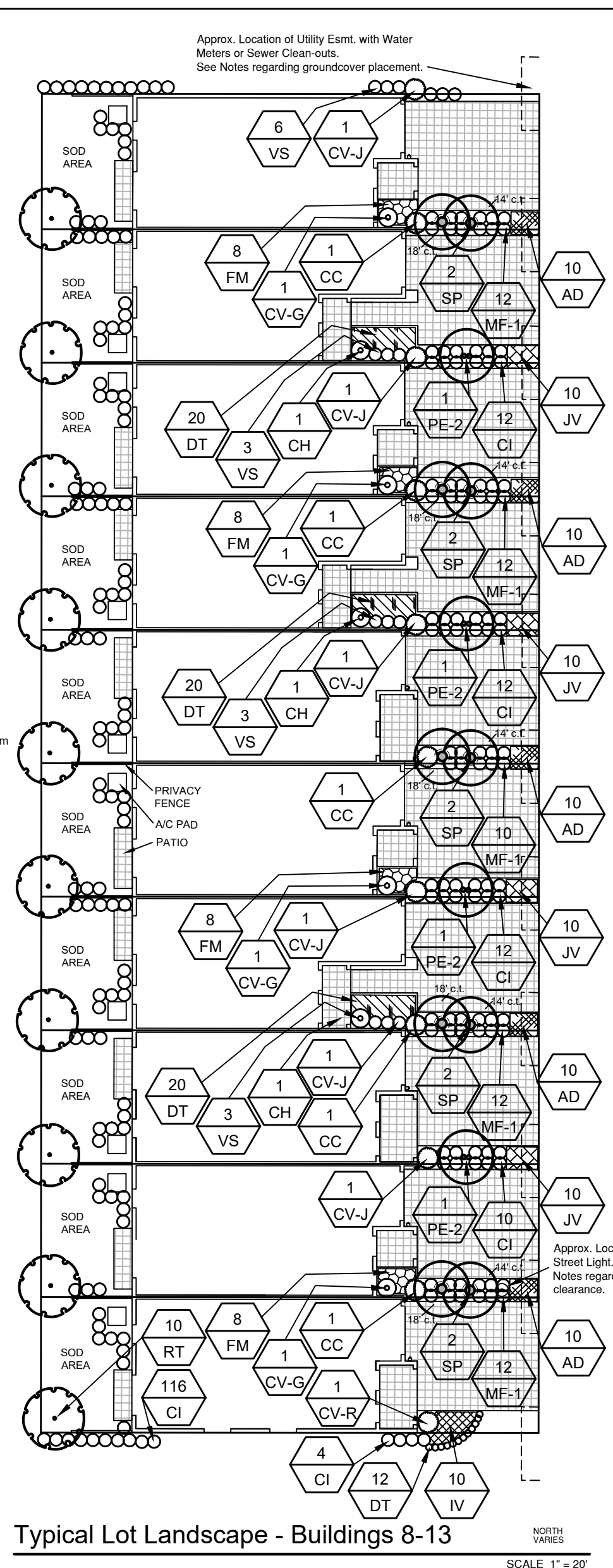
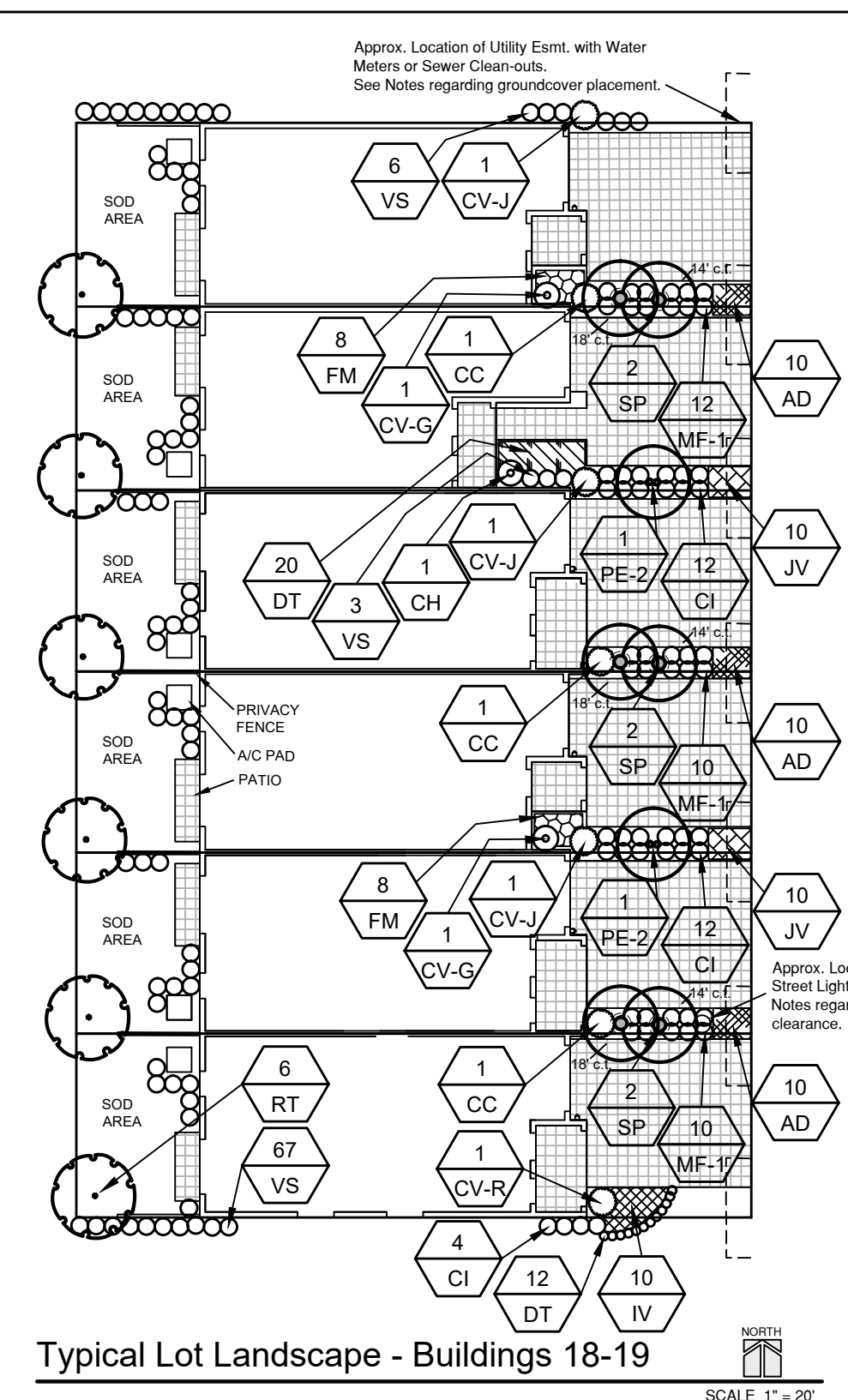






- Notes -

1. Location of rear lot trees is schematic. Coordinate location with other trees outside of the lot, i.e. with buffer trees.
2. Water meters and sewer clean-outs are located between driveways in the groundcover areas behind the interior lot line. Field adjustment of groundcovers will be necessary to accommodate these utilities.
3. Street lights are located approximately 6' behind the interior lot lines. Palms installed between driveways shall be adjusted, if necessary, so fronds clear the street light. See overall plan for schematic street light locations.



See LP-1 for Plant Key  
See LP-8 for Standard Planting Details & Notes

Revisions

2295 NW Corporate Blvd. Suite 213  
Boca Raton, Florida 33431  
561-910-0330

Covelli  
Design  
Associates Inc.

Urban Planning ♦

# Landscape Plan Celebration Pointe South Margate Florida

Date	04-10-2017
Scale	As Noted
PN#	1234

PREPARED BY

Steven E. Tate, RLA  
Landscape Architect #967  
State of Florida  
*For The Firm*

DATE \_\_\_\_\_

Drawing No.

LP-6

OF 8







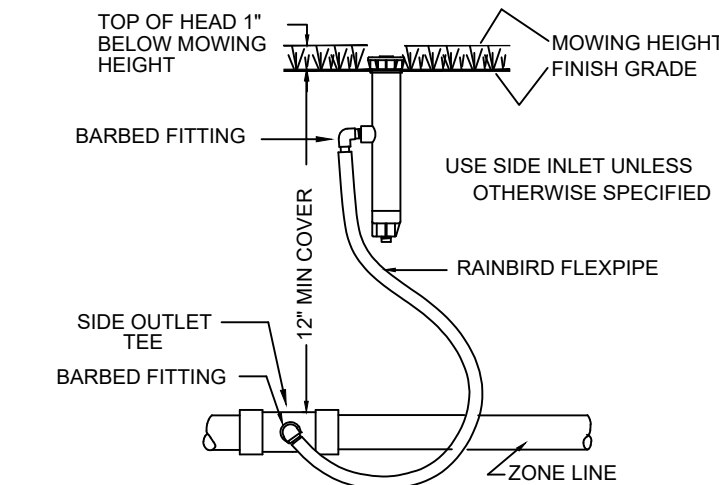
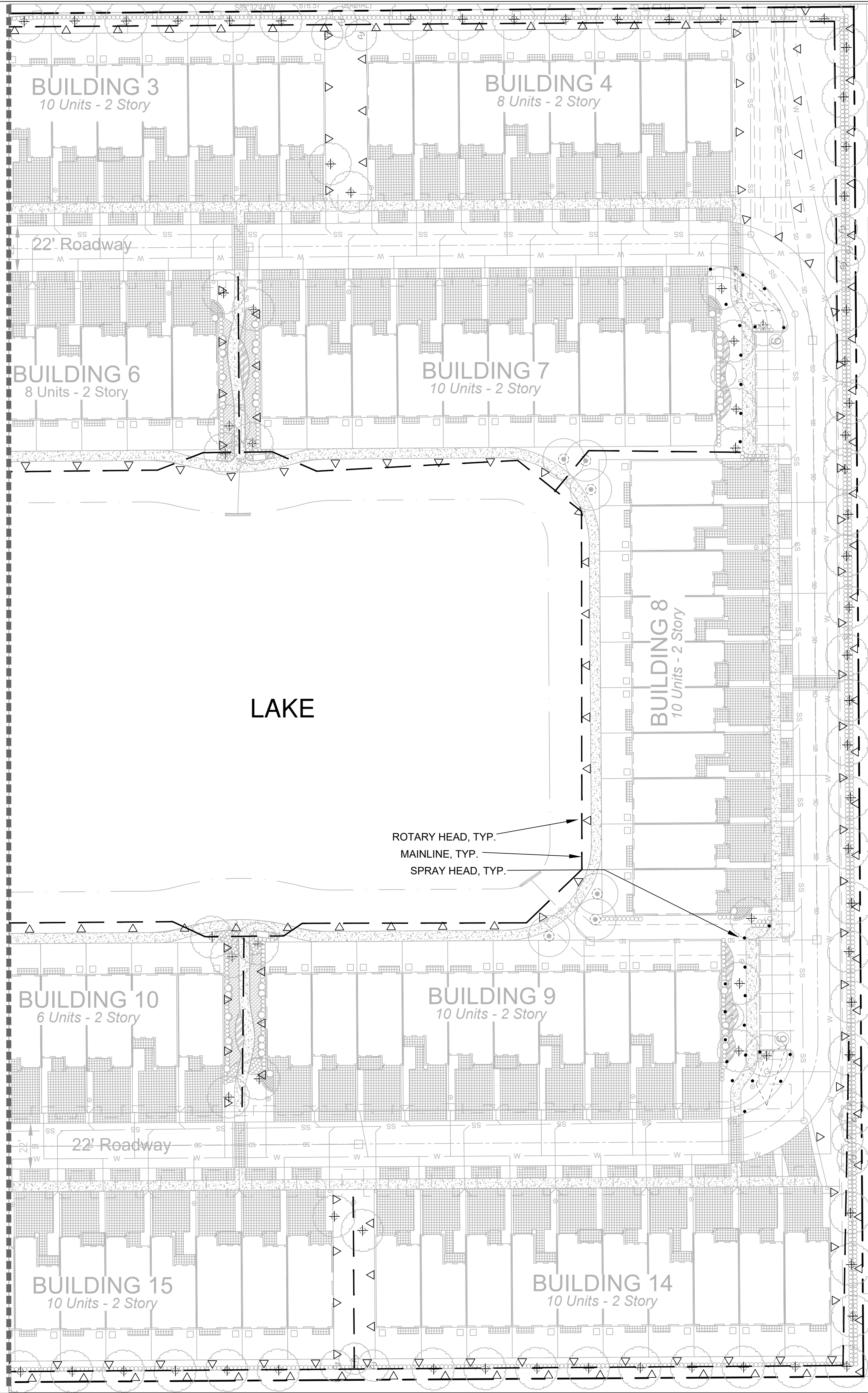
LP-8  
OF 8



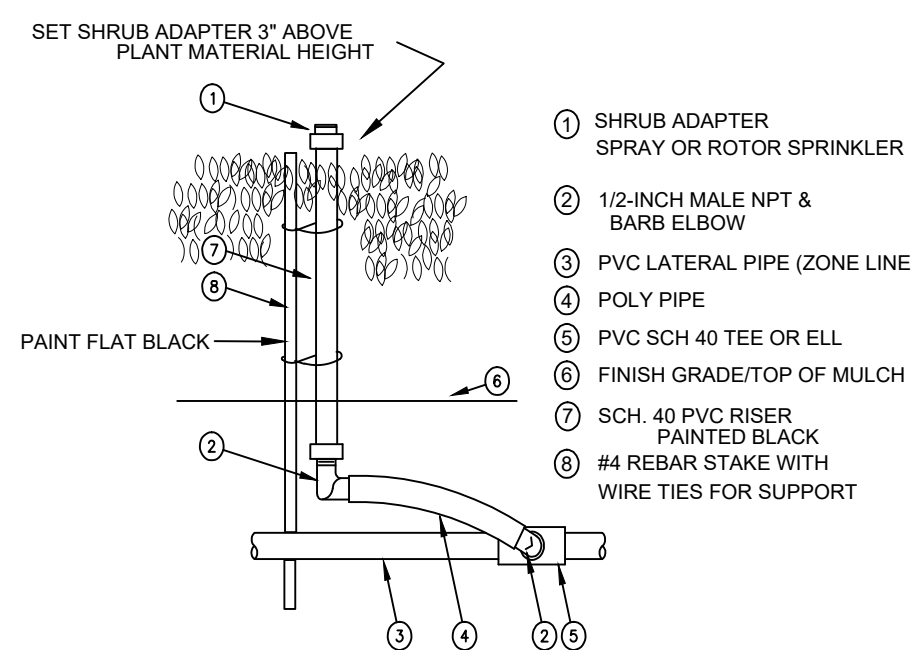




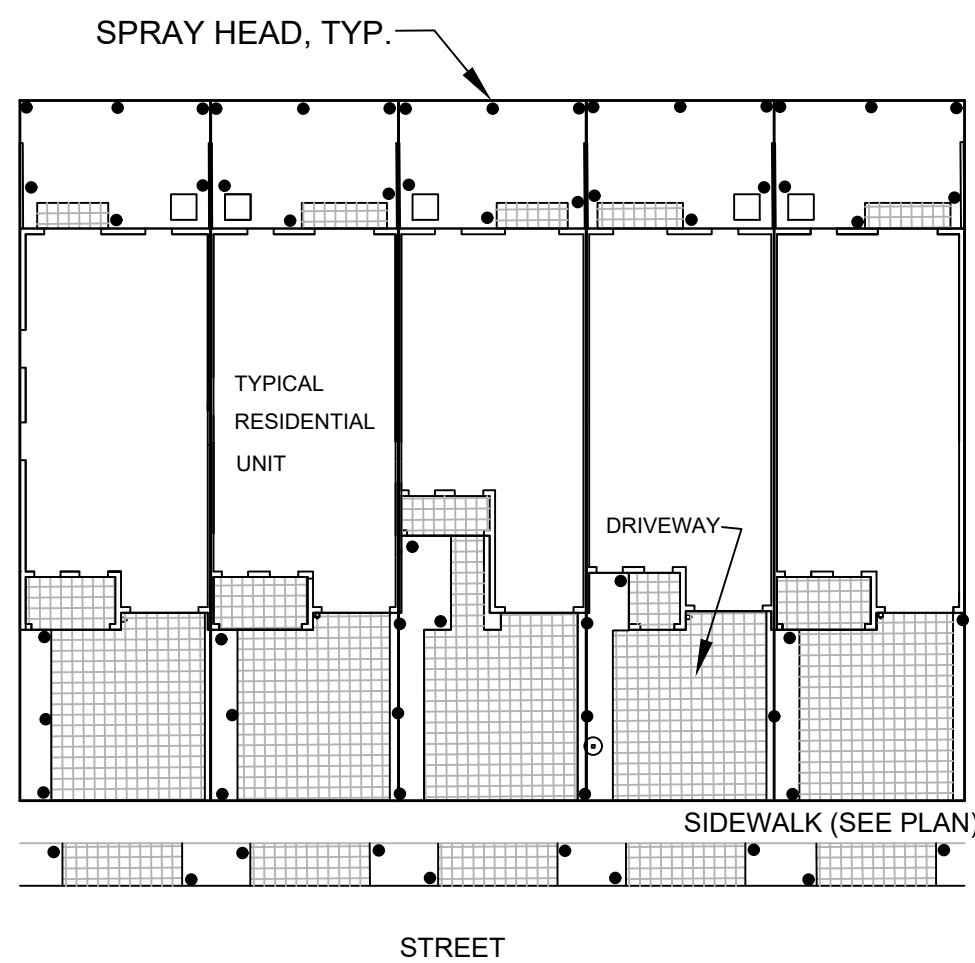
MATCHLINE SEE IR-1



SPRAY HEAD DETAIL  
ROTOR SIMILAR N.T.S.



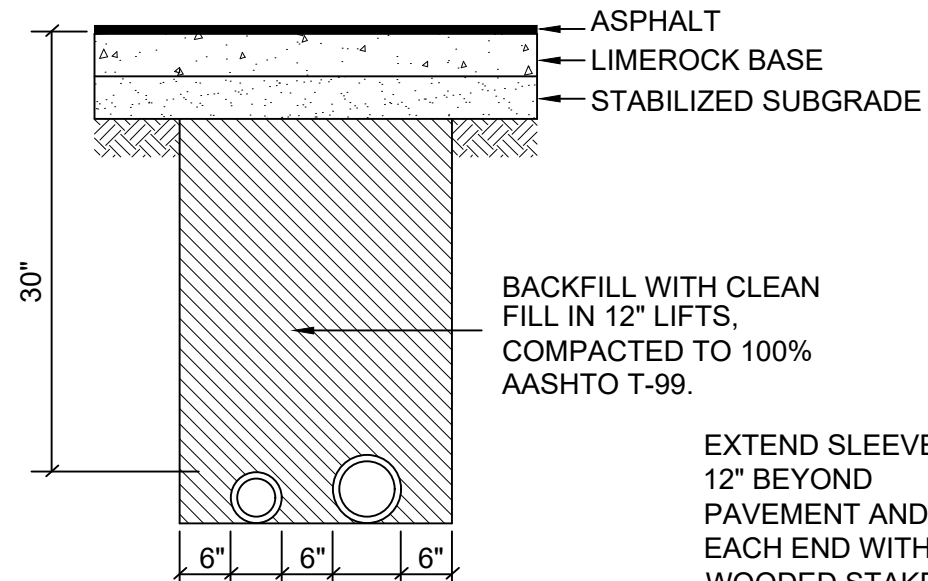
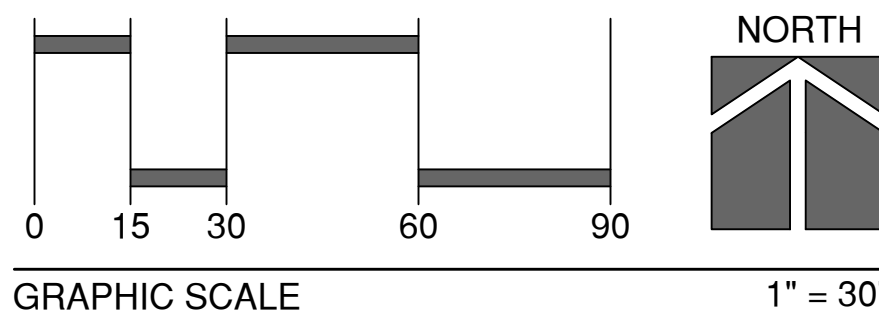
SHRUB RISER DETAIL  
ROTOR SIMILAR N.T.S.



- NOTES:
1. PLAN IS SCHEMATIC AND SOME ADJUSTMENT WILL BE NECESSARY DUE TO UNIT TYPES & PATIO OPTIONS. CONTRACTOR SHALL FIELD ADJUST HEAD LOCATIONS AND NOZZLES TO PROVIDE 100% COVERAGE WITH A MIN. 75% OVERLAP WHILE MINIMIZING OVERSPRAY ON PAVEMENT AND BUILDINGS.
  2. SPRAY HEADS SHALL BE ZONED SO THAT BANKS OF REAR YARDS OR BANKS FOR FRONT PLANTING AREAS ARE WATERED AT THE SAME TIME.

TYPICAL RESIDENTIAL BUILDING IRRIGATION

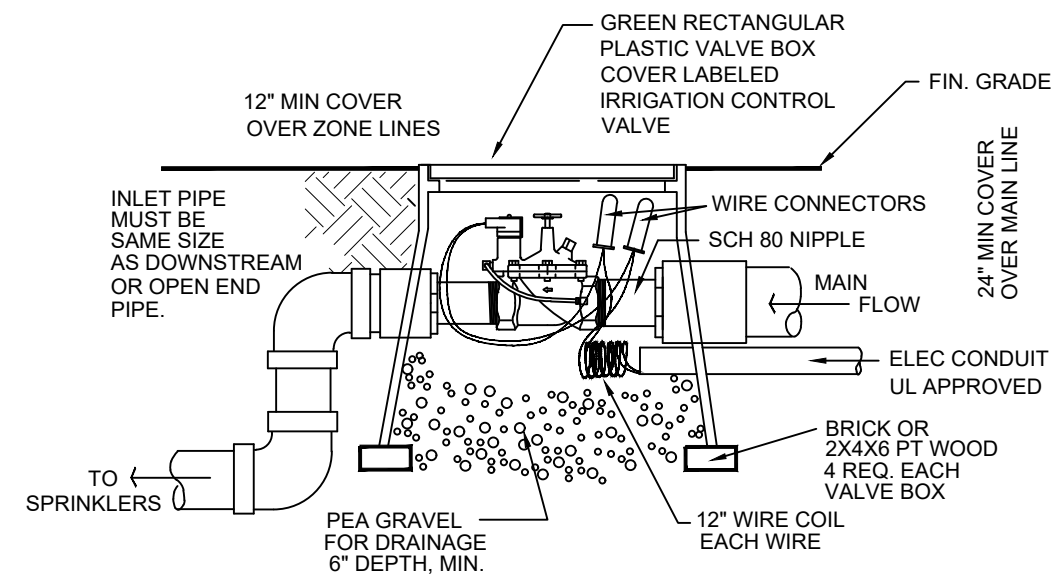
N.T.S.



SECTION  
IRRIGATION SLEEVING DETAIL

EXTEND SLEEVES MIN. 12" BEYOND PAVEMENT AND MARK EACH END WITH WOODED STAKE NOTING IRRIGATION SLEEVE AND THE DIAMETER..

N.T.S.



ELECTRIC REMOTE CONTROL VALVE  
WITH VALVE BOX

USE WATERTIGHT WIRE CONNECTORS ON ALL CONTROL WIRE

N.T.S.

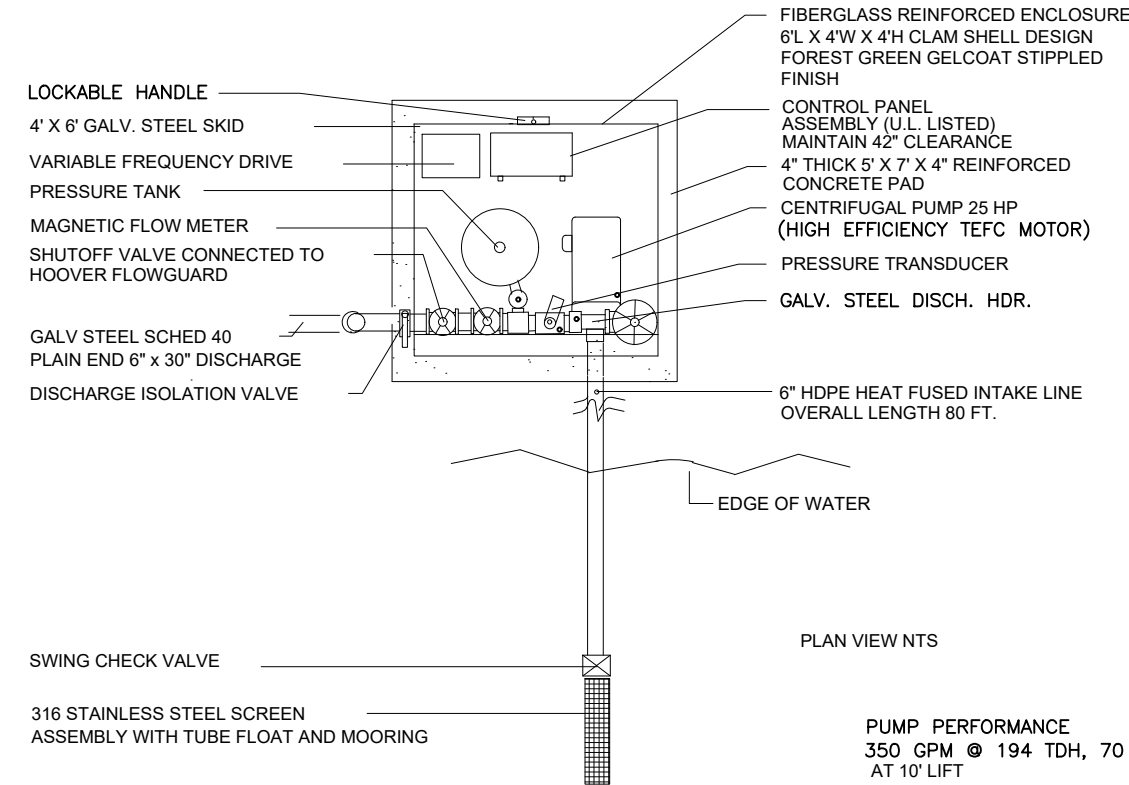
NOTE: SUCTION PIPES AND FITTINGS SHALL BE HDPE HEAT FUSED. CHECK VALVE 3" AND LARGER SHALL BE SWING TYPE, 2" AND SMALLER SHALL BE POPPET STYLE. ALL EXPOSED SUCTION & DISCHARGE PIPE ADJACENT TO THE PUMP SYSTEM SHALL BE GALVANIZED STEEL, BUTTERFLY OR BALLVALVE PROVIDED AT EACH PUMP.

PROVIDE MINIMUM OF 4' CLEARANCE ON ALL SIDES OF PUMP SYSTEM

WATER MANAGEMENT:  
COMMUNICATION VIA CELLULAR MODEM OR 10/100 BASE T DIRECT ETHERNET CONNECTION.  
USER DEFINED INTERNET BASED CONTROL PARAMETERS USING STANDARD WEB BROWSER WITH EVENT LOGGING AND EMAIL ALERTS FOR WARNINGS AND ALARMS AS FOLLOWS:  
X MAXIMUM GALLON PER MINUTE USAGE WITH ADJUSTABLE TIME DELAY AND NUMBER OF RESTART ATTEMPTS  
X MINIMUM TOTAL DAILY WATER USAGE  
X DAILY, MONTHLY AND ANNUAL WATER USAGE BUDGETS  
X GRAPHING OF REAL TIME AND HISTORICAL FLOW, INCOMING AND DISCHARGE PRESSURE AND SYSTEM EVENTS WITH TIME AND DATE SHOWN  
X RAIN SENSOR STATUS  
X HISTORIC WATER USAGE BY DAY AND MONTH  
X STARTER OVERLOAD FAULT SHUTDOWN

- \* OPTIONAL FEATURES ARE INCLUDED IF MARKED WITH AN "X"
- X VARIABLE FREQUENCY DRIVE
  - X IRRIGATION CONTROLLER WITH RAIN SENSOR ON 8' POLE
  - X PRESSURE TANK FOR PRESSURE DEMAND SYSTEMS

SAFETY FEATURES:  
PRESSURE DEMAND  
TRANSIENT SURGE  
LOSS OF PRIME  
HIGH FLOW  
PUMP OVERHEAT



PLAN VIEW NTS

SWING CHECK VALVE  
316 STAINLESS STEEL SCREEN  
ASSEMBLY WITH TUBE FLOAT AND MOORING

PUMP PERFORMANCE:  
350 GPM @ 134 TDH, 70 PSI  
AT 10' LIFT

ELECTRIC SERVICE TO BE, IN ORDER OF PREFERENCE:  
480V 3-PHASE, 230V CLOSED-DELTA 3-PHASE, 208 WYE 3-PHASE,  
230 OPEN-DELTA 3-PHASE.

HOOVER PUMPING MODEL: HCF-250FD-230/3-LM43Z  
Pumpers South Florida, Tel: 954-977-7299

CELEBRATION POINTE SOUTH - LENNAR  
CENTRIFUGAL PUMP SYSTEM DETAIL  
FIBERGLASS ENCLOSED SINGLE LAKE SUCTION  
PRESSURE DEMAND, VARIABLE FREQUENCY DRIVE  
HOOVER FLOWGUARD®

CENTRIFUGAL PUMP SYSTEM DETAIL

N.T.S.



Know what's below.  
Call before you dig.

2295 NW Corporate Blvd., Suite 213  
Boca Raton, Florida 33431  
561-910-0330

Covelli  
Design  
Associates Inc.  
Urban Planning • Landscape Architecture

Landscape Irrigation Plan  
Celebration Pointe South  
Margate  
Florida

Date 04-10-2017  
Scale As Noted  
PN# 1234

PREPARED BY

Steven E. Tate, R.L.A.  
Landscape Architect #987  
State of Florida  
For The Firm

DATE

Drawing No.  
IR-2  
OF 2

Revisions