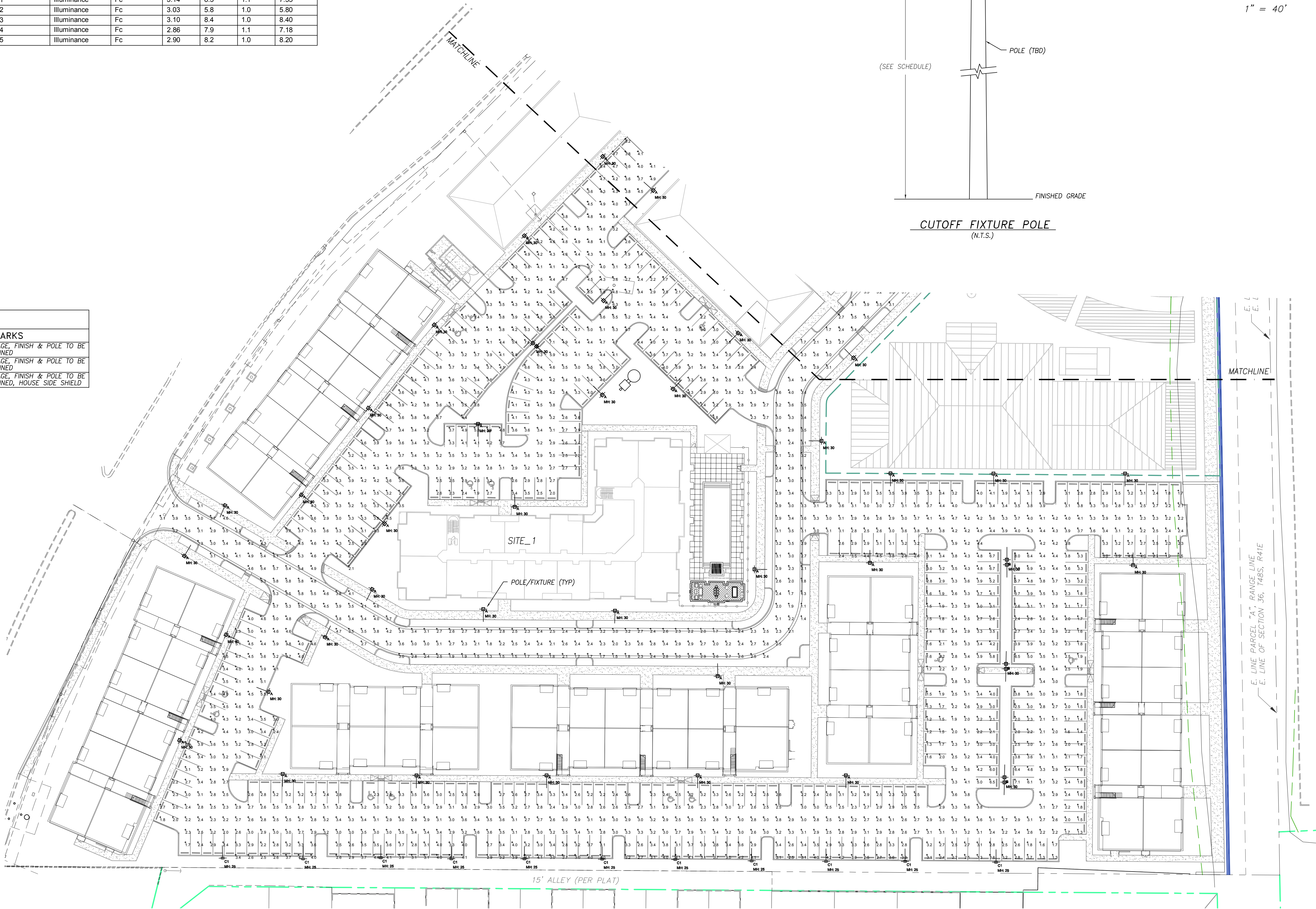
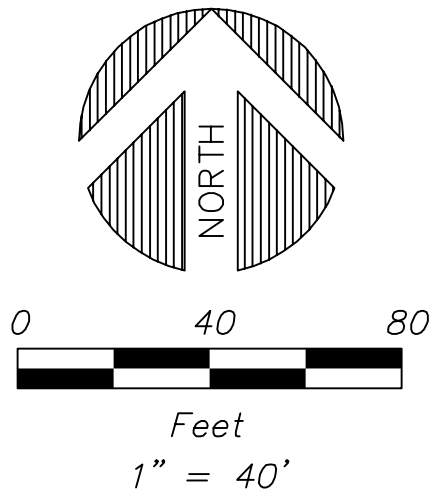
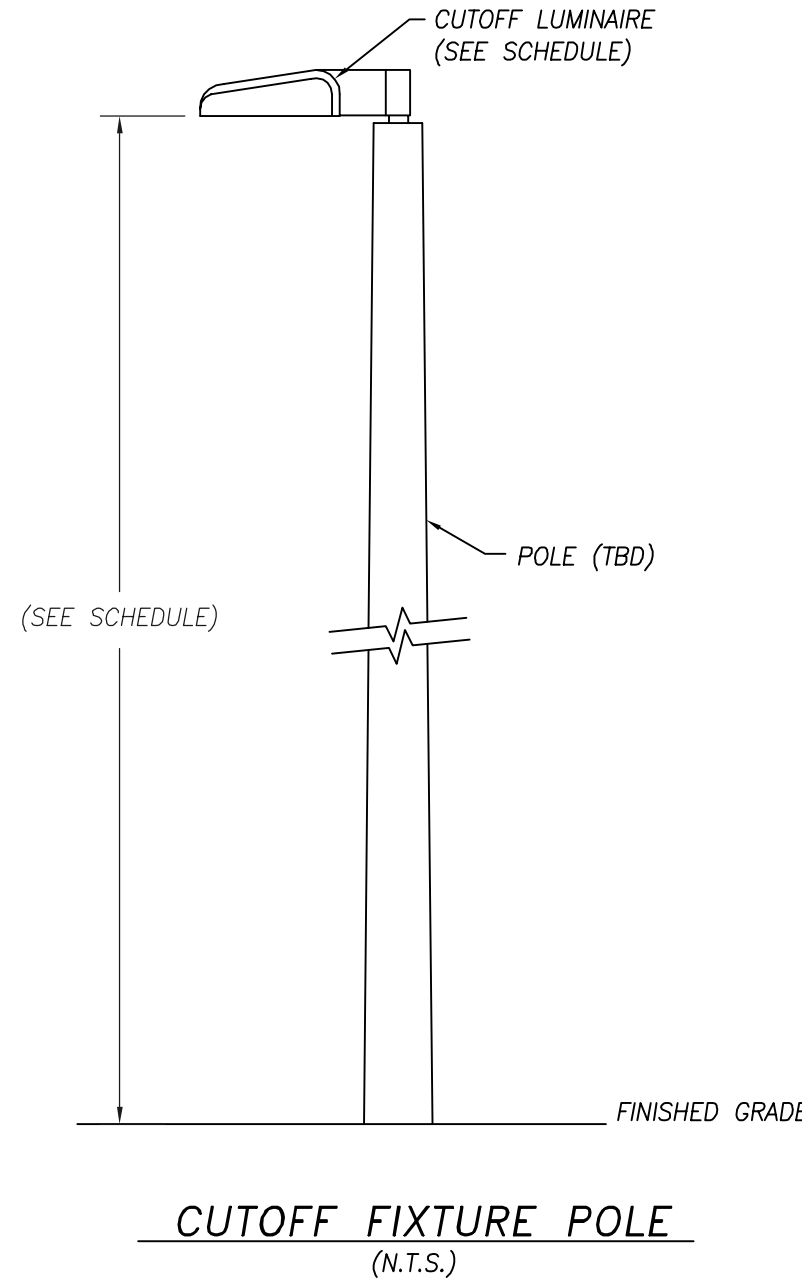
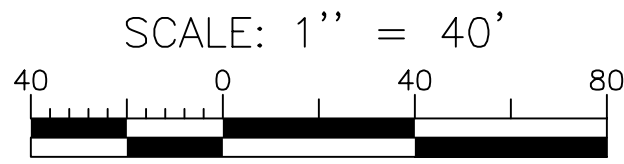


Luminaire Schedule						
Symbol	Qty	Label	Arrangement	Total Lamp Lumens	LLF	Description
	117	A	SINGLE	38000	0.684	AS2 400M SR3 (PULSE START)
	12	B	BACK-BACK	38000	0.684	(2) AS2 400M SR3 @180
	55	C1	SINGLE	25000	0.684	AS2 250M SR3 HS (PULSE START)

Calculation Summary						
Label	CalcType	Units	Avg	Max	Min	Max/Min
Site_1	Illuminance	Fc	3.14	8.3	1.1	7.55
Site_2	Illuminance	Fc	3.03	5.8	1.0	5.80
Site_3	Illuminance	Fc	3.10	8.4	1.0	8.40
Site_4	Illuminance	Fc	2.86	7.9	1.1	7.18
Site_5	Illuminance	Fc	2.90	8.2	1.0	8.20

LIGHTING FIXTURE SCHEDULE					
TYPE	MANUFACTURER / CATALOG NO.	MOUNTING	LAMP	VOLT	REMARKS
A	LITHONIA: AERIS CUTOFF AS2.400M.SR3.*SCWA.*	30° AFG (POLE TOP)	400W PSMH	TBD	* VOLTAGE, FINISH & POLE TO BE DETERMINED
B	LITHONIA: AERIS CUTOFF (2) AS2.400M.SR3.*SCWA.* @180	30° AFG (POLE TOP)	(2) 400W PSMH		* VOLTAGE, FINISH & POLE TO BE DETERMINED
C	LITHONIA: AERIS CUTOFF AS2.250M.SR3.*SCWA.*HS	25° AFG (POLE TOP)	250W PSMH		* VOLTAGE, FINISH & POLE TO BE DETERMINED, HOUSE SIDE SHIELD

- PHOTOMETRIC NOTES:**
- CALCULATION POINTS ARE IN THE CENTER OF A 10' x 10' GRID IN A HORIZONTAL PLANE AT GRADE WITH METERS FACING UP.
 - ALL CALCULATIONS ARE MAINTAINED ILLUMINATION VALUES AND INCLUDE LIGHT LOSS DEPRECIATION FACTORS FOR DIRT, LAMP LUMENS AND TILT (IF APPLICABLE).
 - CALCULATIONS DO NOT CONSIDER THE EFFECT OF TREES AND OTHER LANDSCAPING, ETC.
 - THIS PHOTOMETRIC PLAN IS FOR SITE APPROVAL AND IS NOT INTENDED AS AN ELECTRICAL CONSTRUCTION DRAWING.
 - THE SYMBOL FOR POLE & FIXTURE IS SHOWN LARGER THAN ACTUAL FOR CLARITY.
 - LIGHTING STANDARDS TO WITHSTAND WIND LOADING PER FLORIDA BUILDING CODE.
 - ILLUMINATION LEVELS ARE PER CITY OF MARGATE CODE (LEVEL 1), 1.0 FC MINIMUM AND MAX/MIN UNIFORMITY OF 10:1.
 - CALCULATIONS ARE THE PRODUCT OF THE FIXTURES AND LOCATIONS INDICATED; CHANGES AND SUBSTITUTIONS MAY AFFECT LIGHTING LEVELS AND WILL REQUIRE RE-SUBMISSION AND APPROVAL OF PHOTOMETRIC CALCULATIONS.



Photometric data provided by the lighting manufacturer. Ballbé & Associates makes no warranty, either expressed or implied, as to the accuracy of the photometric data, nor shall Ballbé & Associates be liable for the use of such data.

Designed by: V.J.F. Date: 3/2017
Drawn by: V.J.F. Date: 3/2017
Checked by: C.J.B. Date: _____

BALLBÉ & ASSOCIATES
Civil Engineering • Planning • Surveying

2737 Northeast 30th Place
Fort Lauderdale, Florida 33306
Phone: (954) 491-7811
Authorization No. EB-26343

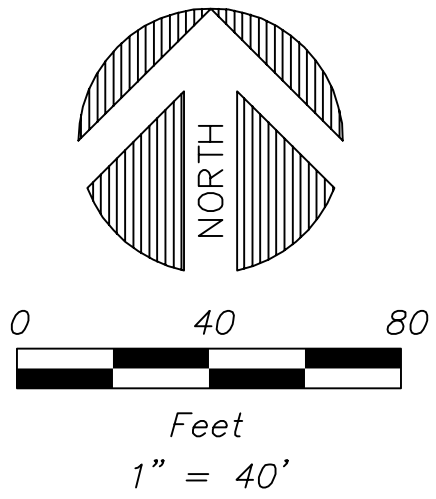
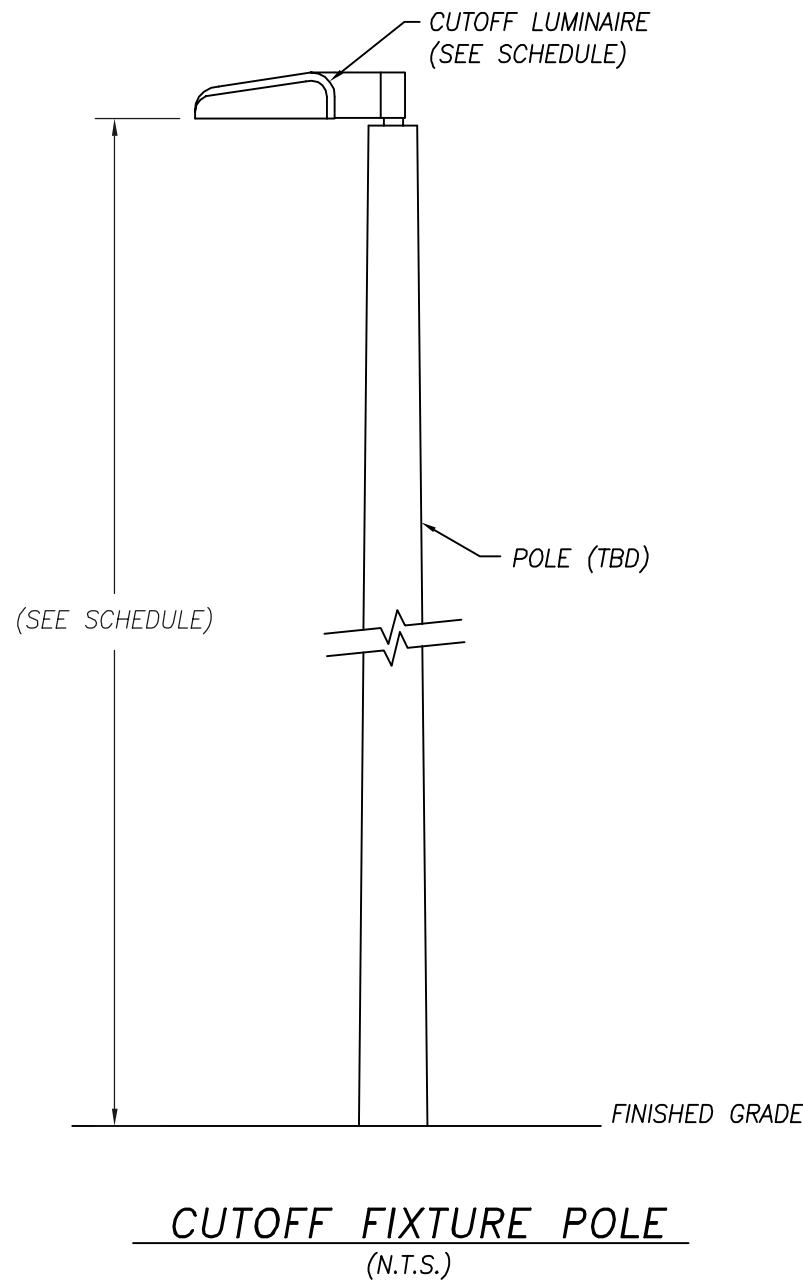
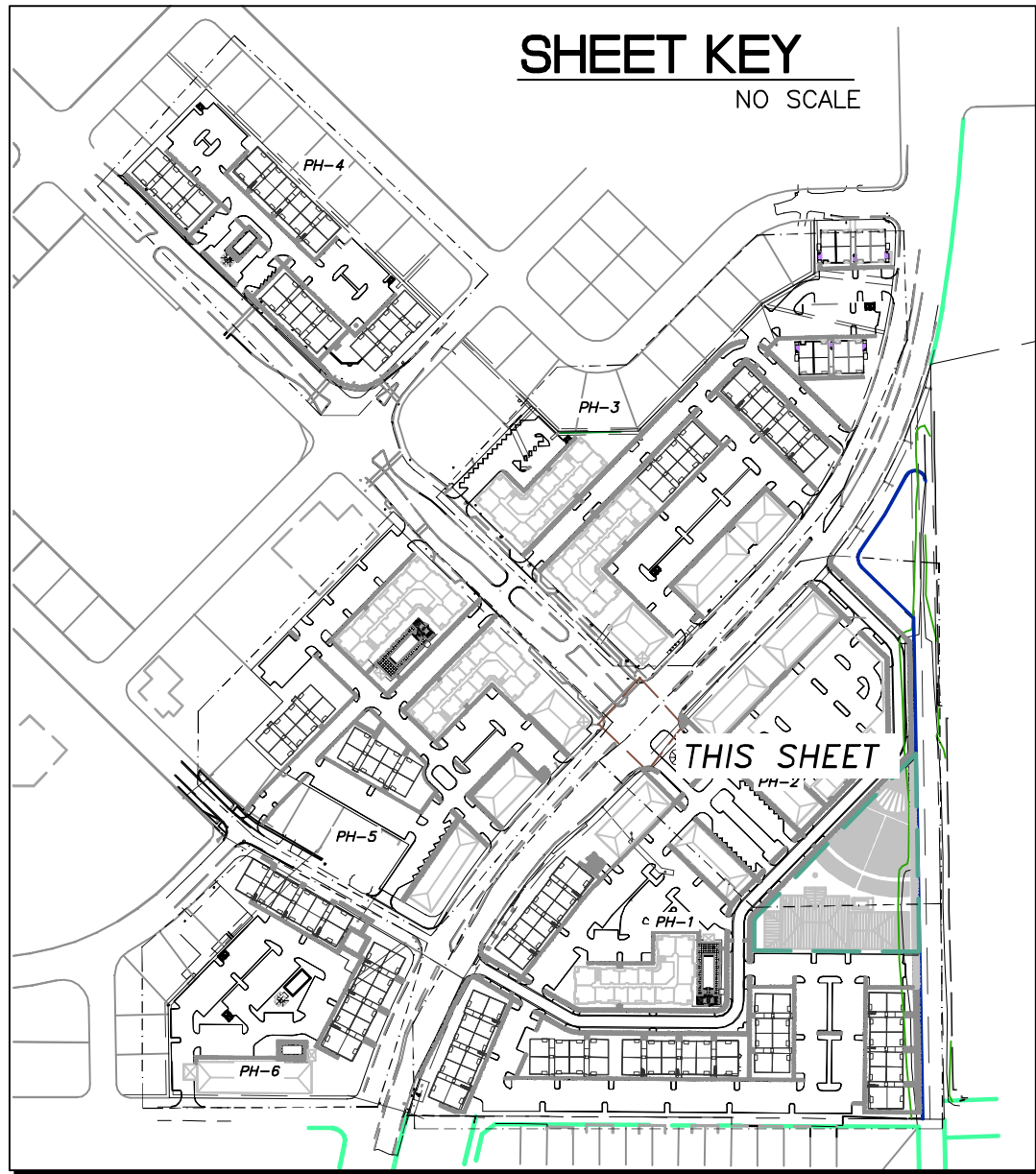
Electrical Engineer: Vernon Jay Franke
Registered Engineer Number: 49466
Date: 3/15/17
State of Florida

PARKING LOT LIGHTING PHOTOMETRIC PLAN

MARGATE CITY CENTER
NEW URBAN COMMUNITIES

Project Number:
201707

Sheet Number:
PH-1



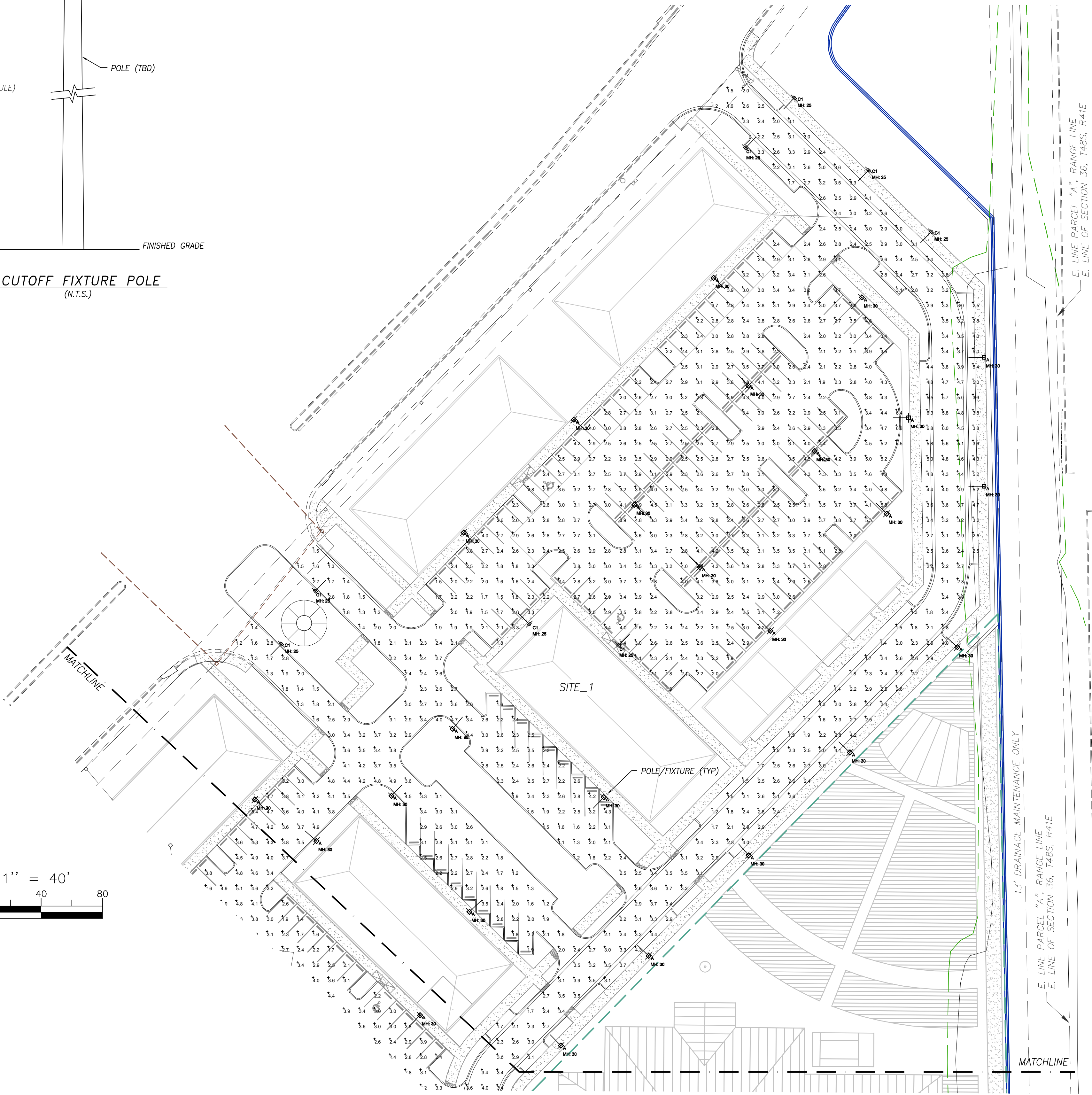
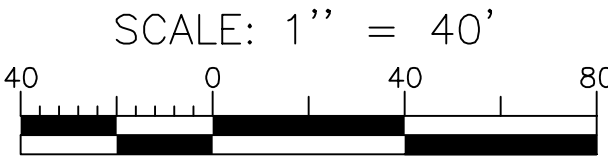
Luminaire Schedule						
Symbol	Qty	Label	Arrangement	Total Lamp Lumens	LLF	Description
	117	A	SINGLE	38000	0.684	AS2 400M SR3 (PULSE START)
	12	B	BACK-BACK	38000	0.684	(2) AS2 400M SR3 @180
	55	C1	SINGLE	25000	0.684	AS2 250M SR3 HS (PULSE START)

Calculation Summary						
Label	CalcType	Units	Avg	Max	Min	Max/Min
Site_1	Illuminance	Fc	3.14	8.3	1.1	7.55
Site_2	Illuminance	Fc	3.03	5.8	1.0	5.80
Site_3	Illuminance	Fc	3.10	8.4	1.0	8.40
Site_4	Illuminance	Fc	2.86	7.9	1.1	7.18
Site_5	Illuminance	Fc	2.90	8.2	1.0	8.20

LIGHTING FIXTURE SCHEDULE					
TYPE	MANUFACTURER / CATALOG NO.	MOUNTING	LAMP	VOLT	REMARKS
A	LITHONIA: AERIS CUTOFF AS2.400M.SR3.*SCWA.*	30' AFG (POLE TOP)	400W PSMH	TBD	* VOLTAGE, FINISH & POLE TO BE DETERMINED
B	LITHONIA: AERIS CUTOFF (2) AS2.400M.SR3.*SCWA.* @180	30' AFG (POLE TOP)	(2) 400W PSMH		* VOLTAGE, FINISH & POLE TO BE DETERMINED
C	LITHONIA: AERIS CUTOFF AS2.250MH.SR3.*SCWA.*HS	25' AFG (POLE TOP)	250W PSMH		* VOLTAGE, FINISH & POLE TO BE DETERMINED, HOUSE SIDE SHIELD

PHOTOMETRIC NOTES:

- CALCULATION POINTS ARE IN THE CENTER OF A 10' x 10' GRID IN A HORIZONTAL PLANE AT GRADE WITH METERS FACING UP.
- ALL CALCULATIONS ARE MAINTAINED ILLUMINATION VALUES AND INCLUDE LIGHT LOSS DEPRECIATION FACTORS FOR DIRT, LAMP LUMENS AND TILT (IF APPLICABLE).
- CALCULATIONS DO NOT CONSIDER THE EFFECT OF TREES AND OTHER LANDSCAPING, ETC.
- THIS PHOTOMETRIC PLAN IS FOR SITE APPROVAL AND IS NOT INTENDED AS AN ELECTRICAL CONSTRUCTION DRAWING.
- THE SYMBOL FOR POLE & FIXTURE IS SHOWN LARGER THAN ACTUAL FOR CLARITY.
- ILLUMINATION STANDARDS TO WITHSTAND WIND LOADING PER FLORIDA BUILDING CODE.
- ILLUMINATION LEVELS ARE PER CITY OF MARGATE CODE (LEVEL 1), 1.0 FC MINIMUM AND MAX/MIN UNIFORMITY OF 10:1.
- CALCULATIONS ARE THE PRODUCT OF THE FIXTURES AND LOCATIONS INDICATED; CHANGES AND SUBSTITUTIONS MAY AFFECT LIGHTING LEVELS AND WILL REQUIRE RE-SUBMISSION AND APPROVAL OF PHOTOMETRIC CALCULATIONS.



Photometric data provided by the lighting manufacturer. Ballb  & Associates makes no warranty, either expressed or implied, as to the accuracy of the photometric data, nor shall Ballb  & Associates be liable for the use of such data.

Designed by: V.J.F. Date: 3/2017
Drawn by: V.J.F. Date: 3/2017
Checked by: C.J.B. Date: _____

BALLB 
& ASSOCIATES
Civil Engineering • Planning • Surveying

2737 Northeast 30th Place
Fort Lauderdale, Florida 33306
Phone: (954) 491-7811
Authorization No. EB-26343

Electrical Engineer: Vernon Jay Franke
Registered Engineer Number: _____
State of Florida
Date: 3/15/17
49466

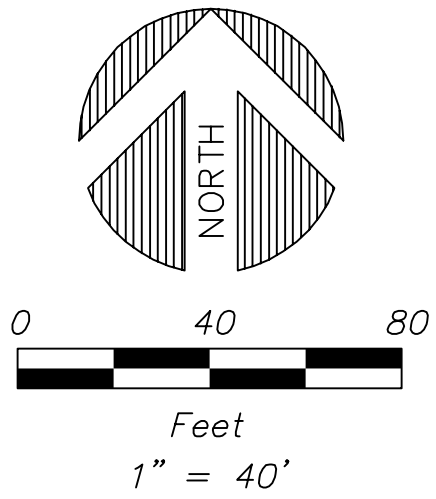
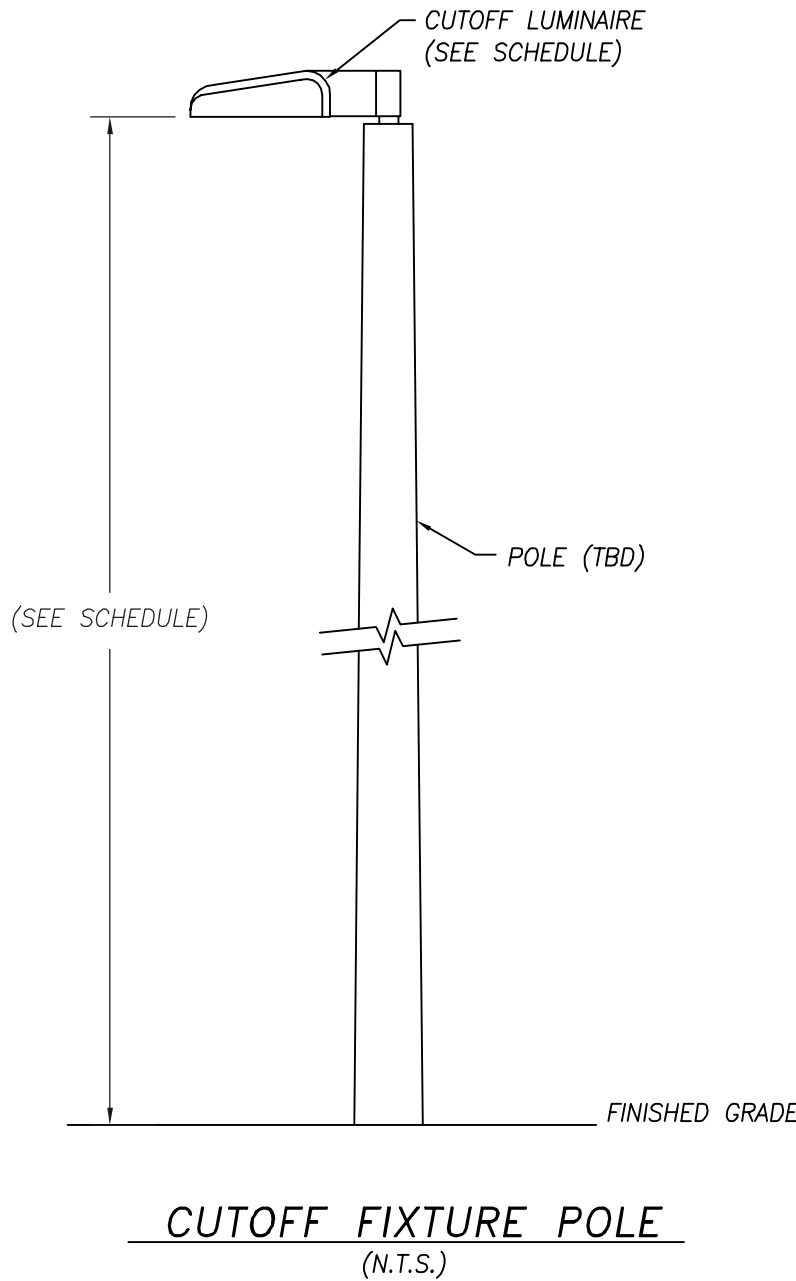
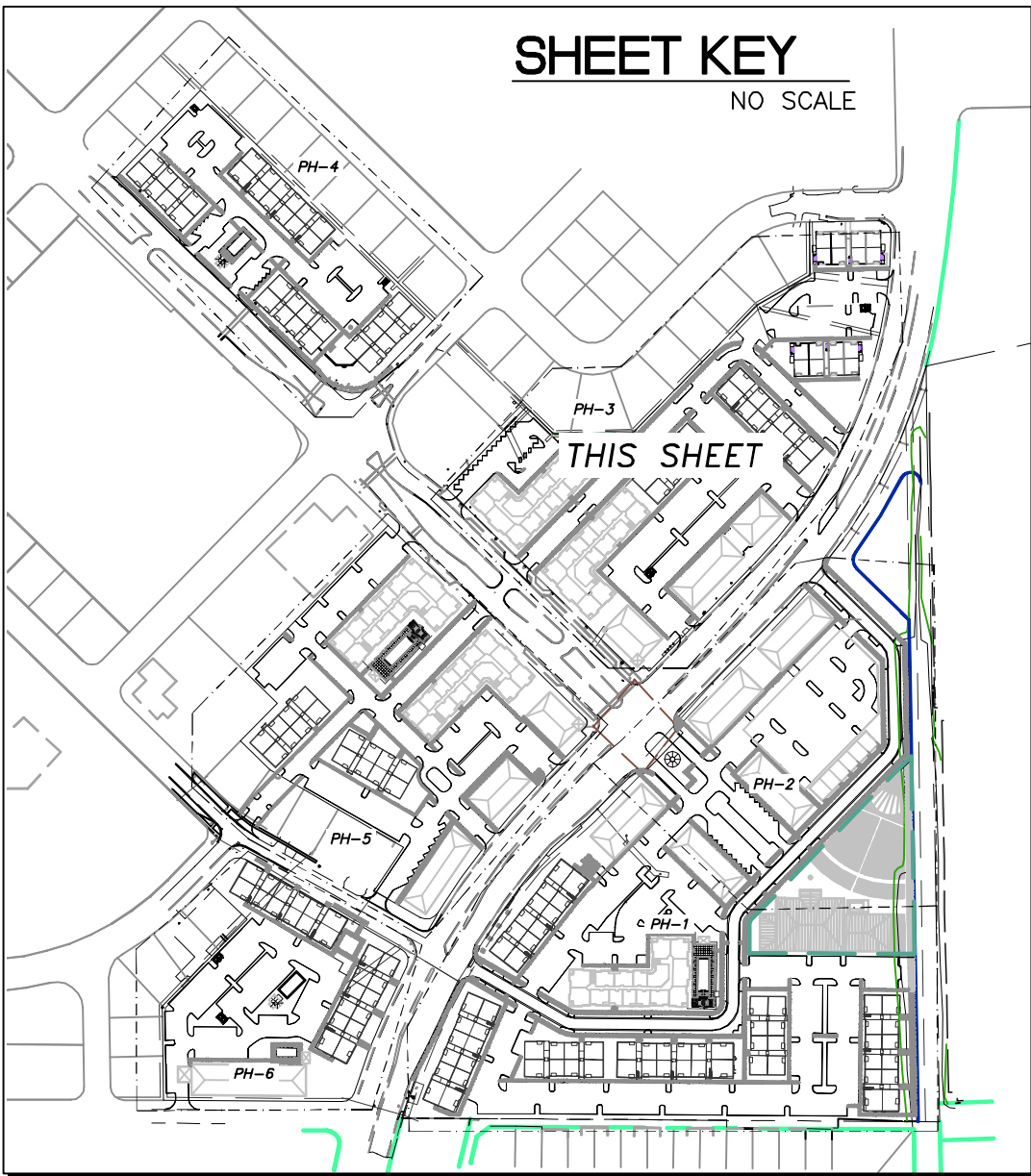
PARKING LOT LIGHTING PHOTOMETRIC PLAN

MARGATE CITY CENTER
NEW URBAN COMMUNITIES

Project Number:
201707

Sheet Number:
PH-2

NO.	DATE	BY	REVISION	NO.	DATE	BY	REVISION
1	05/02/17	VJF	SITE REVISION, CALC GRID & POLES REVISED				



Luminaire Schedule						
Symbol	Qty	Label	Arrangement	Total Lamp Lumens	LLF	Description
	117	A	SINGLE	38000	0.684	AS2 400M SR3 (PULSE START)
	12	B	BACK-BACK	38000	0.684	(2) AS2 400M SR3 @180
	55	C1	SINGLE	25000	0.684	AS2 250M SR3 HS (PULSE START)

Calculation Summary						
Label	CalcType	Units	Avg	Max	Min	Max/Min
Site_1	Illuminance	Fc	3.14	8.3	1.1	7.55
Site_2	Illuminance	Fc	3.03	5.8	1.0	5.80
Site_3	Illuminance	Fc	3.10	8.4	1.0	8.40
Site_4	Illuminance	Fc	2.86	7.9	1.1	7.18
Site_5	Illuminance	Fc	2.90	8.2	1.0	8.20

LIGHTING FIXTURE SCHEDULE					
TYPE	MANUFACTURER / CATALOG NO.	MOUNTING	LAMP	VOLT	REMARKS
A	LITHONIA: AERIS CUTOFF AS2.400M.SR3.*SCWA.*	30° AFG (POLE TOP)	400W PSMH	TBD	* VOLTAGE, FINISH & POLE TO BE DETERMINED
B	LITHONIA: AERIS CUTOFF (2) AS2.400M.SR3.*SCWA.* @180	30° AFG (POLE TOP)	(2) 400W PSMH		* VOLTAGE, FINISH & POLE TO BE DETERMINED
C	LITHONIA: AERIS CUTOFF AS2.250M.SR3.*SCWA.*HS	25° AFG (POLE TOP)	250W PSMH		* VOLTAGE, FINISH & POLE TO BE DETERMINED, HOUSE SIDE SHIELD

PHOTOMETRIC NOTES:

- CALCULATION POINTS ARE IN THE CENTER OF A 10' x 10' GRID IN A HORIZONTAL PLANE AT GRADE WITH METERS FACING UP.
- ALL CALCULATIONS ARE MAINTAINED ILLUMINATION VALUES AND INCLUDE LIGHT LOSS DEPRECIATION FACTORS FOR DIRT, LAMP LUMENS AND TILT (IF APPLICABLE).
- CALCULATIONS DO NOT CONSIDER THE EFFECT OF TREES AND OTHER LANDSCAPING, ETC.
- THIS PHOTOMETRIC PLAN IS FOR SITE APPROVAL AND IS NOT INTENDED AS AN ELECTRICAL CONSTRUCTION DRAWING.
- THE SYMBOL FOR POLE & FIXTURE IS SHOWN LARGER THAN ACTUAL FOR CLARITY.
- LIGHTING STANDARDS TO WITHSTAND WIND LOADING PER FLORIDA BUILDING CODE.
- ILLUMINATION LEVELS ARE PER CITY OF MARGATE CODE (LEVEL 1), 1.0 FC MINIMUM AND MAX/MIN UNIFORMITY OF 10:1.
- CALCULATIONS ARE THE PRODUCT OF THE FIXTURES AND LOCATIONS INDICATED; CHANGES AND SUBSTITUTIONS MAY AFFECT LIGHTING LEVELS AND WILL REQUIRE RE-SUBMISSION AND APPROVAL OF PHOTOMETRIC CALCULATIONS.

Photometric data provided by the lighting manufacturer. Ballbé & Associates makes no warranty, either expressed or implied, as to the accuracy of the photometric data, nor shall Ballbé & Associates be liable for the use of such data.

NO.	DATE	BY	REVISION	NO.	DATE	BY	REVISION
1	05/02/17	VJF	SITE REVISION, CALC GRID & POLES REVISED				

Designed by: V.J.F. Date: 3/2017
Drawn by: V.J.F. Date: 3/2017
Checked by: C.J.B. Date: _____

BALLBÉ & ASSOCIATES
Civil Engineering • Planning • Surveying

2737 Northeast 30th Place
Fort Lauderdale, Florida 33306
Phone: (954) 491-7811
Authorization No. EB-26343

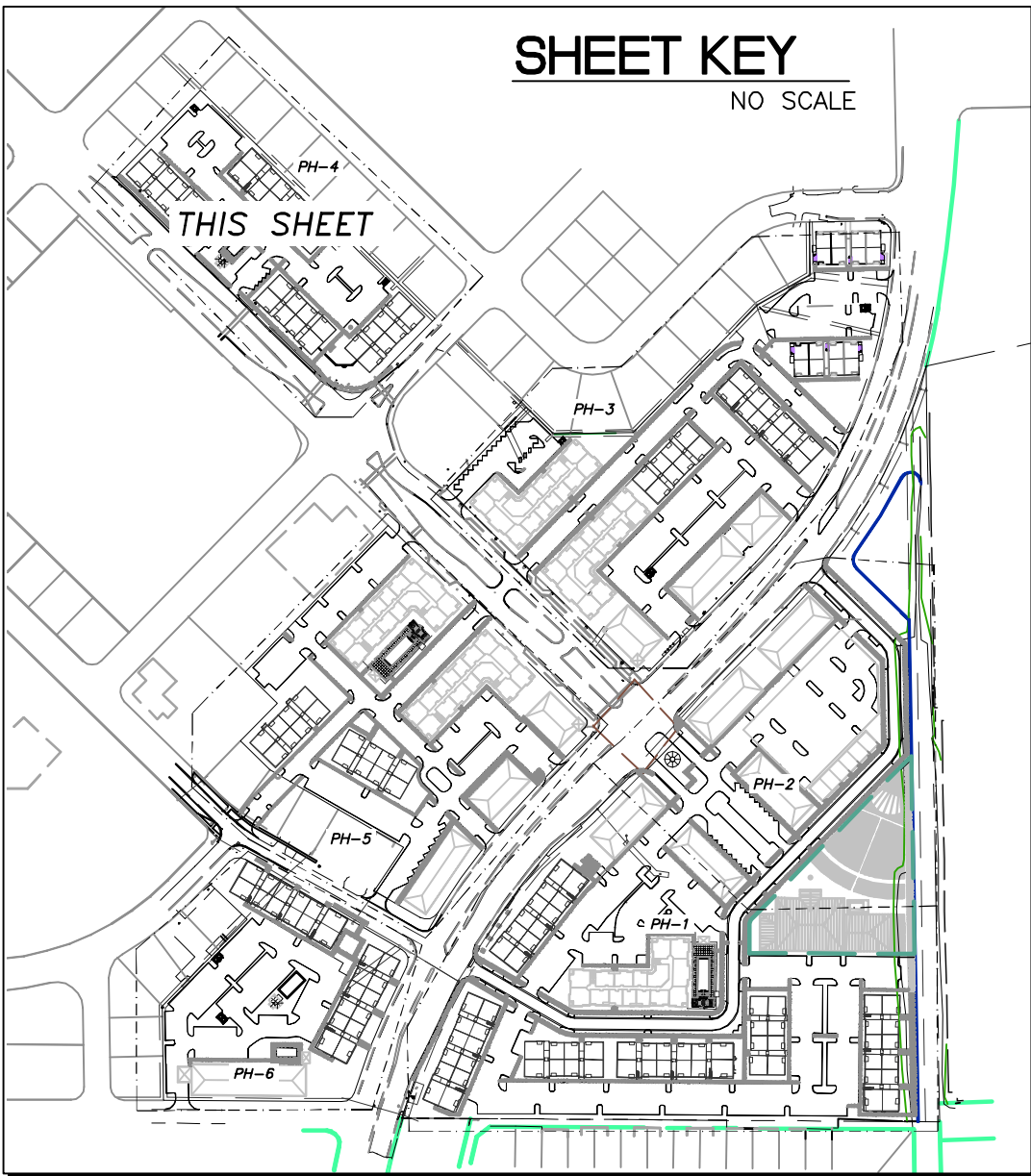
Electrical Engineer: Vernon Jay Franke
Registered Engineer Number: _____ Date: 3/15/17
State of Florida 49466

PARKING LOT LIGHTING PHOTOMETRIC PLAN

MARGATE CITY CENTER
NEW URBAN COMMUNITIES

Project Number:
201707

Sheet Number:
PH-3



Luminaire Schedule						
Symbol	Qty	Label	Arrangement	Total Lamp Lumens	LLF	Description
	117	A	SINGLE	38000	0.684	AS2 400M SR3 (PULSE START)
	12	B	BACK-BACK	38000	0.684	(2) AS2 400M SR3 @180
	55	C1	SINGLE	25000	0.684	AS2 250M SR3 HS (PULSE START)

Calculation Summary						
Label	CalcType	Units	Avg	Max	Min	Max/Min
Site_1	illuminance	Fc	3.14	8.3	1.1	7.55
Site_2	illuminance	Fc	3.03	5.8	1.0	5.80
Site_3	illuminance	Fc	3.10	8.4	1.0	8.40
Site_4	illuminance	Fc	2.86	7.9	1.1	7.18
Site_5	illuminance	Fc	2.90	8.2	1.0	8.20

LIGHTING FIXTURE SCHEDULE					
TYPE	MANUFACTURER / CATALOG NO.	MOUNTING	LAMP	VOLT	REMARKS
A	LITHONIA: AERIS CUTOFF AS2.400M.SR3*.SCWA.*	30' AFG (POLE TOP)	400W PSMH	TBD	* VOLTAGE, FINISH & POLE TO BE DETERMINED
B	LITHONIA: AERIS CUTOFF (2) AS2.400M.SR3*.SCWA.* @180	30' AFG (POLE TOP)	(2) 400W PSMH		* VOLTAGE, FINISH & POLE TO BE DETERMINED
C	LITHONIA: AERIS CUTOFF AS2.250M.SR3*.SCWA.*.HS	25' AFG (POLE TOP)	250W PSMH		* VOLTAGE, FINISH & POLE TO BE DETERMINED, HOUSE SIDE SHIELD

PHOTOMETRIC NOTES:

1. CALCULATION POINTS ARE IN THE CENTER OF A 10' x 10' GRID IN A HORIZONTAL PLANE AT GRADE WITH METERS FACING UP.
2. ALL CALCULATIONS ARE MAINTAINED ILLUMINATION VALUES AND INCLUDE LIGHT LOSS DEPRECIATION FACTORS FOR DIRT, LAMP LUMENS AND TILT (IF APPLICABLE).
3. CALCULATIONS DO NOT CONSIDER THE EFFECT OF TREES AND OTHER LANDSCAPING, ETC.
4. THIS PHOTOMETRIC PLAN IS FOR SITE APPROVAL AND IS NOT INTENDED AS AN ELECTRICAL CONSTRUCTION DRAWING.
5. THE SYMBOL FOR POLE & FIXTURE IS SHOWN LARGER THAN ACTUAL FOR CLARITY.
6. LIGHTING STANDARDS TO WITHSTAND WIND LOADING PER FLORIDA BUILDING CODE.
7. ILLUMINATION LEVELS ARE PER CITY OF MARGATE CODE (LEVEL 1), 1.0 FC MINIMUM AND MAX:MIN UNIFORMITY OF 10:1.
8. CALCULATIONS ARE THE PRODUCT OF THE FIXTURES AND LOCATIONS INDICATED; CHANGES AND SUBSTITUTIONS MAY AFFECT LIGHTING LEVELS AND WILL REQUIRE RE-SUBMISSION AND APPROVAL OF PHOTOMETRIC CALCULATIONS.

Photometric data provided by the lighting manufacturer. Ballbé & Associates makes no warranty, either expressed or implied, as to the accuracy of the photometric data, nor shall Ballbé & Associates be liable for the use of such data.

NO.	DATE	BY	REVISION	NO.	DATE	BY	REVISION
1	05/02/17	VJF	SITE REVISION, CALC GRID & POLES REVISED				

Designed by: V.J.F. Date: 3/2017
Drawn by: V.J.F. Date: 3/2017
Checked by: C.J.B. Date: _____

BALLBÉ & ASSOCIATES
Civil Engineering • Planning • Surveying

2737 Northeast 30th Place
Fort Lauderdale, Florida 33306
Phone: (954) 491-7811
Authorization No. EB-26343

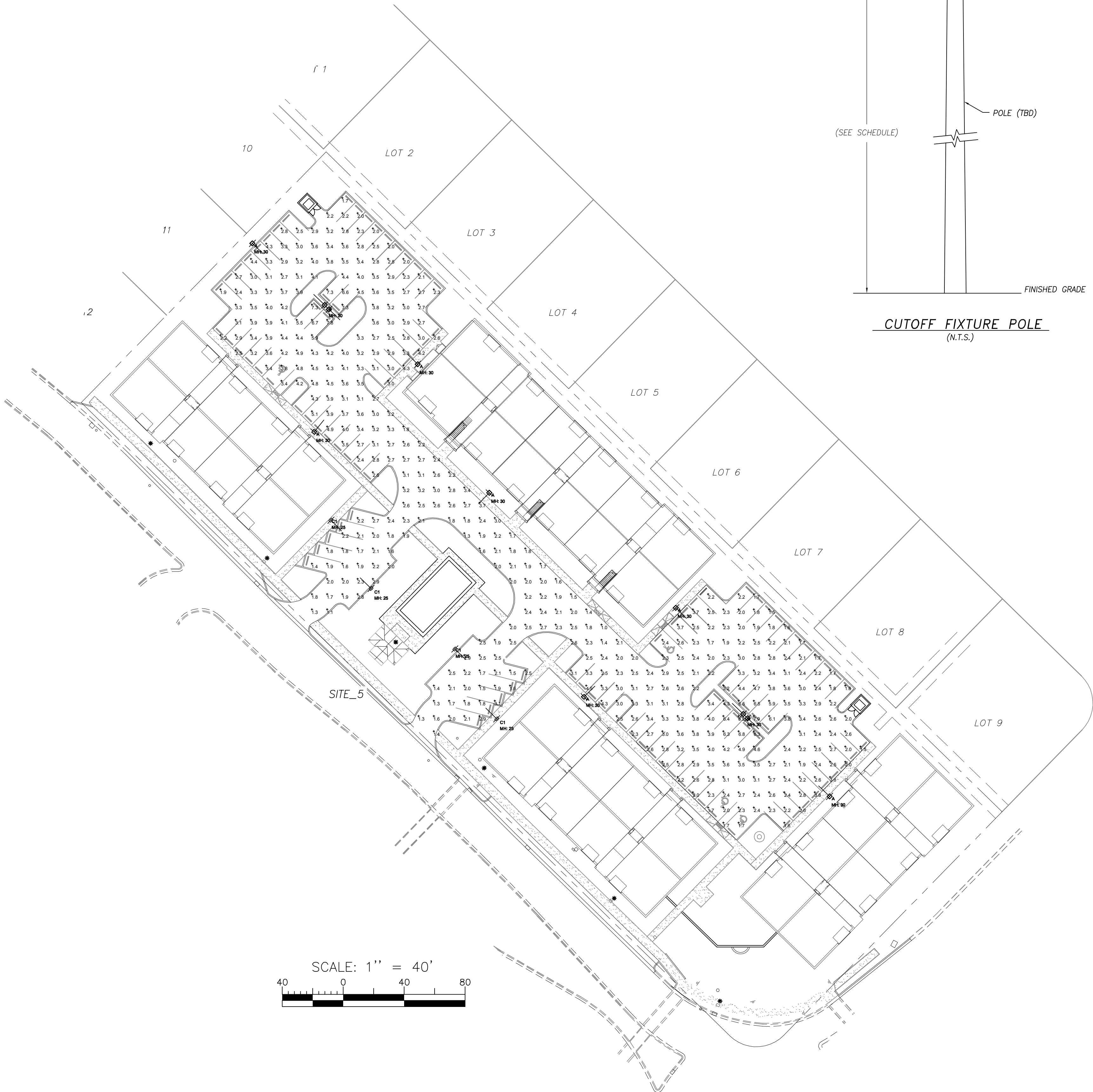
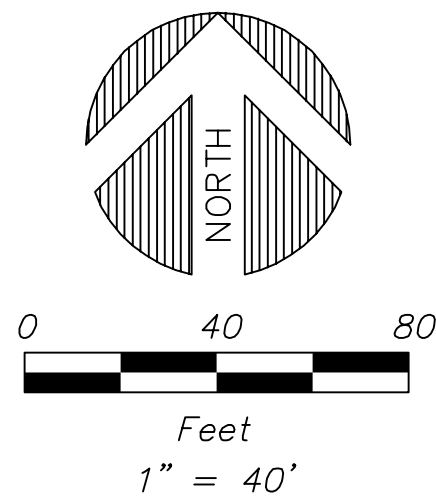
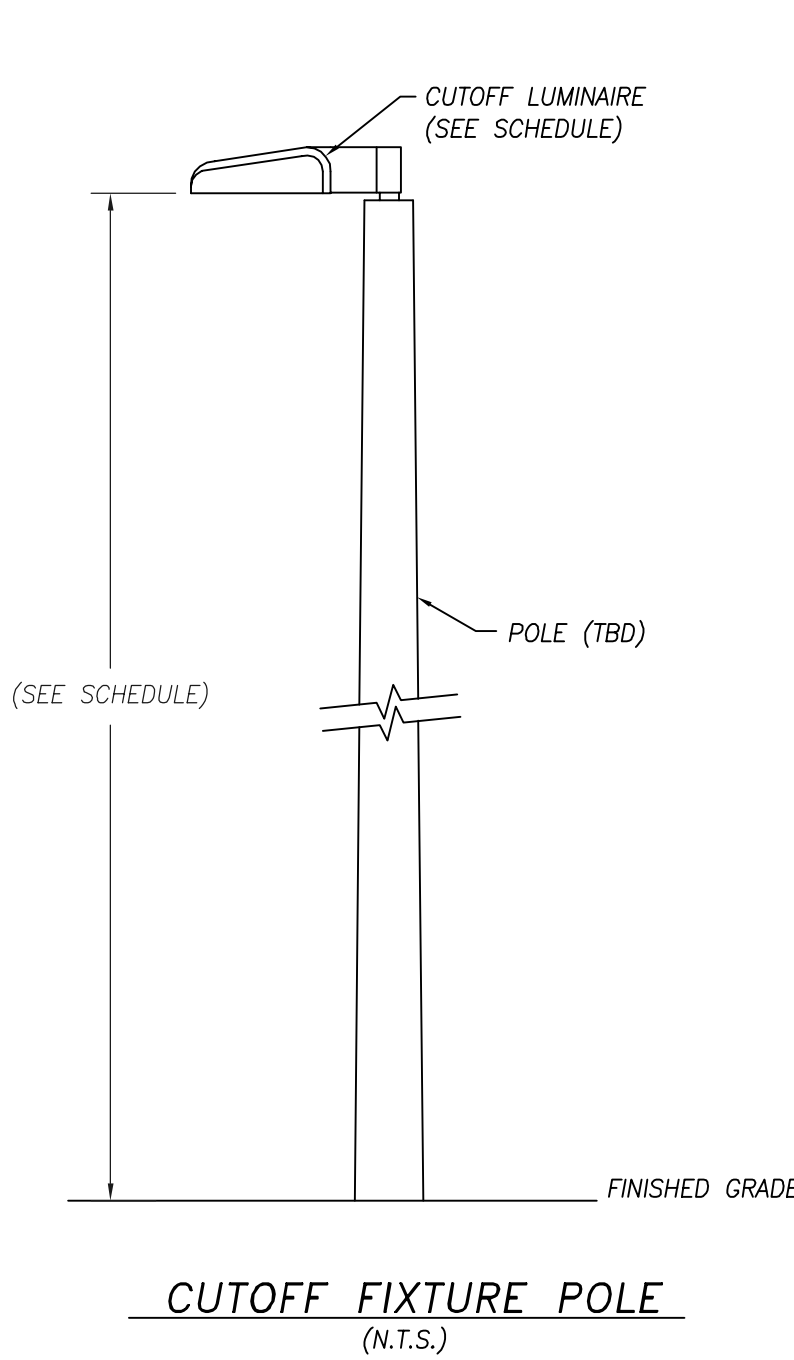
Electrical Engineer: Vernon Jay Franke
Registered Engineer Number: _____ Date: 3/15/17
State of Florida 49466

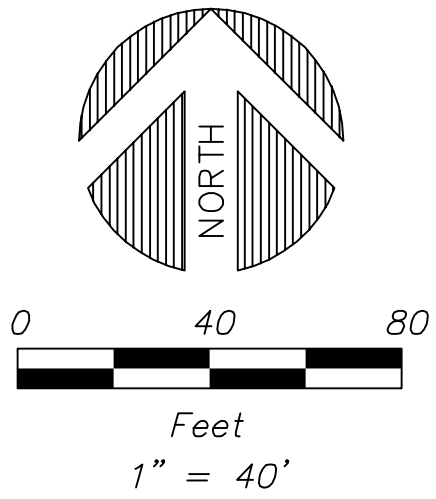
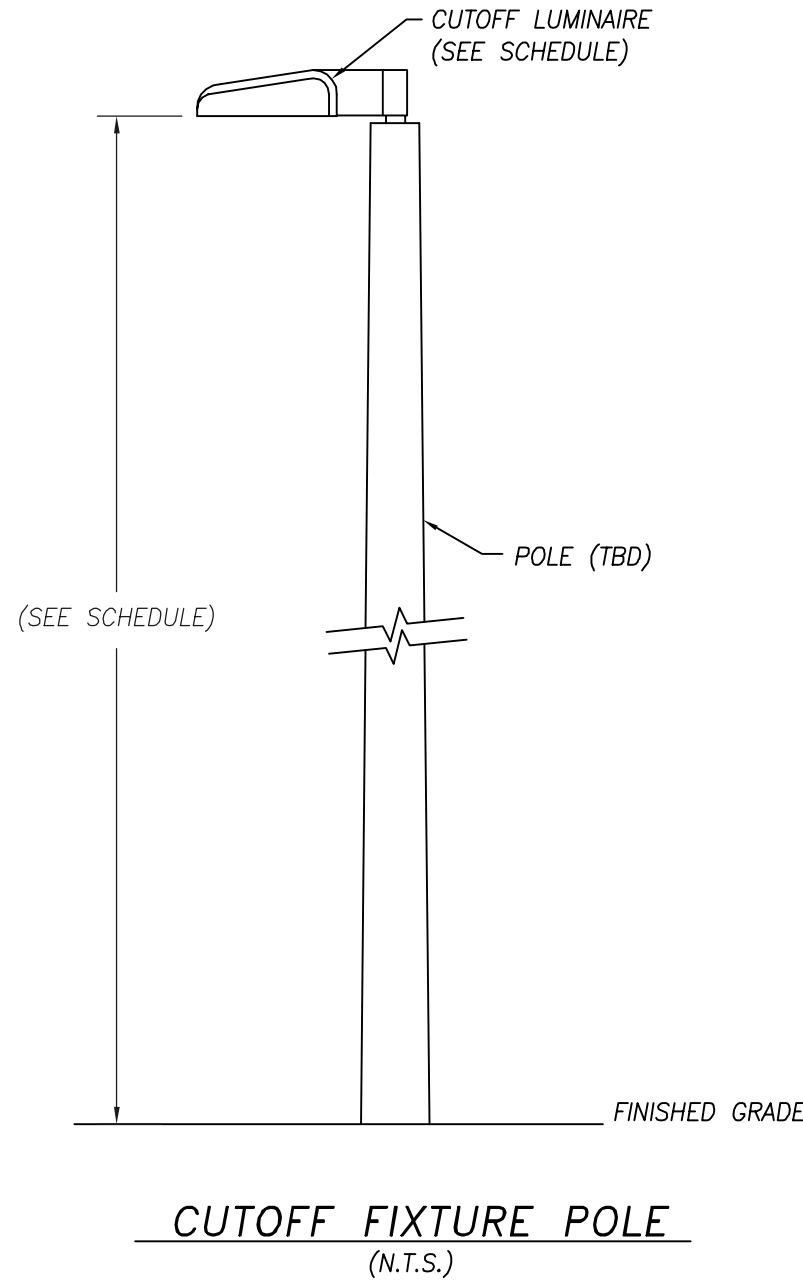
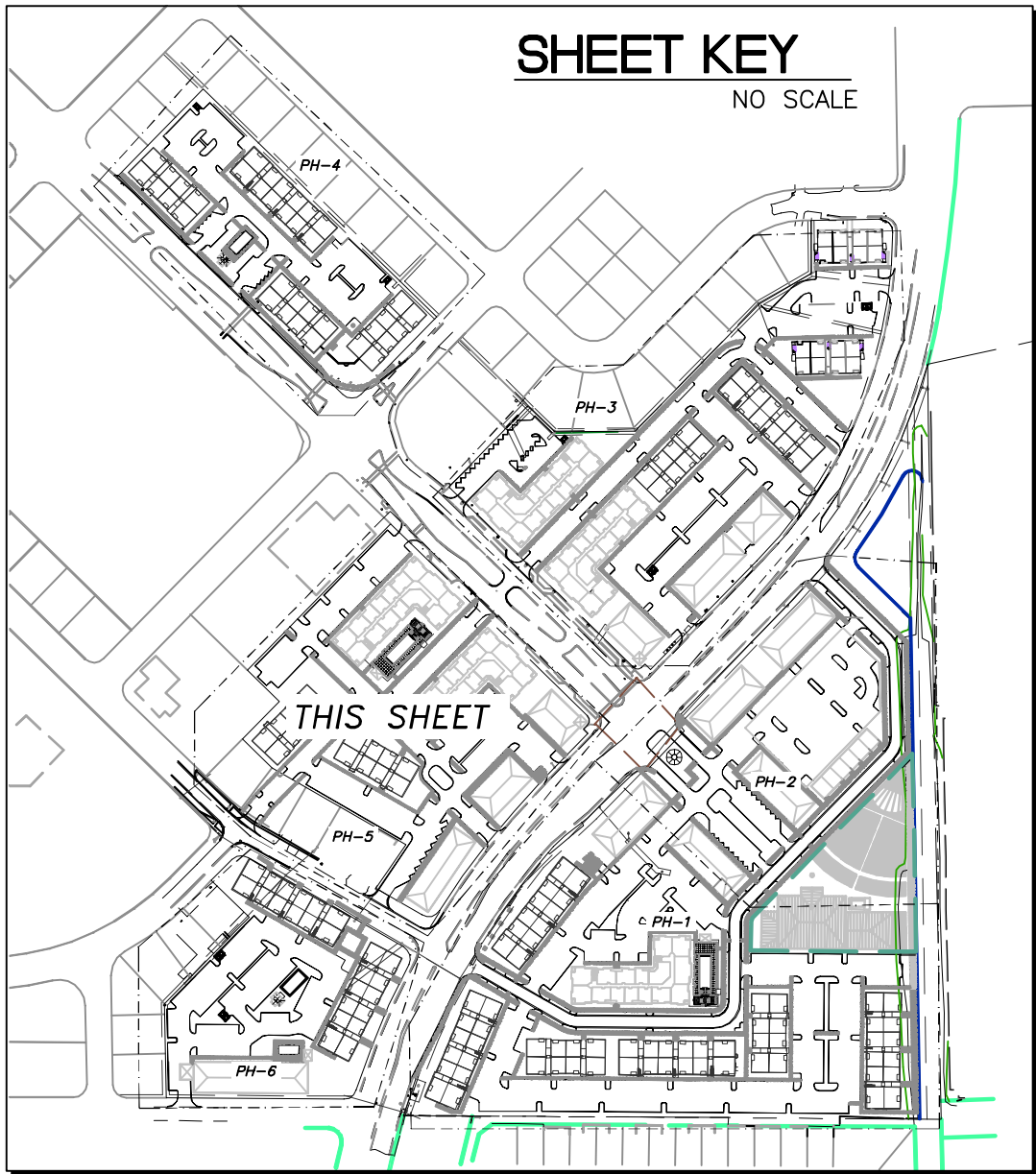
PARKING LOT LIGHTING PHOTOMETRIC PLAN

MARGATE CITY CENTER
NEW URBAN COMMUNITIES

Project Number:
201707

Sheet Number:
PH-4





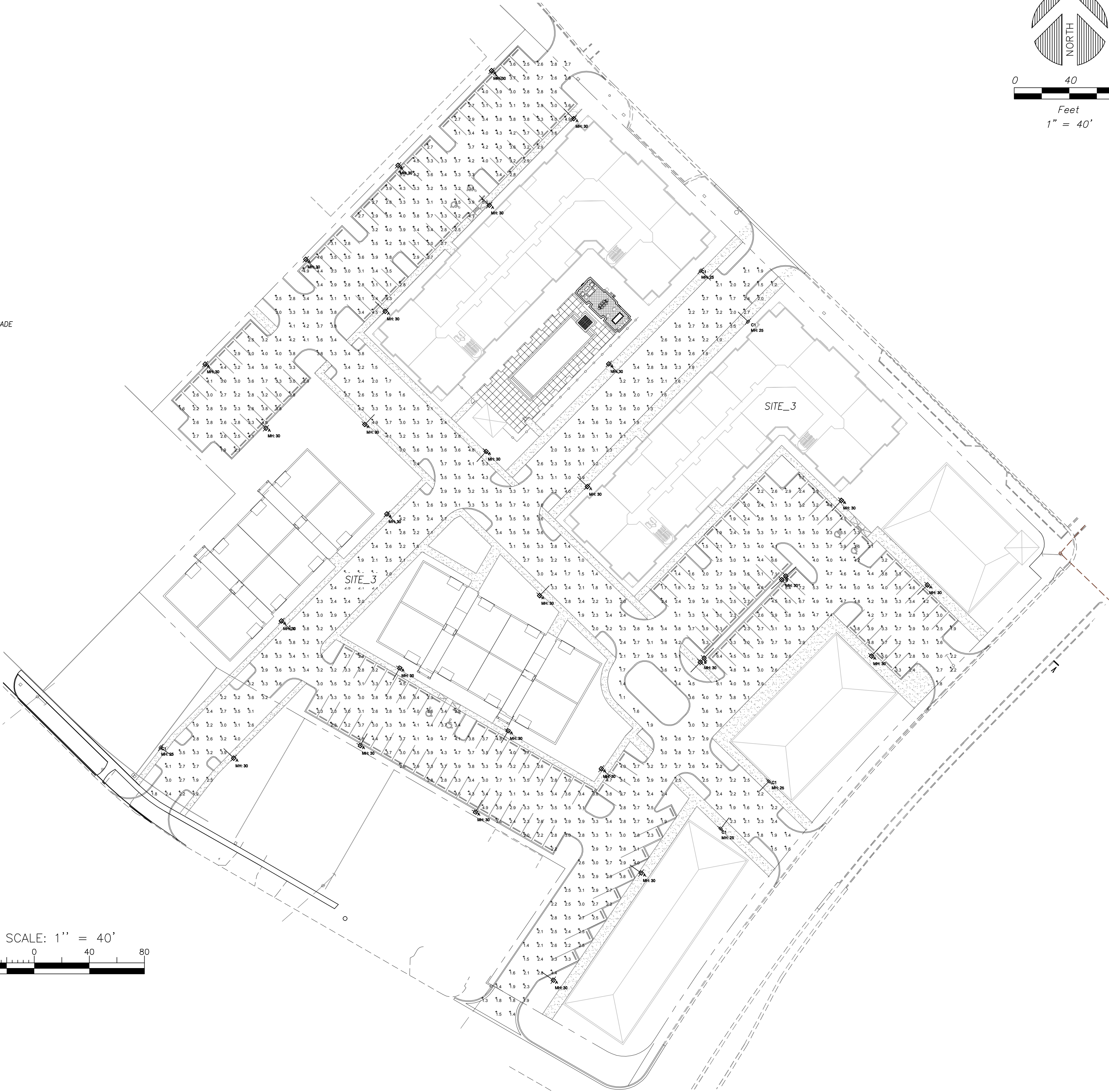
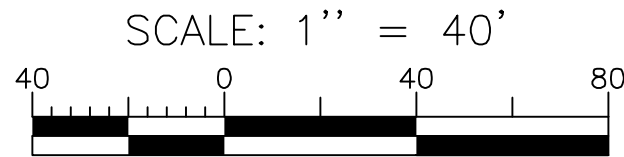
Luminaire Schedule						
Symbol	Qty	Label	Arrangement	Total Lamp Lumens	LLF	Description
	117	A	SINGLE	38000	0.684	AS2 400M SR3 (PULSE START)
	12	B	BACK-BACK	38000	0.684	(2) AS2 400M SR3 @180
	55	C1	SINGLE	25000	0.684	AS2 250M SR3 HS (PULSE START)

Calculation Summary						
Label	CalcType	Units	Avg	Max	Min	Max/Min
Site_1	Illuminance	Fc	3.14	8.3	1.1	7.55
Site_2	Illuminance	Fc	3.03	5.8	1.0	5.80
Site_3	Illuminance	Fc	3.10	8.4	1.0	8.40
Site_4	Illuminance	Fc	2.86	7.9	1.1	7.18
Site_5	Illuminance	Fc	2.90	8.2	1.0	8.20

LIGHTING FIXTURE SCHEDULE					
TYPE	MANUFACTURER / CATALOG NO.	MOUNTING	LAMP	VOLT	REMARKS
A	LITHONIA: AERIS CUTOFF AS2.400M.SR3.*SCWA.*	30' AFG (POLE TOP)	400W PSMH	TBD	* VOLTAGE, FINISH & POLE TO BE DETERMINED
B	LITHONIA: AERIS CUTOFF (2) AS2.400M.SR3.*SCWA.* @180	30' AFG (POLE TOP)	(2) 400W PSMH		* VOLTAGE, FINISH & POLE TO BE DETERMINED
C	LITHONIA: AERIS CUTOFF AS2.250MH.SR3.*SCWA.*HS	25' AFG (POLE TOP)	250W PSMH		* VOLTAGE, FINISH & POLE TO BE DETERMINED, HOUSE SIDE SHIELD

PHOTOMETRIC NOTES:

- CALCULATION POINTS ARE IN THE CENTER OF A 10' x 10' GRID IN A HORIZONTAL PLANE AT GRADE WITH METERS FACING UP.
- ALL CALCULATIONS ARE MAINTAINED ILLUMINATION VALUES AND INCLUDE LIGHT LOSS DEPRECIATION FACTORS FOR DIRT, LAMP LUMENS AND TILT (IF APPLICABLE).
- CALCULATIONS DO NOT CONSIDER THE EFFECT OF TREES AND OTHER LANDSCAPING, ETC.
- THIS PHOTOMETRIC PLAN IS FOR SITE APPROVAL AND IS NOT INTENDED AS AN ELECTRICAL CONSTRUCTION DRAWING.
- THE SYMBOL FOR POLE & FIXTURE IS SHOWN LARGER THAN ACTUAL FOR CLARITY.
- LIGHTING STANDARDS TO WITHSTAND WIND LOADING PER FLORIDA BUILDING CODE.
- ILLUMINATION LEVELS ARE PER CITY OF MARGATE CODE (LEVEL 1), 1.0 FC MINIMUM AND MAX/MIN UNIFORMITY OF 10:1.
- CALCULATIONS ARE THE PRODUCT OF THE FIXTURES AND LOCATIONS INDICATED; CHANGES AND SUBSTITUTIONS MAY AFFECT LIGHTING LEVELS AND WILL REQUIRE RE-SUBMISSION AND APPROVAL OF PHOTOMETRIC CALCULATIONS.



Photometric data provided by the lighting manufacturer. Ballbé & Associates makes no warranty, either expressed or implied, as to the accuracy of the photometric data, nor shall Ballbé & Associates be liable for the use of such data.

NO.	DATE	BY	REVISION	NO.	DATE	BY	REVISION
1	05/02/17	VJF	SITE REVISION, CALC GRID & POLES REVISED				

Designed by: V.J.F. Date: 3/2017
Drawn by: V.J.F. Date: 3/2017
Checked by: C.J.B. Date: _____

BALLBÉ & ASSOCIATES
Civil Engineering • Planning • Surveying

2737 Northeast 30th Place
Fort Lauderdale, Florida 33306
Phone: (954) 491-7811
Authorization No. EB-26343

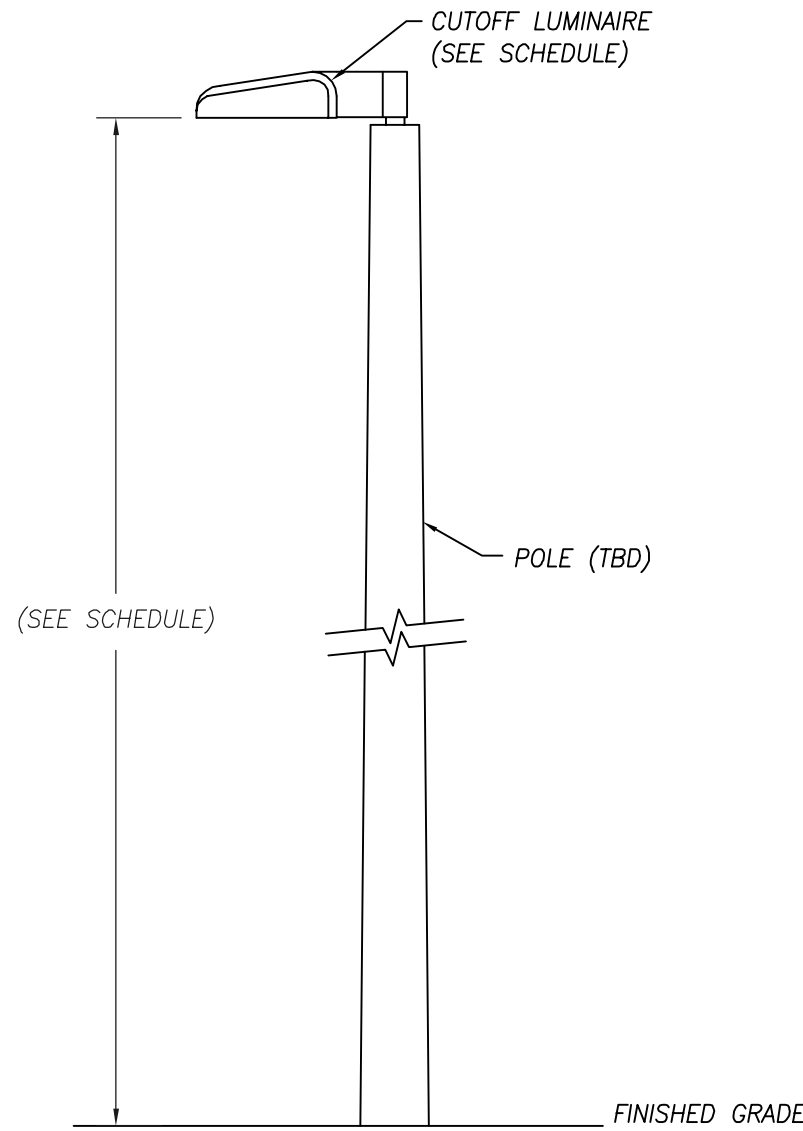
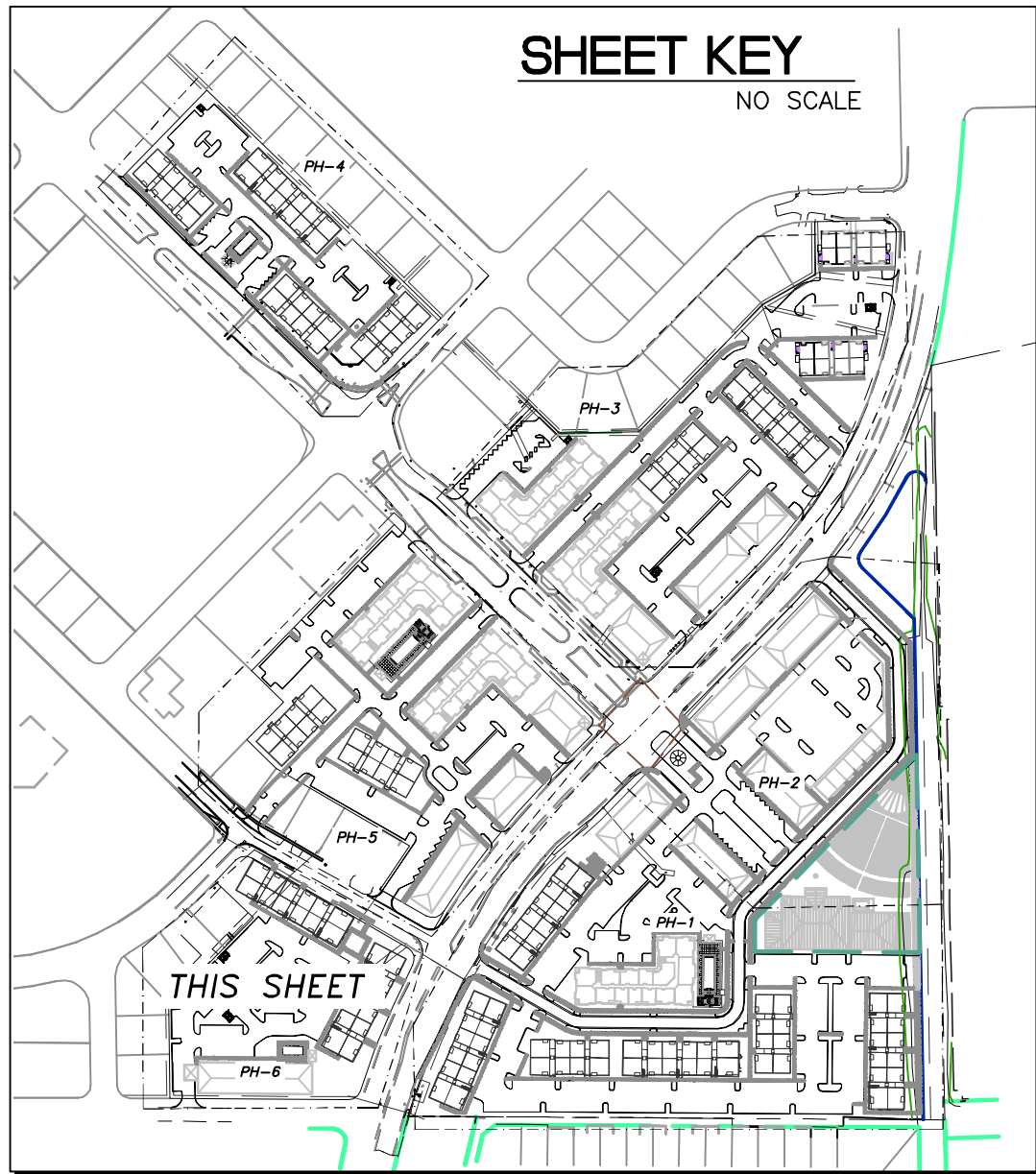
Electrical Engineer: Vernon Jay Franke
Registered Engineer Number: _____
State of Florida
Date: 3/15/17
49466

PARKING LOT LIGHTING PHOTOMETRIC PLAN

MARGATE CITY CENTER
NEW URBAN COMMUNITIES

Project Number:
201707

Sheet Number:
PH-5



CUTOFF FIXTURE POLE
(N.T.S.)

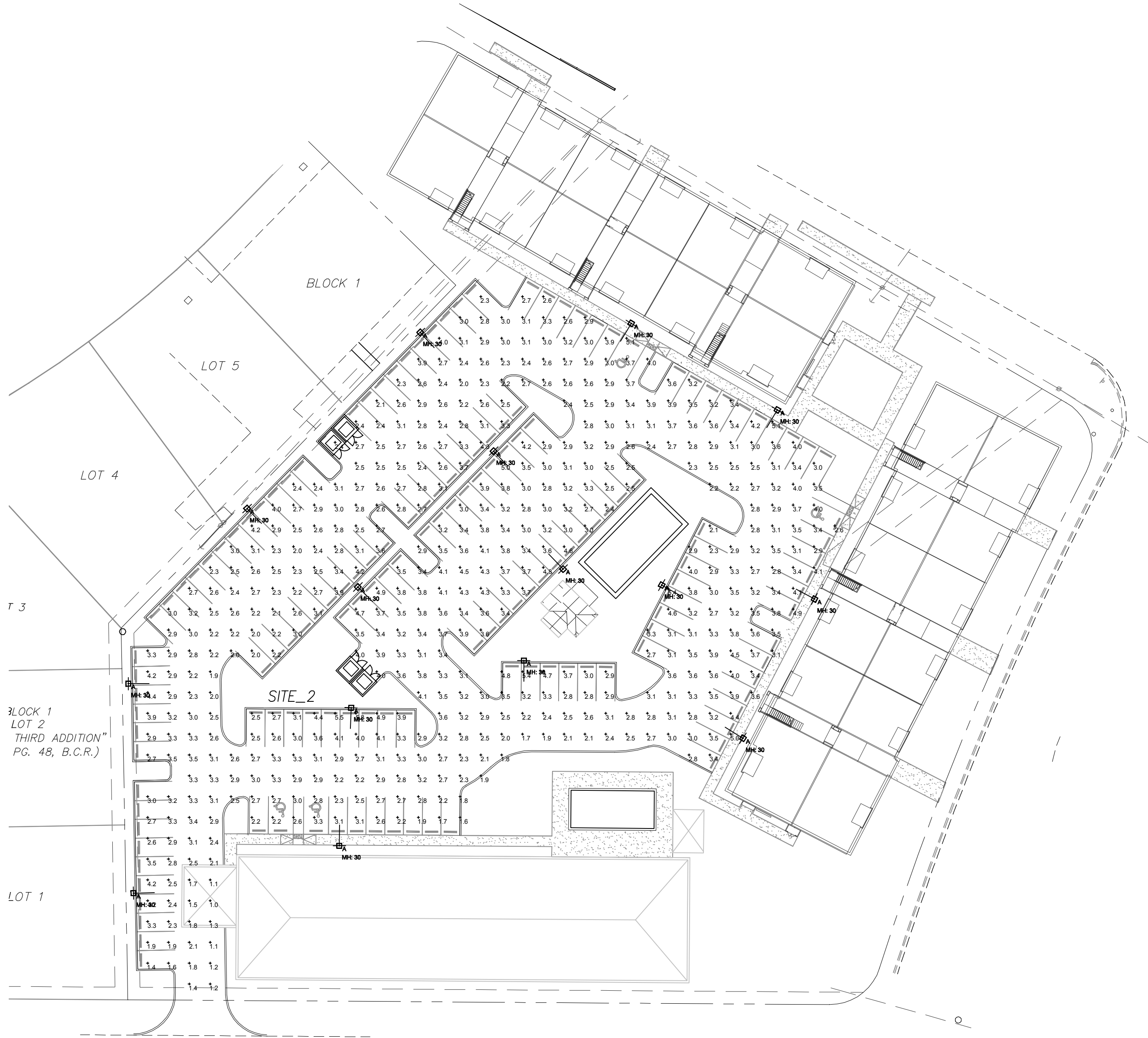
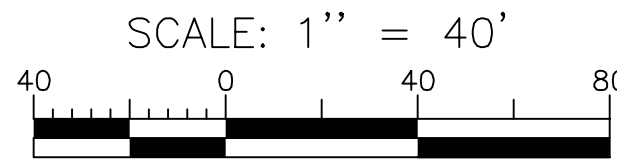
Luminaire Schedule						
Symbol	Qty	Label	Arrangement	Total Lamp Lumens	LLF	Description
	117	A	SINGLE	38000	0.684	AS2 400M SR3 (PULSE START)
	12	B	BACK-BACK	38000	0.684	(2) AS2 400M SR3 @180
	55	C1	SINGLE	25000	0.684	AS2 250M SR3 HS (PULSE START)

Calculation Summary						
Label	CalcType	Units	Avg	Max	Min	Max/Min
Site_1	Illuminance	Fc	3.14	8.3	1.1	7.55
Site_2	Illuminance	Fc	3.03	5.8	1.0	5.80
Site_3	Illuminance	Fc	3.10	8.4	1.0	8.40
Site_4	Illuminance	Fc	2.86	7.9	1.1	7.18
Site_5	Illuminance	Fc	2.90	8.2	1.0	8.20

LIGHTING FIXTURE SCHEDULE					
TYPE	MANUFACTURER / CATALOG NO.	MOUNTING	LAMP	VOLT	REMARKS
A	LITHONIA: AERIS CUTOFF AS2.400M.SR3.*.SCWA.*	30' AFG (POLE TOP)	400W PSMH	TBD	* VOLTAGE, FINISH & POLE TO BE DETERMINED
B	LITHONIA: AERIS CUTOFF (2) AS2.400M.SR3.*.SCWA.* @180	30' AFG (POLE TOP)	(2) 400W PSMH		* VOLTAGE, FINISH & POLE TO BE DETERMINED
C	LITHONIA: AERIS CUTOFF AS2.250M.H.SR3.*.SCWA.*.HS	25' AFG (POLE TOP)	250W PSMH		* VOLTAGE, FINISH & POLE TO BE DETERMINED, HOUSE SIDE SHIELD

PHOTOMETRIC NOTES:

- CALCULATION POINTS ARE IN THE CENTER OF A 10' x 10' GRID IN A HORIZONTAL PLANE AT GRADE WITH METERS FACING UP.
- ALL CALCULATIONS ARE MAINTAINED ILLUMINATION VALUES AND INCLUDE LIGHT LOSS DEPRECIATION FACTORS FOR DIRT, LAMP LUMENS AND TILT (IF APPLICABLE).
- CALCULATIONS DO NOT CONSIDER THE EFFECT OF TREES AND OTHER LANDSCAPING, ETC.
- THIS PHOTOMETRIC PLAN IS FOR SITE APPROVAL AND IS NOT INTENDED AS AN ELECTRICAL CONSTRUCTION DRAWING.
- THE SYMBOL FOR POLE & FIXTURE IS SHOWN LARGER THAN ACTUAL FOR CLARITY.
- LIGHTING STANDARDS TO WITHSTAND WIND LOADING PER FLORIDA BUILDING CODE.
- ILLUMINATION LEVELS ARE PER CITY OF MARGATE CODE (LEVEL 1), 1.0 FC MINIMUM AND MAXIMUM UNIFORMITY OF 10:1.
- CALCULATIONS ARE THE PRODUCT OF THE FIXTURES AND LOCATIONS INDICATED; CHANGES AND SUBSTITUTIONS MAY AFFECT LIGHTING LEVELS AND WILL REQUIRE RE-SUBMISSION AND APPROVAL OF PHOTOMETRIC CALCULATIONS.



Photometric data provided by the lighting manufacturer. Ballbé & Associates makes no warranty, either expressed or implied, as to the accuracy of the photometric data, nor shall Ballbé & Associates be liable for the use of such data.

NO.	DATE	BY	REVISION	NO.	DATE	BY	REVISION
1	05/02/17	VJF	SITE REVISION, CALC GRID & POLES REVISED				

Designed by: V.J.F. Date: 3/2017
Drawn by: V.J.F. Date: 3/2017
Checked by: C.J.B. Date: _____

BALLBÉ & ASSOCIATES
Civil Engineering • Planning • Surveying

2737 Northeast 30th Place
Fort Lauderdale, Florida 33306
Phone: (954) 491-7811
Authorization No. EB-26343

Electrical Engineer: Vernon Jay Franke
Registered Engineer Number: _____
State of Florida
Date: 3/15/17
49466

PARKING LOT LIGHTING PHOTOMETRIC PLAN

MARGATE CITY CENTER
NEW URBAN COMMUNITIES

Project Number:
201707

Sheet Number:
PH-6