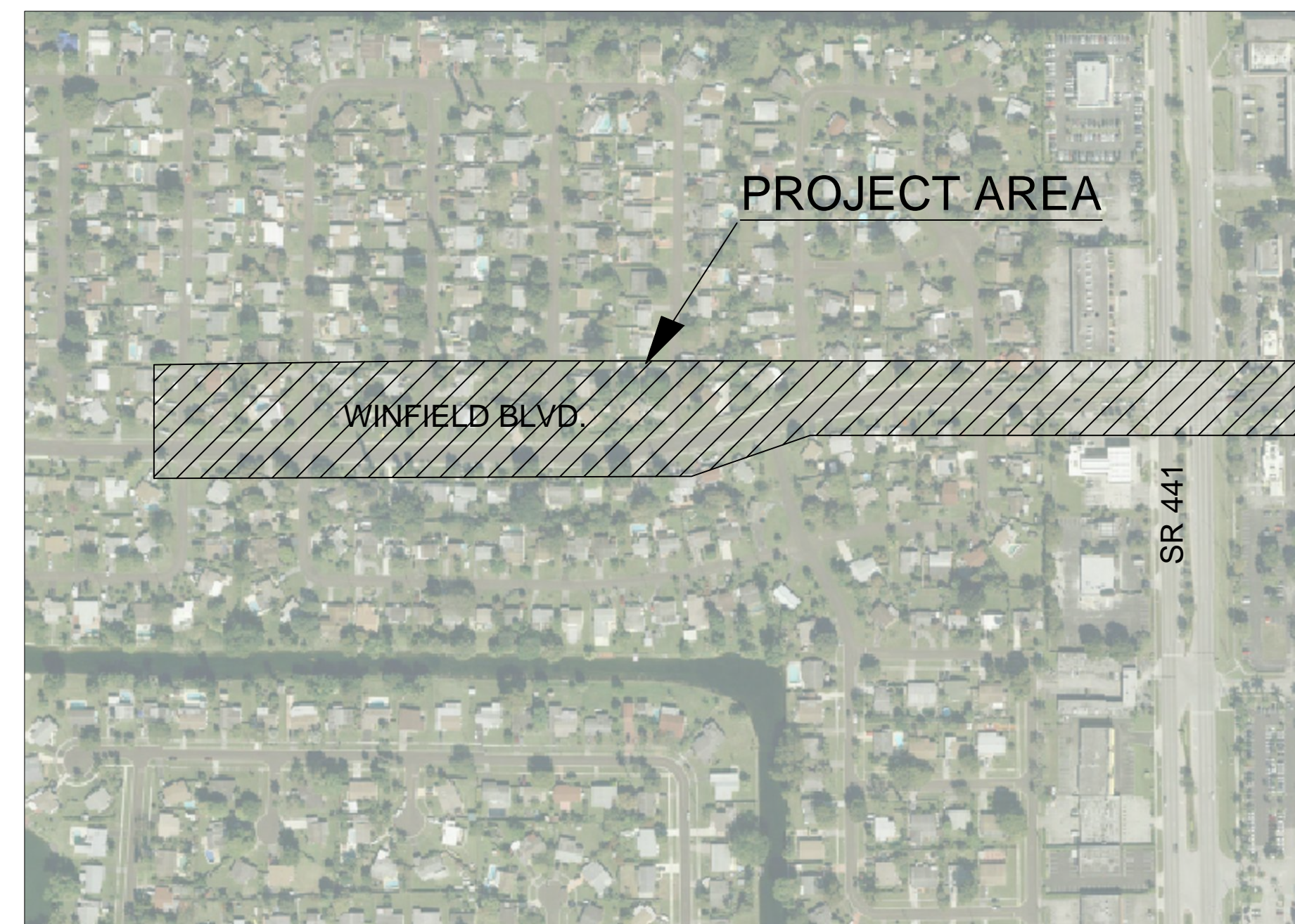
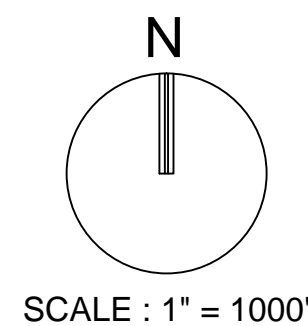
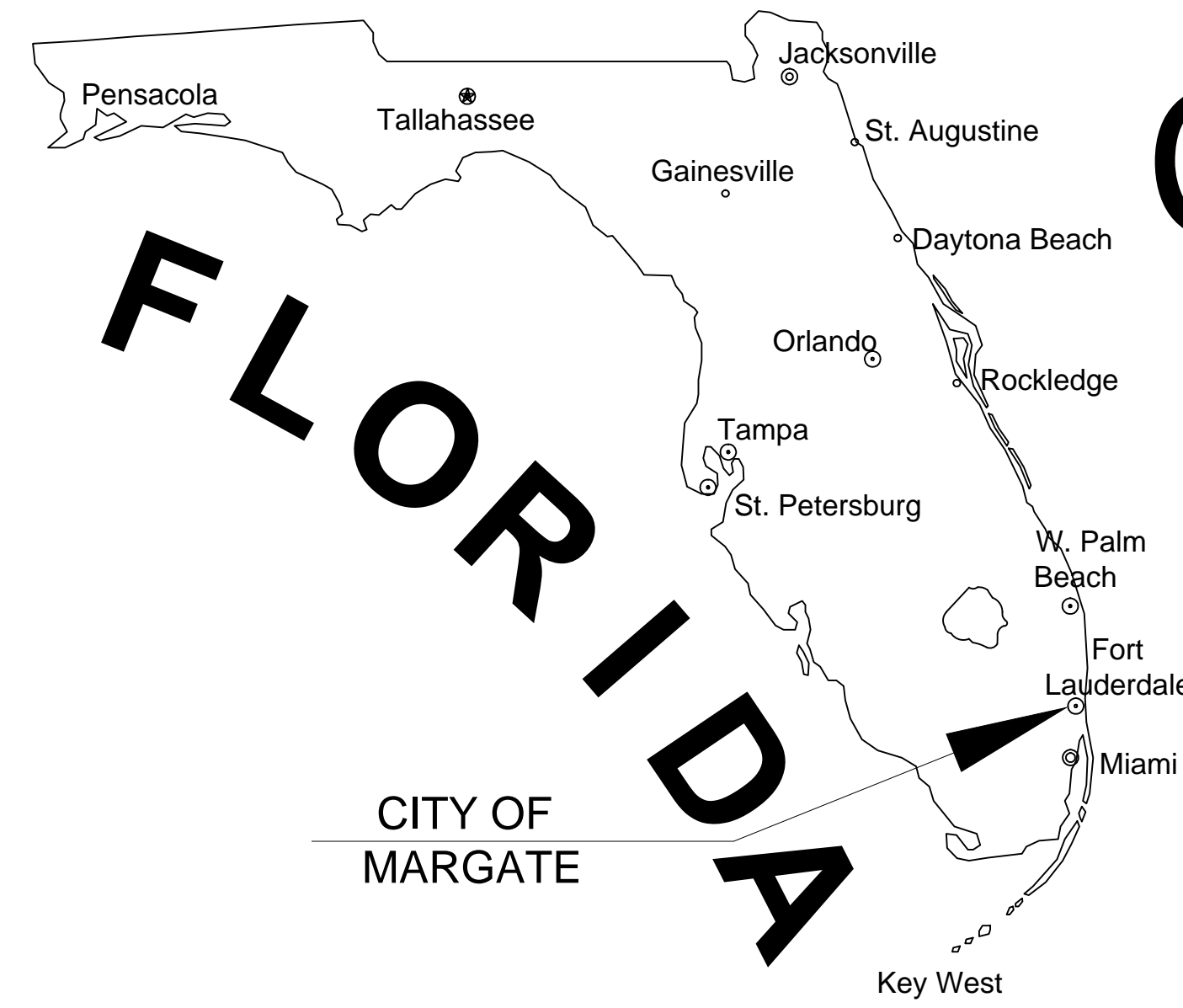


# WINFIELD BOULEVARD TRAFFIC CALMING & STREETSCAPE IMPROVEMENTS

CITY OF MARGATE  
BROWARD COUNTY, FLORIDA



INDEX OF SHEETS		
Sheet Sequence No.	Sheet Identification	Sheet Title
	--	COVER
1	GI-001	SPECIFICATIONS
2	GI-002	LEGEND
3	GI-003	GENERAL NOTES
4	CP-101	ENGINEERING PLAN
5	CP-102	ENGINEERING PLAN
6	CP-103	ENGINEERING PLAN
7	CP-501-502	ENGINEERING DETAILS
8	CM-101	PAVEMENT MARKING & SIGNING PLAN
9	CM-102	PAVEMENT MARKING & SIGNING PLAN
10	CM-103	PAVEMENT MARKING & SIGNING PLAN
11	LP-101	LANDSCAPE PLAN
12	LP-102	LANDSCAPE PLAN
13	LP-103	LANDSCAPE PLAN
14	LD-101	LANDSCAPE DETAILS
15	LN-101	LANDSCAPE NOTES
16	IR-101	IRRIGATION PLAN
17	IR-102	IRRIGATION PLAN
18	IR-103	IRRIGATION PLAN
19	IR-104	IRRIGATION DETAILS & NOTES

ALL ELEVATIONS SHOWN ON THESE PLANS  
ARE BASED ON NAVD 1988 DATUM

## LOCATION MAP

SECTION 24, TOWNSHIP 48 S, RANGE 41 E

PREPARED FOR:  
CITY OF MARGATE CRA  
5790 MARGATE BOULEVARD



STEPHEN D. WILLIAMS, P.E.  
FLORIDA REG. NO. 32090  
(FOR THE FIRM)

PROJECT No. 09359.01 FEBRUARY 2017

THESE PLANS MAY HAVE BEEN  
REDUCED IN SIZE BY REPRODUCTION.  
THIS MUST BE CONSIDERED WHEN  
OBTAINING SCALED DATA.







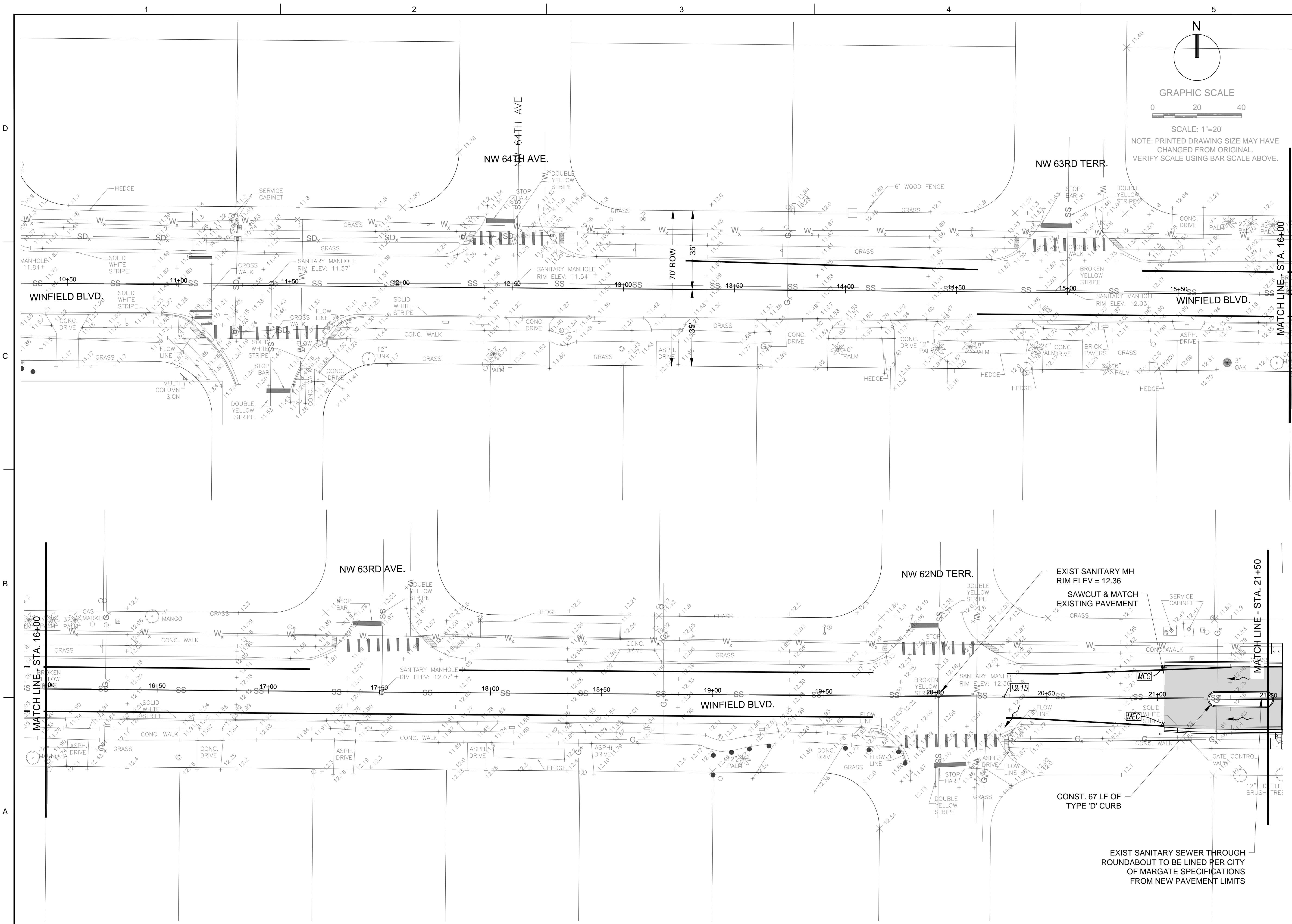












301 East Atlantic Boulevard  
Pompano Beach, Florida 33060-6643

2160 NW 82nd Avenue  
Doral, Florida 33122

(954) 788-3400 FAX (954) 788-3500

Florida Certificate of  
Authorization # - 7928

BID / CONTRACT NO. :

REVISIONS

NO.	DESCRIPTION	DATE

**PRELIMINARY PLAN  
NOT FOR CONSTRUCTION**  
THESE PLANS ARE NOT FULLY PERMITTED  
AND ARE SUBJECT TO REVISIONS MADE  
DURING THE PERMITTING PROCESS.  
RESPONSIBILITY FOR THE USE OF THESE  
PLANS PRIOR TO OBTAINING PERMITS  
FROM ALL AGENCIES HAVING JURISDICTION  
OVER THE PROJECT WILL FALL SOLELY  
UPON THE USER.

# WINFIELD BOULEVARD IMPROVEMENTS CITY OF MARGATE

SCALE:	AS NOTED
DATE ISSUED:	FEBRUARY 10, 2017
DRAWN BY:	MC
DESIGNED BY:	MC
CHECKED BY:	SW

STEPHEN D. WILLIAMS, P.E.  
FLORIDA REG. NO. 32090  
(FOR THE FIRM)

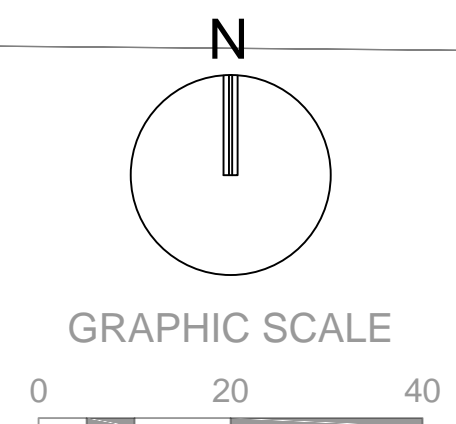
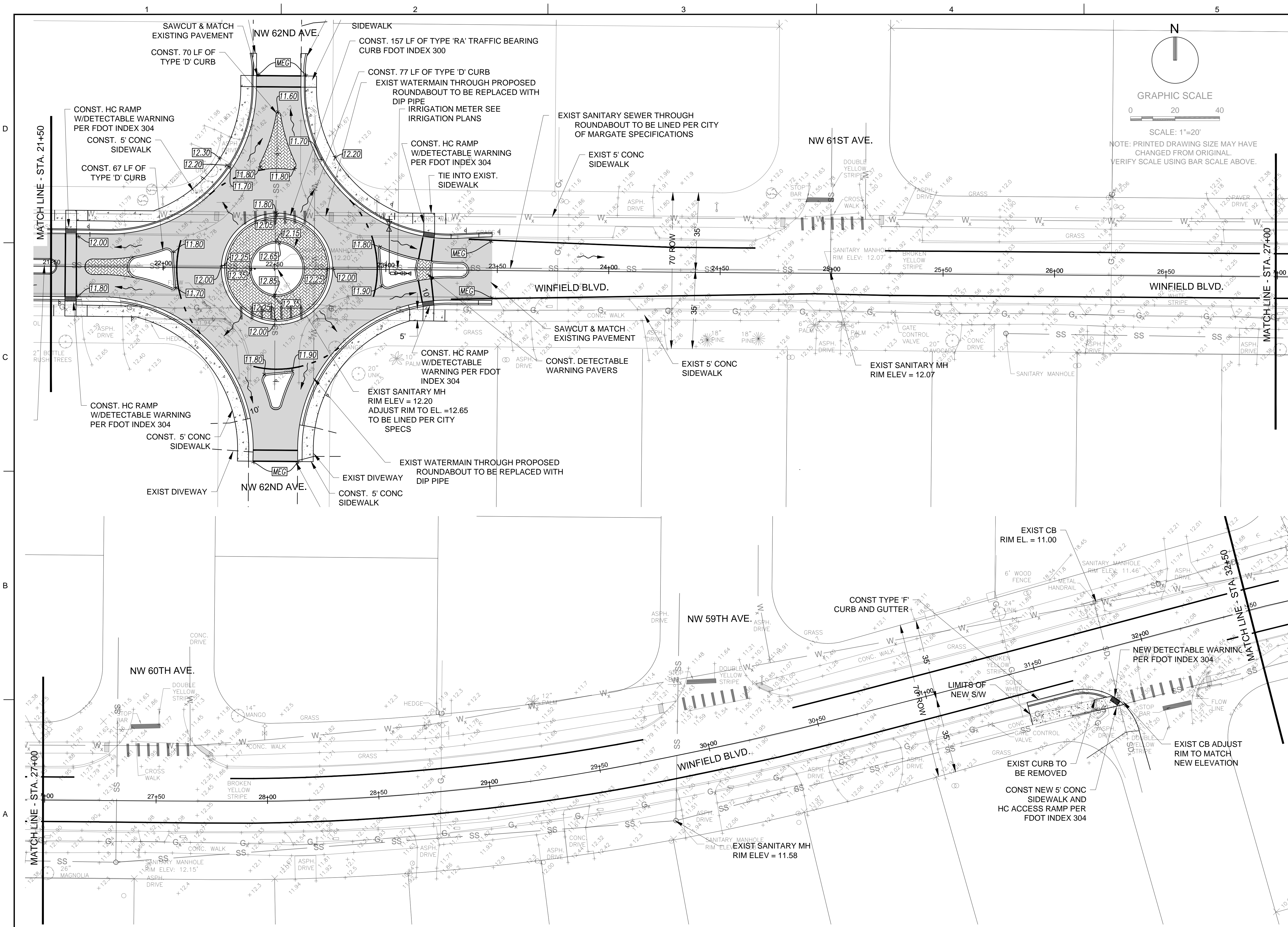
## SHEET TITLE ENGINEERING PLANS

SHEET NUMBER  
**CP-101**

SHEET of 16

PROJECT NO. 09359.01

Drawing name: R:\09359.01 Winfield Boulevard City of Margate\Engineering\09359.01-CP-101-PDD PLANS.dwg Layout Name: CP-101 Plotted on: Mar 09, 2017 1:58pm Plotted by: mcmorion



**KEITH & ASSOCIATES, INC.**  
consulting engineers

301 East Atlantic Boulevard  
Pompano Beach, Florida 33060-6643

2160 NW 82nd Avenue  
Doral, Florida 33122

(954) 788-3400 FAX (954) 788-3500

Florida Certificate of  
Authorization # - 7928

BID / CONTRACT NO. :

REVISIONS		
NO.	DESCRIPTION	DATE

**PRELIMINARY PLAN  
NOT FOR CONSTRUCTION**  
THESE PLANS ARE NOT FULLY PERMITTED  
AND ARE SUBJECT TO REVISIONS MADE  
DURING THE PERMITTING PROCESS.  
RESPONSIBILITY FOR THE USE OF THESE  
PLANS PRIOR TO OBTAINING PERMITS  
FROM ALL AGENCIES HAVING JURISDICTION  
OVER THE PROJECT WILL FALL SOLELY  
UPON THE USER.

## WINFIELD BOULEVARD IMPROVEMENTS CITY OF MARGATE

SCALE: AS NOTED  
DATE ISSUED: FEBRUARY 10, 2017  
DRAWN BY: MC  
DESIGNED BY: MC  
CHECKED BY: SW

STEPHEN D. WILLIAMS, P.E.  
FLORIDA REG. NO. 32090  
(FOR THE FIRM)

## ENGINEERING PLANS

SHEET NUMBER  
**CP-102**

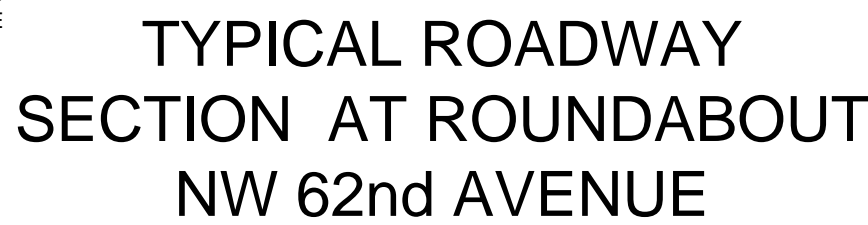
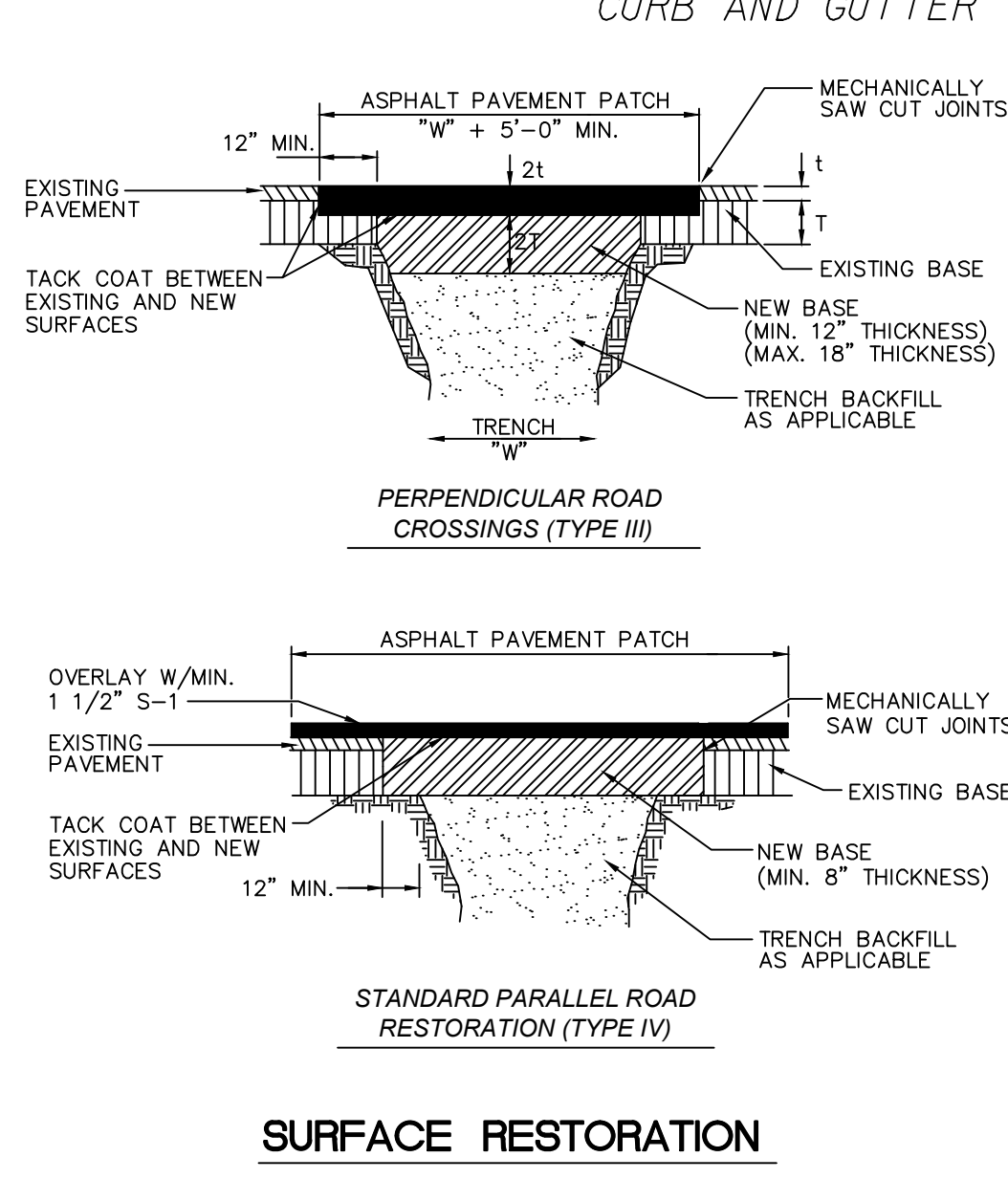
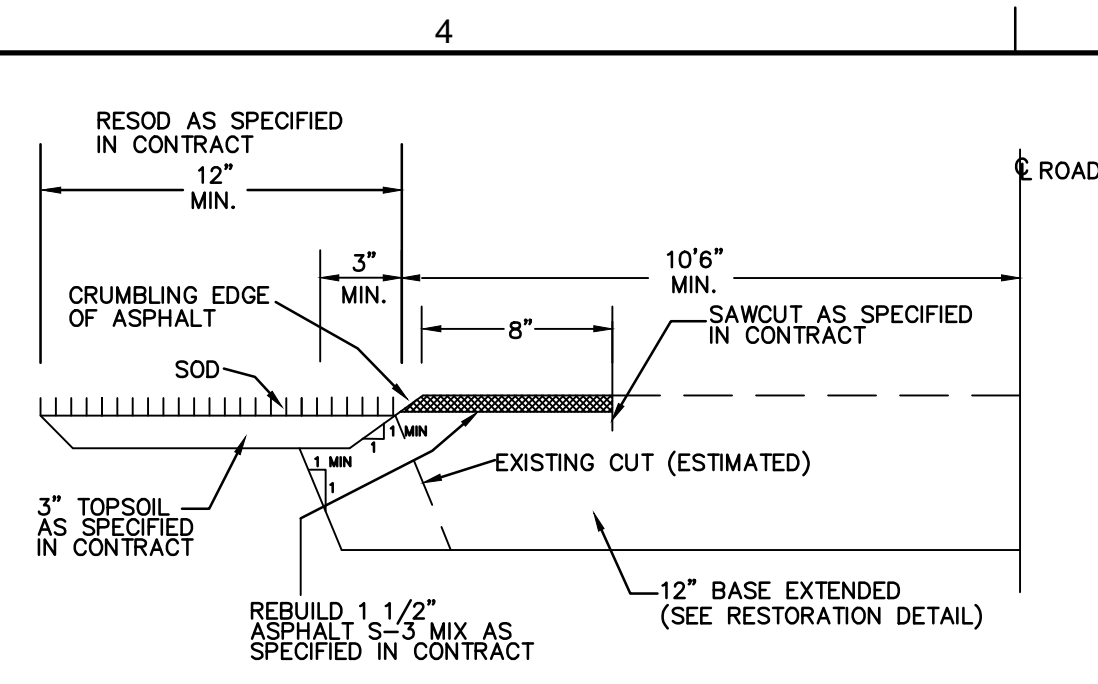
SHEET of 16

PROJECT NO. 09359.01

Drawing name: R:\09359.01 Winfield Boulevard City of Margate\Engineering\CP-102 CP-101-FDOT PLANS.dwg Layout Name: CP-102 Plotted by: mcmorison Plotted on: Mar 09, 2017 9:21am







Florida Certificate of  
Authorization # - 7928

**PRELIMINARY PLAN**  
**NOT FOR CONSTRUCTION**

THESE PLANS ARE NOT FULLY PERMITTED  
AND ARE SUBJECT TO REVISIONS MADE  
DURING THE PERMITTING PROCESS.  
RESPONSIBILITY FOR THE USE OF THESE  
PLANS PRIOR TO OBTAINING PERMITS  
FROM ALL AGENCIES HAVING JURISDICTION  
OVER THE PROJECT WILL FALL SOLELY  
UPON THE USER.

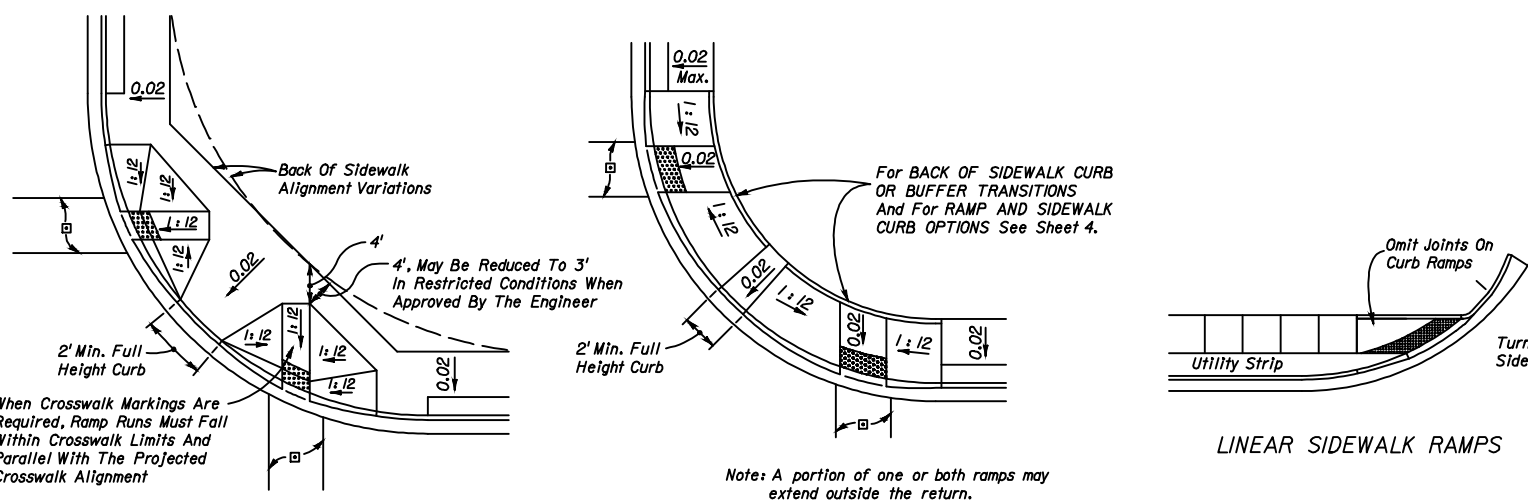
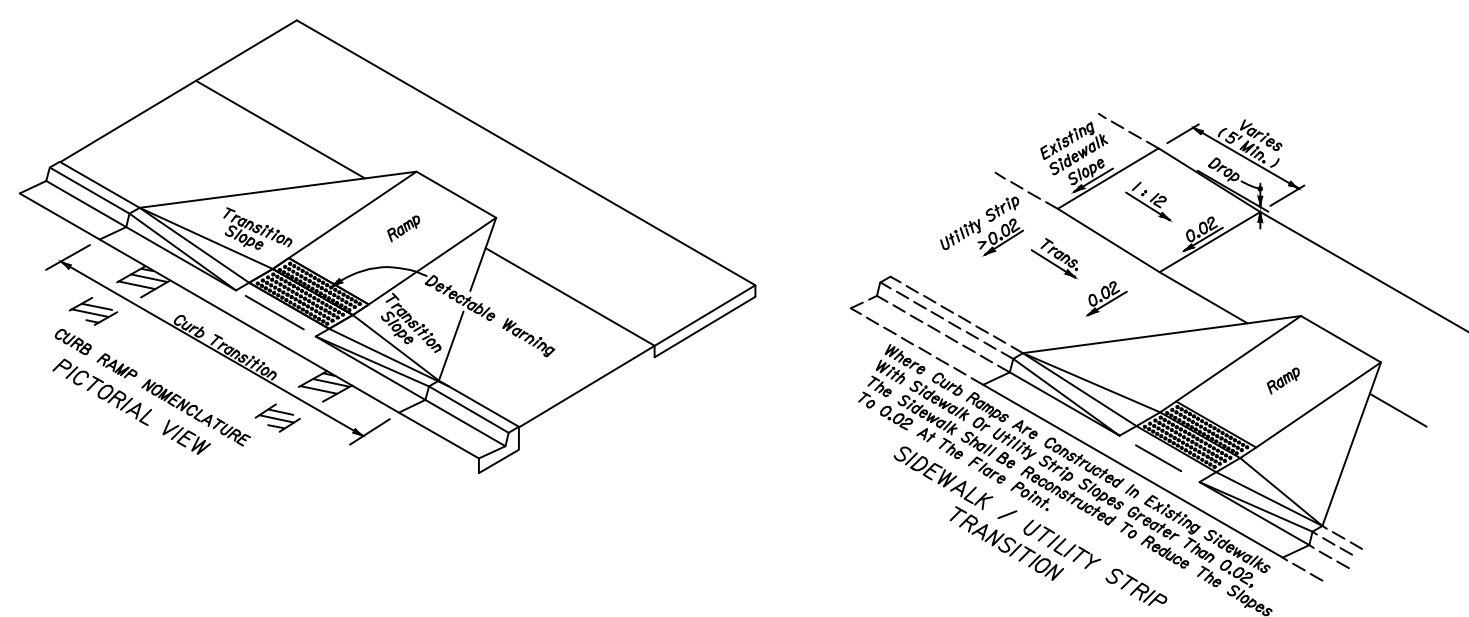
CHECKED BY:	SW
-------------	----

SHEET of

PROJECT NO. 09359.01



D

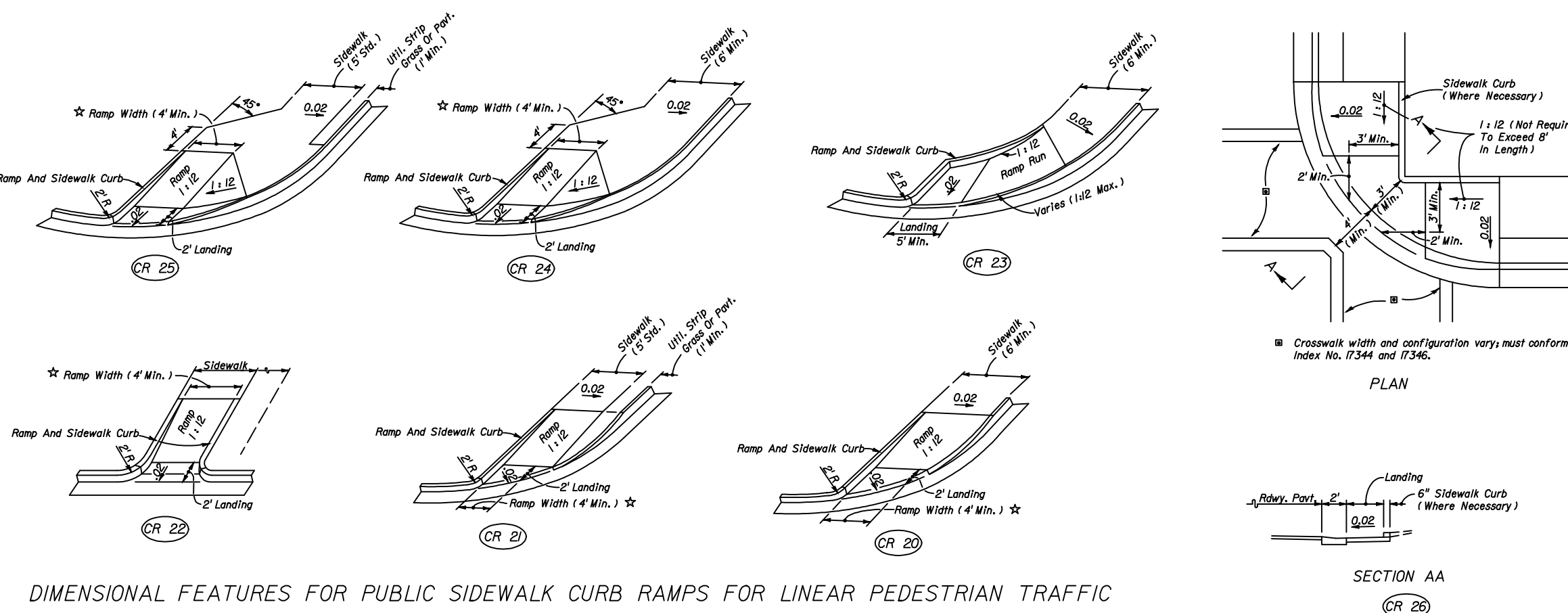


TYPICAL PLACEMENT OF PUBLIC SIDEWALK CURB RAMP AT CURBED RETURNS

PUBLIC SIDEWALK CURB RAMP

Sheet No.  
1 of 6  
Index No.  
304

B



MONOLITHIC CAST CURB

SEPARATELY CAST CURB

RAMP AND SIDEWALK CURB OPTIONS

BACK OF SIDEWALK CURB OR BUFFER TRANSITION

SECTION AA

CR 20

CR 21

CR 22

CR 23

CR 24

CR 25

CR 26

CR 27

CR 28

CR 29

CR 30

CR 31

CR 32

CR 33

CR 34

CR 35

CR 36

CR 37

CR 38

CR 39

CR 40

CR 41

CR 42

CR 43

CR 44

CR 45

CR 46

CR 47

CR 48

CR 49

CR 50

CR 51

CR 52

CR 53

CR 54

CR 55

CR 56

CR 57

CR 58

CR 59

CR 60

CR 61

CR 62

CR 63

CR 64

CR 65

CR 66

CR 67

CR 68

CR 69

CR 70

CR 71

CR 72

CR 73

CR 74

CR 75

CR 76

CR 77

CR 78

CR 79

CR 80

CR 81

CR 82

CR 83

CR 84

CR 85

CR 86

CR 87

CR 88

CR 89

CR 90

CR 91

CR 92

CR 93

CR 94

CR 95

CR 96

CR 97

CR 98

CR 99

CR 100

CR 101

CR 102

CR 103

CR 104

CR 105

CR 106

CR 107

CR 108

CR 109

CR 110

CR 111

CR 112

CR 113

CR 114

CR 115

CR 116

CR 117

CR 118

CR 119

CR 120

CR 121

CR 122

CR 123

CR 124

CR 125

CR 126

CR 127

CR 128

CR 129

CR 130

CR 131

CR 132

CR 133

CR 134

CR 135

CR 136

CR 137

CR 138

CR 139

CR 140

CR 141

CR 142

CR 143

CR 144

CR 145

CR 146

CR 147

CR 148

CR 149

CR 150

CR 151

CR 152

CR 153

CR 154

CR 155

CR 156

CR 157

CR 158

CR 159

CR 160

CR 161

CR 162

CR 163

CR 164

CR 165

CR 166

CR 167

CR 168

CR 169

CR 170

CR 171

CR 172

CR 173

CR 174

CR 175

CR 176

CR 177

CR 178

CR 179

CR 180

CR 181

CR 182

CR 183

CR 184

CR 185

CR 186

CR 187

CR 188

CR 189

CR 190

CR 191

CR 192

CR 193

CR 194

CR 195

CR 196

CR 197

CR 198

CR 199

CR 200

CR 201

CR 202

CR 203

CR 204

CR 205

CR 206

CR 207

CR 208

CR 209

CR 210

CR 211

CR 212

CR 213

CR 214

CR 215

CR 216

CR 217

CR 218

CR 219

CR 220

CR 221

CR 222

CR 223

CR 224

CR 225

CR 226

CR 227

CR 228

CR 229

CR 230

CR 231

CR 232

CR 233

CR 234

CR 235

CR 236

CR 237

CR 238

CR 239

CR 240

CR 241

CR 242

CR 243

CR 244

CR 245

CR 246

CR 247

CR 248

CR 249

CR 250

CR 251

CR 252

CR 253

CR 254

CR 255

CR 256

CR 257

CR 258

CR 259

CR 260

CR 261

CR 262

CR 263

CR 264

CR 265

CR 266

CR 267

CR 268

CR 269

CR 270

CR 271

CR 272

CR 273

CR 274

CR 275

CR 276

CR 277

CR 278

CR 279

CR 280

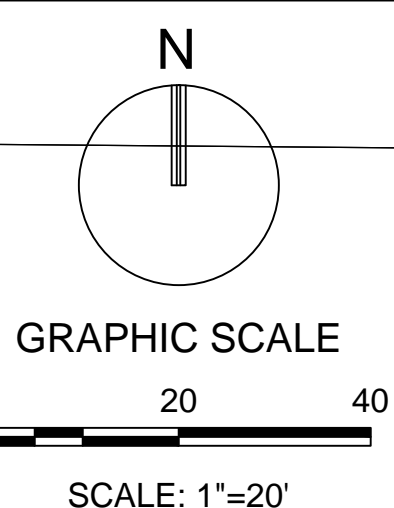
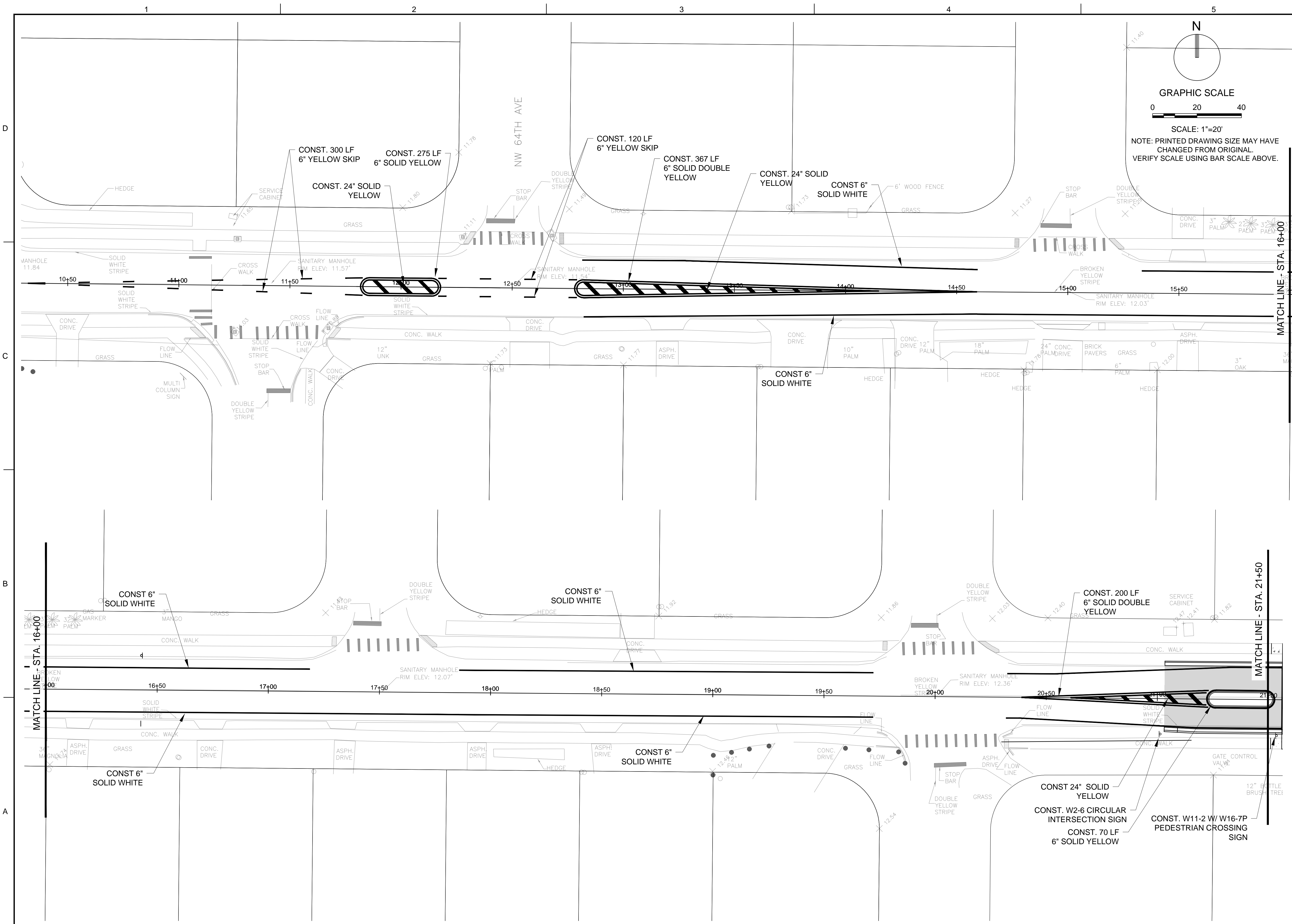
CR 281

CR 282

CR 283

CR 284





**KEITH & ASSOCIATES, INC.**  
*consulting engineers*

301 East Atlantic Boulevard  
Pompano Beach, Florida 33060-6643

2160 NW 82<sup>nd</sup> Avenue  
Doral, Florida 33122

(954) 788-3400 FAX (954) 788-3500

Florida Certificate of  
Authorization # - 7928

BID / CONTRACT NO. :

REVISIONS		
NO.	DESCRIPTION	DATE

**PRELIMINARY PLAN  
NOT FOR CONSTRUCTION**  
THESE PLANS ARE NOT FULLY PERMITTED  
AND ARE SUBJECT TO REVISIONS MADE  
DURING THE PERMITTING PROCESS.  
RESPONSIBILITY FOR THE USE OF THESE  
PLANS PRIOR TO OBTAINING PERMITS  
FROM ALL AGENCIES HAVING JURISDICTION  
OVER THE PROJECT WILL FALL SOLELY  
UPON THE USER.

**WINFIELD  
BOULEVARD  
IMPROVEMENTS  
CITY OF  
MARGATE**

SCALE:	AS NOTED
DATE ISSUED:	FEBRUARY 10, 2017
DRAWN BY:	MC
DESIGNED BY:	MC
CHECKED BY:	SW

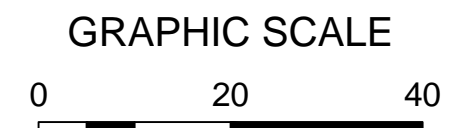
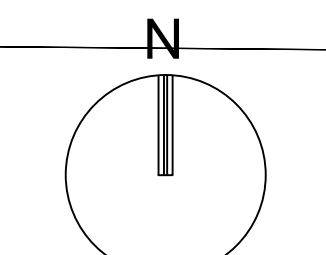
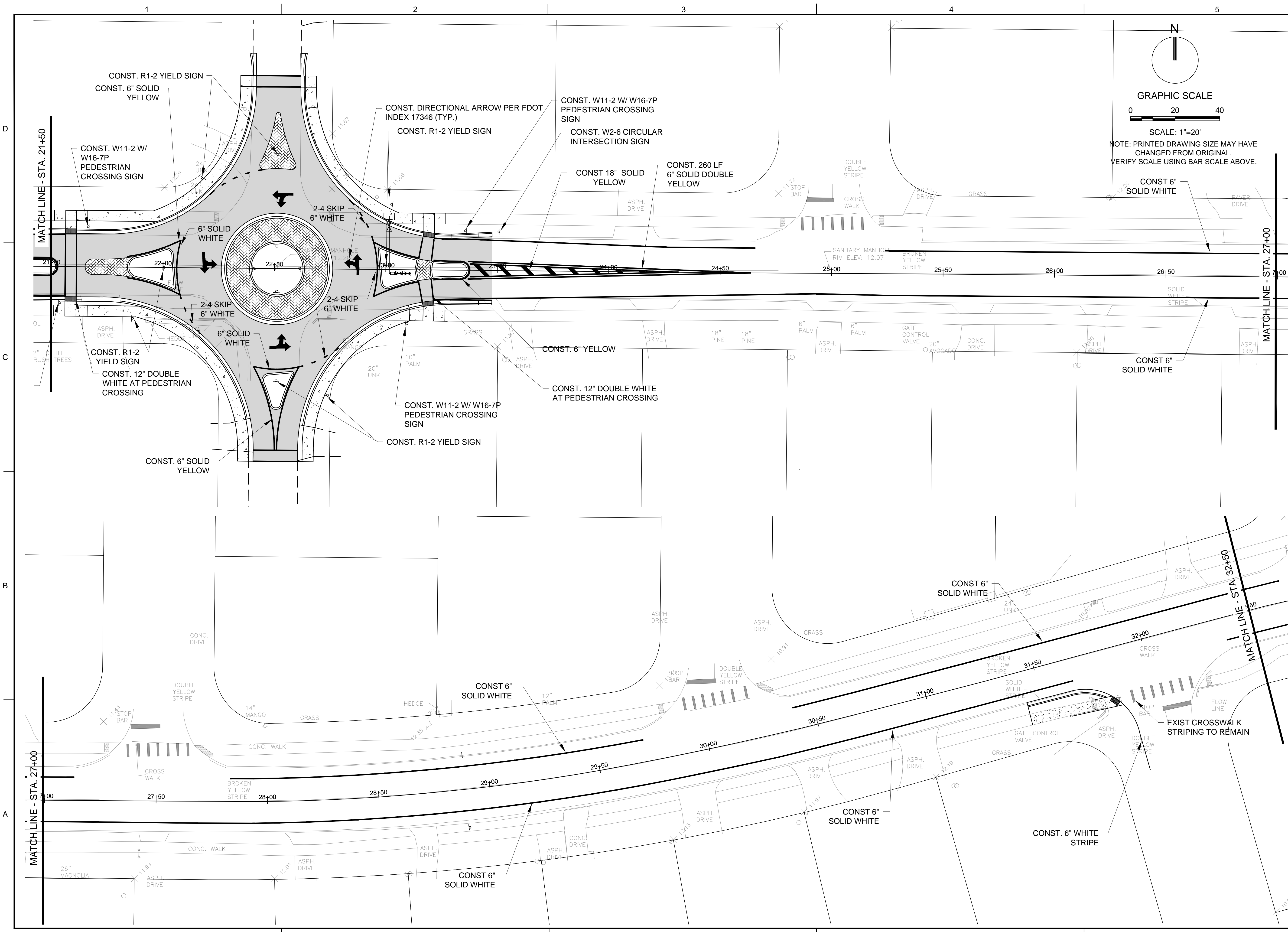
STEPHEN D. WILLIAMS, P.E.  
FLORIDA REG. NO. 32090  
(FOR THE FIRM)

**SHEET TITLE**  
**PAVEMENT  
MARKING  
AND SIGNING PLAN**

SHEET NUMBER	
CM-101	
SHEET	of 16
PROJECT NO. 09359.01	

Drawing name: N:\09359.01 Winfield Boulevard City of Margate\Engineering\Auto\09359.01-QM-101-PAVEMENT MARKING PLANS.dwg    Printed on: May 08, 2017 - 9:07am    Layout Name: Cdk1-01





SCALE: 1"=20'  
NOTE: PRINTED DRAWING SIZE MAY HAVE  
CHANGED FROM ORIGINAL.  
VERIFY SCALE USING BAR SCALE ABOVE.



301 East Atlantic Boulevard  
Pompano Beach, Florida 33060-6643

2160 NW 82nd Avenue  
Doral, Florida 33122

(954) 788-3400 FAX (954) 788-3500

Florida Certificate of  
Authorization # - 7928

BID / CONTRACT NO. :

REVISIONS

NO.	DESCRIPTION	DATE

**PRELIMINARY PLAN  
NOT FOR CONSTRUCTION**  
THESE PLANS ARE NOT FULLY PERMITTED  
AND ARE SUBJECT TO REVISIONS MADE  
DURING THE PERMITTING PROCESS.  
RESPONSIBILITY FOR THE USE OF THESE  
PLANS PRIOR TO OBTAINING PERMITS  
FROM ALL AGENCIES HAVING JURISDICTION  
OVER THE PROJECT WILL FALL SOLELY  
UPON THE USER.

# WINFIELD BOULEVARD IMPROVEMENTS CITY OF MARGATE

SCALE: AS NOTED  
DATE ISSUED: FEBRUARY 10, 2017  
DRAWN BY: MC  
DESIGNED BY: MC  
CHECKED BY: SW

STEPHEN D. WILLIAMS, P.E.  
FLORIDA REG. NO. 32090  
(FOR THE FIRM)

## SHEET TITLE PAVEMENT MARKING AND SIGNING PLAN

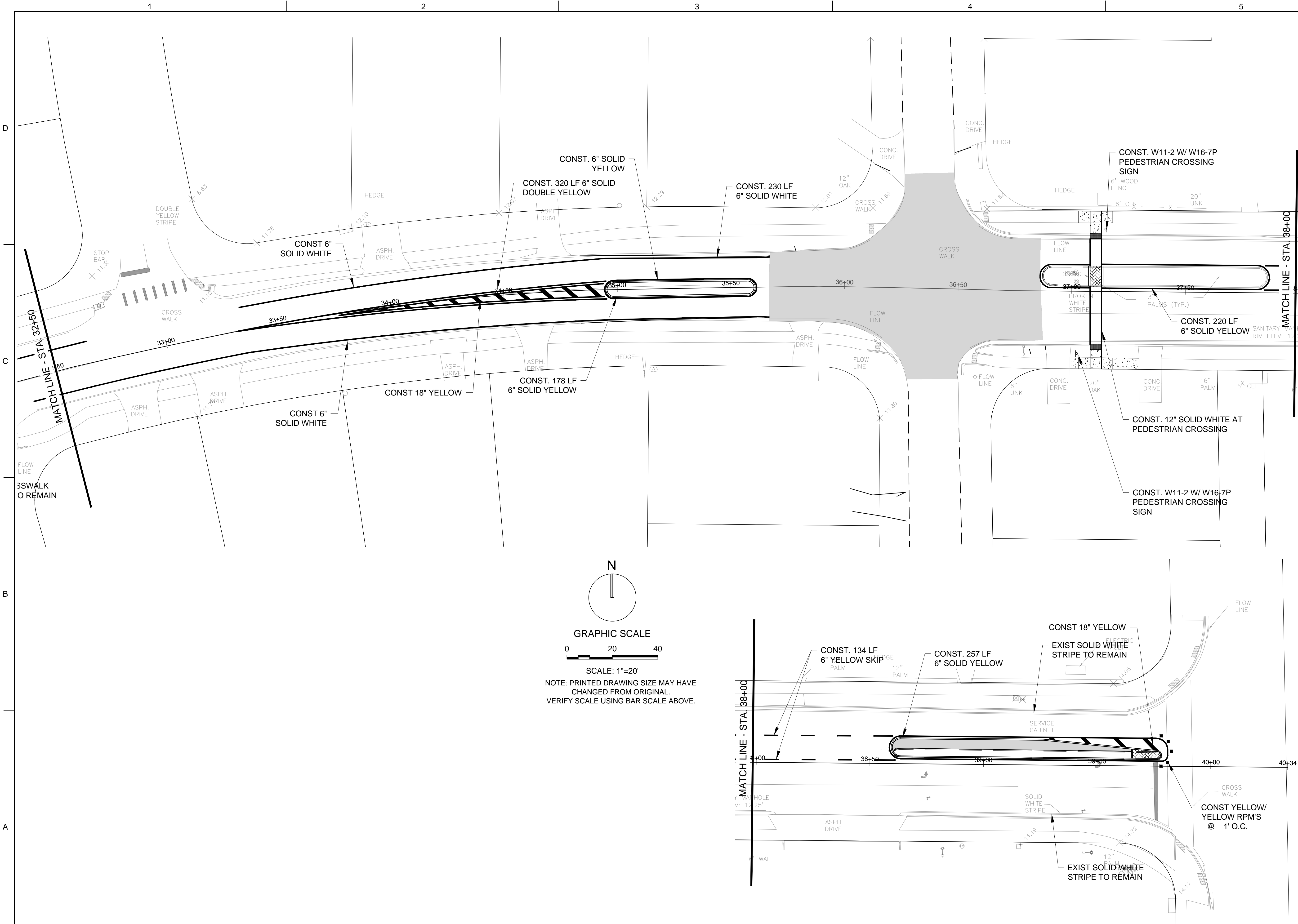
SHEET NUMBER  
**CM-102**

SHEET of 16

PROJECT NO. 09359.01

Drawing name: N:\090359\01 Winfield Boulevard City of Margate\Engineering\090359-01-CM-101-PAVEMENT MARKING PLANS.dwg Layout Name: CM-102 Plotted on: May 08, 2017 - 9:34am





**KEITH & ASSOCIATES, INC.**  
consulting engineers

301 East Atlantic Boulevard  
Pompano Beach, Florida 33060-6643

2160 NW 82<sup>nd</sup> Avenue  
Doral, Florida 33122

(954) 788-3400 FAX (954) 788-3500

Florida Certificate of  
Authorization # - 7928

BID / CONTRACT NO. :

REVISIONS

NO.	DESCRIPTION	DATE
01	AM Per CRA board	08/08/17

**PRELIMINARY PLAN  
NOT FOR CONSTRUCTION**  
THESE PLANS ARE NOT FULLY PERMITTED  
AND ARE SUBJECT TO REVISIONS MADE  
DURING THE PERMITTING PROCESS.  
RESPONSIBILITY FOR THE USE OF THESE  
PLANS PRIOR TO OBTAINING PERMITS  
FROM ALL AGENCIES HAVING JURISDICTION  
OVER THE PROJECT WILL FALL SOLELY  
UPON THE USER.

## WINFIELD BOULEVARD IMPROVEMENTS CITY OF MARGATE

SCALE: AS NOTED

DATE ISSUED: FEBRUARY 10, 2017

DRAWN BY: MC

DESIGNED BY: MC

CHECKED BY: SW

STEPHEN D. WILLIAMS, P.E.  
FLORIDA REG. NO. 32090  
(FOR THE FIRM)

SHEET TITLE

**PAVEMENT  
MARKING  
AND SIGNING PLAN**

SHEET NUMBER

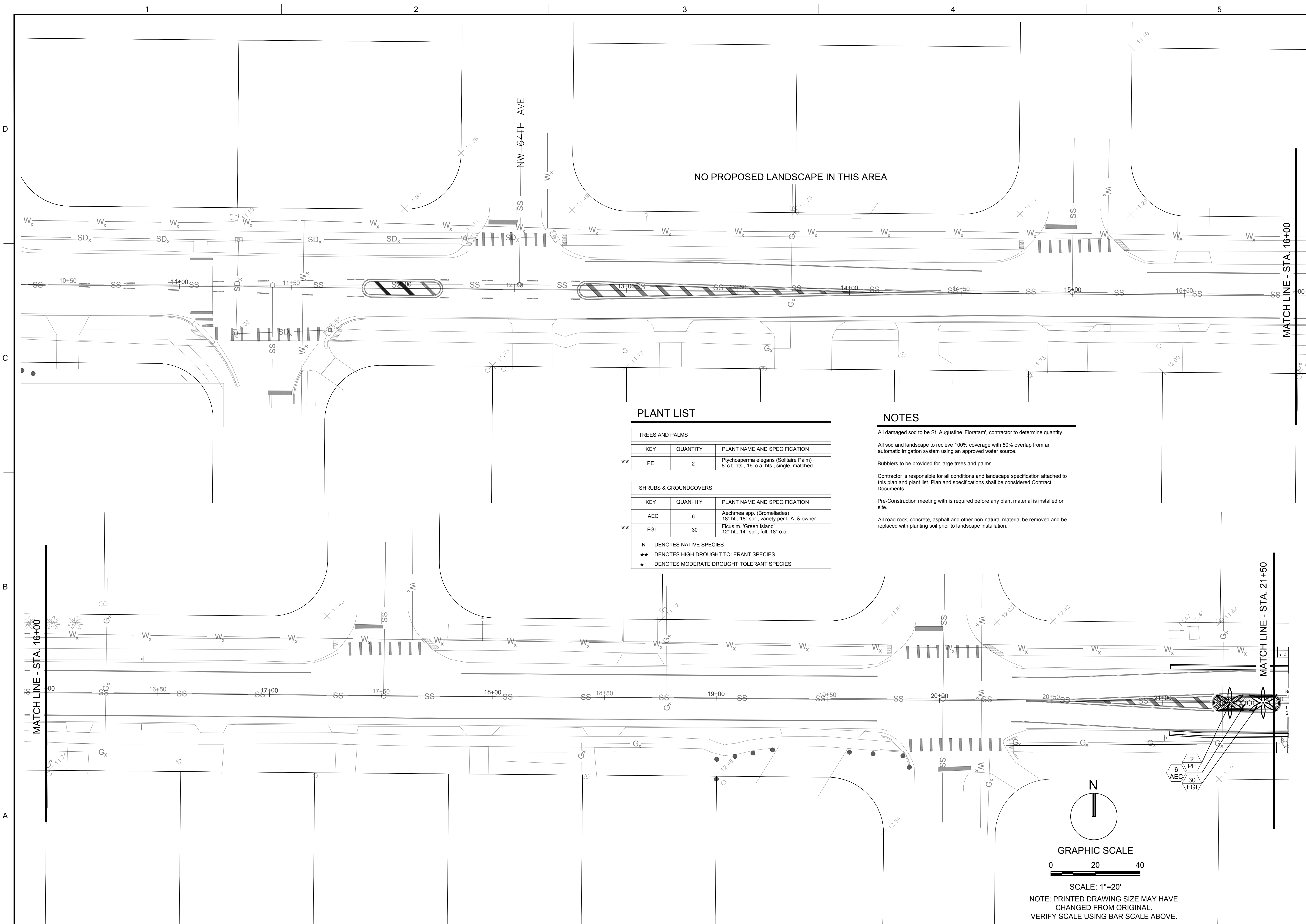
**CM-103**

SHEET of

PROJECT NO. 09359.01

Drawing name: N:\090359\01 Winfield Boulevard City of Margate\Engineering\090359-01-CM-101-PAVEMENT MARKING PLANS.dwg Layout Name: CM-103 Plotted by: smzrah Plotted on: Aug 15, 2017 - 3:15pm





PLANT LIST

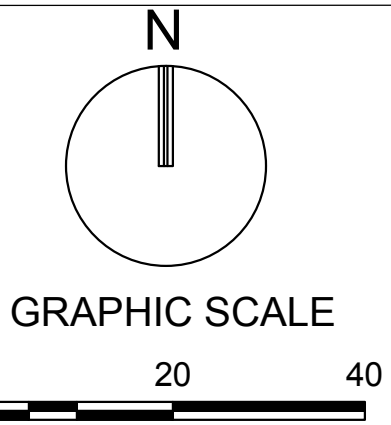
TREES AND PALMS		
KEY	QUANTITY	PLANT NAME AND SPECIFICATION
** PE	2	Ptychosperma elegans (Solitaire Palm) 8' c.t. hts., 16' o.a. hts., single, matched

SHRUBS & GROUNDCOVERS		
KEY	QUANTITY	PLANT NAME AND SPECIFICATION
AEC	6	Aechmea spp. (Bromeliades) 18" ht., 18" spr., variety per L.A. & owner
** FGI	30	Ficus m. 'Green Island' 12" ht., 14" spr., full, 18" o.c.

N DENOTES NATIVE SPECIES  
\*\* DENOTES HIGH DROUGHT TOLERANT SPECIES  
\* DENOTES MODERATE DROUGHT TOLERANT SPECIES

NOTES

- All damaged sod to be St. Augustine 'Floritam', contractor to determine quantity.
- All sod and landscape to relieve 100% coverage with 50% overlap from an automatic irrigation system using an approved water source.
- Bubblers to be provided for large trees and palms.
- Contractor is responsible for all conditions and landscape specification attached to this plan and plant list. Plan and specifications shall be considered Contract Documents.
- Pre-Construction meeting with is required before any plant material is installed on site.
- All road rock, concrete, asphalt and other non-natural material be removed and be replaced with planting soil prior to landscape installation.



NOTE: PRINTED DRAWING SIZE MAY HAVE CHANGED FROM ORIGINAL. VERIFY SCALE USING BAR SCALE ABOVE.

**KEITH & ASSOCIATES, INC.**  
consulting engineers

301 East Atlantic Boulevard  
Pompano Beach, Florida 33060-6643

2160 NW 82<sup>nd</sup> Avenue  
Doral, Florida 33122

(954) 788-3400 FAX (954) 788-3500

Florida Certificate of  
Authorization # - 7928

REVISIONS		
NO.	DESCRIPTION	DATE

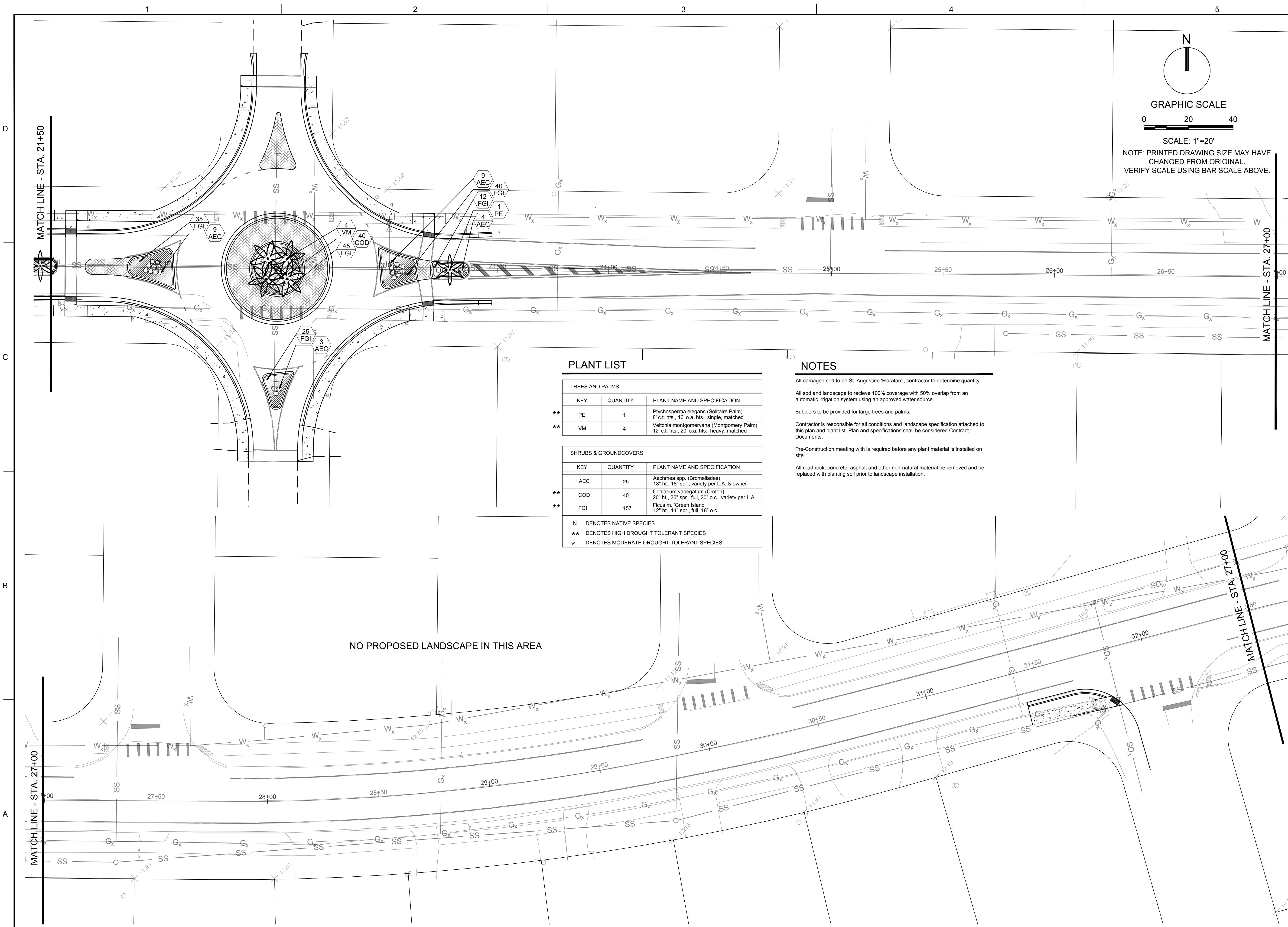
**PRELIMINARY PLAN  
NOT FOR CONSTRUCTION**  
THESE PLANS ARE NOT FULLY PERMITTED AND ARE SUBJECT TO REVISIONS MADE DURING THE PERMITTING PROCESS. RESPONSIBILITY FOR THE USE OF THESE PLANS PRIOR TO OBTAINING PERMITS FROM ALL AGENCIES HAVING JURISDICTION OVER THE PROJECT WILL FALL SOLELY UPON THE USER.

**WINFIELD  
BOULEVARD  
IMPROVEMENTS  
CITY OF  
MARGATE**

SCALE:	AS NOTED
DATE ISSUED:	FEBRUARY 10, 2017
DRAWN BY:	SR
DESIGNED BY:	MP
CHECKED BY:	MP

MICHAEL J. PHILLIPS, RLA  
FLORIDA REG. NO. LA0001540  
(FOR THE FIRM)

SHEET TITLE	
<b>LANDSCAPE PLAN</b>	
SHEET NUMBER	
<b>LP-101</b>	
SHEET	of
PROJECT NO. <b>09359.01</b>	



TREES AND PALMS		
KEY	QUANTITY	PLANT NAME AND SPECIFICATION
** PE	1	Ptychosperma elegans (Solitaire Palm) 8' c.t. hts., 16" o.a. hts., single, matched
** VM	4	Veitchia montgomeryana (Montgomery Palm) 12' c.t. hts., 20" o.a. hts., heavy, matched

SHRUBS & GROUNDCOVERS		
KEY	QUANTITY	PLANT NAME AND SPECIFICATION
** AEC	25	Aechmea spp. (Bromeliades) 18" ht., 18" spr., variety per L.A. & owner
** COD	40	Codiaeum variegatum (Croton) 20" ht., 20" spr., full, 20" o.c., variety per L.A.
** FGI	157	Ficus m. "Green Island" 12" ht., 14" spr., full, 18" o.c.

N DENOTES NATIVE SPECIES  
\*\* DENOTES HIGH DROUGHT TOLERANT SPECIES  
\* DENOTES MODERATE DROUGHT TOLERANT SPECIES

**NOTES**

All damaged sod to be St. Augustine 'Floritam', contractor to determine quantity.

All sod and landscape to receive 100% coverage with 50% overlap from an automatic irrigation system using an approved water source.

Bubblers to be provided for large trees and palms.

Contractor is responsible for all conditions and landscape specification attached to this plan and plant list. Plan and specifications shall be considered Contract Documents.

Pre-Construction meeting with is required before any plant material is installed on site.

All road rock, concrete, asphalt and other non-natural material be removed and be replaced with planting soil prior to landscape installation.

301 East Atlantic Boulevard  
Pompano Beach, Florida 33060-6643

2160 NW 82<sup>nd</sup> Avenue  
Doral, Florida 33122

(954) 788-3400 FAX (954) 788-3500

Florida Certificate of  
Authorization # - 7928

BID / CONTRACT NO. :

REVISIONS		
NO.	DESCRIPTION	DATE

**PRELIMINARY PLAN  
NOT FOR CONSTRUCTION**

THESE PLANS ARE NOT FULLY PERMITTED  
AND ARE SUBJECT TO REVISIONS MADE  
DURING THE PERMITTING PROCESS.  
RESPONSIBILITY FOR THE USE OF THESE  
PLANS PRIOR TO OBTAINING PERMITS  
FROM ALL AGENCIES HAVING JURISDICTION  
OVER THE PROJECT WILL FALL SOLELY  
UPON THE USER.

**WINFIELD  
BOULEVARD  
IMPROVEMENTS  
CITY OF  
MARGATE**

SCALE: AS NOTED  
DATE ISSUED: FEBRUARY 10, 2017  
DRAWN BY: SR  
DESIGNED BY: MP  
CHECKED BY: MP

MICHAEL J. PHILLIPS, RLA  
FLORIDA REG. NO. LA0001540  
(FOR THE FIRM)

**SHEET TITLE**

**LANDSCAPE  
PLAN**

**SHEET NUMBER**

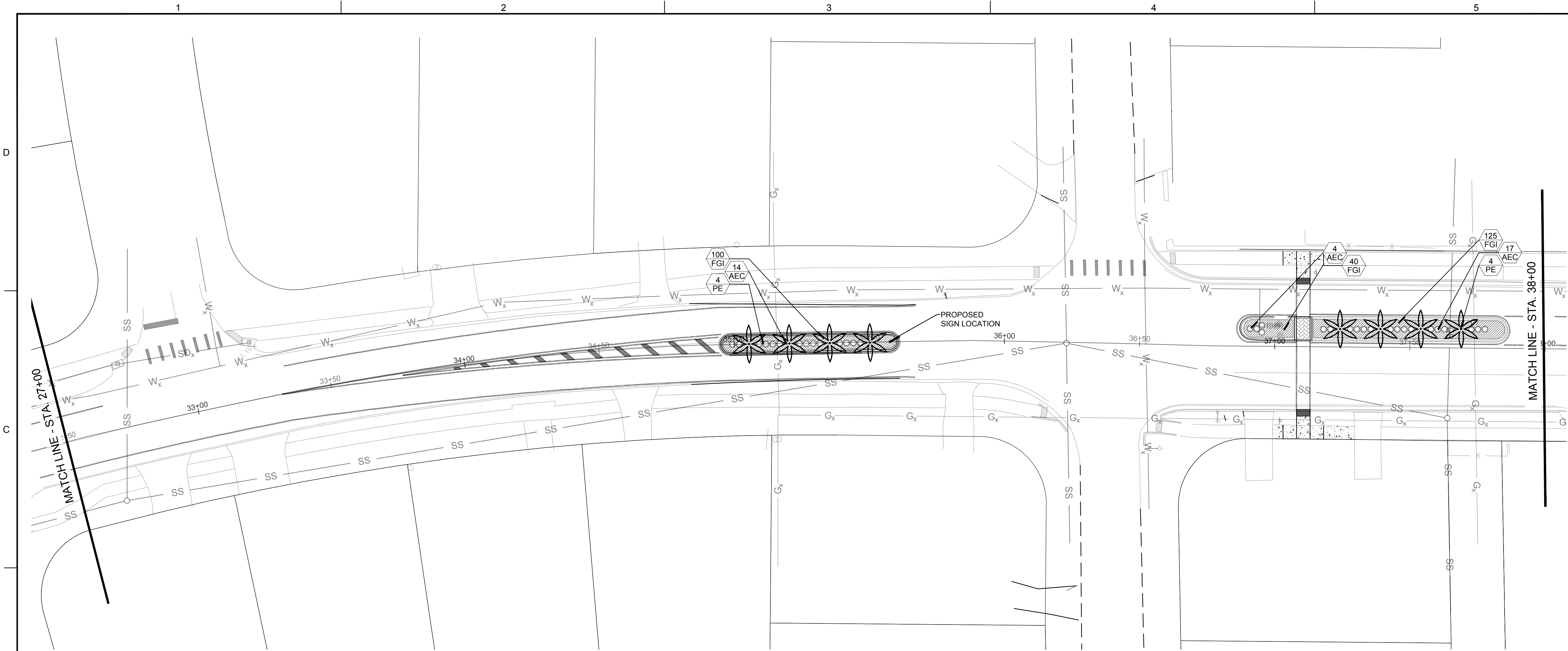
**LP-102**

SHEET of

PROJECT NO. 09359.01

Drawing name: N:\090359\01 Winfield Boulevard City of Margate\landscape\Architectural\090359.01-LP-101-LANDSCAPE PLANS.dwg Layout Name: LP-102 Plotted on: Aug 16, 2017 8:46am





PLANT LIST

TREES AND PALMS		
KEY	QUANTITY	PLANT NAME AND SPECIFICATION
** PE	8	Ptychosperma elegans (Solitaire Palm) 8' c.t. hts., 16' o.a. hts., single, matched
** VM	4	Veitchia montgomeryana (Montgomery Palm) 12' c.t. hts., 20' o.a. hts., heavy, matched

SHRUBS & GROUNDCOVERS		
KEY	QUANTITY	PLANT NAME AND SPECIFICATION
AEC	53	Aechmea spp. (Bromeliades) 18" ht., 18" spr., variety per L.A. & owner
** FGI	415	Ficus m. 'Green Island' 12" ht., 14" spr., full, 18" o.c.
N DENOTES NATIVE SPECIES		
** DENOTES HIGH DROUGHT TOLERANT SPECIES		
* DENOTES MODERATE DROUGHT TOLERANT SPECIES		

NOTES

All damaged sod to be St. Augustine 'Floritam', contractor to determine quantity.

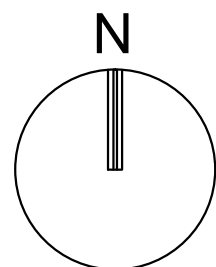
All sod and landscape to receive 100% coverage with 50% overlap from an automatic irrigation system using an approved water source.

Bubblers to be provided for large trees and palms.

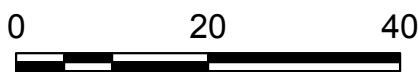
Contractor is responsible for all conditions and landscape specification attached to this plan and plant list. Plan and specifications shall be considered Contract Documents.

Pre-Construction meeting with is required before any plant material is installed on site.

All road rock, concrete, asphalt and other non-natural material be removed and be replaced with planting soil prior to landscape installation.

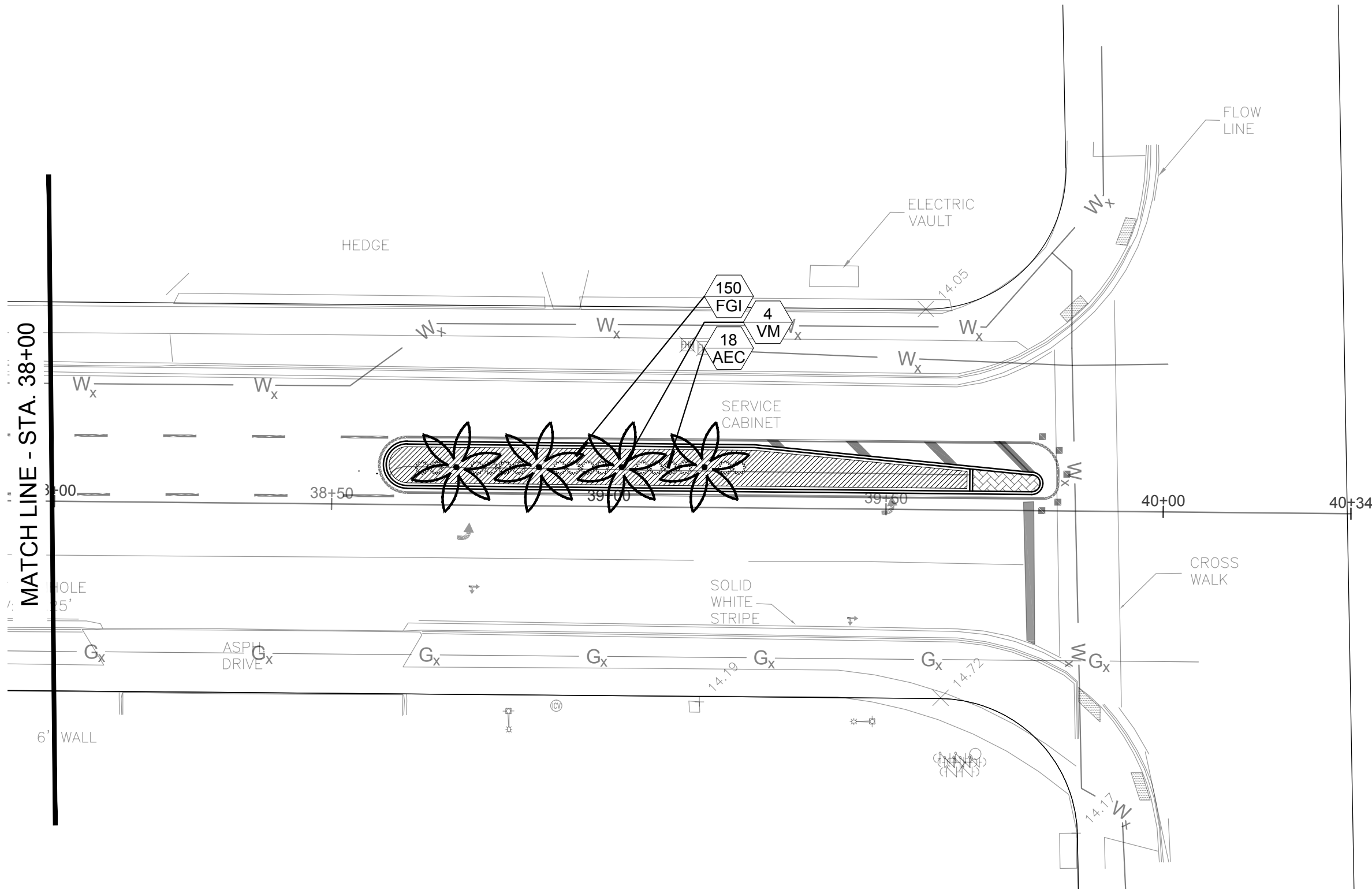


GRAPHIC SCALE



SCALE: 1"=20'

NOTE: PRINTED DRAWING SIZE MAY HAVE  
CHANGED FROM ORIGINAL.  
VERIFY SCALE USING BAR SCALE ABOVE.



**KEITH**  
ASSOCIATES, INC.  
consulting engineers

301 East Atlantic Boulevard  
Pompano Beach, Florida 33060-6643

2160 NW 82<sup>nd</sup> Avenue  
Doral, Florida 33122

(954) 788-3400 FAX (954) 788-3500

Florida Certificate of  
Authorization # - 7928

BID / CONTRACT NO. :

REVISIONS

NO.	DESCRIPTION	DATE

**PRELIMINARY PLAN  
NOT FOR CONSTRUCTION**  
THESE PLANS ARE NOT FULLY PERMITTED  
AND ARE SUBJECT TO REVISIONS MADE  
DURING THE PERMITTING PROCESS.  
RESPONSIBILITY FOR THE USE OF THESE  
PLANS PRIOR TO OBTAINING PERMITS  
FROM ALL AGENCIES HAVING JURISDICTION  
OVER THE PROJECT WILL FALL SOLELY  
UPON THE USER.

**WINFIELD  
BOULEVARD  
IMPROVEMENTS  
CITY OF  
MARGATE**

SCALE: AS NOTED  
DATE ISSUED: FEBRUARY 10, 2017  
DRAWN BY: SR  
DESIGNED BY: MP  
CHECKED BY: MP

MICHAEL J. PHILLIPS, RLA  
FLORIDA REG. NO. LA0001540  
(FOR THE FIRM)

SHEET TITLE

**LANDSCAPE  
PLAN**

SHEET NUMBER

**LP-103**

SHEET of

PROJECT NO. 09359.01

Drawing name: N:\090359\01 Winfield Boulevard - City of Margate\landscape Architecture\Cadd\090359.01-LP-103-LANDSCAPE PLANS.dwg Layout Name: LP-103 Plotted on: Aug 16, 2017 9:58am





	1	2	3	4	5
A.					minors" or similar approved slow-release tablets applied per manufacturer suggested application rate chart:
					<b>Agriform® 21-gm Tablets</b> (SKU# 90026"; 500 tablets/case)
					<b>NEW Tree / Shrub Container Size</b>
					<b>1 Gal 2 Gal 3 Gal 5 Gal 7 Gal 15 Gal 24" Box</b>
					Installation: 1 1 to 2 2 to 3 2 to 3 3 to 5 7 to 10 15 to 24
					• Place plant in the hole and backfill to halfway point.
					• Do not place tablets in the bottom of the planting hole.
					• Place Agriform Tablets in the hole about 1 to 2 inches away from root tips.
					• Finish filling the hole around the plant to grade level.
					SCOTTS: 1-800-492-8255 or visit <a href="http://www.scottsspro.com">www.scottsspro.com</a>
B.					<b>Q. SOD</b>
					1. All areas disturbed during construction shall be sodded with St. Augustine 'Seville' unless otherwise noted.
					2. These disturbed areas shall have proper irrigation established or re-established if they were disrupted or non-functional.
					Landscape Contractor to supply and install 2" soil layer 50/50 mix blanket for all new sod areas.
					2. All open areas not covered by trees, palms, shrubs, vines, ground covers or existing sod in good condition to remain, shall receive Stenotaphrum Secundatum, St. Augustine 'Seville' sod, whether labeled on the plans or not, unless a different species is indicated on the planting plan. Sod shall be strongly rooted, free from weed fungus, insects and disease. Contractor shall be paid by the total sodded area x the unit price submitted (field verified).
					3. Sod shall be machine stripped no more than 24 hours prior to laying.
					4. Lay sod strips with tight joints, do not overlap, stagger strips to offset joints in adjacent courses. Work sited soil mix into minor cracks between pieces of sod and remove excess soil deposits from sodded areas. Sod on slopes greater than 3:1 shall be immediately staked after planting.
					<b>R. INSPECTION &amp; ACCEPTANCE</b>
					1. Notify the governing Agency if required and Landscape Architect of commencement.
					2. Onsite plant deliveries shall occur on Monday through Friday only unless otherwise directed by the Landscape Architect / Owner. The contractor shall ensure that plant material is delivered undamaged from transportation or digging operations. The Landscape Architect may reject material that has been damaged or rendered unacceptable due to relocation or transportation from the point of origin. All plant material shall be available for inspection and approval by the Landscape Architect prior to final installation.
C.					3. There shall be one final inspection for approval by each of the presiding governing agency, Landscape Architect and owner. Contractor shall ensure that the plans, details, specifications and notes have been adhered to and that the landscape and irrigation installation is compliant to all items as directed on the plans prior to scheduling of the final inspection.
					4. Upon completion of the work, the Landscape Contractor shall notify the Landscape Architect and request a final inspection. Any items that are judged incomplete or unacceptable by the Landscape Architect or owner shall be promptly corrected by the Landscape Contractor.
					5. No substitution of plant material, type or sizes will be permitted without prior written authorization from the Landscape Architect and owner.
					6. To obtain final payment, Contractor must provide release of all mechanic's liens and material liens.
					<b>S. MULCH</b>
					1. All planting beds shall be mulched to a depth of 3" with an organic mulch approved by Landscape Architect. No heavy metals, such as arsenic, etc. are to be contained in the mulch. The contractor shall provide certification if requested or proof that all mulch is free of heavy metals or similar environmental contaminants.
					2. Shredded approved organic mulch to be used beyond trunk in all directions and throughout all hedges and plant material.
					3. All trees in sodded areas shall have a clean cut 4" diameter mulch ring.
					4. Preferred mulch is shredded malealeuca, Cypress, red, gold and green mulch is prohibited.
					5. All mulch shall have a minimum 3" separation from the trunk of the tree/palm trunk to avoid rotting.
D.					<b>T. WATERING</b>
					1. All plant material shall be watered in thoroughly at the time of planting.
					2. It is the sole responsibility of the Landscape Contractor to ensure that all new plantings receive adequate water during the installation and until completion of contract. Deep watering of all new trees and palms and any supplemental watering that may be required to augment natural rainfall and site irrigation is mandatory to ensure proper plant establishment and development and shall be provided by Contractor as a part of this contract.
					<b>U. CLEAN UP</b>
					1. The Landscape Contractor is responsible for maintaining all landscape planting areas until final acceptance of the owner.
					2. The contractor is responsible for mowing the entire project during planting and establishment periods, based on mowing project once a month from October to April, and twice a month from April to October (During installation and plant establishment only and until final inspection and owner accepts and takes ownership).
					3. Any excess soil, undesired stones or debris resulting from landscape operations shall be removed promptly, keeping the site clean as work progresses.
					4. The Landscape Contractor shall be responsible for all items keep the premises free from accumulation of waste material or debris caused by their crews during the performance of the work. Upon completion of the work, the contractor shall promptly remove all waste materials, debris, unused plant material, empty plant containers, and all equipment from the project site.
					<b>V. MAINTENANCE</b>
					1. Landscape Contractor to return to job site 12 months after tree bracing and remove all tree braces. Owner may choose to retain 5% of payment to ensure compliance.
E.					2. The Landscape Contractor shall water, mulch, weed, prune, and otherwise maintain all plants, including sod, until completion of contract or acceptance by landscape architect. Settled plants shall be reset to proper grade, planting saucers restored, and defective work corrected.
					3. Trees and shrubs shall be maintained to keep clearance of stop signs and safety clearance for visibility at traffic intersection.
					<b>W. GUARANTEE &amp; REPLACEMENT</b>
					1. By accepting the contract, the Contractor is thereby guaranteeing all plant materials and design for a period of not less than one (1) year from the time of final acceptance by the owner. Contractor shall replace any plants which die or wither within such period with healthy plants that meet specifications of the same species and size without additional cost to the owner unless such death or withering is due to Owner's failure to do ordinary maintenance on such plants after final acceptance in accordance with any maintenance instructions given by Landscape Architect for such plants. Such replacement shall include all plants and labor to plant the replacement plants. Any plant materials damaged by lightning, storms, freeze damage or other "acts of God" as well as plants damaged by vehicles, vandalism or neglect are not included in this replacement agreement. If requested, the Landscape Architect may act as a mediator between owner and Landscape Contractor on a time material basis. "Plants" includes all trees, palms, shrubs, grass and other plants provided or planted by Contractor.
					<b>X. MISCELLANEOUS.</b>
					1. All work to be done in a professional manner.
					2. No change order shall be valid, due or payable unless it is approved by Owner in writing in advance.
					3. These notes shall be an integral part of the contract of Contractor and shall be deemed incorporated therein by reference. In the event of a conflict among the terms among the plans and these notes, the terms of this document shall control.
					<b>Y. ABBREVIATIONS IN NOTES AND PLANS</b>
	F.				
				<b>EXISTING TREES</b>	
				1. Existing trees designated to remain shall be protected during all construction phases. Any trees or shrubs scarred or destroyed designated to remain will be replaced at the contractor's expense, with same species, size and quality.	
				2. Existing plant material not shown on the plan and in conflict with new planting shall be evaluated at the time of new planting installation by the Landscape Architect. Trees and plant material indicated to be relocated with no new location provided in plans shall be moved to a location on site designated as a nursery holding area with the root ball protected from direct sunlight, maintained and irrigated until new location is determined.	
				3. Prune trees to remove damaged branches and improve natural shape and thin out structure. Do not remove more than 15% of branches. Do not prune back terminal leader.	
				4. Prune existing shrubs to remove damaged branches and improve natural shape.	
				5. Existing trees to remain shall be trimmed per ANSI-A300 standards. Supervision of the trimming shall be performed by an ISA Certified Arborist to ensure quality work.	
				6. All existing trees shall be "lifted and thinned" to provide an 8' minimum clearance for sidewalks and pedestrian walkways and a 14' minimum clearance for roadways, driveways and all vehicular use areas.	
				7. Selective canopy and root pruning of existing trees can be conducted (only as necessary and in no event more than 35%) to accommodate for new approved construction. Pruning shall be conducted / supervised by an ISA Arborist.	
				8. If plans call for relocation of trees, palms or plants. High level of care should be exercised to assure that they are not damaged in the process and that they are promptly replanted upon being dug up.	
G.					9. All existing trees, shrubs, palms and plants shall be protected by the tree protection zone. If lines must traverse the protection area, they shall be tunneled or bored under the tree.
					10. Erosion control devices such as silt fencing, debris basins, and water diversion structures shall be installed to prevent siltation and/or erosion within the tree protection zone.
					11. Roots shall be cut manually by digging a trench and cutting exposed roots with a saw, vibrating knife, rock saw, narrow trencher with sharp blades, or other approved root pruning equipment.
					<b>TREE RELOCATION</b> (These notes for relocation trees only and if applicable)
					1. Flag all trees and palms to be transplanted with differentiating color than those to be saved or removed.
					2. Tree Relocation process must be performed or supervised by ISA Certified Arborist.
					3. Water the root zones to field capacity for 5 continuous days before root pruning. At a minimum soak the soil to a 4'-0" depth within a 6' radius.
					4. Root prune a minimum of six weeks before relocation. Prune away all dead or damaged limbs or fronds. For trees, prune out 1/3 of the existing canopy by selectively trimming small internal branches. For palms, gather fronds above the bud and tie them loosely with lime twine to avoid damage.
					5. Root prune 1/3 of the root system, irrigate daily for 2 weeks then root prune another 1/3 rd, irrigate daily and prune last 1/3 rd on actual relocation date, no less than two weeks (six weeks total minimum root pruning by stages). ISA Arborist on staff shall observe for intense shock. Canopy pruning may be deemed necessary by Arborist on staff to balance for intense root ball loss, canopy shall be trimmed only as necessary to increase survival.
					6. Root prune with proper clean equipment to sever roots. Ensure roots are not torn or pulled apart.
H.					7. With hand tools, dig a 2'-0" wide by 3'-0" deep trench at a minimum distance as determined by the consulting arborist to expose roots. Cut all roots 1.5" and larger in diameter with a clean, sharp pruning saw. Treat all cuts with a fungicidal barrier. Backfill the trench, within 4 hours of digging, with a 1:1 mixture of site soil and sawdust or other fine organic material. Do not compact.
					8. Form a rootball size in compliance with Florida grades and Florida standards number 1 or better.
					9. Maintain the soil moisture at field capacity throughout the six weeks.
					10. Allow the plant to regenerate roots over a period of six weeks.
					11. At the end of six weeks, prepare the planting pit at the new location. Overdig the hole diameter by 2' beyond the root ball at a minimum, but it is recommended that transplanting hole to be at least 1/3 larger than the area that was trenched for transplanting.
					12. With the consulting arborist present, undercut the entire root ball of the plants to be transplanted at a depth specified by the arborist. The undercutting method may be a choker cable drawn through the root ball with heavy equipment.
					13. At the direction of a professional rigger, assemble slings, padding, guiding ropes and cables for attachment to the crane or backhoe. The professional rigger shall determine the size of machinery necessary to execute the lifting and moving operation.
					14. Install trees within 24 hours of removal from their original location to locations provided by Landscape Architect or Developer with approval of City / Landscape Inspector.
					15. Experienced Tree Spade operator shall move tree or experimented tree mover shall choose best means and methods to strap and rig tree for transporting safely without damage to new location.
					16. Maintain trees in a healthy and vigorous condition during installation and throughout the plant establishment period. Replace trees that do not meet this requirement with the same species, size, and quality or per mitigation requirements specific to the city with jurisdiction.
I.					17. Fertilize the plant as directed by the consulting arborist.
					18. When the plant is placed in the new location, backfill the planting pit with topsoil and water thoroughly to eliminate air pockets and compact the soil. Set the tree no deeper than its original condition.
					19. Cover the root ball area with 3" depth of organic mulch.
					20. Provide fungicide and fertility applications at the direction of the consulting arborist.
					21. Post transplant watering to provide moisture and reduce any excessive stress due to root desiccation. Watering to be adjusted according to conditions and at the supervision and direction of the ISA certified arborist.
					22. The diameter of the root-pruning or transplanting circle shall be at a distance away from the trunk equal to 12 times each inch of trunk diameter at breast height.
					23. For all palms except Sabal palmetto, the lower fronds shall be pruned leaving 9-11 fronds that can be tied without an extensive amount of weight that may damage the heart of the palm. The Sabal palmetto shall have all fronds cut without damaging the bud.
					24. Transplanting must occur within 24 hours after being dug for relocation. Trees/palms should be kept in shade and the canopy kept moist.
					25. Digging and preparation of the new hole for the transplant shall be done prior to removing the tree from the existing location.
					26. The landscape Contractor is to verify that all new holes have appropriate percolation.
J.					27. Padding the sling may be necessary so that the trunk or "boots" are not damaged.
					28. A 6" saucer shall be created around the edge of the plant pit to help hold water, see planting detail for additional information.
					29. Over the guarantee period the Landscape contractor shall be responsible for resetting any trees/palms that are not vertical when caused by winds less than 74 mph.
					30. After transplanting trees and palms, the landscape contractor shall be responsible for obtaining water and watering to maintain soil moisture during the guarantee period at a minimum of: First month - daily, Second month - three times per week, Third and Fourth months - two times per week, Last eight months - one time per week.
					31. For trees over 4" in caliper at the time of planting, the schedule should be: First six weeks, daily, one and a half months to six months - three times per week, last six months - one time per week.
					<b>SITE PREPARATION &amp; GRADING</b>
					1. Landscape contractor shall loosen and till compacted soils that are overly compacted in all planting areas of the project to provide for proper soil aeration for plant establishment.
					2. Planted areas shall be cleared of underground rocks, construction debris and other materials detrimental to the health of the plants. Lime rock base material shall be removed within planting pits and adjacent to pavement. The planting areas should be clean to a depth equal to the root ball of the trees/palms proposed for the area. Planting area soils shall be tested for pH before planting. Soils showing high (alkaline) pH (over 7.5) shall be amended or replaced with native soil having a pH range of 6.5 - 7.5, as approved by Landscape Architect.
					3. All planting areas and planting pits shall be tested for sufficient percolation prior to final planting and irrigation installation to ensure proper drainage. Plant beds in parking lots and in areas compacted by heavy equipment shall be de-compacted so that drainage is not impeded.
					4. Landscape Contractor shall treat plant areas with pre-emergence herbicide after weeds and grass have been removed. Landscape Contractor shall wait (7) seven days after pre-emergence treatment prior to planting.
K.					5. Site preparation shall include the eradication and removal of any weeds, clean-up of any dead material, debris, and rubbish.
					6. General site and berm grading to +/- 1 inch (1") shall be provided by the general contractor. All finished site grading shall be provided by the Landscape Contractor. All planting beds shall be free of all rocks 1/2" or larger, sticks, and objectionable material including weeds and weed seeds. All lime rock shall be removed/cleaned down to the native soils.
					7. The Landscape contractor shall ensure the planting areas are at finish grade prior to installing plant materials.
					8. All trees and plant material to remain shall be protected during construction. Contractor shall install protective barriers such as "Tenax" orange safety fencing or similar, to be installed before the beginning of the project. Barriers shall be located to include the drip line of the trees, palms and plant material. The contractor shall take extra caution to prevent any damage to the trunk, root zones and grade.
					9. Final grade within planting areas to be 4" below adjacent paved areas or top of curb. Sod areas to be 2" below.
					10. All planting beds shall be shaped and sloped to provide proper drainage away from building and structures and to swales, if applicable.
					<b>IRRIGATION</b>
					1. Any Irrigation Notes and specifications included in Irrigation Sheets govern over the following Irrigation Notes.
					2. The Landscape Contractor shall coordinate with the irrigation contractor if not the same and leave provisions for all individual trees in turf areas and all planting beds.
					3. Irrigation / Landscape contractor to guarantee 100% coverage and 50% overlap (head to head coverage) to all landscaped areas and furnish and install a rain sensor.
L.					4. Irrigation Contractor to adapt design to onsite conditions adjusting heads and changing nozzles as required to avoid overspray onto buildings or paved areas.
					5. The contractor shall ensure that the irrigation system is operational and free of leaks prior to any planting being finalized. Plant material that is installed prior to the irrigation system being operational shall be watered by the contractor at his or her expense. Water for plant establishment should be included in the cost of the plant.
					6. All guidelines as outlined by the South Florida Water Management District (SFVMD) or water management district with jurisdiction shall be strictly adhered to.
					7. Any existing irrigation system shall be retrofitted to comply with the specifications as outlined above.
					<b>HARDSCAPE &amp; OTHER MATERIALS</b>
					1. Face of trees and palms to be located a minimum of 2' setback from all fences, walkways, walls, and paved surfaces, unless otherwise indicated on the plans. Refer to details.
					<b>FERTILIZATION</b>
					1. All Fertilization shall comply with state fertilization laws. Fertilization shall be Agriform "20-10-5 Plus
					<b>UTILITIES / CLEARANCES</b>
					1. The contractor shall be responsible for determining the location of and avoid and protect utility lines, buried cables, and other utilities. The owner or Landscape Architect shall not be responsible for damage to utility or irrigation lines.
M.					2. Trees shall be placed a minimum of 5 ft. from underground utilities, unless otherwise approved in writing by Landscape Architect and Owner.
					3. All canopy trees to be planted min. of 15' from light source/poles. Unless otherwise approved by the City / Landscape Architect and Owner.
					4. Landscape contractor shall contact the county, city and/or utility companies to locate all underground utilities or structures prior to digging. Landscape contractor shall repair all damage to underground utilities, and/or construction caused by utility damage, at no cost to the owner.
					5. All plant material symbols shown on landscape plan shall be considered diagrammatic and should be adjusted in the field by contractor to avoid all utilities, and all other obstructions.
					6. If / When digging in right of way needed: Two (2) full business days before digging, call toll free 1-800-432-4770, or 811, Sunshine State One Call of Florida, Inc. Notification Center. In addition, call the City's Utilities/Public Works Department. Contractors are responsible for coordinating with the owners and appropriate public agencies to assist in locating and verifying all underground utilities prior to excavation. All existing utilities shown on the plans are to be considered approximate and should be verified by the contractor prior to the start of work operations.
					7. Above and below ground utilities shall be verified and located in the field by the contractor prior to commencing work in the project area. The contractor shall examine available utility plans and confirm conflicts between indicated or located utilities and landscape work. The contractor shall then notify the Project Engineer of said conflicts and the Engineer will coordinate any necessary adjustments with the utility provider. Tree locations will be adjusted as necessary when in conflict with existing utilities.
					8. The final plant locations may be adjusted, as approved / directed by the Landscape Architect in writing, to accommodate utilities compliance. Excavations within 5' of known utilities should be done by hand.
					9. Contractor shall familiarize himself with the location of and avoid and protect utility lines, buried cables, and all other utilities, noted or not, on plans.
					10. Leave clearance and access to all above ground and at grade meters and equipment.
					11. Landscape planting shall be in conformance with FPL guidelines for setbacks from overhead utility lines.
N.					12. Landscaping shall not interfere with light poles, fire hydrants, electrical/mechanical equipment access, signs, drainage structures, etc. Bring to the attention of Landscape Architect any conflicts.
					<b>ROOT BARRIERS</b>
					1. Root barriers will be installed to protect building foundations, curbing, walkways, paved areas, roadway base material and utilities from existing large trees or proposed new trees that are within 5' of existing or new approved construction or as may be deemed necessary as job progresses.
					2. Mechanical Root barriers will be used for large existing Canopy Trees and chemical type barriers will be used for new trees.
					3. Mechanical Root barriers will be "DeepRoot" and Chemical Root barriers will be "Biobarrier". Substitutions must be of approved equal or better quality.
					4. Root barriers will be installed per manufacturer specifications.
					5. Root barrier depth will be determined by manufacturer recommended depth chart ( <a href="http://www.geo-synthetics.com/pdf/BioBarrier/BioBarrierApplicationManual.pdf">http://www.geo-synthetics.com/pdf/BioBarrier/BioBarrierApplicationManual.pdf</a> ) and as required by on-site conditions in a case by case basis as deemed necessary by Landscape Architect Architect / ISA Arborist and City Landscape Inspector.
					<b>LANDSCAPE BACKFILL &amp; SOIL AMENDMENT</b>
					1. All building construction material and foreign material shall be removed from the planting areas and replaced with 70/30 mix of organic planting soil and/or amend the existing soils per section H.2.
					2. Planting soil mix shall be delivered to the site in a clean loose and friable condition and is required around the root ball of all trees and shrubs, the top 6" of all shrubs and ground cover beds and top 2" of all grassed areas. This soil shall be tilled into the existing soil after the existing soil has been cleaned of all undesirable foreign materials. Recycled compost is encouraged as a soil amendment alternative. Planting soil to be weed free.
				3. Planting backfill for palms shall be clean coarse native sand unless specified elsewhere.	
				4. Do not allow air pockets to form when backfilling. All trees shall be watered-in utilizing water probe or a tree bar.	
O.					<b>PLANT SIZE &amp; QUALITY</b>
					1. All plant material must meet or exceed the minimum size requirements as specified on the plant list. Height specification governs over container size if both specifications given cannot be met. Any other requirements for specific shape or effect as noted on the plan shall also be required for acceptance.
					2. Material specified as Balled and Burlapped (B&B) can be accepted in container if not available as B&B at the discretion of Landscape Architect; if not root banded and/or circling roots removed and root ball is proportionate to Tree / Palm.
					3. U.O.N, All trees designated as single trunk shall have a single, relatively straight, dominant leader, proper structural branching and even branch distribution. Trunks on palms shall be uniform in thickness for the entire length of the palm and shall not taper off to disproportionate thinness towards the crown. Trees with bark inclusion, tipped branches, and co-dominant trunks will not be accepted. Trees with girdling, circling and/or plunging roots will be rejected.
					4. Use nursery grown plant materials that complies with all required inspection, grading standards, and plant regulations in accordance with the latest edition of Florida Department of Agriculture, "Grade & Standards for Nursery Plants".
					5. All trees and palms shall be free of open wounds and unsightly visible scars.
					6. All substitutions must be approved by the City if it is required Canopy and by Landscape Architect / Owner if supplementary accent material.
					7. Contractor shall comply with Federal, State, and Local laws and regulations pertaining to the inspection for plant disease and insect infestation.
					8. Trees, palms, shrubs, ground covers:
					Plant species and sizes shall conform to those indicated on the drawings. All nursery stock shall be in accordance with grades and standards for nursery plants parts 1 and 2, latest edition published by the Florida Department of Agriculture and Consumer Services, unless specified otherwise. All plants shall be Florida grade number 1 or better as determined by the Florida Division of Plant Industry and tightly knit plant, so trained or favored in its development that first appearance is unquestionable and it is outstandingly superior in form, number of branches, compactness and symmetry. All plants shall be freshly dug, sound, healthy, vigorous, well branched and free of disease and insect eggs and larvae and shall have adequate root systems. Trees and palms shall be uniform in size and shape. All materials shall be subject to approval by the Landscape architect. Plants shall be pruned prior to delivery only upon the approval of the Landscape Architect.
P.					9. All containers grown material shall be healthy, vigorous, well-rooted plants and established in the container in which they are sold. The plants shall have tops of good quality and be in a healthy growing condition. An established container grown plant shall be transplanted into a container and grown in that container sufficiently long enough for the new fibrous roots to have developed so that the root mass will retain its shape and hold together when removed from the container.
					10. Field grown trees and palms previously root pruned shall obtain a root ball with sufficient roots for continued growth without resulting shock.
					11. Root suckers on any tree are not acceptable and must be properly pruned.
					12. Contractor shall coordinate with Landscape Architect and Owner to obtain prior approval for the selection of the specific specimens of all palms and any trees of more than six feet in height. Contractor to supply photograph of trees prior to purchase and installation.
					<b>PLANTING NOTES</b>
					1. At the discretion of the Landscape Architect, plants are subject to review for approval for size, variety, condition and appropriateness to the design intent.
					2. All synthetic burlap, synthetic string or cords, or wire baskets shall be removed before any trees are planted. All synthetic tape (i.e. tagging tape, nursery tape) shall be removed from trunks, branches, etc. before inspection. The top 1/3 of any natural burlap shall be removed or tucked into the planting hole before the trees are back filled.
					3. All "groundcover" requires 75% coverage and 100% within 3 months of installation. Bring to the attention of Landscape Architect in writing before commencing if this is not achievable with the design.
					4. Set tree no deeper than it was in its original growing condition with the top of the root ball even with, or slightly higher (+/- 1") than the finished grade.
					5. All trees/palms shall be planted so the top of the root ball, root flair are slightly above final grade. Shrub material shall be planted such that the top of the plant ball is flush with the surrounding grade.
				6. All trees and palms shall be banded / staked per accepted standards by the Florida Nursery, Growers & Landscape Association (FNGLA). Nailing into trees and palms for any reason is prohibited and the material will be rejected. Please refer to the planting details.	
				7. All trees, new or relocated, to be staked and guyed as detailed.	
				8. Layout shrubs to create a continuous smooth front line and fill in behind.	
				9. Excavate pit or trench to 1-1 1/2 times the diameter of the balls or containers or 1' wider than the spread of roots and 3" deeper than required for positioning at proper height. Compact a layer of topsoil in bottom before placing plants. Backfill around plants with planting mixture, compacted to eliminate voids and air pockets. Form grade slightly dishd and bermed at edges of excavation. Apply 3" of mulch.	
				10. Groundcover and shrubs to be spaced in a uniform and consistent pattern per planting details.	
				11. All mechanical equipment, irrigation pumps, FPL transformers, pool pumps, etc. shall be screened on a minimum of three sides by landscape shrubs.	
				12. Contractor shall not mark or scar trunks in any fashion.	
				13. When requested by Landscape Architect, demonstration of healthy root system if not previously approved, can include tree removal and re-installation for inspection at no additional cost to the owner.	
				14. Remove rejected Plant material from the Site immediately and replace with acceptable plants.	



Florida Certificate of  
Authorization # - 7928

PROJECT NO. 09359.01

SYMBOL	DESCRIPTION
	HUNTER PGP 6" POP-UP ROTOR HEADS
	HUNTER SPRAY NOZZLES: 15" RADIUS, WITH PRS40 BODY
	HUNTER SPRAY NOZZLES: 12" RADIUS, WITH PRS40 BODY
	HUNTER SPRAY NOZZLES: 10" RADIUS, WITH PRS40 BODY
	HUNTER SPRAY NOZZLES: 8" RADIUS WITH, WITH PRS40 BODY
	HUNTER END SPRAY: ES515, WITH PRS40 BODY
	HUNTER SIDE SPRAY: SS515, WITH PRS40 BODY
	HUNTER MULTI-STREAM BUBBLERS: MSBN SERIES
	HUNTER BUBBLERS: PCN SERIES
	ZONE VALVE: ELECTRONIC, EQUAL TO IRRITROL, SIZE PER PLAN, IN AMETEK OR CARSON 12"X18" VALVE BOX
	AMES BRASS GATE VALVE, SAME SIZE AS MAINLINE, IN 6" SCH 40 PVC COLLAR EXTENSION AND VALVE BOX
	HUNTER MODULAR IRRIGATION CONTROLLER EQUAL TO PRO-C. SERIES WITH SOLAR SYNC, TO BE LOCATED PER OWNER'S PREFERENCE
	SLEEVES: SCH 40 PVC OR RATED EQUAL CLASS SLEEVES TO BE MIN. 24" AND MAX. 36" DEEP
	MAIN LINE: SCH 40 PVC WITH SCH 80 PVS FITTINGS THRUST BLOCKS AT STRESS POINTS, SITE PER PLAN
	LATERAL PIPING: PVC CLASS 200 PVC FITTINGS AND GLUE JOINTS, PER SPECIFICATIONS





Florida Certificate of  
Authorization # - 7928

[illegible]

**PRELIMINARY PLAN**  
**NOT FOR CONSTRUCTION**

THESE PLANS ARE NOT FULLY PERMITTED  
AND ARE SUBJECT TO REVISIONS MADE  
DURING THE PERMITTING PROCESS.  
RESPONSIBILITY FOR THE USE OF THESE  
PLANS PRIOR TO OBTAINING PERMITS  
FROM ALL AGENCIES HAVING JURISDICTION  
OVER THE PROJECT WILL FALL SOLELY  
UPON THE USER.

WINFIELD  
BOULEVARD  
IMPROVEMENTS  
CITY OF  
MARGATE

SCALE:	AS NOTED
DATE ISSUED:	FEBRUARY10, 2017
DRAWN BY:	SR
DESIGNED BY:	MP
CHECKED BY:	MP

MICHAEL J. PHILLIPS, RLA  
FLORIDA REG. NO. LA0001540  
(FOR THE FIRM)

SHEET TITLE

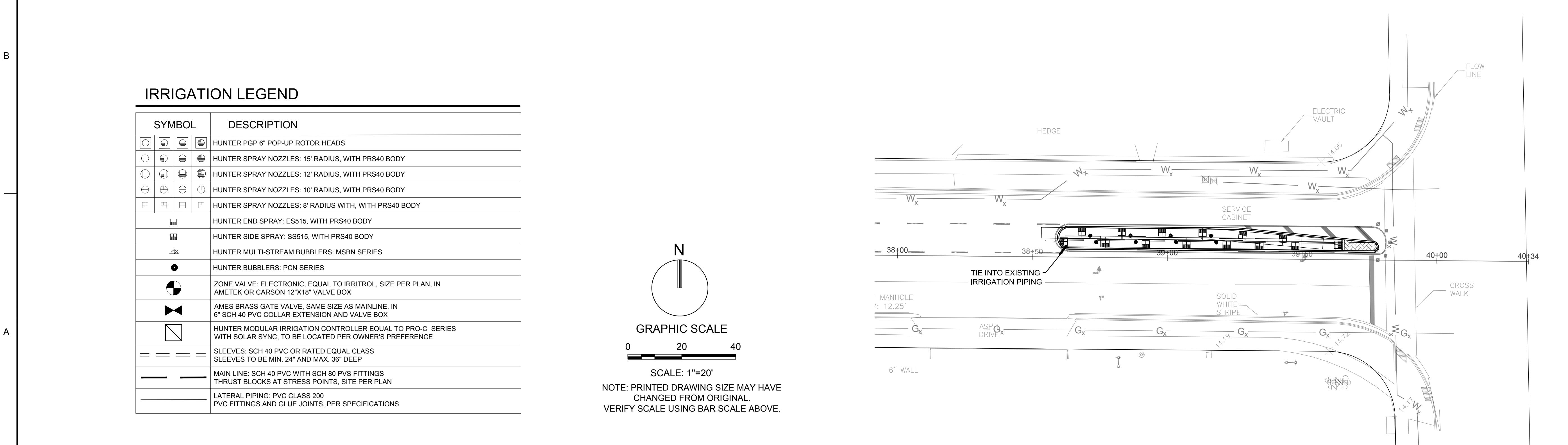
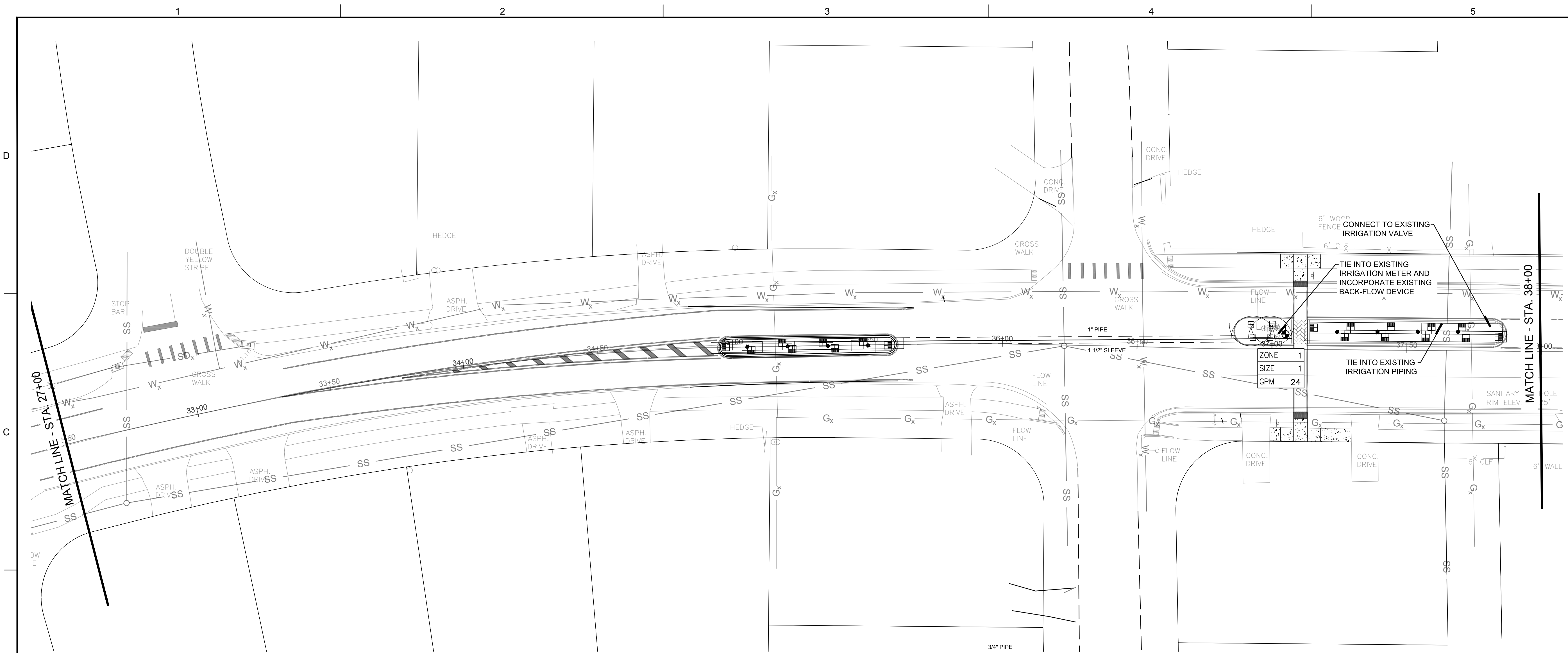
IRRIGATION  
PLAN

SHEET NUMBER

IR-102

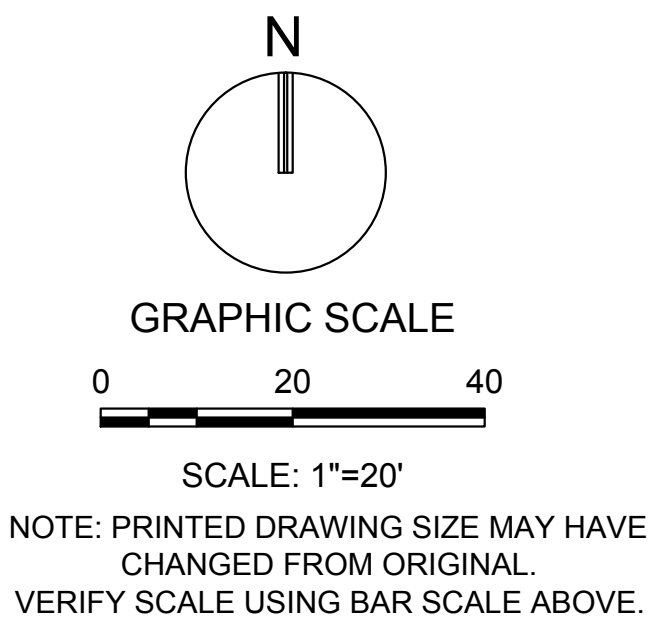
SHEET of 15

PROJECT NO. 09359.01



IRRIGATION LEGEND

SYMBOL	DESCRIPTION
	HUNTER PGP 6" POP-UP ROTOR HEADS
	HUNTER SPRAY NOZZLES: 15' RADIUS, WITH PRS40 BODY
	HUNTER SPRAY NOZZLES: 12' RADIUS, WITH PRS40 BODY
	HUNTER SPRAY NOZZLES: 10' RADIUS, WITH PRS40 BODY
	HUNTER SPRAY NOZZLES: 8' RADIUS WITH, WITH PRS40 BODY
	HUNTER END SPRAY: ES515, WITH PRS40 BODY
	HUNTER SIDE SPRAY: SS515, WITH PRS40 BODY
	HUNTER MULTI-STREAM BUBBLERS: MSBN SERIES
	HUNTER BUBBLERS: PCN SERIES
	ZONE VALVE: ELECTRONIC, EQUAL TO IRRITROL, SIZE PER PLAN, IN AMETEK OR CARSON 12"x18" VALVE BOX
	AMES BRASS GATE VALVE, SAME SIZE AS MAINLINE, IN 6" SCH 40 PVC COLLAR EXTENSION AND VALVE BOX
	HUNTER MODULAR IRRIGATION CONTROLLER EQUAL TO PRO-C SERIES WITH SOLAR SYNC, TO BE LOCATED PER OWNER'S PREFERENCE
	SLEEVES: SCH 40 PVC OR RATED EQUAL CLASS SLEEVES TO BE MIN. 24" AND MAX. 36" DEEP
	MAIN LINE: SCH 40 PVC WITH SCH 80 PVS FITTINGS THRUST BLOCKS AT STRESS POINTS, SITE PER PLAN
	LATERAL PIPING: PVC CLASS 200 PVC FITTINGS AND GLUE JOINTS, PER SPECIFICATIONS



**KEITH & ASSOCIATES, INC.**  
consulting engineers

301 East Atlantic Boulevard  
Pompano Beach, Florida 33060-6643

2160 NW 82<sup>nd</sup> Avenue  
Doral, Florida 33122

(954) 788-3400 FAX (954) 788-3500

Florida Certificate of  
Authorization # - 7928

BID / CONTRACT NO. :

REVISIONS

NO.	DESCRIPTION	DATE

**PRELIMINARY PLAN  
NOT FOR CONSTRUCTION**  
THESE PLANS ARE NOT FULLY PERMITTED  
AND ARE SUBJECT TO REVISIONS MADE  
DURING THE PERMITTING PROCESS.  
RESPONSIBILITY FOR THE USE OF THESE  
PLANS PRIOR TO OBTAINING PERMITS  
FROM ALL AGENCIES HAVING JURISDICTION  
OVER THE PROJECT WILL FALL SOLELY  
UPON THE USER.

**WINFIELD  
BOULEVARD  
IMPROVEMENTS  
CITY OF  
MARGATE**

SCALE: AS NOTED  
DATE ISSUED: FEBRUARY 10, 2017  
DRAWN BY: SR  
DESIGNED BY: MP  
CHECKED BY: MP

MICHAEL J. PHILLIPS, RLA  
FLORIDA REG. NO. LA0001540  
(FOR THE FIRM)

SHEET TITLE

**IRRIGATION  
PLAN**

SHEET NUMBER

**IR-103**

SHEET of

PROJECT NO. 09359.01

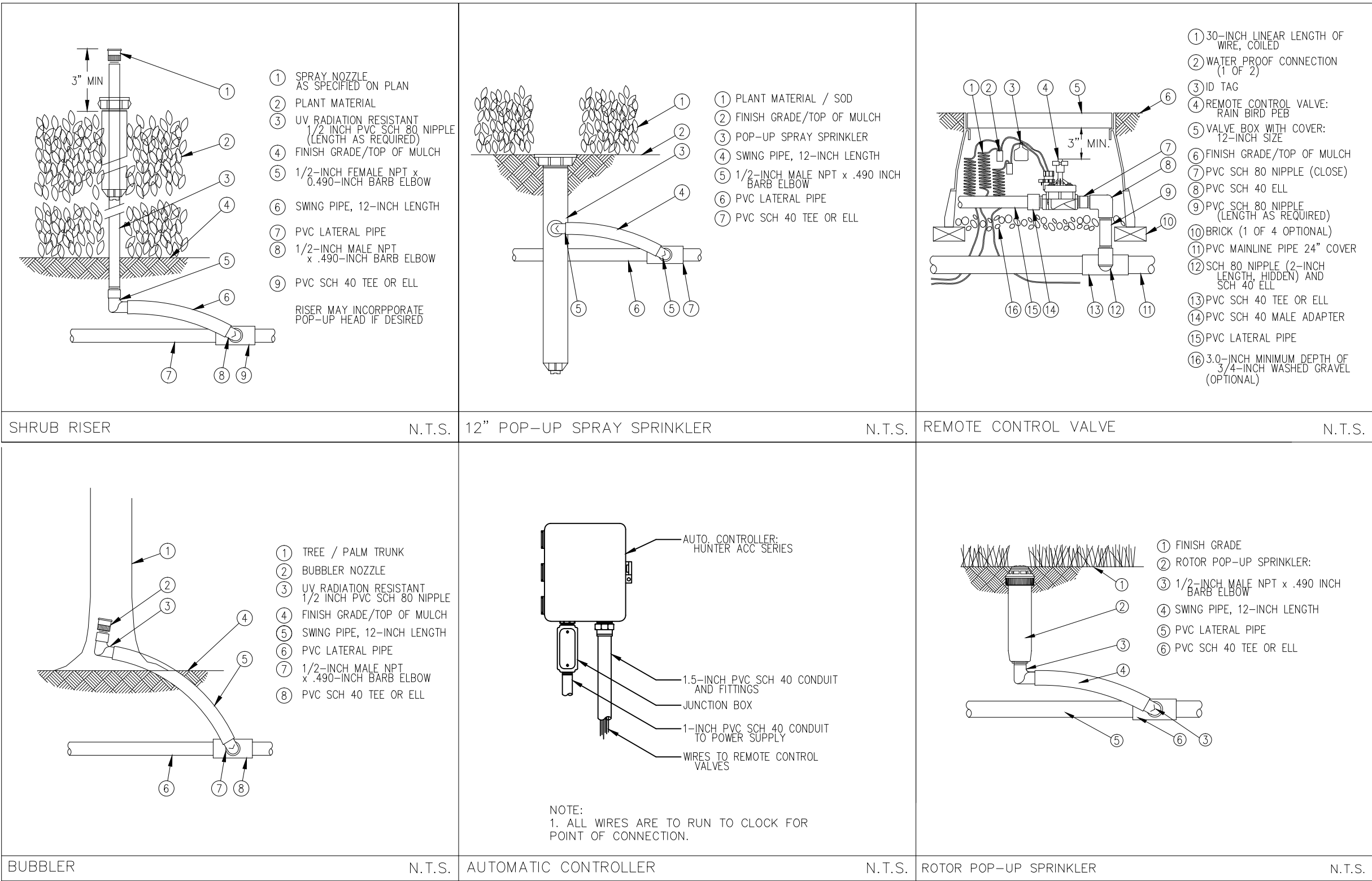


D

C

B

A



## IRRIGATION LEGEND

SYMBOL	DESCRIPTION
	HUNTER PGP 6" POP-UP ROTOR HEADS
	HUNTER SPRAY NOZZLES: 15' RADIUS, WITH PRS40 BODY
	HUNTER SPRAY NOZZLES: 12' RADIUS, WITH PRS40 BODY
	HUNTER SPRAY NOZZLES: 10' RADIUS, WITH PRS40 BODY
	HUNTER SPRAY NOZZLES: 8' RADIUS WITH, WITH PRS40 BODY
	HUNTER END SPRAY: ES515, WITH PRS40 BODY
	HUNTER SIDE SPRAY: SS515, WITH PRS40 BODY
	HUNTER MULTI-STREAM BUBBLERS: MSBN SERIES
	HUNTER BUBBLERS: PCN SERIES
	ZONE VALVE: ELECTRONIC, EQUAL TO IRRITROL, SIZE PER PLAN, IN AMETEK OR CARSON 12"x18" VALVE BOX
	AMES BRASS GATE VALVE, SAME SIZE AS MAINLINE, IN 6" SCH 40 PVC COLLAR EXTENSION AND VALVE BOX
	HUNTER MODULAR IRRIGATION CONTROLLER EQUAL TO PRO-C SERIES WITH SOLAR SYNC, TO BE LOCATED PER OWNER'S PREFERENCE
	SLEEVES: SCH 40 PVC OR RATED EQUAL CLASS SLEEVES TO BE MIN. 24" AND MAX. 36" DEEP
	MAIN LINE: SCH 40 PVC WITH SCH 80 PVS FITTINGS THRUST BLOCKS AT STRESS POINTS, SITE PER PLAN
	LATERAL PIPING: PVC CLASS 200 PVC FITTINGS AND GLUE JOINTS, PER SPECIFICATIONS

## IRRIGATION NOTES

- THE CONTRACTOR IS RESPONSIBLE FOR ALL MATERIAL REQUIRED TO MAKE THE SYSTEM FUNCTION PROPERLY. ALL IRRIGATION SHALL BE INSTALLED IN ACCORDANCE WITH MANUFACTURER'S SPECIFICATIONS AND ALSO STATE AND/OR LOCAL CODES.
- IRRIGATION PLANS ARE SCHEMATIC AND DRAWN FOR GRAPHIC CLARITY. ALL PIPING BELOW PAVEMENT SHALL BE SLEEVED. LAYOUT OF IRRIGATION SYSTEM SHALL BE COORDINATED WITH CORRESPONDING LANDSCAPE PLAN.
- THE CONTRACTOR SHALL BE RESPONSIBLE FOR CONTACTING LOCAL UNDERGROUND UTILITY PROVIDERS TO VERIFY LOCATIONS. THE CONTRACTOR IS ENCOURAGED TO VISIT THE SITE PRIOR TO INSTALLATION AND BECOME FAMILIAR WITH EXISTING CONDITIONS.
- VALVE LOCATIONS ARE SCHEMATIC ONLY AND WILL BE ADJUSTED FOR SITE CONDITIONS. EACH VALVE SHALL BE INSTALLED IN A AMETEK OR CARSON VALVE BOX. THE FLOW ADJUSTMENT FEATURE WILL BE USED TO BALANCE PRESSURE THROUGHOUT THE SYSTEM.
- PIPING SHALL BE SIZED TO MINIMIZE FRICTION LOSS AND MAINTAIN FLOW VELOCITY BELOW 5 FPS.
- THE IRRIGATION CONTROLLER SHALL BE INSTALLED IN ACCORDANCE WITH LOCAL CODES AND MANUFACTURER'S RECOMMENDATIONS. PROPER GROUNDING EQUIPMENT AND SURGE PROTECTION SHALL BE PROVIDED. A RAIN SENSOR SHALL BE INSTALLED TO OVER-RIDE THE CONTROLLER.
- ALL HEADS ON RISERS SHALL BE SET AT THE HEIGHT OF ADJACENT PLANT MATERIAL.
- SPRINKLER LOCATIONS ADJACENT TO PAVEMENT, STRUCTURES, FENCES, ETC. SHALL BE OFFSET AS FOLLOWS: 12" MIN FOR POP-UP MIST HEADS, 18" FOR SHRUB RISERS, 18" FOR ROTOR HEADS, AND TYPICALLY 5 FEET FOR ROTORS ALONG UNCURBED ROADWAYS.
- ALL SLEEVING SHALL BE SCH 40 PVC TO SIZE INDICATED ON PLAN, OR IF NOT INDICATED, A MIN. OF 2 PIPE SIZES LARGER THAN SUPPLY LINE CONTAINED. ALL SLEEVES SHALL BE INSTALLED A MIN. OF 24" BELOW FINISH GRADE.
- CONTROL WIRES SHALL BE UL APPROVED PE IRRIGATION CONTROL WIRE. USE 14 GAGE CONTROL WIRE AND 12 GAGE GROUND WIRE. WIRE SHALL BE BUNDLED AND ATTACHED TO THE MAIN LINE IN TRENCH OR THROUGH WIRE SLEEVES AT PAVEMENT CROSSINGS 24" BELOW FIN. GRADE. ALL SPLICES SHALL BE MADE WITH WATERPROOF DIRECT-BURIAL SPLICE KITS AND CONTAINED IN VALVE BOXES. TWO EXTRA CONTROL WIRES SHALL BE INSTALLED TO THE FURTHEST VALVES IN EACH DIRECTION FROM THE CONTROLLER.
- PIPING IN NARROW PLANTING AREAS, PARKING ISLANDS AND PLANTERS SHALL BE SET TO ONE SIDE TO ALLOW ROOM FOR ROOT BALLS. PIPE AS INDICATED ON PLAN IS SCHEMATIC AND SHOULD BE ADJUSTED FOR FIELD CONDITIONS.
- ALL GLUE JOINTS SHALL BE CLEANED, SANDED, AND TREATED WITH A COLORED HIGH ETCH PRIMER AND JOINED USING A SOLVENT CONFORMING WITH ASTM D2564.
- SYSTEM PIPE SIZE 3/4" SHALL BE CLASS 200 PVC; SYSTEM PIPE SIZE 1" OR GREATER SHALL BE CLASS 160 PVC. SYSTEM MAIN WILL BE SCH. 40 PVC TO SIZE INDICATED ON PLAN. ALL FITTINGS WILL BE SOLVENT WELD SCH. 40 PVC. MAIN LINE SHALL HAVE 24" MINIMUM COVER; ALL OTHER PIPING WILL HAVE 12" MIN. COVER. ALL BACKFILL FOR PIPE TRENCHES SHALL BE CLEAN AND FREE OF FOREIGN DEBRIS AND SHARP OBJECTS; BACKFILLED TRENCHES SHALL BE PROPERLY COMPACTED. ALL MAIN LINES WILL BE INSTALLED A MIN. OF 3' FROM ANY TREE OR PALM.
- WATERING TIME PER STATION WILL BE DETERMINED IN THE FIELD AND PER LOCAL REQUIREMENTS. REFER TO MANUFACTURER'S INSTRUCTIONS FOR PRECIPITATION RATES OF SPRINKLERS SPECIFIED.
- IRRIGATION SYSTEM TO PROVIDE 100% COVERAGE WITH 50% OVERLAP MIN. PROVIDE BUBBLERS FOR ALL NEW AND RELOCATED TREES AND PALMS.
- RUST CONTROL SYSTEM TO BE INSTALLED WITH PUMP STATION (IF FROM WELL).
- THE IRRIGATION SYSTEM IN THE RIGHT-OF-WAY IS TO INCORPORATE LOW TRAJECTORY SPRAY HEADS TO MINIMIZE OVERSPRAY.
- AS-BUILT DRAWINGS SHALL BE PREPARED BY THE CONTRACTOR AND GIVEN TO THE OWNER PRIOR TO FINAL ACCEPTANCE.



301 East Atlantic Boulevard  
Pompano Beach, Florida 33060-6643

2160 NW 82<sup>nd</sup> Avenue  
Doral, Florida 33122

(954) 788-3400 FAX (954) 788-3500

Florida Certificate of  
Authorization # - 7928

BID / CONTRACT NO. :

### REVISIONS

NO.	DESCRIPTION	DATE

### PRELIMINARY PLAN NOT FOR CONSTRUCTION

THESE PLANS ARE NOT FULLY PERMITTED  
AND ARE SUBJECT TO REVISIONS MADE  
DURING THE PERMITTING PROCESS.  
RESPONSIBILITY FOR THE USE OF THESE  
PLANS PRIOR TO OBTAINING PERMITS  
FROM ALL AGENCIES HAVING JURISDICTION  
OVER THE PROJECT WILL FALL SOLELY  
UPON THE USER.

## WINFIELD BOULEVARD IMPROVEMENTS CITY OF MARGATE

SCALE: AS NOTED

DATE ISSUED: FEBRUARY 10, 2017

DRAWN BY: SR

DESIGNED BY: MP

CHECKED BY: MP

MICHAEL J. PHILLIPS, RLA  
FLORIDA REG. NO. LA0001540  
(FOR THE FIRM)

### SHEET TITLE

## IRRIGATION DETAILS AND NOTES

### SHEET NUMBER

IR-104

SHEET of 16

PROJECT NO. 09359.01