

Legend

- = Signs that will be on property (Existing or Proposed with 2019 USP)
- = Signs that will be removed from building

Main Building Elevation Measurements

North Elevation = 794'
 East Elevation = 507'
 South Elevation = 727'
 West Elevation = 474'

Skilled Nursing Building Elevation Measurements

East Elevation = 273'
 South Elevation = 475'

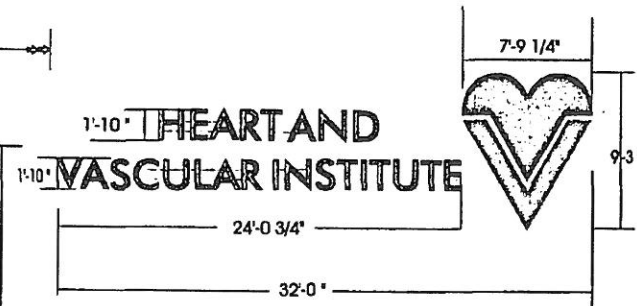
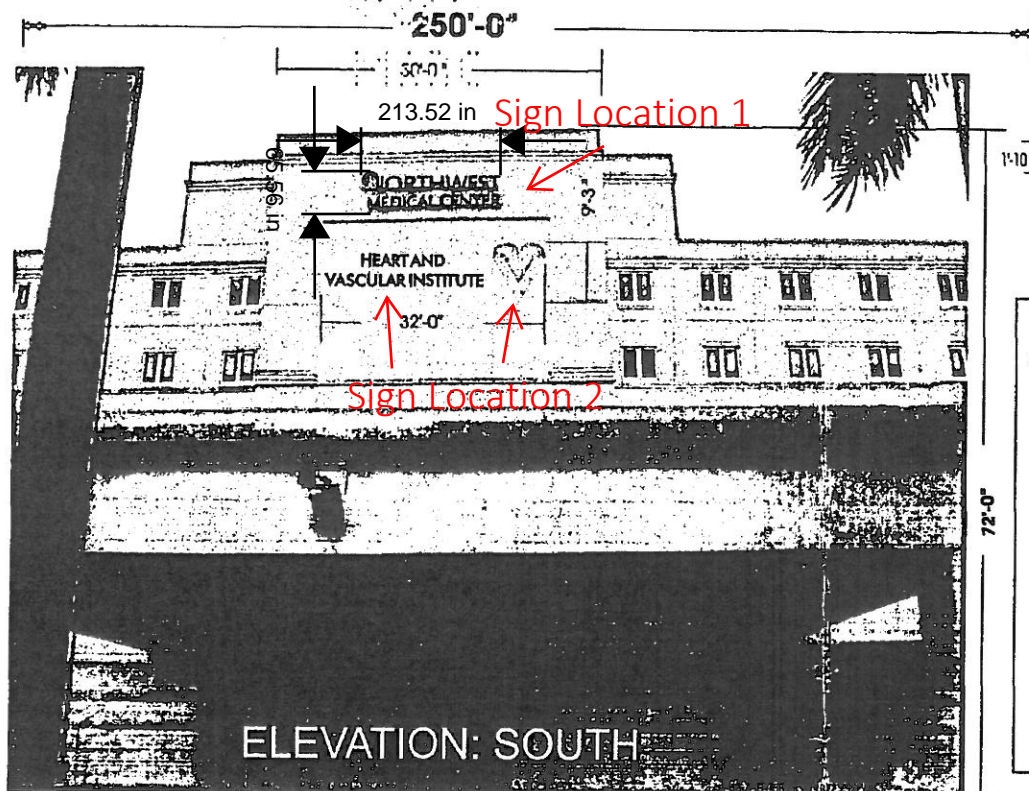
Outpatient Building Elevation

East Elevation = 88'

Type of Sign	Elevation Located On	EXISTING OR PROPOSED? KEEPING IN USP OR BEING REMOVED?	Sign Types*	Letter Styles	Letters Colors	Letters Heights	Location Plan
Northwest Medical Center – Main ID Sign	South Elevation	EXISTING – KEEPING IN USP	Illuminated Channel Letters	Helvetica Bold	BLACK	2’ 2”	1
Heart and Vascular Institute – Secondary Identification	South Elevation	EXISTING – KEEPING IN USP	Illuminated Channel Letters	Helvetica Bold	BLACK	22” HIGH	2
Heart Logo	South Elevation	EXISTING – KEEPING IN USP	Illuminated Channel Letter	N/A	WHITE W/ GRAPHICS	9’ 3”	2
Main Entrance	South Elevation	EXISTING – KEEPING IN USP	Non-Illuminated Letters	Helvetica Condensed Bold	Black	9”	3
Emergency Entrance – Main ID Sign	South Elevation	EXISTING – KEEPING IN USP	Internally Illuminated Channel Letters	Helvetica Condensed Bold	RED	2’ HIGH	4
Northwest Medical Center – Main Identification	East Elevation	PROPOSED – KEEPING IN USP	Illuminated Channel Letters	Optima Medium	BLACK	1’ 5 3/8” HIGH	5
Heart and Vascular Institute – Secondary Identification	East Elevation	PROPOSED – KEEPING IN USP	Illuminated Channel Letters	Optima Medium	BLACK	1’ 51/2” HIGH	6
Heart Logo	East Elevation	PROPOSED – KEEPING IN USP	Illuminated Channel Letters	N/A	RED & BLUE	10’ 7” HIGH	6
Ambulance	East Elevation	EXISTING – KEEPING IN USP	Illuminated Channel Letters	Helvetica Bold	WHITE	2’ HIGH	7
Heart Logo	North Elevation	PROPOSED – KEEPING IN USP	Illuminated Channel Letter	N/A	RED & BLUE	10’ 7” HIGH	8
Northwest	East Elevation	EXISTING – KEEPING IN USP	Illuminated Channel Letters	Helvetica Bold	BLACK	26.5” HIGH	9
Outpatient Pavilion	East Elevation	EXISTING – KEEPING IN USP	Illuminated Channel Letters	Helvetica Bold	BLACK	22” HIGH	10
Enter – Parking Garage Information Sign	South Elevation	EXISTING – KEEPING IN USP	Non-Illuminated Channel Letters	Helvetica Condensed Bold	BLACK	9” HIGH	11
Exit – Parking Garage Information Sign	East Elevation	EXISTING – KEEPING IN USP	Non-Illuminated Channel Letters	Helvetica Condensed Bold	BLACK	9” HIGH	12
Margate Health Care Center/Skilled Nursing and Rehab – Main ID Sign	East Elevation	EXISTING – KEEPING IN USP	Non-Illuminated Channel Letters	Times New Roman	GREEN	Margate – 12” Skilled Nursing – 10”	13
Margate Health Care Center/Skilled Nursing and Rehab – Main ID Sign	South Elevation	EXISTING – KEEPING IN USP	Non-Illuminated Channel Letters	Times New Roman	GREEN	Margate – 12” Skilled Nursing – 10”	14

Heart and Vascular Institute – Main Identification Sign	East Elevation	EXSISITNG – BEING REMOVED FROM BUILDING	Illuminated Channel Letter	Helvetica Bold	Black	2’ HIGH	15
Heart Logo	East Elevation	EXSISITNG – BEING REMOVED FROM BUILDING	Illuminated Channel Letters	N/A	RED & BLUE	9’ 6” HIGH	16
Heart and Vascular Institute – Main Identification	North Elevation	EXSISITNG – BEING REMOVED FROM BUILDING	Illuminated Channel Letters	Helvetica Bold	BLACK	1’ 3” HIGH	17
Heart Logo	North Elevation	EXSISITNG – BEING REMOVED FROM BUILDING	Illuminated Channel Letters	N/A	RED & BLUE	5’ HIGH	18
Northwest Medical Center – Tower ID	East Elevation	ESITING – STAYING ON BUILDING	Illuminated Channel Letters	Helvetica Bold	BLACK	32’ 2” HIGH	19

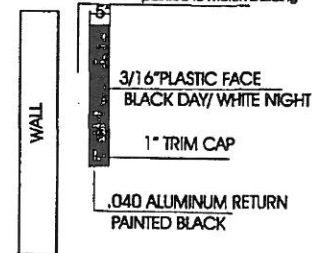
Approved at
4/11 meeting



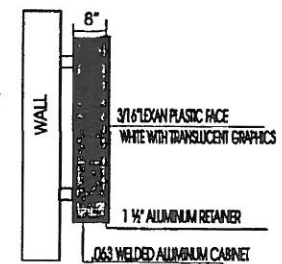
Specifications

LETTERS DETAILS

8"x8" Extruded Raceway
painted to match building



LOGO DETAILS



LETTERS HEIGHT 22"
ILLUMINATION: WHITE NEON
PROPOSED S.Q. FT. 296'.0"

SCALE: 1/16" = 1'-0" (LETTERS & BUILDING SUPER IMPOSED)



835 NW 6 AVE.
Fort Lauderdale, FL 33311
Ph. 954-763-4410
888-763-4410
Fax: 954-763-2736
www.artsignfl.com
fred@artsignfl.com

Date: 2-25-2011
DWG#: 225211-4
Drawn By: Fred Shultz
File: N04
Sheet: 4

JOB TITLE: North West Hospital
ADDRESS: 2801 N. STATE RD. 7
MARGATE, FL
SALES REP:

Client Approval

Date

REVISIONS:

Property Owner Approval

Date

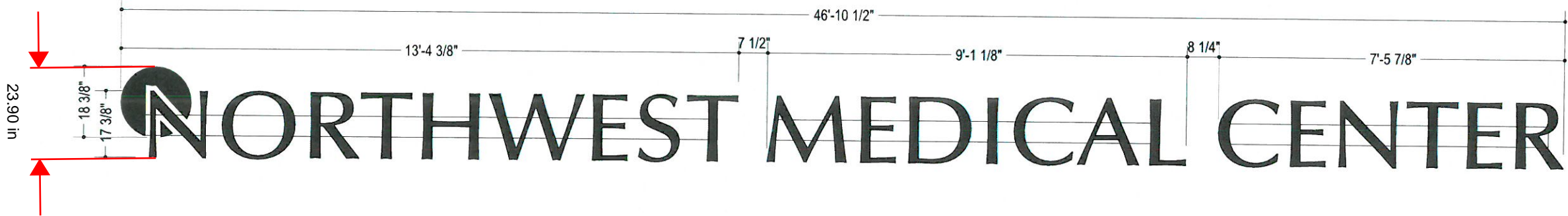
Sign Location 3



Sign Location 4



SIGN LOCATION 5



A Illuminated Channel Letters - EAST ELEVATION

5" Deep fabricated aluminum channel letters, with White LED illumination.
Returns painted Black.
3/16" Acrylic faces with 1" trim cap painted Black.
Perforated Black vinyl to illuminate white.

Letters to be mounted to SignComp 5" Narrow Raceways containing Low voltage 60W power supplies.
Raceways painted to match building facade (TBD*).
All Raceways to be controlled by a single photocell.

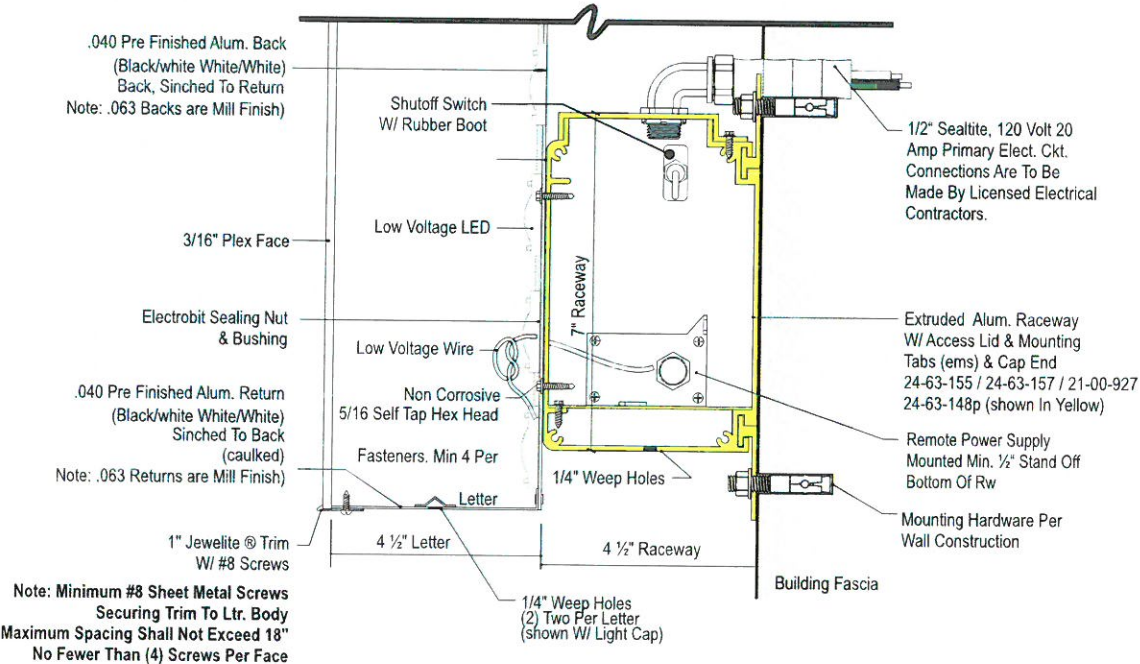
GC to provide 120V/20A circuit with stub out.
GC to provide 1/2" thick plywood blocking aached directly to studs.

Scale: 1/4"=1'-0"

- Production Notes**
- 1) Fabricated Aluminum Channel Letters
 - 2) SignComp Aluminum Raceway, Painted
- Paint Notes:**
- ALL PAINT TO HAVE SATIN FINISH
P1) Matthews Paint MP 923SP Black
P2) To Match Building - COLOR TBD
- Vinyl Notes:**
- V1) 3M 3635-222 Black Day Dual Color

ANCHOR SCHEDULE		QTY or SPACING
WALL MATERIAL	ANCHOR TYPE	
CONCRETE (3ksi) or HOLLOW MASONRY	1/4" THREADED RODS WITH MIN 2" EMBED IN ADHESIVE	PAIRS @ 41" O.C.
	1/4" TAPCONS (OR EQUIV) WITH 1 3/4" EMBED	PAIRS @ 48" O.C.
	1/4" EXPANSION ANCHORS WITH 2 1/2" EMBED	PAIRS @ 48" O.C.
1/2" PLYWOOD (NO ACCESS BEHIND)	1/4" TOGGLE BOLTS	PAIRS @ 47" O.C.
	1/4" WOOD SCREWS OR TAPCONS FULL EMBED	PAIRS @ 31" O.C.
METAL STUDS OR METAL PANELS	#14 METAL SCREWS TO MIN 18ga STEEL OR .090" ALUM.	PAIRS @ 42" O.C.
HOLLOW WALL (BLOCKING BEHIND)	1/4" THURBOLTS OR LAGS TO SOLID BLOCKING BEHIND	PAIRS @ 48" O.C.

FACES	TRIM CAP	RETURNS	RACEWAY
			
3M 3635-222 BLACK - DAY DUAL COLOR	MP 923SP BLACK	MP 923SP BLACK	COLOR TBD



A Section Detail



12801 Commodity Place
Tampa, Florida 33626
Phone: 800-804-4809
Fax: 813-749-2311
www.creativesigndesigns.com

PROJECT:

Northwest
Medical Center

SITE ADDRESS

2801 N State Rd 7
Margate, FL 33063

CRM / Quote:

15337 - 74793

Account Manager:
Linda Prusiecki

Project Manager / Project Leader
Mark Funderburk

Designer: CPC
Date: 1/7/19

Revisions

No. Date Description

01 00/00/00 —

03

Approval:

☐ Approved

☐ Approved as noted

☐ Revise and resubmit

Approved:

Date:

This Drawing and all reproductions thereof are the property of Creative Sign Designs and may not be reproduced, published, changed or used in any way without written consent.

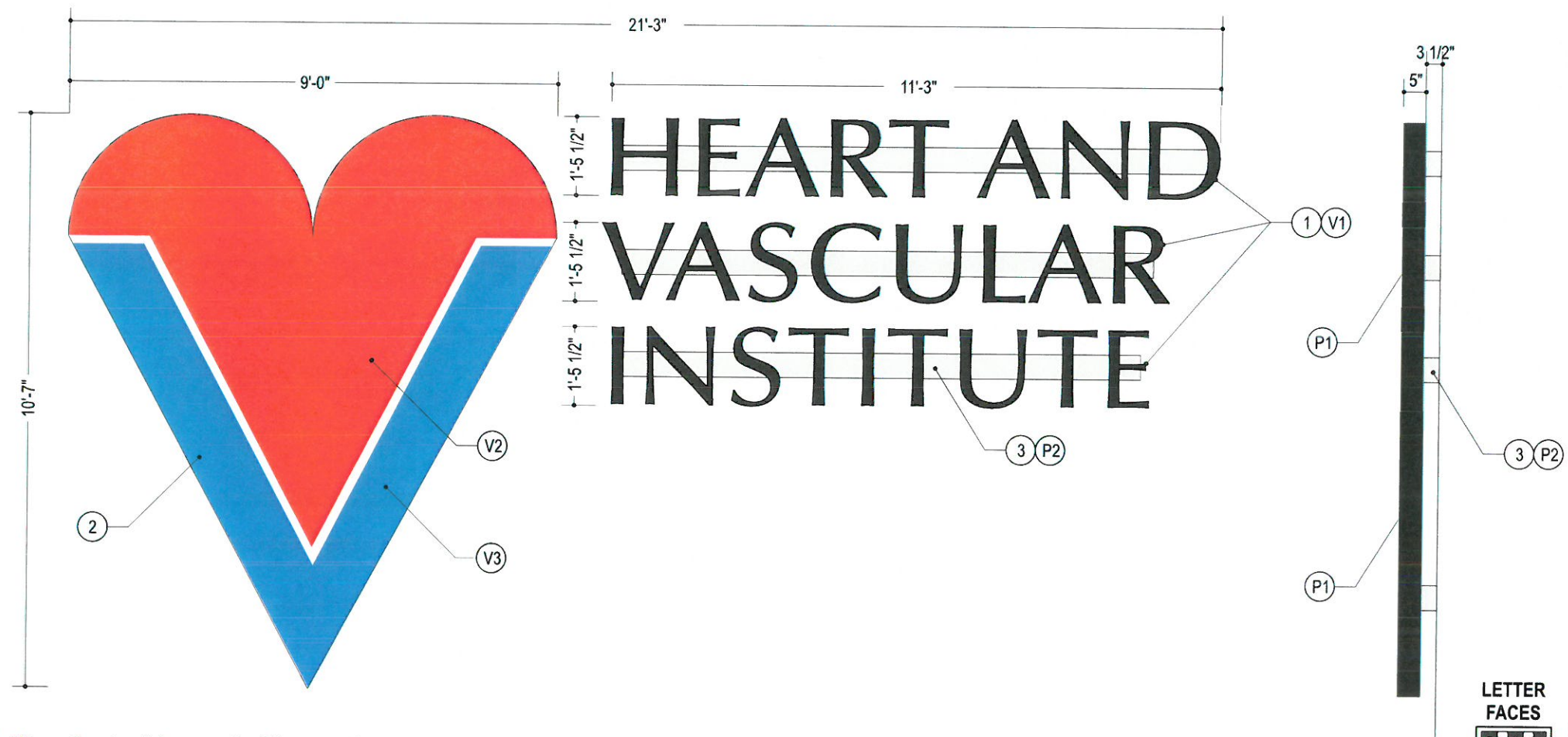
Sheet:

3 3 OF 5

File Name:

XXX

SIGN LOCATION 6



Production Notes

- 1) Fabricated Aluminum Channel Letters
- 2) Fabricated Aluminum Logo
 - Flexible Face w/ Translucent Vinyl
 - Applied 1st Surface
- 3) SignComp Aluminum Raceway, Painted

Paint Notes:

ALL PAINT TO HAVE SATIN FINISH
P1) Matthews Paint MP 923SP Black
P2) To Match Building - COLOR TBD

Vinyl Notes:

V1) 3M 3635-222 Black Day Dual Color
V2) COLOR TBD
V3) COLOR TBD

ANCHOR SCHEDULE

WALL MATERIAL	ANCHOR TYPE	QTY or SPACING
CONCRETE (3ksi) or HOLLOW MASONRY	1/4" THREADED RODS WITH MIN 2" EMBED IN ADHESIVE	PAIRS @ 41" O.C.
	1/4" TAPCONS (OR EQUIV) WITH 1 3/4" EMBED	PAIRS @ 48" O.C.
	1/4" EXPANSION ANCHORS WITH 2 1/2" EMBED	PAIRS @ 48" O.C.
1/2" PLYWOOD (NO ACCESS BEHIND)	1/4" TOGGLE BOLTS	PAIRS @ 47" O.C.
	1/4" WOOD SCREWS OR TAPCONS FULL EMBED	PAIRS @ 31" O.C.
METAL STUDS OR METAL PANELS	#14 METAL SCREWS TO MIN 18ga STEEL OR .090" ALUM.	PAIRS @ 42" O.C.
HOLLOW WALL (BLOCKING BEHIND)	1/4" THURBOLTS OR LAGS TO SOLID BLOCKING BEHIND	PAIRS @ 48" O.C.

LETTER FACES
3M 3635-222 BLACK - DAY DUAL COLOR

LOGO FACE
COLOR TBD

LOGO FACE
COLOR TBD

TRIM CAP
MP 923SP BLACK

RETURNS
MP 923SP BLACK

RACEWAY
COLOR TBD

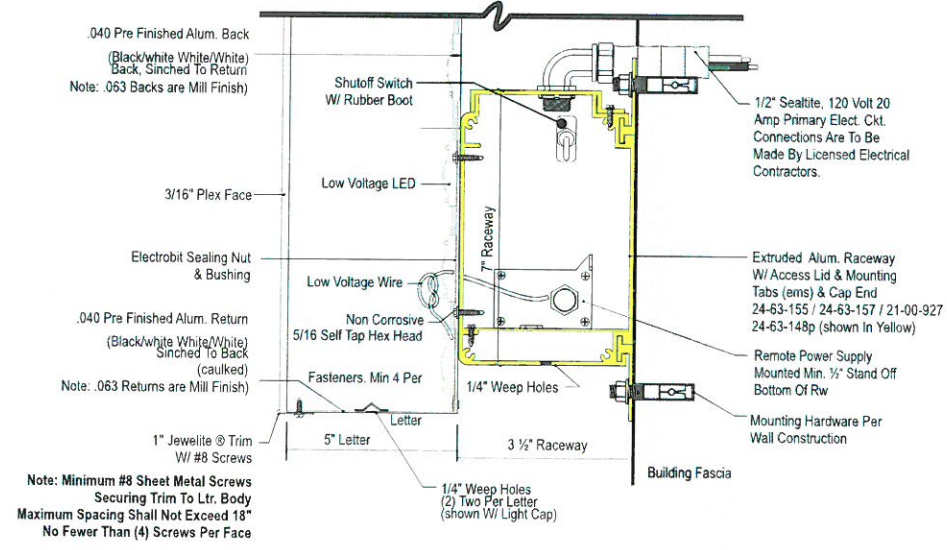
B Illuminated Logo & Channel Letters - EAST ELEVATION

5" Deep fabricated aluminum channel letters, with White LED illumination. Returns painted Black.
3/16" Acrylic faces with 1" trim cap painted Black. Perforated Black vinyl to illuminate white.
Letters to be mounted to SignComp 5" Narrow Raceways containing Low voltage 60W power supplies.
Raceways painted to match building facade (TBD*).
All Raceways to be controlled by a single photocell.

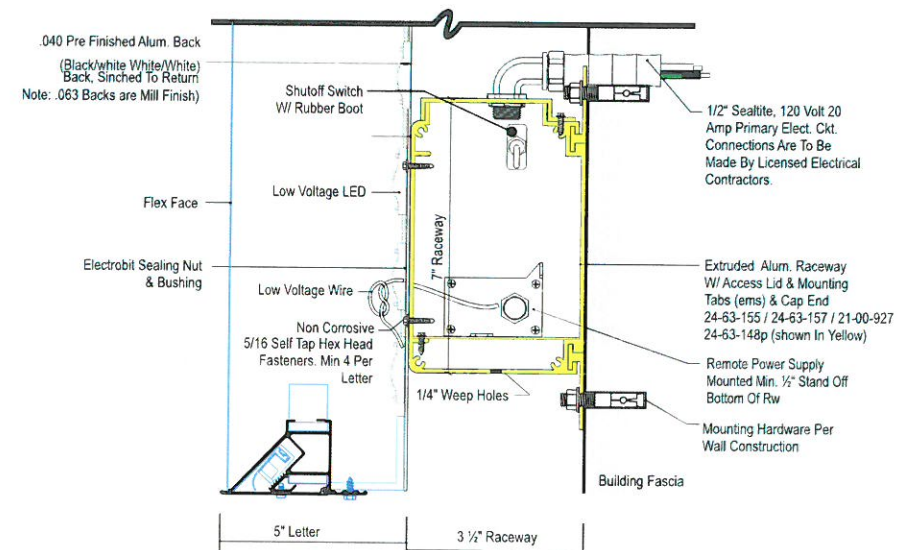
Scale: 3/8"=1'-0"

5" Deep Fabricated Aluminum Heart, with White LED illumination. Returns painted Black. Flex Faces with translucent vinyl to match TBD.

GC to provide 120V/20A circuit with stub out.
GC to provide 1/2" thick plywood blocking attached directly to studs.



LETTERING - Section Detail



LOGO - Section Detail



12801 Commodity Place
Tampa, Florida 33626
Phone: 800-804-4809
Fax: 813-749-2311

www.creativesigndesigns.com

PROJECT:

Northwest Medical Center

SITE ADDRESS

2801 N State Rd 7
Margate, FL 33063

CRM / Quote:

15337 - 74793

Account Manager:
Linda Prusiecki

Project Manager / Project Leader
Mark Funderburk

Designer: CPC
Date: 1/7/19

Revisions

No.	Date	Description
01	00/00/00	—
03		

Approval:

- ☐ Approved
- ☐ Approved as noted
- ☐ Revise and resubmit

Approved: _____
Date: _____

This Drawing and all reproductions thereof are the property of Creative Sign Designs and may not be reproduced, published, changed or used in any way without written consent.

Sheet:

4 4 OF 5

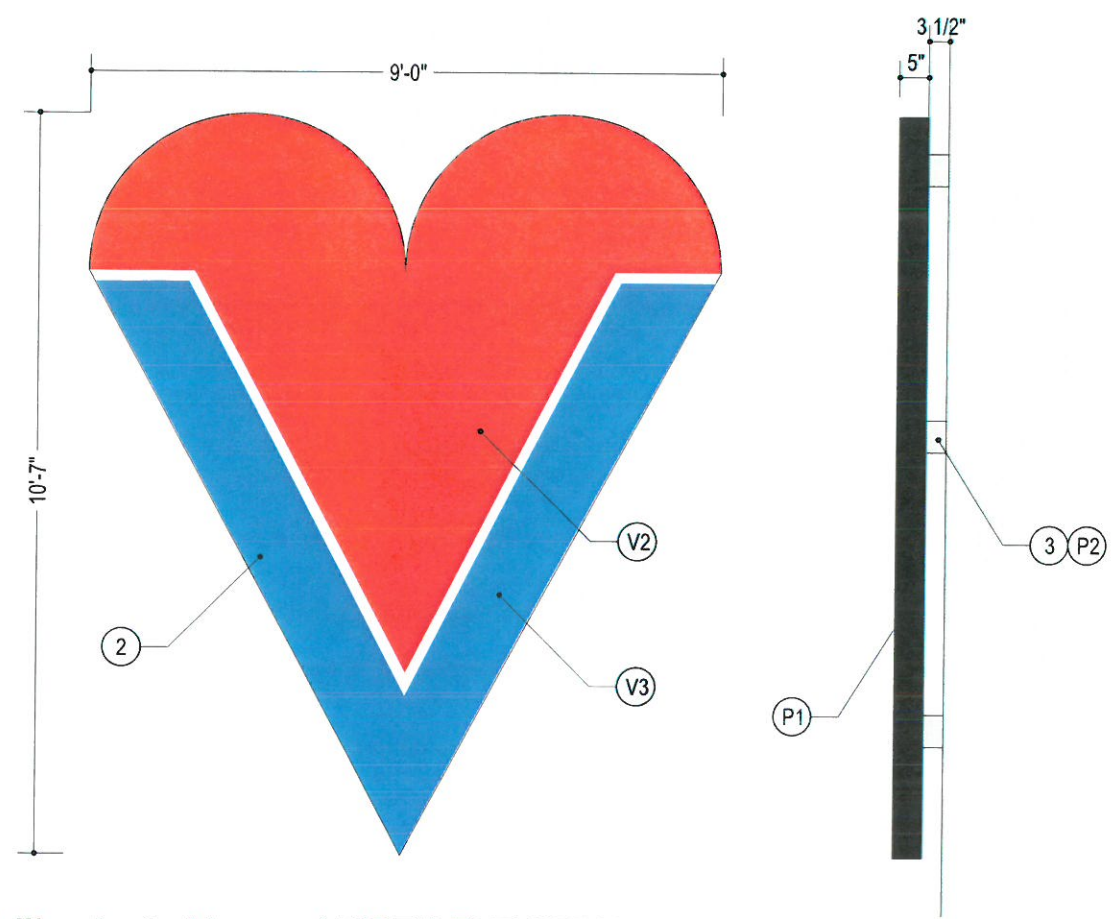
File Name:

XXX

Sign Location 7



SIGN LOCATION 8



C Illuminated Logo - NORTH ELEVATION

5" Deep Fabricated Aluminum Heart, with White LED illumination.
Returns painted Black. Flex Faces with translucent vinyl to match TBD.

GC to provide 120V/20A circuit with stub out.
GC to provide 1/2" thick plywood blocking attached directly to studs.

Scale: 3/8"=1'-0"

Production Notes

- 1) Fabricated Aluminum Channel Letters
- 2) Fabricated Aluminum Logo
 - Flexible Face w/ Translucent Vinyl
 - Applied 1st Surface
- 3) SignComp Aluminum Raceway, Painted

Paint Notes:

- ALL PAINT TO HAVE SATIN FINISH
- P1) Matthews Paint MP 923SP Black
 - P2) To Match Building - COLOR TBD

Vinyl Notes:

- V1) 3M 3635-222 Black Day Dual Color
- V2) COLOR TBD
- V3) COLOR TBD

ANCHOR SCHEDULE

WALL MATERIAL	ANCHOR TYPE	QTY or SPACING
CONCRETE (3ksi) or HOLLOW MASONRY	1/4" THREADED RODS WITH MIN 2" EMBED IN ADHESIVE	PAIRS @ 41" O.C.
	1/4" TAPCONS (OR EQUIV) WITH 1 3/4" EMBED	PAIRS @ 48" O.C.
	1/4" EXPANSION ANCHORS WITH 2 1/2" EMBED	PAIRS @ 48" O.C.
1/2" PLYWOOD (NO ACCESS BEHIND)	1/4" TOGGLE BOLTS	PAIRS @ 47" O.C.
	1/4" WOOD SCREWS OR TAPCONS FULL EMBED	PAIRS @ 31" O.C.
METAL STUDS OR METAL PANELS	#14 METAL SCREWS TO MIN 18ga STEEL OR .090" ALUM.	PAIRS @ 42" O.C.
HOLLOW WALL (BLOCKING BEHIND)	1/4" THRU BOLTS OR LAGS TO SOLID BLOCKING BEHIND	PAIRS @ 48" O.C.

LETTER FACES

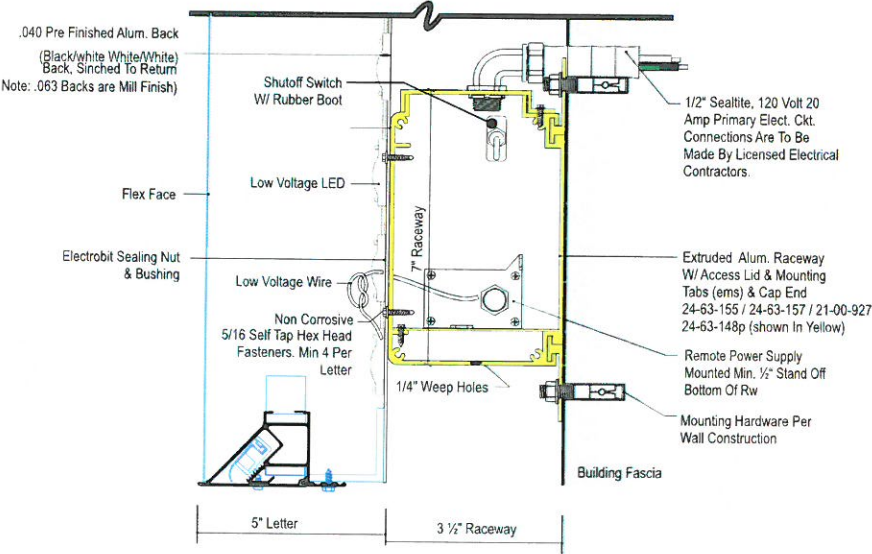
LOGO FACE

LOGO FACE

TRIM CAP

RETURNS

RACEWAY



LOGO - Section Detail



12801 Commodity Place
Tampa, Florida 33626
Phone: 800-804-4809
Fax: 813-749-2311

www.creativesigndesigns.com

PROJECT:

Northwest
Medical Center

SITE ADDRESS

2801 N State Rd 7
Margate, FL 33063

CRM / Quote:

15337 - 74793

Account Manager:
Linda Prusiecki

Project Manager / Project Leader
Mark Funderburk

Designer: Date:
CPC 1/7/19

Revisions

No. Date Description

01 00/00/00 —

03

Approval:

- ☐ Approved
- ☐ Approved as noted
- ☐ Revise and resubmit

Approved:
Date:

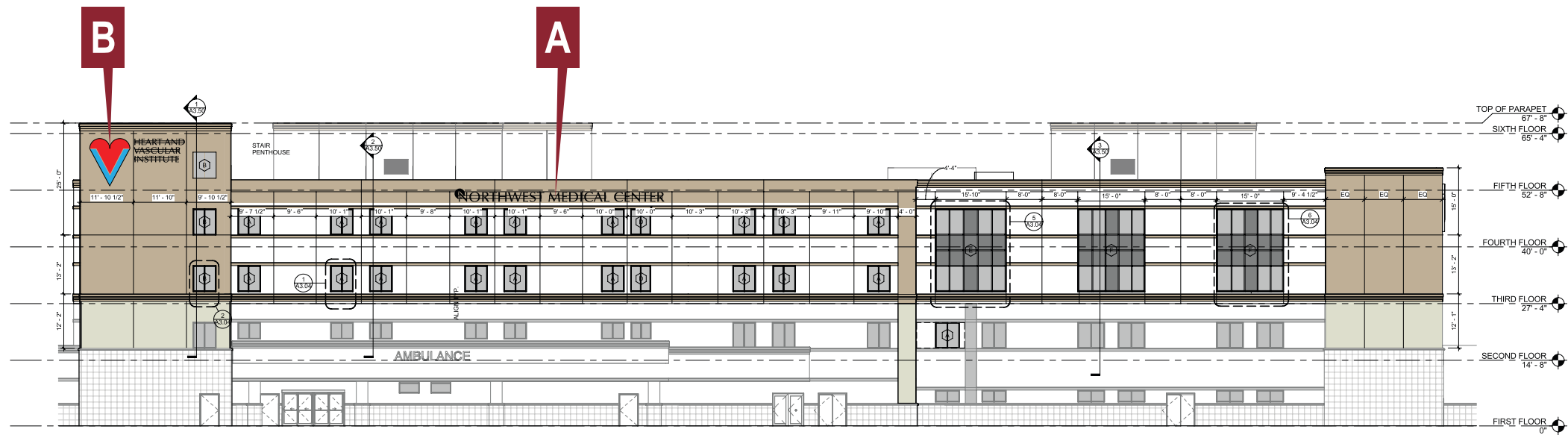
This Drawing and all reproductions thereof are the property of Creative Sign Designs and may not be reproduced, published, changed or used in any way without written consent.

Sheet:

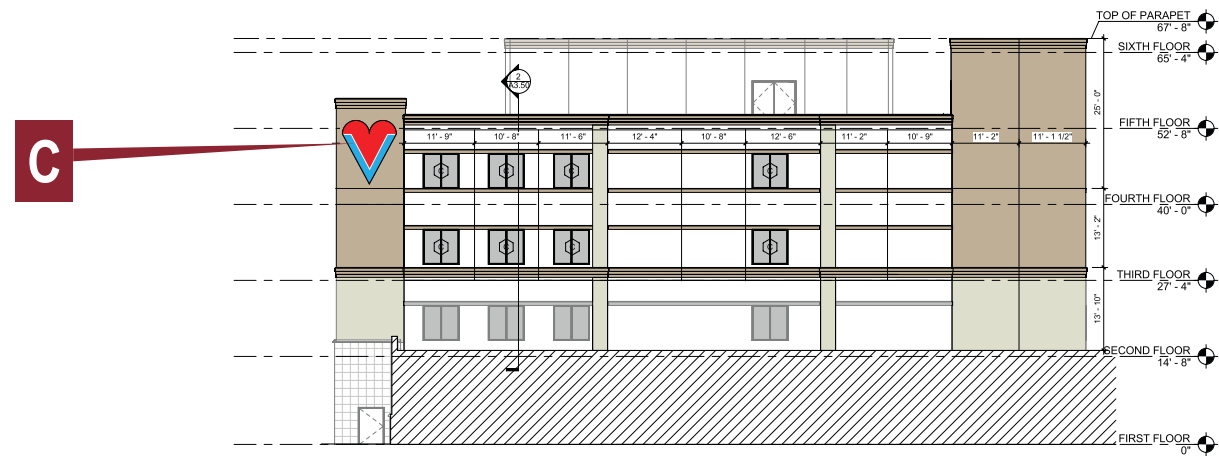
5 5 OF 5

File Name:

XXX



Illuminated Logo & Channel Letters - EAST ELEVATION



Illuminated Logo - NORTH ELEVATION



12801 Commodity Place
Tampa, Florida 33626

Phone: 800-804-4809
Fax: 813-749-2311

www.creativesigndesigns.com

PROJECT:

Northwest
Medical Center

SITE ADDRESS

2801 N State Rd 7
Margate, FL 33063

CRM / Quote:

15337 - 74793

Account Manager:

Linda Prusiecki

Project Manager / Project Leader
Mark Funderburk

Designer:

CPC

Date:

1/7/19

Revisions

No.	Date	Description
01	00/00/00	—
03		

Approval:

☐ Approved

☐ Approved as noted

☐ Revise and resubmit

Approved:

Date:

This Drawing and all reproductions thereof are the property of **Creative Sign Designs** and may not be reproduced, published, changed or used in any way without written consent.

Sheet:

2

2

OF 5

File Name:

15337 - 74793 Northwest Medical EXT 01.07.19

J:\KEYED IN PROJECTS\N\Northwest Medical Center - DPR - 15337\74793 - Northwest Medical Center - Exterior\02. Design\Drawings



Sign Location 9

Sign Location 10

Sign Location 11



PHOTOS FOR REFERENCE ONLY - N.T.S.

Sign Location 12



PARKING GARAGE NON-LIT LETTER SETS - QTY:(1 Each)
Scale: 3/8"=1'-0"

- 1) Non-Lit Plastic Formed Letter Sets at Parking Garage
- 2) Standard 9" Cap Height Helvetica Type Style
- 3) Black Finish #2025
- 4) Letters Pin Mounted Flush To Building Above Enter and Exit Lanes (As Shown)

E-mail: orders@vinylot.com ● Web: www.vinylot.com

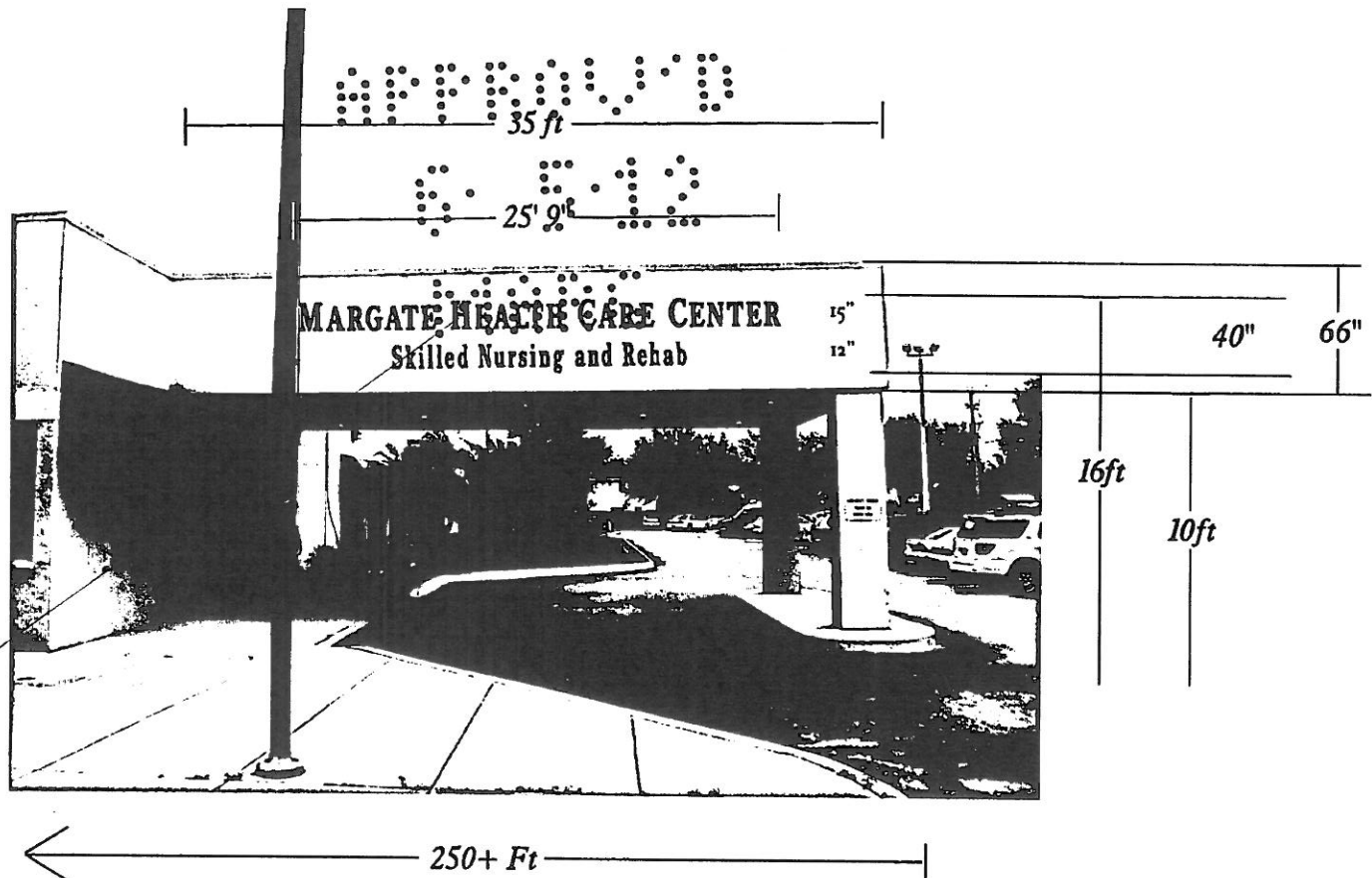
Sign Location 14

Lettering is:
15 & 12"
Gemini Letters

Sign is 85.8 sqft.

Allowable Signage
is 250+ sqft.

#2030 Green
Times New Roman
Letter Style.



Main sign South Elevation

No Electric

Job name Margate Health Care Center
Address 5951 Colonial Dr. Margate, Fl



2050 NW 55th Ave
Across from Maroone Ford on Copans Road
Margate, FL 33063

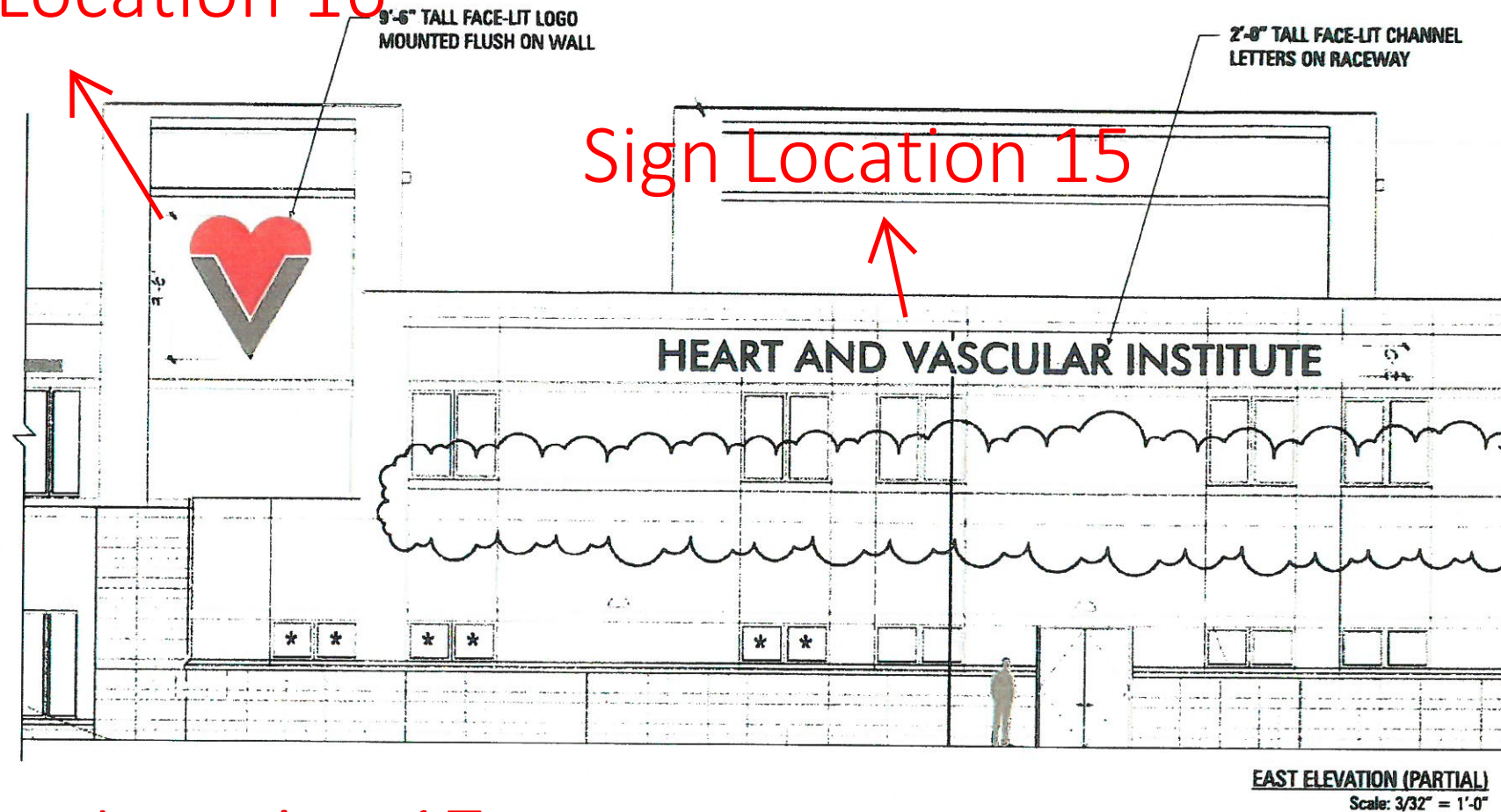
Office: 954.978.8424
Fax: 954.978.6629

E-mail: orders@vinylot.com • Web: www.vinylot.com

Sign Location 16

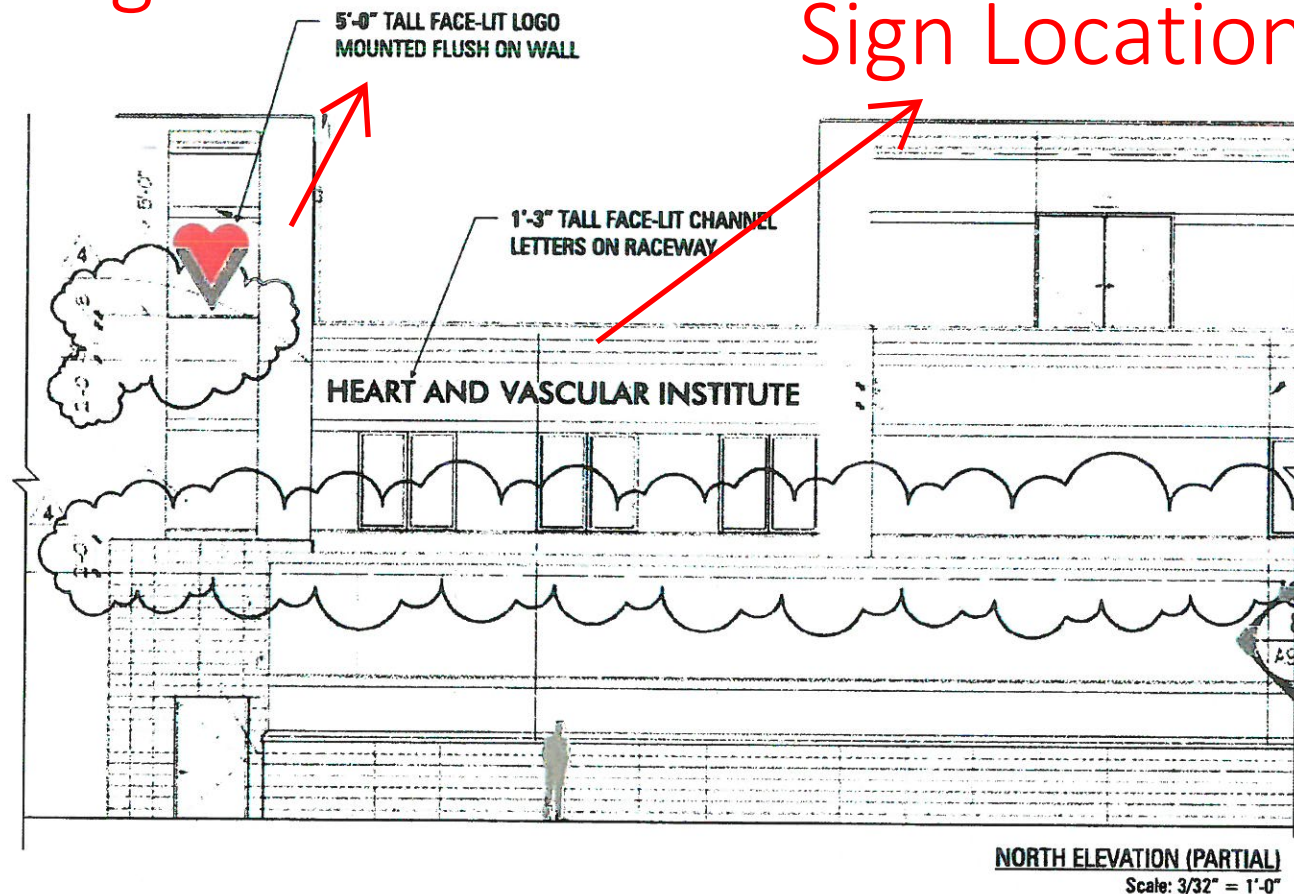
Sign Location 15

NOTE**
ALL signs on this
page will be removed



Sign Location 18

Sign Location 17



JONES SIGN 1711 Scheuring Road De Pere, WI 54115 Tel: 920-983-6700 Fax: 920-983-9145 www.jonesign.com	
PROJECT	
NORTHWEST MEDICAL CENTER 2801 North State Rd. 7 Margate, FL 33063	
CUSTOMER APPROVAL	
Authorized Signature	
X _____	
Date: ____/____/____	
REVISIONS	
1	1.27.12 RE Add Sign/Copy
2	
3	
4	
5	
6	
7	
REPRESENTATIVE	
Rod Fredrickson	
DRAWN BY	
RJE	
DATE	
1.24.12	
SCALE	
3/32" = 1'-0"	
SHEET	
10 of 10	
DRAWING #	
84862	

SIGN LOCATION - 19 - NORTHWEST MEDICAL
CENTER EAST TOWER ELEVATION
(OBSTRUCTED VIEW DUE TO EXPANSION)

